

Appendix C: Maximum conducted output power Test Result Channel Power

Test Mode	Antenna	Frequency [MHz]	Channel Power [dBm]	Duty Cycle [%]	DC Factor [dBm]	Result [dBm]	Limit [dBm]	Verdict
11A	Ant1	5180	16.74	94.06	0.27	17.01	≤23.98	PASS
11A	Ant1	5200	16.99	94.06	0.27	17.26	≤23.98	PASS
11A	Ant1	5240	17.87	94.06	0.27	18.14	≤23.98	PASS
11A	Ant1	5745	17.63	94.06	0.27	17.90	≤30.00	PASS
11A	Ant1	5785	15.92	94.06	0.27	16.19	≤30.00	PASS
11A	Ant1	5825	15.57	94.09	0.26	15.83	≤30.00	PASS

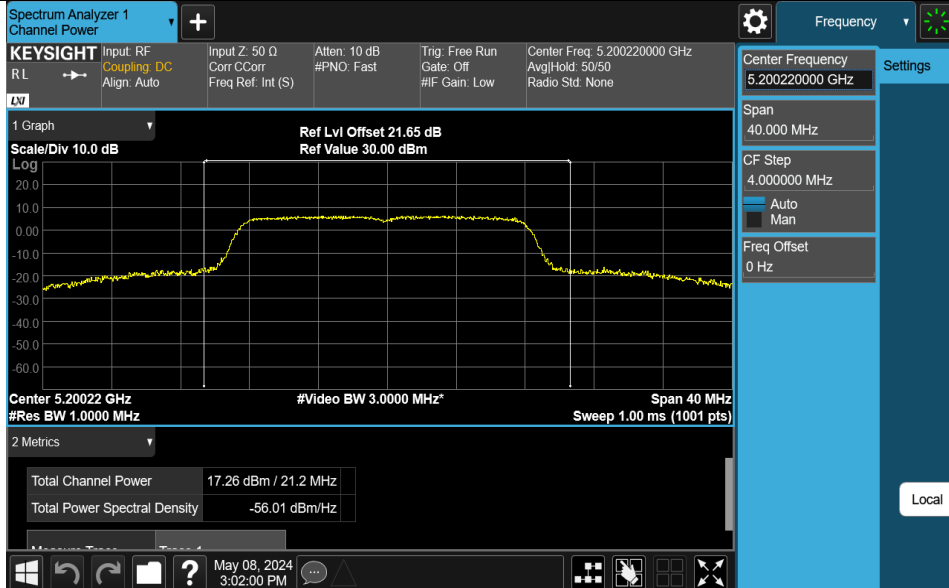
Note: The Duty Cycle Factor is compensated in the graph.

Test Graphs Channel Power

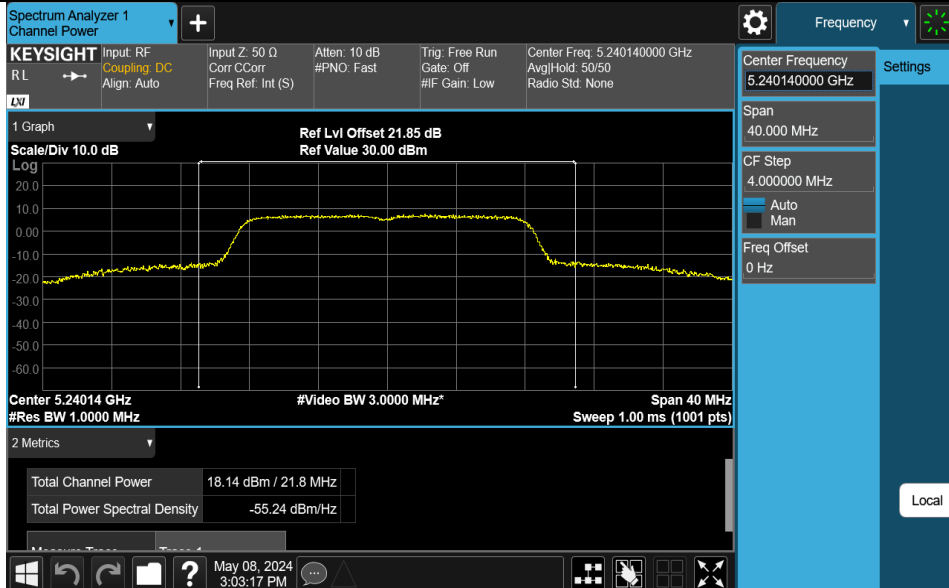
11A-Ant1-5180-PASS



11A-Ant1-5200-PASS



11A-Ant1-5240-PASS



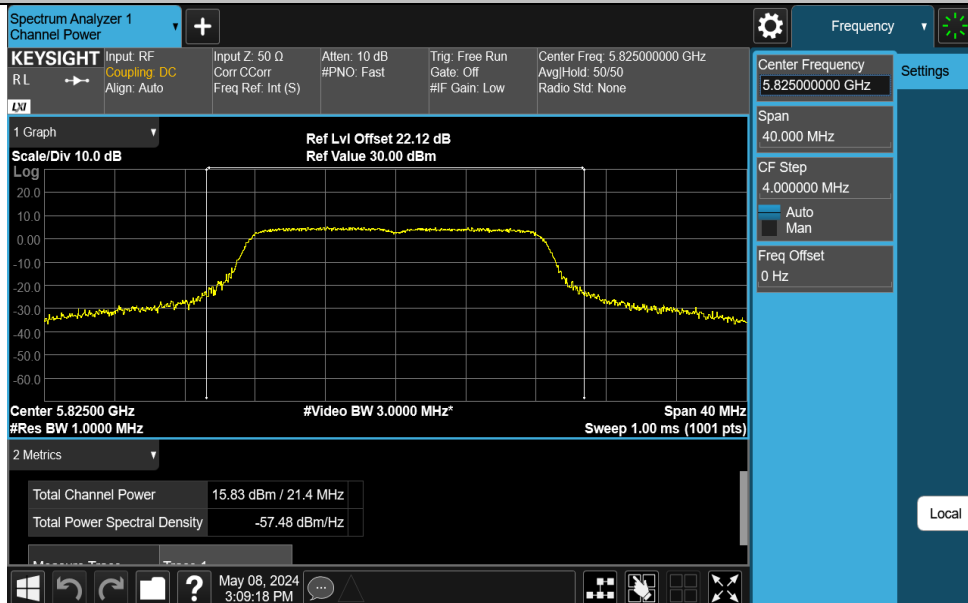
11A-Ant1-5745-PASS



11A-Ant1-5785-PASS



11A-Ant1-5825-PASS



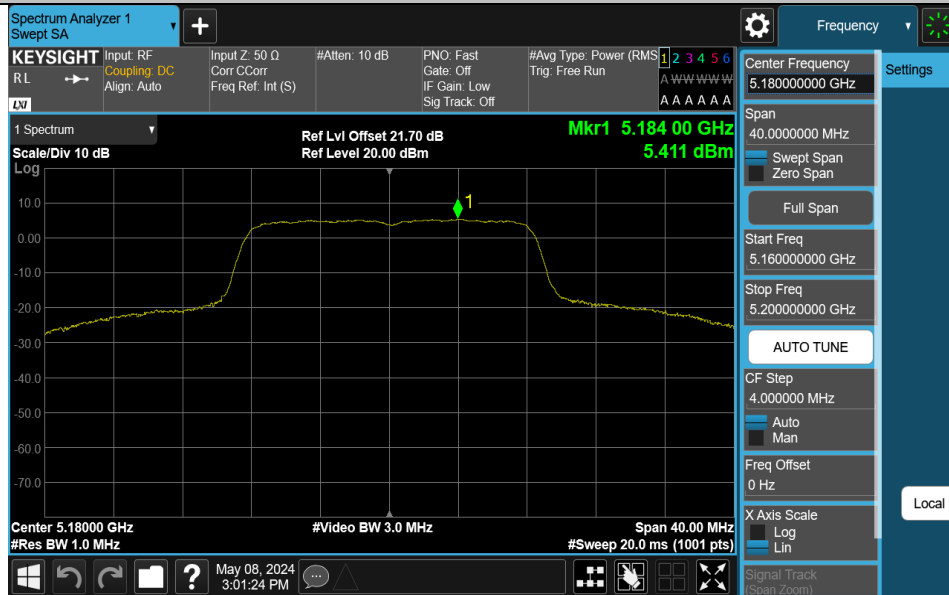
Appendix D: Maximum power spectral density Test Result

Test Mode	Antenna	Frequency[MHz]	Result [dBm/MHz]	Limit[dBm/MHz]	Verdict
11A	Ant1	5180	5.41	≤11.00	PASS
11A	Ant1	5200	5.66	≤11.00	PASS
11A	Ant1	5240	6.36	≤11.00	PASS
11A	Ant1	5745	3.07	≤30.00	PASS
11A	Ant1	5785	1.57	≤30.00	PASS
11A	Ant1	5825	1.21	≤30.00	PASS

Note: 1.The Result and Limit Unit is dBm/500 kHz in the band 5.725–5.85 GHz.
2.The Duty Cycle Factor and RBW Factor is compensated in the graph.

Test Graphs

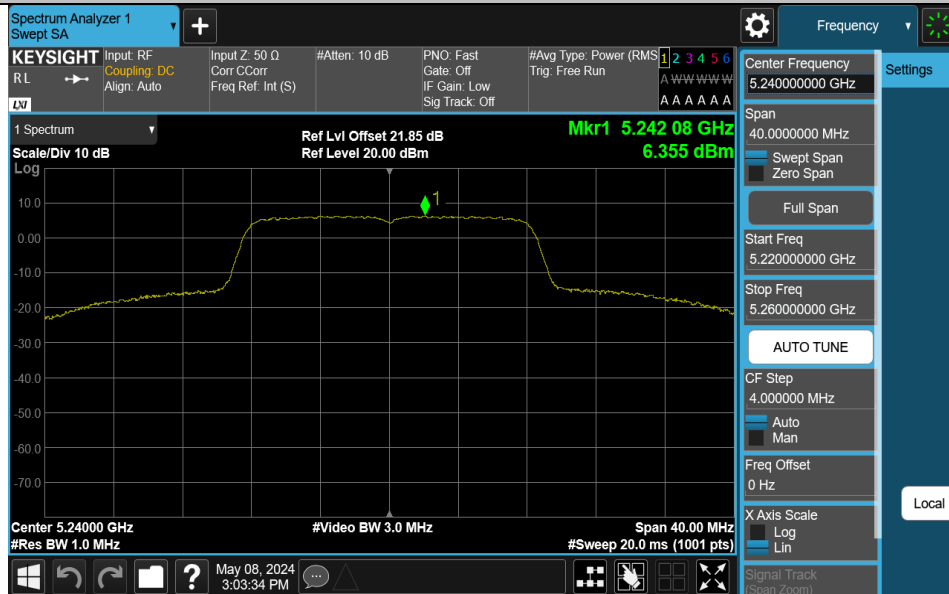
11A-Ant1-5180-PASS



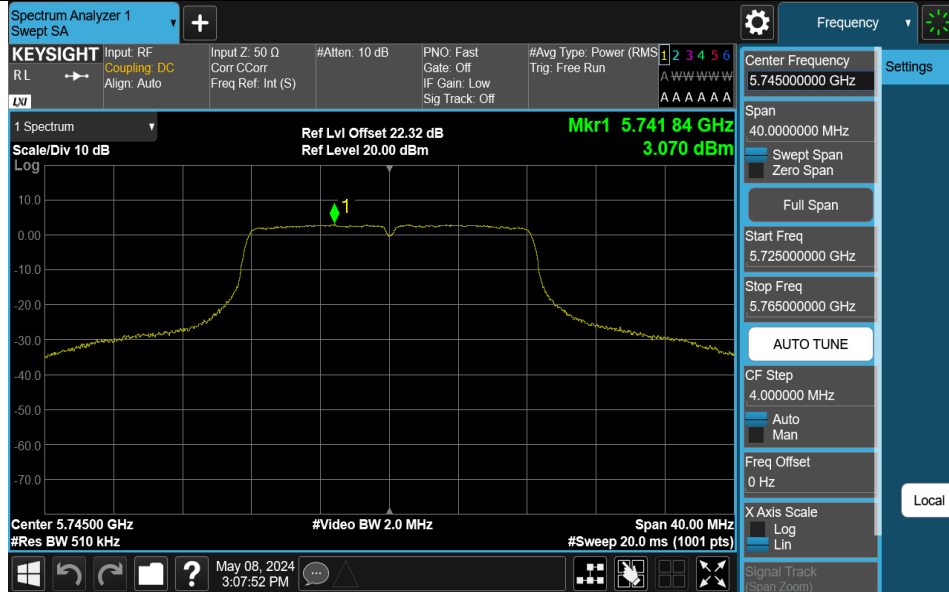
11A-Ant1-5200-PASS



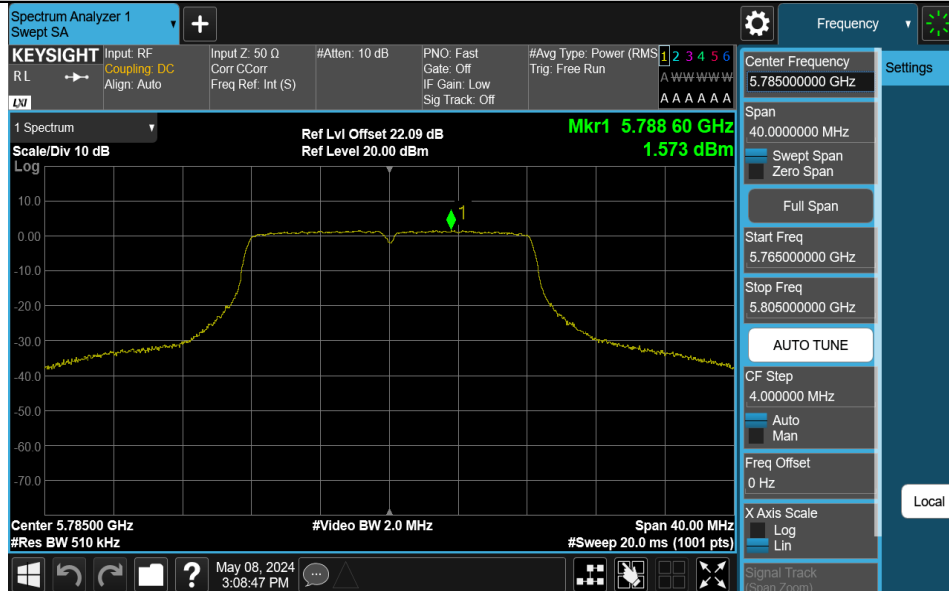
11A-Ant1-5240-PASS



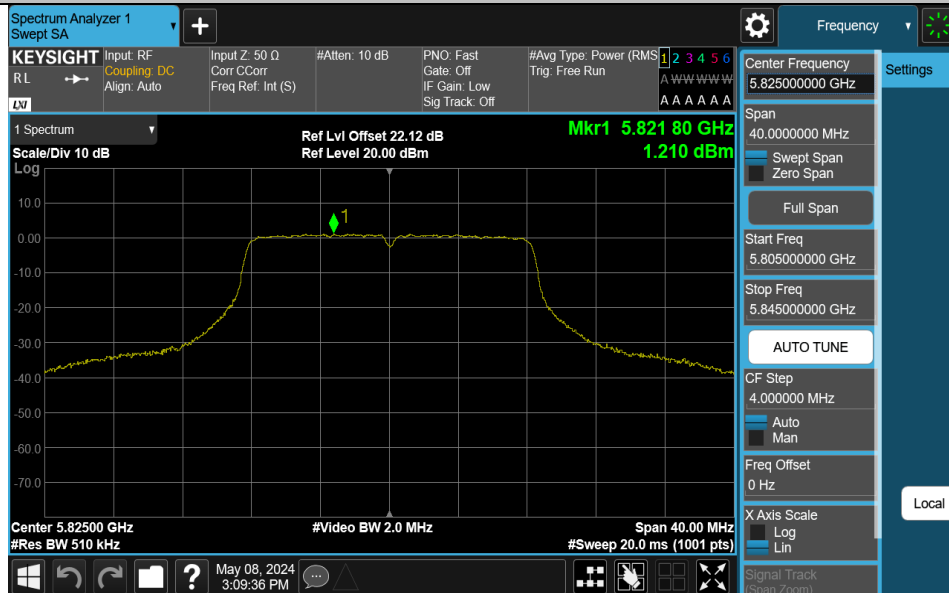
11A-Ant1-5745-PASS



11A-Ant1-5785-PASS



11A-Ant1-5825-PASS



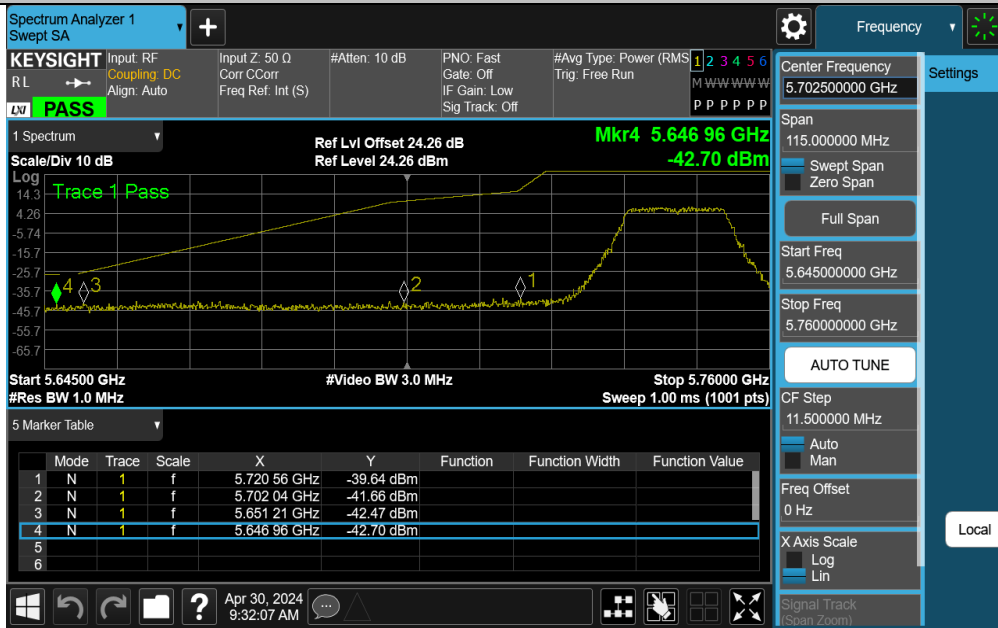
Appendix E: Band edge measurements

Test Result B4

Test Mode	Antenna	ChName	Frequency[MHz]	FreqRange [MHz]	Result [dBm]	Limit [dBm]	Verdict
11A	Ant1	Low	5745	5720~5725	-39.64	≤16.87	PASS
11A	Ant1	Low	5745	5700~5720	-41.66	≤10.57	PASS
11A	Ant1	Low	5745	5650~5700	-42.47	≤-26.10	PASS
11A	Ant1	Low	5745	5760~5650	-42.7	≤-27	PASS
11A	Ant1	High	5825	5850~5855	-42.92	≤16.34	PASS
11A	Ant1	High	5825	5855~5875	-40.65	≤11.15	PASS
11A	Ant1	High	5825	5875~5925	-43.27	≤-26.41	PASS
11A	Ant1	High	5825	5925~5935	-42.81	≤-27	PASS

Test Graphs B4

11A-Ant1-5745-PASS



11A-Ant1-5825-PASS



**Appendix F: Frequency Stability
Test Result**

Test Mode	Antenna	Frequency[MHz]	Voltage [Vdc]	Temperature (°C)	Deviation (Hz)	Deviation (ppm)	Limit (ppm)	Verdict
11A	Ant1	5180	NV	NT	60000.00	11.583012	20	PASS
11A	Ant1	5180	LV	NT	60000.00	11.583012	20	PASS
11A	Ant1	5180	HV	NT	80000.00	15.444015	20	PASS
11A	Ant1	5745	NV	NT	60000.00	10.443864	20	PASS
11A	Ant1	5745	LV	NT	60000.00	10.443864	20	PASS
11A	Ant1	5745	HV	NT	60000.00	10.443864	20	PASS

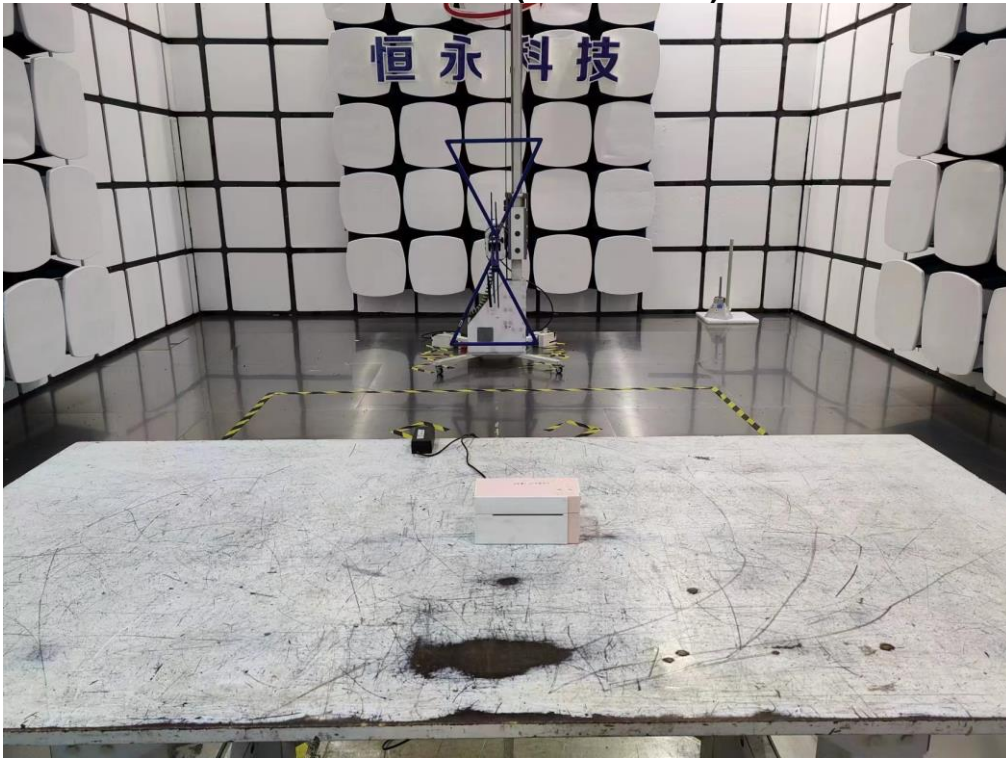
Test Mode	Antenna	Frequency[MHz]	Voltage [Vdc]	Temperature (°C)	Deviation (Hz)	Deviation (ppm)	Limit (ppm)	Verdict
11A	Ant1	5180	NV	-30	60000.00	11.583012	20	PASS
11A	Ant1	5180	NV	-20	60000.00	11.583012	20	PASS
11A	Ant1	5180	NV	-10	60000.00	11.583012	20	PASS
11A	Ant1	5180	NV	0	60000.00	11.583012	20	PASS
11A	Ant1	5180	NV	10	60000.00	11.583012	20	PASS
11A	Ant1	5180	NV	20	60000.00	11.583012	20	PASS
11A	Ant1	5180	NV	30	60000.00	11.583012	20	PASS
11A	Ant1	5180	NV	40	60000.00	11.583012	20	PASS
11A	Ant1	5180	NV	50	60000.00	11.583012	20	PASS
11A	Ant1	5745	NV	-30	60000.00	10.443864	20	PASS
11A	Ant1	5745	NV	-20	60000.00	10.443864	20	PASS
11A	Ant1	5745	NV	-10	60000.00	10.443864	20	PASS
11A	Ant1	5745	NV	0	60000.00	10.443864	20	PASS
11A	Ant1	5745	NV	10	60000.00	10.443864	20	PASS
11A	Ant1	5745	NV	20	60000.00	10.443864	20	PASS
11A	Ant1	5745	NV	30	60000.00	10.443864	20	PASS
11A	Ant1	5745	NV	40	60000.00	10.443864	20	PASS
11A	Ant1	5745	NV	50	60000.00	10.443864	20	PASS

11. TEST SETUP PHOTO

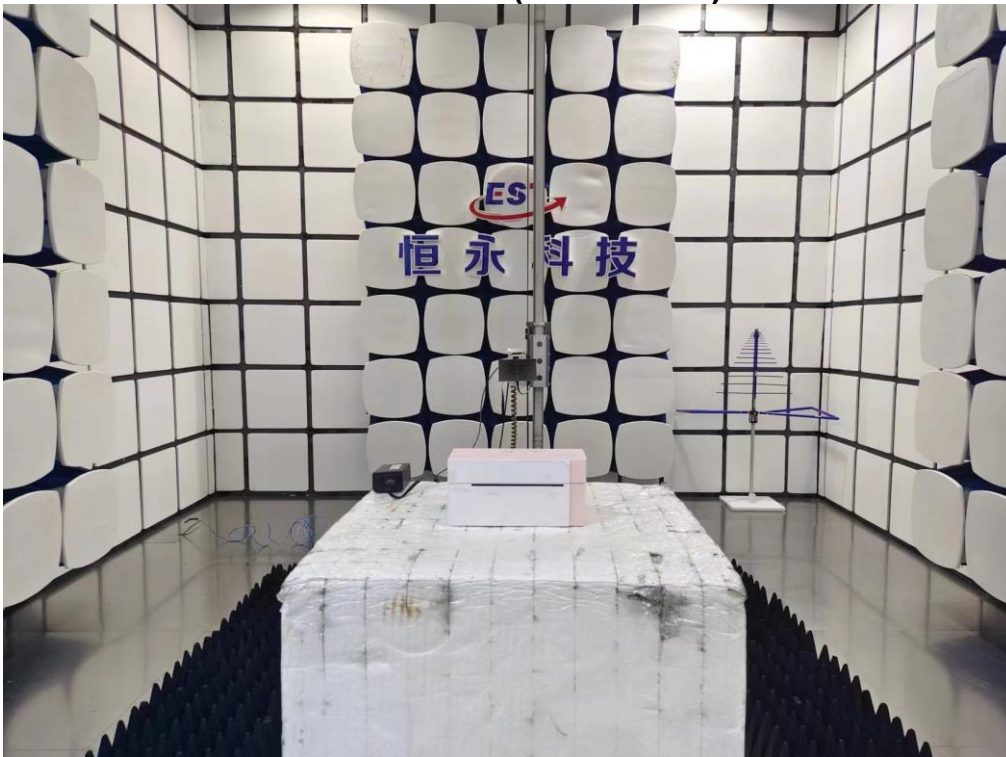
Conducted Test



Radiated Test (Below 1GHz)

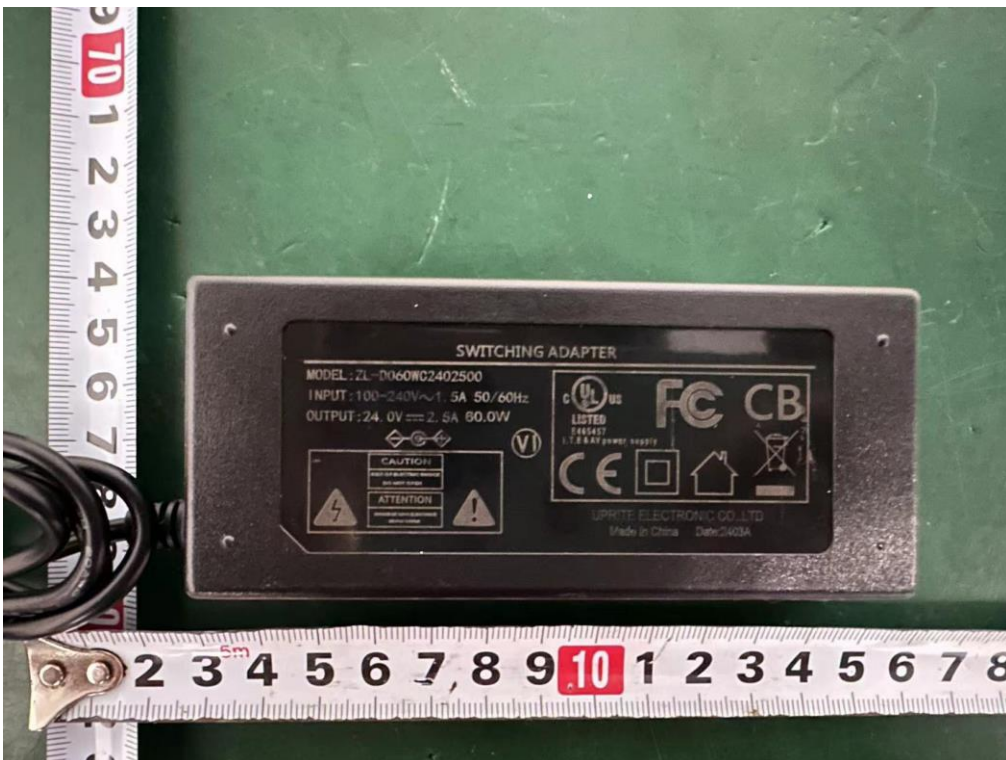


Radiated Test (Above 1GHz)



12. EUT PHOTO

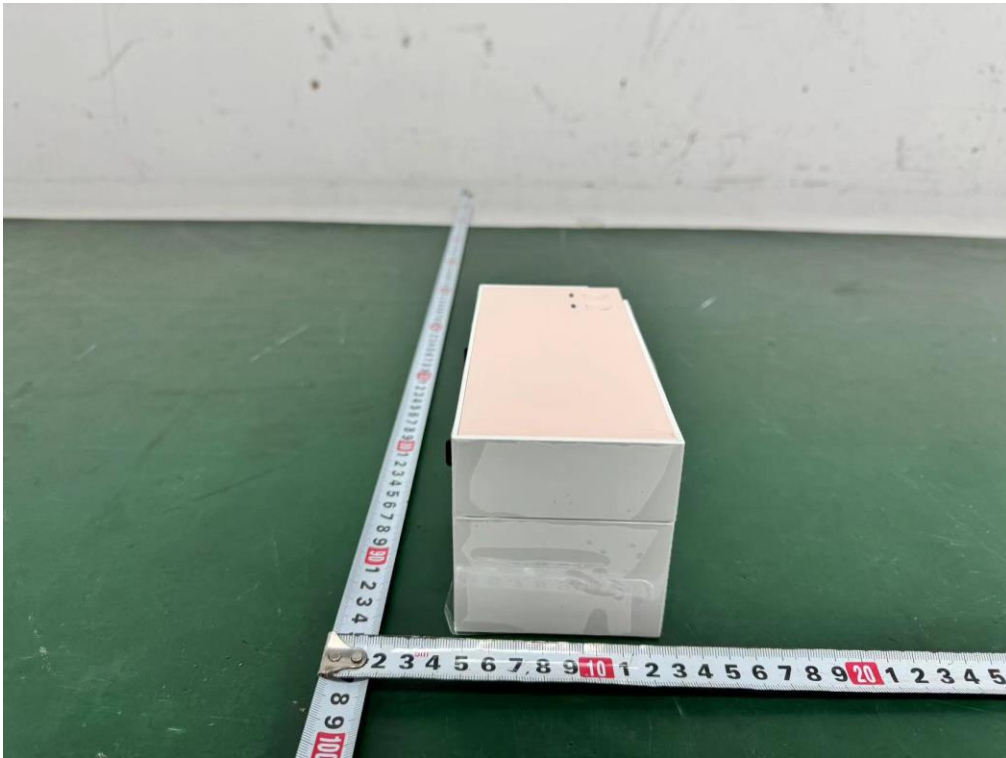
External Photos M/N: PM-344-WF



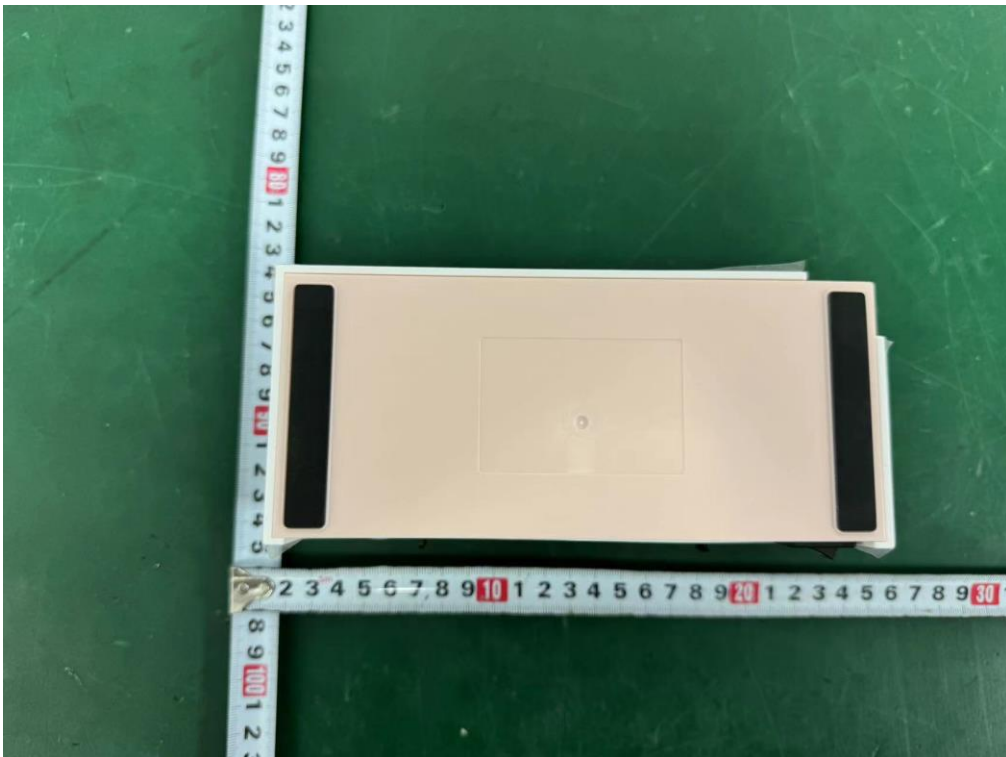
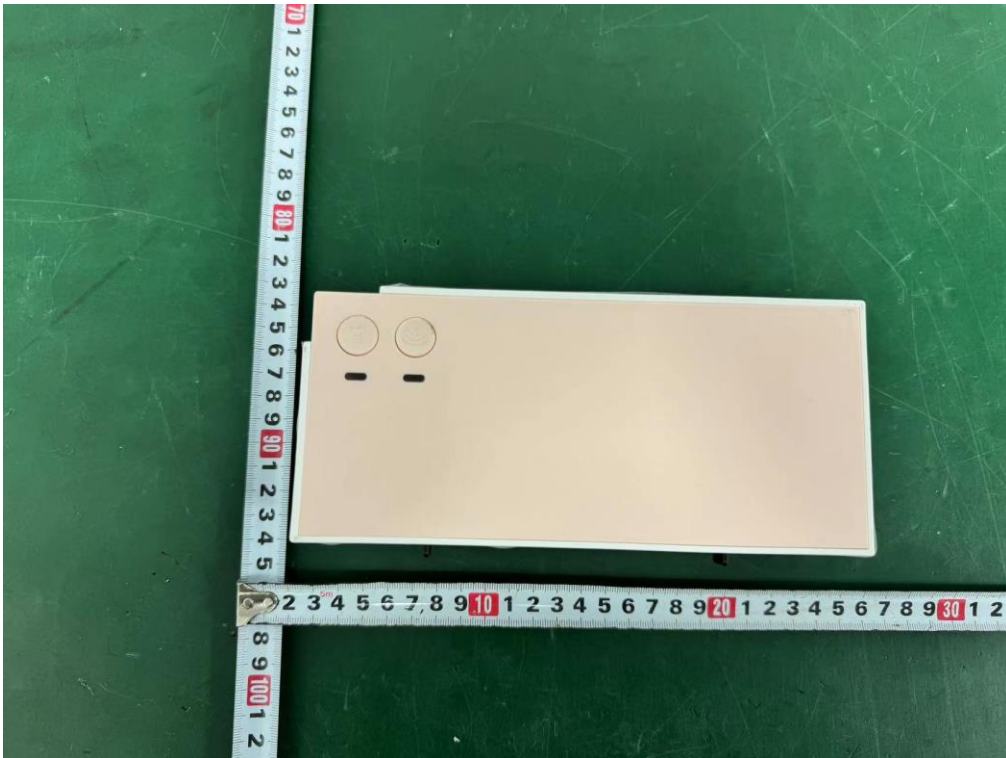
External Photos
M/N: PM-344-WF



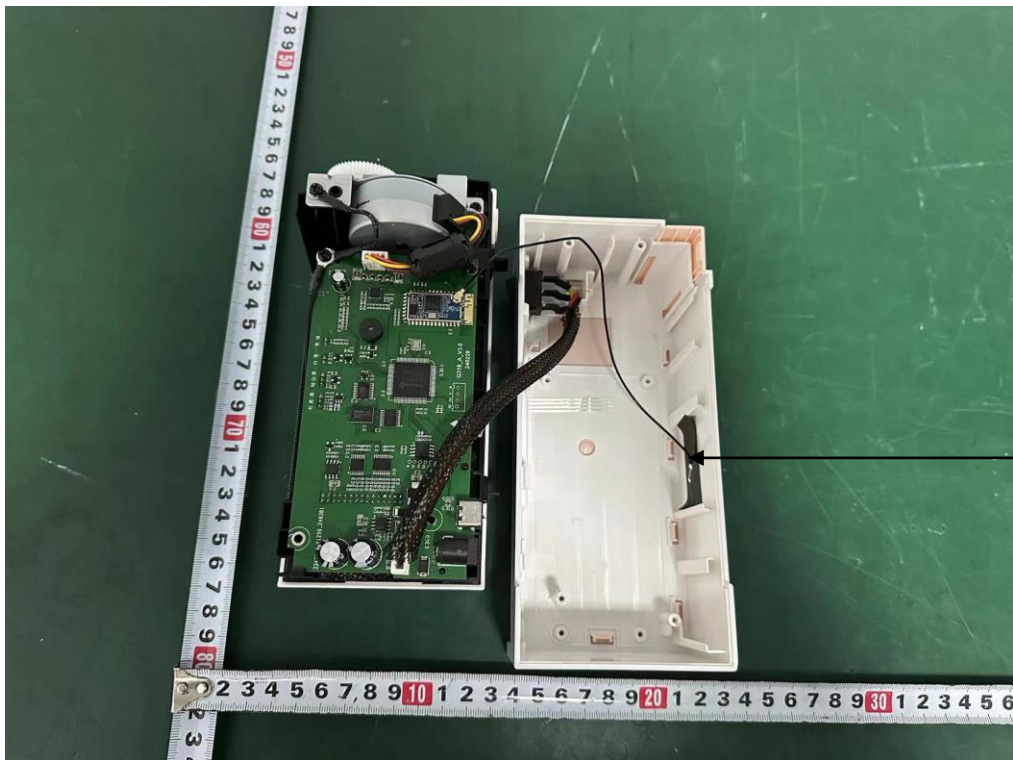
External Photos
M/N: PM-344-WF



External Photos
M/N: PM-344-WF

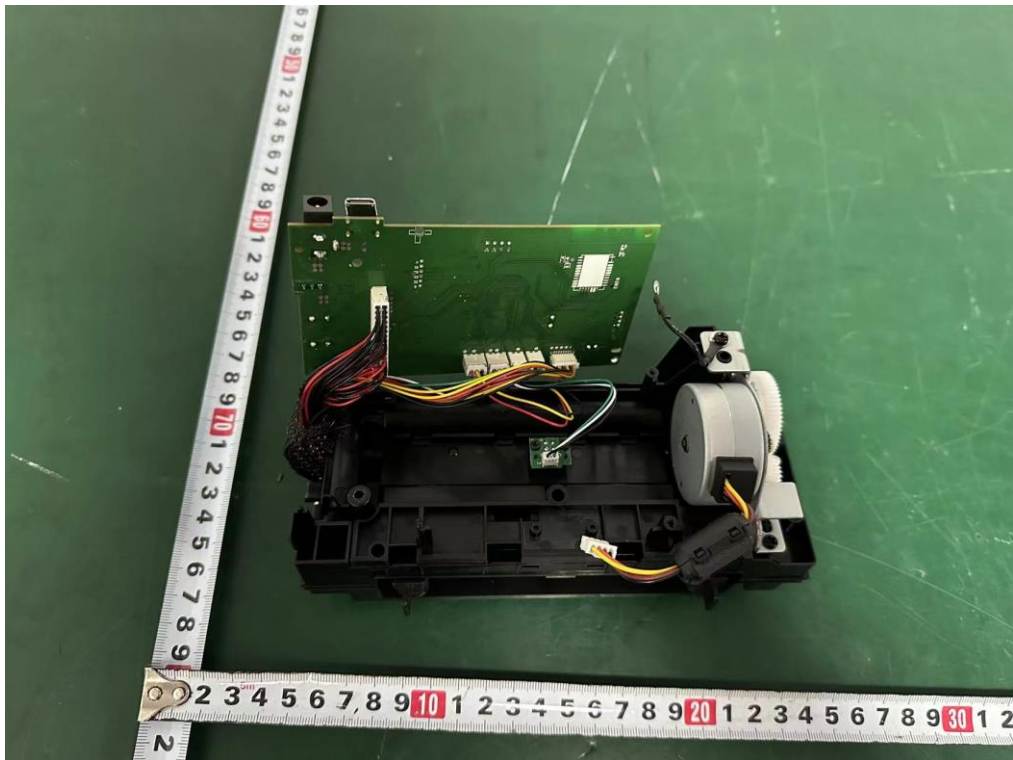
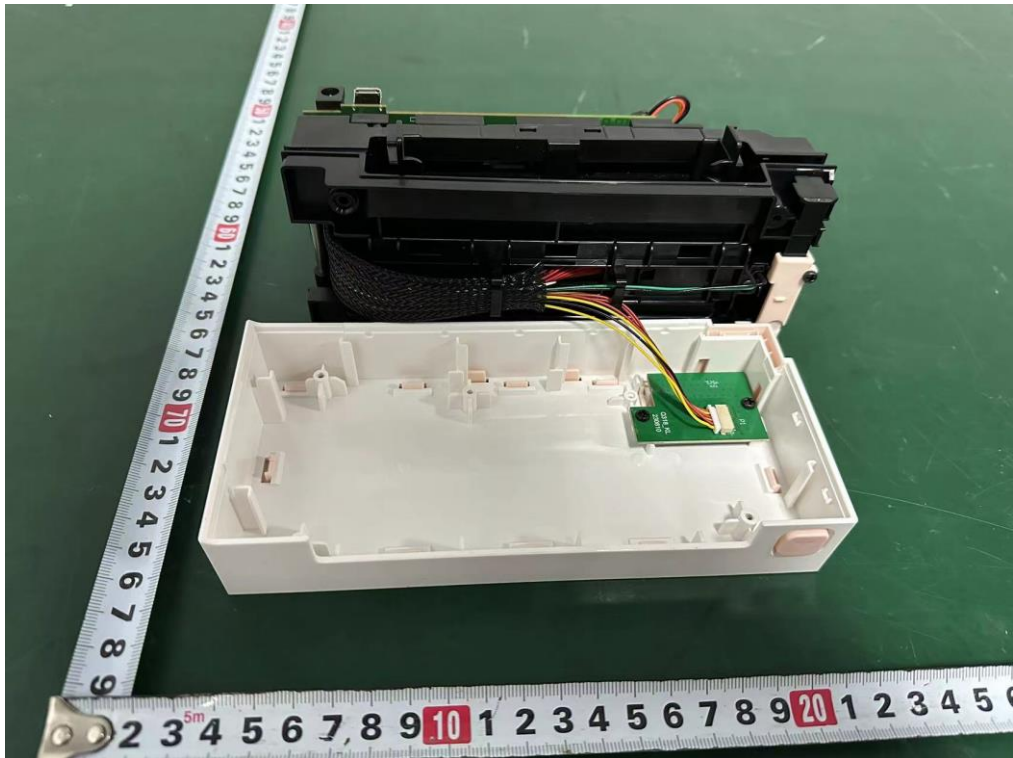


Internal Photos
M/N: PM-344-WF

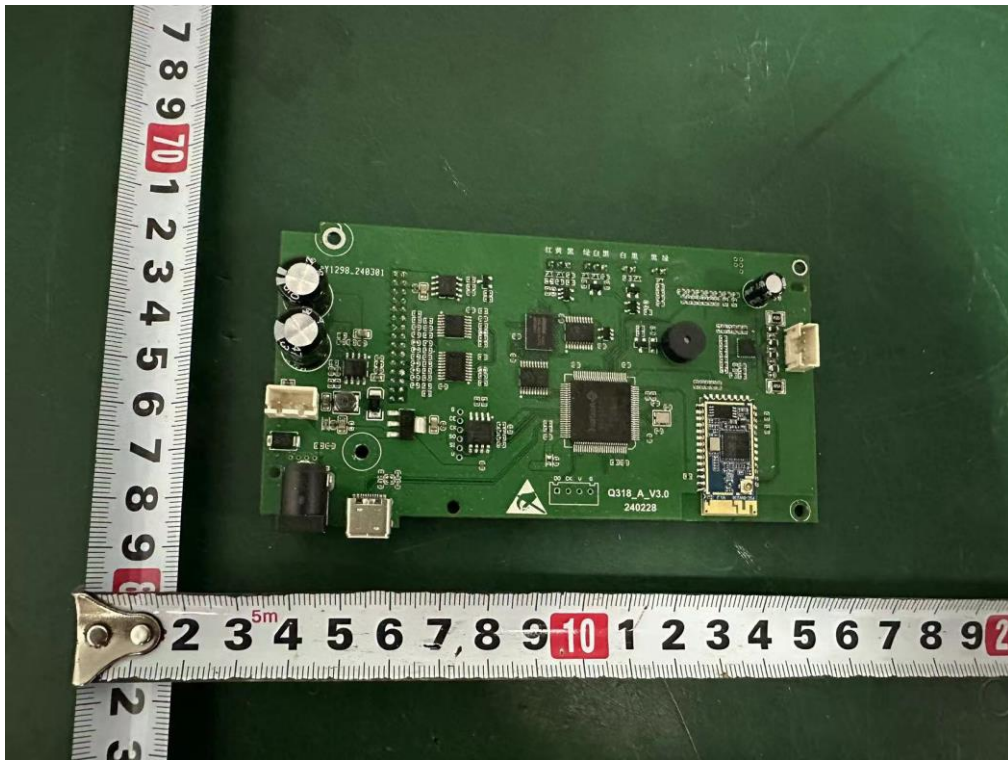
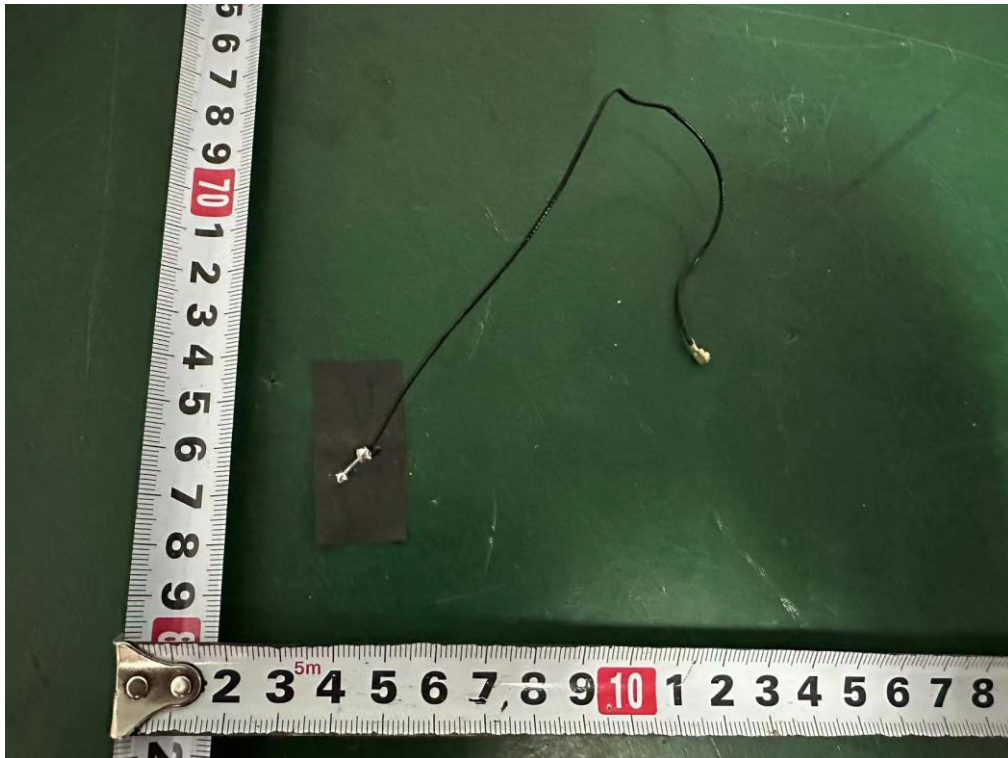


Bluetooth/
2.4G Wi-Fi/
5G Wi-Fi/

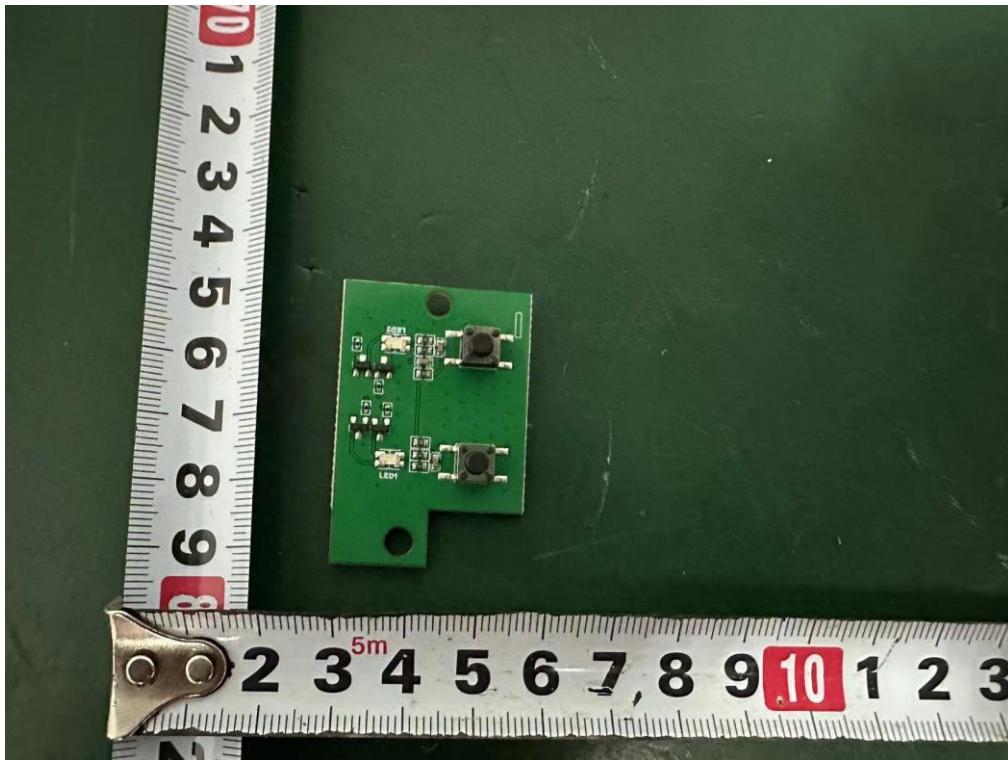
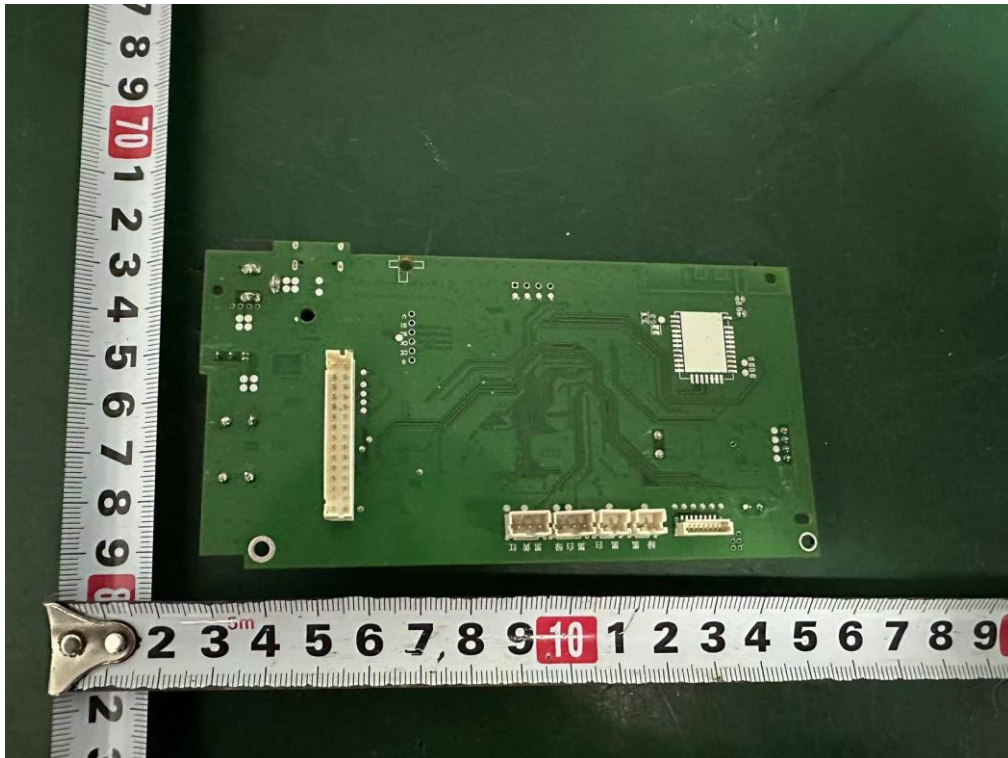
Internal Photos
M/N: PM-344-WF



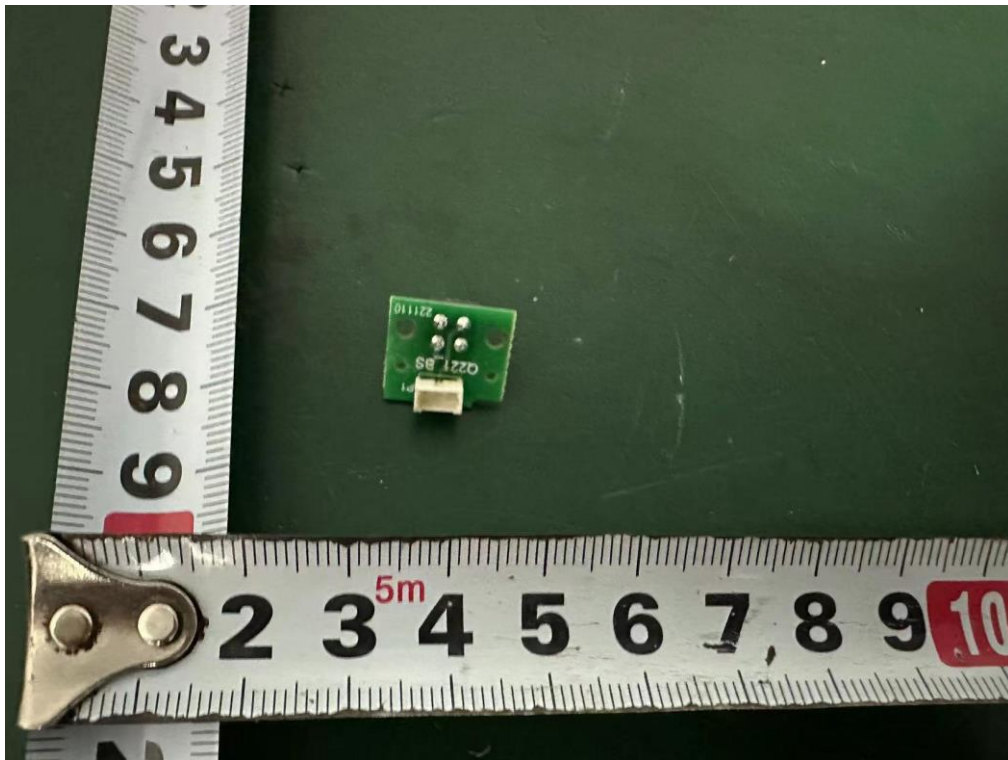
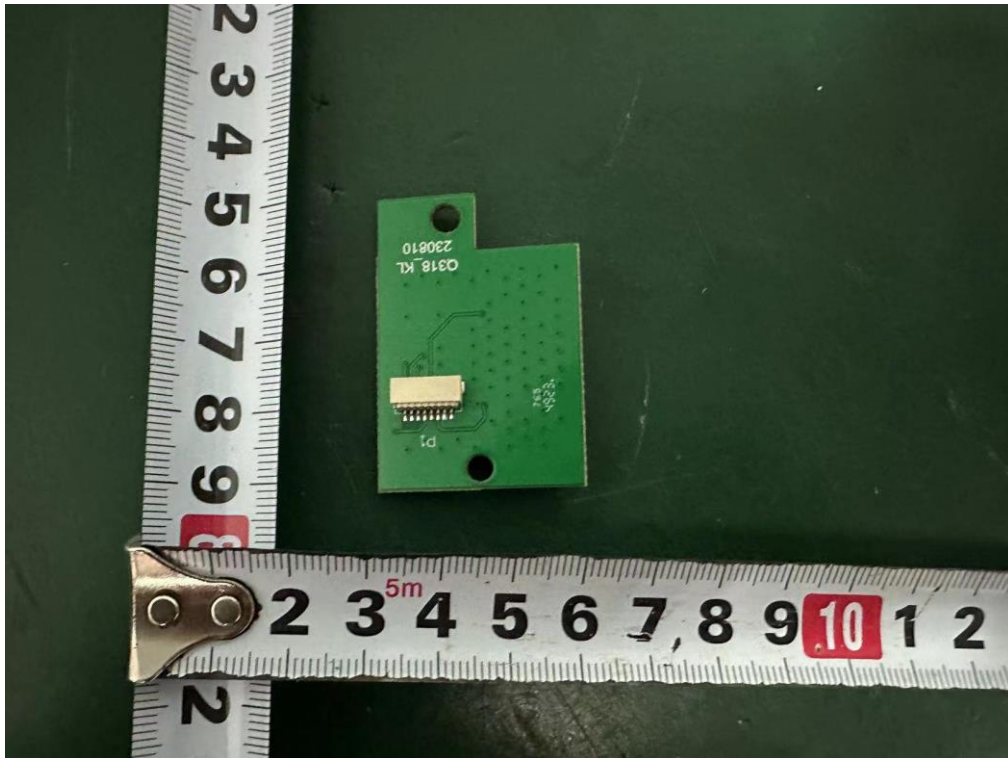
Internal Photos
M/N: PM-344-WF



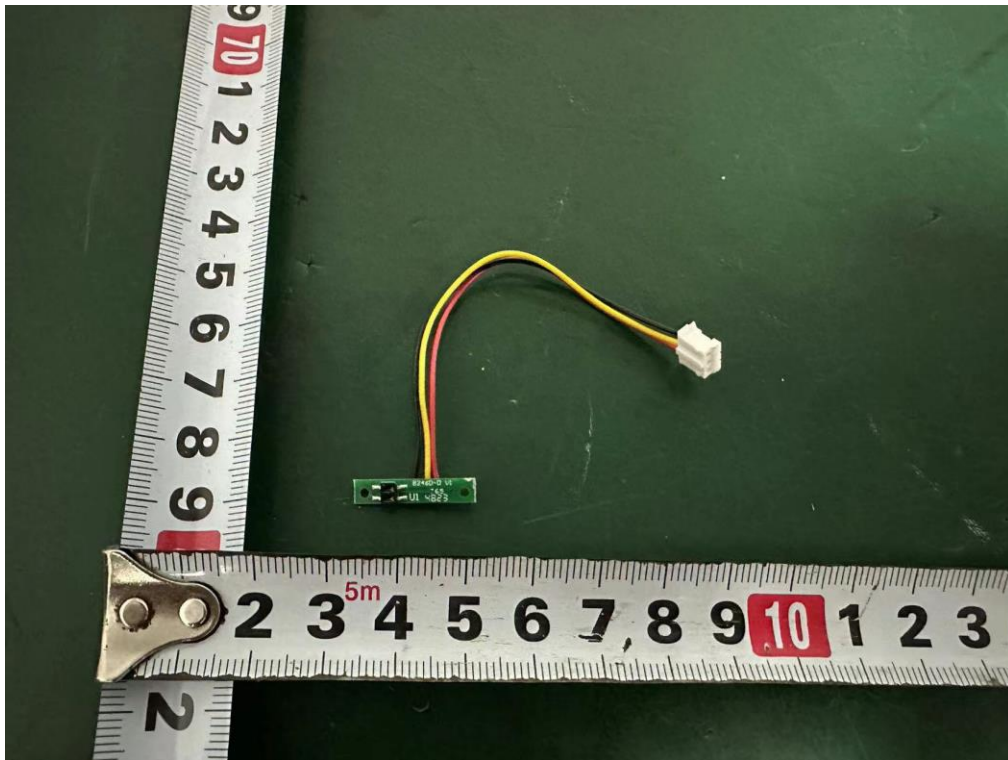
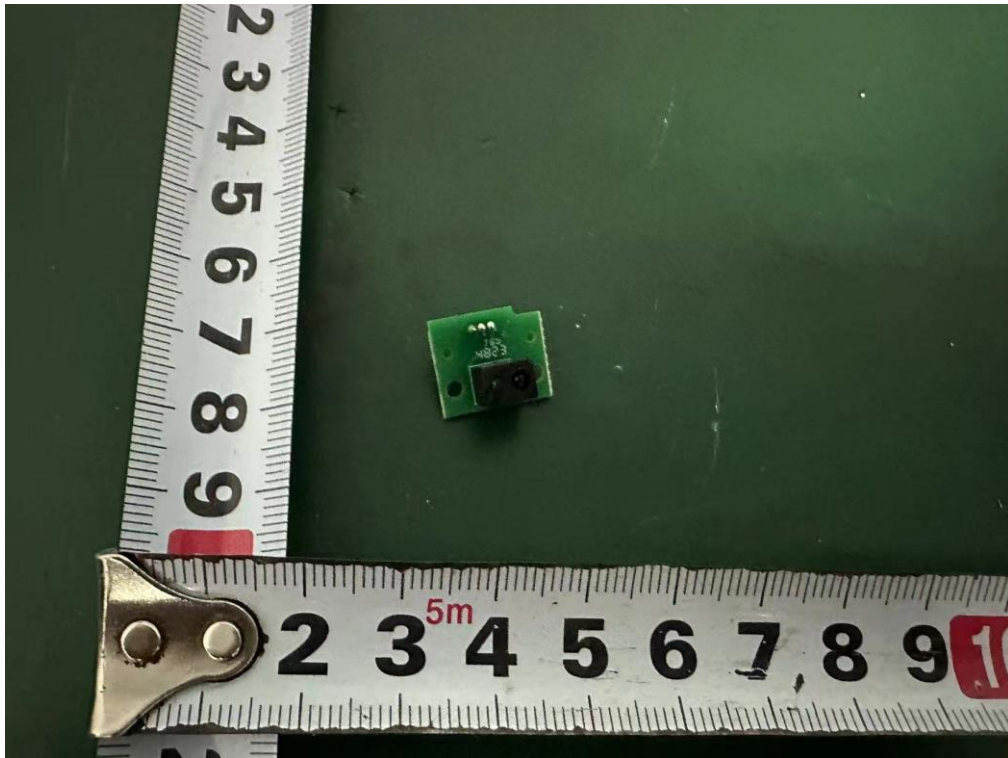
Internal Photos
M/N: PM-344-WF



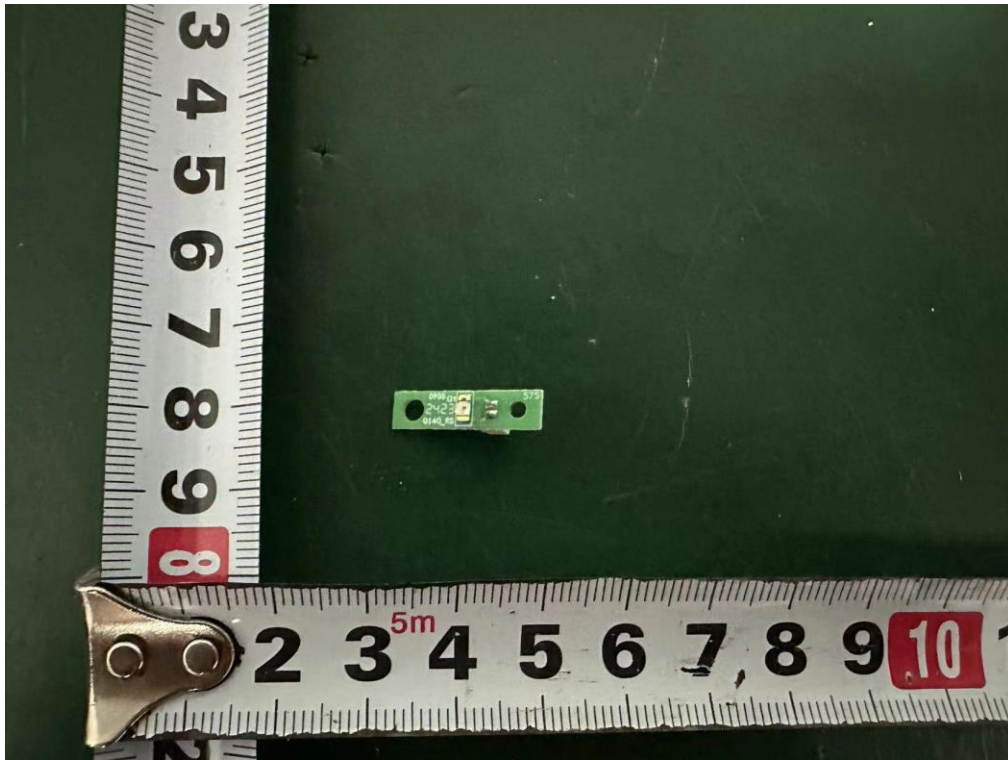
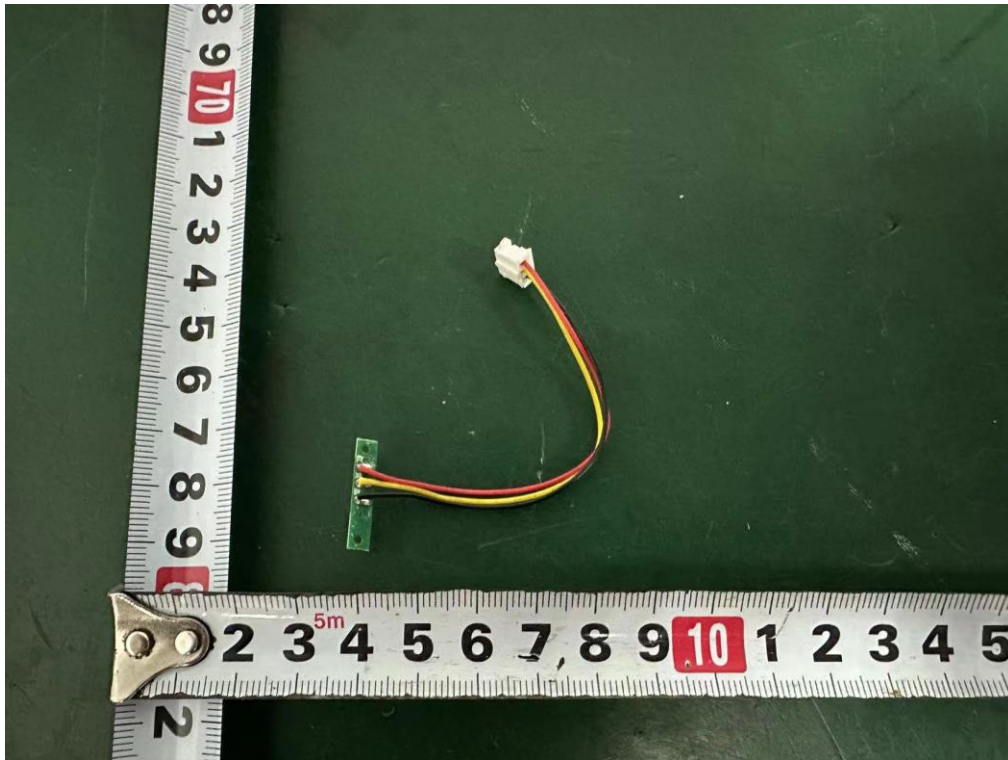
Internal Photos
M/N: PM-344-WF



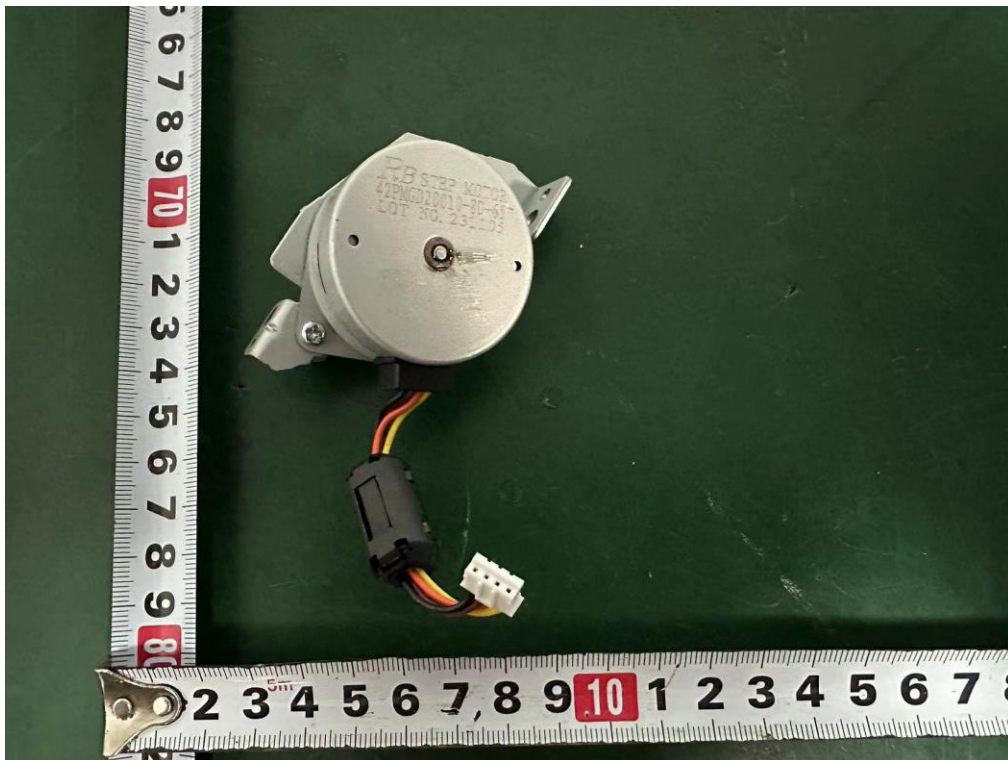
Internal Photos
M/N: PM-344-WF



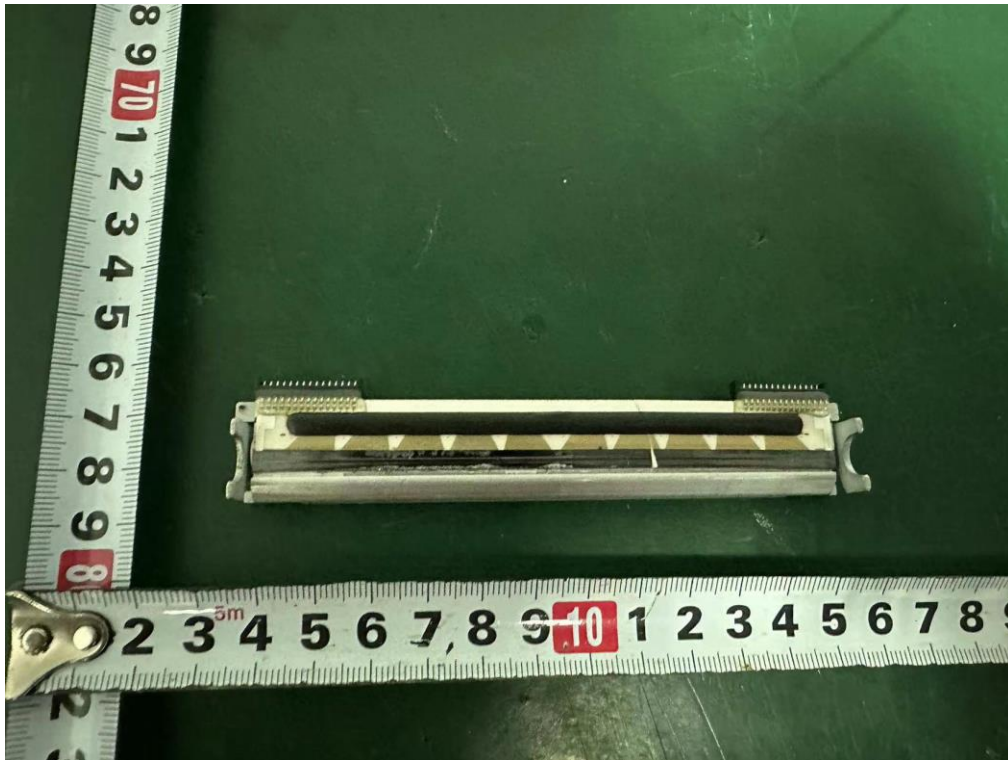
Internal Photos
M/N: PM-344-WF



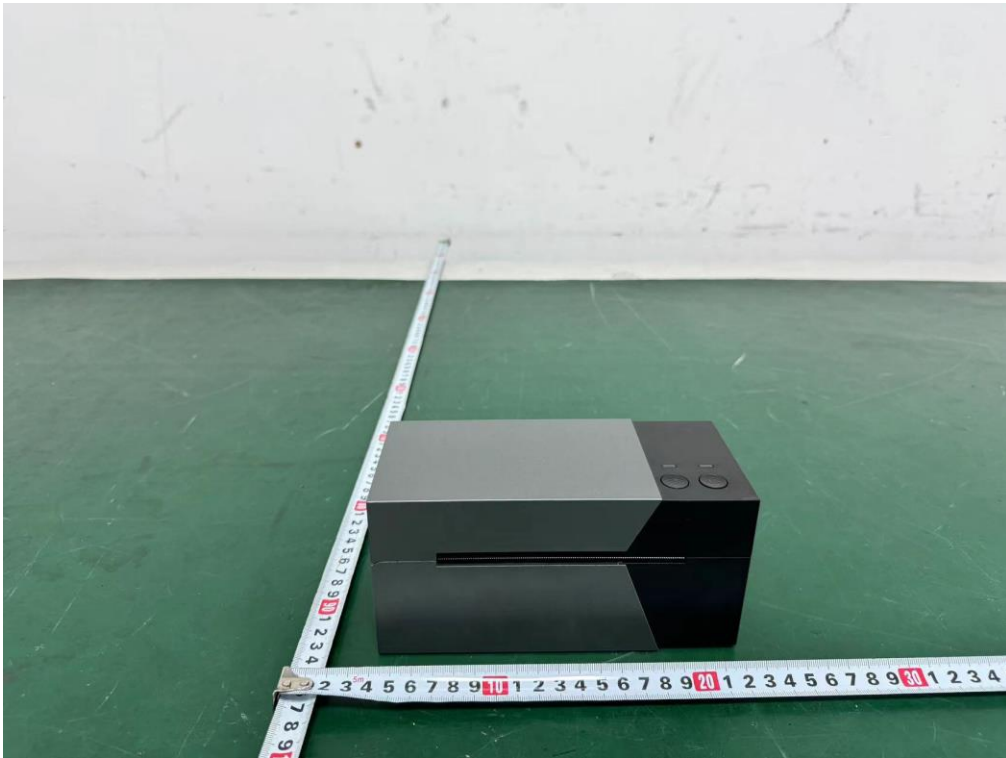
Internal Photos
M/N: PM-344-WF



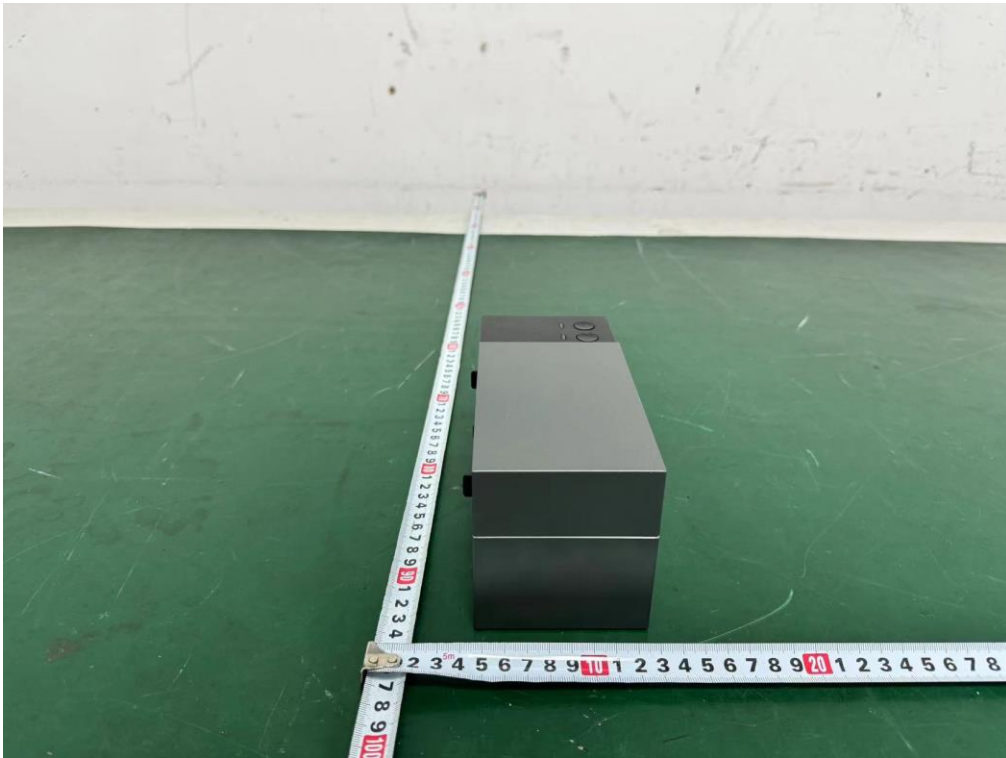
Internal Photos
M/N: PM-344-WF



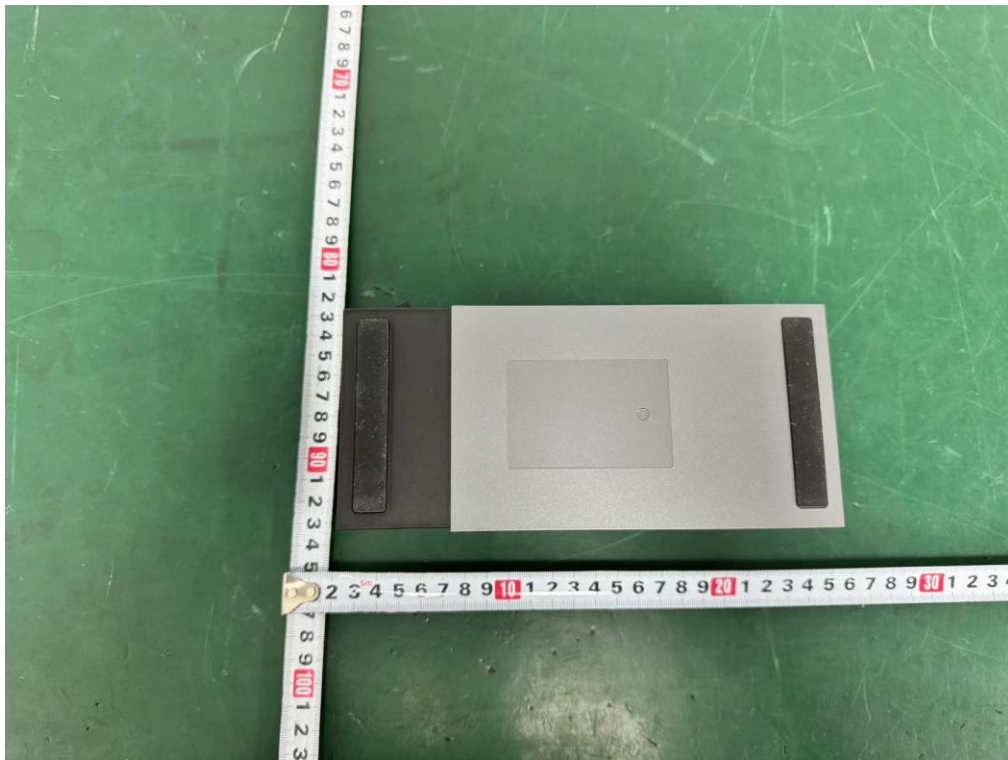
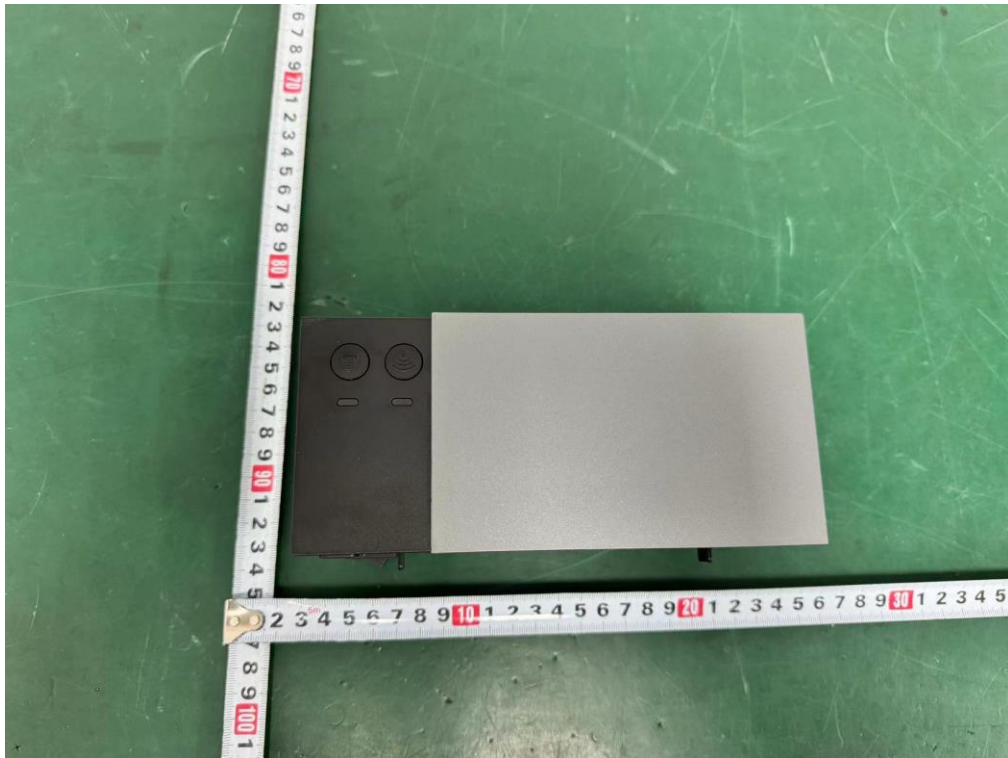
External Photos
M/N: PM-247-WF



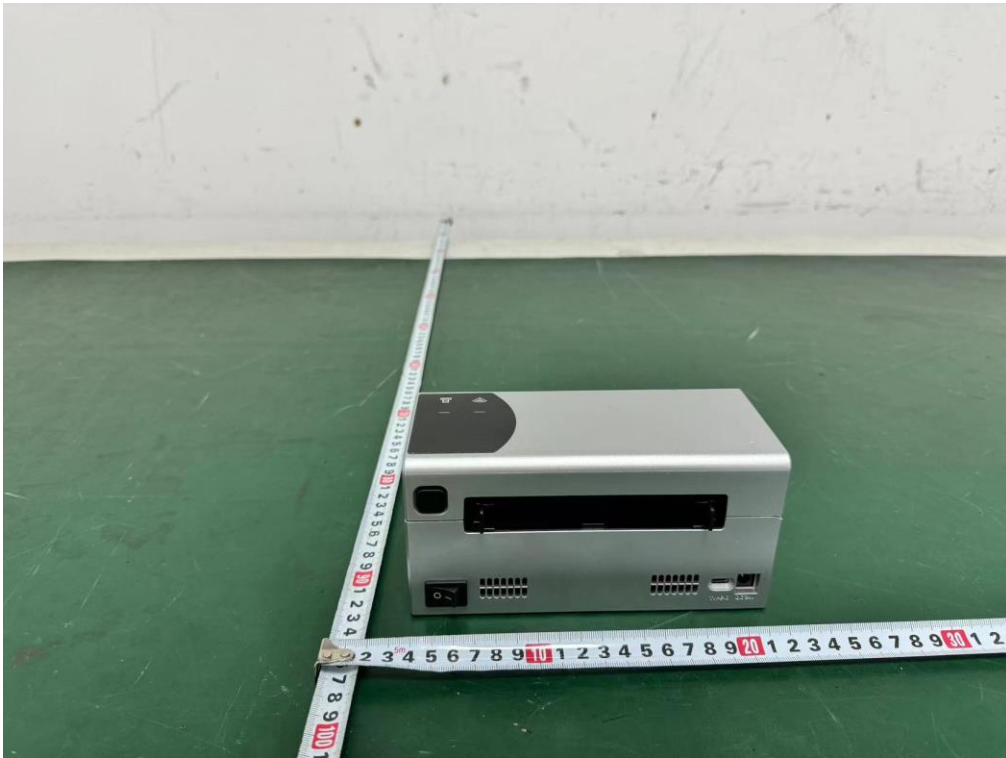
External Photos
M/N: PM-247-WF



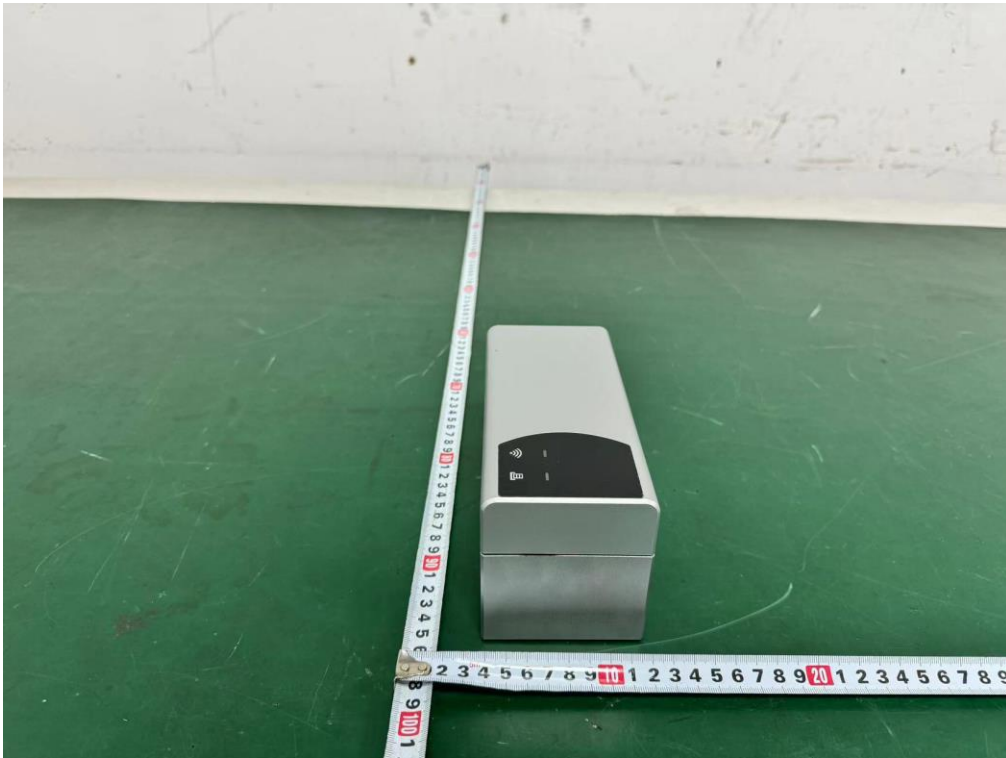
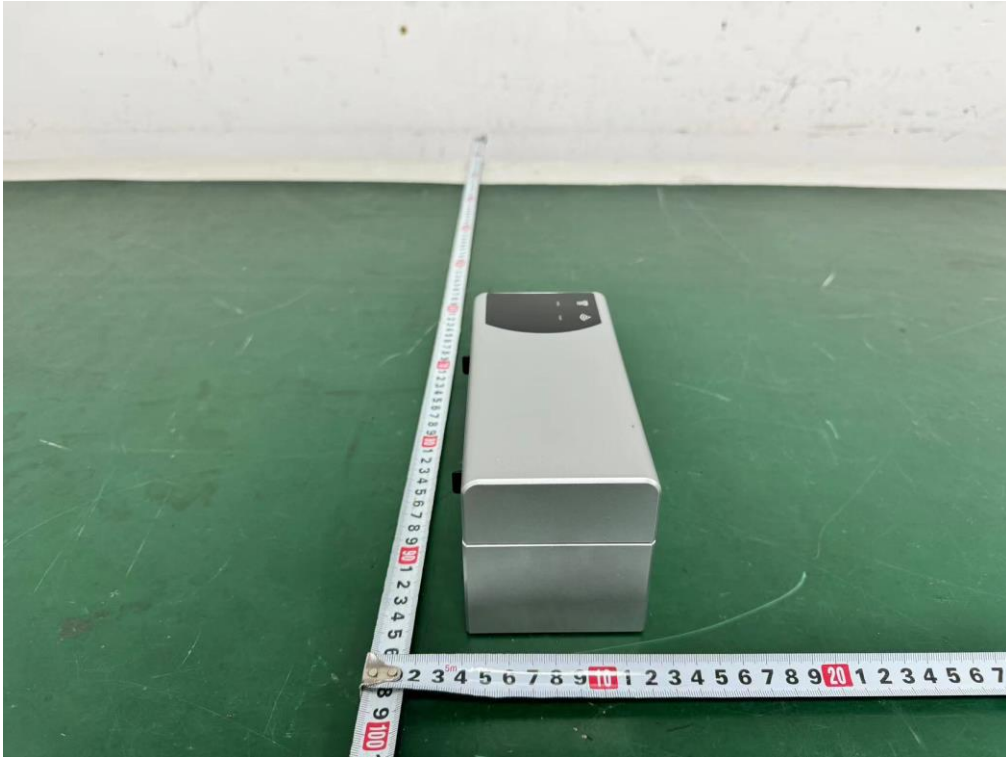
External Photos
M/N: PM-247-WF



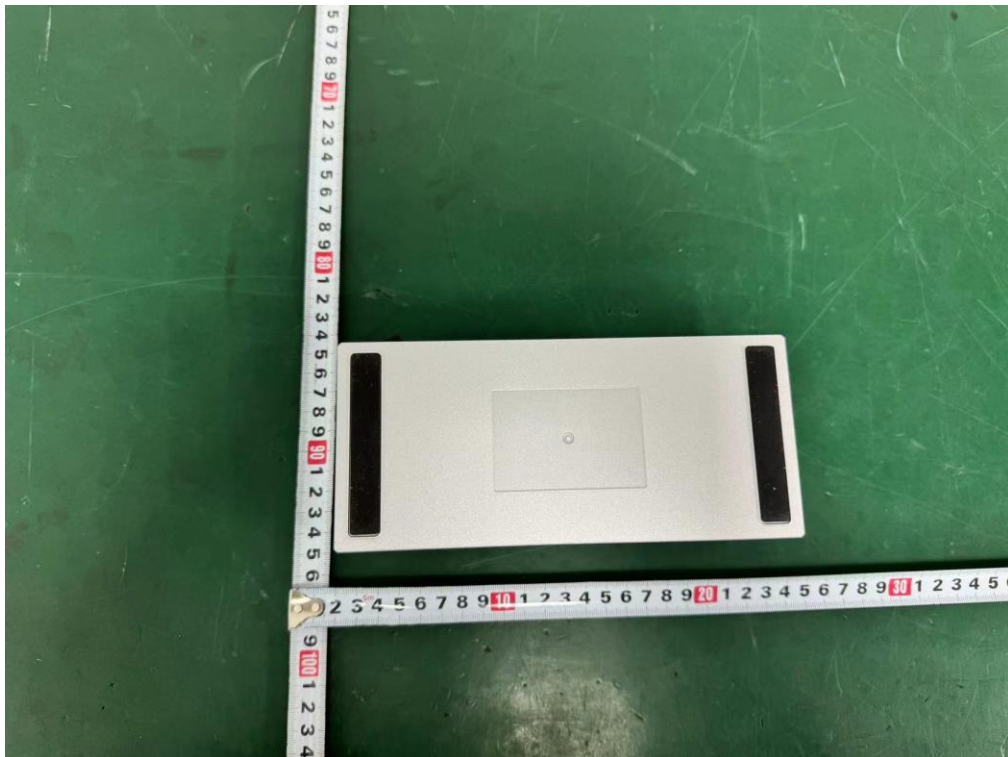
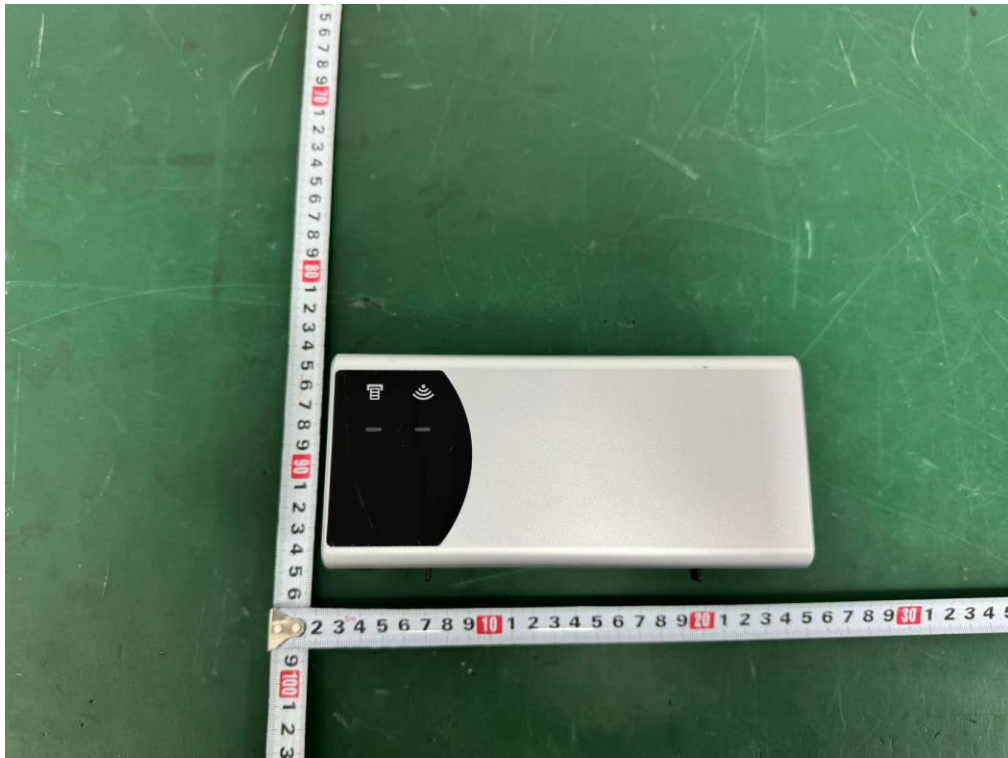
External Photos
M/N: PM-248-WF



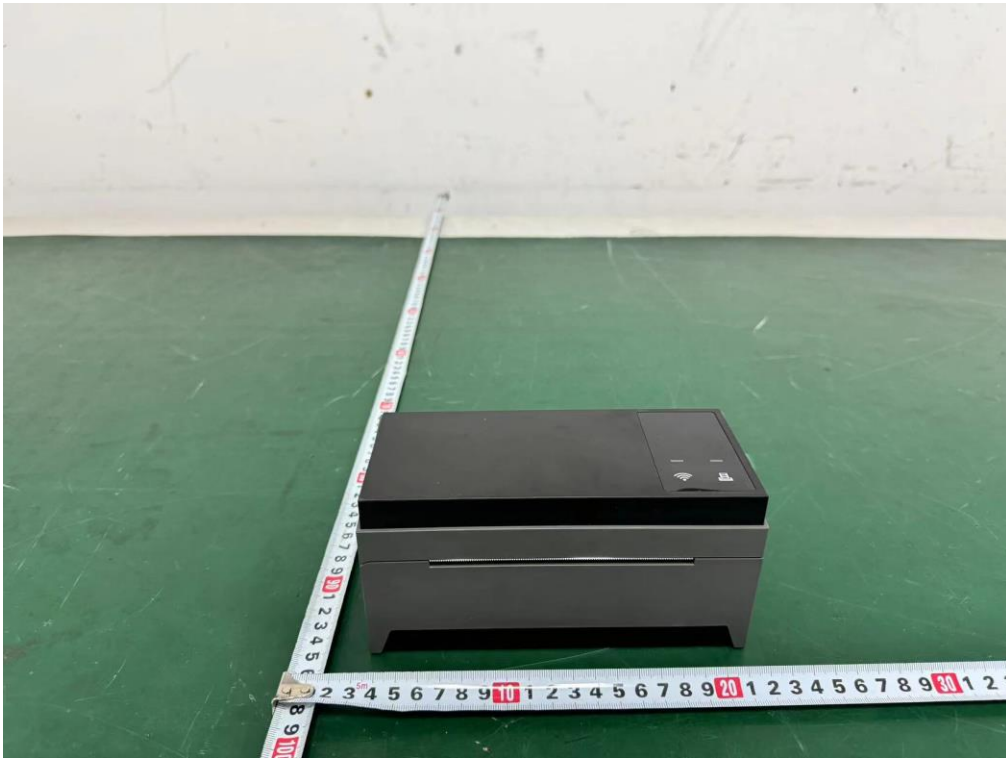
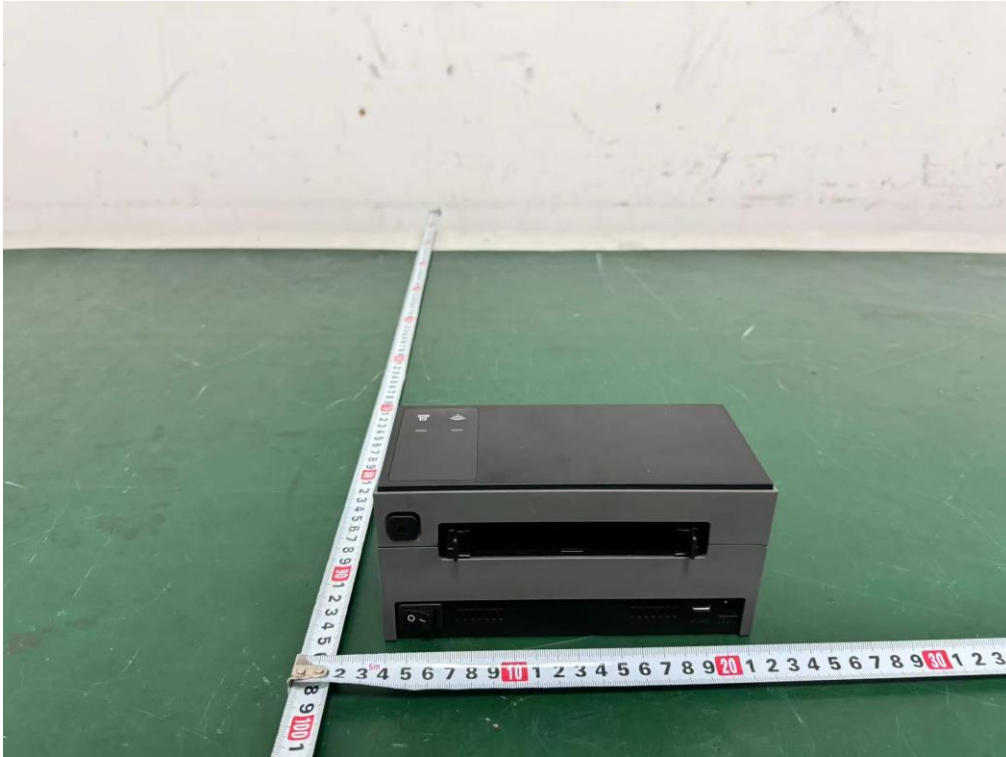
External Photos
M/N: PM-248-WF



External Photos
M/N: PM-248-WF



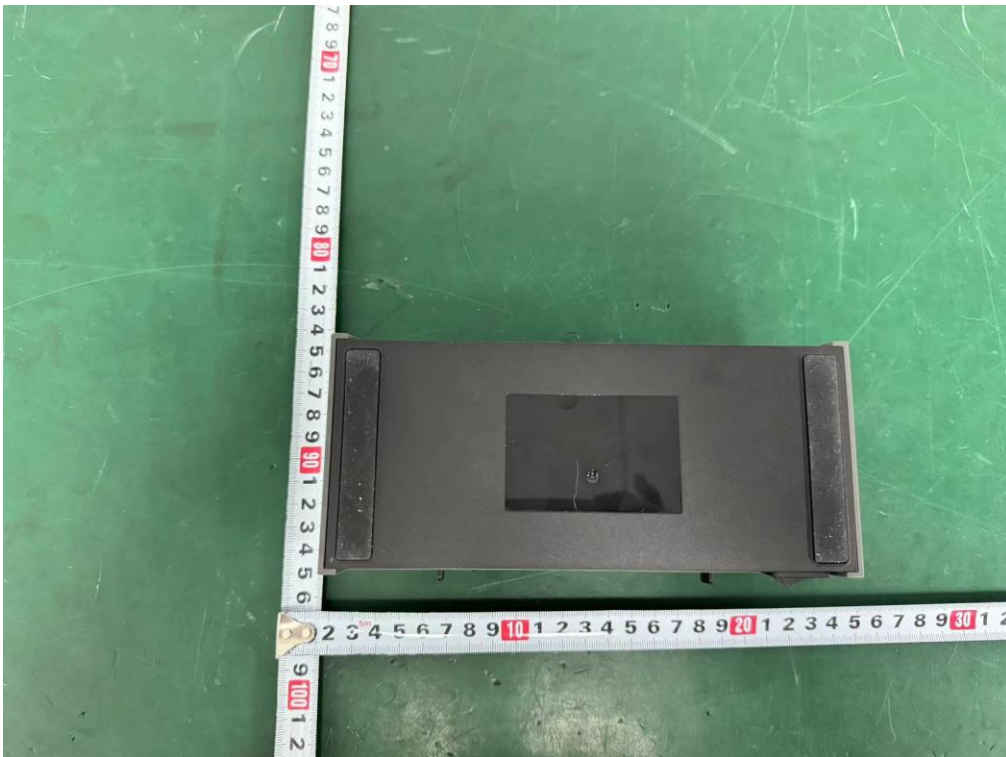
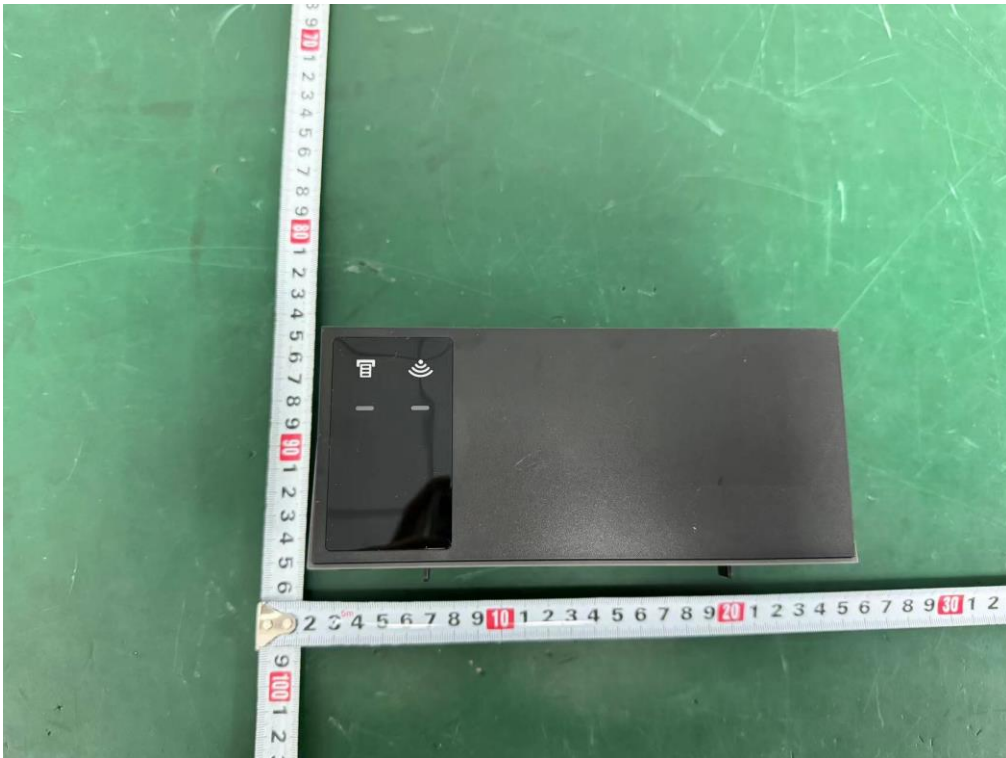
External Photos
M/N: PM-249-WF



External Photos
M/N: PM-249-WF



External Photos
M/N: PM-249-WF



End of Test Report