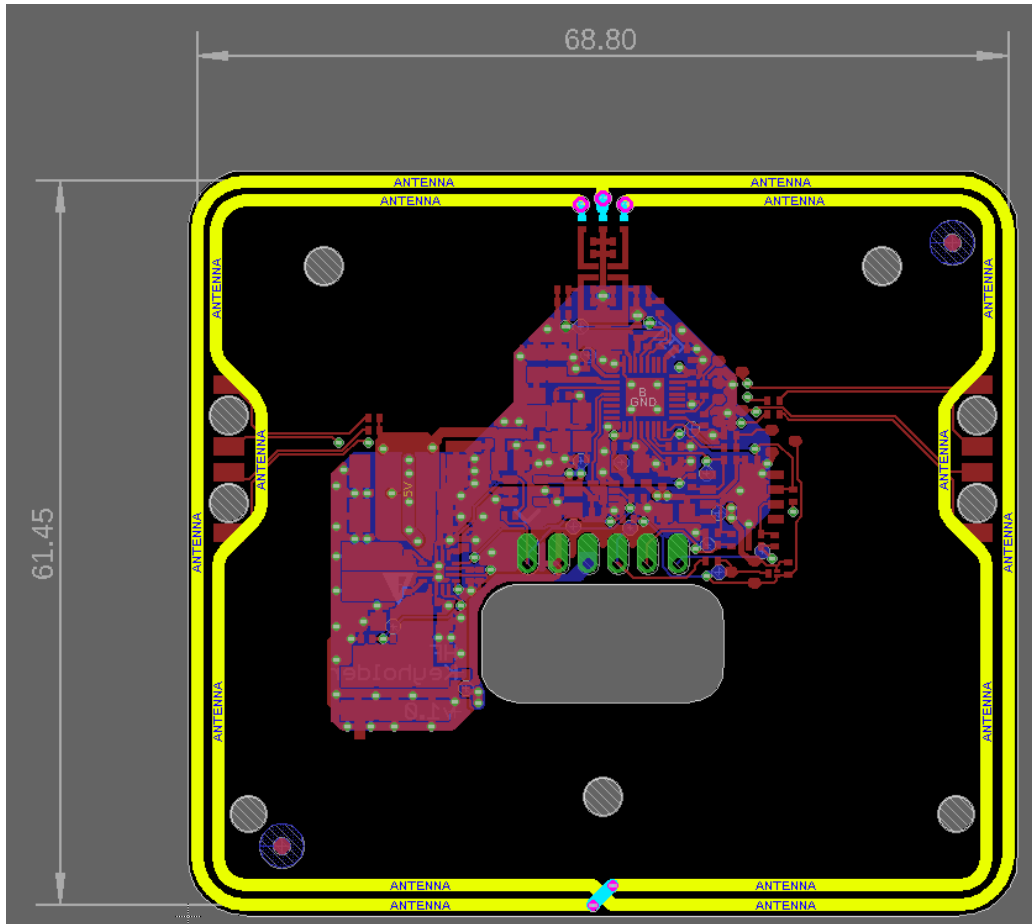


HF Keyholder v1.0 Antenna Specification

The HF-Keyholder uses a PCB antenna located on the bottom layer at the outer edge of the PCBA:



Copper Width: 1 mm

Copper thickness: 35 μm (according to pcb stackup specification)

Windings: 2

Dimensions: 61.45 mm x 68.80 mm

The center tap is not connected to the circuit, i.e. to GND.