

FCC TEST REPORT

Client Name : Shenzhen Lanlian Digital Technology Co., Ltd.
Address : 424, Qingfeng Building, 11 Longgang Rd., Pingnan
Community, Longgang Subdistrict, Longgang District,
Shenzhen
Product Name : Wireless Charging Clock Speaker
Date : Jun. 16, 2021

Shenzhen Anbotek Compliance Laboratory Limited



Contents

1. General Information.....	4
1.1. Client Information.....	4
1.2. Description of Device (EUT).....	4
1.3. Auxiliary Equipment Used During Test.....	5
1.4. Description of Test Modes.....	5
1.5. Description Of Test Setup.....	6
1.6. Test Equipment List.....	7
1.7. Measurement Uncertainty.....	8
1.8. Description of Test Facility.....	8
2. Summary of Test Results.....	9
3. Conducted Emission Test.....	10
3.1. Test Standard and Limit.....	10
3.2. Test Setup.....	10
3.3. Test Procedure.....	10
3.4. Test Data.....	10
4. Radiation Spurious Emission and Band Edge.....	15
4.1. Test Standard and Limit.....	15
4.2. Test Setup.....	15
4.3. Test Procedure.....	16
4.4. Test Data.....	17
5. Antenna Requirement.....	22
5.1. Test Standard and Requirement.....	22
5.2. Antenna Connected Construction.....	22
APPENDIX I -- TEST SETUP PHOTOGRAPH.....	23
APPENDIX II -- EXTERNAL PHOTOGRAPH.....	25
APPENDIX III -- INTERNAL PHOTOGRAPH.....	28

TEST REPORT

Applicant : Shenzhen Lanlian Digital Technology Co., Ltd.
Manufacturer : Dongguan Chuanglian Technology Co., Ltd.
Product Name : Wireless Charging Clock Speaker
Model No. : WD-300, WD-300 5~15W, WD-300A, WD-300B, WD-300C, WD-300D
Trade Mark : N.A
Rating(s) : Input: DC 5V/3A, DC 9V/2A, DC 12V/1.5A
Output: DC 5V/1A
Output power: 5W/7.5W/10W/15W Max
Test Standard(s) : **FCC Part15 Subpart C 2019, Paragraph 15.209**
Test Method(s) : **ANSI C63.10: 2013**

The device described above is tested by Shenzhen Anbotek Compliance Laboratory Limited to determine the maximum emission levels emanating from the device and the severe levels of the device can endure and its performance criterion. The measurement results are contained in this test report and Shenzhen Anbotek Compliance Laboratory Limited is assumed full of responsibility for the accuracy and completeness of these measurements. Also, this report shows that the EUT (Equipment Under Test) is technically compliant with the FCC Part 15 Subpart C requirements.

This report applies to above tested sample only and shall not be reproduced in part without written approval of Shenzhen Anbotek Compliance Laboratory Limited.

Date of Receipt : Apr. 15, 2021
Date of Test : Apr. 16~May 25, 2021

Prepared By : Ella Liang
(Ella Liang)

Approved & Authorized Signer : Kingkong Jin
(Kingkong Jin)

1. General Information

1.1. Client Information

Applicant	:	Shenzhen Lanlian Digital Technology Co., Ltd.
Address	:	424, Qingfeng Building, 11 Longgang Rd., Pingnan Community, Longgang Subdistrict, Longgang District, Shenzhen
Manufacturer	:	Dongguan Chuanglian Technology Co., Ltd.
Address	:	Level 3,Building 3,No.19 Jinpeng Road,Fenggang Town, Dongguan, Guangdong, China
Factory	:	Dongguan Chuanglian Technology Co., Ltd.
Address	:	Level 3,Building 3,No.19 Jinpeng Road,Fenggang Town,Dongguan

1.2. Description of Device (EUT)

Product Name	:	Wireless Charging Clock Speaker
Model No.	:	WD-300, WD-300 5~15W, WD-300A, WD-300B, WD-300C, WD-300D (Note: All samples are the same except mode name, so we prepare "WD-300" for test only.)
Trade Mark	:	N.A
Test Power Supply	:	AC 120V, 60Hz for adapter / AC 240V, 60Hz for adapter
Test Sample No.	:	1-2-1(Normal Sample), 1-2-1(Engineering Sample)
Product Description	Operation Frequency:	BDR+EDR:2402~2480MHz BLE: 2402~2480MHz WPT: 110.1-205KHz
	Number of Channel:	BDR+EDR: 79 Channels BLE: 40 Channels
	Modulation Type:	BDR+EDR: GFSK, $\pi/4$ -DQPSK BLE: GFSK WPT: FSK
	Antenna Type:	BDR+EDR+BLE: PCB Antenna WPT: Inductive loop coil Antenna
	Antenna Gain(Peak):	BDR+EDR: -0.58 dBi BLE: -0.58 dBi WPT: 0 dBi

Remark: 1) For a more detailed features description, please refer to the manufacturer's specifications or the User's Manual.2)This report is for 110.1-205KHz module.

1.3. Auxiliary Equipment Used During Test

Adapter	:	M/N: A2613 Input: 100-240V-2A,50-60Hz USB-C Output: V $\overline{=}$ 2.4A / 9V $\overline{=}$ 3A / 15V $\overline{=}$ 3A / 20V $\overline{=}$ 3A
Wireless charging load	:	Manufacturer: Shenzhen Ouju Technology Co., Ltd. M/N: CD2531 Power: 5W/7.5W/10W/15W Last Cal.: Oct. 26, 2020 Cal. Interval: 1 Year

1.4. Description of Test Modes

To investigate the maximum EMI emission characteristics generates from EUT, the test system was pre-scanning tested base on the consideration of following EUT operation mode or test configuration mode which possible have effect on EMI emission level. Each of these EUT operation mode(s) or test configuration mode(s) mentioned above was evaluated respectively.

Pretest Mode	Description
Mode 1	Charging+Wireless charging Mode

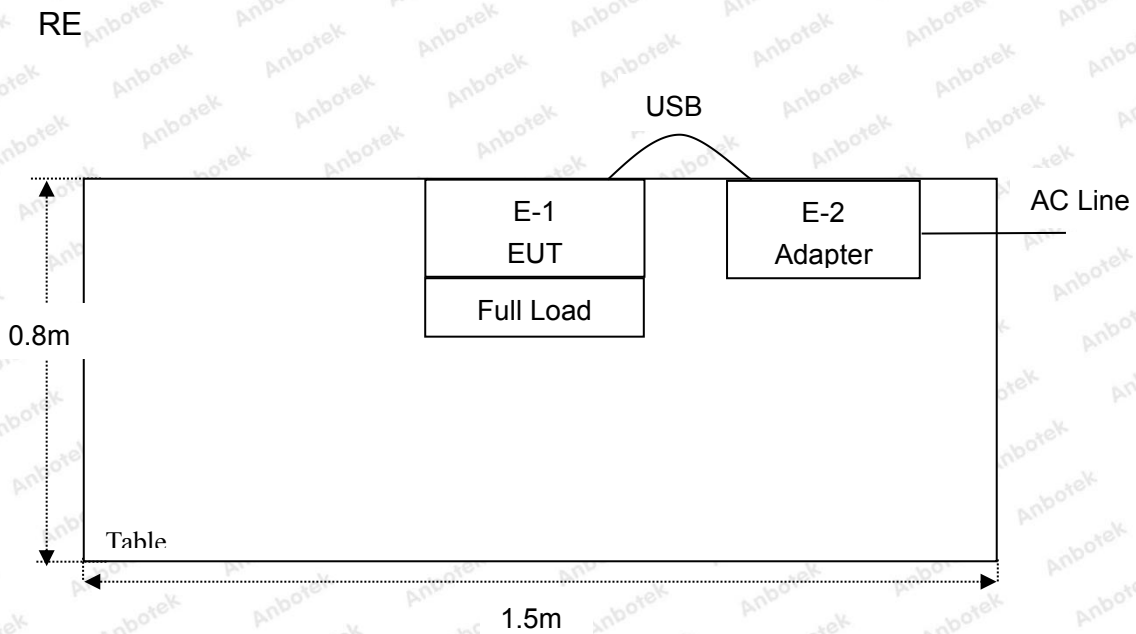
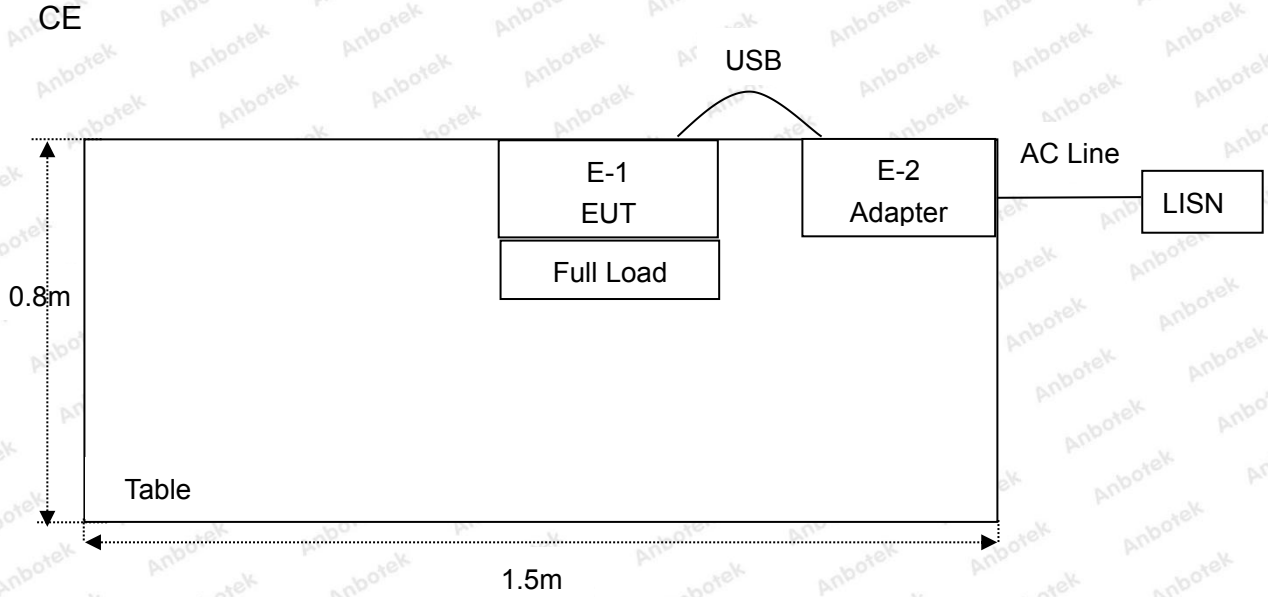
For Conducted Emission	
Final Test Mode	Description
Mode 1	Charging+Wireless charging Mode

For Radiated Emission	
Final Test Mode	Description
Mode 1	Charging+Wireless charging Mode

Note: (1)Test channel is 0.1500MHz.

(2)All the situation(full load, half load and empty load) has been tested,only the worst situation (full load, Wireless Output: 15W) was recorded in the report.

1.5. Description Of Test Setup



1.6. Test Equipment List

Item	Equipment	Manufacturer	Model No.	Serial No.	Last Cal.	Cal. Interval
1.	L.I.S.N. Artificial Mains Network	Rohde & Schwarz	ENV216	100055	Oct. 26, 2020	1 Year
2.	EMI Test Receiver	Rohde & Schwarz	ESCI	100627	Oct. 26, 2020	1 Year
3.	EMI Test Receiver	Rohde & Schwarz	ESR26	101481	Oct. 26, 2020	1 Year
4.	RF Switching Unit	Compliance Direction	RSU-M2	38303	Oct. 26, 2020	1 Year
5.	MAX Spectrum Analysis	Agilent	N9020A	MY51170037	Oct. 26, 2020	1 Year
6.	Preamplifier	SKET Electronic	BK1G18G30 D	KD17503	Oct. 26, 2020	1 Year
7.	Double Ridged Horn Antenna	Instruments corporation	GTH-0118	351600	Nov. 02, 2020	2 Year
8.	Bilog Broadband Antenna	Schwarzbeck	VULB9163	VULB 9163-289	Nov. 02, 2020	2 Year
9.	Loop Antenna	Schwarzbeck	FMZB1519B	00053	Nov. 02, 2020	2 Year
10.	Horn Antenna	A-INFO	LB-180400- KF	J211060628	Nov. 02, 2020	2 Year
11.	Pre-amplifier	SONOMA	310N	186860	Oct. 26, 2020	1 Year
12.	EMI Test Software EZ-EMC	SHURPLE	N/A	N/A	N/A	N/A
13.	RF Test Control System	YIHENG	YH3000	2017430	Oct. 26, 2020	1 Year
14.	Power Sensor	DAER	RPR3006W	15100041SN045	Oct. 26, 2020	1 Year
15.	Power Sensor	DAER	RPR3006W	15100041SN046	Oct. 26, 2020	1 Year
16.	MXA Spectrum Analysis	Agilent	N9020A	MY51170037	Oct. 26, 2020	1 Year
17.	MXG RF Vector Signal Generator	Agilent	N5182A	MY48180656	Oct. 26, 2020	1 Year
18.	Signal Generator	Agilent	E4421B	MY41000743	Oct. 26, 2020	1 Year
19.	DC Power Supply	IVYTECH	IV3605	1804D360510	Oct. 26, 2020	1 Year
20.	Constant Temperature Humidity Chamber	ZHONGJIAN	ZJ-KHWS80 B	N/A	Oct. 26, 2020	1 Year

1.7. Measurement Uncertainty

Radiation Uncertainty	:	Ur = 3.9 dB (Horizontal)
		Ur = 3.8 dB (Vertical)
Conduction Uncertainty	:	Uc = 3.4 dB

1.8. Description of Test Facility

The test facility is recognized, certified, or accredited by the following organizations:

FCC-Registration No.: 184111

Shenzhen Anbotek Compliance Laboratory Limited, EMC Laboratory has been registered and fully described in a report filed with the (FCC) Federal Communications Commission. The acceptance letter from the FCC is maintained in our files. Registration No. 184111, September 30, 2020.

ISED-Registration No.: 8058A

Shenzhen Anbotek Compliance Laboratory Limited, EMC Laboratory has been registered and fully described in a report filed with the (ISED) Innovation, Science and Economic Development Canada. The acceptance letter from the ISED is maintained in our files. Registration 8058A, September 30, 2020.

Test Location

Shenzhen Anbotek Compliance Laboratory Limited.

1/F, Building D, Sogood Science and Technology Park, Sanwei community, Hangcheng Street, Bao'an District, Shenzhen, Guangdong, China.518102

2. Summary of Test Results

Standard Section	Test Item	Result
FCC Part 15, Paragraph 15.207	Conducted Emission Test	PASS
FCC Part 15, Paragraph 15.209(a)(f)	Spurious Emission	PASS
Part 15.203	Antenna Requirement	PASS

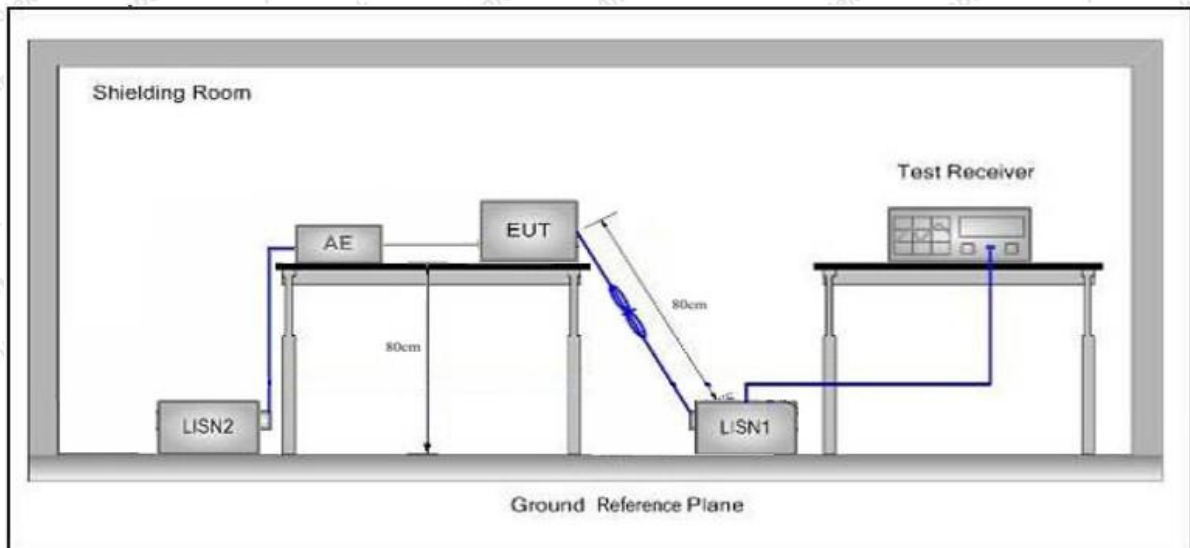
3. Conducted Emission Test

3.1. Test Standard and Limit

Test Standard	FCC Part15 Section 15.207		
	Frequency	Maximum RF Line Voltage (dBuV)	
		Quasi-peak Level	Average Level
Test Limit	150kHz~500kHz	66 ~ 56 *	56 ~ 46 *
	500kHz~5MHz	56	46
	5MHz~30MHz	60	50

Remark: (1) *Decreasing linearly with logarithm of the frequency.
(2) The lower limit shall apply at the transition frequency.

3.2. Test Setup



3.3. Test Procedure

The EUT system is connected to the power mains through a line impedance stabilization network (L.I.S.N.). This provides a 50ohm coupling impedance for the EUT system. Please refer the block diagram of the test setup and photographs. Both sides of AC line are checked to find out the maximum conducted emission. In order to find the maximum emission levels, the relative positions of equipment and all of the interface cables shall be changed according to FCC ANSI C63.10-2013 on Conducted Emission Measurement.

The bandwidth of test receiver (ESCI) set at 9kHz.

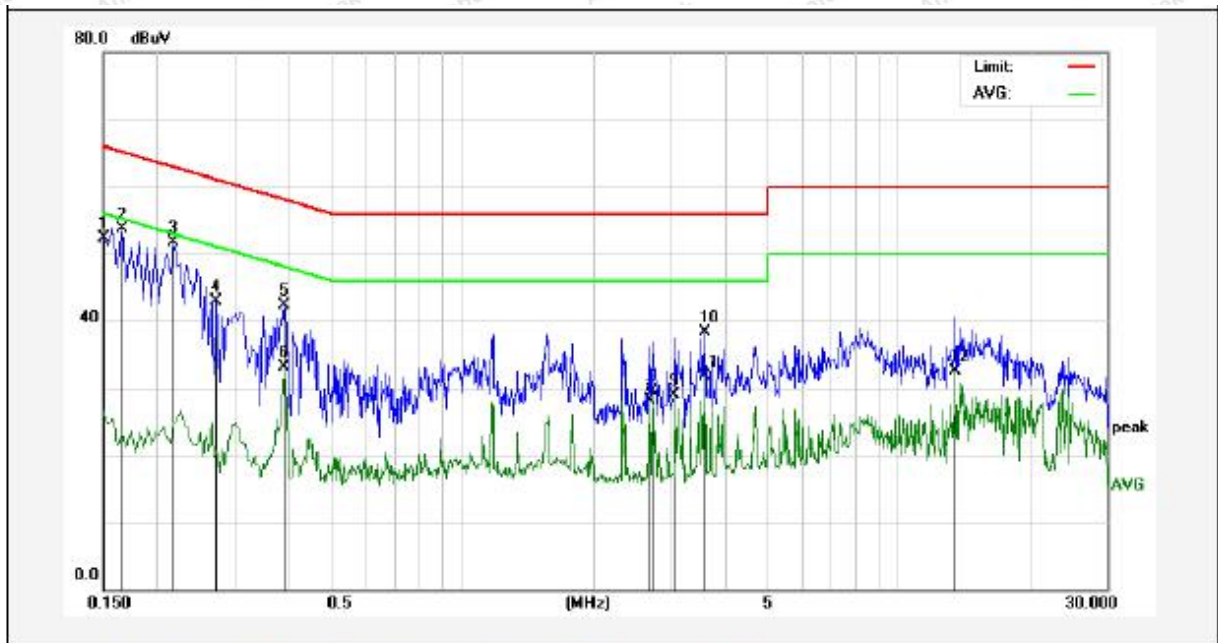
The frequency range from 150kHz to 30MHz is checked.

3.4. Test Data

Please to see the following pages

Conducted Emission Test Data

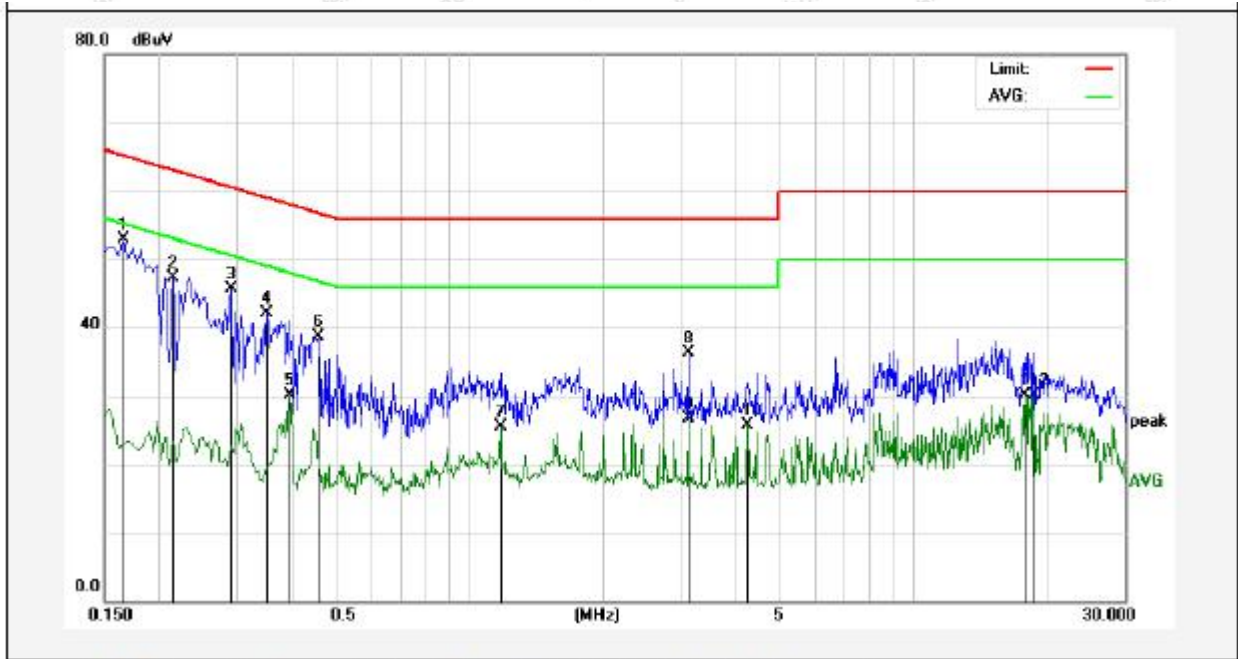
Test Site: 1# Shielded Room
 Operating Condition: Mode 1
 Test Specification: AC 120V, 60Hz for adapter
 Comment: Live Line
 Tem.: 24.4°C Hum.: 49%



No.	Freq. (MHz)	Reading (dBuV)	Factor (dB)	Result (dBuV)	Limit (dBuV)	Over Limit (dB)	Detector	Remark
1	0.1499	32.44	19.90	52.34	66.00	-13.66	QP	
2	0.1660	33.75	19.90	53.65	65.15	-11.50	QP	
3	0.2180	31.86	19.90	51.76	62.89	-11.13	QP	
4	0.2740	23.11	19.89	43.00	60.99	-17.99	QP	
5	0.3899	22.37	19.93	42.30	58.06	-15.76	QP	
6	0.3899	13.19	19.93	33.12	48.06	-14.94	AVG	
7	2.6820	8.01	20.15	28.16	46.00	-17.84	AVG	
8	2.7340	9.29	20.15	29.44	46.00	-16.56	AVG	
9	3.0660	8.79	20.16	28.95	46.00	-17.05	AVG	
10	3.5940	18.09	20.17	38.26	56.00	-17.74	QP	
11	3.5940	11.49	20.17	31.66	46.00	-14.34	AVG	
12	13.4819	12.13	20.28	32.41	50.00	-17.59	AVG	

Conducted Emission Test Data

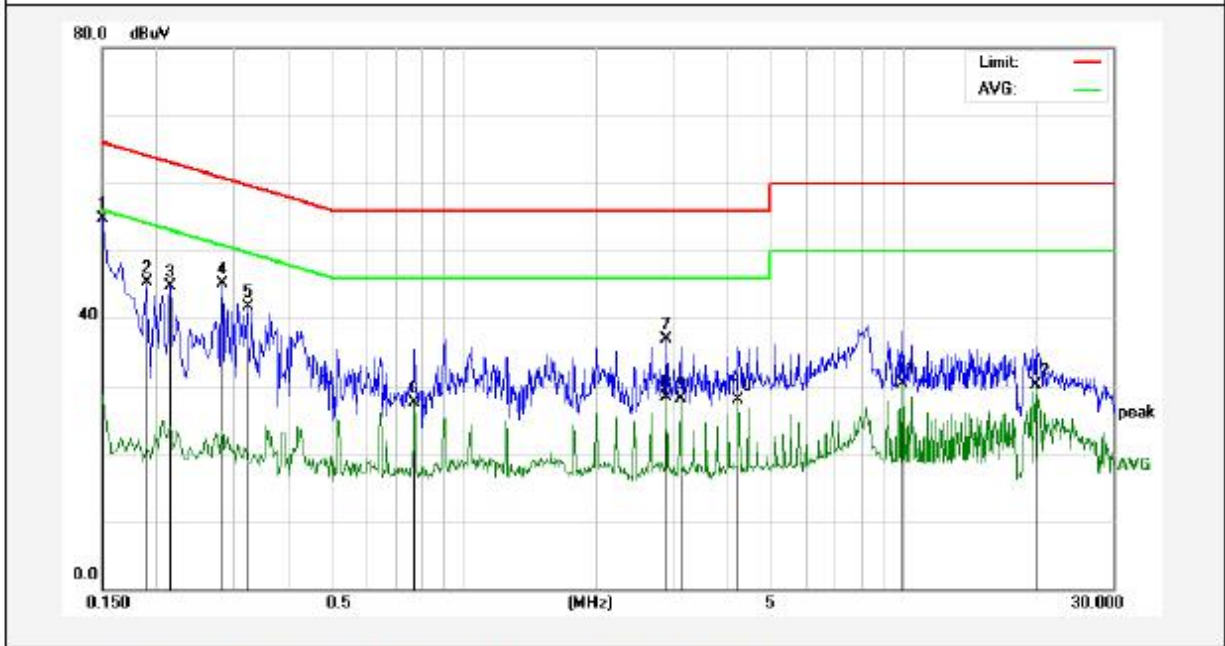
Test Site: 1# Shielded Room
 Operating Condition: Mode 1
 Test Specification: AC 120V, 60Hz for adapter
 Comment: Neutral Line
 Tem.: 24.4°C Hum.: 49%



No.	Freq. (MHz)	Reading (dBuV)	Factor (dB)	Result (dBuV)	Limit (dBuV)	Over Limit (dB)	Detector	Remark
1	0.1660	32.96	19.90	52.86	65.15	-12.29	QP	
2	0.2140	27.43	19.90	47.33	63.04	-15.71	QP	
3	0.2900	25.89	19.89	45.78	60.52	-14.74	QP	
4	0.3500	22.19	19.91	42.10	58.96	-16.86	QP	
5	0.3940	10.25	19.93	30.18	47.98	-17.80	AVG	
6	0.4580	18.66	19.96	38.62	56.73	-18.11	QP	
7	1.1740	5.31	20.12	25.43	46.00	-20.57	AVG	
8	3.1180	16.07	20.16	36.23	56.00	-19.77	QP	
9	3.1180	6.64	20.16	26.80	46.00	-19.20	AVG	
10	4.2300	5.54	20.19	25.73	46.00	-20.27	AVG	
11	17.8500	9.77	20.31	30.08	50.00	-19.92	AVG	
12	18.7380	9.77	20.32	30.09	50.00	-19.91	AVG	

Conducted Emission Test Data

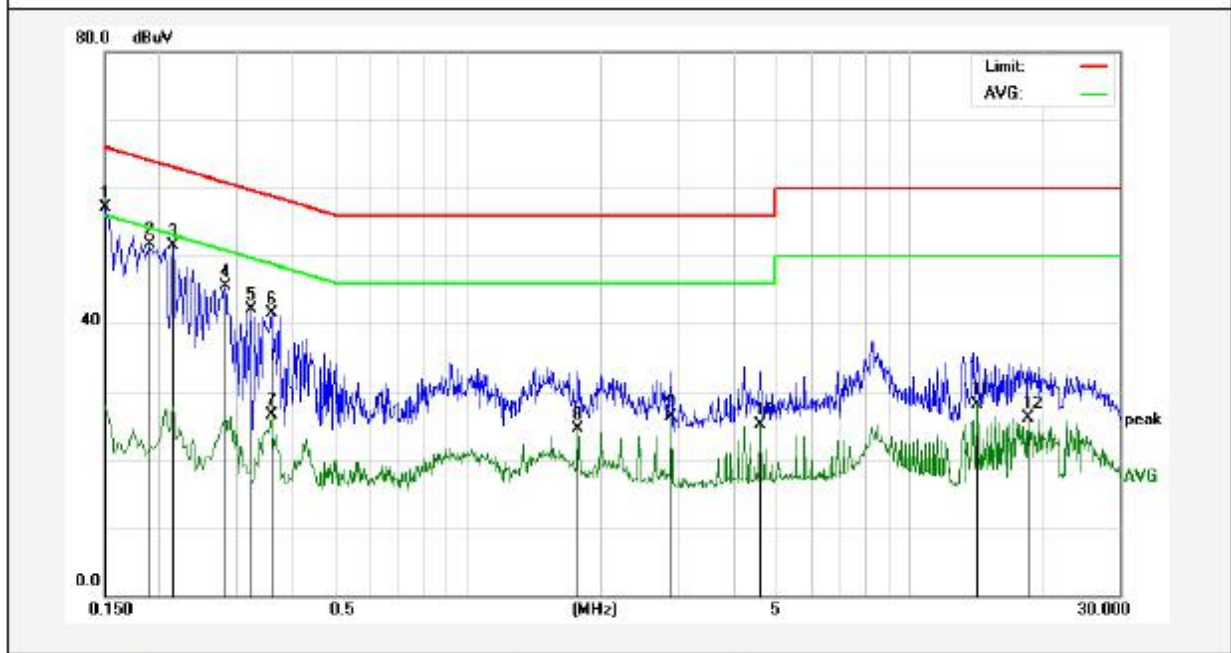
Test Site: 1# Shielded Room
 Operating Condition: Mode 1
 Test Specification: AC 240V, 60Hz for adapter
 Comment: Live Line
 Tem.: 24.4°C Hum.: 49%



No.	Freq. (MHz)	Reading (dBuV)	Factor (dB)	Result (dBuV)	Limit (dBuV)	Over Limit (dB)	Detector	Remark
1	0.1500	34.78	19.90	54.68	65.99	-11.31	QP	
2	0.1900	25.35	19.90	45.25	64.03	-18.78	QP	
3	0.2140	24.90	19.90	44.80	63.04	-18.24	QP	
4	0.2819	25.26	19.89	45.15	60.76	-15.61	QP	
5	0.3220	21.88	19.90	41.78	59.65	-17.87	QP	
6	0.7740	7.38	20.06	27.44	46.00	-18.56	AVG	
7	2.8900	16.84	20.16	37.00	56.00	-19.00	QP	
8	2.8900	8.17	20.16	28.33	46.00	-17.67	AVG	
9	3.1099	8.04	20.16	28.20	46.00	-17.80	AVG	
10	4.2220	7.69	20.19	27.88	46.00	-18.12	AVG	
11	9.9420	10.03	20.34	30.37	50.00	-19.63	AVG	
12	20.0020	9.83	20.34	30.17	50.00	-19.83	AVG	

Conducted Emission Test Data

Test Site: 1# Shielded Room
 Operating Condition: Mode 1
 Test Specification: AC 240V, 60Hz for adapter
 Comment: Neutral Line
 Tem.: 24.4°C Hum.: 49%



No.	Freq. (MHz)	Reading (dBuV)	Factor (dB)	Result (dBuV)	Limit (dBuV)	Over Limit (dB)	Detector	Remark
1	0.1500	37.16	19.90	57.06	65.99	-8.93	QP	
2	0.1900	31.75	19.90	51.65	64.03	-12.38	QP	
3	0.2140	31.61	19.90	51.51	63.04	-11.53	QP	
4	0.2819	25.59	19.89	45.48	60.76	-15.28	QP	
5	0.3220	22.21	19.90	42.11	59.65	-17.54	QP	
6	0.3580	21.68	19.92	41.60	58.77	-17.17	QP	
7	0.3580	6.66	19.92	26.58	48.77	-22.19	AVG	
8	1.7780	4.36	20.14	24.50	46.00	-21.50	AVG	
9	2.8900	6.05	20.16	26.21	46.00	-19.79	AVG	
10	4.6100	4.92	20.20	25.12	46.00	-20.88	AVG	
11	14.2180	7.93	20.27	28.20	50.00	-21.80	AVG	
12	18.6780	5.88	20.32	26.20	50.00	-23.80	AVG	

4. Radiation Spurious Emission and Band Edge

4.1. Test Standard and Limit

Test Standard	FCC Part15 C Section 15.209 and 15.205				
Test Limit	Frequency (MHz)	Field strength (microvolt/meter)	Limit (dBuV/m)	Remark	Measurement distance (m)
	0.009MHz~0.490MHz	2400/F(kHz)	-	-	300
	0.490MHz-1.705MHz	24000/F(kHz)	-	-	30
	1.705MHz-30MHz	30	-	-	30
	30MHz~88MHz	100	40.0	Quasi-peak	3
	88MHz~216MHz	150	43.5	Quasi-peak	3
	216MHz~960MHz	200	46.0	Quasi-peak	3
	960MHz~1000MHz	500	54.0	Quasi-peak	3
	Above 1000MHz	500	54.0	Average	3
		-	-	74.0	Peak

Remark:

- (1)The lower limit shall apply at the transition frequency.
- (2) 15.35(b), Unless otherwise specified, the limit on peak radio frequency emissions is 20dB above the maximum permitted average emission limit applicable to the equipment under test. This peak limit applies to the total peak emission level radiated by the device.

4.2. Test Setup

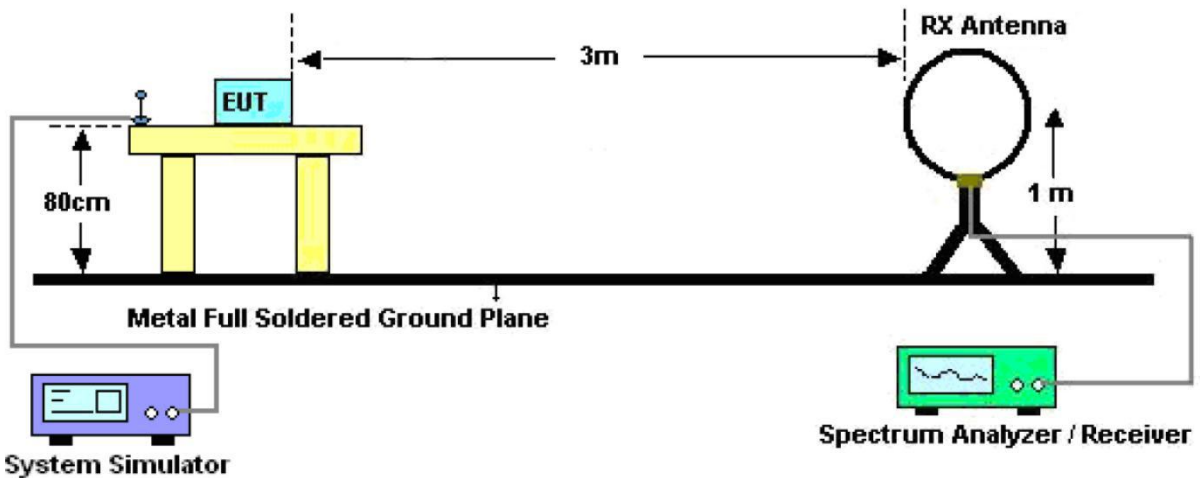


Figure 1. Below 30MHz

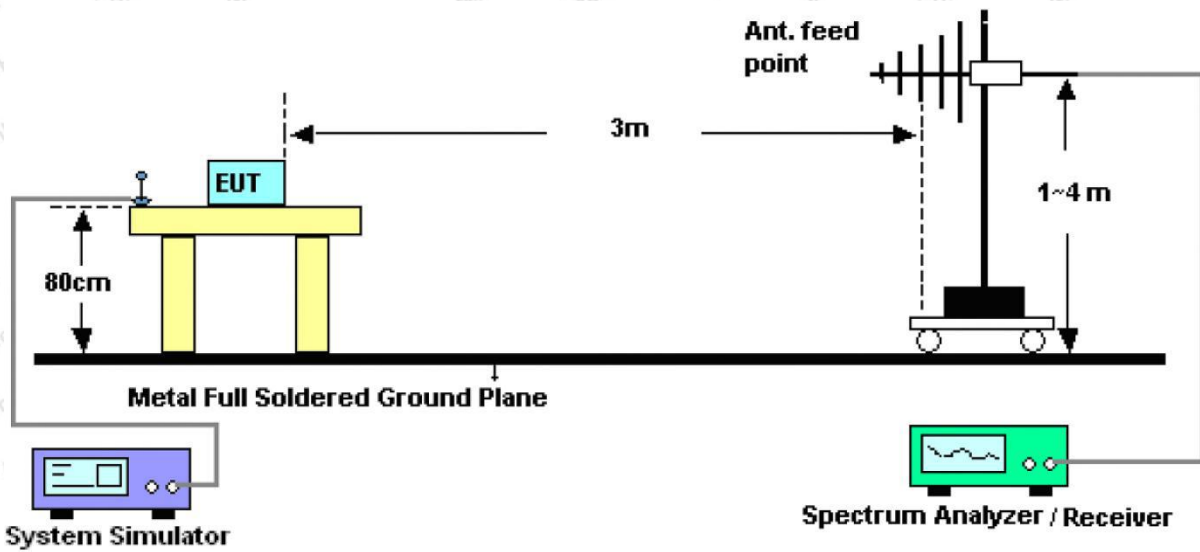


Figure 2. 30MHz to 1GHz

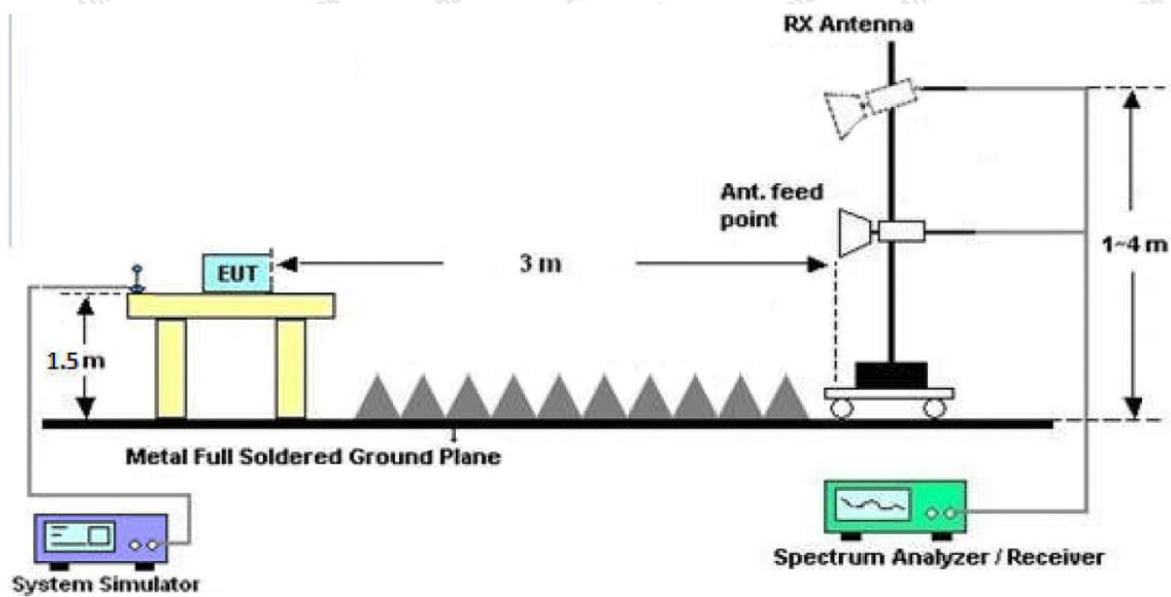


Figure 3. Above 1 GHz

4.3. Test Procedure

For below 1GHz: The EUT is placed on a turntable, which is 0.8m above the ground plane.

For above 1GHz: The EUT is placed on a turntable, which is 1.5m above the ground plane.

The turn table can rotate 360 degrees to determine the position of the maximum emission level. The EUT is set 3 meters away from the receiving antenna which is mounted on a antenna tower. The antenna can be moved up and down from 1 to 4 meters to find out the maximum emission level. Rotated the EUT through three orthogonal axes to determine the maximum emissions, both horizontal and vertical polarization of the antenna are set on test. The EUT is tested in 9*6*6 Chamber. The device is evaluated in xyz orientation.

For 9kHz to 150kHz, Set the spectrum analyzer as:

RBW = 200Hz, VBW = 1kHz, Detector= Quasi-Peak, Trace mode= Max hold, Sweep- auto couple.

For 150kHz to 30MHz, Set the spectrum analyzer as:

RBW = 9kHz, VBW = 30kHz, Detector= Quasi-Peak, Trace mode= Max hold, Sweep- auto couple.

For 30MHz to 1000MHz, Set the spectrum analyzer as:

RBW = 100kHz, VBW = 300kHz, Detector= Quasi-Peak, Trace mode= Max hold, Sweep- auto couple.

4.4. Test Data

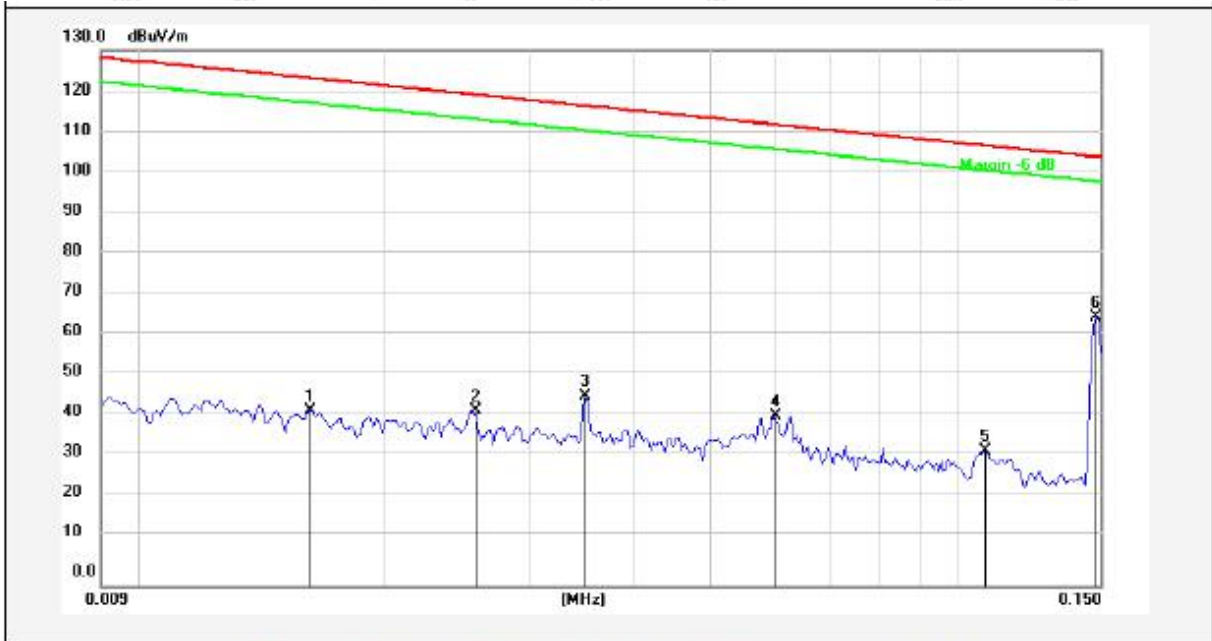
PASS

Note: The data is in TX mode, and this is the worst mode.



Test Results (9K~0.15MHz)

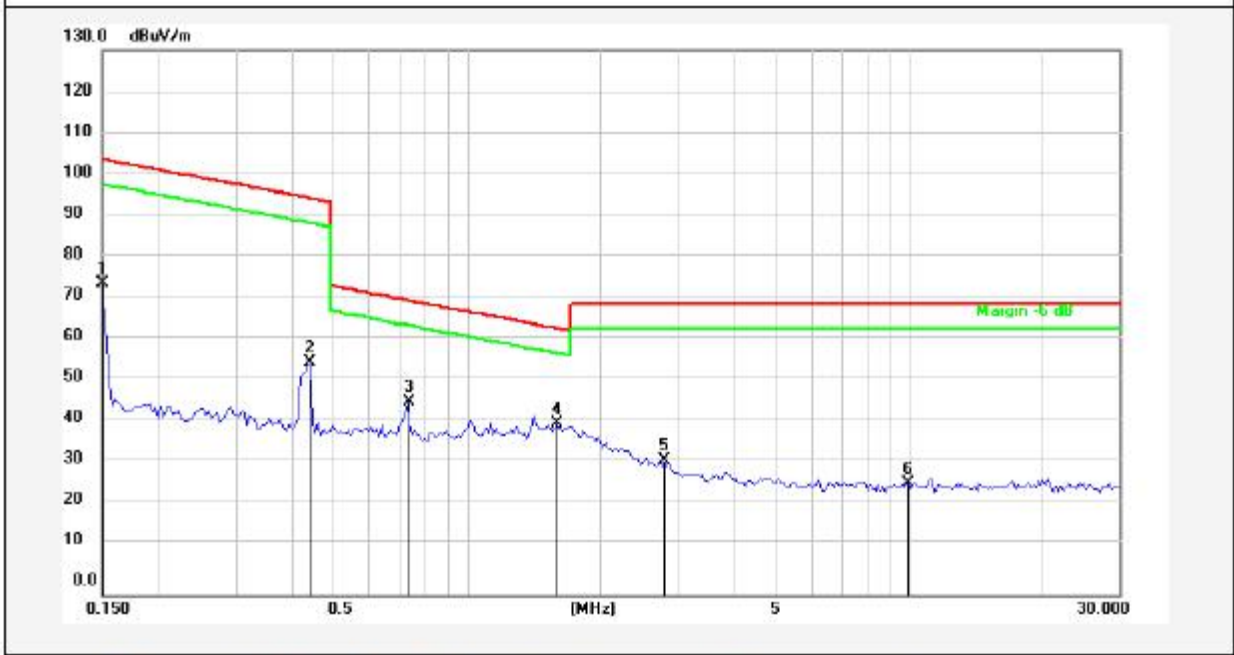
Test Mode: Mode 1
 Power Source: AC 120V, 60Hz for adapter
 Temp.(°C)/Hum.(%RH): 22.4°C/49%RH
 Distance: 3m



No.	Freq. (MHz)	Reading (dBUV)	Factor ()	Result (dBUV/m)	Limit (dBUV/m)	Over Limit (dB)	Detector	Height (cm)	degree (deg)	Remark
1	0.0162	22.21	20.27	42.48	123.23	-80.75	peak			
2	0.0257	22.15	20.39	42.54	119.25	-76.71	peak			
3	0.0352	25.46	20.48	45.94	116.53	-70.59	peak			
4	0.0597	20.71	20.37	41.08	111.97	-70.89	peak			
5	0.1085	12.28	20.28	32.56	106.81	-74.25	peak			
6	0.1479	44.86	20.33	65.19	104.14	-38.95	peak			

Test Results (0.15~30MHz)

Test Mode: Mode 1
 Power Source: AC 120V, 60Hz for adapter
 Temp.(°C)/Hum.(%RH): 22.4°C/49%RH
 Distance: 3m

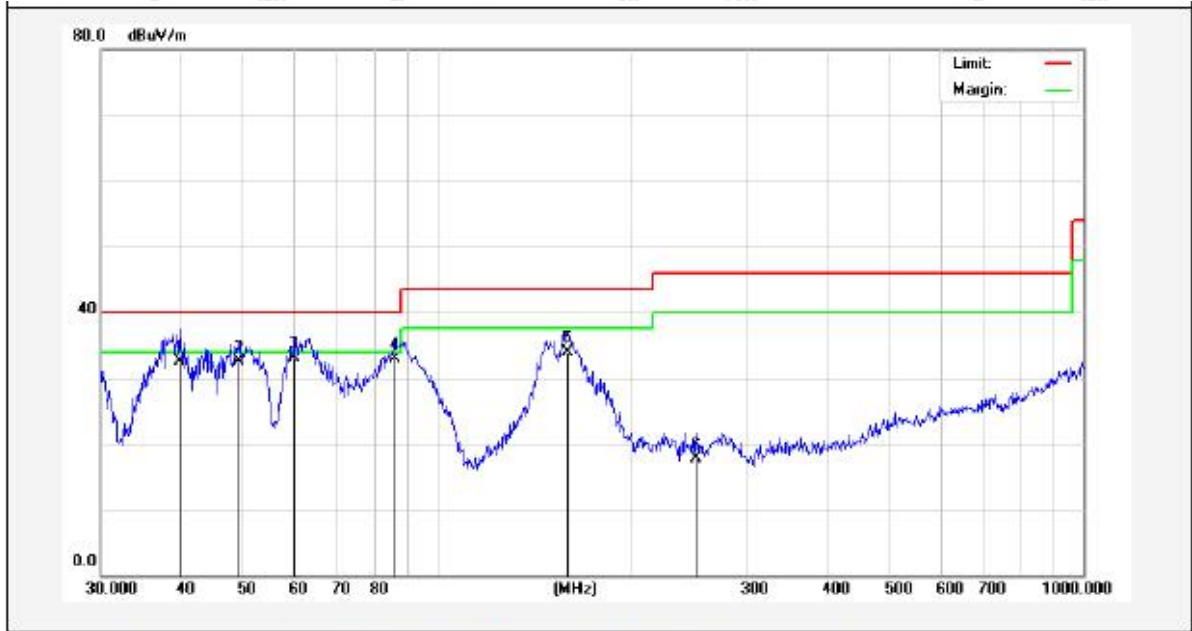


No.	Freq. (MHz)	Reading (dBuV)	Factor ()	Result (dBuV/m)	Limit (dBuV/m)	Over Limit (dB)	Detector	Height (cm)	degree (deg)	Remark
1	0.1500	53.78	20.33	74.11	104.02	-29.91	peak			
2	0.4386	35.08	20.27	55.35	94.76	-39.41	peak			
3	0.7352	25.67	20.25	45.92	70.29	-24.37	peak			
4	1.6062	20.51	20.26	40.77	63.52	-22.75	peak			
5	2.7648	11.71	20.30	32.01	69.50	-37.49	peak			
6	9.9921	6.13	20.51	26.64	69.50	-42.86	peak			

Remark: According to FCC PART 15.209 (d), the emission limits for the frequency bands 9–90 kHz, 110–490 kHz and above 1000 MHz, Radiated emission limits in these three bands are based on measurements employing an average detector.

Test Results (30~1000MHz)

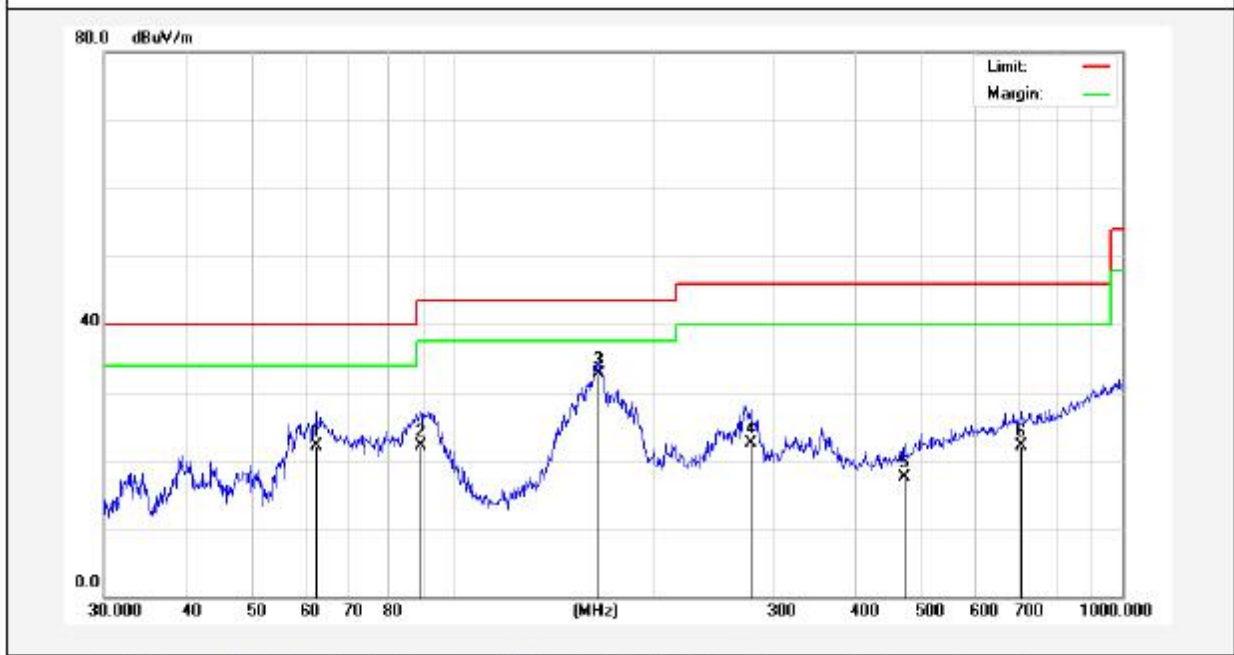
Test Mode: Mode 1
 Power Source: AC 120V, 60Hz for adapter
 Polarization: Vertical
 Temp.(°C)/Hum.(%RH): 24.8°C/53%RH
 Distance: 3m



No.	Freq. (MHz)	Reading (dBuV)	Factor (dB/m)	Result (dBuV/m)	Limit (dBuV/m)	Over Limit (dB)	Detector	Height (cm)	degree (deg)	Remark
1	39.7146	46.25	-13.74	32.51	40.00	-7.49	QP	100	0	
2	49.1865	47.22	-14.73	32.49	40.00	-7.51	QP	100	360	
3	59.8588	49.29	-16.22	33.07	40.00	-6.93	QP	100	360	
4	85.5977	49.51	-16.70	32.81	40.00	-7.19	QP	100	0	
5	158.6677	53.43	-19.48	33.95	43.50	-9.55	QP	100	360	
6	251.1804	32.95	-15.23	17.72	46.00	-28.28	QP	100	0	

Test Results (30~1000MHz)

Test Mode: Mode 1
 Power Source: AC 120V, 60Hz for adapter
 Polarization: Horizontal
 Temp.(°C)/Hum.(%RH): 24.8°C/53%RH
 Distance: 3m



No.	Freq. (MHz)	Reading (dBUV)	Factor (dB/m)	Result (dBUV/m)	Limit (dBUV/m)	Over Limit (dB)	Detector	Height (cm)	degree (deg)	Remark
1	62.4314	39.15	-17.07	22.08	40.00	-17.92	QP	100	0	
2	89.2764	42.64	-20.60	22.04	43.50	-21.46	QP	100	360	
3	164.9075	54.26	-21.55	32.71	43.50	-10.79	QP	100	0	
4	278.0668	38.75	-16.29	22.46	46.00	-23.54	QP	100	360	
5	472.1760	28.76	-11.18	17.58	46.00	-28.42	QP	100	0	
6	706.6999	28.08	-5.90	22.18	46.00	-23.82	QP	100	360	

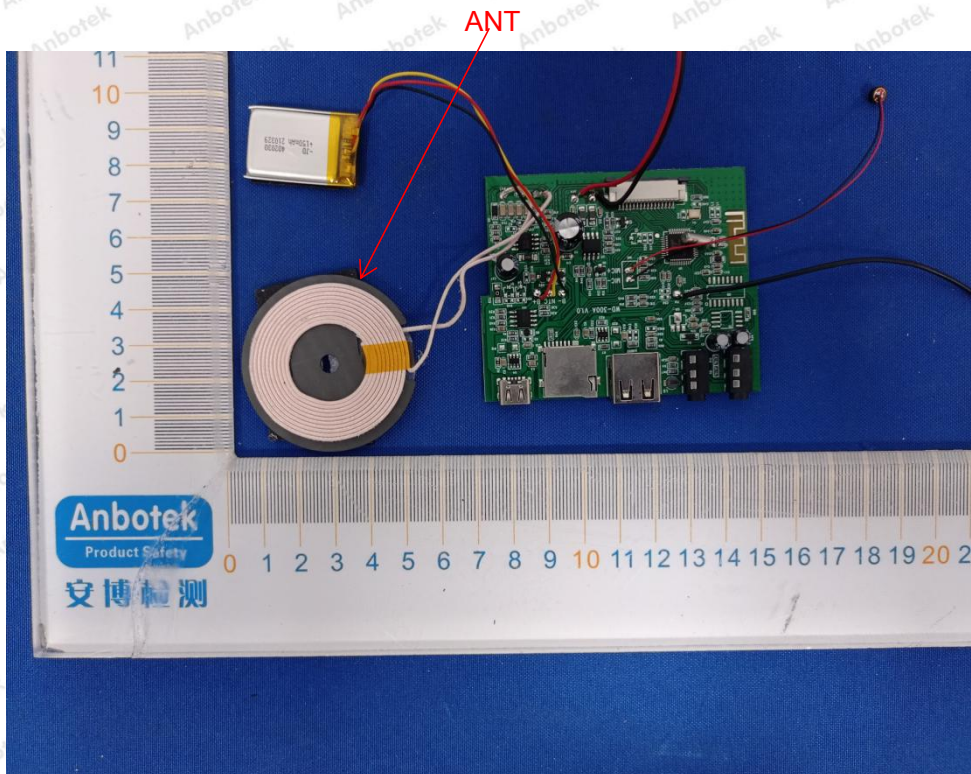
5. Antenna Requirement

5.1. Test Standard and Requirement

Test Standard	FCC Part15 Section 15.203
Requirement	An intentional radiator shall be designed to ensure that no antenna other than that furnished by the responsible party shall be used with the device. The use of a permanently attached antenna or of an antenna that uses a unique coupling to the intentional radiator, the manufacturer may design the unit so that a broken antenna can be replaced by the user, but the use of a standard antenna jack or electrical connector is prohibited.

5.2. Antenna Connected Construction

The antenna is a Inductive loop coil Antenna which permanently attached, and the best case gain of the antenna is 0 dBi. It complies with the standard requirement.



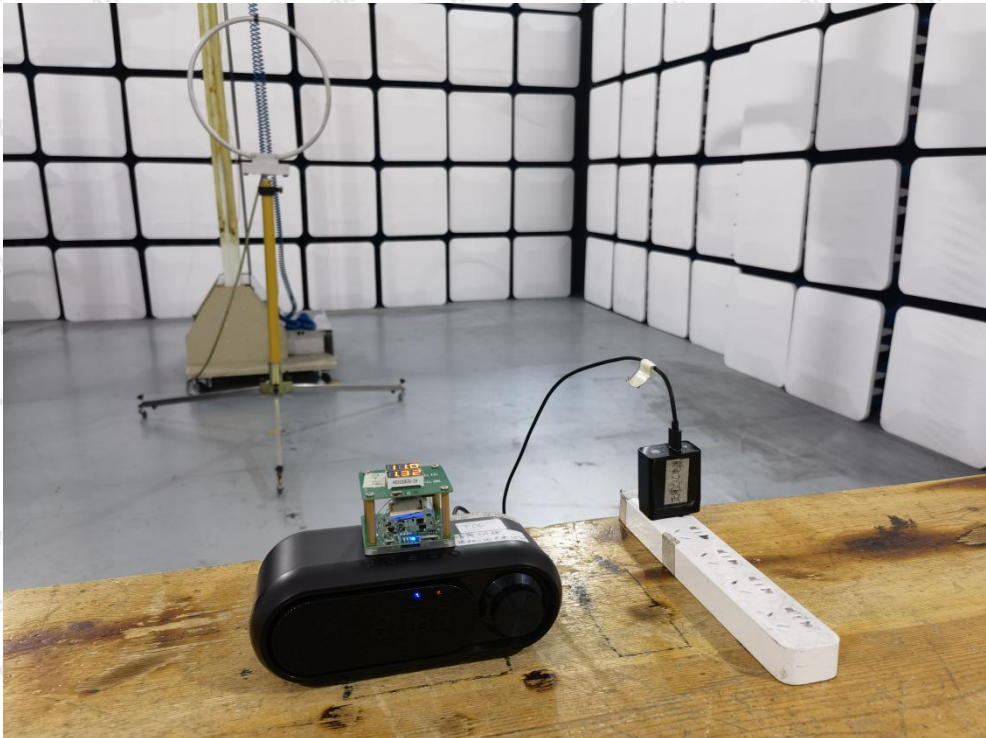
APPENDIX I -- TEST SETUP PHOTOGRAPH

Photo of Conducted Emission Measurement



Photo of Radiation Emission Test





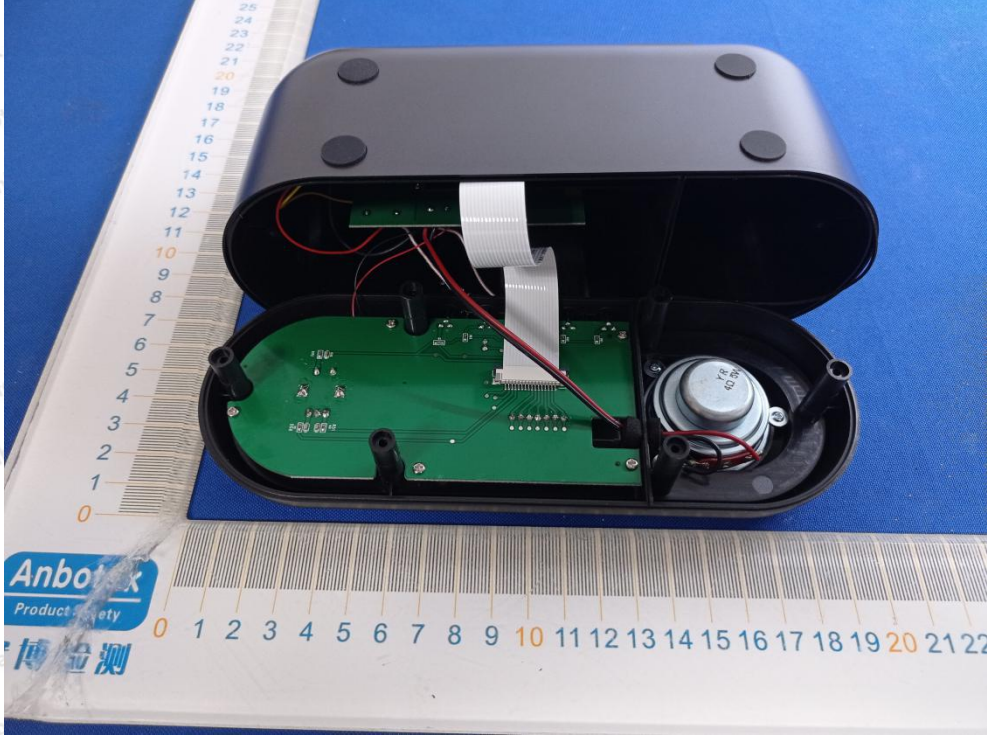
APPENDIX II -- EXTERNAL PHOTOGRAPH

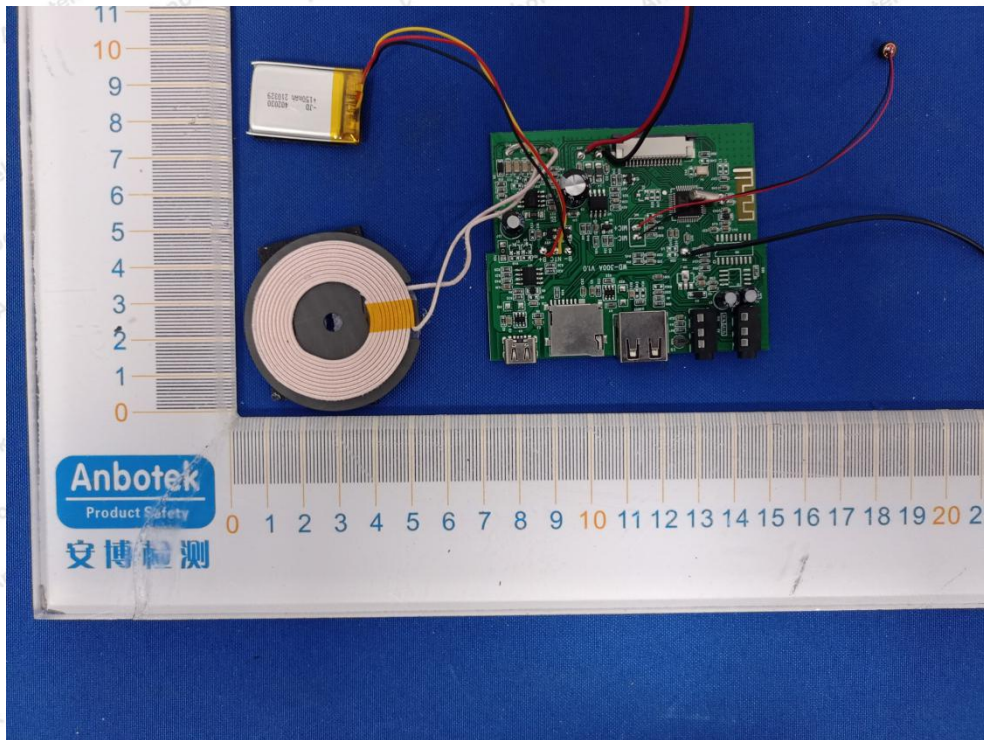
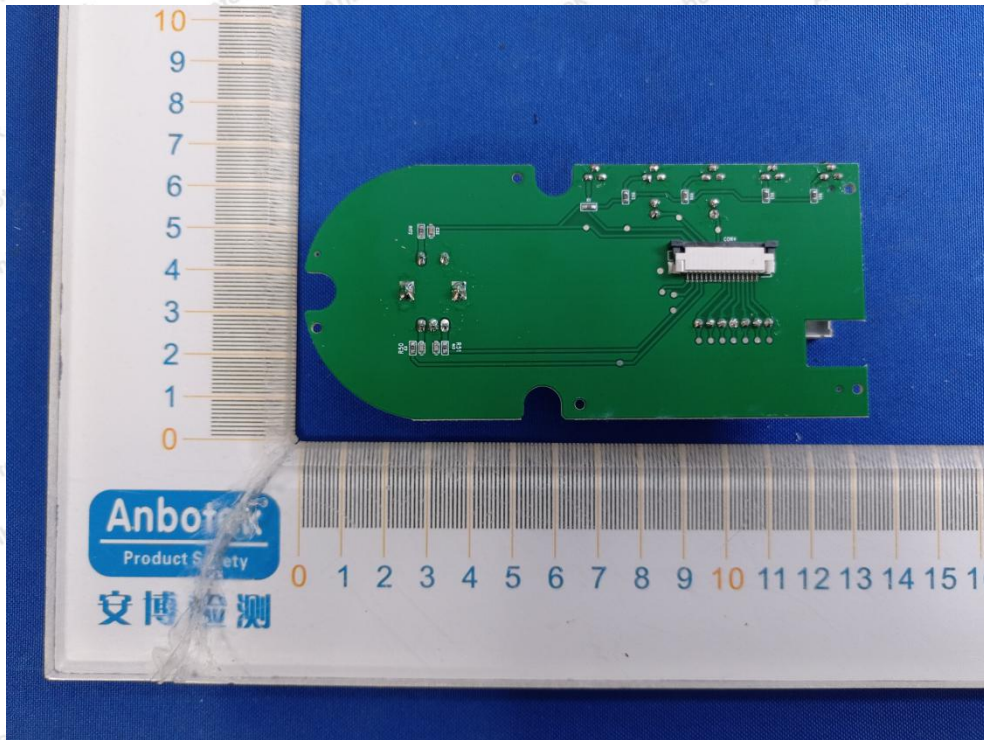


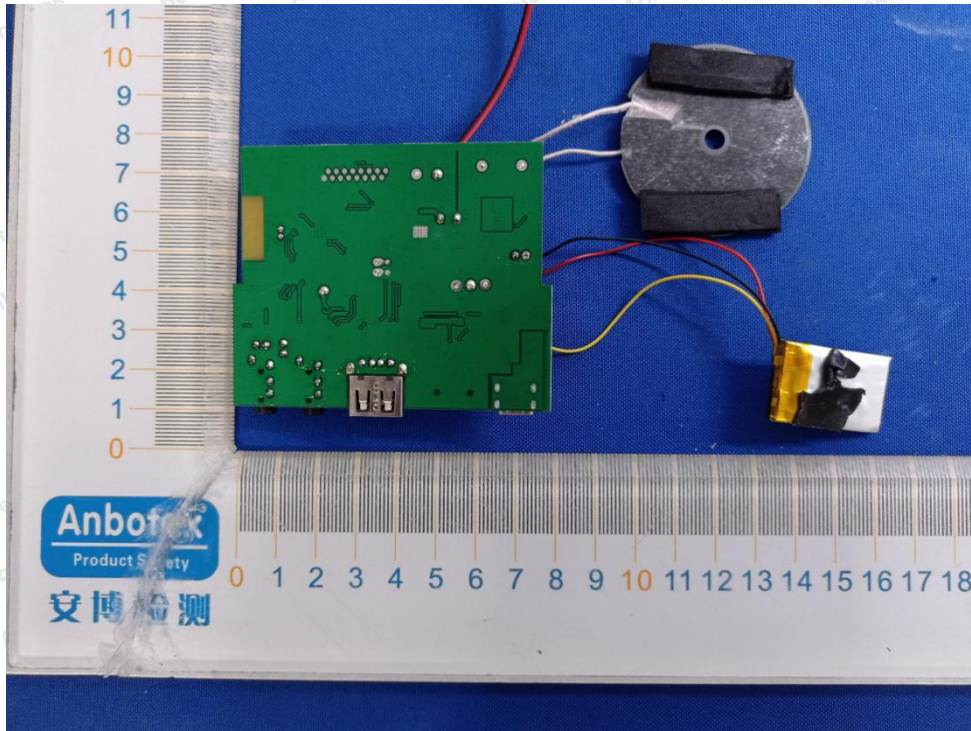




APPENDIX III -- INTERNAL PHOTOGRAPH







----- End of Report -----