

---

# FCC Test Report

---

Report No.: AGC00184190603FE03

**FCC ID** : 2ASQI-62814  
**APPLICATION PURPOSE** : Original Equipment  
**PRODUCT DESIGNATION** : Remote Ground Swat Grey Camo  
**BRAND NAME** : Primos  
**MODEL NAME** : 62814  
**APPLICANT** : Bushnell Holdings Inc.  
**DATE OF ISSUE** : Sep. 29, 2019  
**STANDARD(S)** : FCC Part 15.247  
**REPORT VERSION** : V1.0

## Attestation of Global Compliance (Shenzhen) Co., Ltd

**CAUTION:**

This report shall not be reproduced except in full without the written permission of the test laboratory and shall not be quoted out of context.



**REPORT REVISE RECORD**

Report Version	Revise Time	Issued Date	Valid Version	Notes
V1.0	/	Sep. 29, 2019	Valid	Initial Release



**TABLE OF CONTENTS**

**1. VERIFICATION OF COMPLIANCE ..... 4**

**2. GENERAL INFORMATION ..... 5**

    2.1 PRODUCT DESCRIPTION ..... 5

    2.2. TABLE OF CARRIER FREQUENCIES ..... 5

    2.3 RELATED SUBMITTAL(S)/GRANT(S) ..... 6

    2.4 TEST METHODOLOGY ..... 6

    2.5 SPECIAL ACCESSORIES ..... 6

    2.6 EQUIPMENT MODIFICATIONS ..... 6

**3. MEASUREMENT UNCERTAINTY ..... 7**

**4. DESCRIPTION OF TEST MODES ..... 8**

**5. SYSTEM TEST CONFIGURATION ..... 9**

    5.1 CONFIGURATION OF TESTED SYSTEM ..... 9

    5.2 EQUIPMENT USED IN TESTED SYSTEM ..... 9

    5.3. SUMMARY OF TEST RESULTS ..... 9

**6. TEST FACILITY ..... 10**

**7. PEAK OUTPUT POWER ..... 11**

    7.1. MEASUREMENT PROCEDURE ..... 11

    7.2. TEST SET-UP (BLOCK DIAGRAM OF CONFIGURATION) ..... 11

    7.3. LIMITS AND MEASUREMENT RESULT ..... 12

**8. 6 DB BANDWIDTH ..... 13**

    8.1. MEASUREMENT PROCEDURE ..... 13

    8.2. TEST SET-UP (BLOCK DIAGRAM OF CONFIGURATION) ..... 13

    8.3. LIMITS AND MEASUREMENT RESULTS ..... 13

**9. CONDUCTED SPURIOUS EMISSION ..... 14**

    9.1. MEASUREMENT PROCEDURE ..... 14

    9.2. TEST SET-UP (BLOCK DIAGRAM OF CONFIGURATION) ..... 14

    9.3. MEASUREMENT EQUIPMENT USED ..... 14

    9.4. LIMITS AND MEASUREMENT RESULT ..... 14

**10. MAXIMUM CONDUCTED OUTPUT POWER SPECTRAL DENSITY ..... 17**

    10.1 MEASUREMENT PROCEDURE ..... 17

    10.2 TEST SET-UP (BLOCK DIAGRAM OF CONFIGURATION) ..... 17

    10.3 MEASUREMENT EQUIPMENT USED ..... 17

    10.4 LIMITS AND MEASUREMENT RESULT ..... 17

**11. RADIATED EMISSION ..... 18**

    11.1. MEASUREMENT PROCEDURE ..... 18

    11.2. TEST SETUP ..... 19

    11.3. LIMITS AND MEASUREMENT RESULT ..... 20

    11.4. TEST RESULT ..... 20

**APPENDIX A: PHOTOGRAPHS OF TEST SETUP ..... 24**

**APPENDIX B: PHOTOGRAPHS OF EUT ..... 25**



### 1. VERIFICATION OF COMPLIANCE

<b>Applicant</b>	Bushnell Holdings Inc.
<b>Address</b>	9200 Cody, Overland Park, KS 66214 USA
<b>Manufacturer</b>	Wata Electronics Co., Ltd.
<b>Address</b>	No 142, South Tanshen Road, Tanzhou Town, Zhongshan City, Guangdong, China
<b>Factory</b>	Wata Electronics Co., Ltd.
<b>Address</b>	No 142, South Tanshen Road, Tanzhou Town, Zhongshan City, Guangdong, China
<b>Product Designation</b>	Remote Ground Swat Grey Camo
<b>Brand Name</b>	Primos
<b>Test Model</b>	62814
<b>Date of test</b>	Sep. 16, 2019 to Sep. 27, 2019
<b>Deviation</b>	None
<b>Condition of Test Sample</b>	Normal
<b>Test Result</b>	Pass
<b>Report Template</b>	AGCRT-US-BLE/RF

We hereby certify that:

The above equipment was tested by Attestation of Global Compliance (Shenzhen) Co., Ltd. The test data, data evaluation, test procedures, and equipment configurations shown in this report were made in accordance with the procedures given in ANSI C63.10 (2013) and the energy emitted by the sample EUT tested as described in this report is in compliance with radiated emission limits of FCC part 15.247.

Prepared By

*Nini*

Nini Guo  
(Project Engineer)

Sep. 27, 2019

Reviewed By

*Max Zhang*

Max Zhang  
(Reviewer)

Sep. 29, 2019

Approved By

*Forrest Lei*

Forrest Lei  
(Authorized Officer)

Sep. 29, 2019



## 2.GENERAL INFORMATION

### 2.1PRODUCT DESCRIPTION

The EUT is designed as a “Remote Ground Swat Grey Camo”. It is designed by way of utilizing the GFSK technology to achieve the system operation.

A major technical description of EUT is described as following

<b>Operation Frequency</b>	915MHz
<b>RF Output Power</b>	10.671dBm(Average)
<b>Modulation</b>	GFSK
<b>Number of channels</b>	1 Channel
<b>Antenna Designation</b>	Integral Antenna(Comply with requirements of the FCC part 15.203)
<b>Antenna Gain</b>	1dBi
<b>Hardware Version</b>	V2.4
<b>Software Version</b>	V1.0
<b>Power Supply</b>	DC 4.5V by battery

### 2.2. TABLE OF CARRIER FREQUENCIES

Frequency Band	Frequency
902-928MHz	915MHz



**2.3 RELATED SUBMITTAL(S)/GRANT(S)**

This submittal(s) (test report) is intended for FCC ID: 2ASQI-62814 filing to comply with the FCC Part 15.247 requirements.

**2.4 TEST METHODOLOGY**

Both conducted and radiated testing was performed according to the procedures in ANSI C63.10 (2013). Radiated testing was performed at an antenna to EUT distance 3 meters.

**2.5 SPECIAL ACCESSORIES**

Refer to section 2.2.

**2.6 EQUIPMENT MODIFICATIONS**

Not available for this EUT intended for grant.



### 3. MEASUREMENT UNCERTAINTY

The reported uncertainty of measurement  $y \pm U$ , where expanded uncertainty  $U$  is based on a standard uncertainty multiplied by a coverage factor of  $k=2$ , providing a level of confidence of approximately 95%.

- Uncertainty of Conducted Emission,  $U_c = \pm 3.2$  dB
- Uncertainty of Radiated Emission below 1GHz,  $U_c = \pm 3.9$  dB
- Uncertainty of Radiated Emission above 1GHz,  $U_c = \pm 4.8$  dB
- Uncertainty of total RF power, conducted,  $U_c = \pm 0.8$  dB
- Uncertainty of RF power density, conducted,  $U_c = \pm 2.6$  dB
- Uncertainty of spurious emissions, conducted,  $U_c = \pm 2.7$  dB
- Uncertainty of Occupied Channel Bandwidth:  $U_c = \pm 2$  %



#### 4. DESCRIPTION OF TEST MODES

NO.	TEST MODE DESCRIPTION
1	Transmitting mode

Note:

1. Only the result of the worst case was recorded in the report, if no other cases.
2. For Radiated Emission, 3axis were chosen for testing for each applicable mode.
3. For Conducted Test method, a temporary antenna connector is provided by the manufacture.





## 5. SYSTEM TEST CONFIGURATION

### 5.1 CONFIGURATION OF TESTED SYSTEM



### 5.2 EQUIPMENT USED IN TESTED SYSTEM

Item	Equipment	Model No.	ID or Specification	Remark
1	Remote Ground Swat Grey Camo	62814	2ASQI-62814	EUT

### 5.3. SUMMARY OF TEST RESULTS

FCC RULES	DESCRIPTION OF TEST	RESULT
15.247 (b)(3)	Peak Output Power	Compliant
15.247 (a)(2)	6 dB Bandwidth	Compliant
15.247 (d)	Conducted Spurious Emission	Compliant
15.247 (e)	Maximum Conducted Output Power Density	Compliant
15.209	Radiated Emission	Compliant
15.207	Conducted Emission	N/A

Note: The conducted limits are not required for devices which only employ battery power for operation.



## 6. TEST FACILITY

<b>Test Site</b>	Attestation of Global Compliance (Shenzhen) Co., Ltd
<b>Location</b>	1-2/F, Building 19, Junfeng Industrial Park, Chongqing Road, Heping Community, Fuhai Street, Bao'an District, Shenzhen, Guangdong, China
<b>Designation Number</b>	CN1259
<b>FCC Test Firm Registration Number</b>	975832
<b>A2LA Cert. No.</b>	5054.02
<b>Description</b>	Attestation of Global Compliance(Shenzhen) Co., Ltd is accredited by A2LA

### TEST EQUIPMENT OF CONDUCTED EMISSION TEST

Equipment	Manufacturer	Model	S/N	Cal. Date	Cal. Due
TEST RECEIVER	R&S	ESPI	101206	Jun. 10, 2019	Jun. 09, 2020
LISN	R&S	ESH2-Z5	100086	Aug. 26, 2019	Aug. 25, 2020

### TEST EQUIPMENT OF RADIATED EMISSION TEST

Equipment	Manufacturer	Model	S/N	Cal. Date	Cal. Due
TEST RECEIVER	R&S	ESCI	10096	Jun. 12, 2019	Jun. 11, 2020
EXA Signal Analyzer	Aglient	N9010A	MY53470504	Dec. 20, 2018	Dec. 19, 2019
915MHz Fliter	EM Electronics	902-928MHz	N/A	Feb. 27, 2019	Feb. 26, 2020
Power sensor	Aglient	U2021XA	MY54110007	Sep. 09, 2019	Sep. 08, 2020
Attenuator	ZHINAN	E-002	N/A	Aug. 26, 2019	Aug. 25, 2019
Horn antenna	SCHWARZBECK	BBHA 9170	#768	Sep. 21, 2017	Sep. 20, 2020
Active loop antenna (9K-30MHz)	ZHINAN	ZN30900C	18051	Jun. 14, 2018	Jun. 13, 2020
Double-Ridged Waveguide Horn	ETS LINDGREN	3117	00034609	May. 26, 2018	May. 25, 2020
Broadband Preamplifier	ETS LINDGREN	3117PA	00225134	Oct. 25, 2018	Oct. 24, 2019
ANTENNA	SCHWARZBECK	VULB9168	D69250	Sep. 28, 2017	Sep. 27, 2019

## 7. PEAK OUTPUT POWER

### 7.1. MEASUREMENT PROCEDURE

For peak power test:

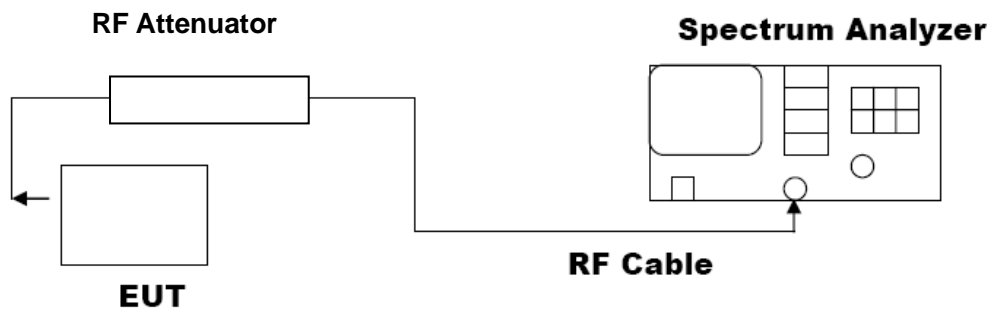
1. Connect EUT RF output port to the Spectrum Analyzer through an RF attenuator
2.  $RBW \geq DTS$  bandwidth
3.  $VBW \geq 3 * RBW$ .
4.  $SPAN \geq VBW$ .
5. Sweep: Auto.
6. Detector function: Peak.
7. Trace: Max hold.

Allow trace to stabilize. Use the marker-to-peak function to set the marker to the peak of the emission. The indicated level is the peak output power, after any corrections for external attenuators and cables.

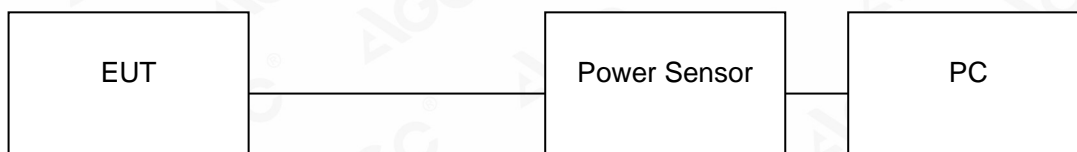
For average power test:

Connect EUT RF output port to the average power sensor.

### 7.2. TEST SET-UP (BLOCK DIAGRAM OF CONFIGURATION) PEAK POWER TEST SETUP

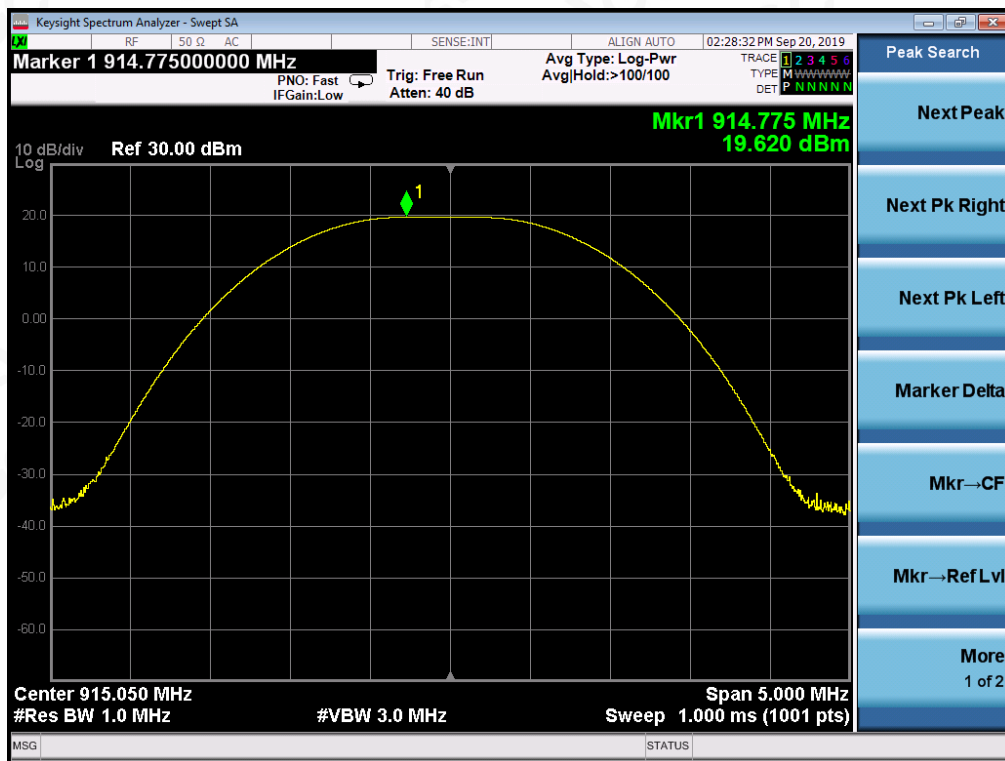


### AVERAGE POWER SETUP



### 7.3. LIMITS AND MEASUREMENT RESULT

PEAK OUTPUT POWER MEASUREMENT RESULT FOR GFSK MODULATION				
Frequency (GHz)	Peak Power (dBm)	Average power (dBm)	Applicable Limits (dBm)	Pass or Fail
0.915	19.620	10.671	30	Pass



Attestation of Global Compliance

Attestation of Global Compliance(Shenzhen)Co.,Ltd.

Add: 2/F., Building 2, Sanwei Chaxi Industrial Park, Sanwei Community, Hangcheng Street, Bao'an District, Shenzhen, Guangdong, China

Tel: +86-755 2523 4088

E-mail: agc@agc-cert.com

Service Hotline: 400 089 2118

## 8. 6 DB BANDWIDTH

### 8.1. MEASUREMENT PROCEDURE

1. Connect EUT RF output port to the Spectrum Analyzer through an RF attenuator
2. Set the EUT Work on the top, the middle and the bottom operation frequency individually.
3. Set SPA Centre Frequency = Operation Frequency, RBW= 100 KHz, VBW $\geq$ 3 $\times$ RBW.
4. Set SPA Trace 1 Max hold, then View.

**Note:** The EUT was tested according to ANSI C63.10 for compliance to FCC PART 15.247 requirements.

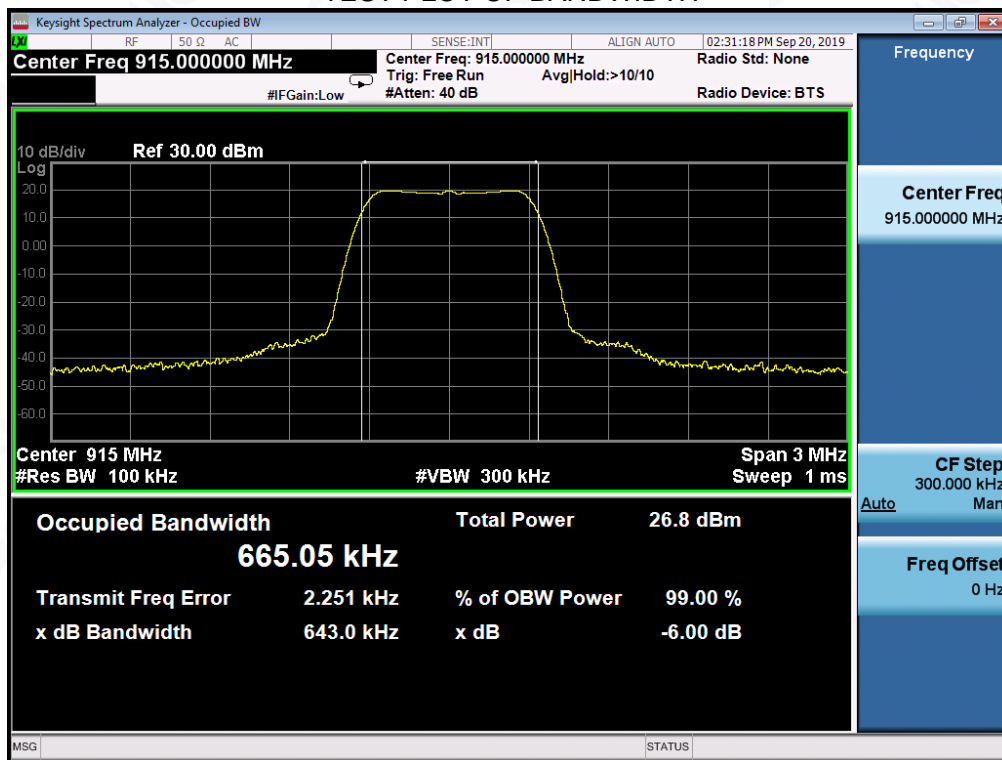
### 8.2. TEST SET-UP (BLOCK DIAGRAM OF CONFIGURATION)

The same as described in section 7.2.

### 8.3. LIMITS AND MEASUREMENT RESULTS

LIMITS AND MEASUREMENT RESULT			
Applicable Limits	Applicable Limits		
	Test Data (kHz)		Criteria
>500KHZ	operate Channel	643.0	PASS

TEST PLOT OF BANDWIDTH



## 9. CONDUCTED SPURIOUS EMISSION

### 9.1. MEASUREMENT PROCEDURE

1. Connect EUT RF output port to the Spectrum Analyzer through an RF attenuator
2. Set the EUT Work on the top, the middle and the bottom operation frequency individually.
3. Set SPA Trace 1 Max hold, then View.

**Note:** The EUT was tested according to ANSI C63.10 for compliance to FCC PART 15.247 requirements.

### 9.2. TEST SET-UP (BLOCK DIAGRAM OF CONFIGURATION)

The same as described in section 7.2.

### 9.3. MEASUREMENT EQUIPMENT USED

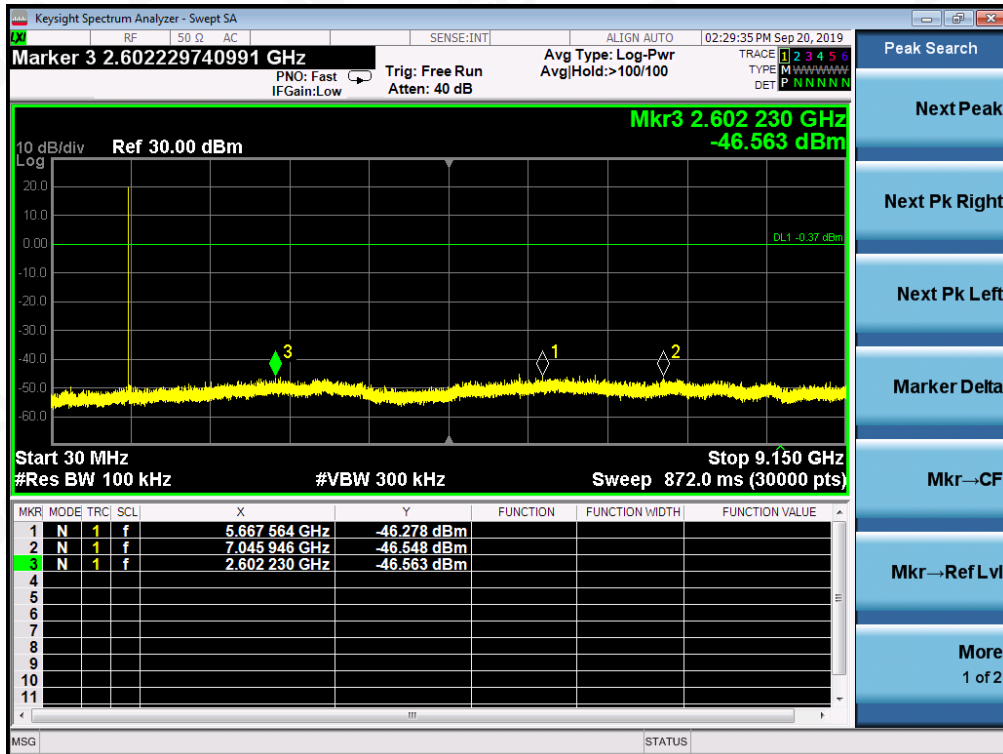
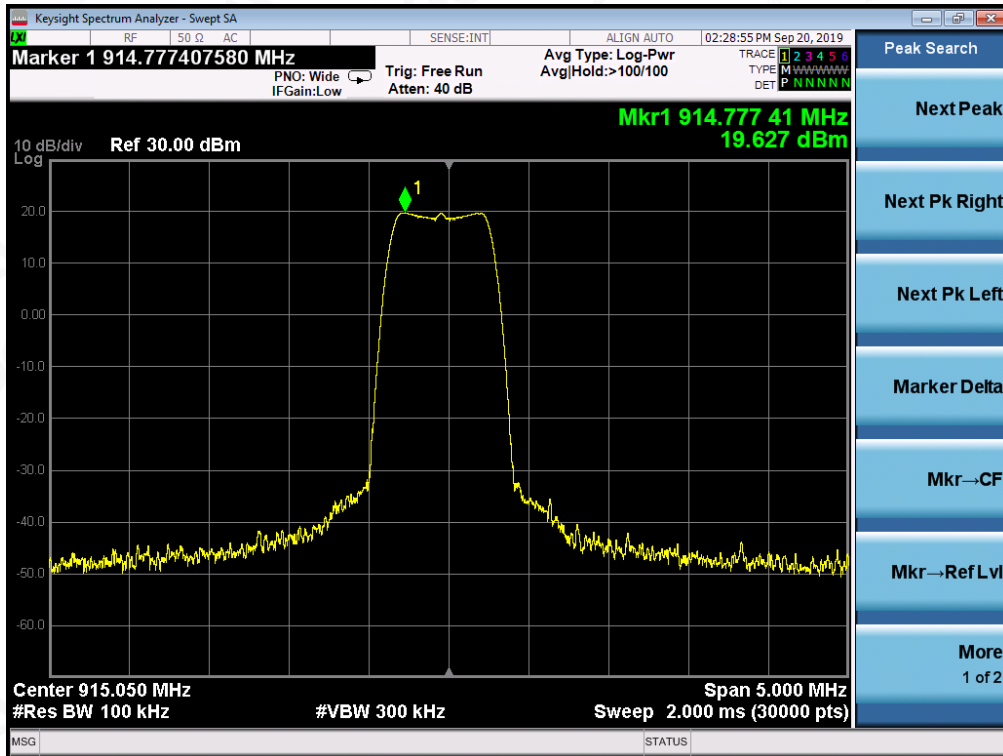
The same as described in section 6.

### 9.4. LIMITS AND MEASUREMENT RESULT

LIMITS AND MEASUREMENT RESULT		
Applicable Limits	Measurement Result	
	Test Data	Criteria
In any 100 KHz Bandwidth Outside the frequency band in which the spread spectrum intentional radiator is operating, the radio frequency power that is produce by the intentional radiator shall be at least 20 dB below that in 100KHz bandwidth within the band that contains the highest level of the desired power.	At least -20dBc than the reference level	PASS PASS



TEST RESULT FOR ENTIRE FREQUENCY RANGE



Note: The peak emissions without marker on the above plots are fundamental wave and need not to compare with the limit.



Attestation of Global Compliance

Attestation of Global Compliance(Shenzhen)Co.,Ltd.

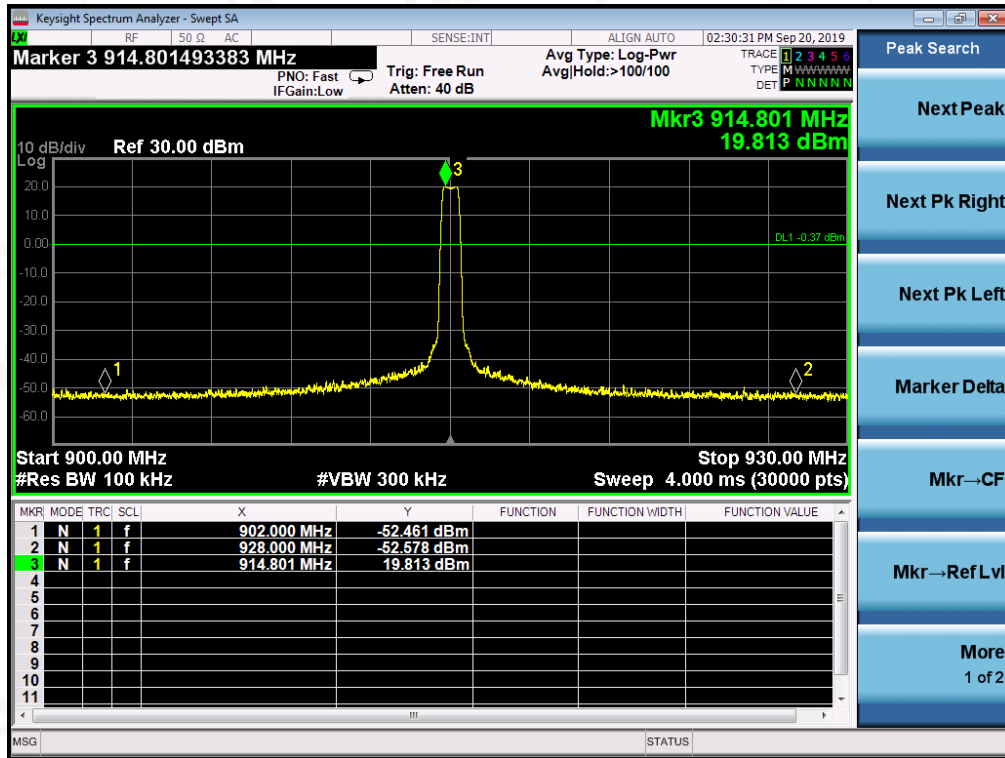
Add: 2/F., Building 2, Sanwei Chaxi Industrial Park, Sanwei Community,  
Hangcheng Street, Bao'an District, Shenzhen, Guangdong, China

Tel: +86-755 2523 4088

E-mail: agc@agc-cert.com

Service Hotline:400 089 2118

### TEST RESULT FOR BAND EDGE





## 10. MAXIMUM CONDUCTED OUTPUT POWER SPECTRAL DENSITY

### 10.1 MEASUREMENT PROCEDURE

- (1). Connect EUT RF output port to the Spectrum Analyzer through an RF attenuator
- (2). Set the EUT Work on the top, the middle and the bottom operation frequency individually.
- (3). Set SPA Trace 1 Max hold, then View.

Note: The method of PKPSD in the KDB 558074 item 10.2 was used in this testing.

### 10.2 TEST SET-UP (BLOCK DIAGRAM OF CONFIGURATION)

Refer To Section 7.2.

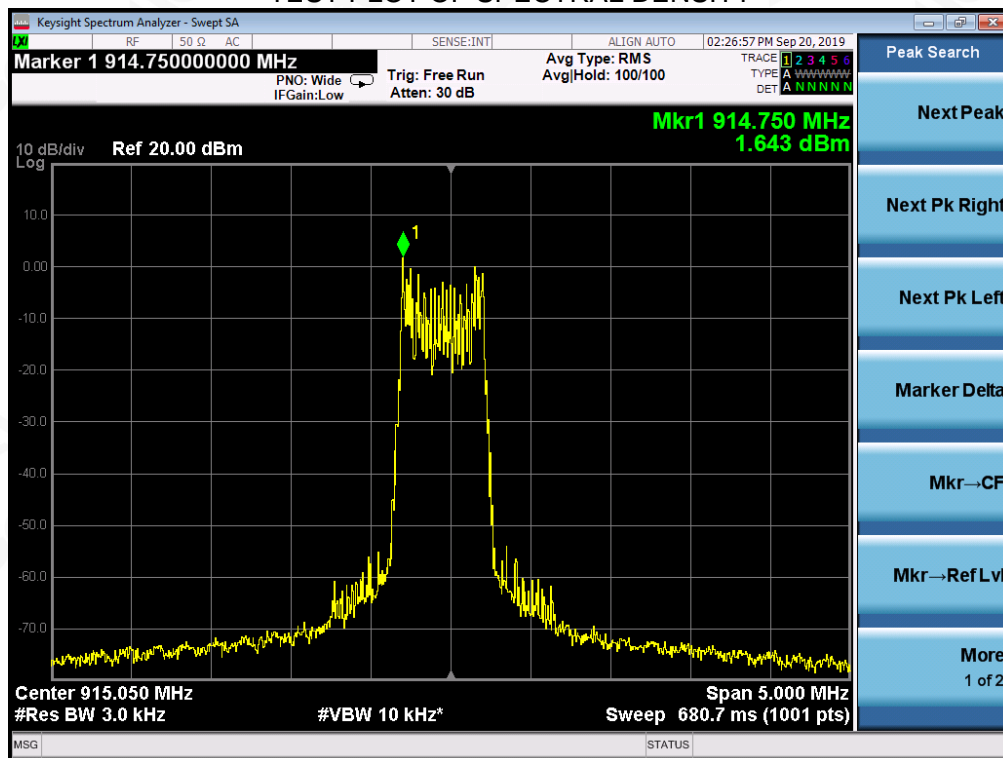
### 10.3 MEASUREMENT EQUIPMENT USED

Refer To Section 6.

### 10.4 LIMITS AND MEASUREMENT RESULT

Channel No.	PSD (dBm/3kHz)	Limit (dBm/3kHz)	Result
operate Channel	1.643	8	Pass

TEST PLOT OF SPECTRAL DENSITY



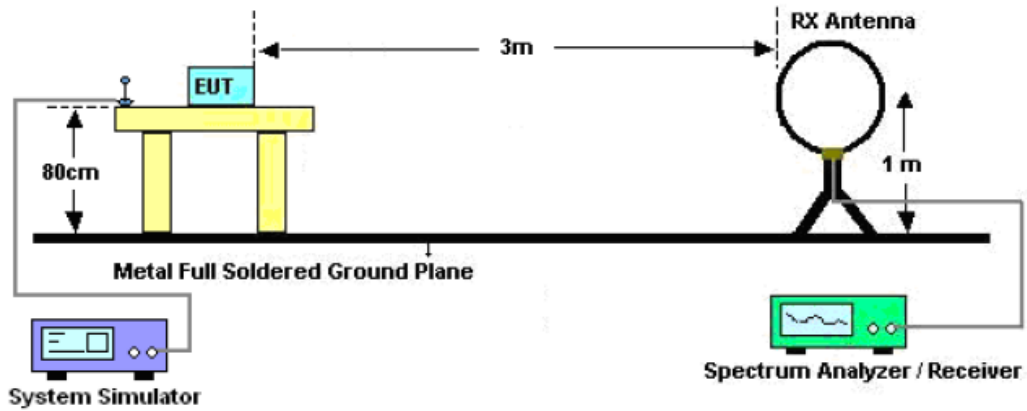
## 11. RADIATED EMISSION

### 11.1. MEASUREMENT PROCEDURE

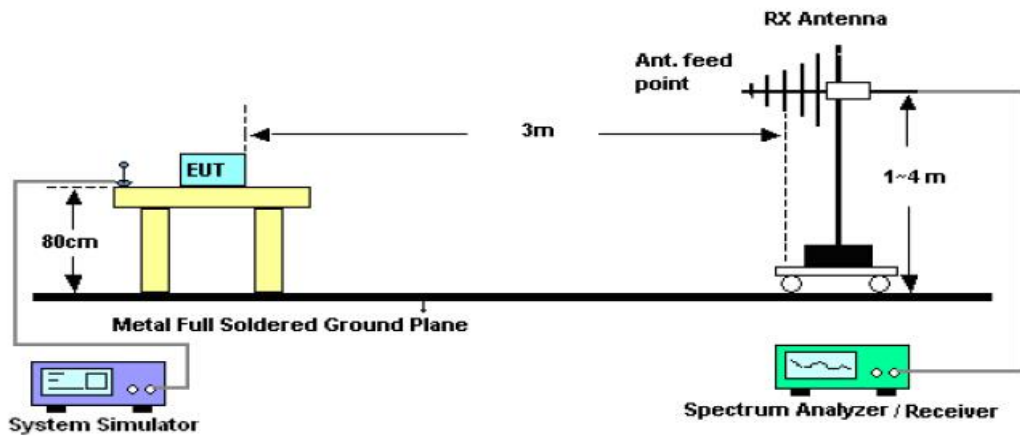
1. The EUT was placed on the top of the turntable 0.8 or 1.5 meter above ground. The phase center of the receiving antenna mounted on the top of a height-variable antenna tower was placed 3 meters far away from the turntable.
2. Power on the EUT and all the supporting units. The turntable was rotated by 360 degrees to determine the position of the highest radiation.
3. The height of the broadband receiving antenna was varied between one meter and four meters above ground to find the maximum emissions field strength of both horizontal and vertical polarization.
4. For each suspected emissions, the antenna tower was scan (from 1 M to 4 M) and then the turntable was rotated (from 0 degree to 360 degrees) to find the maximum reading.
5. Set the test-receiver system to Peak or CISPR quasi-peak Detect Function with specified bandwidth under Maximum Hold Mode.
6. For emissions above 1GHz, use 1MHz RBW and 3MHz VBW for peak reading. Place the measurement antenna away from each area of the EUT determined to be a source of emissions at the specified measurement distance, while keeping the measurement antenna aimed at the source of emissions at each frequency of significant emissions, with polarization oriented for maximum response. The measurement antenna may have to be higher or lower than the EUT, depending on the radiation pattern of the emission and staying aimed at the emission source for receiving the maximum signal. The final measurement antenna elevation shall be that which maximizes the emissions. The measurement antenna elevation for maximum emissions shall be restricted to a range of heights of from 1 m to 4 m above the ground or reference ground plane.
7. When the radiated emissions limits are expressed in terms of the average value of the emissions, and pulsed operation is employed, the measurement field strength shall be determined by averaging over one complete pulse train, including blanking intervals, as long as the pulse train does not exceed 0.1 seconds. As an alternative (provided the transmitter operates for longer than 0.1 seconds) or in cases where the pulse train exceeds 0.1 seconds, the measured field strength shall be determined from the average absolute voltage during a 0.1 second interval during which the field strength is at its maximum values.
8. If the emissions level of the EUT in peak mode was 3 dB lower than the average limit specified, then testing will be stopped and peak values of EUT will be reported, otherwise, the emissions which do not have 3 dB margin will be repeated one by one using the quasi-peak method for below 1GHz.
9. For testing above 1GHz, the emissions level of the EUT in peak mode was lower than average limit (that means the emissions level in peak mode also complies with the limit in average mode), then testing will be stopped and peak values of EUT will be reported, otherwise, the emissions will be measured in average mode again and reported.
10. In case the emission is lower than 30MHz, loop antenna has to be used for measurement and the recorded data should be QP measured by receiver. High - Low scan is not required in this case.

### 11.2. TEST SETUP

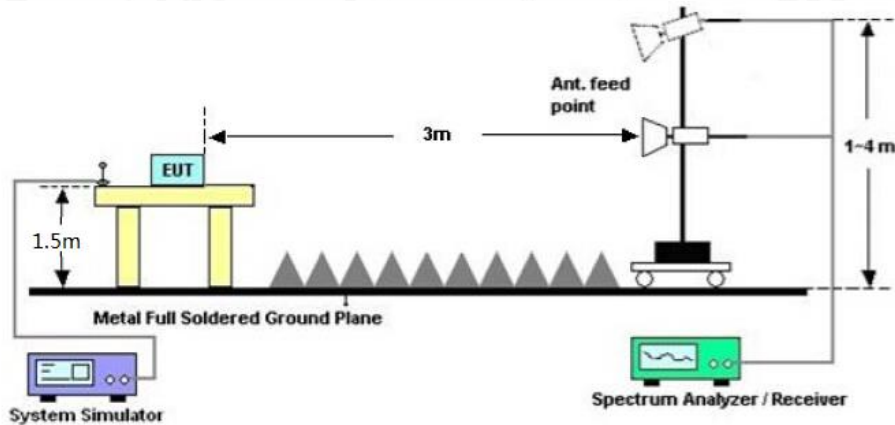
Radiated Emission Test-Setup Frequency Below 30MHz



RADIATED EMISSION TEST SETUP 30MHz-1000MHz



RADIATED EMISSION TEST SETUP ABOVE 1000MHz



**11.3. LIMITS AND MEASUREMENT RESULT**

15.209 Limit in the below table has to be followed

<b>Frequencies (MHz)</b>	<b>Field Strength (micorvolts/meter)</b>	<b>Measurement Distance (meters)</b>
0.009~0.490	2400/F(KHz)	300
0.490~1.705	24000/F(KHz)	30
1.705~30.0	30	30
30~88	100	3
88~216	150	3
216~960	200	3
Above 960	500	3

Note: All modes were tested For restricted band radiated emission, the test records reported below are the worst result compared to other modes.

**11.4. TEST RESULT**

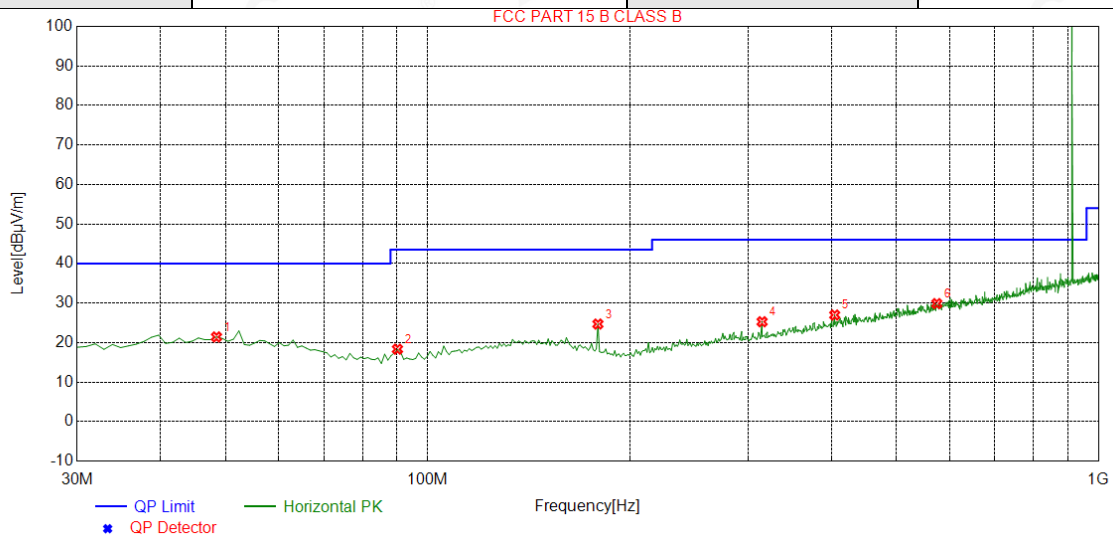
**RADIATED EMISSION BELOW 30MHZ**

No emission found between lowest internal used/generated frequencies to 30MHz.



**RADIATED EMISSION BELOW 1GHZ**

<b>EUT</b>	Remote Ground Swat Grey Camo	<b>Model Name</b>	62814
<b>Temperature</b>	25° C	<b>Relative Humidity</b>	55.4%
<b>Pressure</b>	960hPa	<b>Test Voltage</b>	Normal Voltage
<b>Test Mode</b>	Mode 1	<b>Antenna</b>	Horizontal



NO.	Freq. [MHz]	Level [dBµV/m]	Factor [dB]	Limit [dBµV/m]	Margin [dB]	Height [cm]	Angle [°]	Polarity
1	48.4300	21.42	14.71	40.00	18.58	200	36	Horizontal
2	90.1400	18.32	10.29	43.50	25.18	200	330	Horizontal
3	179.3800	24.68	13.06	43.50	18.82	200	88	Horizontal
4	315.1800	25.26	16.48	46.00	20.74	200	359	Horizontal
5	404.4200	26.97	19.93	46.00	19.03	200	107	Horizontal
6	574.1700	29.86	23.77	46.00	16.14	100	174	Horizontal

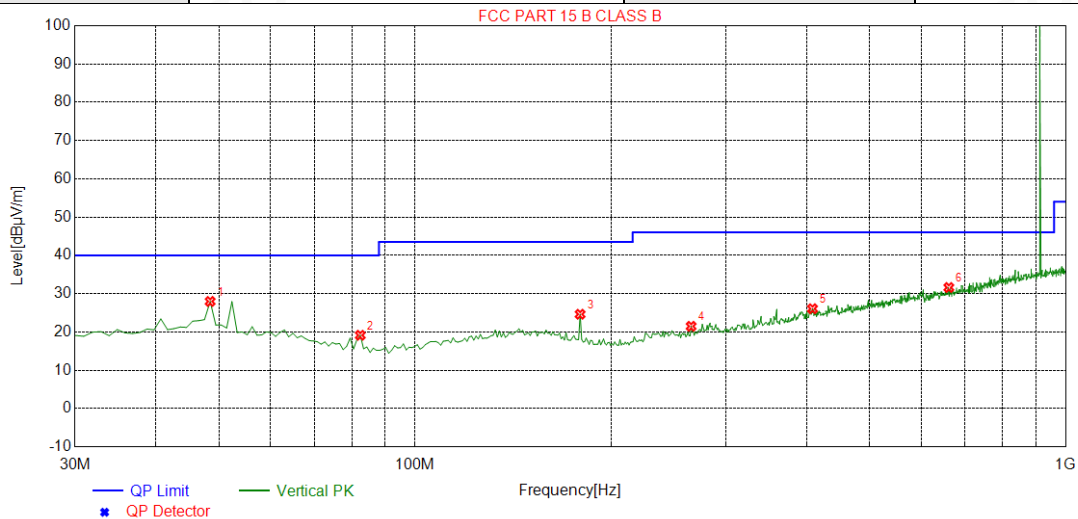
**RESULT: PASS**



Attestation of Global Compliance

Attestation of Global Compliance(Shenzhen)Co.,Ltd.  
 Add: 2/F., Building 2, Sanwei Chaxi Industrial Park, Sanwei Community,  
 Hangcheng Street, Bao'an District, Shenzhen, Guangdong, China  
 Tel: +86-755 2523 4088 E-mail: agc@agc-cert.com Service Hotline:400 089 2118

EUT	Remote Ground Swat Grey Camo	Model Name	62814
Temperature	25° C	Relative Humidity	55.4%
Pressure	960hPa	Test Voltage	Normal Voltage
Test Mode	Mode 1	Antenna	Vertical



NO.	Freq. [MHz]	Level [dBµV/m]	Factor [dB]	Limit [dBµV/m]	Margin [dB]	Height [cm]	Angle [°]	Polarity
1	48.4300	27.96	14.71	40.00	12.04	100	115	Vertical
2	82.3800	19.13	10.17	40.00	20.87	100	115	Vertical
3	179.3800	24.62	13.06	43.50	18.88	100	291	Vertical
4	265.7100	21.47	15.04	46.00	24.53	100	226	Vertical
5	408.3000	26.06	19.99	46.00	19.94	100	359	Vertical
6	661.4700	31.61	25.32	46.00	14.39	100	278	Vertical

**RESULT: PASS**

**Note:**

1. Factor=Antenna Factor + Cable loss, Margin=Measurement-Limit.
2. The emission above the limit is the fundamental wave, and there is a filter used for it .



**RADIATED EMISSION ABOVE 1GHZ**

<b>EUT</b>	Remote Ground Swat Grey Camo	<b>Model Name</b>	62814
<b>Temperature</b>	25° C	<b>Relative Humidity</b>	55.4%
<b>Pressure</b>	960hPa	<b>Test Voltage</b>	Normal Voltage
<b>Test Mode</b>	Mode 1	<b>Antenna</b>	Horizontal

Frequency (MHz)	Meter Reading (dBµV)	Factor (dB)	Emission Level (dBµV/m)	Limits (dBµV/m)	Margin (dB)	Value Type
1830.014	50.85	-1.25	49.60	74.00	-24.40	peak
1830.014	48.41	-1.25	47.16	54.00	-6.84	AVG
2745.026	42.69	0.13	42.82	74.00	-31.18	peak
2745.026	39.22	0.13	39.35	54.00	-14.65	AVG

Remark:

Factor = Antenna Factor + Cable Loss – Pre-amplifier.

<b>EUT</b>	Remote Ground Swat Grey Camo	<b>Model Name</b>	62814
<b>Temperature</b>	25° C	<b>Relative Humidity</b>	55.4%
<b>Pressure</b>	960hPa	<b>Test Voltage</b>	Normal Voltage
<b>Test Mode</b>	Mode 1	<b>Antenna</b>	Vertical

Frequency (MHz)	Meter Reading (dBµV)	Factor (dB)	Emission Level (dBµV/m)	Limits (dBµV/m)	Margin (dB)	Value Type
1830.014	50.85	-1.25	49.60	74.00	-24.40	peak
1830.014	46.61	-1.25	45.36	54.00	-8.64	AVG
2745.026	44.36	0.13	44.49	74.00	-29.51	peak
2745.026	42.74	0.13	42.87	54.00	-11.13	AVG

Remark:

Factor = Antenna Factor + Cable Loss – Pre-amplifier.

**Note:**

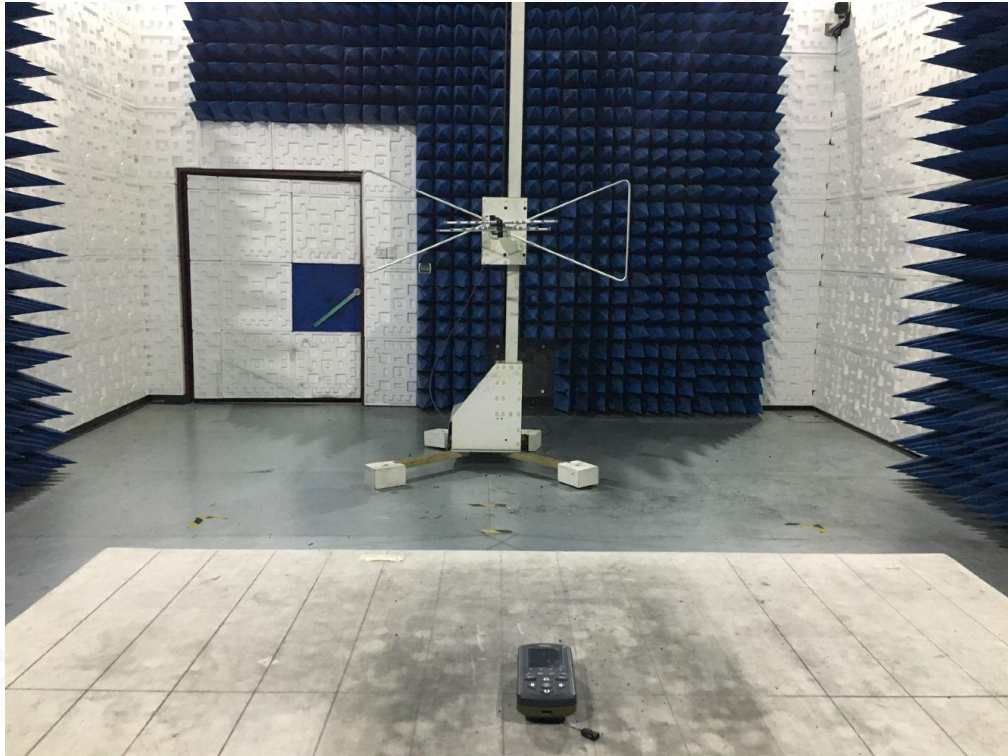
Other emissions from 1G to 9.2GHz are considered as ambient noise. No recording in the test report.

Factor = Antenna Factor + Cable loss - Amplifier gain, Over=Measure-Limit.

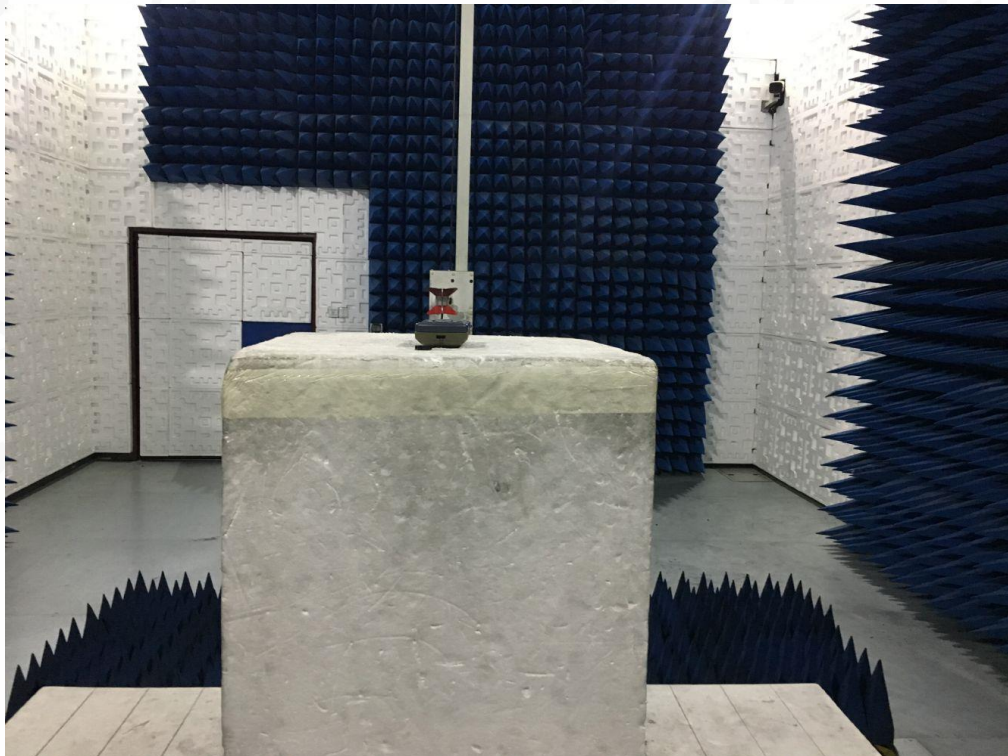
The “Factor” value can be calculated automatically by software of measurement system.

## APPENDIX A: PHOTOGRAPHS OF TEST SETUP

### RADIATED EMISSION TEST SETUP BELOW 1GHZ



### RADIATED EMISSION TEST SETUP ABOVE 1GHZ





**APPENDIX B: PHOTOGRAPHS OF EUT**

TOP VIEW OF EUT



BOTTOM VIEW OF EUT



FRONT VIEW OF EUT



BACK VIEW OF EUT



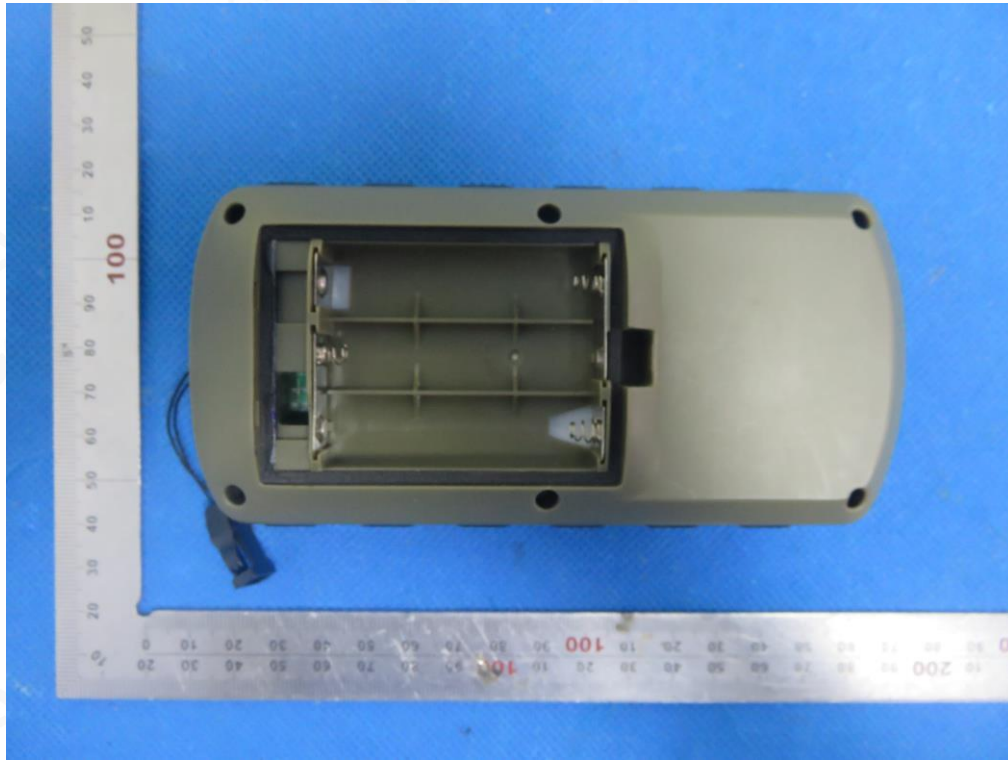
LEFT VIEW OF EUT



RIGHT VIEW OF EUT



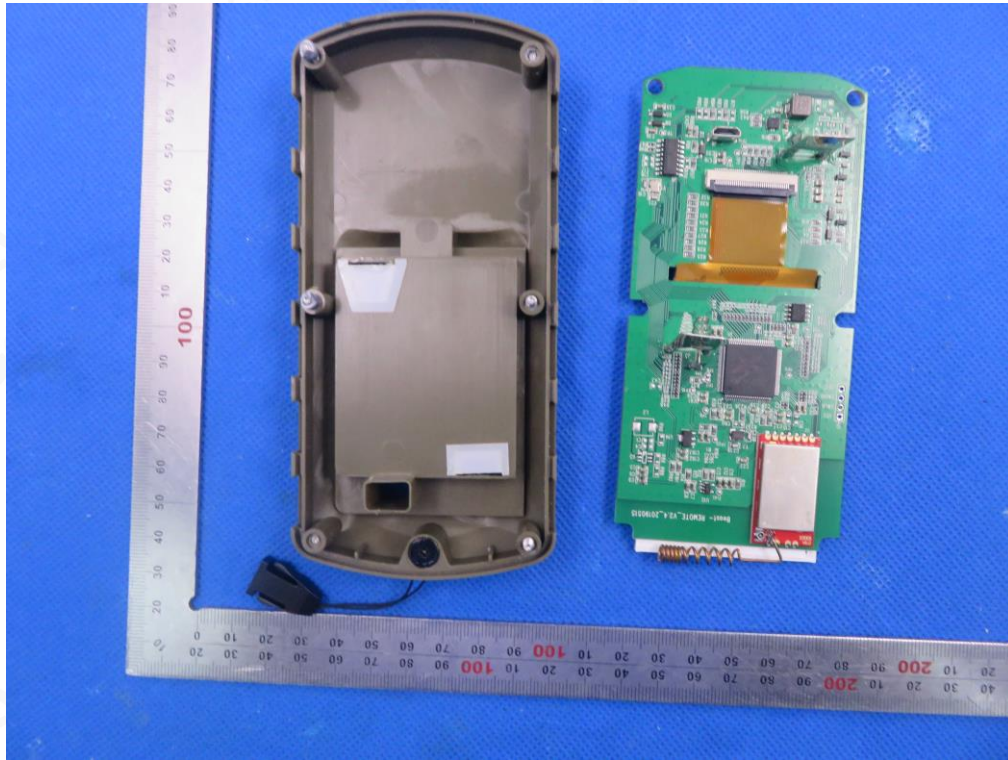
OPEN VIEW OF EUT-1



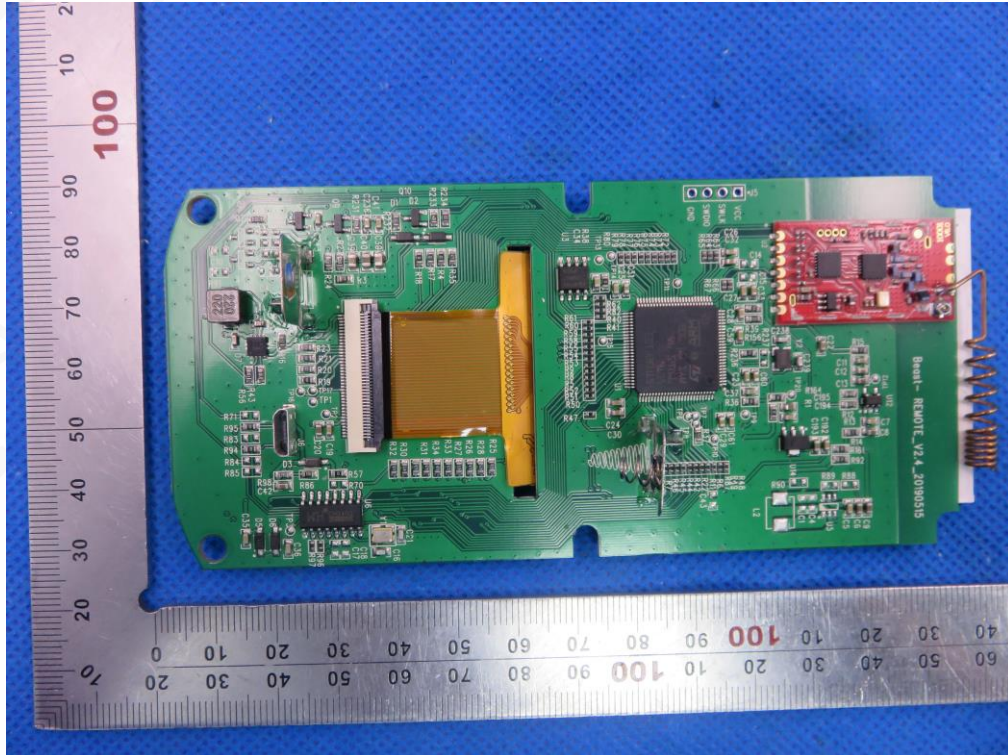
OPEN VIEW OF EUT-2



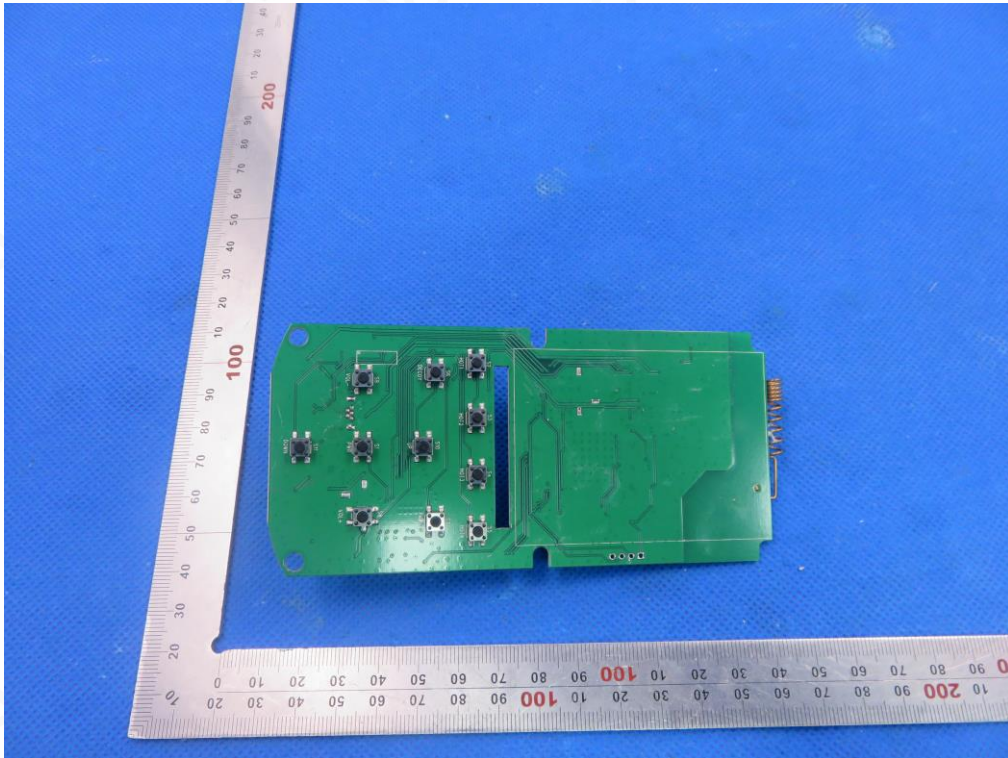
OPEN VIEW OF EUT-3



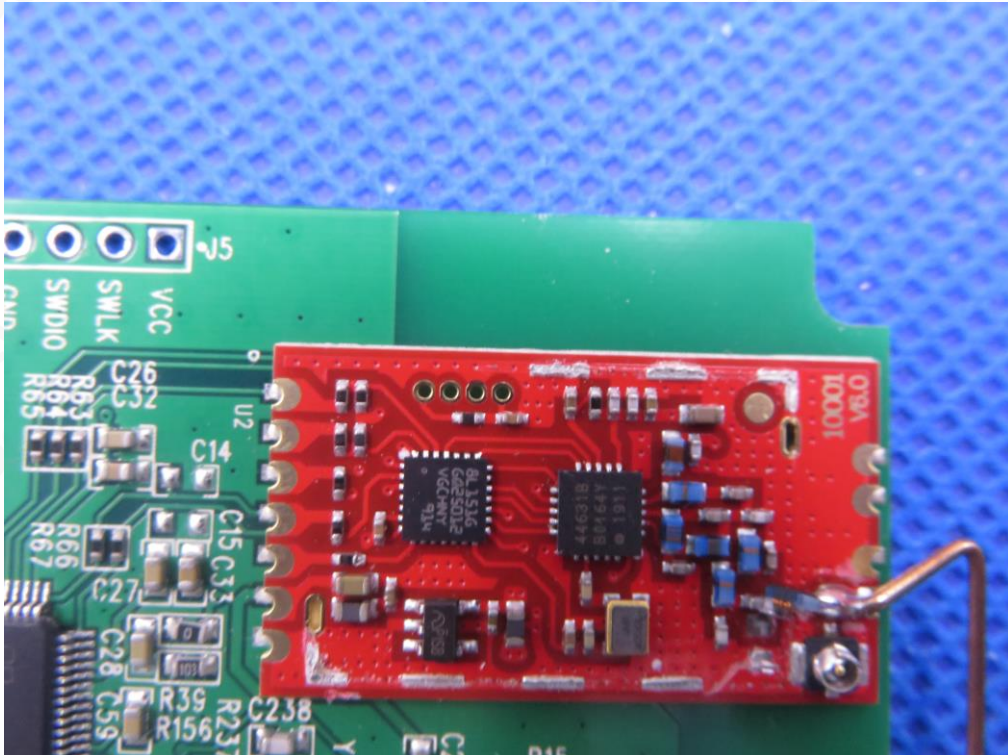
INTERNAL VIEW OF EUT-1



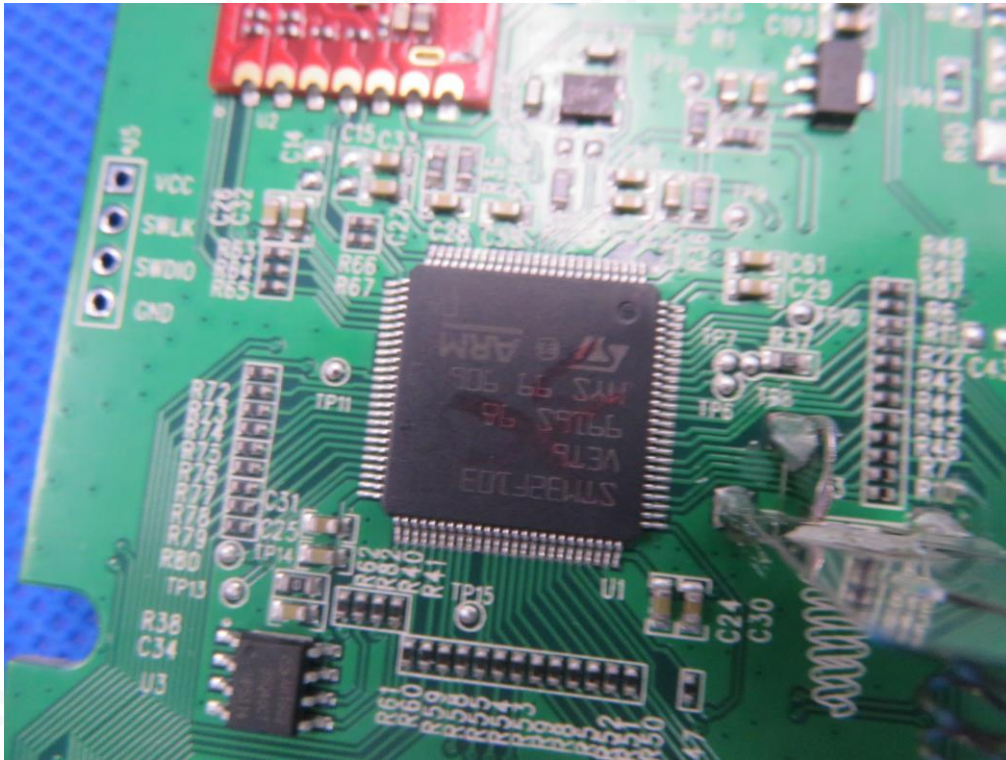
INTERNAL VIEW OF EUT-2



INTERNAL VIEW OF EUT-3



INTERNAL VIEW OF EUT-4



----END OF REPORT----

