



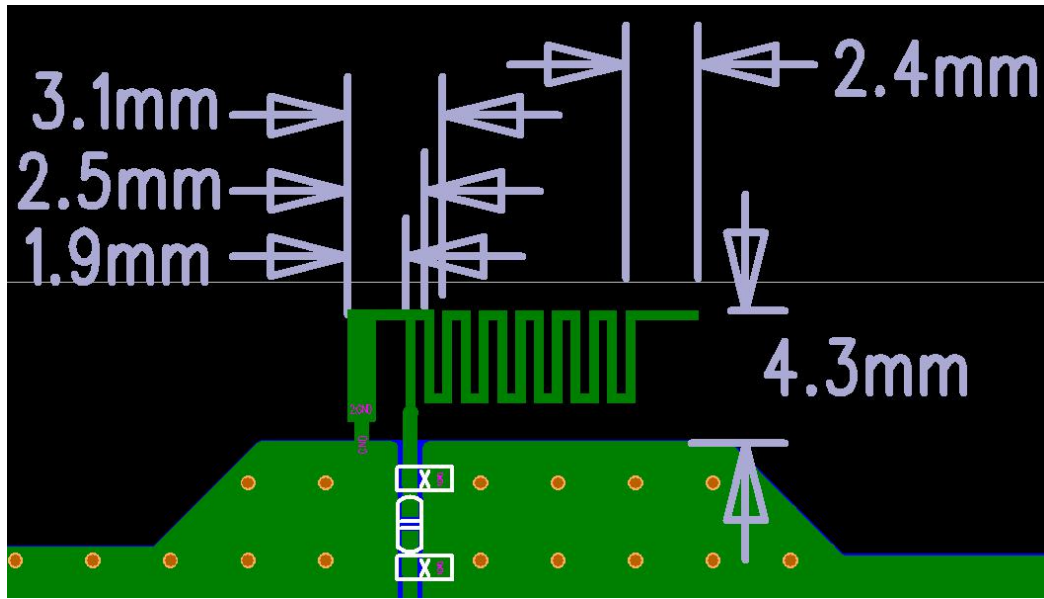
Bluetooth Antenna
specification

Model: P10Pro

Yichip Microelectronics

©2014

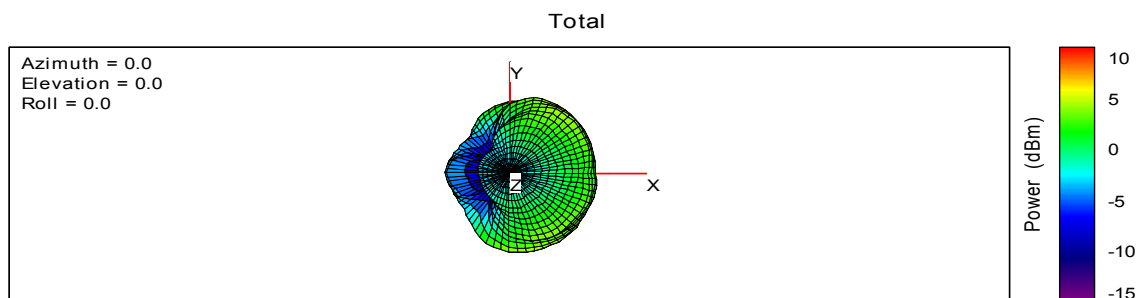
ANT5:

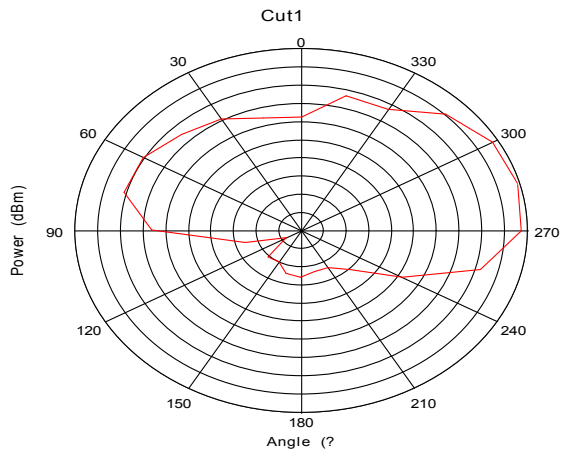


Gian and Efficiency

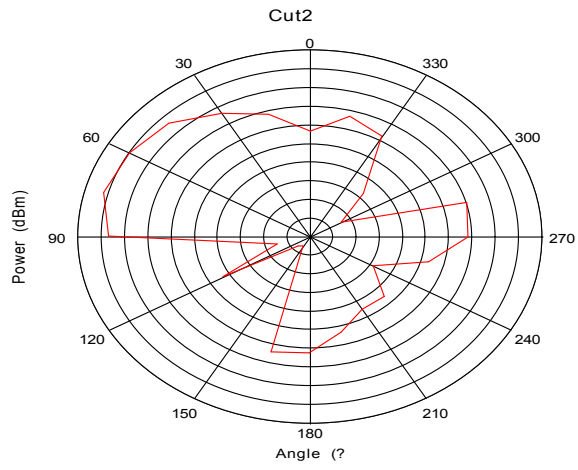
Frequency (MHz)	Efficiency(%)	Gain(dBi)
2300	34.81	-0.14
2320	38.90	0.50
2340	38.95	1.16
2360	40.11	1.28
2380	39.28	1.80
2400	41.77	2.20
2420	49.71	2.34
2440	50.23	2.58
2460	45.91	2.45
2480	42.46	2.09
2500	41.10	2.01
2520	35.58	0.96
2540	32.43	0.44

3D and 1D Radiation Patterns

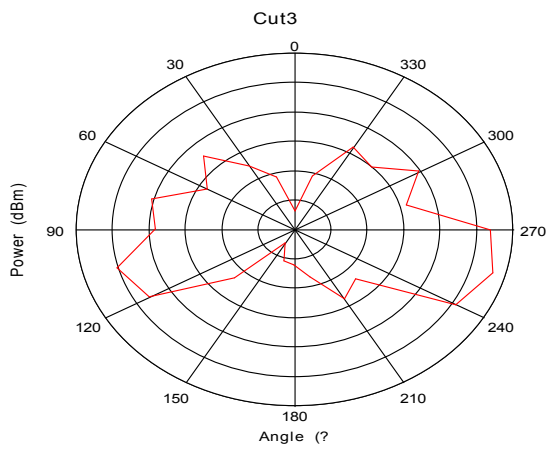




Max: 5
Min: -5
Scale: 1/div



Max: 4
Min: -16
Scale: 2/div



Max: 6
Min: -6
Scale: 2/div

ANT1-ANT8 5dbm TRP test result:

Band	ANT	Frequency	Result (dBm)	Note
BT	ANT1	2440	-6.50	1
	ANT2	2440	-0.58	2
	ANT3	2440	-2.91	3
	ANT4	2440	0.92	4
	ANT5	2440	0.09	5
	ANT6	2440	0.34	6
	ANT7	2440	0.14	7
	ANT8	2440	-2.14	8