



Welcome to the World of
E-Collar Technologies Incorporated

Finger Remote

FT-330

(FT-330TX, RX-090, FT-030)

FT-332

(FT-332TX, RX-090, FT-030)

Owner's Manual

**“Happiness is a Well
Behaved Dog”**

03

Important Notice

Caution

This product is intended to be used on DOGS ONLY.

E-Collar Technologies Incorporated is not responsible for any misuse of this Product including damages from dog bites and lost items. Seek an evaluation by professional trainer before use on aggressive dogs. It is not uncommon for aggressive dogs to associate the stimulation with the handler and take action against the handler. Sometimes dogs put under e-collar pressure during a fight can exhibit redirected aggression and become more aggressive.

The use of high levels of stimulation should only be used as a last resort and in life-threatening situations.

To prevent giving stimulation to your dog by accident, keep the stimulation level below 5 while not in use.

The range, of the FT-330/332 may vary according to terrain, weather conditions, foliage, and power lines as well as radio transmissions from other devices.

Only one Finger Remote FT-030(referred to as Finger Trainer) can be connected to Finger Remote FT-330TX(referred to as Transmitter) at the same time. (RX-090 is referred to as collar receiver)

FCC Statements.

MODEL : FT-030 FCC ID : 2ASPX-FT-030
MODEL : FT-330TX FCC ID : 2ASPX-FT-330TX

Compliance Statement (Part 15.19)

This device complies with Part 15 of the FCC Rules. Operation is subject to the following two conditions:

1. This device may not cause harmful interference, and
2. This device must accept any interference received, including interference that may cause undesired operation.

Warning (Part 15.21)

Changes or modifications not expressly approved by the party responsible for compliance could void the user's authority to operate the equipment.

FT-330/332 Owner's Manual

Welcome to the World of E-Collar Technologies Incorporated



FT-330 Series E-Collar

Remote Education Collar

Thank you for purchasing the FT-330 or FT-332 Remote Education Collar from E-Collar Technologies Incorporated. We have made every attempt to provide you with the most technologically advanced product using the most stringent quality and manufacturing standards.

We are confident you will be pleased with the results you will attain with your e-collar. Please remember you will get better results with the use of lower stimulation combined with consistent training techniques. The use of high levels of stimulation should only be used as a last resort and in life-threatening situations. Visit our youtube channel for training videos and "Like" our Facebook page to network with fellow e-collar users.

Good luck with your training and please feel free to contact us should you have any questions.

1-855-326-5527 or sales@ecollar.com

04

CHARACTERISTICS

- Range : ½ Mile
- Three Stimulation Modes Supported (Momentary, Continuous, and Combo Mode)
- Tapping Sensation or Tone Stimulation (Pavlovian Conditioning)
 - Tapping Sensation:** Alternative to Stimulation (give vibration similar to a Cell Phone)
 - Tone Stimulation :** After 1.2 seconds of tone, the collar will send continuous stimulation at the conditioning level as long as button is pressed (up to 10 seconds), leads to "Pavlovian Conditioning" whereby the dog responds to the tone.
- Quick Charge Li-Polymer Batteries
- Convenient Intensity Dial for Quick Adjustment
- Stimulation Levels Adjustable from 0 to 100
- Collar Receiver Light for locating your dog at night
- Lock and Set Stimulation Safety Feature
- Stimulation Boosting Mode provides instant control when normal stimulation is ignored - great for emergency situations.
- User Adjustable Boosting Levels from 1 to 60 Levels
- Completely Waterproof
- Convertible from 1-Dog model (FT-330) to 2-Dog model (FT-332)
- Remote Finger Button (FT-030) supported

FT-330/332 Owner's Manual

02

TABLE OF CONTENTS

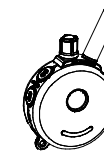
- Important Notice	03
- Characteristics	04
- Package Contents	05
- Device Operation	06
- Charging the Batteries	07
- Turning Your E-Collar ON/OFF	08
- Correctly Fitting Collar	09
- The LCD Display Description	10
- Button Functions	11
- How to Find the Proper Stimulation Level	13
- Lock/Unlock the Stimulation Level	14
- How to Set the Boost	15
- Lost Transmitter Mode	16
- Replace/Add Collar	17
Two Dog FT-332 Specifics	
- FT-332 LCD Description	18
- FT-332 Button Functions	19
- How to Lock/Unlock the Stimulation Level	21
- FT-332 Boost Level Setup	22
- Testing your E-Collar	23
- Finger Trainer	24
- Pairing Finger Trainer with FT-330/332 Transmitter	25
- Changing the Button the Finger Trainer Controls on the FT-330/332 Transmitter	27
- Operating Distance and Battery of Finger Trainer	28
- Replacing the Contact Points	29
- Training Tips	30
- Troubleshooting	31
- Two Year Warranty	32
- Accessories	33
- Safety and general information	35

FT-330/332 Owner's Manual

05

Package CONTENTS

- Transmitter



- Finger Trainer



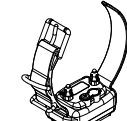
- Owner's Manual



- Test Light



- Collar Receiver with Strap (FT-332 Package includes 2 Receivers and straps)



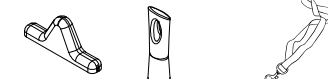
- Battery Charger (FT-332 package contains splitter cable)



- Extra Contact Points 3/4"

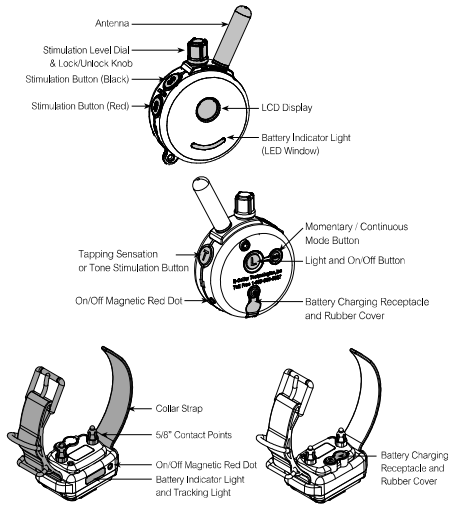


- Contact Point Tool
- Lanyard



FT-330/332 Owner's Manual

06 DEVICE OPERATION



FT-330/332 Owner's Manual

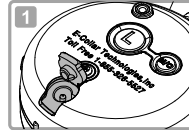
07

CHARGING THE BATTERIES

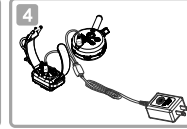
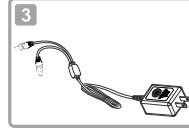
Indicator Light is blinking "Green" under normal operation, solid "Red" when stimulation is applied, blinking "Red" when recharging is required.

Do not allow the batteries to get hot or be fully discharged, store at room temperature and 50% capacity charge.

Transmitter Battery Charging Receptacle and Rubber Cover



Collar Receiver Battery Charging Receptacle and Rubber Cover



- The indicator light will turn solid red during charge cycles and turn green if it is fully charged, (approximately 2 hours)

IMPORTANT BATTERY CARE INFORMATION :

Your e-collar is outfitted with Li Polymer batteries which requires specific care to assure longevity. It is best not to let the battery be fully discharged and if it does, recharge immediately or irreversible damage may occur. Keep the units away from extreme heat and cold temperatures.

FT-330/332 Owner's Manual

08

TURNING YOUR E-COLLAR ON/OFF

- To turn the Collar Receiver On or Off :

Place the small red dot on the Transmitter to the small red dot on the Collar Receiver.



- To turn the Transmitter On or Off :

Press the "L" button for more than 1 second.

If the Transmitter is turned on, a short press of the "L" button will activate the tracking light of the collar receiver. Press and hold for 2 seconds to turn Transmitter off.

- Holding the Transmitter

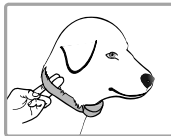
To obtain the maximum range hold the transmitter like the torch on the Statue of Liberty. Keep the antenna away from your body or fingers at all times, touching the antenna will greatly reduce the range.



FT-330/332 Owner's Manual

09

CORRECTLY FITTING COLLAR



The collar should be adjusted to allow the "contact points" to have direct contact with the skin. You should be able to fit a couple of fingers between the collar strap and your dog's skin.

Too tight poses the risk of skin irritation and discomfort. Too loose and the contact points will not be able to administer the stimulation reliably and can cause skin irritation due to chafing. Short hair breeds may need the 3/8" microprobes offered as an accessory item, contact customer service for details. The optimal position for the collar receiver is on either side of the dog's windpipe. If the factory installed 5/8" contact points are not making good contact due to thick fur, see page 24 for changing contact point.

IMPORTANT NOTICE

To prevent the occurrence of skin irritations the Collar Receiver should never be worn for more than 12 hours per day. Should your dog experience skin irritations from over exposure to the contact points remove the collar receiver unit immediately and stop using your e-collar until all skin irritations are completely healed. Antibiotic ointment will aid in the healing process. Some dog breeds have extra thick fur or extra short fur that requires special contact points. Please contact our customer service or visit www.ecollar.com for more information.

FT-330/332 Owner's Manual

10

THE LCD DISPLAY DESCRIPTION



Blinking "1D" indicates the stimulation is unlocked and ready for adjustment, Solid "1D" indicates stimulation is "Locked"

Displays the Stimulation Level : "0" means no stimulation and "HI" means the highest stimulation level(100)

Momentary / Continuous Button "M/C"- M/C Button on the backside of the transmitter allows the user to easily switch between the three stimulation modes. Function of stimulation button changes by mode.

→ Combo Mode → Momentary Mode → Continuous Mode

Stimulation Button	Combo Mode	Momentary Mode	Continuous Mode
Display			
S (Black)	Momentary	Momentary	Continuous
S (Red)	Continuous	Momentary Booster	Continuous Booster
S(Black)+S(Red)	Momentary Booster	N/A	N/A
S(Red)+S(Black)	Continuous Booster	N/A	N/A
T	Tapping Sensation or Tone Stimulation		

FT-330/332 Owner's Manual

11

BUTTON FUNCTIONS

Momentary Stimulation

Sends a single pulse of stimulation at the set level when you press stimulation button.

Continuous Stimulation

Sends pulses of stimulation for as long as the button is pressed, timing out after 10 seconds (this is a safety feature designed to prevent accidental over-stimulation of your dog). The stimulation can be increased or decreased while the button is being pressed.

Tapping Sensation

Vibration specifically designed to distract your dog, great for deaf dogs and stimulation sensitive dogs.

Tone followed by Stimulation (Pavlovian Conditioning)

After 1.2 seconds of tone, the collar will administer continuous stimulation at the conditioning level for as long as the button is pressed (up to 10 seconds). Release before 1.2 seconds for tone only.

Stimulation Button S (Black)

- Sends momentary or continuous stimulation to the collar receiver based on the state of Momentary/Continuous Mode.

Stimulation Button S (Red)

- Sends momentary or continuous boosted stimulation.
- If stimulation level is 10, boosted stimulation sends [10 + boost level]
- The default value of the boosted level is 5 and it can be adjusted to any value between 1 and 60. Smaller and more sensitive breeds should use levels 1 through 20, larger and/or more stubborn breeds may need a higher boost.

FT-330/332 Owner's Manual

BUTTON FUNCTIONS

Boosting Stimulation in Combo Mode

Momentary Boosting is accomplished by first sending a momentary stimulation pulse "S (Black)" to the dog and then pressing "S (Red)" button without releasing "S (Black)" button. (PLEASE PRACTICE)
Continuous Boosting is accomplished by first administering continuous stimulation "S (Red)" to the dog and then pressing the "S (Black)" button without releasing the "S (Red)" button.

Tapping Sensation (Vibration) / Tone Stimulation "T"

Sends Tapping Sensation or Tone Stimulation to the collar receiver. (Default setting is tapping sensation).

To toggle between tapping sensation and tone stimulation, press "L" and "T" buttons simultaneously when the intensity level is "0".

- Single beep and "A" icon indicates Tone followed by Stimulation.
- Double beep and "T" icon indicates Tapping Sensation (Vibration).

Tapping Sensation ↔ Pavlovian Stimulation

Light Button "L" (ON/OFF Center Button on Back)

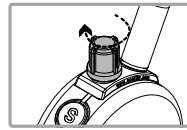
Pressing and releasing "L" button will change the night tracking light mode.

OFF -> Flashing -> Solid -> OFF

Great for locating your dog after dark. (PLEASE PRACTICE)

Pressing and holding Light (L) button will power off the transmitter.

HOW TO FIND THE PROPER STIMULATION LEVEL



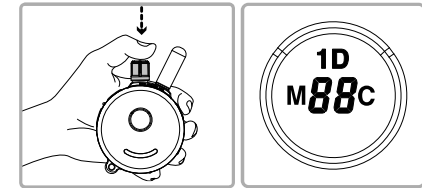
Rotating clockwise increases the stimulation level, and rotating counter-clockwise lowers the stimulation level.

It is highly recommended that the user practices changing levels and modes before putting the collar receiver on a dog.

Setting the correct stimulation level for your dog is very important. To set your "conditioning" stimulation level, correctly put the collar receiver on your dog (see page 9 for instructions). Let the dog get used to the collar receiver for a couple of hours.

While watching your dog, turn the level to "0" and press the continuous stimulation button. Slowly turn the stimulation up at a rate of approximately 2-3 levels per second. When your dog first perceives the stimulation, usually between 5 and 20, release the button. This is your "conditioning" stimulation level. You may need to increase the "conditioning" level a few levels to get your dog to respond at first, some dogs are more stubborn and need more stimulation. The boosted level is typically 5 to 20 levels higher than the "conditioning" level.

LOCK/UNLOCK THE STIMULATION LEVEL



How to Lock/Unlock the Stimulation Level

Set the desired stimulation level and then press on the top of the stimulation dial until you see "1D" light up on the top portion of the LCD display. Flashing "1D" indicates unlocked stimulation and Solid "1D" indicates locked stimulation.

If the stimulation level does not change when you rotate the stimulation knob, you have successfully locked the stimulation level.

To unlock the stimulation level simply press the stimulation knob again to unlock the stimulation level.

HOW TO SET THE BOOST

Boosted Stimulation adds the set boost level to the stimulation level, great for those situations when your dog does not respond to the "conditioning" level. Determining the Boosted stimulation level is a little more difficult than stimulation level setting due to the wide differences in temperaments and stimulation tolerance among the many breeds of dogs. On average, it is normally 5 to 20 levels higher than the "conditioning" level. It is important to have it set high enough to get the desired response from your dog.

1. Change the mode to Momentary Mode.
(Press M/C button until "M" is displayed)
2. Change the intensity level to "0".
3. Press S(Black) button for more than 5 seconds.
4. The intensity level will change from "0" to a flashing "1".
5. Rotate the dial to the desired boost level (1 to 60).
6. Press S(Black) button again to save and exit the boost level changing mode.

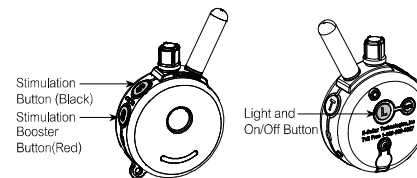
LOST TRANSMITTER MODE

Your FT-330/332 E-Collar transmitter allows the user to activate a 6 hour timer. After 6 hours, the transmitter will begin to beep providing the ability to locate the transmitter. The LCD displays "AL" during beeping.

Lost transmitter mode is activated by simultaneously pressing the Light (L) button and the stimulation button (Black "S") when the intensity level is set to zero. Three short beeps will sound confirming the activation of the locator timer.

Lost transmitter mode is deactivated by simultaneously pressing the Light (L) button and the red stimulation button (Red "S") when the intensity level is set to zero. Two short beeps will sound confirming the deactivation of the locator timer.

Lost transmitter mode will be cancelled whenever the transmitter is turned off. Make sure to reactivate lost transmitter mode when you turn off transmitter.



REPLACE/ADD COLLAR

Occasionally, it is necessary to pair/sync a transmitter to a collar receiver, the following procedure will accomplish this:

1. Turn on the Transmitter
2. Turn intensity dial to "0"
3. Make sure the collar receiver is turned off.
4. Put the Transmitter's Red Dot against the Collar Receiver's Red Dot for more than 5 seconds, green light on Receiver will flash rapidly
5. Immediately after, press and hold Black "S" Button followed by the Red "S" Button until you hear confirmation sound from Collar Receiver.

HOW TO CHANGE THE TRANSMITTER TO A 2 DOG TRANSMITTER

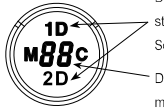
The button functions will change. The changes are described on pages 18 through 22. You can change the transmitter back to the 1Dog system (330) at any time.

1. Turn on the Transmitter.
2. Press the Red "S" followed by the Black "S" followed by the "T" Button simultaneously for more than 2 seconds until you hear the confirmation beeps.
3. Repeat step 2 to return back to a 1 dog system.

ADD/REPLACE COLLAR FOR SECOND DOG

1. Turn on the Transmitter
2. Turn intensity dial to "0"
3. Make sure Receiver is turned off.
4. Put the Transmitter's Red Dot against the Collar Receiver's Red Dot for more than 5 seconds, green light on Receiver will flash rapidly.
5. Immediately after, press and hold Red "S" Button followed by the Black "S" Button until you hear confirmation sound from Collar Receiver.

18 FT-332 LCD DESCRIPTION



Blinking 1D or 2D icons indicates the stimulation level is ready for adjustment. Solid icon indicates stimulation locked.

Displays the Stimulation Level : "0" means no stimulation and "HI" means the highest stimulation level(100)

Momentary / Continuous Button "M/C"- M/C Button on the backside of the transmitter allows the user to easily switch between two stimulation modes either momentary or continuous.

Button	Stimulation (1D or 2D)		TS (Vibration) or Tone
	Momentary Mode	Continuous Mode	
M/C Button			N/A
Display			
S (Black)	Dog 1 Momentary	Dog 1 Continuous	Dog 1 TS (Vib) or Tone Stimulation
S (Black) + S (Red)	Dog 1 Momentary Booster	Dog 1 Continuous Booster	N/A
S (Red)	Dog 2 Momentary	Dog 2 Continuous	Dog 2 TS (Vib) or Tone Stimulation
S (Red) + S (Black)	Dog 2 Momentary Booster	Dog 2 Continuous Booster	N/A
L	"L" in Dog 1 set mode will control Dog 1 light "L" in Dog 2 set mode will control Dog 2 light		N/A

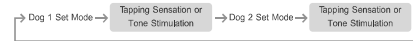
FT-330/332 Owner's Manual

19

FT-332 BUTTON FUNCTIONS

Mode Button "T"

Mode button allows the user to change modes as shown in the diagram



1 Dog Set Mode - LCD display shows 1D

2 Dog Set Mode - LCD display shows 2D

Tapping Sensation or Tone Stimulation- LCD display a T

Light Button(On Back) "L"

When the "L" button is pressed, "L" will be displayed.

If you press L while in Dog 1 Mode, Dog 1's Light will activate.

If you press L while in Dog 2 Mode, Dog 2's Light will activate.

Tracking Light will Cycle: **Flashing** -> **Solid** -> **OFF** when L is pressed.

Tapping Sensation / Tone and Pavlovian Stimulation "T"

To toggle between tapping sensation and pavlovian stimulation press "L" and "T" buttons simultaneously for 2 seconds when the intensity level is "0".

- Single beep and "A" icon indicates pavlovian stimulation
- Two beeps and "T" icon indicates tapping sensation.

FT-330/332 Owner's Manual

20

FT-332 BUTTON FUNCTIONS

Momentary stimulation

Sends a single pulse of stimulation at the set level when you press the stimulation button.

Continuous stimulation

Sends continuous pulses as long as the stimulation button is pressed, timing out after 10 seconds (this is a safety feature designed to prevent accidental over-stimulation of your dog). The stimulation can be increased or decreased while the button is being pressed.

Tapping Sensation

Vibration specifically designed to distract your dog, great for deaf dogs and stimulation sensitive dogs.

Tone followed by Stimulation (Pavlovian Conditioning)

After 1.2 seconds of tone, the collar will send continuous stimulation at the conditioning level for as long as the button is pressed (up to 10 seconds). Release before 1.2 seconds for tone only.

Boosting Stimulation

Sends boosted stimulation until you release buttons.

To boost **Dog 1**, press "S" (Black) button followed by "S" (Red) button

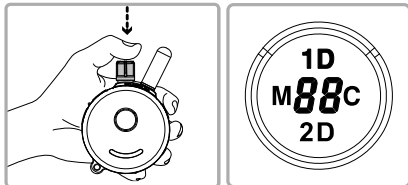
To boost **Dog 2**, press "S" (Red) button followed by "S" (Black) button

(PLEASE PRACTICE)

FT-330/332 Owner's Manual

21

HOW TO LOCK/UNLOCK THE STIMULATION LEVEL



How to Lock/Unlock the Stimulation Level

See page 13 for help finding the proper stimulation level. You can lock each dog to a different level.

In 1Dog Mode, if you see "1D" icon is blinking (unlocked)

Set the desired stimulation level and then press the stimulation dial until you see "1D" icon stop blinking.

In 2Dog Mode, if you see "2D" icon is blinking (unlocked)

Set the desired stimulation level and then press the stimulation dial until you see "2D" icon stop blinking.

If the stimulation level does not change when you rotate the stimulation dial, you have successfully locked the stimulation level. To unlock the stimulation level simply press the stimulation knob again at 1Dog/2Dog mode and it will unlock the stimulation level.

FT-330/332 Owner's Manual

22

FT-332 BOOST LEVEL SETUP

Boosted Stimulation adds the set boost level to the stimulation level, great for those situations when your dog does not respond to the "conditioning" level. Determining the Boosted stimulation level is a little more difficult than stimulation level setting due to the wide differences in temperaments and stimulation tolerance among the many breeds of dogs. On average, it is normally 5 to 20 levels higher than the "conditioning" level. It is important to have it set high enough to get the desired response from your dog.

How to Setup Boost Level for first dog

1. Change the mode to Momentary Mode
(Press M/C button until "M" is displayed)
2. Change the intensity level to "0"
3. Press S(Black) button for more than 5 seconds
4. The intensity level will change 0 to 1 and start to blink.
5. Rotate the dial to change the boost level (up to 60).
6. Press S(Black) button again to save and exit from Boost Level Change Mode. If any other button is pressed or idle for 20 sec, Boost Level Change Mode will be cancelled.

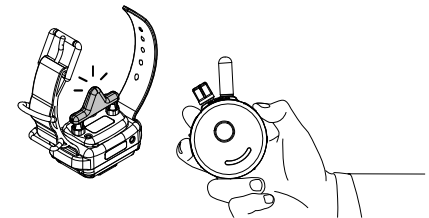
If you want to change boost level for dog 2,

Press S(Red) instead of S(black) on step #3, and #6

FT-330/332 Owner's Manual

23

TESTING YOUR E-COLLAR

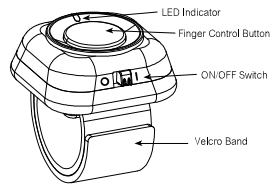


If you need to check your unit, hold the test light against the contact points on the collar receiver. This test will let you know that the collar receiver is generating the proper sensation to the dog, it should brighten in a smooth fashion as the dial is turned up. Some people find it easier to hold the collar receiver in the palm of their hand and slowly turn the stimulation up using the continuous mode, typical human feel it between 8 and 25 depending on the dryness of their hands.

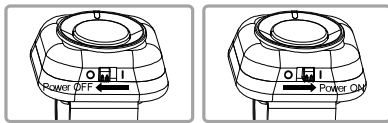
Feel free to contact us if you have need help, 1-855-326-5527.

FT-330/332 Owner's Manual

24 FINGER TRAINER



Slide the on/off switch to turn on/off Finger Trainer.
If Finger Control Button is pressed when switch is on, LED will flash red.

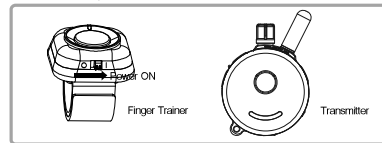


FT-330/332 Owner's Manual

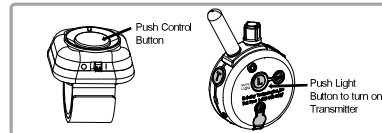
25

PAIRING FINGER TRAINER WITH FT-330/332 TRANSMITTER

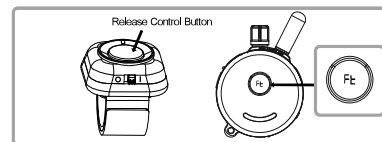
1. Turn on Finger Trainer



2. While holding down the control button on the Finger Trainer, turn on Transmitter



3. Release the stimulation button on the Finger Trainer when transmitter is turned on.



FT-330/332 Owner's Manual

26

PAIRING FINGER TRAINER WITH TRANSMITTER

4. Check for successful pairing (Collar Receiver is not to be on the Dog)
 - (1) Turn Transmitter stimulation dial to any value other than "0".
 - (2) Press the Finger Trainer control button and make sure the Transmitter is activating the collar receiver.
(Stimulation Button (Black S1) is the factory default setting.)

FT-330/332 Owner's Manual

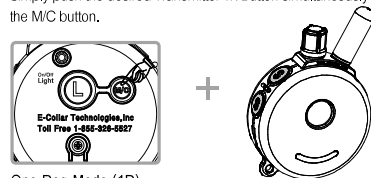
27

CHANGING THE BUTTON THE FINGER TRAINER CONTROLS ON THE TRANSMITTER

The Finger Trainer can be set to control any one of the 3 Buttons of the Transmitter, S1(Black) S2(Red) and T Button.

- How to set the Finger Trainer to a control a different Transmitter Tx button.

Simply push the desired Transmitter Tx Button simultaneously with the M/C button.



• One Dog Mode (1D)

Finger Trainer Control Button	How To Set	Possible Functions
S1(Black) Button (Default)	M/C Button + S1(Black) Button	M or C
S2(Red) Button	M/C Button + S2(Red) Button	C, M+ or C+
T Button (Tone or Vibration)	M/C Button + T Button	Vibration or Tone

• Two Dog Mode (2D)

Finger Trainer Control Button	How To Set	Possible Functions
S1(Black) Button (Default)	M/C-Button + S(Black)-Button	1Dog - M, C, V or T
S2(Red) Button	M/C-Button + S(Red)-Button	2Dog - M, C, V or T
T Button (Toggle Stimulation to Tone/Vib)	M/C-Button + T-Button	Stimulation Mode select

NOTE: The Finger Trainer controls the physical button, not the function of the button. The Transmitter controls the function.

FT-330/332 Owner's Manual

28

OPERATING DISTANCE AND BATTERY OF FINGER TRAINER

- Operating distance between Finger Trainer and Transmitter is maximum 12 feet.

- CR2032 3 Volt Lithium Battery is used.

- To replace battery, simply remove the 4 small screws on the back of the Finger Trainer.

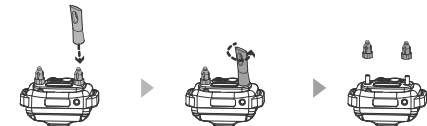
- Battery Life is Approximately 1 Year, life will vary with usage.

FT-330/332 Owner's Manual

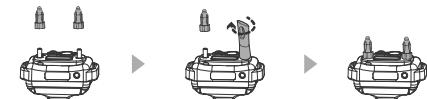
29

REPLACING THE CONTACT POINTS

The standard 5/8" contact points are used for most dogs. Thicker fur breeds require the longer 3/4" contact points. Replace the 5/8" contact points by following the instructions below using the enclosed contact point tool.



1. Loosen both contact points by rotating the contact point counter-clockwise using the contact point tool.



2. Install the 3/4" contact points onto the bolt and tighten the contact points by rotating them clockwise with the contact point tool.

* For short haired breeds such as boxers, dachshund, pit bulls, etc, and thick fur breeds please visit our website or contact us to inquire about special contact points for your dog.

FT-330/332 Owner's Manual

TRAINING TIP

IMPORTANT TRAINING TIPS

E-Collars can be used to reinforce commands your dog already knows or as a learning sensation when paired with leash pressure. It is not a replacement for basic leash obedience training, but a tool to allow you to better communicate with your dog. For best results, use the least amount of stimulation required to get the attention of your dog. A calm and consistent approach to training will always produce better long term results. It is highly recommended that aggressive dogs be taken to a professional trainer for evaluation before e-collar use. There are many different e-collar training techniques recommended by a variety of professional trainers. We believe you, the owner of the dog, can best determine the most successful technique for your dog. We recommend first time users immerse themselves in learning about the proper techniques or seek a professional e-collar trainer. The technique used in the initial introduction of the e-collar is very important to the success of e-collar training. Search E-Collar Technologies Incorporated on youtube and subscribe to our channel, new training videos are posted weekly. Also "Like" our Facebook page to receive more training advice and connect with other e-collar users.

Good Luck with your training from your friends at
E-Collar Technologies Incorporated

TROUBLESHOOTING

? My Receiver / Transmitter is not turning on

- A Make sure the collar receiver is fully charged. Collar receiver light should turn green when the battery is connected to the charger.

? My Receiver is not responding

- A Check Receiver's indicator light is blinking green and Transmitter LCD is on. Check to make sure the collar receiver's indicator light is red when the stimulation button is pressed.

- A Try pairing/syncing the transmitter to the receiver. (Page 17)

? The receiver doesn't seem to provide stimulation to the dog

- A Remove Contact points from Receiver. Connect Test Light to the receiver and test for stimulation. If the test light is blinking, receiver is providing stimulation.

? Max range of device has been decreased

- A Check Transmitter's battery condition. Working range decreases when the battery level is low. Keep your fingers from touching the antenna. See the bottom of page 8 for the proper technique to maximize range.

? You cannot change the stimulation level of the Transmitter

- A Make sure 1D or 2D on transmitter LCD is blinking. If 1D or 2D icons are solid, you cannot change stimulation. You can unlock the stimulation at any time by pressing the stimulation knob for 1 second.

CONTACT US FOR EXPERT HELP WITH YOUR E-COLLAR

TWO YEAR WARRANTY

To register your FT-330/332 product, please log onto our website at www.ecollar.com, click on the Product Registration link and fill out the required information. Please register your product within 30 days of your purchase. If you do not have access to a computer, please call our toll free number of 1-855-326-5527 and one of our customer service representatives will register your product for you. In the event the product is not properly registered proof of purchase is not required to obtain warranty, we will estimate your purchase date by the serial number. Misuse, improper maintenance, lost units are not covered by this warranty. Your complete satisfaction is our only concern.

The FT-330/332 Finger Remote Educator you have is our most recent design, it is different from the previous ET-300/302 Mini Educator, so please let us know that you have the new FT-330/332 Finger Remote Educator design when communicating with us.

**"Making Bad Dogs Good
and Good Dogs Better!"**

ACCESSORIES

- Micro-Probes Contact Points
- 50% Stimulation Reducer



- Thick-Hair Contact Points
- Short Probe Comfort Adapter



- Car Charger
- Leather Belt Holster (specify Right or Left hand)



- Belt Clip



www.ecollar.com

ACCESSORIES

- Sew-On Holster
- 3/4" Quick Snap Nylon Collar (black or red)



- 3/4" Bungee Collar (24" or 30" length)
- Dummy Collar (specify Nylon or Biothane strap)



- Deluxe Hard Carry Case
- 1" MAX Probes



www.ecollar.com

SAFETY AND GENERAL INFORMATION

- The FT-330/332 Education Collar complies with all National and International Standards and Guidelines for human exposure to radio frequency electromagnetic energy.
- Nearly all electronic devices are susceptible to electromagnetic interference (EMI) if inadequately shielded or designed without precautions to EMI.

IMPORTANT NOTICE

1. To avoid Electromagnetic Interference and/or compatibility conflicts, please turn off your transmitter and collar receiver in any facility where posted notices instruct you to do so. Never use your equipment in close proximity of a Hospital or Health Care Facility or enter the facility without turning off both units.
2. Any change or modification made to the transmitter, including the supplied antenna, without the expressed written approval of E-Collar Technologies Incorporated could void your authority to operate.

TRAINING NOTES

FT-330/332 Owner's Manual

TRAINING NOTES

FT-330/332 Owner's Manual



E-Collar Technologies Incorporated

2120 Forrest Park Drive
Garrett, IN 46738-1887

1-260-367-0051 (US & International)
1-855-326-6527 (US Toll Free)
1-855-226-5527 (US Toll Free Fax)

sales@ecollar.com
www.ecollar.com
customerservice@ecollar.com



Thank you for Supporting American Workers
Copyright 2019 E-Collar Technologies Incorporated
All Rights Reserved.