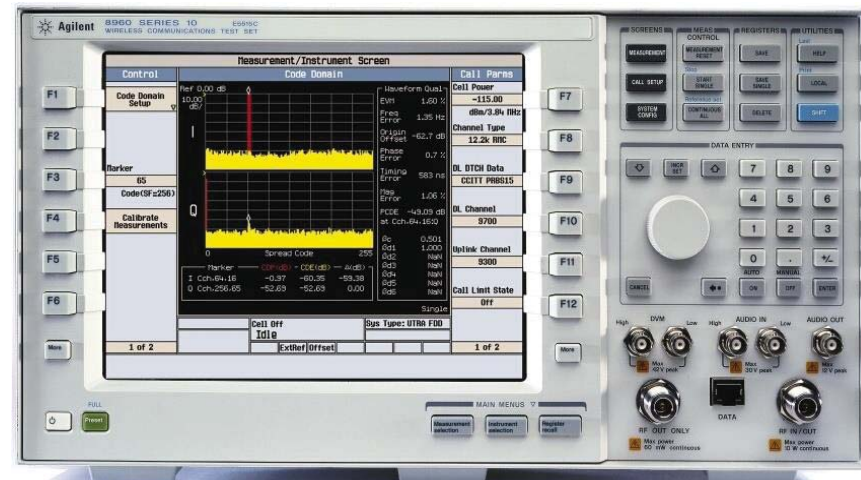
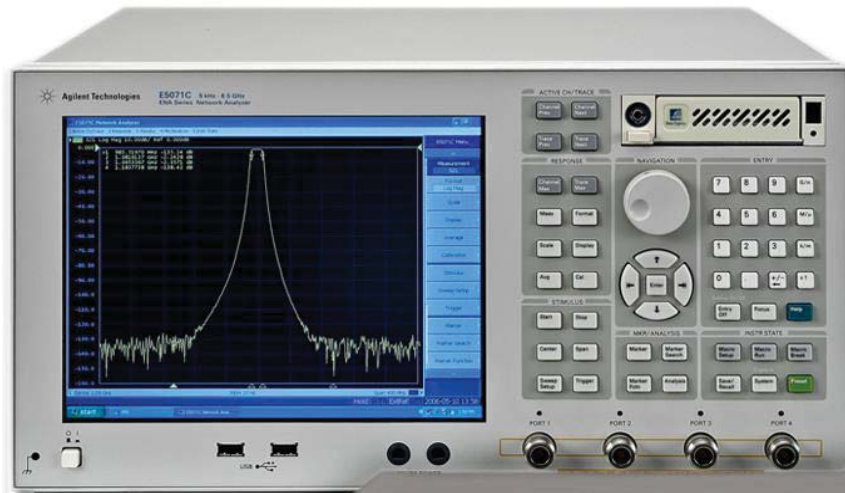
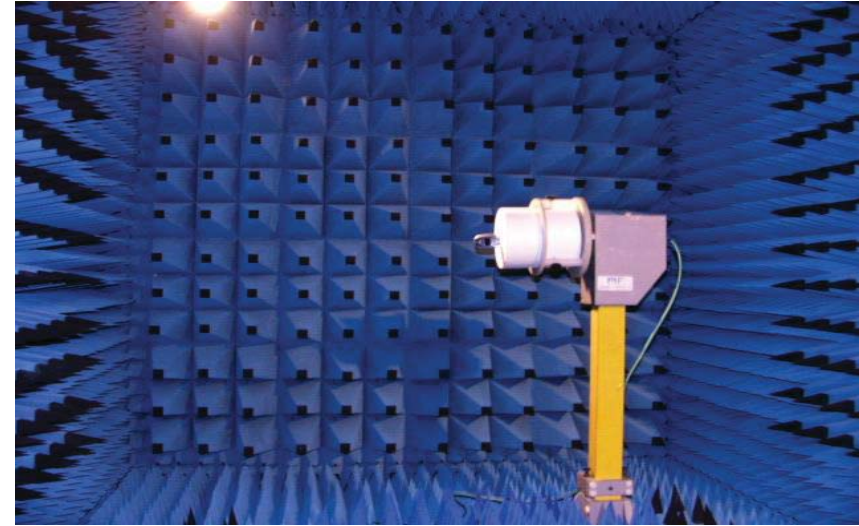


Index:

- 1. Testing Item & Equipments**
- 2. Test Data**

1. The Equipment of Active Test

- 1: Anechoic Chamber 7x4x3 m (3D)
- 2: Rohde & Schwarz CMW500
- 3: AGILENT 8960 5515C
- 4: Network Analyzer-AGILENT ENA5071B



2. Test Data

	TRP (dBm)	TIS (dBm)
LTEB2	19.1	
	18.8	-92.6
LTEB4	19.0	
	19.3	-92.1
LTEB5	17.2	
	16.5	-89.1
LTEB12	18.7	
	18.6	-92.2
LTE B17	18.9	
	18.8	-92.9
LTEB66	19.0	
	19.5	-91.0
LTEB71	17.8	
	18.4	-90.2
LTEB41	16.8	
	17.5	-91.6

	TRP (dBm)	TIS (dBm)
LTEB7	17.2	
	17.6	-91.1
GSM850	25.0	
	23.8	-101.0
GSM900	22.0	
	21.3	-97.0
DCS1800	24.3	
	25.5	-104.5
PCS1900	26.0	
	25.7	-104.7
WCDMAB2	19.2	
	18.8	-105.1
WCDMAB4	18.9	
	19.0	-104.7
WCDMAB5	17.3	
	16.4	-101.8

GPS / WIFI / BT

GPS	
Location	test result
2nd floor	Cold start 50 second positioning, maximum CN value 44, can use more than 5 stars

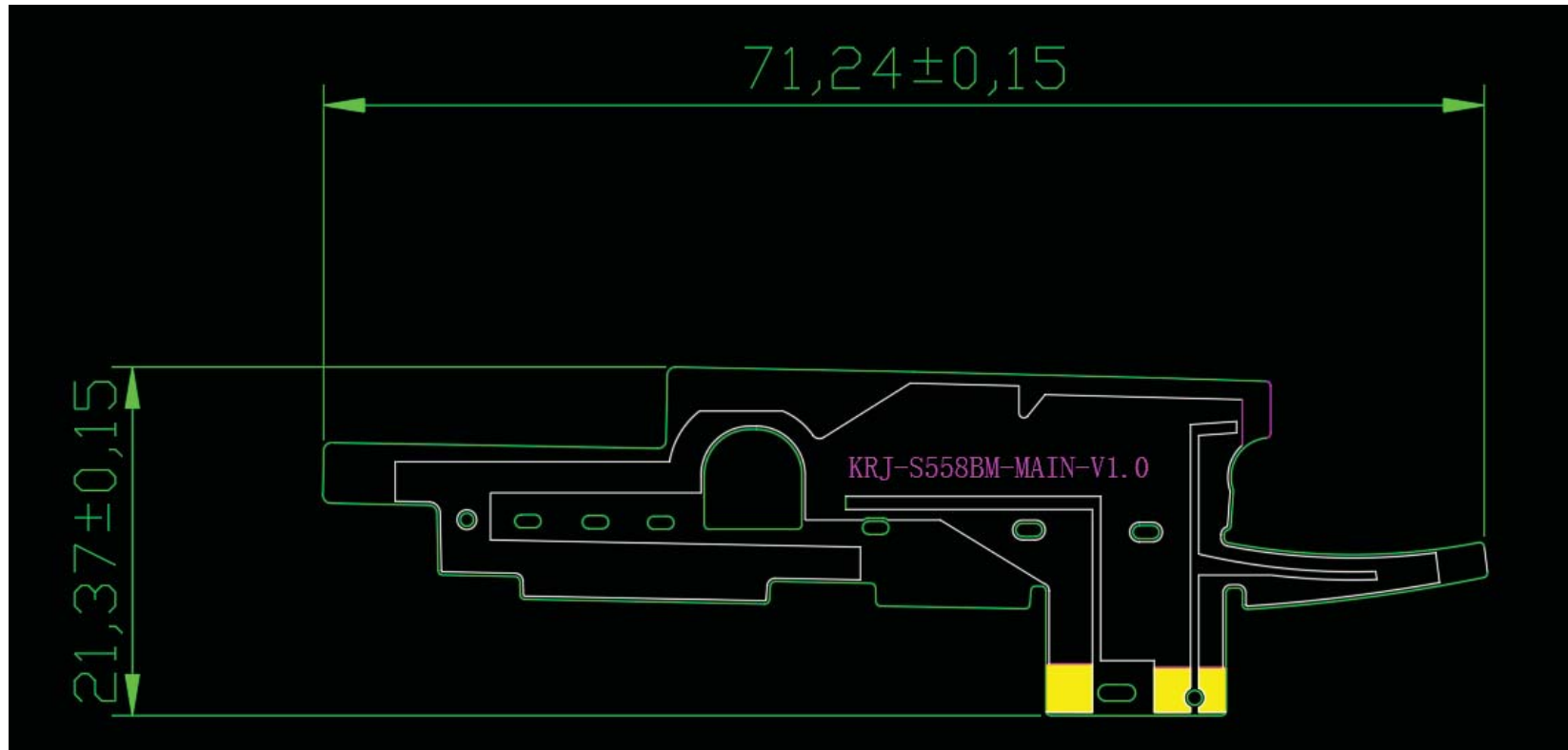
BT	
Location	test result
10 meters	Clear forward voice calls within the range

Test	Wifi 2G TRP		
Result	1	6	11
TRP (dBm)	11.3	11.7	11.5
TIS (dBm)	-81.1	-80.5	-80.2



Antenna size diagram

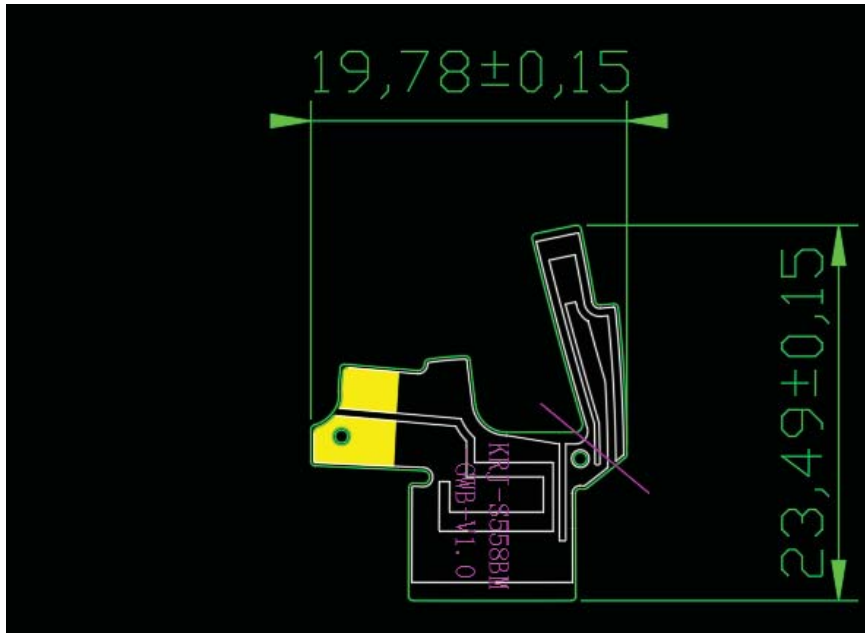
Main antenna size diagram



Unit: mm

Three in one antenna size diagram

Unit: mm



Dimensional diagram of diversity antenna

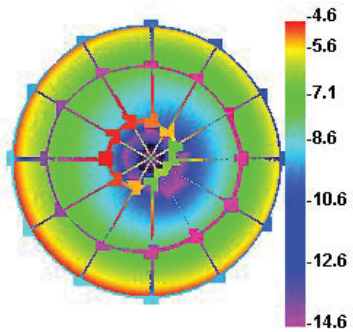


Antenna gain

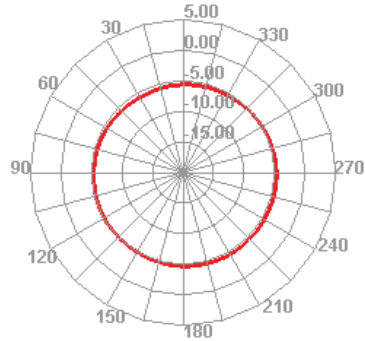
Main antenna	Frequency range	Gain (dBi)	pattern
GSM850/W5/B5	824-894MHZ	-1.0	IFIA
GSM900	880-960MHZ	-0.5	
GSM1800	1710-1880MHZ	0.5	
GSM1900/W2/B2	1850-1990MHZ	0.5	
B4	1710-2155MHZ	0.5	
B7	2500-2600MHZ	0.6	
B12	699-746MHZ	-2.0	
B17	704-746MHZ	-2.0	
B41	2496-2690MHZ	0.6	
B66	1710-2200MHZ	0.5	
B71	617-700MHZ	-2.5	
wifi2.4G/BT	2400-2500MHZ	0.8	
GPS	1575.42MHZ	0.3	

Main antenna apple diagram

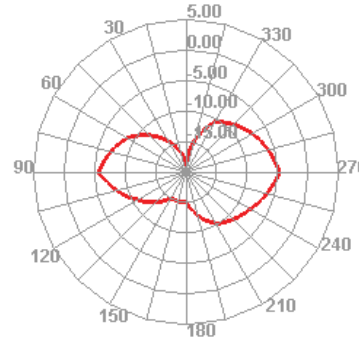
690.000MHz



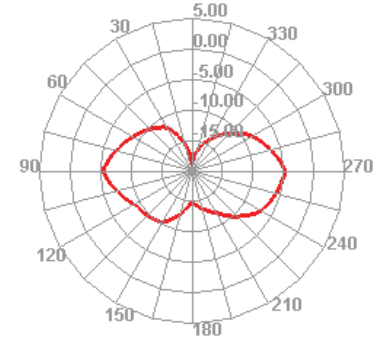
690.000MHz H



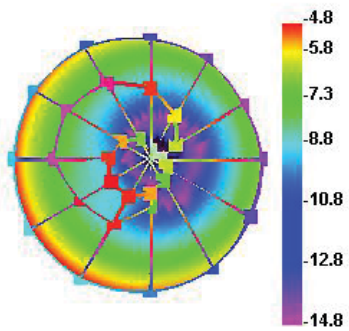
690.000MHz E1



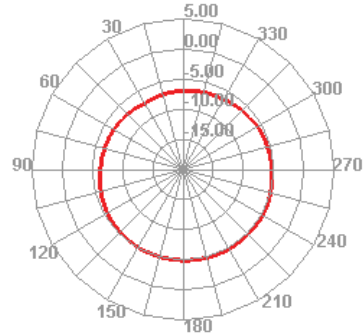
690.000MHz E2



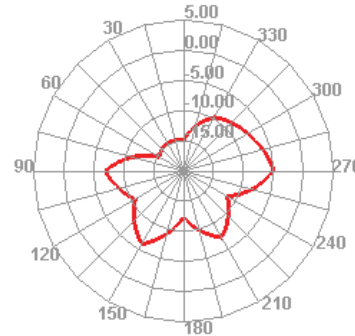
730.000MHz



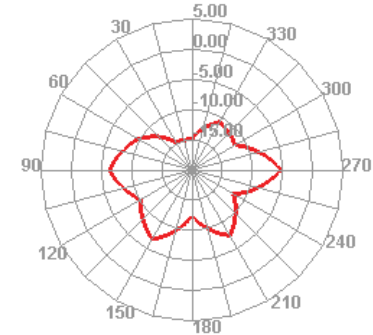
730.000MHz H



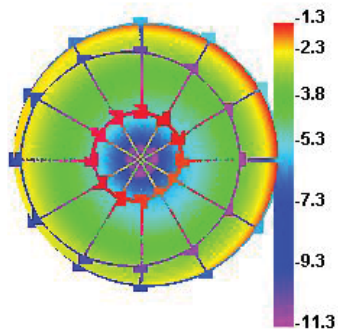
730.000MHz E1



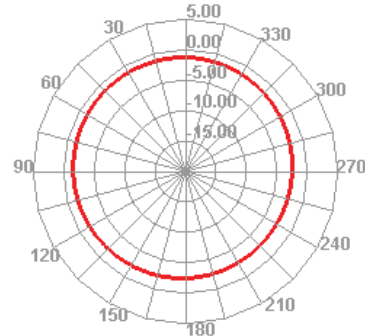
730.000MHz E2



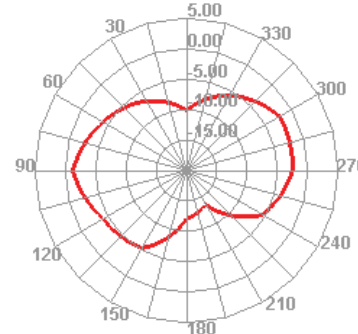
850.000MHz



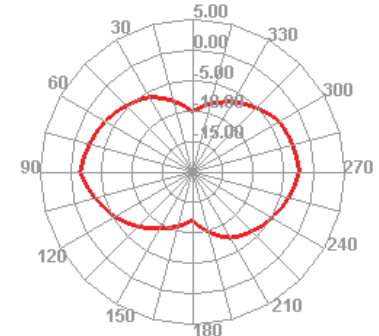
850.000MHz H



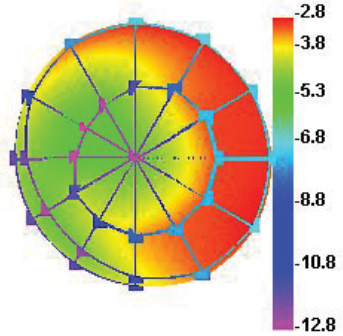
850.000MHz E1



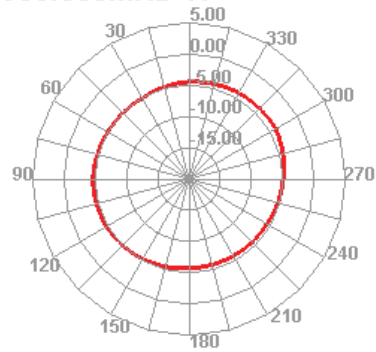
850.000MHz E2



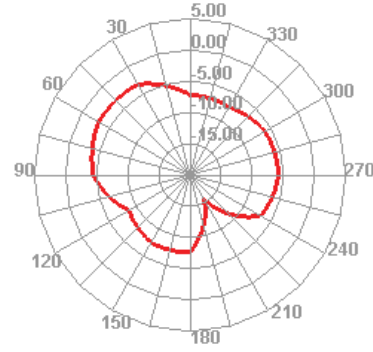
900.000MHz



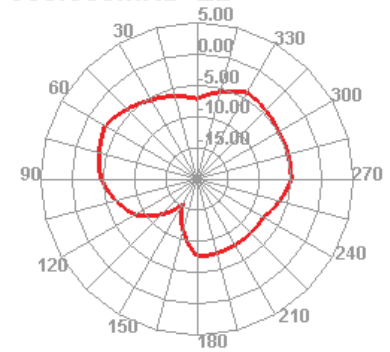
900.000MHz H



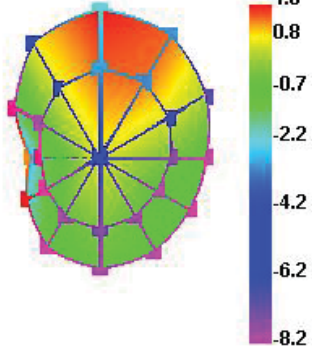
900.000MHz E1



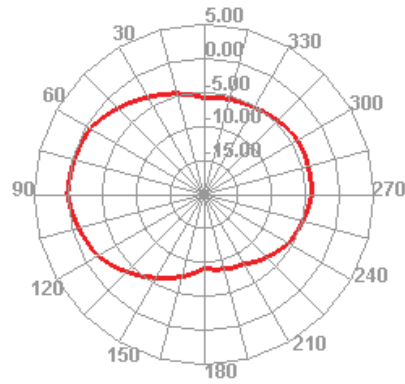
900.000MHz E2



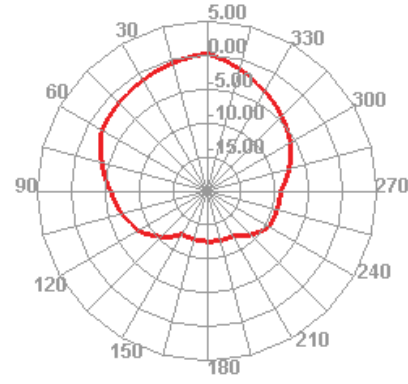
1710.000MHz



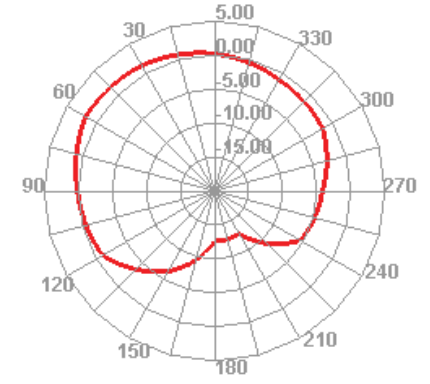
1710.000MHz H



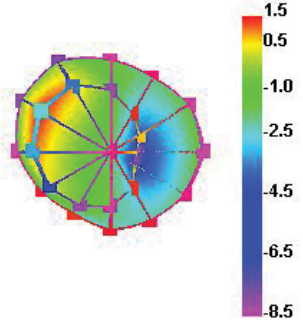
1710.000MHz E1



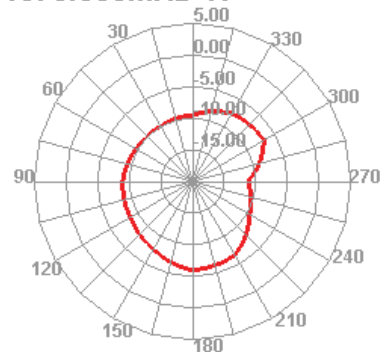
1710.000MHz E2



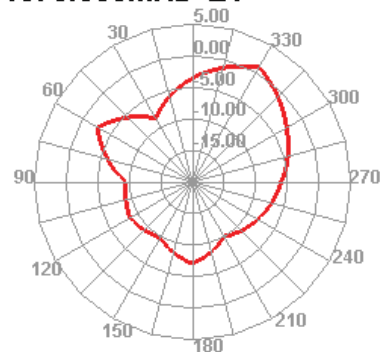
1870.000MHz



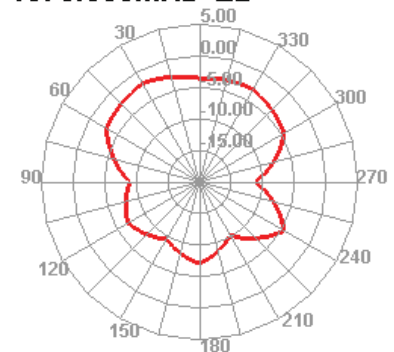
1870.000MHz H



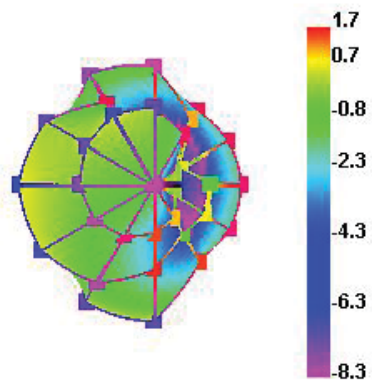
1870.000MHz E1



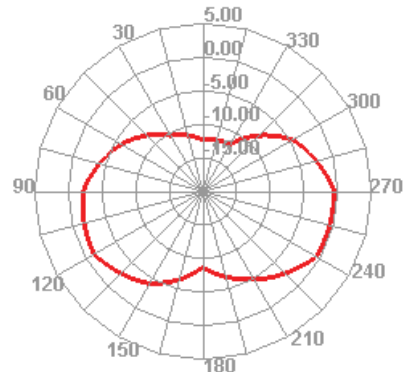
1870.000MHz E2



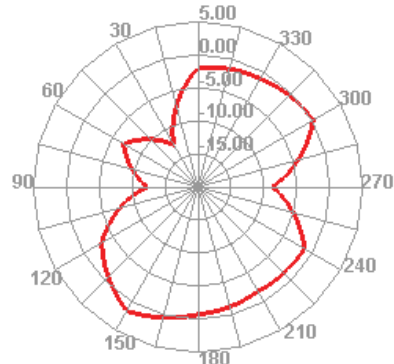
2040.000MHz



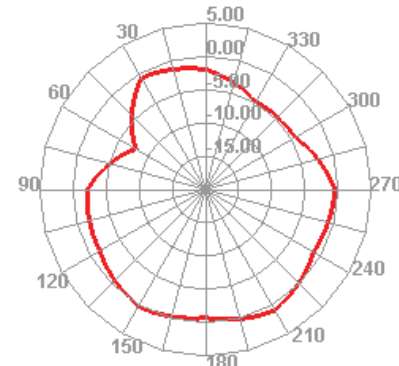
2040.000MHz H



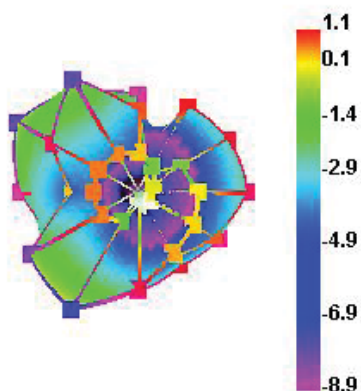
2040.000MHz E1



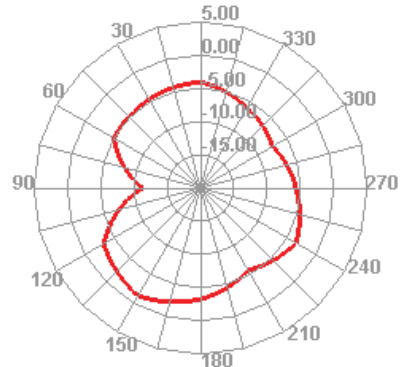
2040.000MHz E2



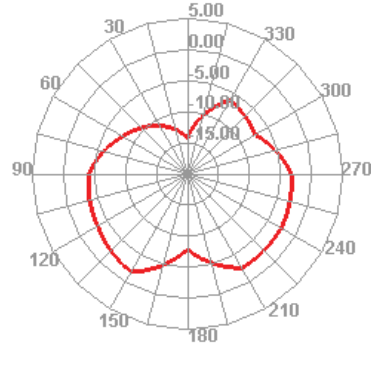
2550.000MHz



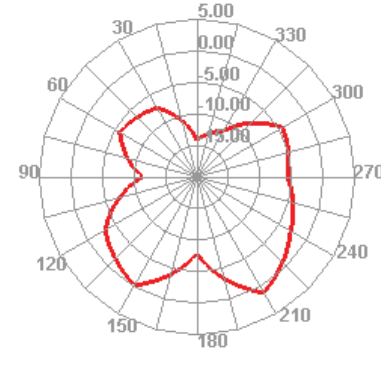
2550.000MHz H



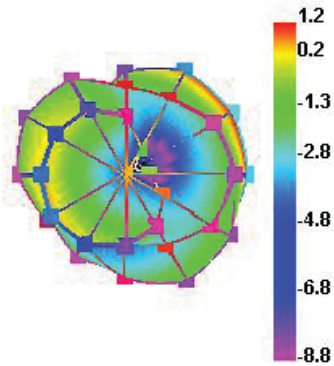
2550.000MHz E1



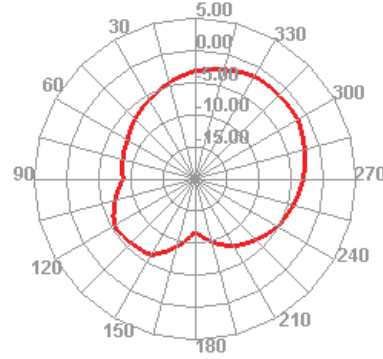
2550.000MHz E2



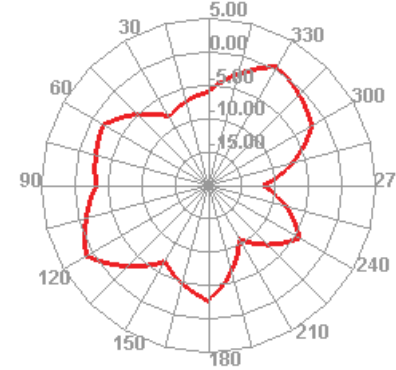
1575.000MHz



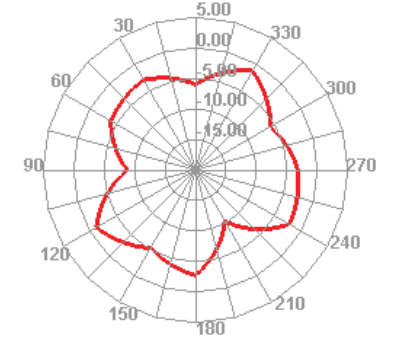
1575.000MHz H



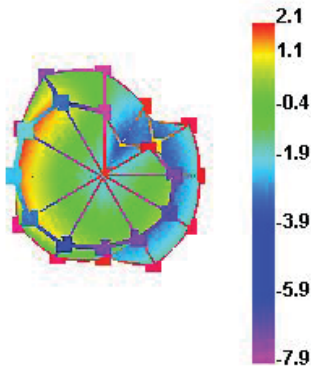
1575.000MHz E1



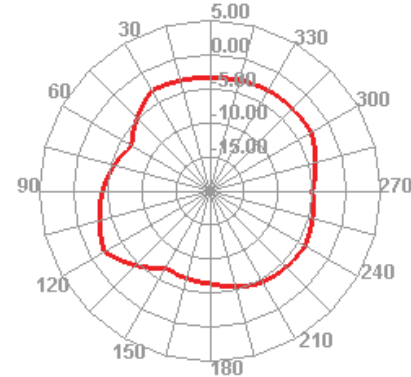
1575.000MHz E2



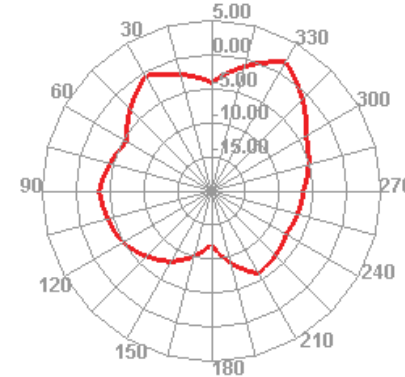
2450.000MHz



2450.000MHz H



2450.000MHz E1



2450.000MHz E2

