

Test Plot 1#:GSM 850_Head Left Cheek_Mid**DUT: Mobile Phone; Type: NEO 7; Serial: RDG200710002-SA-S1**

Communication System:Generic GSM ; Frequency: 836.6 MHz;Duty Cycle: 1:8

Medium parameters used: $f = 836.6$ MHz; $\sigma = 0.905$ S/m; $\epsilon_r = 41.532$; $\rho = 1000$ kg/m³

Phantom section: Left Section

DASY5 Configuration:

- Probe: EX3DV4 - SN7441; ConvF(10.33, 10.33, 10.33) @ 836.6 MHz; Calibrated: 2020/2/8
- Sensor-Surface: 1.4mm (Mechanical Surface Detection)
- Electronics: DAE3 Sn471; Calibrated: 2019/12/25
- Phantom: Twin SAM; Type: Twin SAM V5.0; Serial: TP:1412
- Measurement SW: DASY52, Version 52.10 (2); SEMCAD X Version 14.6.12 (7470)

Area Scan (41x81x1): Interpolated grid: dx=1.500 mm, dy=1.500 mm

Maximum value of SAR (interpolated) = 0.342 W/kg

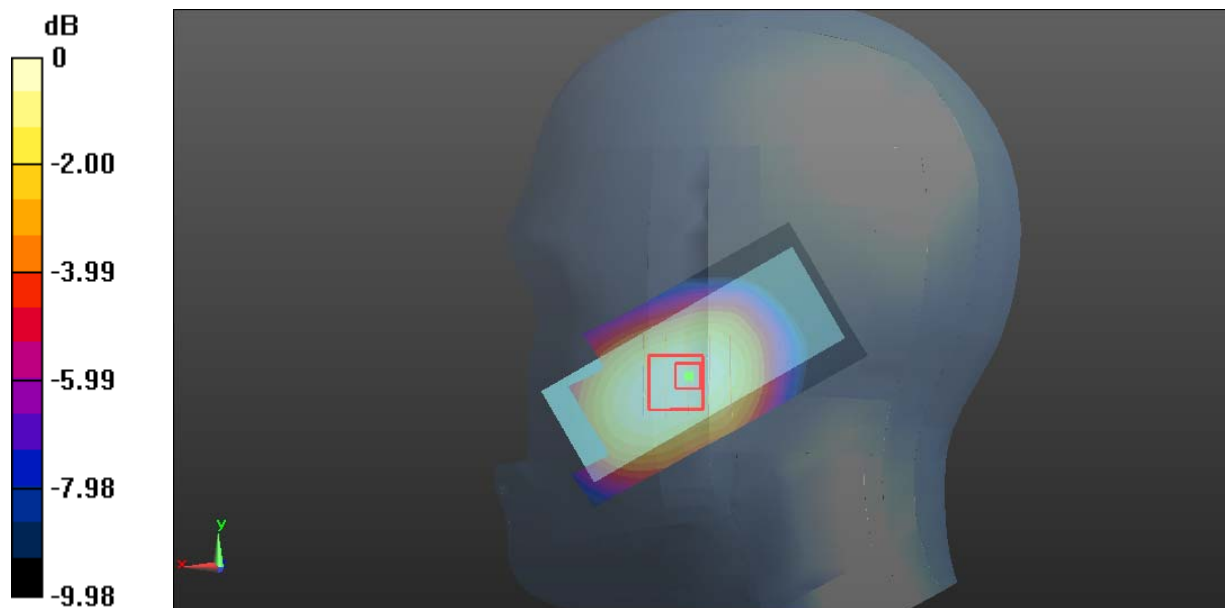
Zoom Scan (5x5x7)/Cube 0: Measurement grid: dx=8mm, dy=8mm, dz=5mm

Reference Value = 4.681 V/m; Power Drift = 0.10 dB

Peak SAR (extrapolated) = 0.368 W/kg

SAR(1 g) = 0.273 W/kg; SAR(10 g) = 0.198 W/kg

Maximum value of SAR (measured) = 0.332 W/kg



0 dB = 0.332 W/kg = -4.79 dBW/kg

Test Plot 2#:GSM 850_Head Left Tilt_Mid**DUT: Mobile Phone; Type: NEO 7; Serial: RDG200710002-SA-S1**

Communication System:Generic GSM ; Frequency: 836.6 MHz;Duty Cycle: 1:8

Medium parameters used: $f = 836.6$ MHz; $\sigma = 0.905$ S/m; $\epsilon_r = 41.532$; $\rho = 1000$ kg/m³

Phantom section: Left Section

DASY5 Configuration:

- Probe: EX3DV4 - SN7441; ConvF(10.33, 10.33, 10.33) @ 836.6 MHz; Calibrated: 2020/2/8
- Sensor-Surface: 1.4mm (Mechanical Surface Detection)
- Electronics: DAE3 Sn471; Calibrated: 2019/12/25
- Phantom: Twin SAM; Type: Twin SAM V5.0; Serial: TP:1412
- Measurement SW: DASY52, Version 52.10 (2); SEMCAD X Version 14.6.12 (7470)

Area Scan (41x91x1): Interpolated grid: dx=1.500 mm, dy=1.500 mm

Maximum value of SAR (interpolated) = 0.222 W/kg

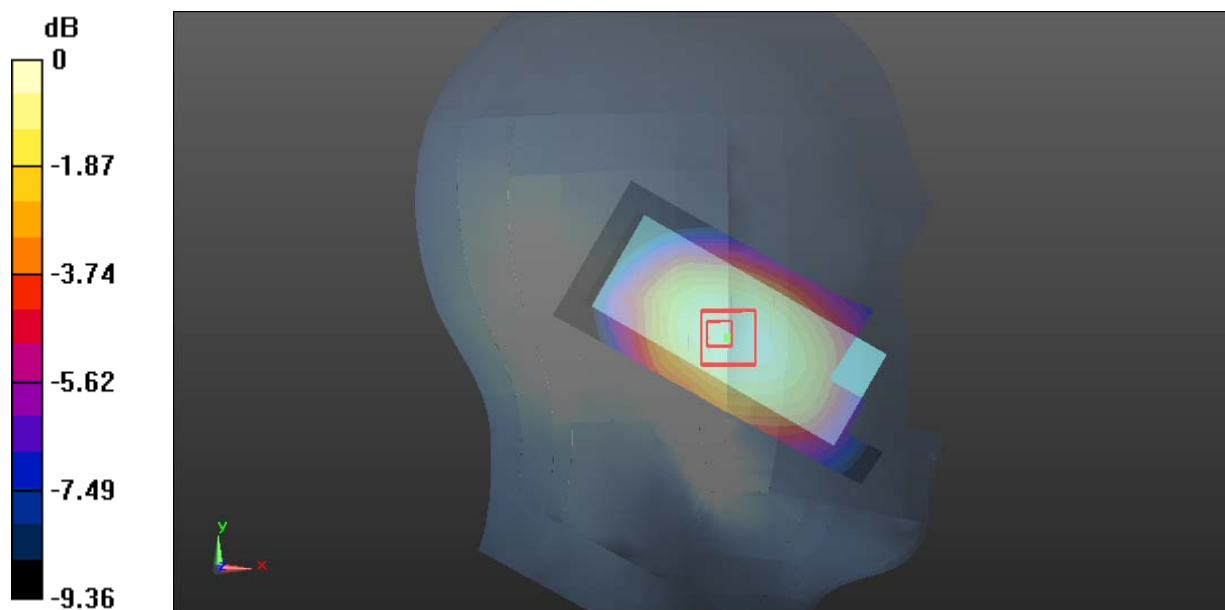
Zoom Scan (5x5x7)/Cube 0: Measurement grid: dx=8mm, dy=8mm, dz=5mm

Reference Value = 7.039 V/m; Power Drift = 0.01 dB

Peak SAR (extrapolated) = 0.250 W/kg

SAR(1 g) = 0.182 W/kg; SAR(10 g) = 0.132 W/kg

Maximum value of SAR (measured) = 0.223 W/kg



0 dB = 0.223 W/kg = -6.52 dBW/kg

Test Plot 3#:GSM 850_Head Right Cheek_Mid**DUT: Mobile Phone; Type: NEO 7; Serial: RDG200710002-SA-S1**

Communication System: Generic GSM ; Frequency: 836.6 MHz;Duty Cycle: 1:8

Medium parameters used: $f = 836.6$ MHz; $\sigma = 0.905$ S/m; $\epsilon_r = 41.532$; $\rho = 1000$ kg/m³

Phantom section: Right Section

DASY5 Configuration:

- Probe: EX3DV4 - SN7441; ConvF(10.33, 10.33, 10.33) @ 836.6 MHz; Calibrated: 2020/2/8
- Sensor-Surface: 1.4mm (Mechanical Surface Detection)
- Electronics: DAE3 Sn471; Calibrated: 2019/12/25
- Phantom: Twin SAM; Type: Twin SAM V5.0; Serial: TP:1412
- Measurement SW: DASY52, Version 52.10 (2); SEMCAD X Version 14.6.12 (7470)

Area Scan (41x81x1): Interpolated grid: dx=1.500 mm, dy=1.500 mm

Maximum value of SAR (interpolated) = 0.368 W/kg

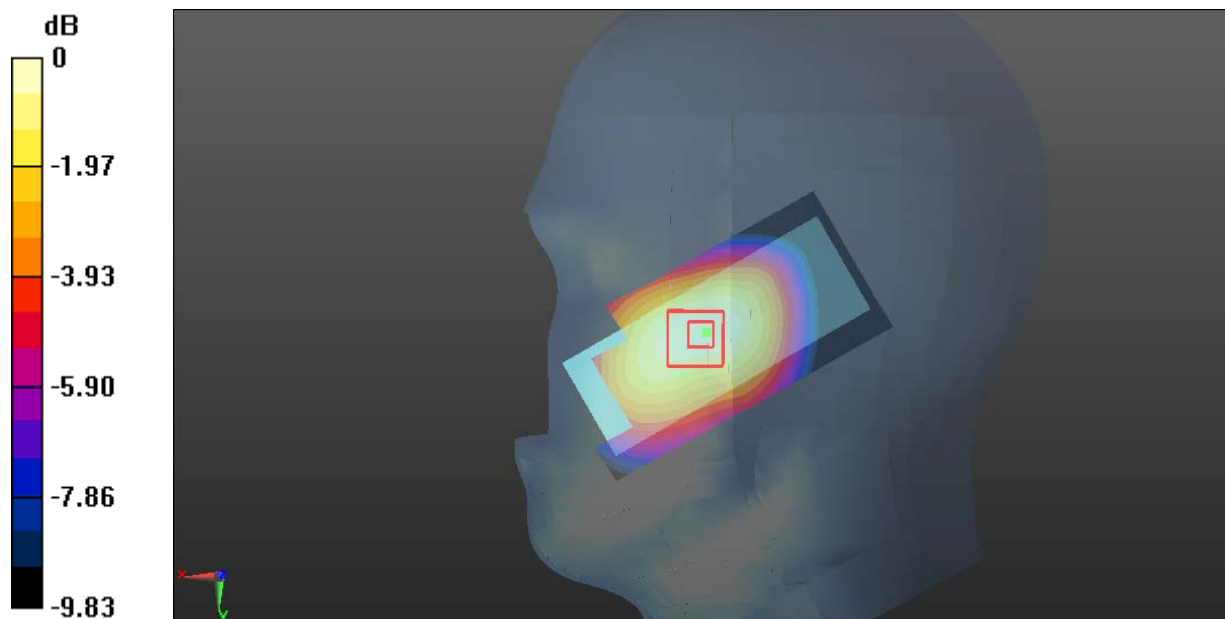
Zoom Scan (5x5x7)/Cube 0: Measurement grid: dx=8mm, dy=8mm, dz=5mm

Reference Value = 5.324 V/m; Power Drift = 0.13 dB

Peak SAR (extrapolated) = 0.408 W/kg

SAR(1 g) = 0.294 W/kg; SAR(10 g) = 0.208 W/kg

Maximum value of SAR (measured) = 0.372 W/kg



0 dB = 0.372 W/kg = -4.29 dBW/kg

Test Plot 4#:GSM 850_Head Right Tilt_Mid**DUT: Mobile Phone; Type: NEO 7; Serial: RDG200710002-SA-S1**

Communication System:Generic GSM ; Frequency: 836.6 MHz;Duty Cycle: 1:8

Medium parameters used: $f = 836.6$ MHz; $\sigma = 0.905$ S/m; $\epsilon_r = 41.532$; $\rho = 1000$ kg/m³

Phantom section: Right Section

DASY5 Configuration:

- Probe: EX3DV4 - SN7441; ConvF(10.33, 10.33, 10.33) @ 836.6 MHz; Calibrated: 2020/2/8
- Sensor-Surface: 1.4mm (Mechanical Surface Detection)
- Electronics: DAE3 Sn471; Calibrated: 2019/12/25
- Phantom: Twin SAM; Type: Twin SAM V5.0; Serial: TP:1412
- Measurement SW: DASY52, Version 52.10 (2); SEMCAD X Version 14.6.12 (7470)

Area Scan (41x91x1): Interpolated grid: dx=1.500 mm, dy=1.500 mm

Maximum value of SAR (interpolated) = 0.221 W/kg

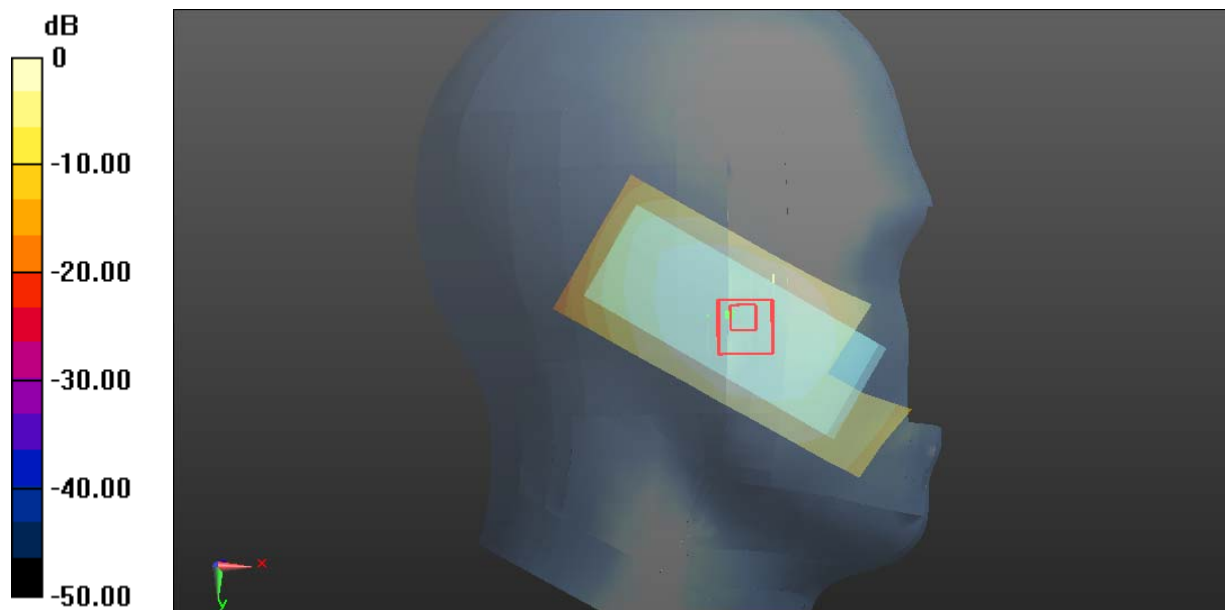
Zoom Scan (5x5x7)/Cube 0: Measurement grid: dx=8mm, dy=8mm, dz=5mm

Reference Value = 7.496 V/m; Power Drift = 0.15 dB

Peak SAR (extrapolated) = 0.324 W/kg

SAR(1 g) = 0.177 W/kg; SAR(10 g) = 0.123 W/kg

Maximum value of SAR (measured) = 0.219 W/kg



0 dB = 0.219 W/kg = -6.60 dBW/kg

Test Plot 5#:GSM 850_Body Worn Back_Mid**DUT: Mobile Phone; Type: NEO 7; Serial: RDG200710002-SA-S1**

Communication System:Generic GSM ; Frequency: 836.6 MHz;Duty Cycle: 1:8

Medium parameters used: $f = 836.6$ MHz; $\sigma = 0.905$ S/m; $\epsilon_r = 41.532$; $\rho = 1000$ kg/m³

Phantom section: Flat Section

DASY5 Configuration:

- Probe: EX3DV4 - SN7441; ConvF(10.33, 10.33, 10.33) @ 836.6 MHz; Calibrated: 2020/2/8
- Sensor-Surface: 1.4mm (Mechanical Surface Detection)
- Electronics: DAE3 Sn471; Calibrated: 2019/12/25
- Phantom: Twin SAM; Type: Twin SAM V5.0; Serial: TP:1412
- Measurement SW: DASY52, Version 52.10 (2); SEMCAD X Version 14.6.12 (7470)

Area Scan (41x91x1): Interpolated grid: dx=1.500 mm, dy=1.500 mm

Maximum value of SAR (interpolated) = 1.41 W/kg

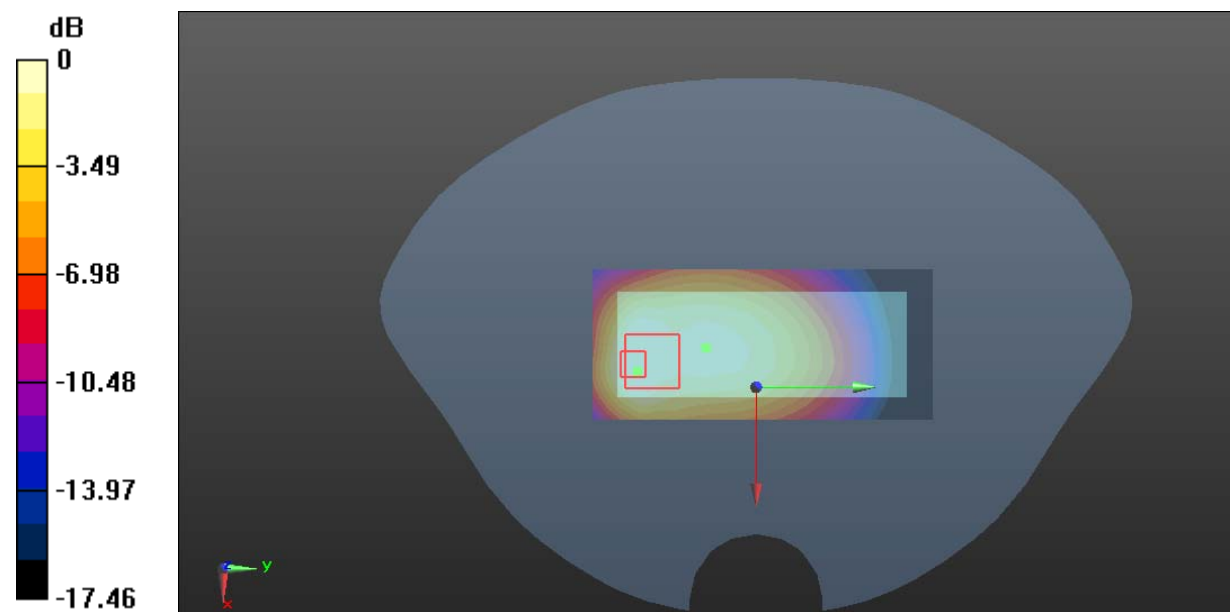
Zoom Scan (5x5x7)/Cube 0: Measurement grid: dx=8mm, dy=8mm, dz=5mm

Reference Value = 26.54 V/m; Power Drift = -0.12 dB

Peak SAR (extrapolated) = 1.55 W/kg

SAR(1 g) = 0.737 W/kg; SAR(10 g) = 0.464 W/kg

Maximum value of SAR (measured) = 1.04 W/kg



0 dB = 1.04 W/kg = 0.17 dBW/kg

Test Plot 6#:GSM 850_Body Worn Front_Mid**DUT: Mobile Phone; Type: NEO 7; Serial: RDG200710002-SA-S1**

Communication System:Generic GSM ; Frequency: 836.6 MHz;Duty Cycle: 1:8

Medium parameters used: $f = 836.6$ MHz; $\sigma = 0.905$ S/m; $\epsilon_r = 41.532$; $\rho = 1000$ kg/m³

Phantom section: Flat Section

DASY5 Configuration:

- Probe: EX3DV4 - SN7441; ConvF(10.33, 10.33, 10.33) @ 836.6 MHz; Calibrated: 2020/2/8
- Sensor-Surface: 1.4mm (Mechanical Surface Detection)
- Electronics: DAE3 Sn471; Calibrated: 2019/12/25
- Phantom: Twin SAM; Type: Twin SAM V5.0; Serial: TP:1412
- Measurement SW: DASY52, Version 52.10 (2); SEMCAD X Version 14.6.12 (7470)

Area Scan (41x91x1): Interpolated grid: dx=1.500 mm, dy=1.500 mm

Maximum value of SAR (interpolated) = 0.346 W/kg

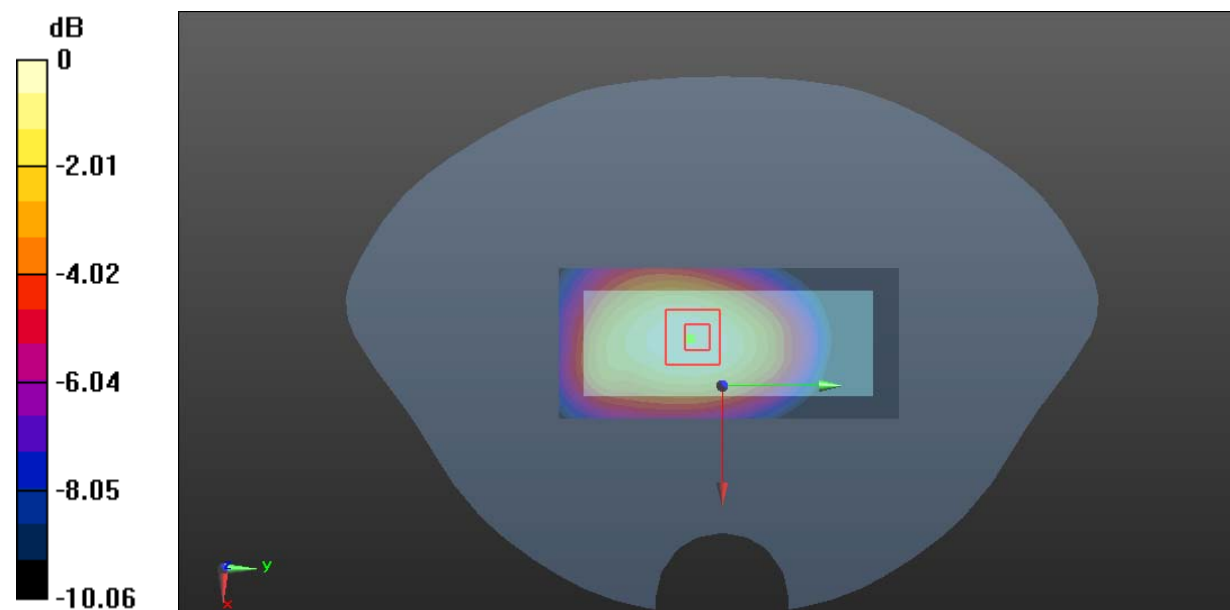
Zoom Scan (5x5x7)/Cube 0: Measurement grid: dx=8mm, dy=8mm, dz=5mm

Reference Value = 17.28 V/m; Power Drift = 0.02 dB

Peak SAR (extrapolated) = 0.394 W/kg

SAR(1 g) = 0.273 W/kg; SAR(10 g) = 0.189 W/kg

Maximum value of SAR (measured) = 0.348 W/kg



0 dB = 0.348 W/kg = -4.58 dBW/kg

Test Plot 7#: GSM 850_Body Back_Low**DUT: Mobile Phone; Type: NEO 7; Serial: RDG200710002-SA-S1**

Communication System: Generic GPRS-3 slots; Frequency: 824.2 MHz; Duty Cycle: 1:2.66

Medium parameters used: $f = 824.2$ MHz; $\sigma = 0.896$ S/m; $\epsilon_r = 41.567$; $\rho = 1000$ kg/m³

Phantom section: Flat Section

DASY5 Configuration:

- Probe: EX3DV4 - SN7441; ConvF(10.33, 10.33, 10.33) @ 824.2 MHz; Calibrated: 2020/2/8
- Sensor-Surface: 1.4mm (Mechanical Surface Detection)
- Electronics: DAE3 Sn471; Calibrated: 2019/12/25
- Phantom: Twin SAM; Type: Twin SAM V5.0; Serial: TP:1412
- Measurement SW: DASY52, Version 52.10 (2); SEMCAD X Version 14.6.12 (7470)

Area Scan (41x91x1): Interpolated grid: dx=1.500 mm, dy=1.500 mm

Maximum value of SAR (interpolated) = 1.27 W/kg

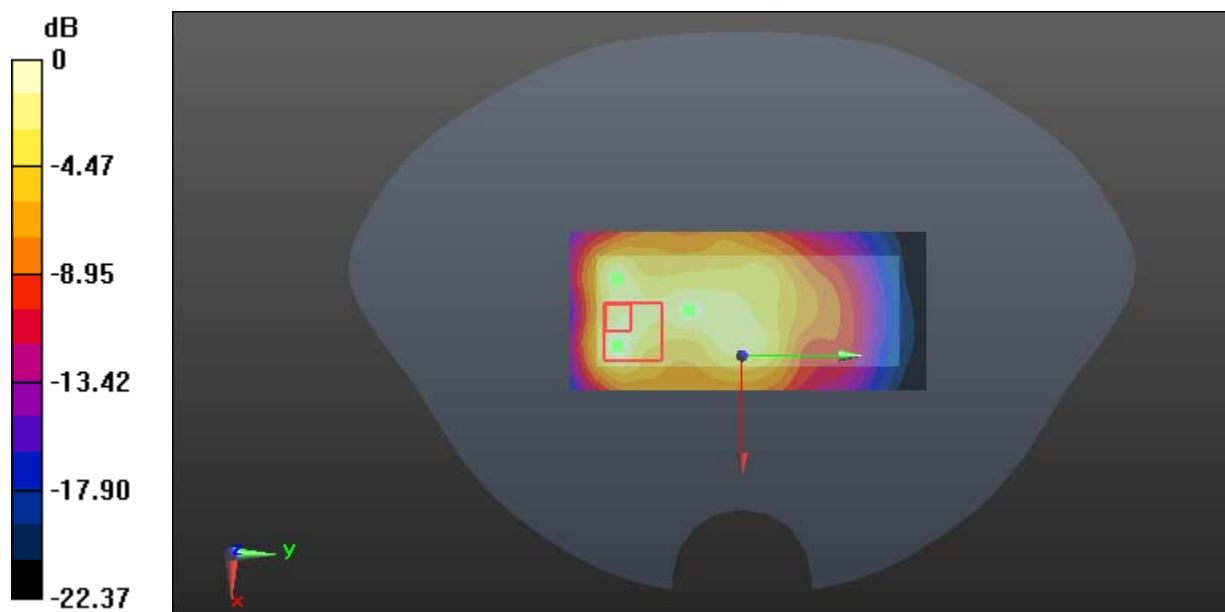
Zoom Scan (5x5x7)/Cube 0: Measurement grid: dx=8mm, dy=8mm, dz=5mm

Reference Value = 26.29 V/m; Power Drift = 0.17 dB

Peak SAR (extrapolated) = 1.74 W/kg

SAR(1 g) = 0.803 W/kg; SAR(10 g) = 0.441 W/kg

Maximum value of SAR (measured) = 1.32 W/kg



0 dB = 1.32 W/kg = 1.21 dBW/kg

Test Plot 8#:GSM 850_Body Back_Mid**DUT: Mobile Phone; Type: NEO 7; Serial: RDG200710002-SA-S1**

Communication System:Generic GPRS-3 slots ; Frequency: 836.6 MHz;Duty Cycle: 1:2.66

Medium parameters used: $f = 836.6$ MHz; $\sigma = 0.905$ S/m; $\epsilon_r = 41.532$; $\rho = 1000$ kg/m³

Phantom section: Flat Section

DASY5 Configuration:

- Probe: EX3DV4 - SN7441; ConvF(10.33, 10.33, 10.33) @ 836.6 MHz; Calibrated: 2020/2/8
- Sensor-Surface: 1.4mm (Mechanical Surface Detection)
- Electronics: DAE3 Sn471; Calibrated: 2019/12/25
- Phantom: Twin SAM; Type: Twin SAM V5.0; Serial: TP:1412
- Measurement SW: DASY52, Version 52.10 (2); SEMCAD X Version 14.6.12 (7470)

Area Scan (41x91x1): Interpolated grid: dx=1.500 mm, dy=1.500 mm

Maximum value of SAR (interpolated) = 1.64 W/kg

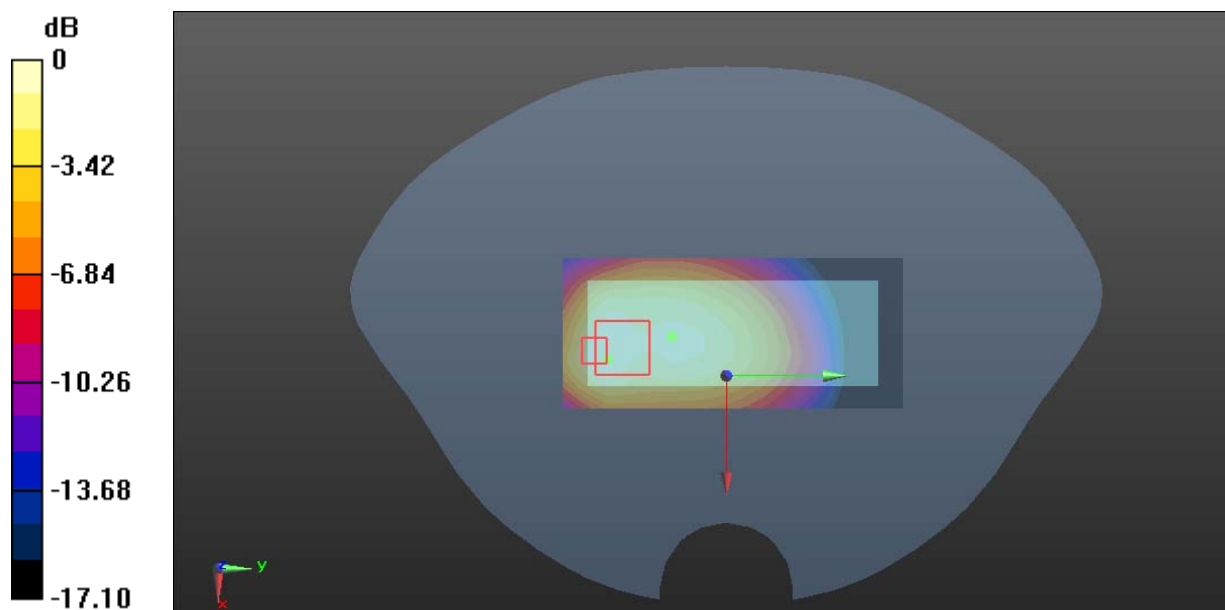
Zoom Scan (5x5x7)/Cube 0: Measurement grid: dx=8mm, dy=8mm, dz=5mm

Reference Value = 29.37 V/m; Power Drift = -0.19 dB

Peak SAR (extrapolated) = 2.08 W/kg

SAR(1 g) = 0.979 W/kg; SAR(10 g) = 0.633 W/kg

Maximum value of SAR (measured) = 1.59 W/kg



0 dB = 1.59 W/kg = 2.01 dBW/kg

Test Plot 9#: GSM 850_Body Back_High**DUT: Mobile Phone; Type: NEO 7; Serial: RDG200710002-SA-S1**

Communication System: Generic GPRS-3 slots; Frequency: 848.8 MHz; Duty Cycle: 1:2.66

Medium parameters used: $f = 848.8$ MHz; $\sigma = 0.912$ S/m; $\epsilon_r = 41.498$; $\rho = 1000$ kg/m³

Phantom section: Flat Section

DASY5 Configuration:

- Probe: EX3DV4 - SN7441; ConvF(10.33, 10.33, 10.33) @ 848.8 MHz; Calibrated: 2020/2/8
- Sensor-Surface: 1.4mm (Mechanical Surface Detection)
- Electronics: DAE3 Sn471; Calibrated: 2019/12/25
- Phantom: Twin SAM; Type: Twin SAM V5.0; Serial: TP:1412
- Measurement SW: DASY52, Version 52.10 (2); SEMCAD X Version 14.6.12 (7470)

Area Scan (41x91x1): Interpolated grid: dx=1.500 mm, dy=1.500 mm

Maximum value of SAR (interpolated) = 1.34 W/kg

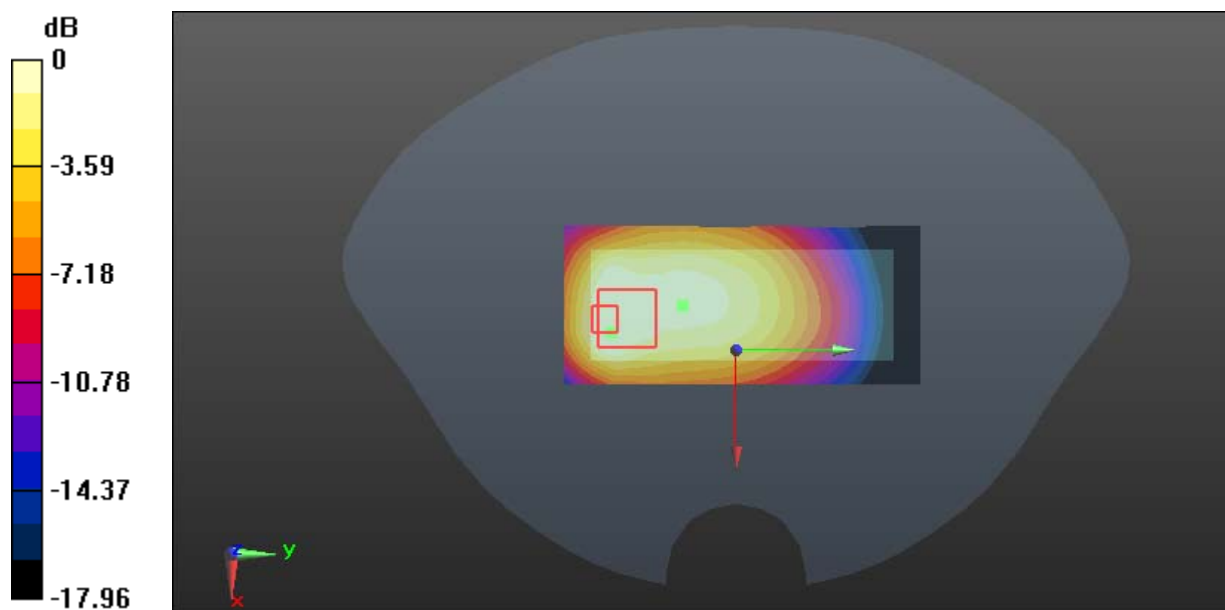
Zoom Scan (5x5x7)/Cube 0: Measurement grid: dx=8mm, dy=8mm, dz=5mm

Reference Value = 27.79 V/m; Power Drift = -0.11 dB

Peak SAR (extrapolated) = 1.50 W/kg

SAR(1 g) = 0.741 W/kg; SAR(10 g) = 0.479 W/kg

Maximum value of SAR (measured) = 1.07 W/kg



0 dB = 1.07 W/kg = 0.29 dBW/kg

Test Plot 10#:GSM 850_Body Front_Mid**DUT: Mobile Phone; Type: NEO 7; Serial: RDG200710002-SA-S1**

Communication System:Generic GPRS-3 slots ; Frequency: 836.6 MHz;Duty Cycle: 1:2.66

Medium parameters used: $f = 836.6$ MHz; $\sigma = 0.905$ S/m; $\epsilon_r = 41.532$; $\rho = 1000$ kg/m³

Phantom section: Flat Section

DASY5 Configuration:

- Probe: EX3DV4 - SN7441; ConvF(10.33, 10.33, 10.33) @ 836.6 MHz; Calibrated: 2020/2/8
- Sensor-Surface: 1.4mm (Mechanical Surface Detection)
- Electronics: DAE3 Sn471; Calibrated: 2019/12/25
- Phantom: Twin SAM; Type: Twin SAM V5.0; Serial: TP:1412
- Measurement SW: DASY52, Version 52.10 (2); SEMCAD X Version 14.6.12 (7470)

Area Scan (41x91x1): Interpolated grid: dx=1.500 mm, dy=1.500 mm

Maximum value of SAR (interpolated) = 0.573 W/kg

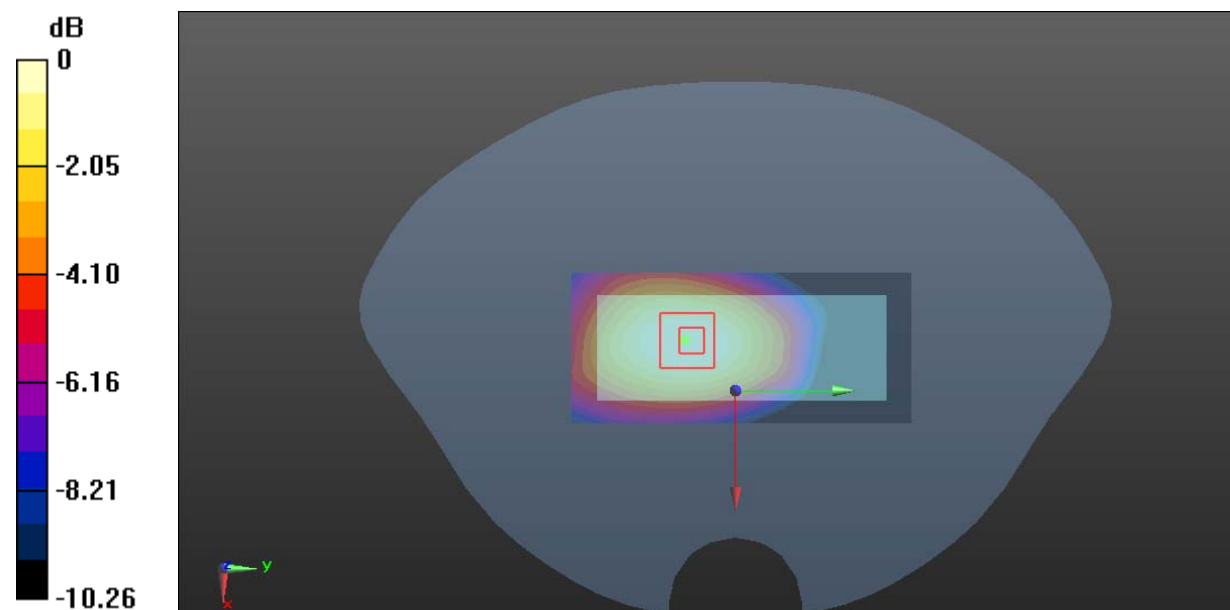
Zoom Scan (5x5x7)/Cube 0: Measurement grid: dx=8mm, dy=8mm, dz=5mm

Reference Value = 20.24 V/m; Power Drift = -0.08 dB

Peak SAR (extrapolated) = 0.646 W/kg

SAR(1 g) = 0.444 W/kg; SAR(10 g) = 0.305 W/kg

Maximum value of SAR (measured) = 0.574 W/kg



0 dB = 0.574 W/kg = -2.41 dBW/kg

Test Plot 11#:GSM 850_Body Bottom_Mid**DUT: Mobile Phone; Type: NEO 7; Serial: RDG200710002-SA-S1**

Communication System:Generic GPRS-3 slots ; Frequency: 836.6 MHz;Duty Cycle: 1:2.66

Medium parameters used: $f = 836.6$ MHz; $\sigma = 0.905$ S/m; $\epsilon_r = 41.532$; $\rho = 1000$ kg/m³

Phantom section: Flat Section

DASY5 Configuration:

- Probe: EX3DV4 - SN7441; ConvF(10.33, 10.33, 10.33) @ 836.6 MHz; Calibrated: 2020/2/8
- Sensor-Surface: 1.4mm (Mechanical Surface Detection)
- Electronics: DAE3 Sn471; Calibrated: 2019/12/25
- Phantom: Twin SAM; Type: Twin SAM V5.0; Serial: TP:1412
- Measurement SW: DASY52, Version 52.10 (2); SEMCAD X Version 14.6.12 (7470)

Area Scan (41x41x1): Interpolated grid: dx=1.500 mm, dy=1.500 mm

Maximum value of SAR (interpolated) = 0.141 W/kg

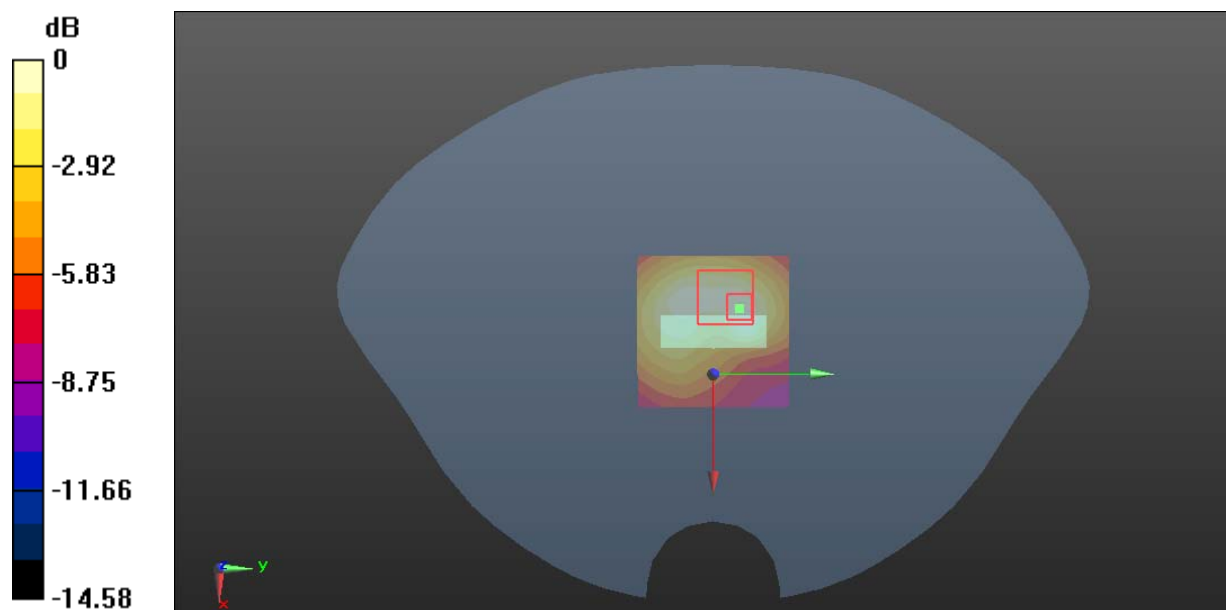
Zoom Scan (5x5x7)/Cube 0: Measurement grid: dx=8mm, dy=8mm, dz=5mm

Reference Value = 7.650 V/m; Power Drift = -0.02 dB

Peak SAR (extrapolated) = 0.211 W/kg

SAR(1 g) = 0.084 W/kg; SAR(10 g) = 0.048 W/kg

Maximum value of SAR (measured) = 0.150 W/kg



0 dB = 0.150 W/kg = -8.24 dBW/kg

Test Plot 12#:PCS 1900_Head Left Cheek_Mid**DUT: Mobile Phone; Type: NEO 7; Serial: RDG200710002-SA-S1**

Communication System:Generic GPRS-3 slots ; Frequency: 1880 MHz;Duty Cycle: 1:2.66

Medium parameters used: $f = 1880$ MHz; $\sigma = 1.398$ S/m; $\epsilon_r = 40.094$; $\rho = 1000$ kg/m³

Phantom section: Left Section

DASY5 Configuration:

- Probe: EX3DV4 - SN7441; ConvF(8.05, 8.05, 8.05) @ 1880 MHz; Calibrated: 2020/2/8
- Sensor-Surface: 1.4mm (Mechanical Surface Detection)
- Electronics: DAE3 Sn471; Calibrated: 2019/12/25
- Phantom: Twin SAM; Type: Twin SAM V5.0; Serial: TP:1412
- Measurement SW: DASY52, Version 52.10 (2); SEMCAD X Version 14.6.12 (7470)

Area Scan (41x81x1): Interpolated grid: dx=1.500 mm, dy=1.500 mm

Maximum value of SAR (interpolated) = 0.121 W/kg

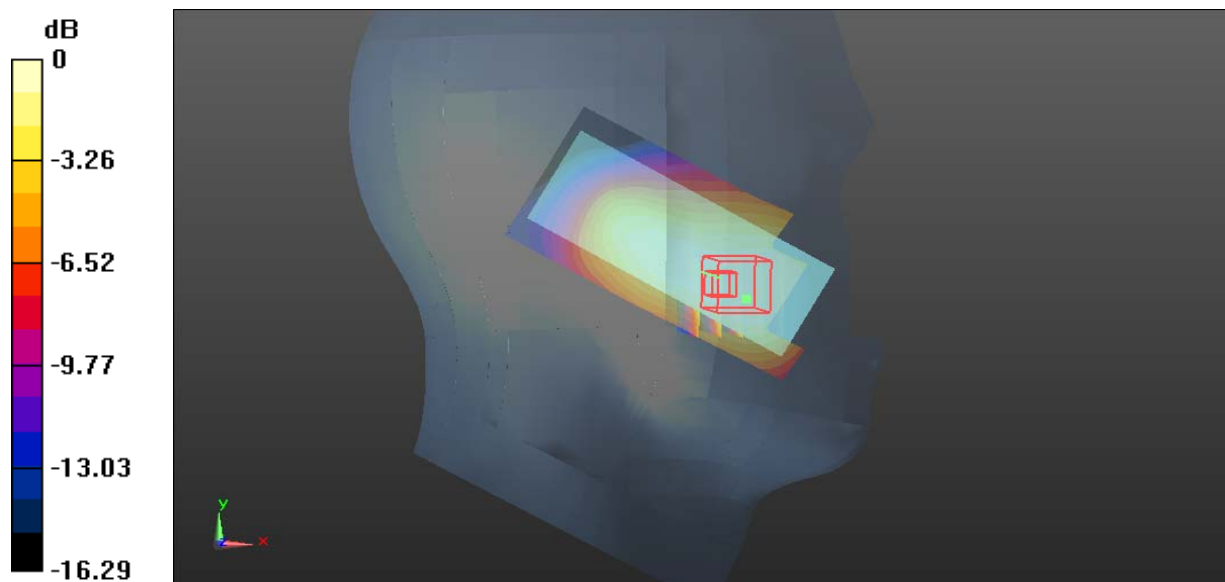
Zoom Scan (5x5x7)/Cube 0: Measurement grid: dx=8mm, dy=8mm, dz=5mm

Reference Value = 1.998 V/m; Power Drift = 0.19 dB

Peak SAR (extrapolated) = 0.142 W/kg

SAR(1 g) = 0.078 W/kg; SAR(10 g) = 0.047 W/kg

Maximum value of SAR (measured) = 0.117 W/kg



0 dB = 0.117 W/kg = -9.32 dBW/kg

Test Plot 13#:PCS 1900_Head Left Tilt_Mid**DUT: Mobile Phone; Type: NEO 7; Serial: RDG200710002-SA-S1**

Communication System:Generic GPRS-3 slots ; Frequency: 1880 MHz;Duty Cycle: 1:2.66

Medium parameters used: $f = 1880$ MHz; $\sigma = 1.398$ S/m; $\epsilon_r = 40.094$; $\rho = 1000$ kg/m³

Phantom section: Left Section

DASY5 Configuration:

- Probe: EX3DV4 - SN7441; ConvF(8.05, 8.05, 8.05) @ 1880 MHz; Calibrated: 2020/2/8
- Sensor-Surface: 1.4mm (Mechanical Surface Detection)
- Electronics: DAE3 Sn471; Calibrated: 2019/12/25
- Phantom: Twin SAM; Type: Twin SAM V5.0; Serial: TP:1412
- Measurement SW: DASY52, Version 52.10 (2); SEMCAD X Version 14.6.12 (7470)

Area Scan (41x81x1): Interpolated grid: dx=1.500 mm, dy=1.500 mm

Maximum value of SAR (interpolated) = 0.0661 W/kg

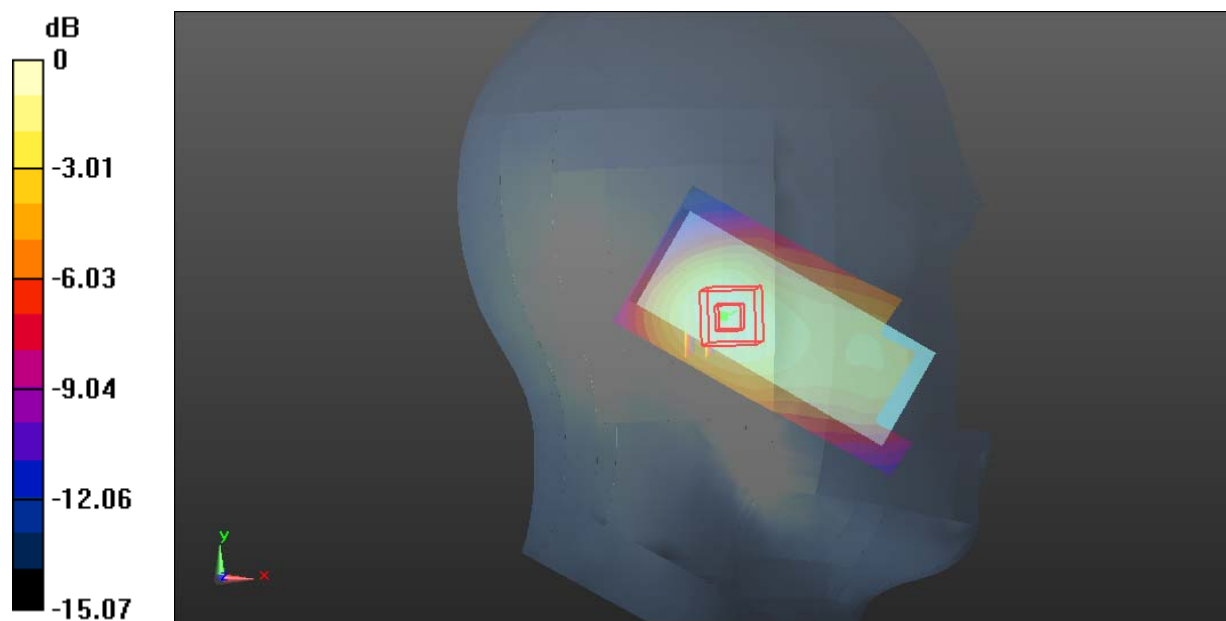
Zoom Scan (5x5x7)/Cube 0: Measurement grid: dx=8mm, dy=8mm, dz=5mm

Reference Value = 3.261 V/m; Power Drift = 0.11 dB

Peak SAR (extrapolated) = 0.0740 W/kg

SAR(1 g) = 0.042 W/kg; SAR(10 g) = 0.024 W/kg

Maximum value of SAR (measured) = 0.0619 W/kg



0 dB = 0.0619 W/kg = -12.08 dBW/kg

Test Plot 14#:PCS 1900_Head Right Cheek_Mid**DUT: Mobile Phone; Type: NEO 7; Serial: RDG200710002-SA-S1**

Communication System:Generic GPRS-3 slots ; Frequency: 1880 MHz;Duty Cycle: 1:2.66

Medium parameters used: $f = 1880$ MHz; $\sigma = 1.398$ S/m; $\epsilon_r = 40.094$; $\rho = 1000$ kg/m³

Phantom section: Right Section

DASY5 Configuration:

- Probe: EX3DV4 - SN7441; ConvF(8.05, 8.05, 8.05) @ 1880 MHz; Calibrated: 2020/2/8
- Sensor-Surface: 1.4mm (Mechanical Surface Detection)
- Electronics: DAE3 Sn471; Calibrated: 2019/12/25
- Phantom: Twin SAM; Type: Twin SAM V5.0; Serial: TP:1412
- Measurement SW: DASY52, Version 52.10 (2); SEMCAD X Version 14.6.12 (7470)

Area Scan (41x81x1): Interpolated grid: dx=1.500 mm, dy=1.500 mm

Maximum value of SAR (interpolated) = 0.145 W/kg

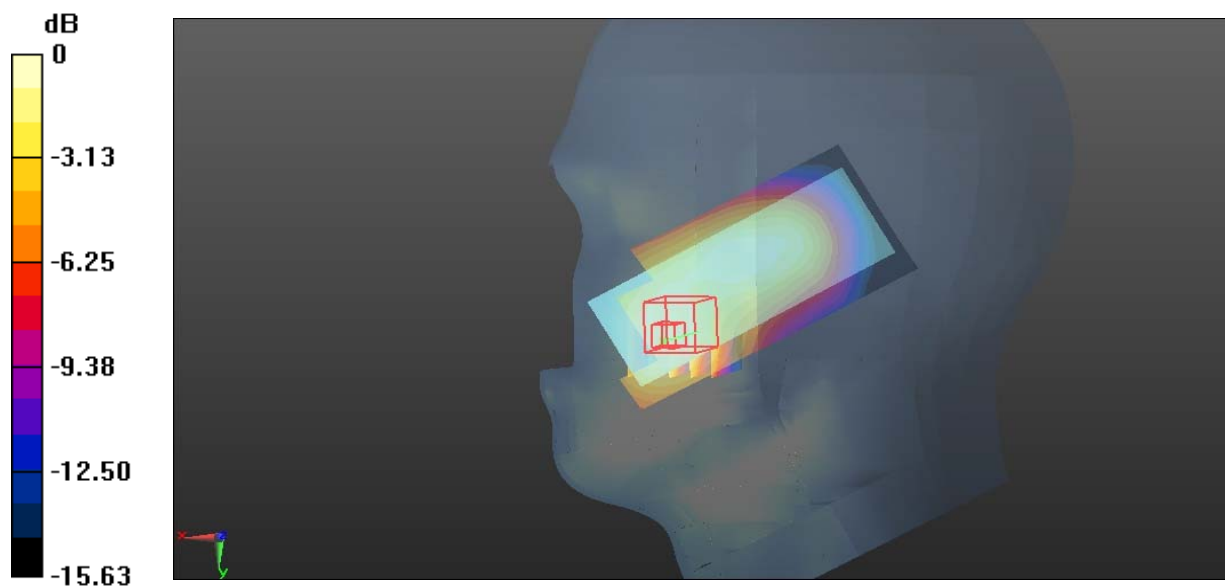
Zoom Scan (5x5x7)/Cube 0: Measurement grid: dx=8mm, dy=8mm, dz=5mm

Reference Value = 2.375 V/m; Power Drift = 0.16 dB

Peak SAR (extrapolated) = 0.162 W/kg

SAR(1 g) = 0.090 W/kg; SAR(10 g) = 0.053 W/kg

Maximum value of SAR (measured) = 0.133 W/kg



0 dB = 0.133 W/kg = -8.76 dBW/kg

Test Plot 15#:PCS 1900_Head RightTilt_Mid**DUT: Mobile Phone; Type: NEO 7; Serial: RDG200710002-SA-S1**

Communication System: Generic GPRS-3 slots; Frequency: 1880 MHz;Duty Cycle: 1:2.66

Medium parameters used: $f = 1880$ MHz; $\sigma = 1.398$ S/m; $\epsilon_r = 40.094$; $\rho = 1000$ kg/m³

Phantom section: Right Section

DASY5 Configuration:

- Probe: EX3DV4 - SN7441; ConvF(8.05, 8.05, 8.05) @ 1880 MHz; Calibrated: 2020/2/8
- Sensor-Surface: 1.4mm (Mechanical Surface Detection)
- Electronics: DAE3 Sn471; Calibrated: 2019/12/25
- Phantom: Twin SAM; Type: Twin SAM V5.0; Serial: TP:1412
- Measurement SW: DASY52, Version 52.10 (2); SEMCAD X Version 14.6.12 (7470)

Area Scan (41x81x1): Interpolated grid: dx=1.500 mm, dy=1.500 mm

Maximum value of SAR (interpolated) = 0.0882 W/kg

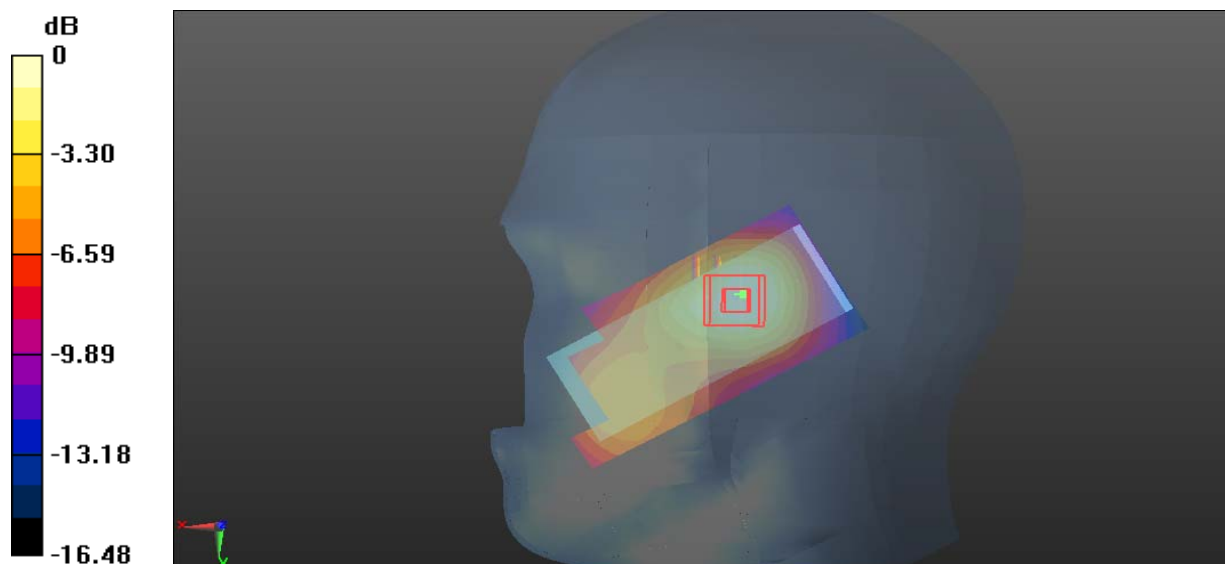
Zoom Scan (5x5x7)/Cube 0: Measurement grid: dx=8mm, dy=8mm, dz=5mm

Reference Value = 3.776 V/m; Power Drift = 0.18 dB

Peak SAR (extrapolated) = 0.108 W/kg

SAR(1 g) = 0.060 W/kg; SAR(10 g) = 0.034 W/kg

Maximum value of SAR (measured) = 0.0891 W/kg



0 dB = 0.0891 W/kg = -10.50 dBW/kg

Test Plot 16#:PCS 1900_Body Worn Back_Mid**DUT: Mobile Phone; Type: NEO 7; Serial: RDG200710002-SA-S1**

Communication System:Generic GSM ; Frequency: 1880 MHz;Duty Cycle: 1:8

Medium parameters used: $f = 1880$ MHz; $\sigma = 1.398$ S/m; $\epsilon_r = 40.094$; $\rho = 1000$ kg/m³

Phantom section: Flat Section

DASY5 Configuration:

- Probe: EX3DV4 - SN7441; ConvF(8.05, 8.05, 8.05) @ 1880 MHz; Calibrated: 2020/2/8
- Sensor-Surface: 1.4mm (Mechanical Surface Detection)
- Electronics: DAE3 Sn471; Calibrated: 2019/12/25
- Phantom: Twin SAM; Type: Twin SAM V5.0; Serial: TP:1412
- Measurement SW: DASY52, Version 52.10 (2); SEMCAD X Version 14.6.12 (7470)

Area Scan (41x101x1): Interpolated grid: dx=1.500 mm, dy=1.500 mm

Maximum value of SAR (interpolated) = 0.516 W/kg

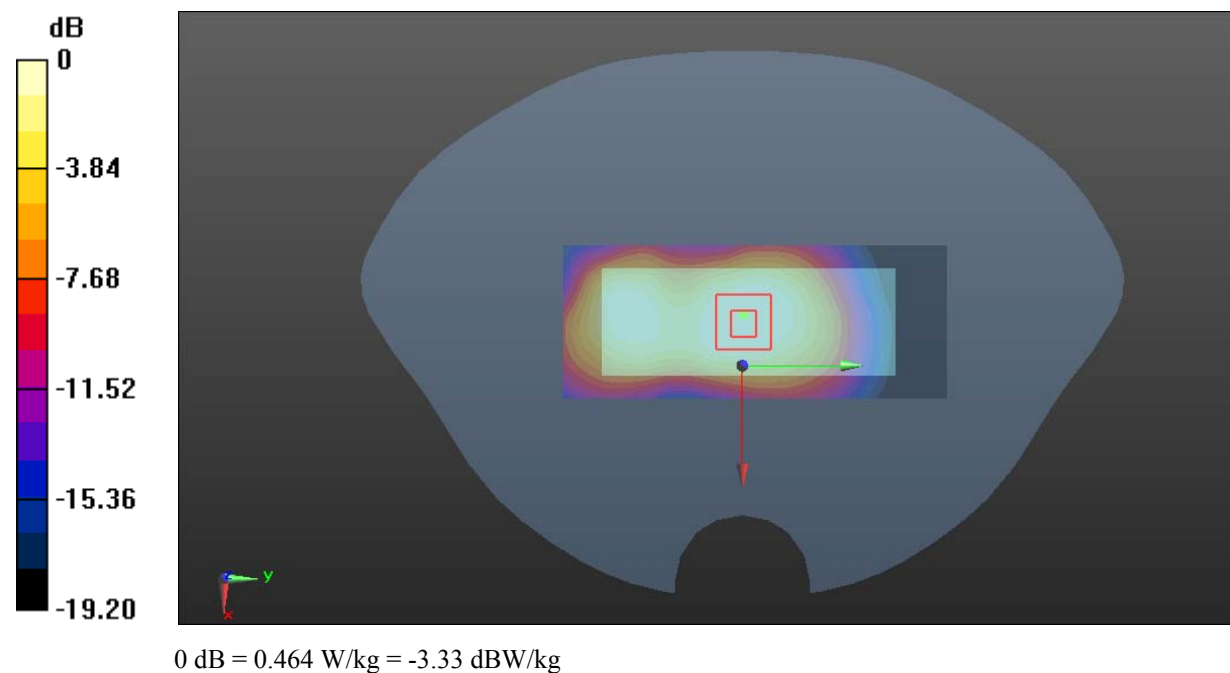
Zoom Scan (5x5x7)/Cube 0: Measurement grid: dx=8mm, dy=8mm, dz=5mm

Reference Value = 15.24 V/m; Power Drift = 0.12 dB

Peak SAR (extrapolated) = 0.583 W/kg

SAR(1 g) = 0.315 W/kg; SAR(10 g) = 0.176 W/kg

Maximum value of SAR (measured) = 0.464 W/kg



Test Plot 17#:PCS 1900_Body Worn Front_Mid**DUT: Mobile Phone; Type: NEO 7; Serial: RDG200710002-SA-S1**

Communication System:Generic GSM ; Frequency: 1880 MHz;Duty Cycle: 1:8

Medium parameters used: $f = 1880$ MHz; $\sigma = 1.398$ S/m; $\epsilon_r = 40.094$; $\rho = 1000$ kg/m³

Phantom section: Flat Section

DASY5 Configuration:

- Probe: EX3DV4 - SN7441; ConvF(8.05, 8.05, 8.05) @ 1880 MHz; Calibrated: 2020/2/8
- Sensor-Surface: 1.4mm (Mechanical Surface Detection)
- Electronics: DAE3 Sn471; Calibrated: 2019/12/25
- Phantom: Twin SAM; Type: Twin SAM V5.0; Serial: TP:1412
- Measurement SW: DASY52, Version 52.10 (2); SEMCAD X Version 14.6.12 (7470)

Area Scan (41x101x1): Interpolated grid: dx=1.500 mm, dy=1.500 mm

Maximum value of SAR (interpolated) = 0.188 W/kg

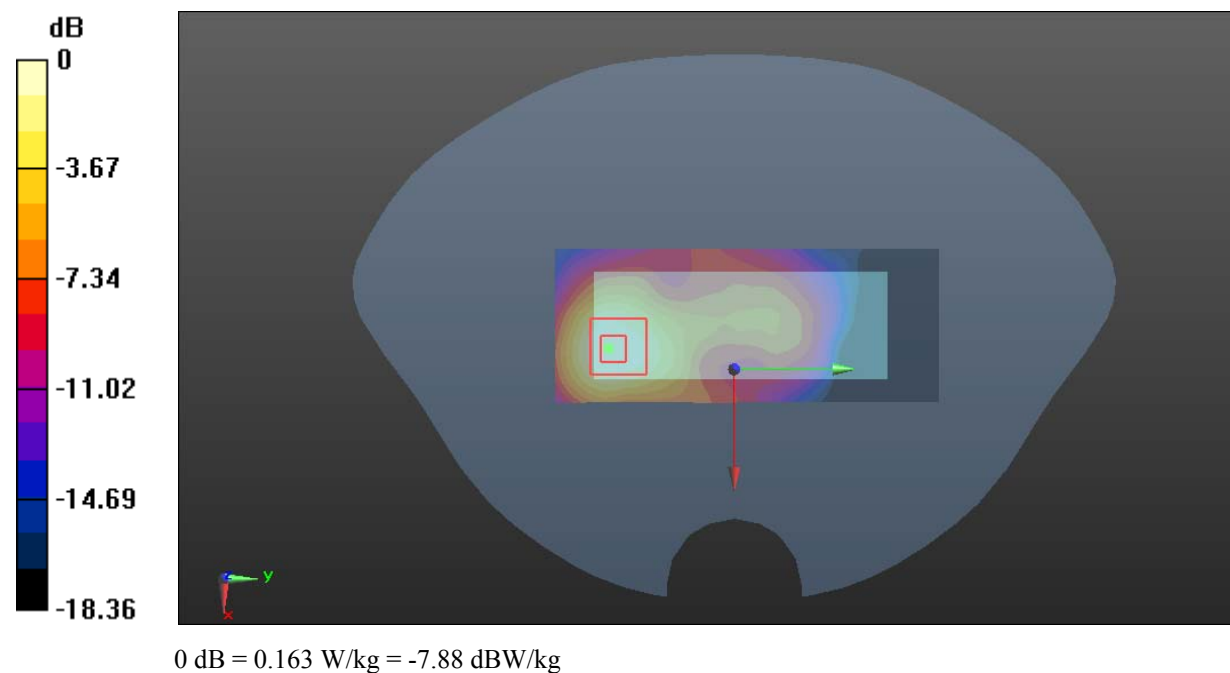
Zoom Scan (5x5x7)/Cube 0: Measurement grid: dx=8mm, dy=8mm, dz=5mm

Reference Value = 4.294 V/m; Power Drift = 0.16 dB

Peak SAR (extrapolated) = 0.209 W/kg

SAR(1 g) = 0.101 W/kg; SAR(10 g) = 0.053 W/kg

Maximum value of SAR (measured) = 0.163 W/kg



Test Plot 18#:PCS 1900_Body Back_Mid**DUT: Mobile Phone; Type: NEO 7; Serial: RDG200710002-SA-S1**

Communication System:Generic GPRS-3 slots ; Frequency: 1880 MHz;Duty Cycle: 1:2.66

Medium parameters used: $f = 1880$ MHz; $\sigma = 1.398$ S/m; $\epsilon_r = 40.094$; $\rho = 1000$ kg/m³

Phantom section: Flat Section

DASY5 Configuration:

- Probe: EX3DV4 - SN7441; ConvF(8.05, 8.05, 8.05) @ 1880 MHz; Calibrated: 2020/2/8
- Sensor-Surface: 1.4mm (Mechanical Surface Detection)
- Electronics: DAE3 Sn471; Calibrated: 2019/12/25
- Phantom: Twin SAM; Type: Twin SAM V5.0; Serial: TP:1412
- Measurement SW: DASY52, Version 52.10 (2); SEMCAD X Version 14.6.12 (7470)

Area Scan (41x101x1): Interpolated grid: dx=1.500 mm, dy=1.500 mm

Maximum value of SAR (interpolated) = 0.832 W/kg

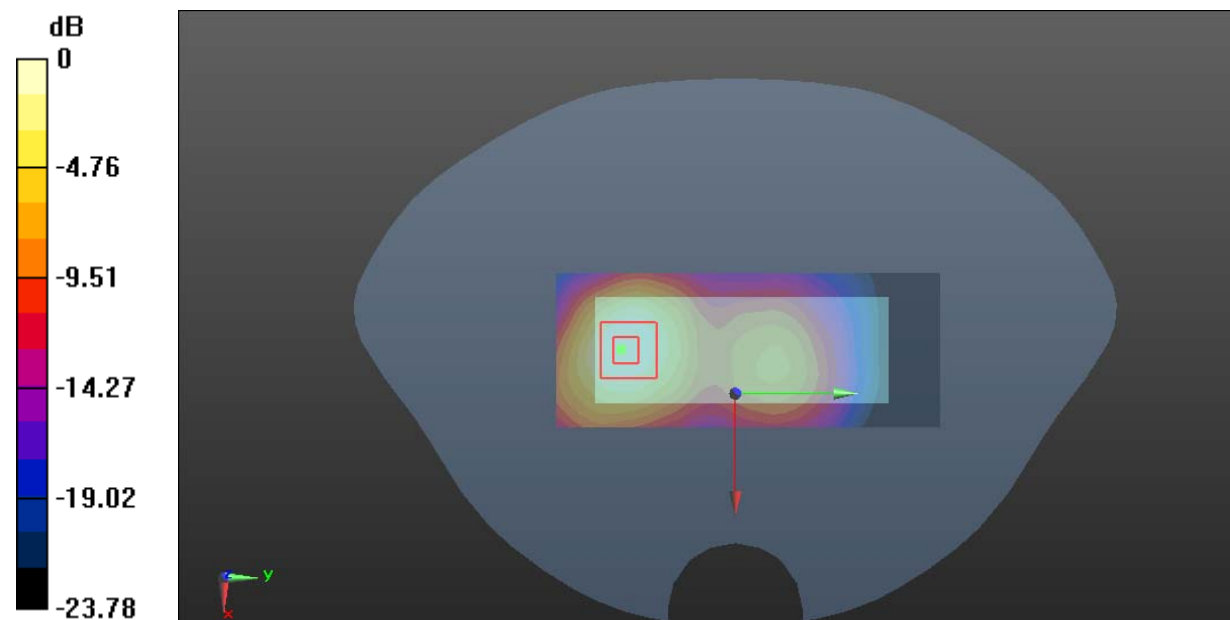
Zoom Scan (5x5x7)/Cube 0: Measurement grid: dx=8mm, dy=8mm, dz=5mm

Reference Value = 8.125 V/m; Power Drift = -0.12 dB

Peak SAR (extrapolated) = 1.08 W/kg

SAR(1 g) = 0.535 W/kg; SAR(10 g) = 0.271 W/kg

Maximum value of SAR (measured) = 0.856 W/kg



0 dB = 0.856 W/kg = -0.68 dBW/kg

Test Plot 19#:PCS 1900_Body Front_Mid**DUT: Mobile Phone; Type: NEO 7; Serial: RDG200710002-SA-S1**

Communication System:Generic GPRS-3 slots ; Frequency: 1880 MHz;Duty Cycle: 1:2.66

Medium parameters used: $f = 1880$ MHz; $\sigma = 1.398$ S/m; $\epsilon_r = 40.094$; $\rho = 1000$ kg/m³

Phantom section: Flat Section

DASY5 Configuration:

- Probe: EX3DV4 - SN7441; ConvF(8.05, 8.05, 8.05) @ 1880 MHz; Calibrated: 2020/2/8
- Sensor-Surface: 1.4mm (Mechanical Surface Detection)
- Electronics: DAE3 Sn471; Calibrated: 2019/12/25
- Phantom: Twin SAM; Type: Twin SAM V5.0; Serial: TP:1412
- Measurement SW: DASY52, Version 52.10 (2); SEMCAD X Version 14.6.12 (7470)

Area Scan (41x101x1): Interpolated grid: dx=1.500 mm, dy=1.500 mm

Maximum value of SAR (interpolated) = 0.414 W/kg

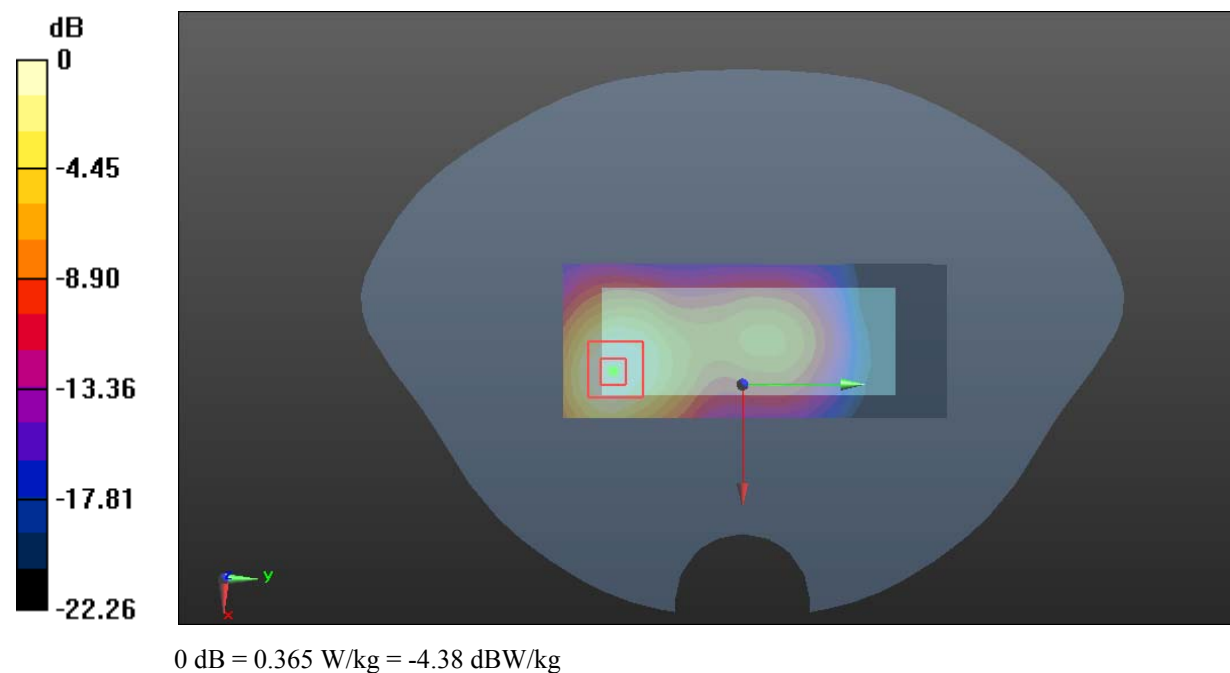
Zoom Scan (5x5x7)/Cube 0: Measurement grid: dx=8mm, dy=8mm, dz=5mm

Reference Value = 7.086 V/m; Power Drift = 0.16 dB

Peak SAR (extrapolated) = 0.475 W/kg

SAR(1 g) = 0.227 W/kg; SAR(10 g) = 0.115 W/kg

Maximum value of SAR (measured) = 0.365 W/kg



Test Plot 20#:PCS 1900_Body Bottom_Mid**DUT: Mobile Phone; Type: NEO 7; Serial: RDG200710002-SA-S1**

Communication System:Generic GPRS-3 slots ; Frequency: 1880 MHz;Duty Cycle: 1:2.66

Medium parameters used: $f = 1880$ MHz; $\sigma = 1.398$ S/m; $\epsilon_r = 40.094$; $\rho = 1000$ kg/m³

Phantom section: Flat Section

DASY5 Configuration:

- Probe: EX3DV4 - SN7441; ConvF(8.05, 8.05, 8.05) @ 1880 MHz; Calibrated: 2020/2/8
- Sensor-Surface: 1.4mm (Mechanical Surface Detection)
- Electronics: DAE3 Sn471; Calibrated: 2019/12/25
- Phantom: Twin SAM; Type: Twin SAM V5.0; Serial: TP:1412
- Measurement SW: DASY52, Version 52.10 (2); SEMCAD X Version 14.6.12 (7470)

Area Scan (41x101x1): Interpolated grid: dx=1.500 mm, dy=1.500 mm

Maximum value of SAR (interpolated) = 0.351 W/kg

Zoom Scan (5x5x7)/Cube 0: Measurement grid: dx=8mm, dy=8mm, dz=5mm

Reference Value = 12.30 V/m; Power Drift = 0.18 dB

Peak SAR (extrapolated) = 0.455 W/kg

SAR(1 g) = 0.210 W/kg; SAR(10 g) = 0.103 W/kg

Maximum value of SAR (measured) = 0.352 W/kg

