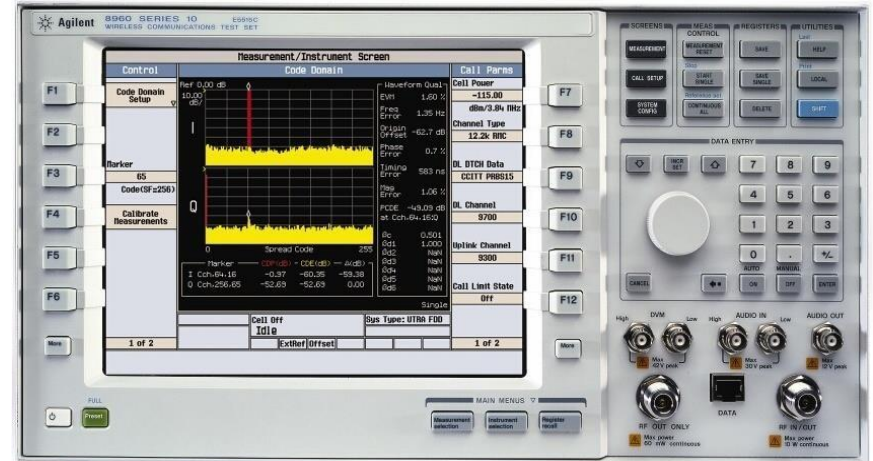
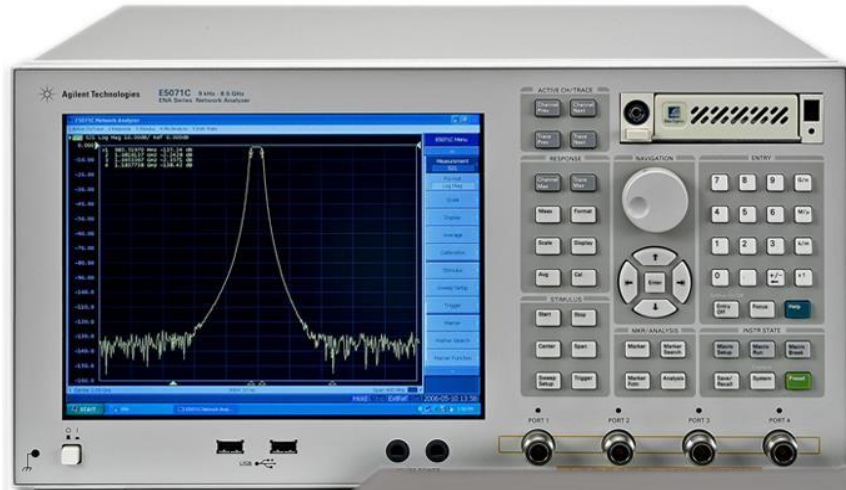
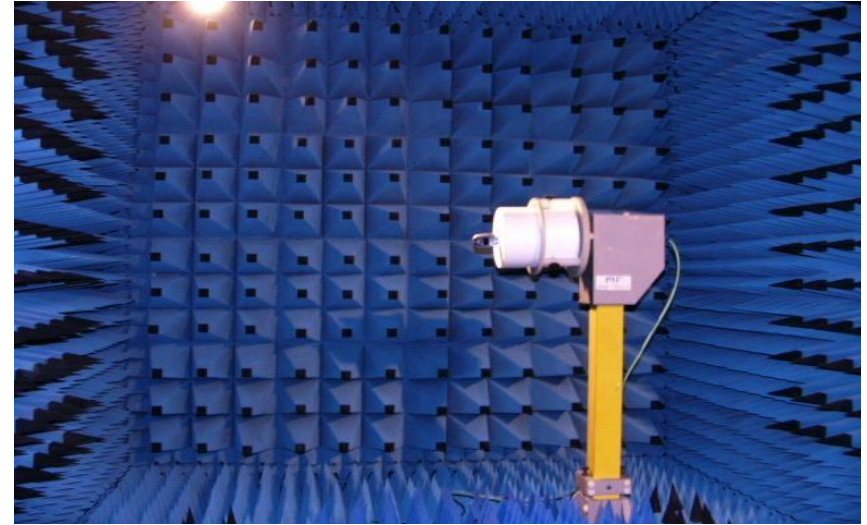


# *Antenna Test Report*

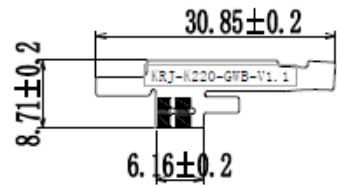
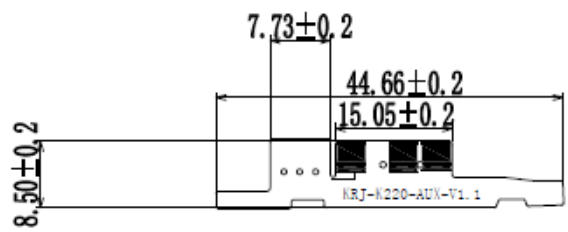
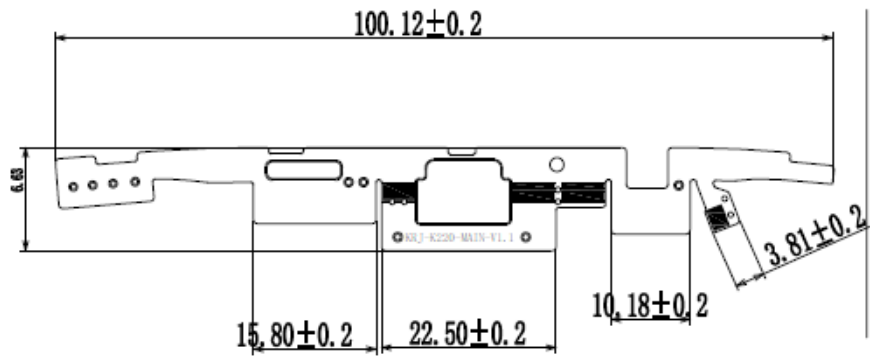
*Project: GRAVITY G65*

# 1. The Equipment of Active Test

- 1: Anechoic Chamber 7x4x3 m (3D)
- 2: Rohde & Schwarz CMW500
- 3: AGILENT 8960 5515C
- 4: Network Analyzer-AGILENT ENA5071B



# 2. Antenna pattern

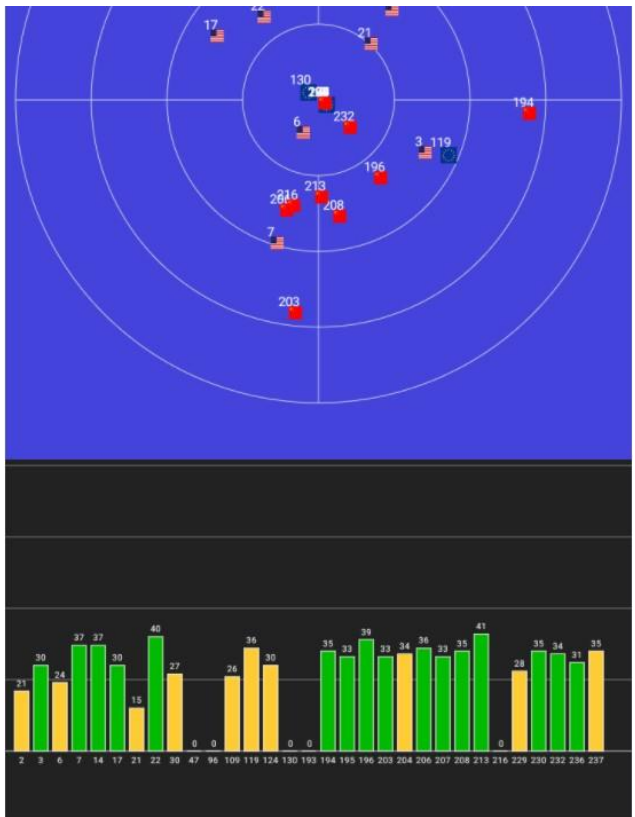


# 3. Test Data

	TRP	TIS		TRP	TIS		TRP	TIS
GSM850	24.8		LTEB2	18.84		LTEB71	15.11	
	24.37	-100.87		19.01	-92.07		15.3	-90.95
GSM900	25.1		LTEB4	19.08		LTEB41	18.4	
	24.18	-100.51		19.16	-90.43		17.66	-90.39
DCS1800	25.99		LTEB5	16.33				
	26.31	-105.1		15.4	-89.38			
PCS1900	26.47		LTEB12	16.57				
	26.33	-104.18		16.31	-90.27			
WCDMAB1	19.12		LTEB17	16.68				
	19.28	-104.19		16.24	-91.38			
WCDMAB2	19.52		LTEB28AB	16.77				
	19.37	-104.07		17.32	-86.24			
WCDMAB4	19.25			17.25				
	19.09	-104.22		17.66	-89.88			
WCDMAB5	15.9		LTEB66	19.17				
	15.1	-101.3		19.01	-91.09			

# 4. GPS

GPS	
location	test result
Huaqiang creative park 5C outdoor	Cold start for 70 seconds, the maximum C value is 41, and more than 5 stars can be used.



# 5. WIFI/BT

	CH	TRP	TIS
WIFI 2.4G b/11M	1	11.57	-82.65
	6	12.12	-81.57
	11	11.92	-81.65

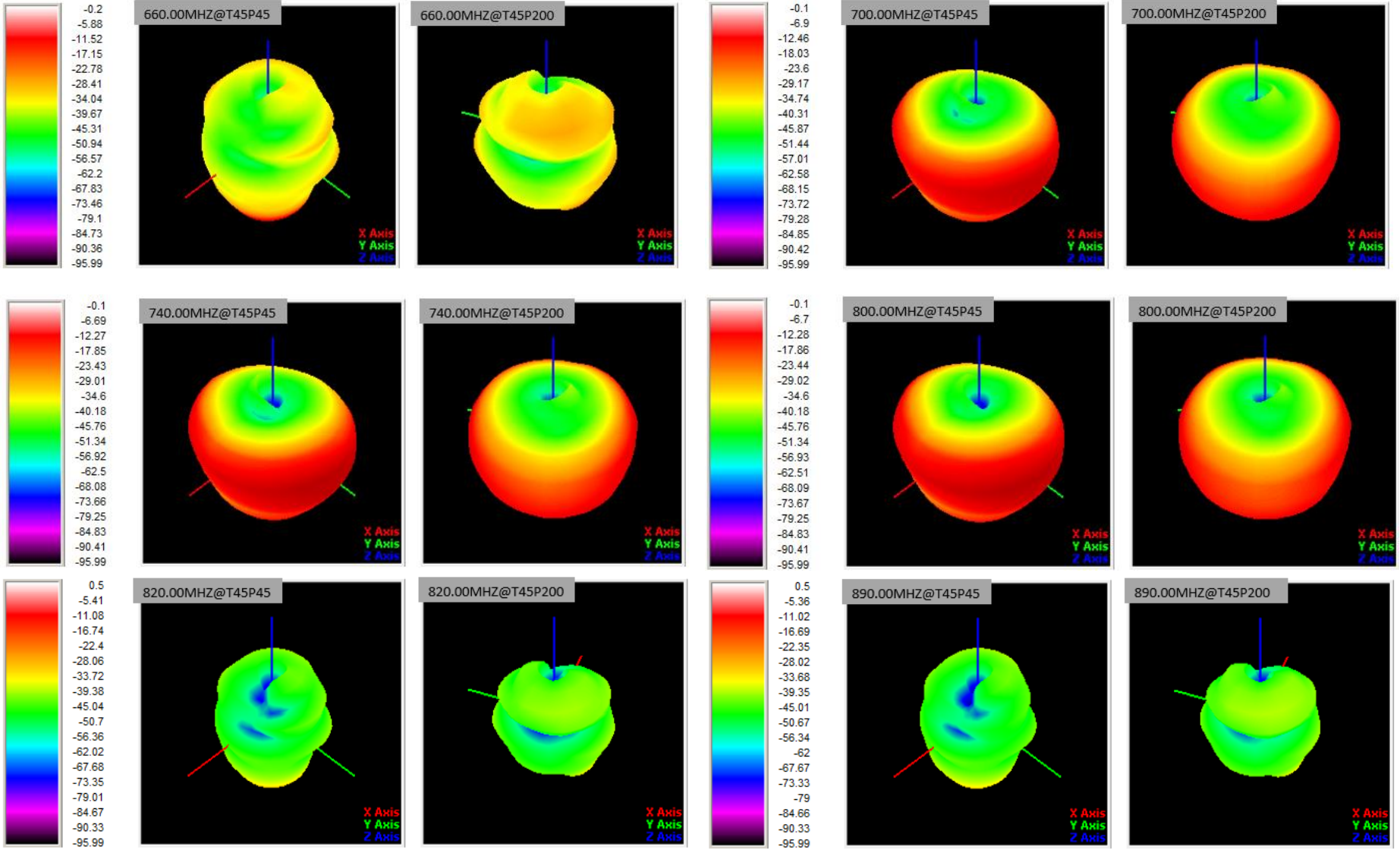
# 6. PASSIVE DATA

Main antenna	Frequency	Gain (dBi)
GSM850	824-894MHZ	0.5
GSM900	880-960MHZ	0.5
DCS1800	1710-1880MHZ	2
PCS1900	1850-1990MHZ	2
WCDMAB1	1922-2167MHZ	2
WCDMAB2	1852-1987MHZ	2
WCDMAB4	1712-2152MHZ	2
WCDMAB5	826-894MHZ	0.5

Main antenna	Frequency	Gain (dBi)
<b>B2</b>	1850-1900MHZ	2
<b>B4</b>	1710-2155MHZ	2
<b>B5</b>	824-894MHZ	0.5
<b>B12</b>	699-746MHZ	-0.1
<b>B17</b>	704-746MHZ	-0.1
<b>B28</b>	703-803MHZ	-0.1
<b>B41</b>	2496-2690MHZ	0.37
<b>B66</b>	703-748MHZ	2
<b>B71</b>	663-652MHZ	-0.2

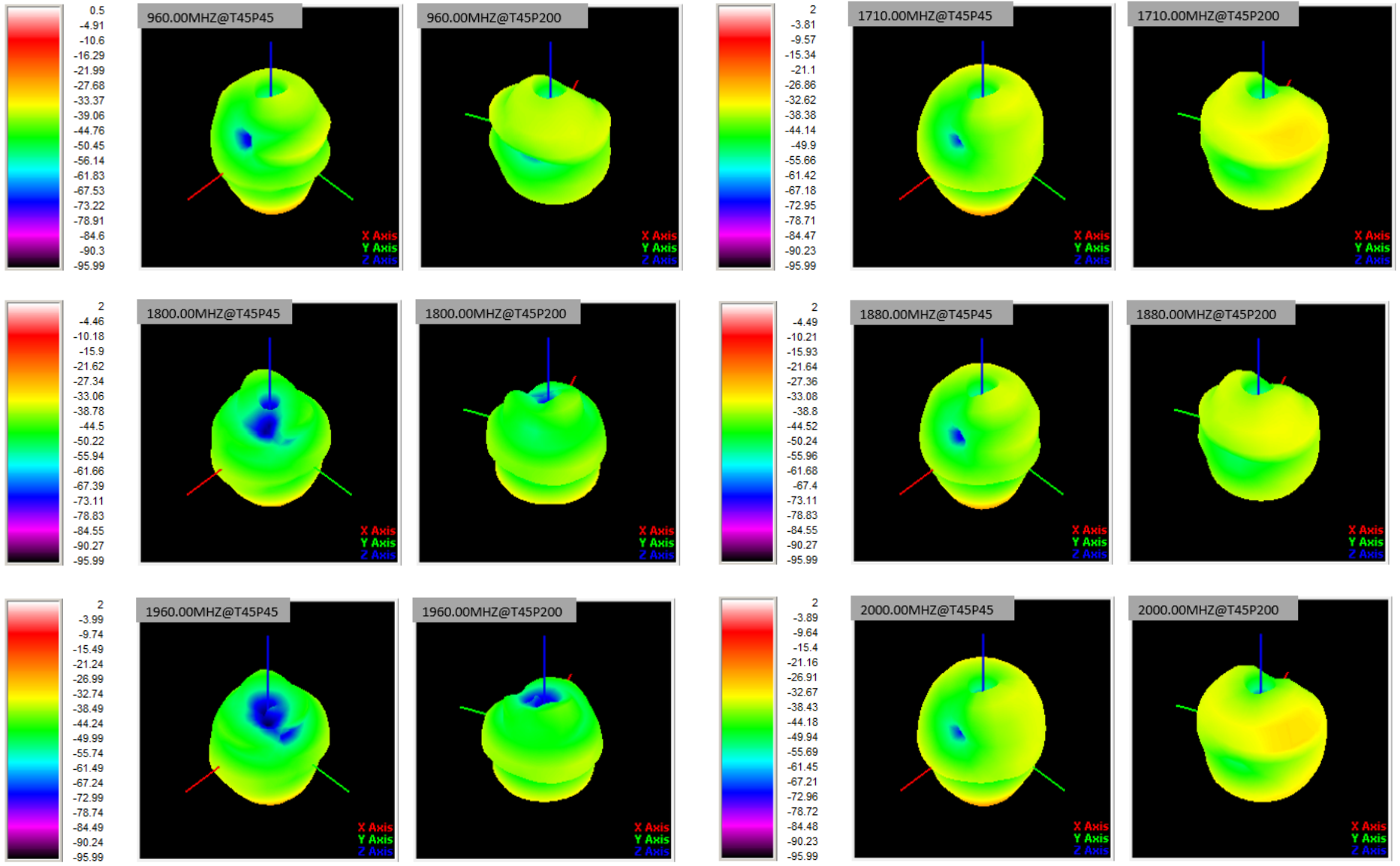
antenna	Frequency	Gain (dBi)
wifi/BT	2400-2500MHZ	1.5
GPS	1575.42MHZ	0.37

# 7. Main antenna pattern

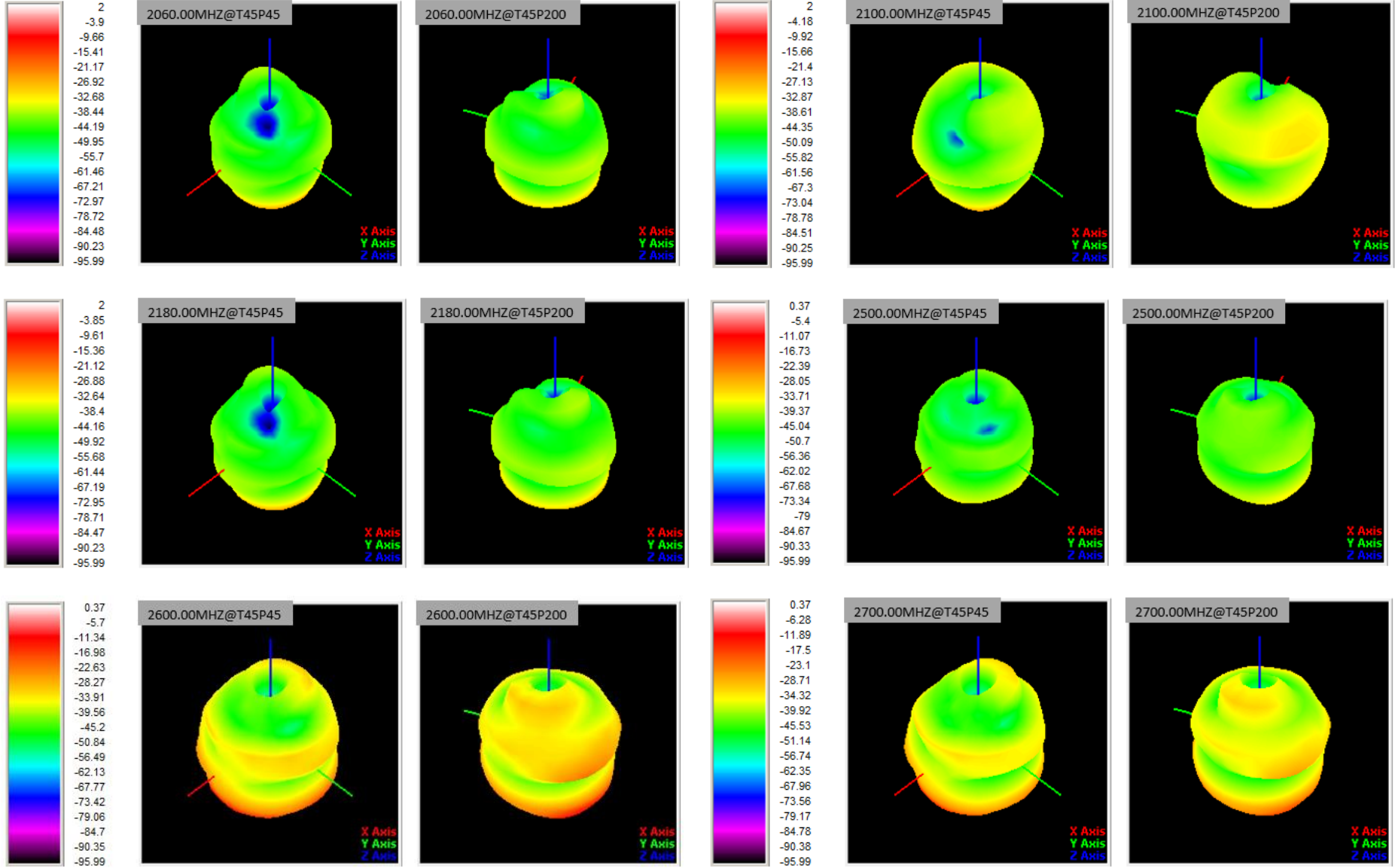




# 8. Main antenna pattern



# 8. Main antenna pattern



# 9.WIFI/BT/GPS antenna pattern

