

Feature

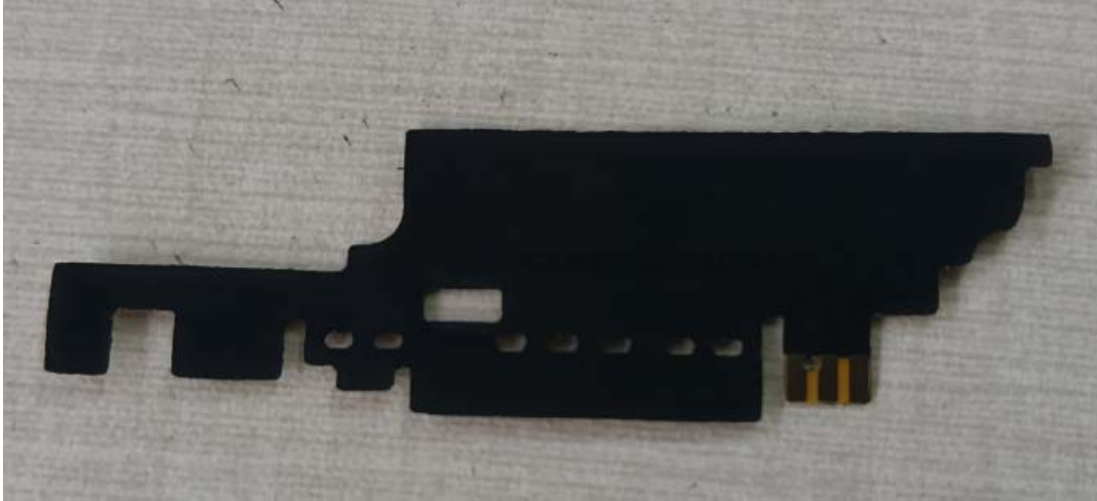
- ※ High gain
- ※ Omani-directional
- ※ Wide bandwidth

Application

※ GSM850/900/DCS1800/PCS1900WCDMA/B2/B4/B5 LTE B2 B4 B5 B12 B17 B66 B41 communication applications



WWAN Main Antenna



LTE DIV Antenna



GWB Antenna



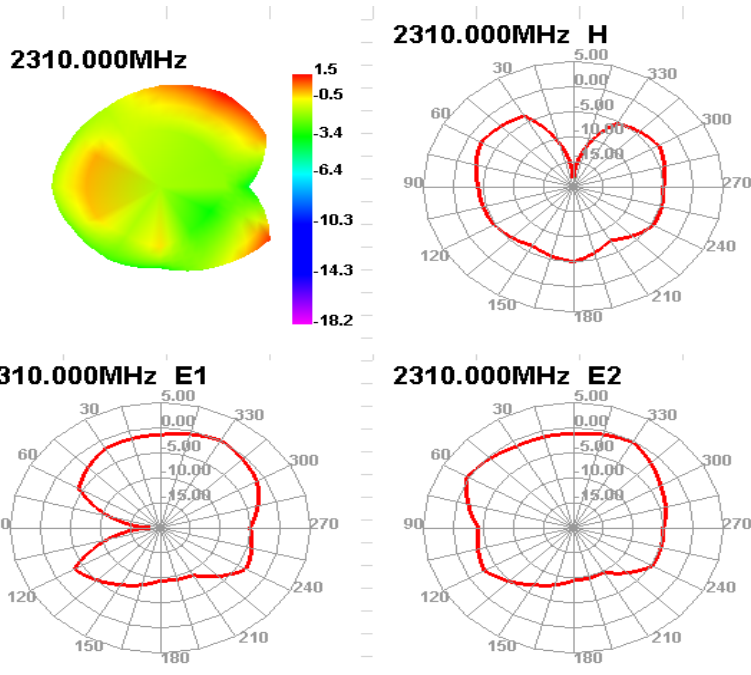
Dimensions

CUSTOMER' S P/N	UCT		DRAWING NO	63R
PREPARED BY	CHECKEDBY	APPROVAL BY	S.R.NO	
			DATE:	2023-02-01

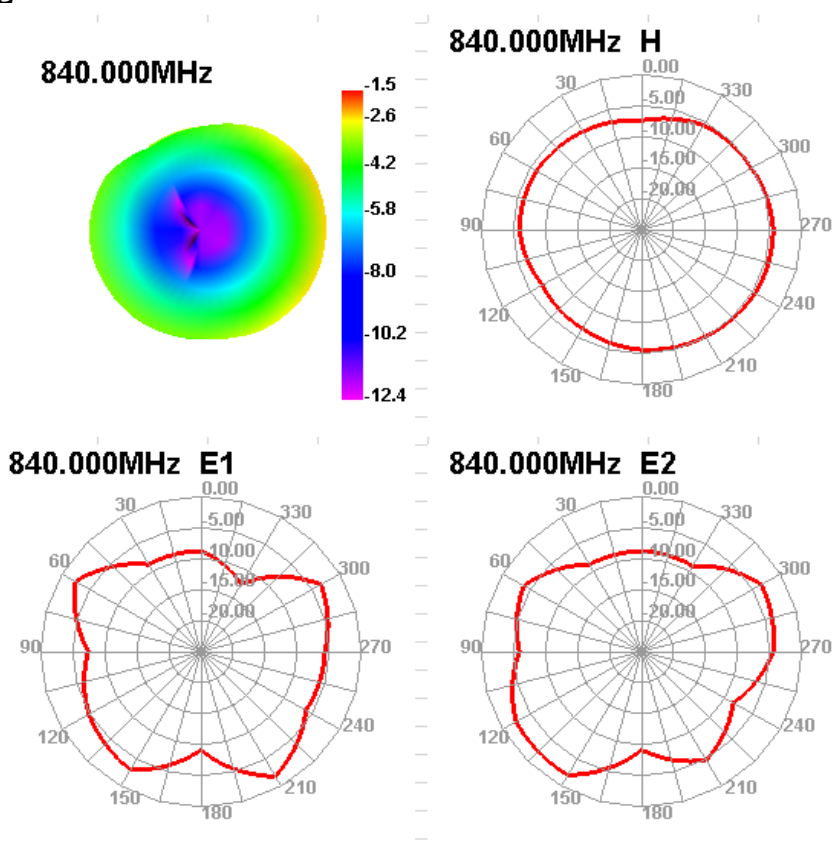
Electric Specifications

Antenna Gain	GSM850: 0.23dBi
	GSM900: 0.31dBi
	DCS1800: 0.40dBi
	PCS1900: 0.42dBi
	WCDMA1900: 0.42dBi
	WCDMA850: 0.23dBi
	WCDMA1700: 0.40dBi
	TLE B2: 0.42dBi
	TLE B4: 0.40dBi
	TLE B5: 0.23dBi
	TLE B12: 0.22dBi
	TLE B17: 0.22dBi
	LTE B66: 0.40dBi
	LTE B41: 0.54dBi
GPS:0.56dBi	
BT: 0.74dBi	
WIFI: 0.74dBi	

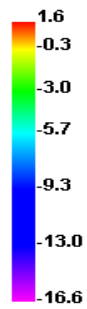
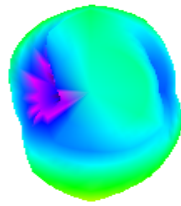
LWAN



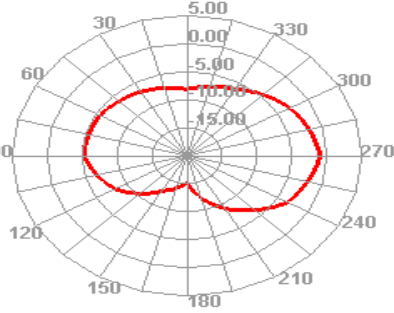
LTE



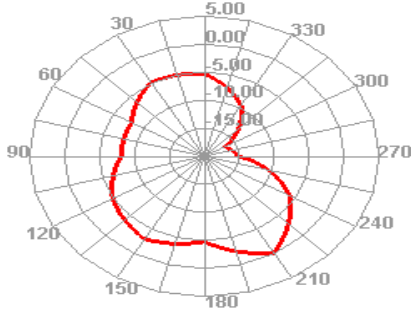
1880.000MHz



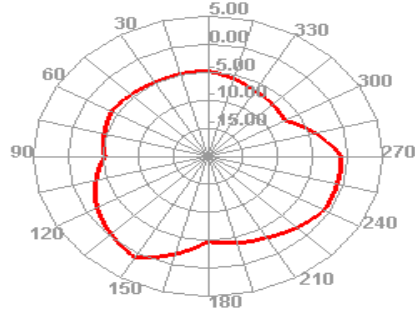
1880.000MHz H



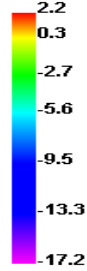
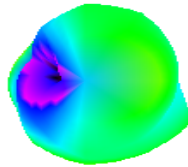
1880.000MHz E1



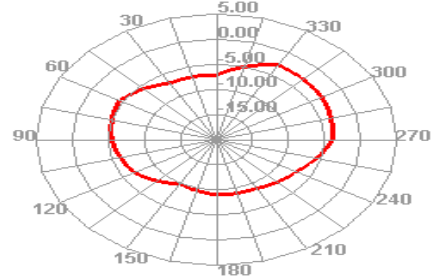
1880.000MHz E2



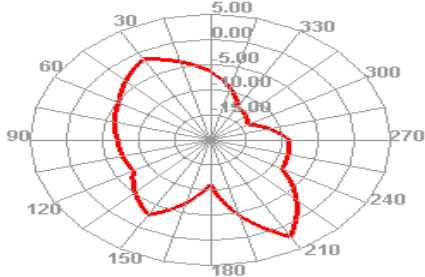
2130.000MHz



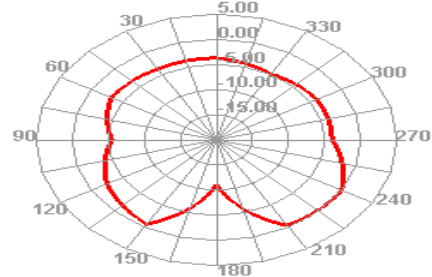
2130.000MHz H

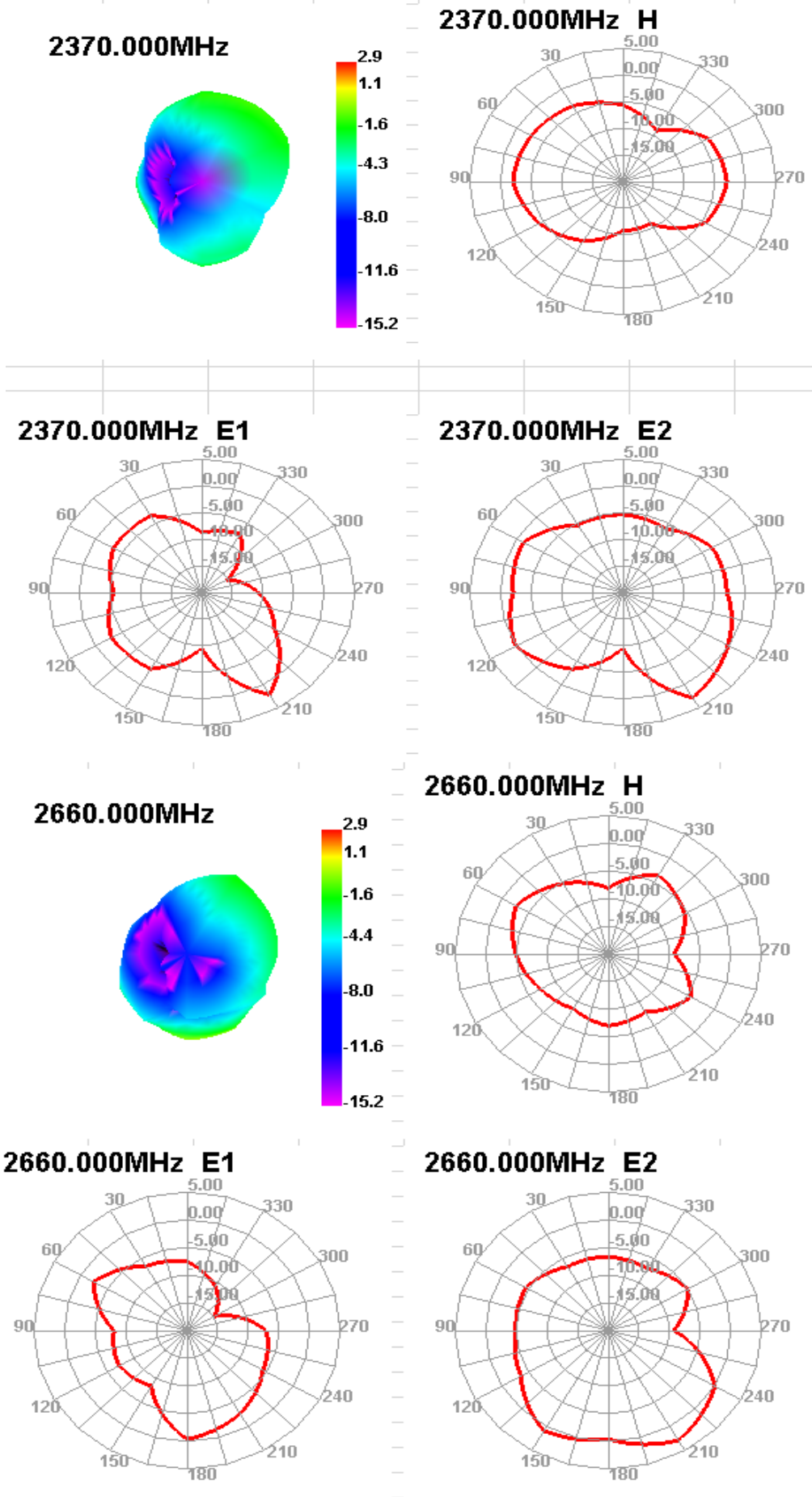


2130.000MHz E1



2130.000MHz E2



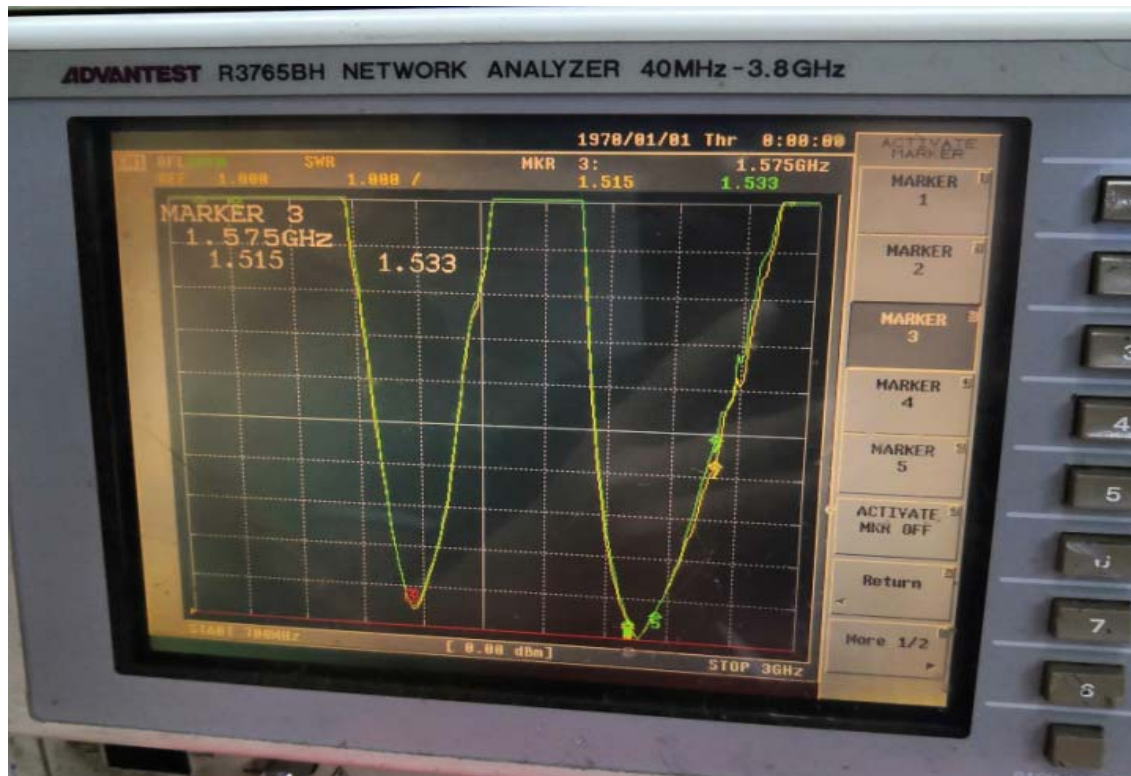


※ Antenn

※ VSWR



GPS WIFI BT



分集 VSWR



CUSTOMER' S P/N	UCT		DRAWING NO	63R
PREPARED BY	CHECKEDBY	APPROVAL BY	S.R.NO	
			DATE:	2023-02-01