

Antenna test report

Project Name: L4003T

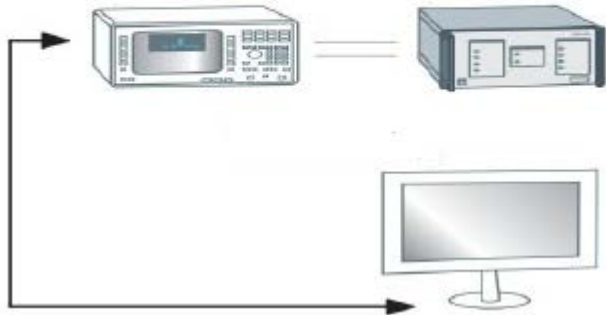
Date: 2023/5/8



The customer name			Project Name	S6802-37A
NO.	project	Detailed above		
1	spectrum	GSM850/900/1800/1900/+WCDMA-B2/B5/+LTE-B2/B3/B4/B5/B7/28+WIFI/BT/GPS		
2	Project type	The mobile phone		
3	Antenna space area			
4	Feed point type			
5	The sensitivity			
6	Type of antenna			
7	The length of the PCB board			
8	note	Debugging prototype		
RF		Liu Chun Yun	15112340864	hxw_lcy@sz-hxw.cn

1、 Test system and test equipment

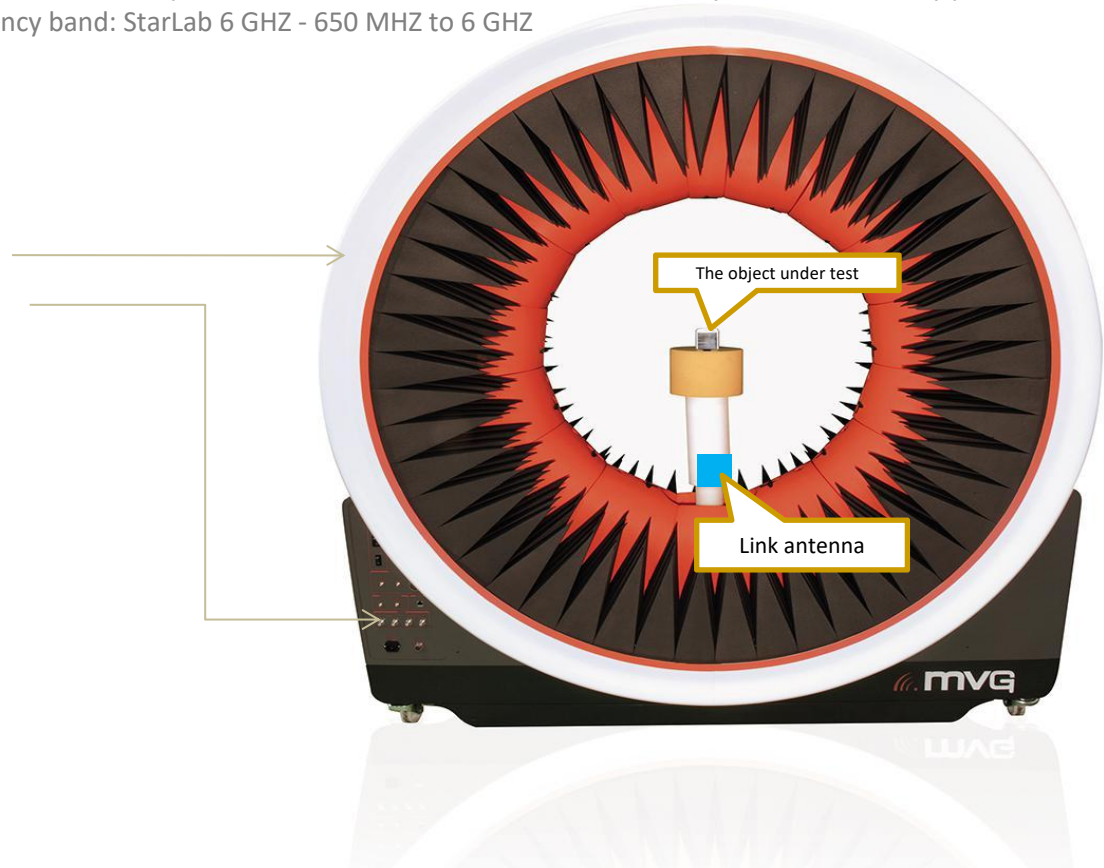
System Brand: MVG(SATIMO) measurement features: gain • pattern beamwidth cross polarization resolution sidelobe level 3D cavity reflectance at any polarization cavity reflectance (line or arc) antenna efficiency TRP, TIS, EIRP and EIS. Frequency band: StarLab 6 GHZ - 650 MHZ to 6 GHZ



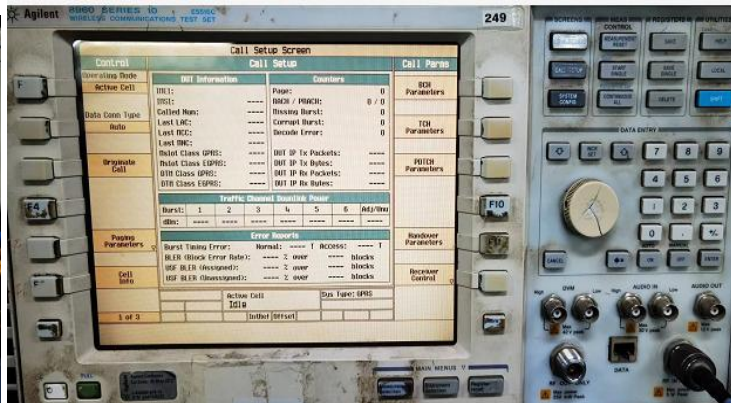
TIS:

		GSM GPRS EDGE	CDMA 1 x RTT 1 x EvDO	WCDMA HSDPA LTE FDD/TDD	Wi-Fi 802.11 a/b/g/n
RSS	+TIS#	8 min		10 min	
EIS	TIS#		5 min		5 min
#	CDMA		8 min		No
EIS	+TIS#				10 min

1. 800MHz
2. 800MHz

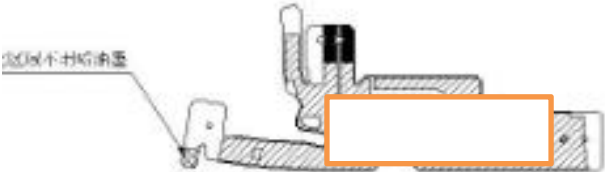


Test Equipment

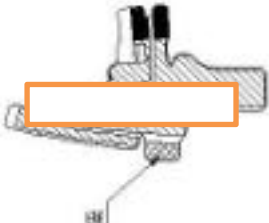


Antenna position

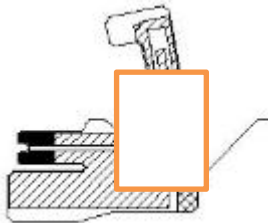
main antenna



diversity antenna



GPS/WIFI/BT antenna



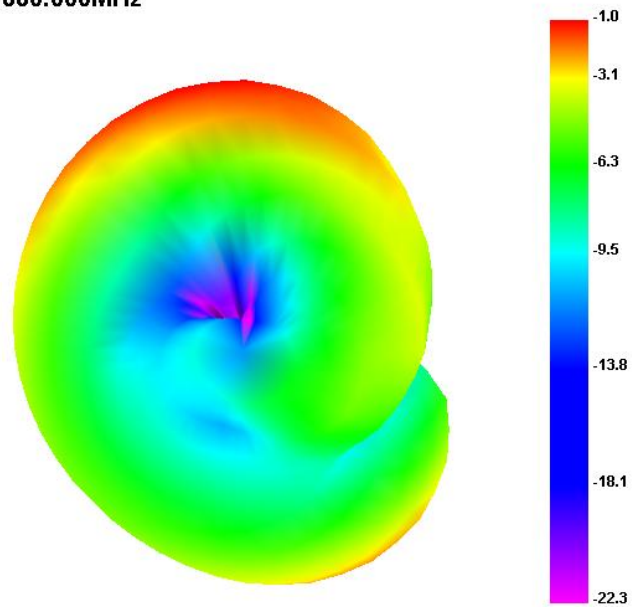
Efficient (2. 4G-WiFi /BT)

PEAK GAIN		
Main Antenna		
2G	Frequency range	dbi
GSM850	824~894Mhz	-0.98dBi
GSM900	880~960Mhz	-1.03dBi
DCS1800	1710~1880Mhz	+0.54dBi
PCS1900	1850~1990Mhz	+0.78dBi
3G		
W1	1920~2170Mhz	+0.7dBi
W2	1850~1990Mhz	+0.78dBi
W4	1712~2152Mhz	+0.61dBi
W5	824~894Mhz	-0.98dBi
W8	880~960Mhz	-1.03dBi
4G		
LTE-B2	1851~1985Mhz	+0.78dBi
LTE-B3	1710~1880Mhz	+0.54dBi
LTE-B4	1712~2152Mhz	+0.61dBi
LTE-B5	824~894Mhz	-0.98dBi
LTE-B7	2500~2690Mhz	+0.67dBi
LTE-B12	699~743Mhz	-1.07dBi
LTE-B17	705~741Mhz	-1.07dBi
LTE-B28	708~798Mhz	-1dBi
LTE-B66	1711~2175Mhz	+0.61dBi
WIFI	2400~2500Mhz	1.2dBi
BT	2400~2500Mhz	1.2dBi

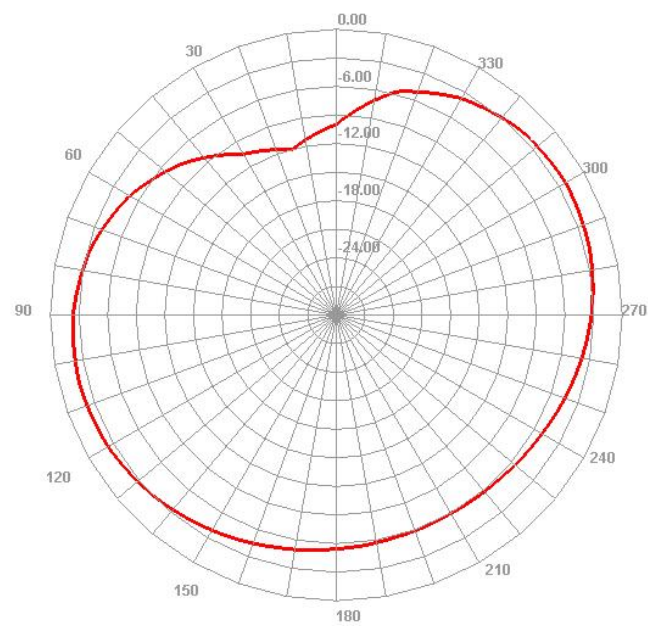
Efficient (GSM850+W5+LTE.B5 824~894Mhz)

Lower antenna

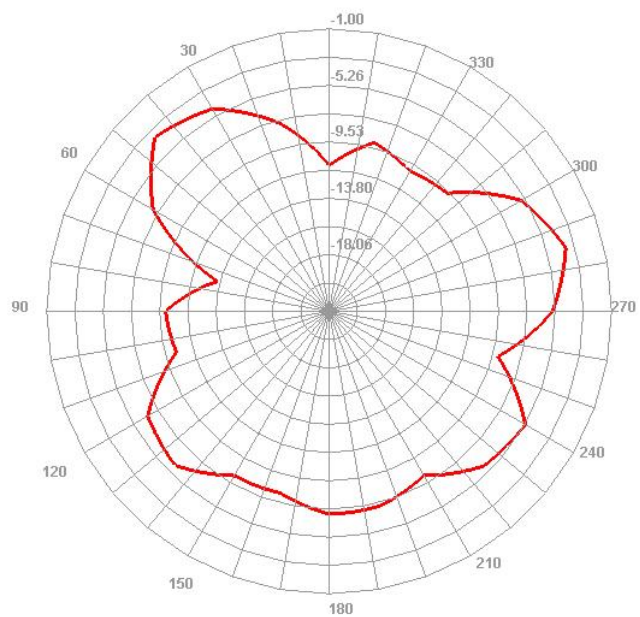
880.000MHz



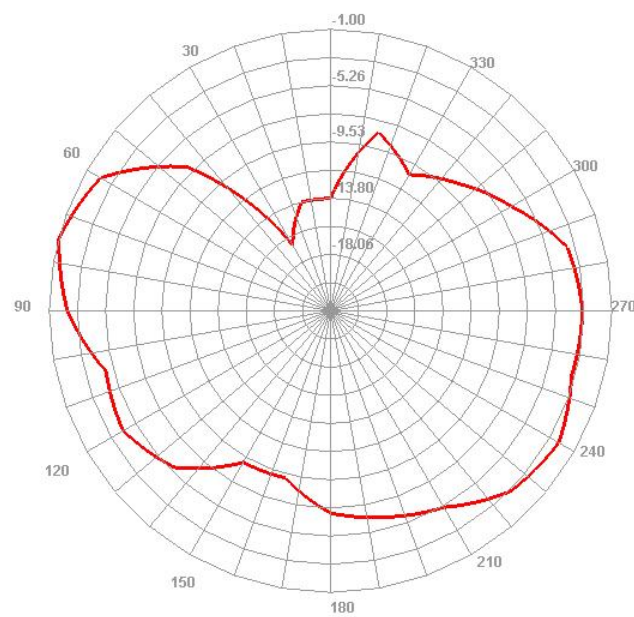
880.000MHz H



880.000MHz E1



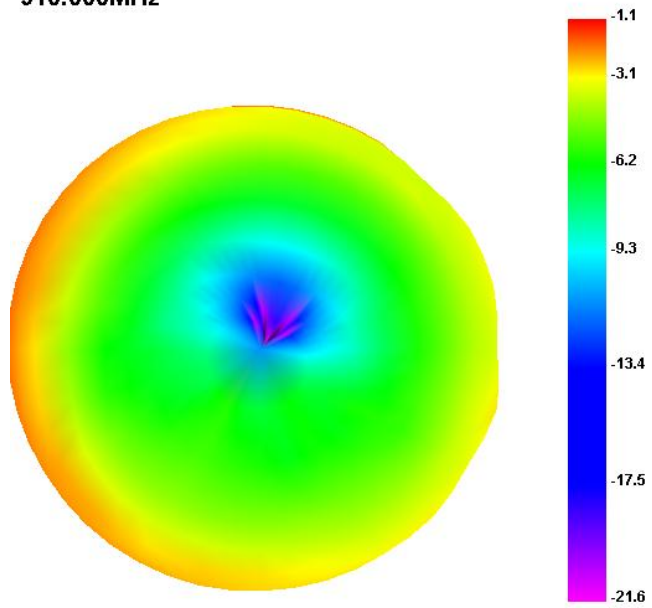
880.000MHz E2



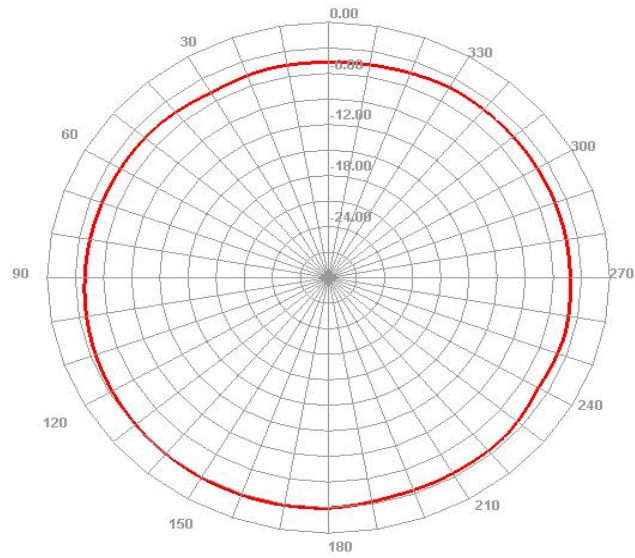
Efficient (GSM900+W8 880~960MHz)

Lower antenna

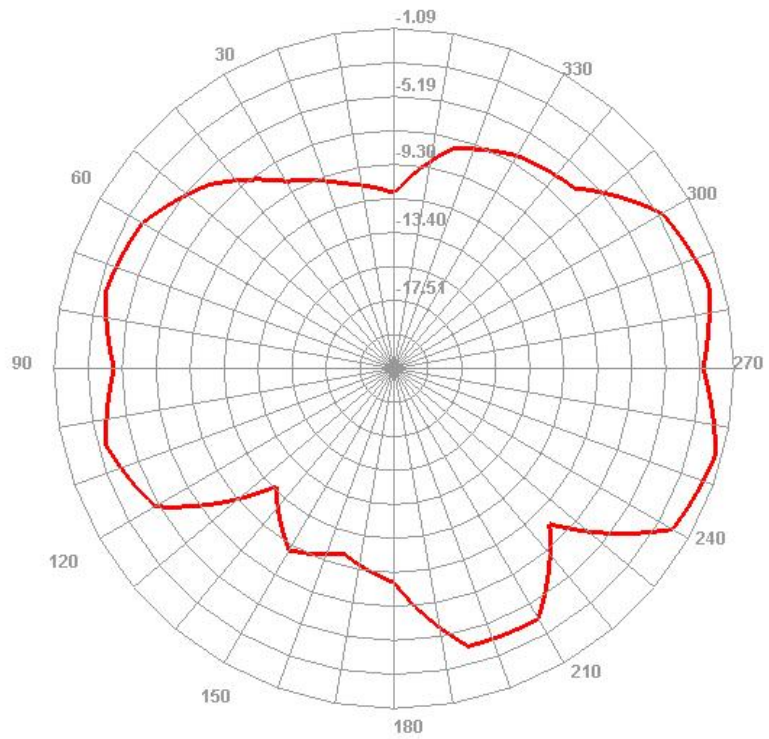
910.000MHz



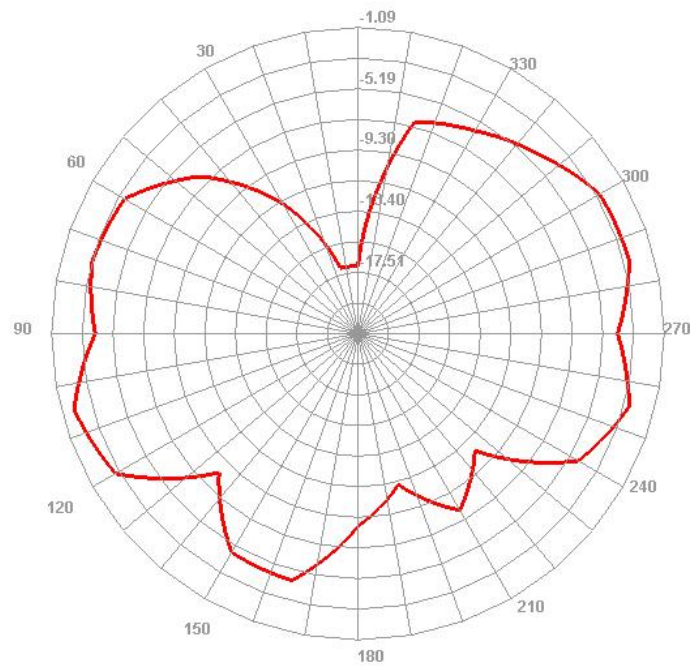
910.000MHz H



910.000MHz E1

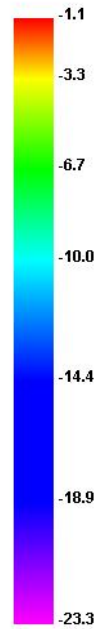
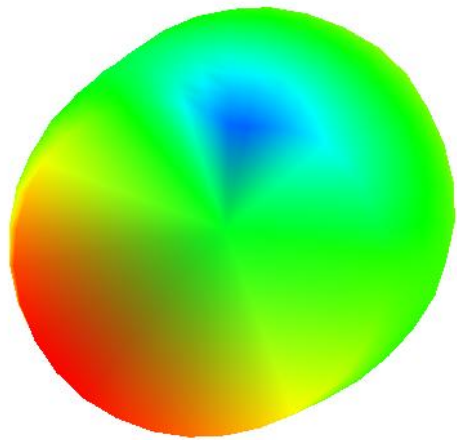


910.000MHz E2



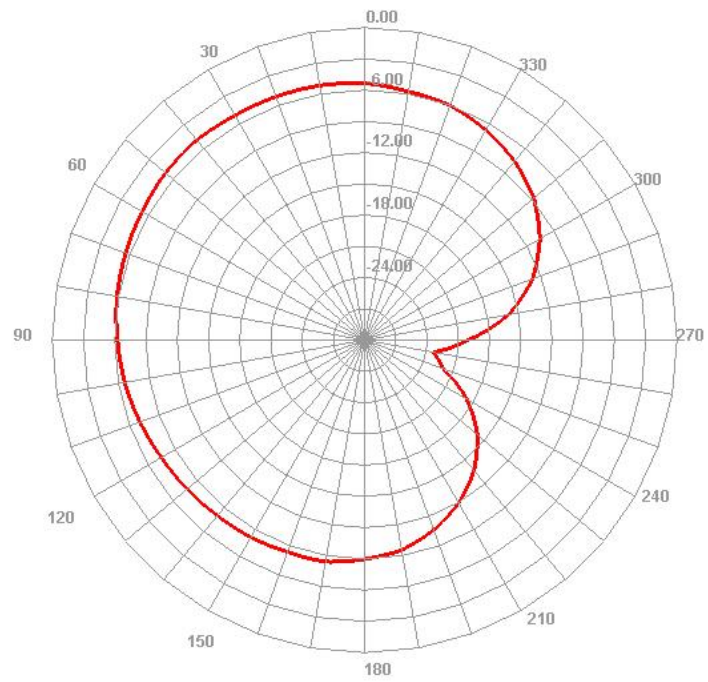
Efficient (B28 699~798Mhz)

730.000MHz

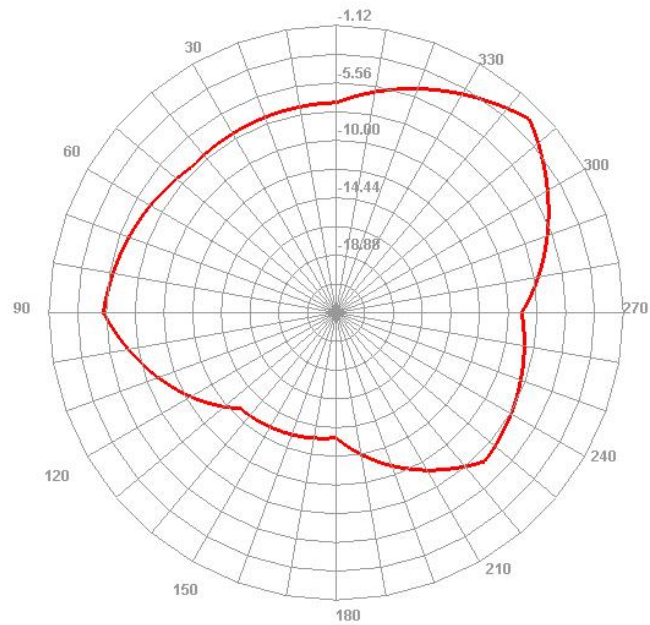


Lower antenna

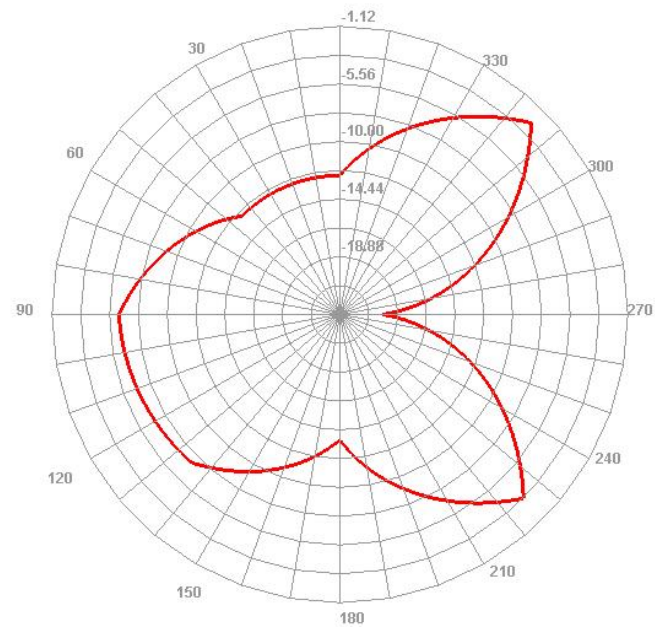
730.000MHz H



730.000MHz E1



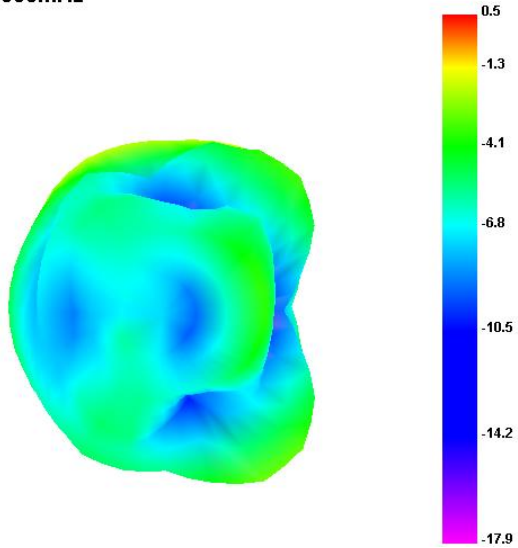
730.000MHz E2



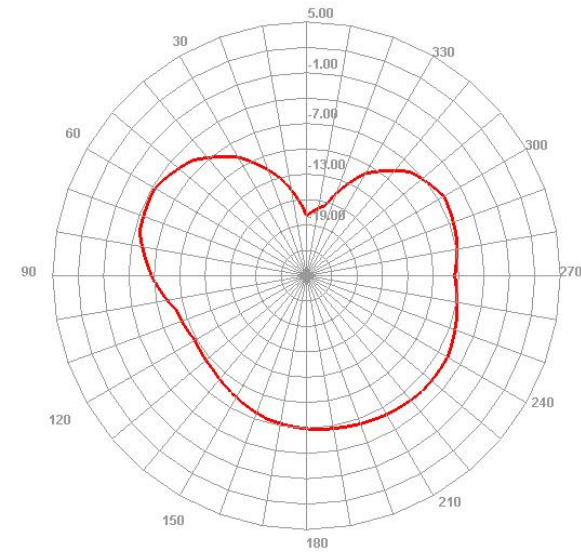
Efficient (GSM1800+LTE.B3 1710~1880Mhz)

Upper antenna

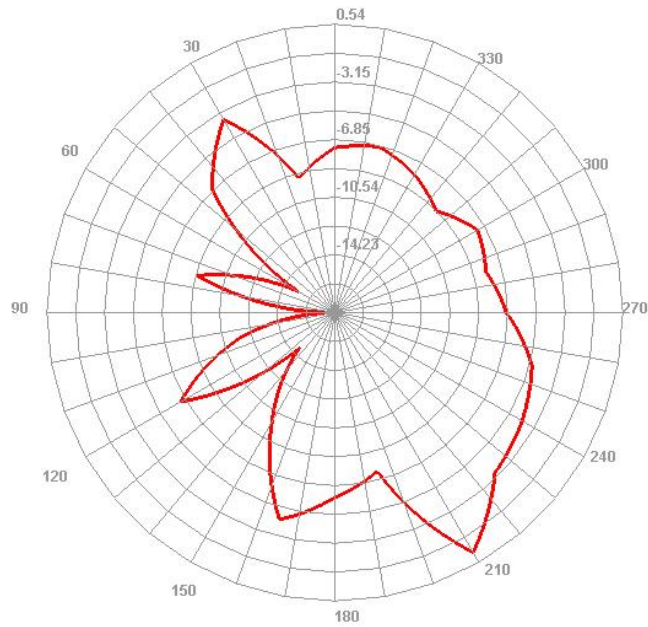
1760.000MHz



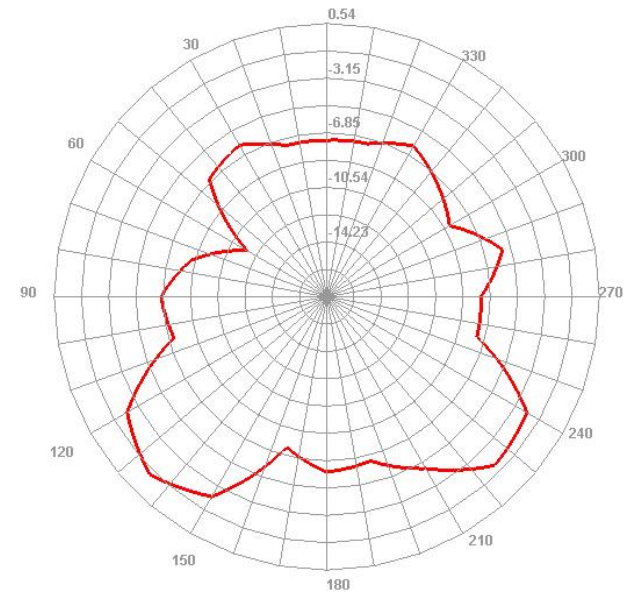
1760.000MHz H



1760.000MHz E1

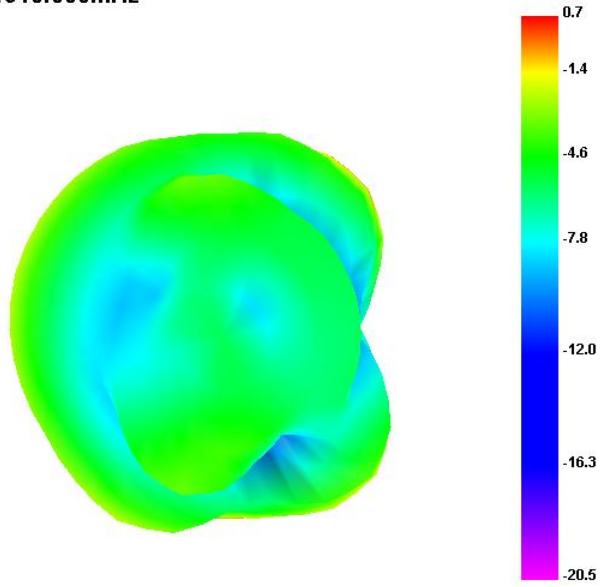


1760.000MHz E2

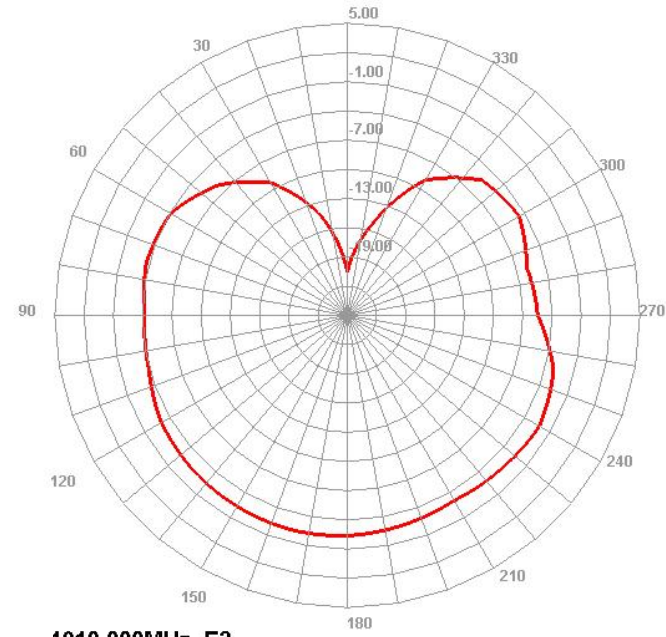


Upper antenna

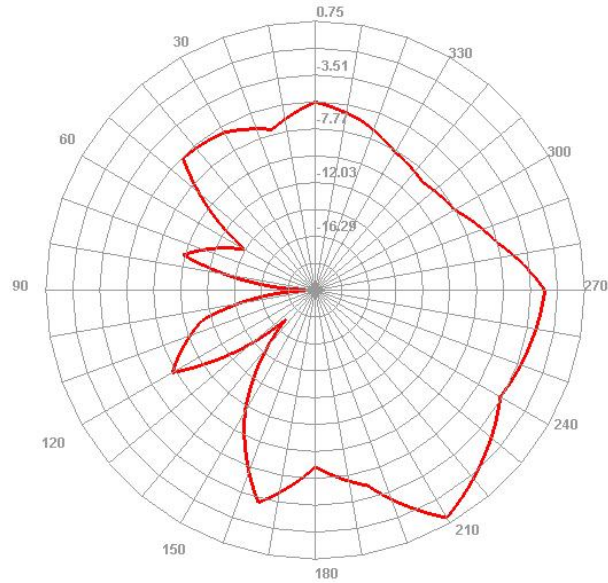
1910.000MHz



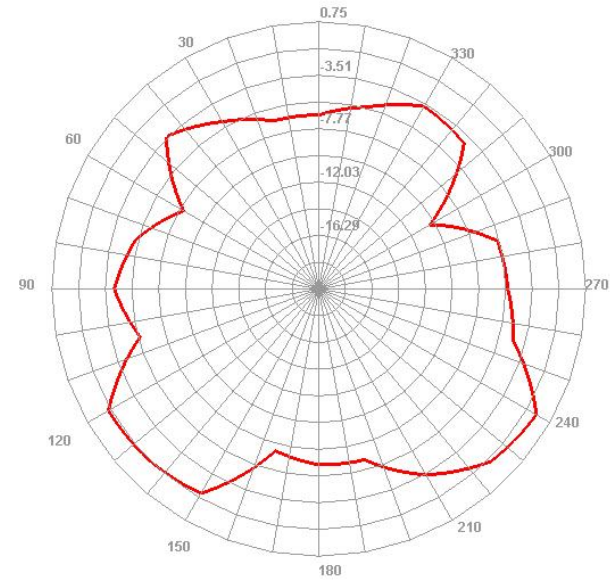
1910.000MHz H



1910.000MHz E1



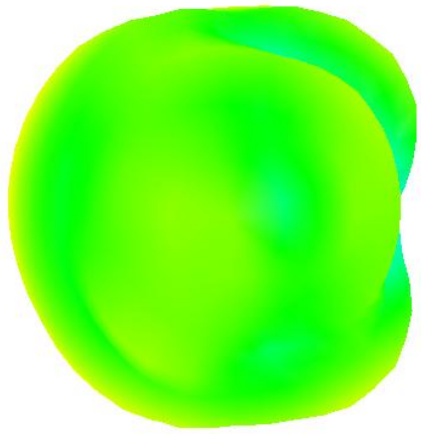
1910.000MHz E2



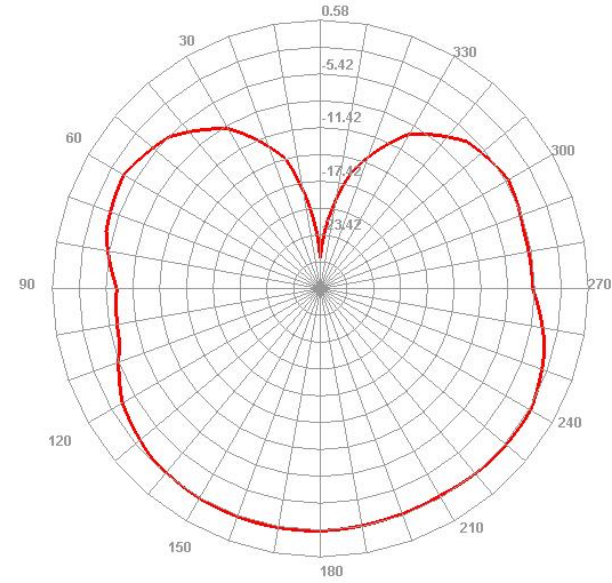
Efficient (W4+LTE.B4+B66 1711~2175Mhz)

Upper antenna

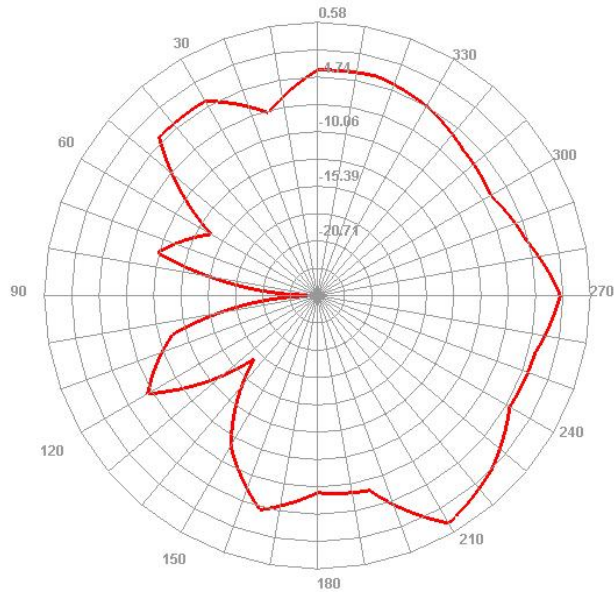
1850.000MHz



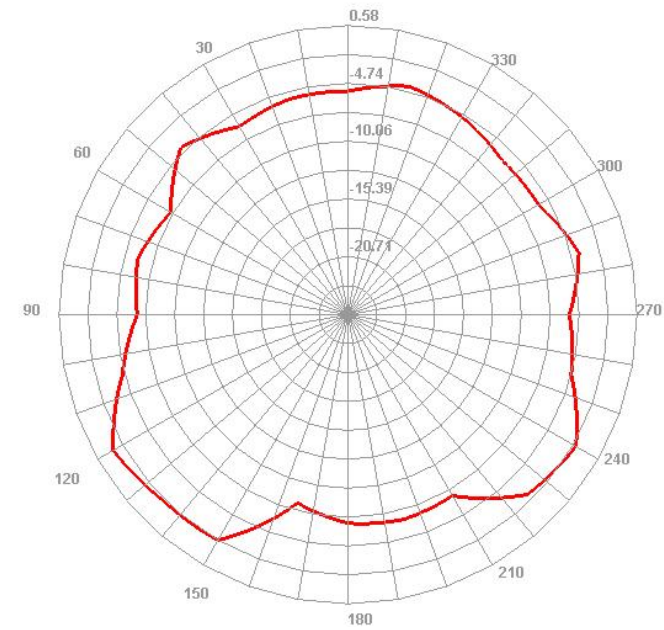
1850.000MHz H



1850.000MHz E1



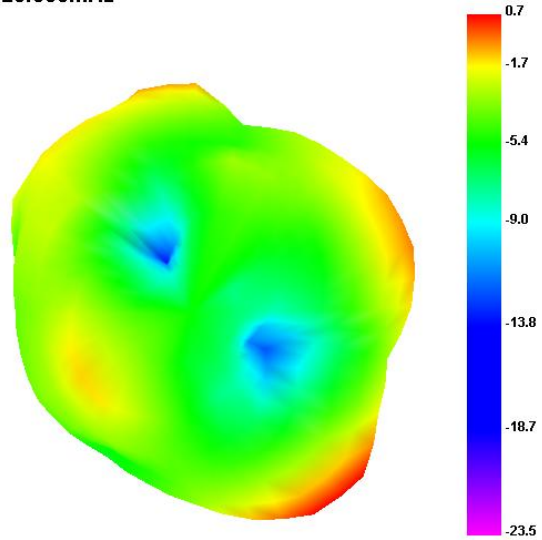
1850.000MHz E2



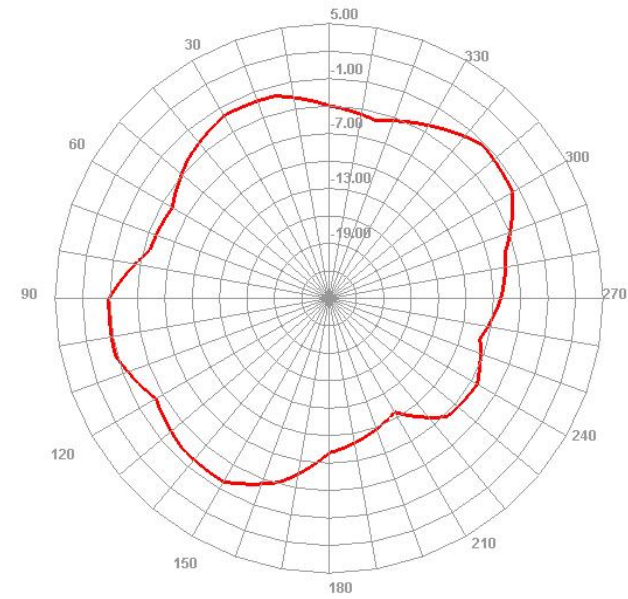
Efficient (W1 1920~2170Mhz)

Upper antenna

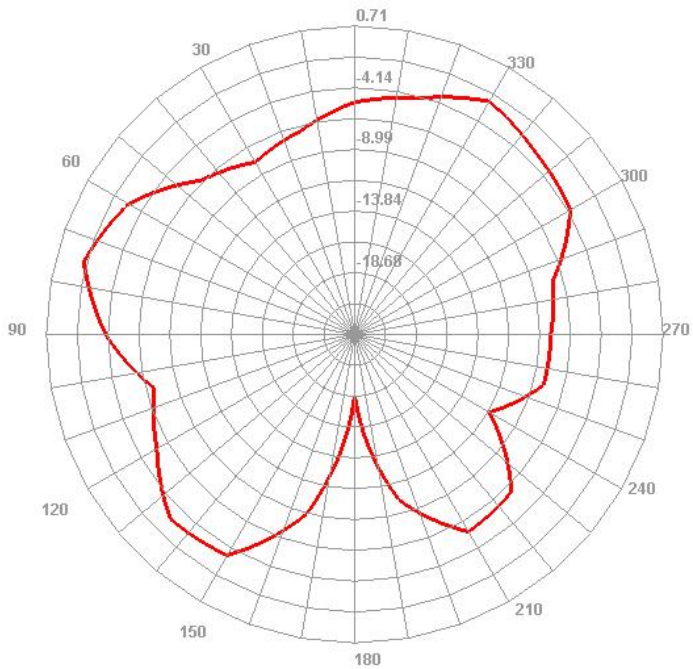
2020.000MHz



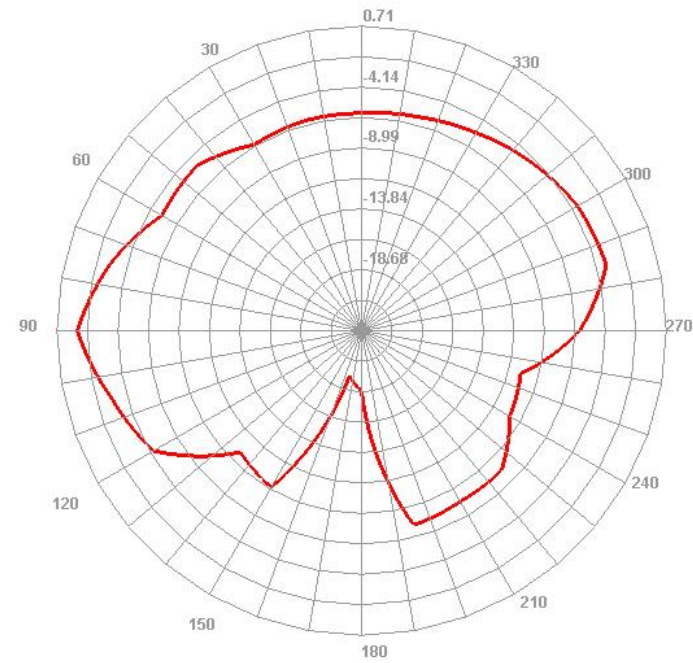
2020.000MHz H



2020.000MHz E1



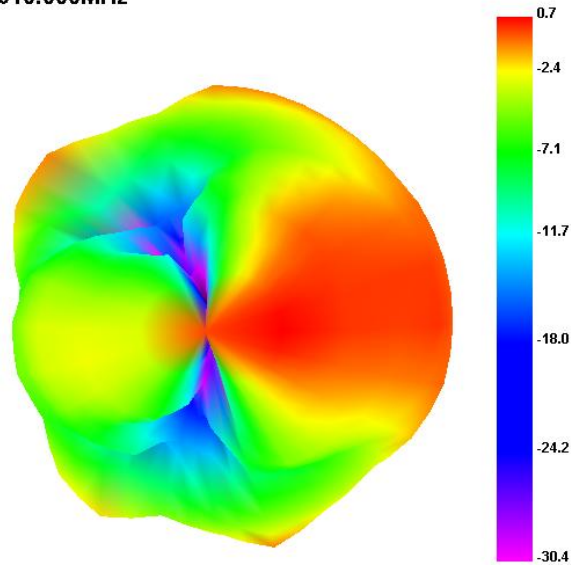
2020.000MHz E2



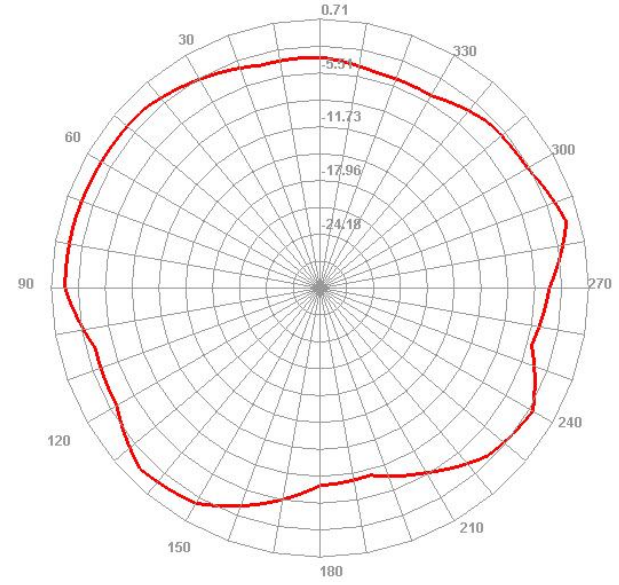
Efficient (LTE.B7 2500~2690Mhz)

Upper antenna

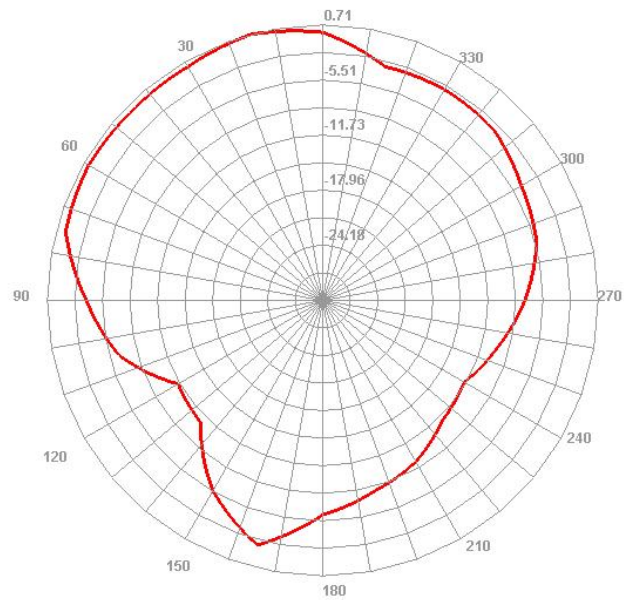
2610.000MHz



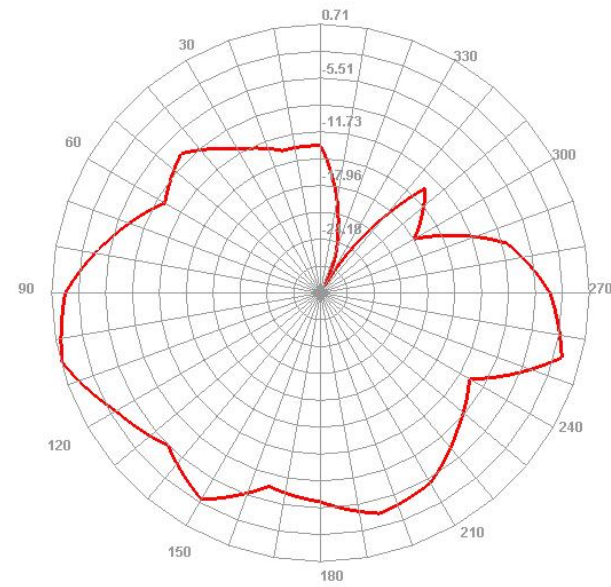
2610.000MHz H



2610.000MHz E1

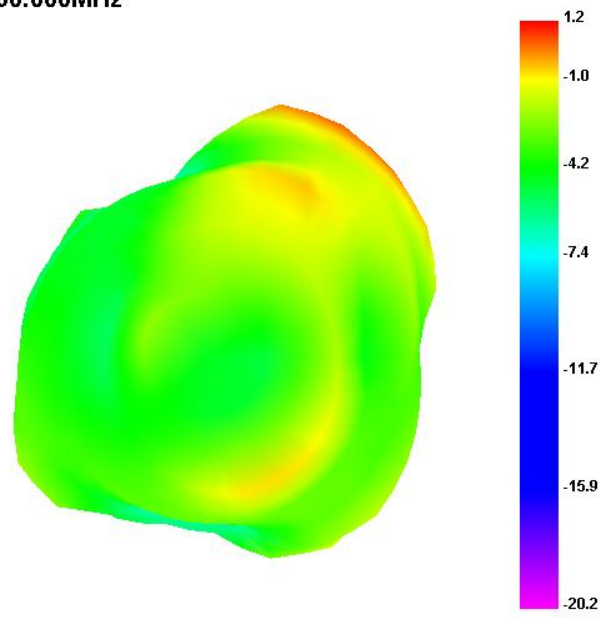


2610.000MHz E2

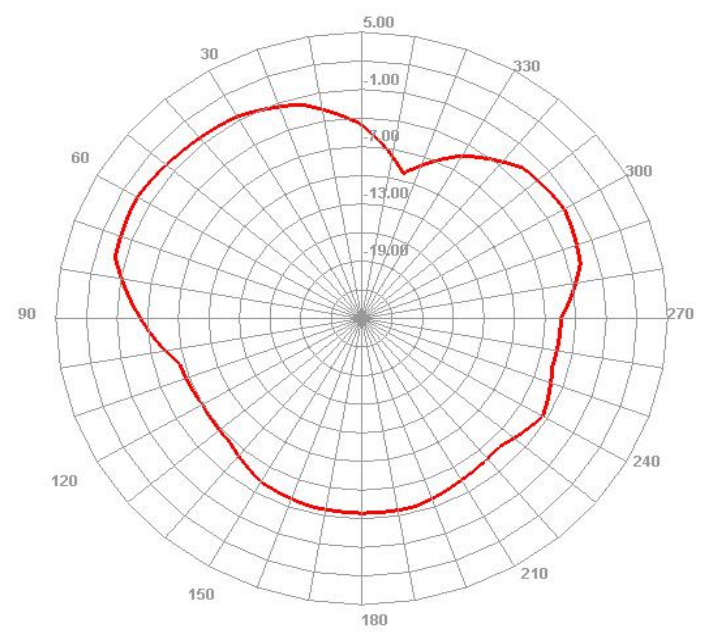


Efficient (2.4GWIFI/BT)

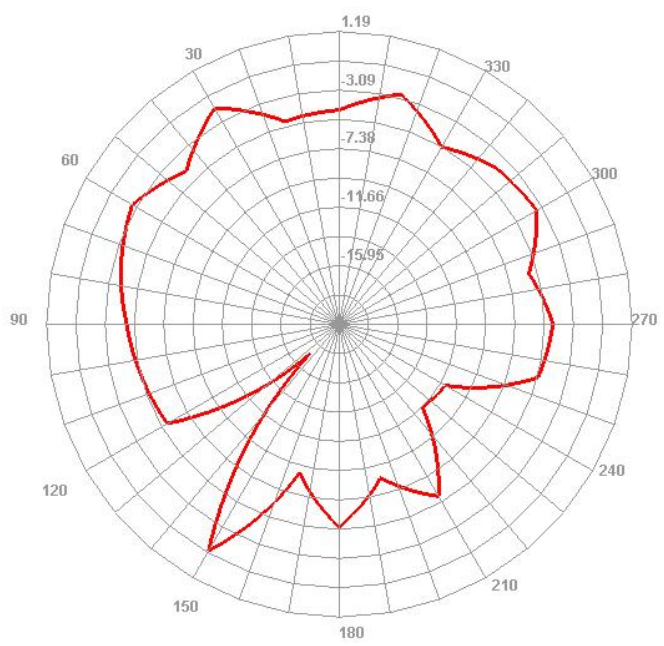
2460.000MHz



2460.000MHz H



2460.000MHz E1



2460.000MHz E2

