



# Astro 4 PRO

## User Manual

### Overview



- 1 Front Camera
- 2 Volume Keys
- 3 Power Key
- 4 Back
- 5 Home
- 6 Menu
- 7 Rear Camera
- 8 Flash

### SIM Card Installation

A SIM card contains your phone number and other necessary data. Your device has one SIM slot that supports 4G/LTE SIM cards.

#### To Install the SIM Card

- Make sure the device is turned off and the front facing down. Hold the firmly and use notch at the bottom corner to loosen cover. Use metal tool with a hard, thin edge such as your fingernail or a credit card to carefully run along the seam to loosen, then lift the cover until it detaches completely.
- Remove the battery if it is in. Locate the SIM card slot and insert the proper SIM card into the proper slot. For more information on SIM card installation check out the included SIM Card & Micro SD Card Installation Guide.
- To turn on/off a SIM card go to Settings > SIM management, then slide the SIM card slider. To turn on/off a SIM card's data connection, go to Settings > SIM management, click on the "Data connection" option, and select a SIM card that has 4G capability.



- Remove the battery if it is in. Locate the SIM card slot and insert the proper SIM card into the proper slot. For more information on SIM card installation check out the included SIM Card & Micro SD Card Installation Guide.
- To turn on/off a SIM card go to Settings > SIM management, then slide the SIM card slider. To turn on/off a SIM card's data connection, go to Settings > SIM management, click on the "Data connection" option, and select a SIM card that has 4G capability.

#### Keys/Touch Points

**Power Key:** To power on/off, press and hold power key for a few seconds on. When ON, press the power key once to activate or deactivate the screen.

**Home key (O):** Touch the key to return to the home screen. In idle screen, touch and hold the key to view recently accessed features.

**Options key (□):** In the home screen, touch the key to set wallpaper, manage apps, access to system settings. Touch it to view menu options.

**Back key (◀):** Touch to go back to the previous menu.

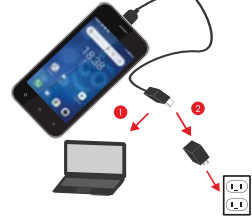
### Charging battery

New batteries are shipped partially charged. Before using your device, install and charge the battery. Batteries perform best after several full charge / discharge cycles.

#### Charging Your battery

- Please charge the battery using the following methods:
- Charge the phone by connecting it to a computer via the USB cable.
  - Connect the USB cable to the phone and the AC adapter. Plug the AC adapter into an electrical outlet to start charging.

As the battery charges, an icon will appear in the status bar of the home screen. When the battery is fully charged, a full battery icon appears on screen.



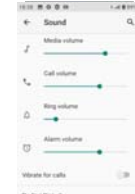
#### Warning:

- Do not remove the battery while the device is charging.
  - Use only the AC adapter & USB cable provided with your device.
- Note:** For safety, the battery will stop charging if in danger of overheating.

### Sound Profiles

#### Changing sound profiles

From the home screen, select "Settings." Go to "Sound" and change the Sound settings. For your Convenience, you may also select Volume, Vibrate for calls or Do Not Disturb options.



#### Screen timeout Mode

Turn on Screen timeout mode to save your battery power

- From the home screen, select "Settings"
- Select "Display"
- Select "Screen timeout" and choose a time interval from the list
- Click Done

#### Scheduled Power On/Off

1. From the home screen, select "Settings"

2. Select "Scheduled Power On/Off"

3. Click on "time" to change the time and day for the phone to turn on/off automatically.

#### Screen Lock

1. From the home screen, select "Settings"

2. Select "Security"

3. Select the desired type of lock & follow the prompts to set up

### Phone Features

#### Description Icons

Icons	Descriptions	Icons	Descriptions
	Shows the phone's network signal strength.		Show the phone's battery capacity.
	Speaker has been activated.		You have unread SMS.
	Cellular hold		USB storage turned on.
	The ringing type is set on Vibration.		Flight Mode
	4G LTE Data		3G network in use.
	You have missed call.		A clock alarm is active.
	In call		Bluetooth ON

#### Main Menu and Its Functions

Select to enter the main menu...  
Allows you to view list of features available in your phone.

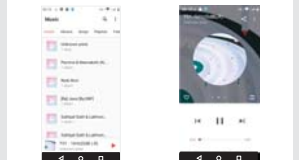
- Click**  
Allows you to set the Alarm from Clock.
- Chrome**  
Browse the internet. Search engine default set as Google®
- Calculator**  
Allows you to make tedious calculations quickly.
- Calendar**  
View the calendar & add events.
- Camera**  
Allows you to take pictures anytime you want. Your Astro 4 PRO has a 5 MP High Definition camera with LED Flash supporting many special features like Auto Focus & Face Detection which ensures you always take good quality pictures and stores them under the Gallery folder.
- In Camera**, easily choose Comcamer to record Video Files.
- Contact**  
To see your list of Contacts. Access phonebook through this function.
- Gmail**  
Allows you set up your POP/IMAP email accounts.

### Phone Features

- Gallery**  
Allows you to save and view photos or videos.  
-> **Google Play**  
Log in to your Gmail account to view applications & download from thousands of applications available on Google Play.

**Note:**  
To use this app please connect to an internet connection.

- Messaging**  
Allows you to view messages sent & received as a thread.  
11. **Music**  
View a list of songs available in your phone. View artist, albums, playlists & more.



- Phone**  
Allows you to make phone calls.  
13. **Files**  
You could install the files in APK format & also view your files.  
14. **File Locker**  
This service is provided by the operator. It provides many types of personalized messaging services.  
15. **Sound Recorder**  
Allows you to record sounds.  
16. **Videos**  
View a list of videos stored in the device.

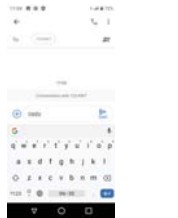
### Phone calls/Texting

#### To Make Phone Calls

- Touch the phone icon.
- Click on a contact from your contact list to make a call.

#### Composing text messages

The keyboard automatically corrects and suggests words as you type.

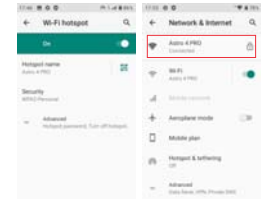


**Cut, Copy and Paste**  
Touch and hold text content to bring up the magnifying glass, and then slide your finger to move the insertion points. Then choose to cut, copy, or paste. It is very easy to copy text from web pages, email, or text messages.

### WiFi Direct

#### Turn on WiFi Direct

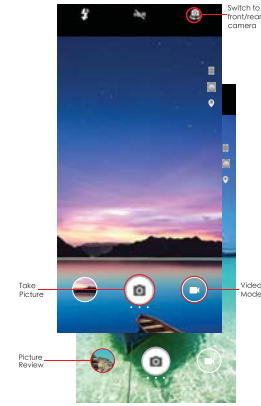
Maxwest supports WiFi Direct which allows Android™ to or later devices with the appropriate hardware to connect directly to each other via WiFi without an intermediate access point. Using the APIs, you can discover and connect to other devices when each device supports WiFi Direct, then communicate over a speedy connection across distances much longer than a Bluetooth connection. This is useful for applications that share data among users, such as a multiplayer game or file sharing.



- Enter "Settings" interface & click "More" in WIRELESS & NETWORKS. Then click "WiFi direct" to access WiFi direct feature. Then turn on the feature.
- After turning on the feature, click "Search" at the bottom and it will display the available devices.
- Click "Astro 4 PRO" (In this case specifically) and it will give you an option to connect.
- Click "Connect" to connect and it will pop up an interface to confirm like below.
- Click "OK" and the devices will be connected

### Camera

**Camera**  
Capture images or record videos and share with family and friends!



### Connecting to E-mails

#### Log into your e-mail accounts.

You may log-in to your e-mail accounts from the phone to access your e-mails.  
From the Home screen select "Email".  
Enter your email address, password and tap "Next".  
Select which type of email account you are setting up and complete settings (POP3/IMAP / Microsoft Exchange Account).  
Note: Photos taken with the camera will be saved under the "DCIM" folder. Screenshots captured will be saved under "Pictures" folder. Put Music files in the "Music" folder for the files to be played properly.

#### Compose new:

- Press MENU and select "Compose".
- Add recipients by typing a name or email address in the "To" field. Matching contacts will appear. Select a recipient or continue typing in the email address to send to multiple contacts.
- Once finished typing the mail, select "Send", "Save as draft", or "Discard".
- The reply tab contains "Reply", "Reply all" and "Forward" options.

#### Delete message:

- Go to Inbox to display messages.
- Touch & hold the message you want to delete.
- Select "Delete".

### File Transfer

#### Connecting Smartphone to PC

Connect the enclosed Micro USB cable to your smart phone and computer.  
Once connected successfully, on your phone, slide the top menu down and click on "USB connected", then, press "Turn on USB storage" button.  
A new storage named "Astro 4 PRO" will appear on your "My Computer". Click in it to review files in the smartphone and for to transfer documents between devices. When finished, press "Turn off USB storage" button on phone to disconnect.  
Note: Photos taken with the camera will be saved under the "DCIM" folder. Screenshots captured will be saved under "Pictures" folder. Put Music files in the "Music" folder for the files to be played properly.



#### Screen Capture

Press VolumeUp and power button at the same time to capture a Screenshots. All captured screenshots will be saved under gallery.



### Warning

- Any changes or modifications not expressly approved by the party responsible for compliance could void the user's authority to operate the equipment. This device complies with part 15 of the FCC Rules. Operation is subject to the following two conditions: (1) This device may not cause interference (2) This device must accept any interference, including interference that may cause undesired operation of the device.

**Note:** This equipment has been tested and found to comply with the limits for a Class B digital device, pursuant to part 15 of the FCC rules. These limits are designed to provide reasonable protection against harmful interference in a residential installation. This equipment generates, uses and radiates radio frequency energy and, if not installed and used in accordance with the instructions, may cause harmful interference to radio communications. However, there is no guarantee that interference will not occur in a particular installation. If this equipment does cause harmful interference to radio or television reception, which can be determined by turning the equipment off and on, the user is encouraged to try to correct the interference by one or more of the following measures:  
-Reorient or relocate the receiving antenna.  
-Increase the separation between the equipment and receiver.  
-Connect the equipment into an outlet on a circuit different from that to which the receiver is connected.  
-Consult the dealer or an experienced radio/TV technician for help.

SAR tests are conducted using standard operating positions accepted by the FCC with the device transmitting at its highest certified power level in all tested frequency bands, although the SAR is determined at the highest certified power level, the actual SAR level of the device while operating can be well below the maximum value, in general, the closer you are to a wireless base station antenna, the lower the power output.

Before a new device is available for sale to the public, it must be tested and certified to the FCC that it does not exceed the exposure limit established by the FCC. Tests for each device are performed in positions and locations as required by the FCC.

For body worn operation, this device has been tested and meets the FCC RF exposure guidelines when used with an accessory designed for this product or when used with an accessory that contains no metal and that positions the handset a minimum of 10mm from the body.

Non-compliance with the above restrictions may result in violation



# Astro 4 PRO