

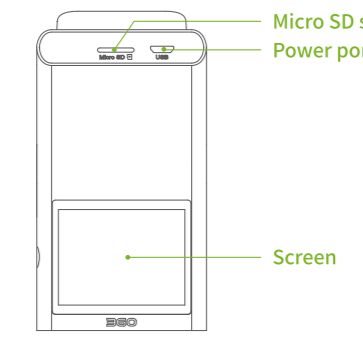
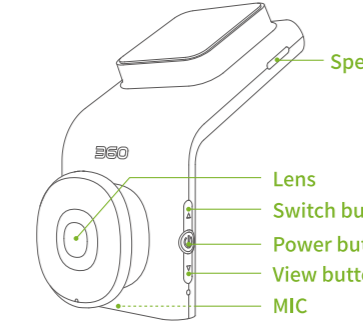
封面

G300

360 DashCam User Manual

- English P01
- French P16
- German P31
- Italian P46
- Russian P60
- Indonesian P77
- Thai P92

Product Overview



Packing List

- Please confirm that the camera is intact and fully equipped with accessories after opening the package.
- 1) Camera x1
 - 2) USB power cord x1
 - 3) Anti-static film x1
 - 4) User manual x1
 - 5) Installation tool x1
 - 6) Car power adapter x1

Functions Description

This part introduces all functions exhaustively. Please read it carefully and check it when problem happens.

1) Download APP

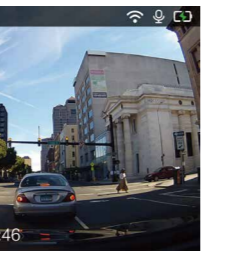
- 1) Scan QR code below by your cellphone to download.
- 2) Search "360 Dash Cam" in App stores or Google play and download it.



2) Connect camera

- Steps
- 1) Click "Setting" on the panel and open "WiFi Info".
 - 2) Search WiFi provided by the camera by your cellphone. Then connect the WiFi.
 - 3) Open 360 Dash Camera APP and click "add".
 - 4) You can see your videos and photos in the APP.

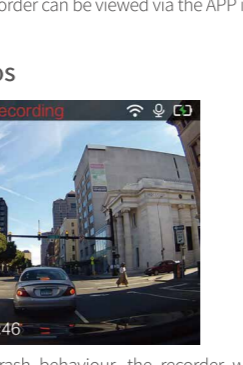
3) Driving videos



Put the home screen forward and tap the power switch in the middle of the left side of the device to turn it on.

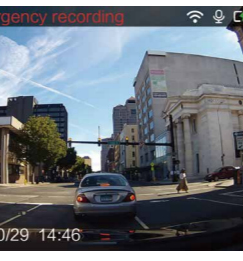
- 1) After start-up, the system will begin recording videos automatically.
- 2) In the video, tap the button on the top left of the device to switch between different display interfaces: Video, Time and Settings.
- 3) With the Wi-Fi connection, the mobile phone APP can connect the device through the Wi-Fi Hot Spot. After establishing a connection, the videos and photos on the recorder can be viewed via the APP in the mobile phone.

4) Emergency videos



When the system detects crash behaviour, the recorder will enter the emergency video recording mode. Each emergency video takes one minute. After completion, the photo album can be opened through Settings to view the emergency videos.

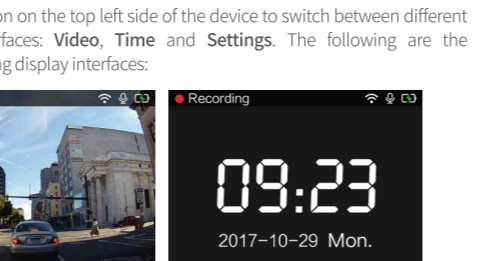
5) Parking mode



- 1) Press "Setting" button and select "Parking Mode". Dash cam will enter parking mode after engine is turned off.
- 2) When a car is externally hit, the device will automatically start the video recording in parking monitoring mode. It takes one minute and the videos are saved in Emergency videos.
- 3) When engine is restarted, dash cam will enter loop-recording mode automatically. If there is a video taken while parking, the camera will notify you to check new video and see if there is any damage of your car.
- 4) If a car is equipped with an uninterruptible power supply, the recorder will automatically enter parking monitoring mode after the car is stationary for ten minutes; when the car is restarted and driven, the recorder detects the continuous vibration and will automatically revert back to the video loop-recording mode.

Note: Constant power supply function will consume the power of your vehicle's battery. Use it wisely to avoid dead battery issue.

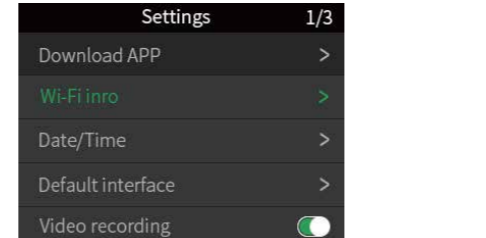
6) Display interface



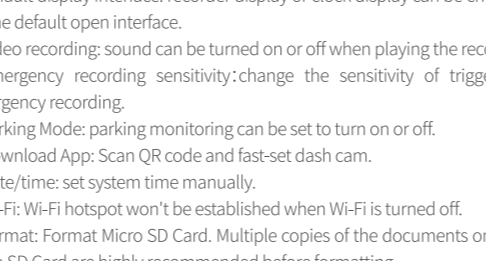
Tap the button on the top left side of the device to switch between different display interfaces: **Video**, **Time** and **Settings**. The following are the corresponding display interfaces:

- Recording
- Settings
- Download APP
- WiFi info
- Date/Time
- Default interface
- Video recording

7) Settings



8) Diagram of sticking position and power line installation for anti-static film



Tap the "Settings" button to set the recorder.

- 1) Default display interface: recorder display or clock display can be chosen for the default open interface.
- 2) Video recording: sound can be turned on or off when playing the recorder.
- 3) Emergency recording: sensitivity change: the sensitivity of triggering emergency recording.
- 4) Parking Mode: parking monitoring can be set to turn on or off.
- 5) Download App: Scan QR code and fast-set dash cam.
- 6) Date/time set: system time manually.
- 7) Wi-Fi: Wi-Fi hotspot won't be established when Wi-Fi is turned off.
- 8) Format: Format Micro SD Card. Multiple copies of the documents on the Micro SD Card are highly recommended before formatting.
- 9) Factory reset: factory reset won't delete videos saved on the Micro SD card.
- 10) About: Present Firmware version, Wi-Fi name and SN number will be shown under this item.

Precautions For Use Of The Recorder

- This product is a safe driving assistant (vehicle driving recorder) product. Our company has nothing to do with any failure, loss of information, or any loss incurred by the use of this product.
- This product is an auxiliary device for recording the external image of the vehicle. Some functions will not be supported due to the different driving environment and vehicle conditions. Unscheduled firmware upgrades to further improve the product will cause changes in product performance, and sometimes due to the different operating environment, it may not be able to record, so the driving images recorded by this product are for reference only. The state of the TF card can also lead to camera failure.
- Although this product can record and save the video of the vehicle accident, it does not guarantee that the accident images can be recorded. A minor crash cannot activate the crash sensor, so the image may not be recorded in the dedicated folder.
- Please be sure to turn off the power when inserting or unplugging the TF memory card.
- For product stability, format the TF card at least every two weeks.
- Generally the TF card has its service life, and long-term use may lead to the failure of data storage, in which case it is recommended to buy a new TF card for use. Our company is not liable for data destruction due to long-term use.
- Do not install or operate this product while the vehicle is running.
- Do not connect the uninterruptible power supply by yourself, otherwise it may cause automobile or product failure. Please consult with the professionals for installation matters.
- If this product is directly connected to the vehicle power supply system, do not use this product for a long time when the engine is not started, otherwise it will lead to the loss of the vehicle battery.
- This device may interfere with the function of the medical device that is not properly protected. If there is a problem or uncertainty about whether the medical device can shield external radio frequency energy, please consult the doctor or the manufacturer of the medical device.
- Do not subject this product to strong shock or vibration, so as not to damage the product, and result in malfunction or unusable conditions.
- Please stop using this product before cleaning and maintenance.
- Do not use chemical solvents or cleaning agents to clean this product.
- Do not disassemble or modify this product by yourself.
- The ambient temperature range for normal use of this device is -20°C to 65°C, beyond which the product may malfunction, ignite or explode.
- Please use it to the extent permitted by law.

Precautions For Use Of The Charger

- When the product is charging, the power outlet should be installed near the product and should be easily accessible.
- When the charging completes or the product is not charging, please disconnect the charger from this product and unplug the charger from the power outlet.
- Do not drop or hit the charger. If the charger housing is damaged, please contact the after-sales service center for replacement.
- If the charger plug or power line is damaged, do not continue to use it in case of electric shock or fire.
- The charger is not waterproof. Do not use it in the kitchen, bathroom and other high temperature and humidity places, otherwise it will lead to electric shock, fires and other hazards or damage the charger.
- Do not short circuit, dismantle or modify the charger, otherwise it will cause personal injury, electric shock, fire and other hazards or damage the charger.
- Do not touch the power line, product or charger with wet hands in case of short circuit, breakdown or electric shock.

Precautions For Use Of The Battery

- Do not dismantle or modify the built-in battery by yourself, so as not to damage the battery, generate heat and cause fire.
- Do not throw the battery into the fire or place it in a hot place, or it will cause a fire or explosion.
- Do not use the battery for other purposes.
- Do not use any damaged charger or battery.
- If the battery is too high, deformed, discolored, bulged, leaked and has other abnormal phenomena in the process of use, charging or storage, please stop using and contact the after-sales service center to replace the battery, so as not to cause security problems.

Trouble Shooting

Scenario	Fault phenomenon	Reason/solution
Installation process	The image is blurry	The light transmission of insulation film in the lens is not uniform, and the recording effects in the daytime and at night are different.
	The recorder is powered off frequently	The car types are different. Please adjust the rotation angle of the car charger appropriately to avoid the positions with loose structure lamp is on; if not, unplug and re-plug the car charger every time you use. Please connect USB power line. Press the power button for 10s to troubleshoot the recorder. Press the power button again for mode.
Start-up process	The recorder cannot be started	1. Press the power button again for restart. 2. Adjust TF memory card (Class 10 TF memory card is recommended).
	The boot screen stops: the screen is black, the battery at 4.4v no indication	1. Press the power button again for restart. 2. Adjust TF memory card (Class 10 TF memory card is recommended).
Video recording process	Video recording does not stop automatically after being started	1. Check if Micro SD card is inserted. 2. Check and re-plug TF memory card after power-off. 3. Format TF memory card or replace it. 4. Format TF memory card is recommended.
	Video recording stops abnormally	1. Press to manually start video recording. 2. Format TF memory card or replace it. 3. Format TF memory card is recommended.
Video recording process	The screen is black	In case of no operation within 60s during video recording, the recorder will automatically turn off its screen. The screen will turn on by pressing any button. The above phenomenon is normal.
	The video has no sound	1. Check if the silent mode is closed (check if the mute icon is shown in the upper right corner of the screen). 2. During audio recording, press to start or stop the audio recording function.
Video recording process	The image is blurry	Connect the recorder with APP, and the system will automatically correct the recording time when the connection is re-established.
	The recording time is wrong	1. Check if the lens protector is removed. 2. Check if there is dirt on the windshield or the recorder lens.
Computer connection process	External storage device cannot be accessed	The attached USB power cable can only be used for charging, and cannot realize data transmission for the computer. Please use other USB data transmission line.

Explanation Of Contents Of Hazardous Substances

Toxic and harmful substance	Item			
	Plastic Shell	PCB	Power Cable	Battery
Lead (Pb)	○	○	○	○
Mercury (Hg)	○	○	○	○
Cadmium (Cd)	○	○	○	○
Chromium VI (Cr(VI))	○	○	○	○
Polybrominated biphenyls (PBB)	○	○	○	○
Polybrominated diphenyl ethers (PBDE)	○	○	○	○

Environmental protection period (PBB, PCB, PB, 10 years, power cable 10 years, battery 5 years, EPP refers to the protection period of the items under the product under instructed application conditions.)

○ The content of the substance in all homogeneous materials of this part is lower than the limit specified in SJ/T11363-2006 standard.

× The content of the substance in all homogeneous materials of this part is higher than the limit specified in SJ/T11363-2006 standard.

Attention And After-Sales Service

- I. Introduction and declaration of after-sales service**
- Thanks for choosing 360 dash cam. Please use accessories provided by the original manufacturer to avoid unexpected damages. If you fail to use the product according to the correct procedures or connect with incompatible accessories, warranty may automatically become invalid, and even safety of you and others may be endangered. Our company will not assume any responsibilities arising from this.
 - If you dismantle or change the product housing, the warranty will also become invalid.
 - Our company, based on the principle of constant improvement and sustainable development, can modify and improve the product manual without advance notice to the users.
 - Unless otherwise specified in applicable laws, the manual contents are provided according to product conditions during manufacturing. Otherwise, no explicit or tacit warranty of any type is made for correctness, reliability or contents of the files.
 - The product manual is protected by the copyright law. Copying, transmission, distribution and use of other forms are forbidden without approval of 360 in writing.

II. Service policies within the warranty period of 360 dash cam

1. This product contains one-year warranty. For detail of warranty service, please kindly contact local authorized distributors.
2. The warranty period of power adapter and charger cable is 12 months, and of battery is 6 months.
3. Non-electronic accessories are not covered by the warranty.

III. Charged maintenance policies of 360 recorder product

- For any of the following cases, the 360 Company or its authorized service centers will implement reasonable charged maintenance for those outside the scope of the warranty.
1. Exceeding the valid warranty period.
 2. No warranty certificate or valid invoice. The warranty certificate is not in accordance with the model and marking of the product, or has been altered.
 3. Damage due to use, repair and maintenance by not following the requirements in the User Manual. Damage or malfunction due to personal removal, maintenance or modification of system software without the authorization of the 360 Company.
 4. Collision, soiling, breaking or burning of the printed circuit board.
 5. Cracking or damage of the outer shell, LCD screen, antenna, etc. of the 360 recorder during use, excluding that due to structural or material factors.
 6. Damage due to force majeure.

RF Exposure Information:

This equipment complies with FCC radiation exposure limits set forth for an uncontrolled environment. This equipment shall be installed and operated with minimum distance 20cm between the radiator & body.

Contact Us

Website: www.360martai.com
 Email: support@360martai.com
 Facebook: @360martai

FCC Statement

This equipment has been tested and found to comply with the limits for a Class B digital device, pursuant to part 15 of the FCC Rules. These limits are designed to provide reasonable protection against harmful interference in a residential installation. This equipment generates, uses and can radiate radio frequency energy and, if not installed and used in accordance with the instructions, may cause harmful interference to radio communications. However, there is no guarantee that interference will not occur in a particular installation. If this equipment does cause harmful interference to radio or television reception, which can be determined by turning the equipment off and on, the user is encouraged to try to correct the interference by one or more of the following measures:

- Reorient or relocate the receiving antenna.
- Increase the separation between the equipment and receiver.
- Connect the equipment into an outlet on a circuit different from that to which the receiver is connected.
- Consult the dealer or an experienced radio/TV technician for help.

Caution: Any changes or modifications to this device not explicitly approved by manufacturer could void your authority to operate this equipment.

This device complies with part 15 of the FCC Rules. Operation is subject to the following two conditions: (1) This device may not cause harmful interference, and (2) this device must accept any interference received, including interference that may cause undesired operation.

Warranty Card

1) User Information

Name _____ Tel _____

E-mail _____ Post Code _____

Address _____

2) Product Information

Color _____

SN _____

3) Repair Record

Service Record	Fault Information	Service Date	Signature