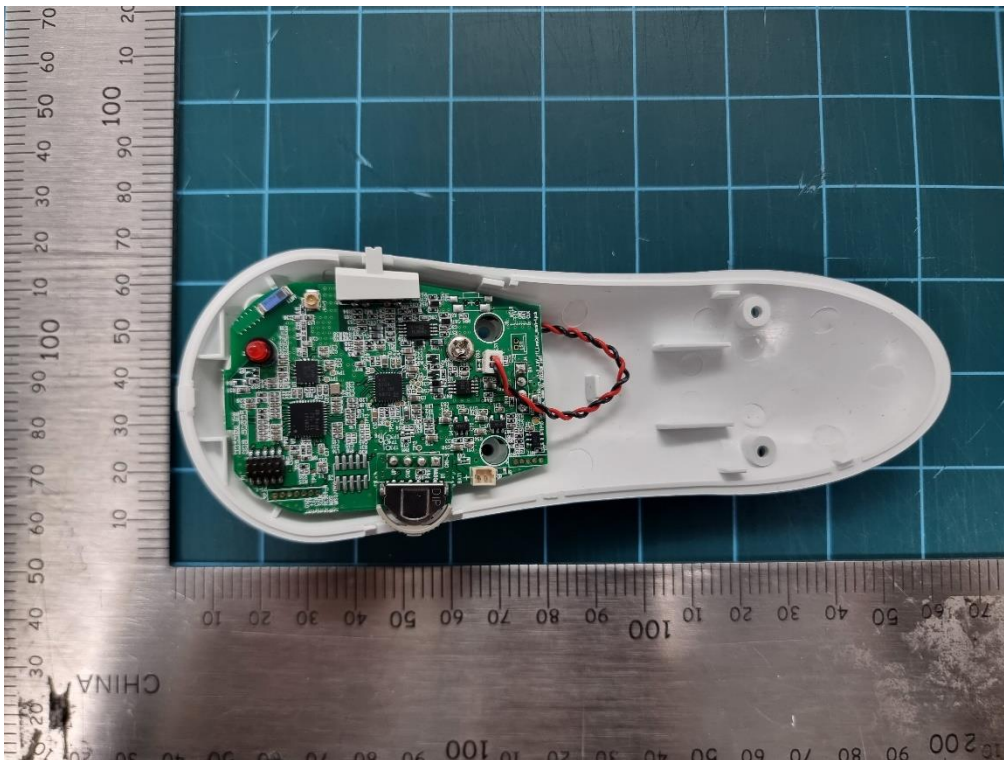


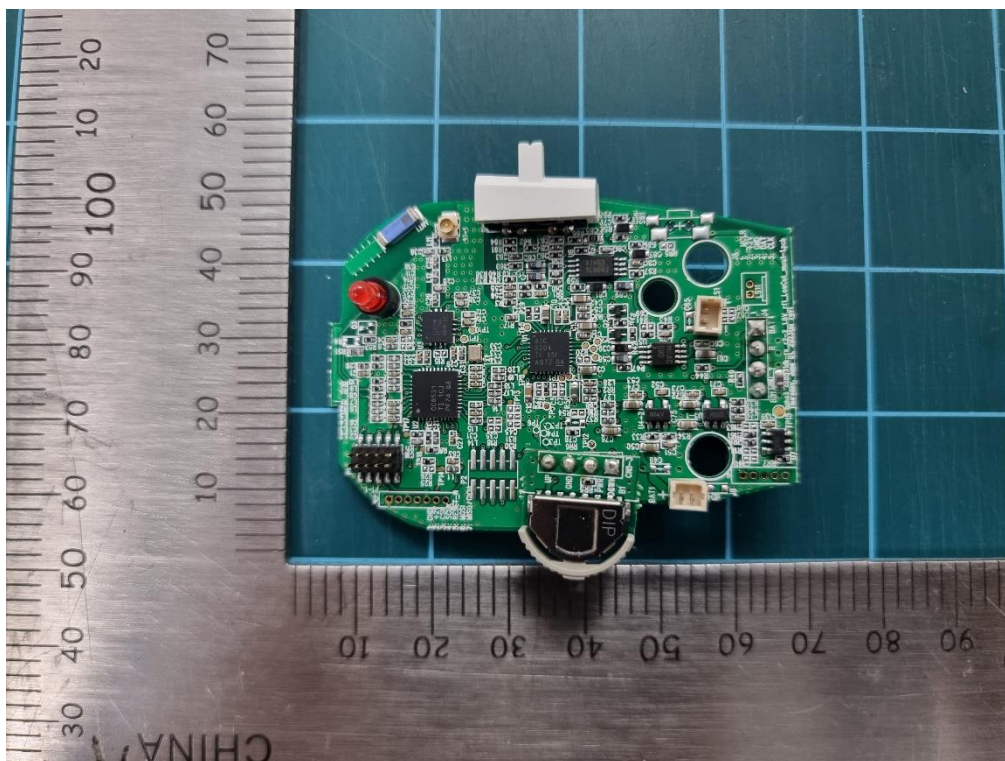
Photograph of EUT(Internal) – KHA-670R (Basic Model)



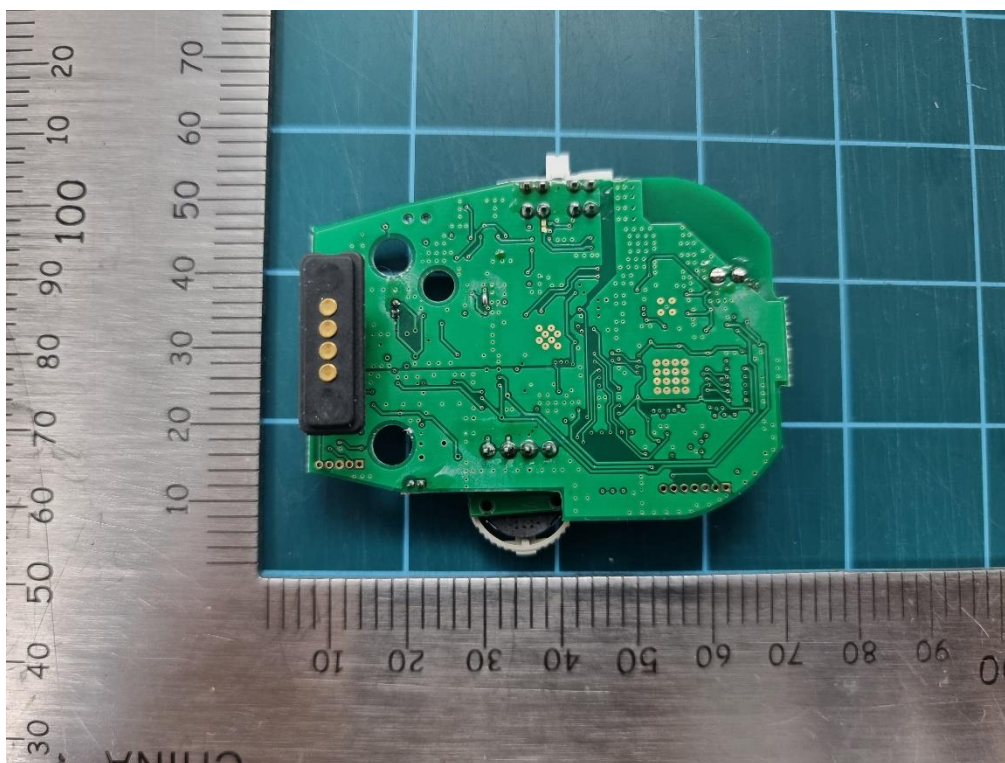
Internal 1



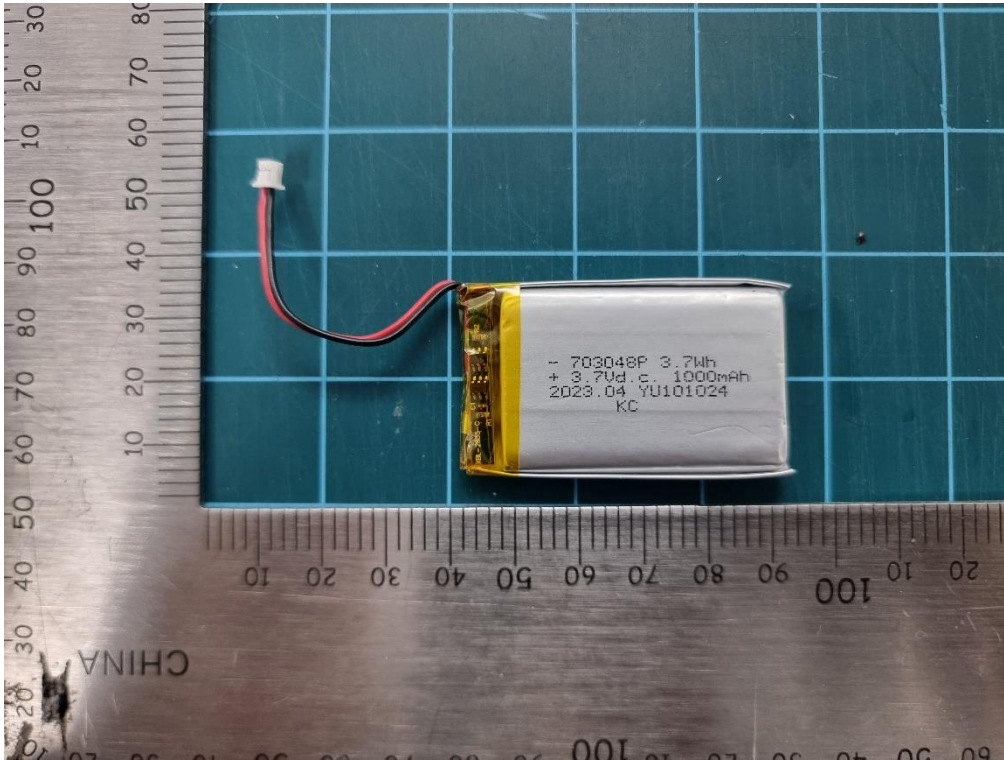
Internal 2



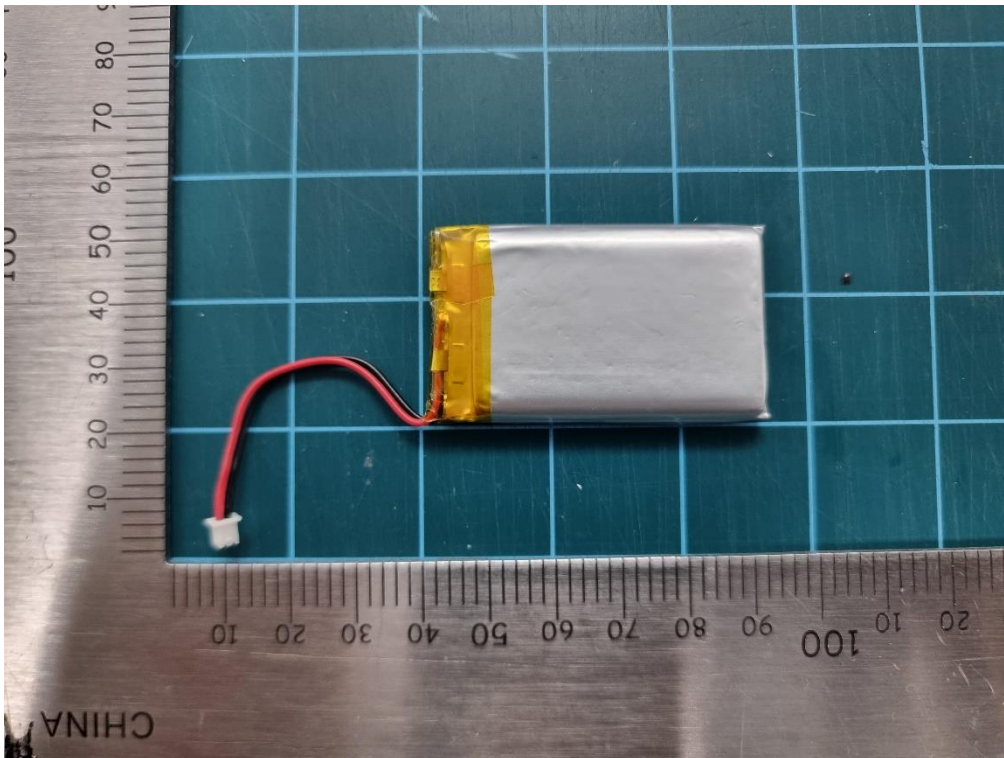
Top of PCB



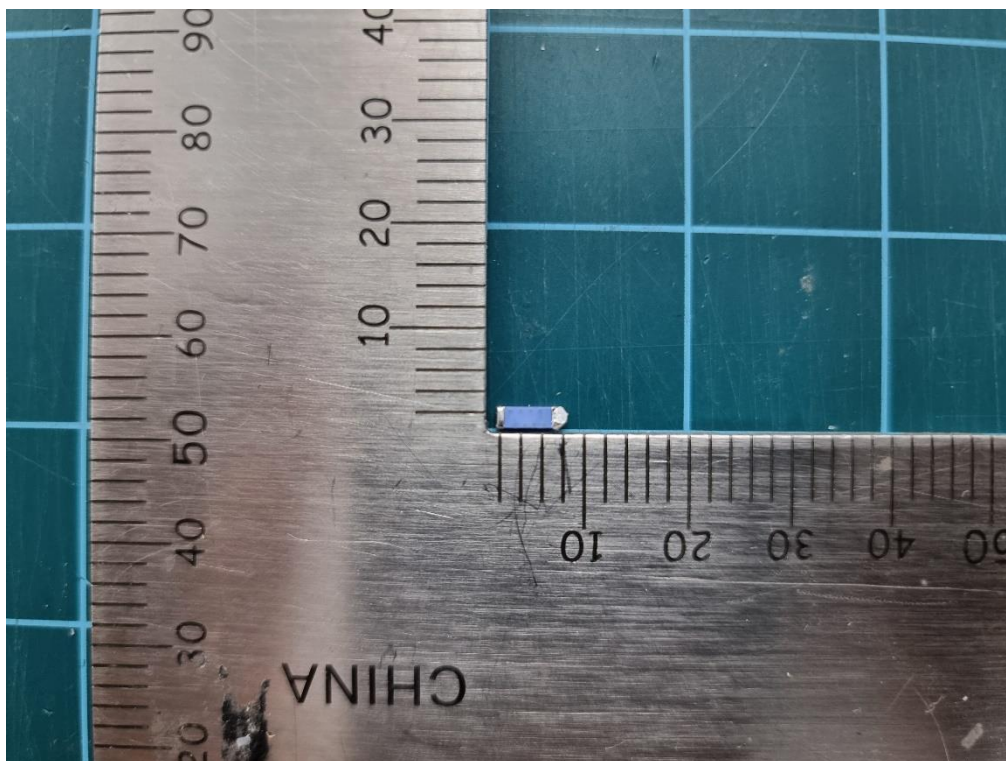
Bottom of PCB



Top of Battery

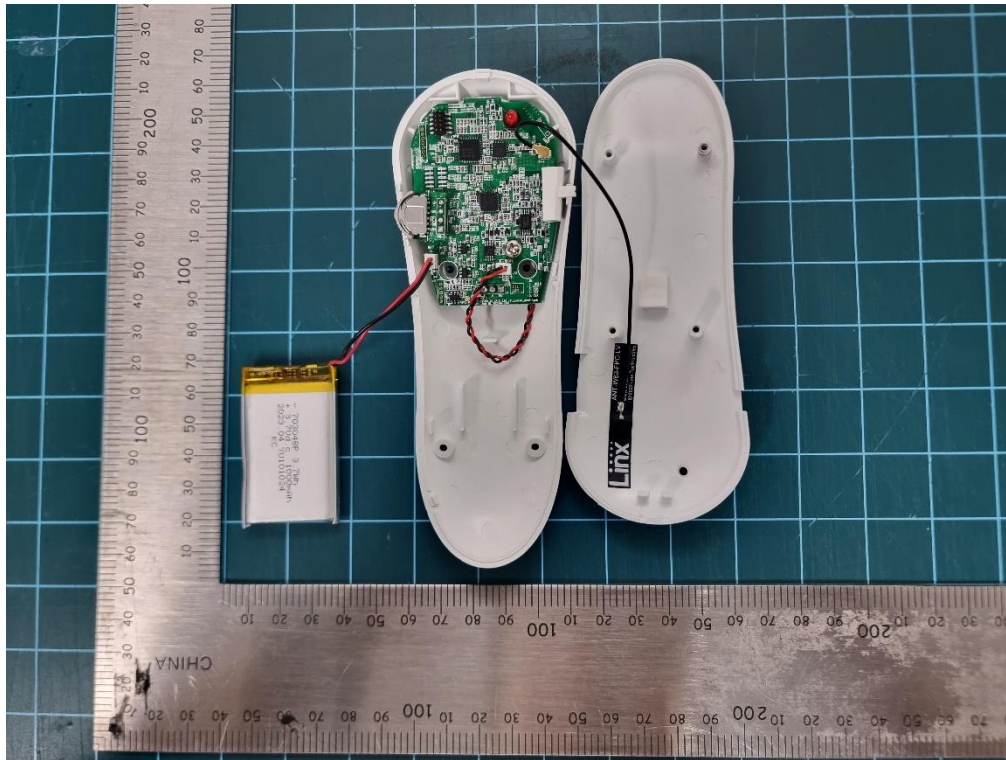


Bottom of Battery



Antenna

Photograph of EUT(Internal) – KHA-670R-1 (Family Model)

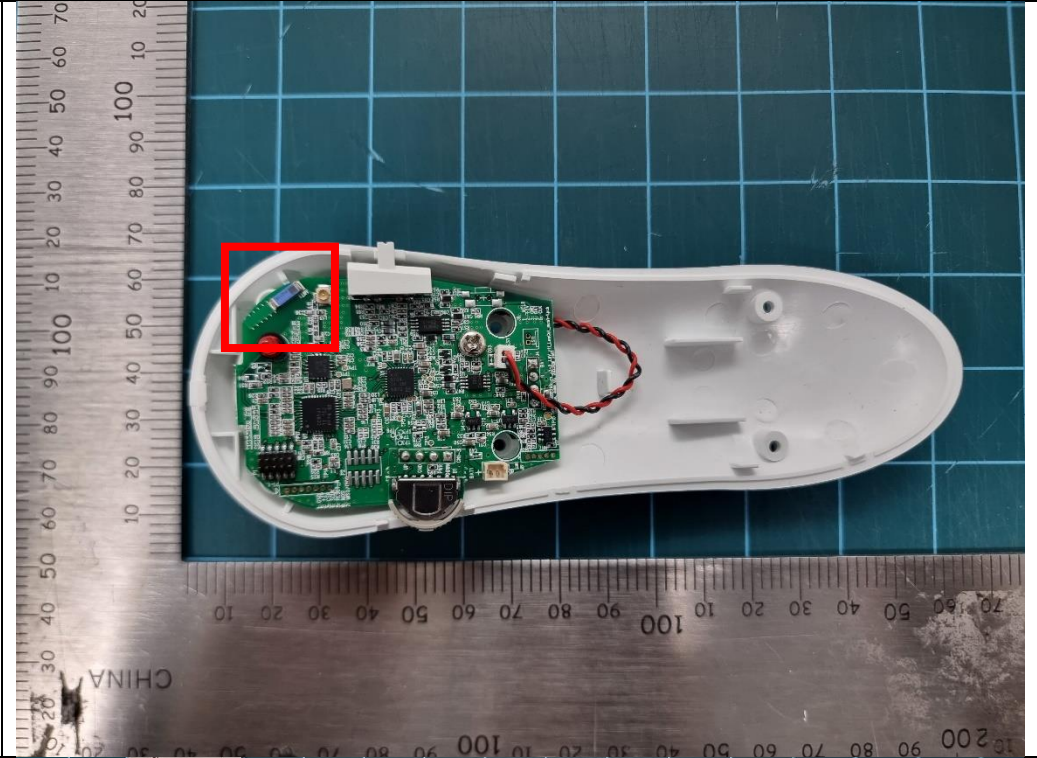



Internal 1



Antenna

Differences Between Models

<p>KHA-670R ANT 1: Chip Antenna</p>	 <p>The image shows the internal components of the KHA-670R device. A green PCB is mounted inside a white plastic housing. A small chip antenna is highlighted with a red box. A ruler is visible on the left side of the device for scale.</p>
<p>KHA-670R-1 ANT 2: FPC Antenna</p>	 <p>The image shows the internal components of the KHA-670R-1 device. A green PCB is mounted inside a white plastic housing. A yellow battery is visible on the left. An FPC antenna is highlighted with a red box. A ruler is visible on the left side of the device for scale.</p>