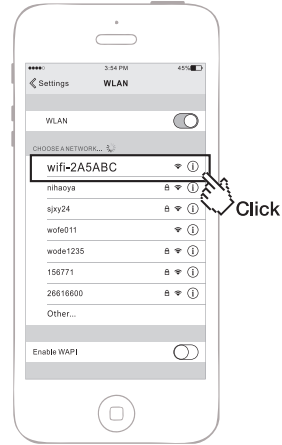


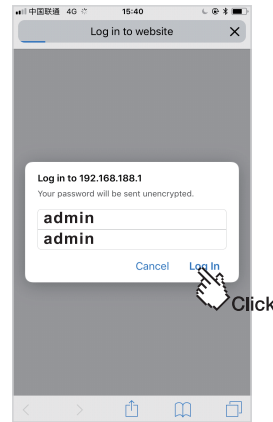
# for phone

1. Connecting to the signal of "wifi-2A5ABC".



Tips: "wifi-" is a default value, 2A5ABC is the last 6 number of the MAC Address (each product has a MAC number stuck on the back.)

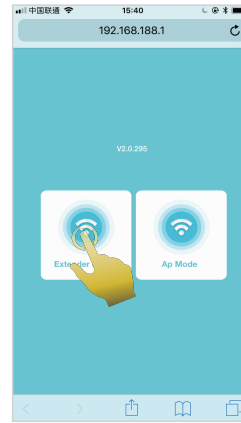
2. Run any Web browser.  
Type **192.168.188.1** in the web browser, Reach to the Login website.



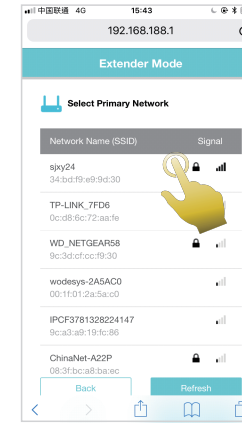
Input the information of  
**User Name: admin**  
**Password: admin**  
Click "Log In"

## Extender Mode ☆☆☆☆☆

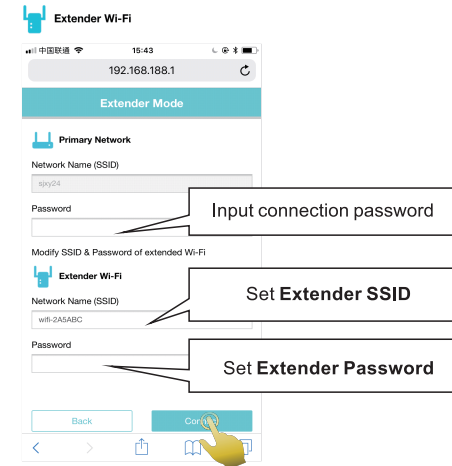
1. Click "Extender Mode".




2. Choosing the Wifi signal you want to connect.



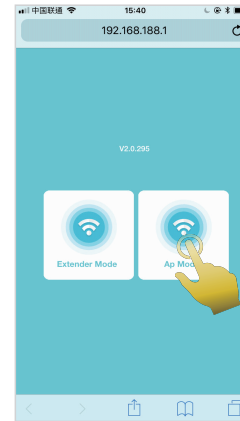
3. Input the SSID Password in the Primary Network  
Input the SSID and Password you want in the



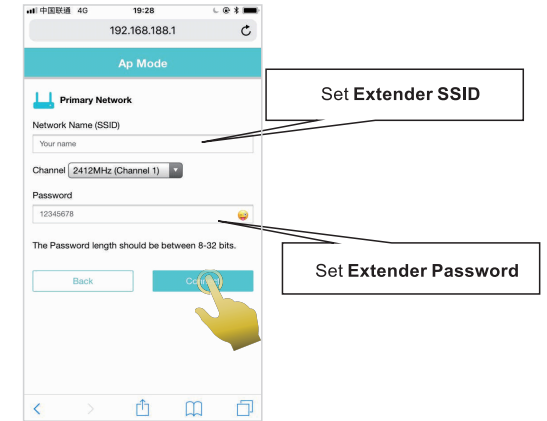
The led light  will light up, that means it Extender Mode successfully.  
then you connecting to the NEW Extender SSID

## AP Mode ☆☆☆☆☆

1. Click "AP Mode".



2. Input the SSID and Password you want.



Insert the NETWORK cable in the RJ45 port  
then you connecting to the NEW Extender SSID

## User manual

WiFi make your life easier

Hardware Interface	Description
Reset Button	WPS function: Step 1: Open the primary router WPS function Step 2: Press WIFI Repeater RESET button 2 seconds then release, it becomes client mode and can be repeated the primary routers automatically Reset function: Press RESET button till 8 seconds then release, it becomes factory default mode
LAN Port (RJ45)	For cable connection to the primary router

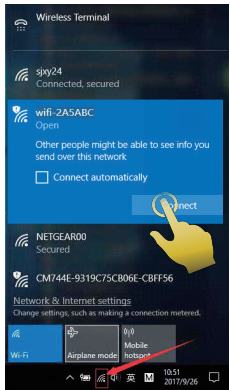
## Set for PC (Win10)

Extender plug it into the socket .

### -Network cable connection -

Insert the cable to the RJ45 interface of repeater , and insert another port of the cable to the PC internet interface.

### - Wireless connection -



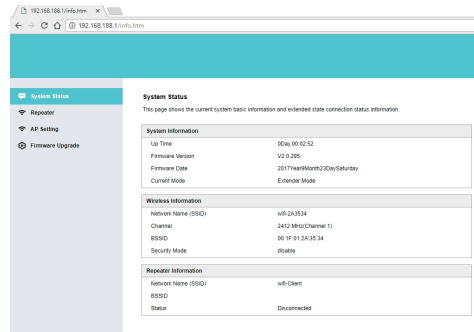
Click from the Taskbar on the PC, choosing "wifi-2A5ABC" and connecting it.

Tips: "wifi-" is a default value, 2A5ABC is the last 6 number of the MAC Address (each product has a MAC number stuck on the back.)

1. Open a browser and input **192.168.188.1** to make a connection. Input the following information, and then click Log In.

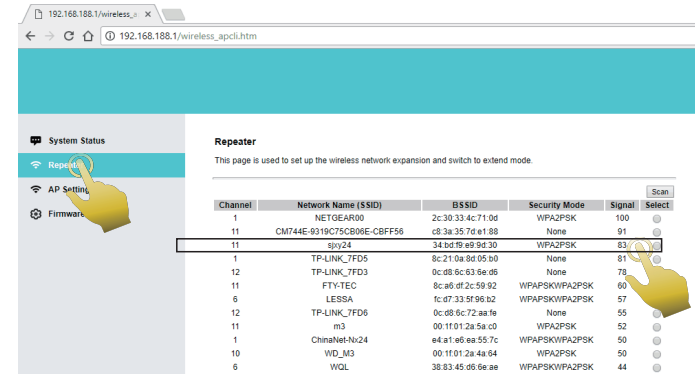


2. Reach to the main interface of the product.

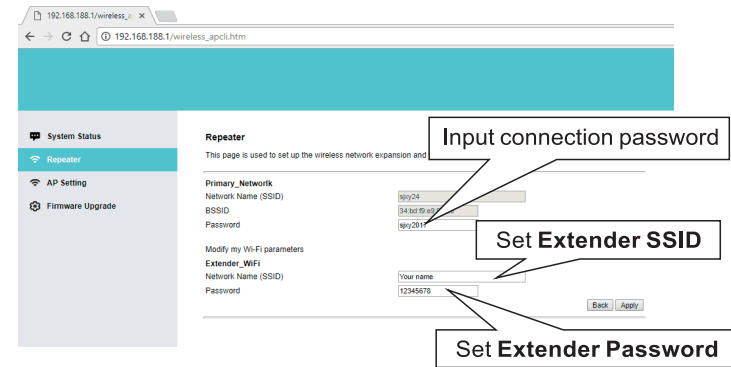


## Extender Mode ☆☆☆☆☆

1. Click **Repeater** and choosing the WiFi signal you want. ( for example "sjsy24")



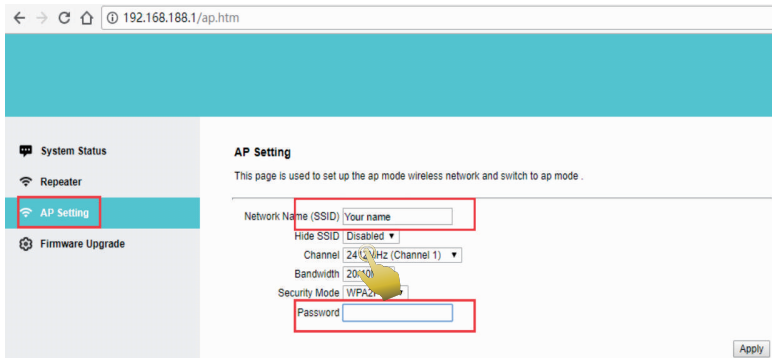
2. Input the key of the WiFi you connected ( for example "sjsy24") in Password of Primary\_Network; Input what you want to set in Network Name (SSID) & Password of Extender\_WiFi. Then click Apply.



The led light will light up, that means it Extender Mode successfully.then you connecting to the NEW Extender SSID

## AP Mode ☆☆☆☆☆

1. Click **AP Setting** and input what you want to set in Network Name(SSID); Choosing "WPA2PSK" in Security Mode, and input the key you want in Password, and then click Apply.



Insert the NETWORK cable in the RJ45 port, then you connecting to the NEW Extender SSID



**NOTE**

If you can't enter to the setup page of the repeater even if you had connected the Extender Mode & AP Mode successfully, you need to do the followings.

**Press the Reset button for 8 seconds (resume factory settings).**

This device complies with Part 15 of the FCC rules. Operation is subject to the following two conditions: 1) this device may not cause harmful interference, and 2) this device must accept any interference received, including interference that may cause undesired operation.

Note: This equipment has been tested and found to comply with the limits for a Class B digital device, pursuant to part 15 of the FCC Rules. These limits are designed to provide reasonable protection against harmful interference in a residential installation. This equipment generates uses and can radiate radio frequency energy and, if not installed and used in accordance with the instructions, may cause harmful interference to radio communications. However, there is no guarantee that interference will not occur in particular installation. If this equipment does cause harmful interference to radio or television reception, which can be determined by turning the equipment off and on, the user is encouraged to try to correct the interference by one or more of the following measures:

- Reorient or relocate the receiving antenna.
- Increase the separation between the equipment and receiver.
- Connect the equipment into an outlet on a circuit different from that to which the receiver is connected.
- Consult the dealer or an experienced radio/TV technician for help.

Changes or modifications not expressly approved by the party responsible for compliance could void the user's authority to operate the equipment.

#### FCC Radiation Exposure Statement

This device complies with FCC RF radiation exposure limits set forth for an uncontrolled environment. This transmitter must not be co-located or operating in conjunction with any other antenna or transmitter.

This device must operate with a minimum distance of 20 cm between the radiator and user body.