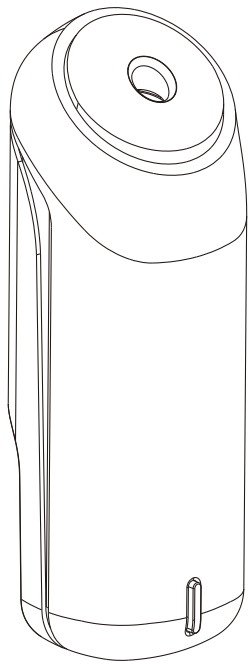


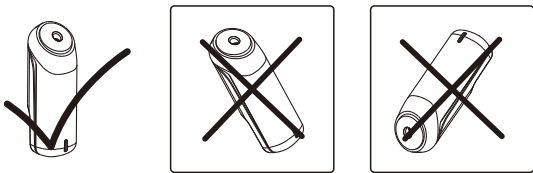
PRODUCT MANUAL

SCENT MARKETING



USE WARNING

1.When inserting the oils bottle,please keep the machine vertical.Tilt or lie flatly may cause oil overflow and then destroy the machine.



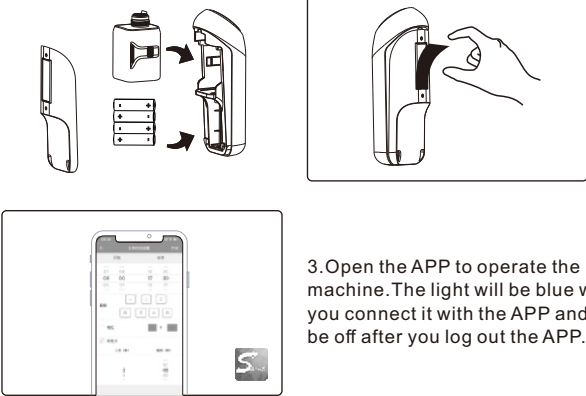
- 2.This product is only suitable for supporting essential oils. Once run out of the oils, kindly contact your supplier for another bottle of oils.
- 3.Shall not modify, disassemble or repair the machine.
- 4.Do not use this product under high humidity and high pressure conditions.
- 5.It is better to screw the machine on the wall than just stick it via tape; otherwise, the machine will be easy to fall down.

PRODUCT PARAMETERS

Product:	A804
Dimension:	206*68*68mm
Materials:	PP
Input voltage:	3.0V
Bottle capacity:	150ml
Accessories:	diffuser,bottle,screws, double-sided tape
Coverage:	50-80m ²

OPERATION STEPS

- 1.Install AA (Alkaline) batteries and insert the oils bottle.
- 2.Remove cover of the tape and stick machine on wall,elevator, etc. (Better to screw the machine on the wall to avoid falling down.)



3.Open the APP to operate the machine. The light will be blue while you connect it with the APP and will be off after you log out the APP.

WORKING PARAMETERS

	G1	G2	G3	CUSTOMIZE
Working time	5S	5S	5S	3-5S
Interval time	10min	7min	3min	30-600S

TROUBLESHOOTING

Before having the machine repaired,please try to diagnose the problem first with the bellow instructions

Symptom	Remedy
Does not diffuse	-Check whether oils bottle and battery are installed correctly. -Check if the battery is exhausted. -Check whether the cotton stick has hardened or is black
Oil overflow	-Check if the essential oil bottle has cracked -Ensure that the machine is vertical. -Do not force the oil bottle into the machine
Blue/Red light flashing	-Check whether the batteries are in the right place. -Change new Batteries when the red light is flashing (low battery)
Failed to connect the APP	-Check whether Bluetooth is on at your ceilphone -Check whether the batteries have enough power -Check whether another ceilphone has connected the machine

APP OPERATION INSTRUCTIONS

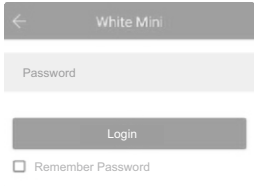
1.Please search "scent marketing" in Google play or App store for the APP(application).



2.Turn on the Bluetooth as well as the APP,and then click the name of device (White Mini) to process the connection.



3.Input the password "8888" to login



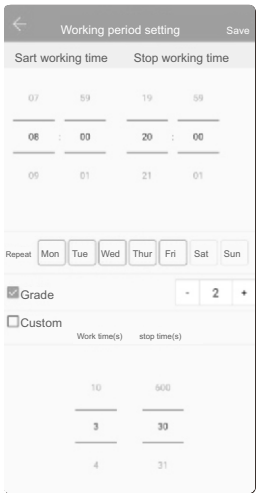
4.After entering into the main interface, you can amend device's name, mark the location, ect.and then click "save" to save the modification.



5.Working period setting:

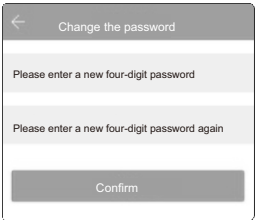
- Choose the starting time and stopping time of the period as well as the repeated day.
- Then, choose factory preset intensities (G1-G3) or have customized setting on working time and interval time.
- Click "save" to get it done.

Ps: There are 5 working periods available to be set.



6.Change password:

- Click "about" and then "Change password" to customized the new password.



Ps: If you forget the new password, press the reset button to restore the factory one "8888"

FCC Warning Statement Changes or modifications not expressly approved by the party responsible for compliance could void the user's authority to operate the equipment. This equipment has been tested and found to comply with the limits for a Class B digital device, pursuant to Part 15 of the FCC Rules. These limits are designed to provide reasonable protection against harmful interference in a residential installation. This equipment generates uses and can radiate radio frequency energy and, if not installed and used in accordance with the instructions, may cause harmful interference to radio communications. However, there is no guarantee that interference will not occur in a particular installation. If this equipment does cause harmful interference to radio or television reception, which can be determined by turning the equipment off and on, the user is encouraged to try to correct the interference by one or more of the following measures:

- Reorient or relocate the receiving antenna.
- Increase the separation between the equipment and receiver.
- Connect the equipment into an outlet on a circuit different from that to which the receiver is connected.
- Consult the dealer or an experienced radio/TV technician for help.

This device complies with part 15 of the FCC Rules. Operation is subject to the following two conditions: (1) This device may not cause harmful interference, and (2) this device must accept any interference received, including interference that may cause undesired operation.