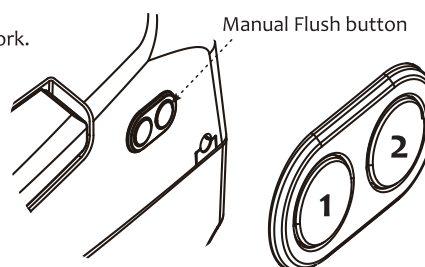


Functions & Operation





Manual Flush

※ Follow the procedure below to run the flushing function in the event of a power outage or remote control does not work.

1. Press the 1 of Rim button for 4 seconds.
2. Press the 2 of Jet button for 4 seconds.
3. Press the 1 of Rim button for 4 seconds.



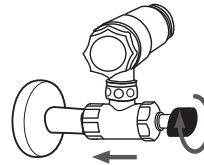
User Memory Mode

- Pressing  or  button for 4 seconds saves the currently set functions of water pressure, nozzle position, dry temperature, seat temperature, water temperature with long beep sound.
- Pressing  or  button shortly activates the saved functions with short beep sound

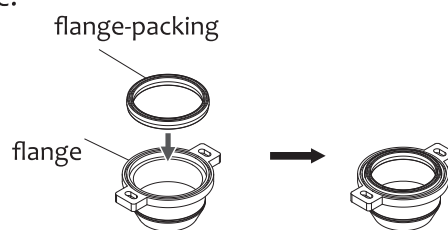
Installation

Installation of ceramic

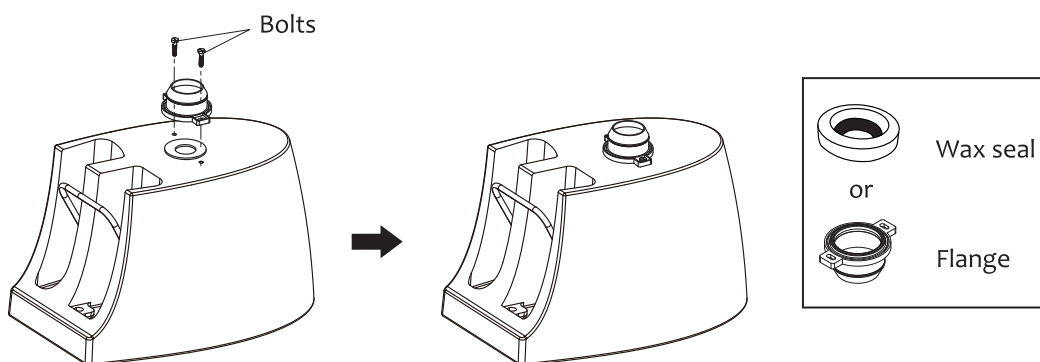
- 1 Connect the Angle-valve at the Shut-off valve.



- 2 Insert the flange-packing into the flange.

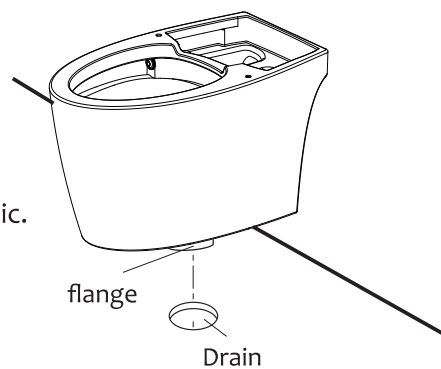


- 3 Turn the ceramic over. Place the flange at the bottom of ceramic and insert the bolts assemble the flange and ceramic with packing nuts.



- 4 Lift up the ceramic and fix the flange at a drain. Set the ceramic at level not to lean when fixing the flange.

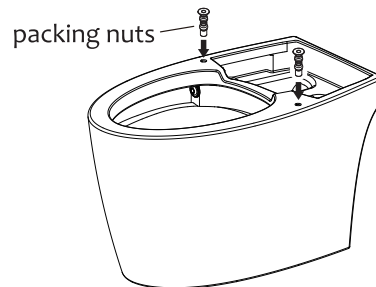
- Ceramic is heavy.
Recommend 2 workers when lifting up the ceramic.



Installation

Installation of Bidet

- 1 Insert the supplied packing nuts into the fixing holes on the ceramic.



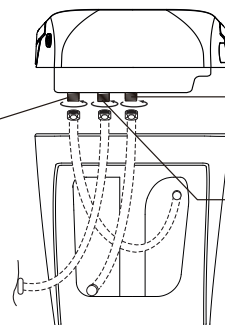
- 2 Connect the nozzle hoses(Upper, Lower each) to the water inlets.

- 3 Connect the bidet hose to the water inlet of the bidet.

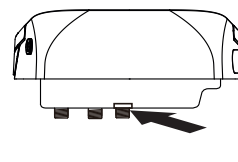
Water outlet for low ceramic nozzle (Jet nozzle)

Water outlet for upper ceramic nozzle (Rim nozzle)

Water inlet of the bidet

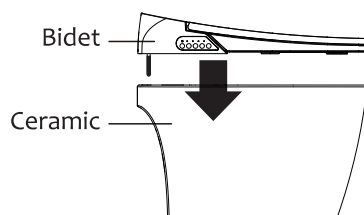


- 4 Insert a square-head bolt to the groove at the bottom of the bidet.



square-head bolt

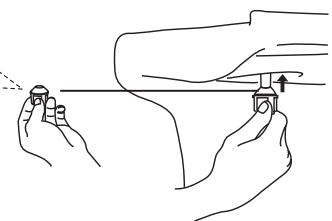
- 5 Insert the square-head bolt into an installation hole on the ceramic fix the bolt with rubber packing, washer and nut.



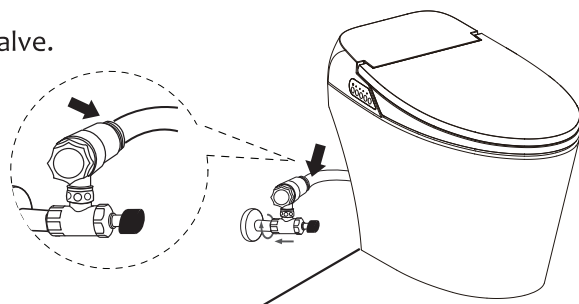
Bidet

Ceramic

Rubber packing
washer
Fixing nut



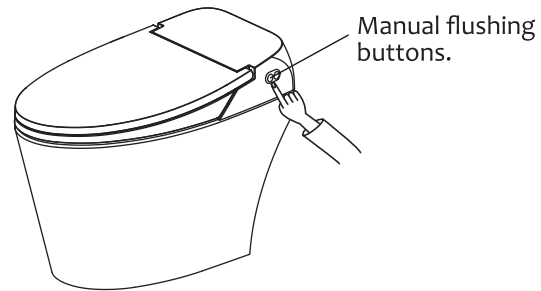
- 6 Connect the bidet hose to the Angle-valve.



Installation

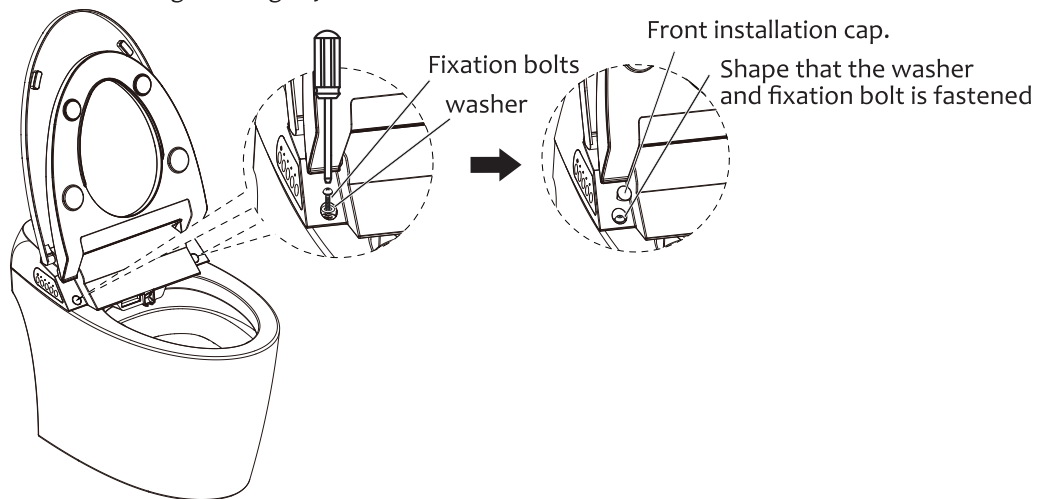
Installation of Bidet

- 7** Open the shut-off valve.
Check the flushing condition
by pushing manual flushing buttons.
(Upper, Lower both)



- 8** Fasten the washer and fixation bolts as shown at below illustration to fix the bidet at the ceramic. Cover the front installation caps.

- Fasten the mounting bolts tightly with screw driver



- 9** Check any water leakage from the bidet and ceramic with Trial Operation at 14th page.
Apply Silicone sealant to the bottom of the ceramic.

- Recommend to use the product 24 hours later to have the Silicone sealant wholly dried.

