



SETUP PHOTOS EXHIBIT

Report Number. : R13338409-EP1

Applicant : LEVITON MFG CO INC
20497 SW TETON
PO BOX 2210
TUALATIN, OR 97062-2210

Model : BLE-B8224

FCC ID : 2ASLN-ODS15

IC : 25037-ODS15

EUT Description : BLE Logic Board

Test Standard(s) : FCC 47 CFR PART 15 SUBPART C (2021)
ISED RSS-247 ISSUE 2:2019
ISED RSS-GEN ISSUE 5 + A1:2019

Date Of Issue:
2021-02-09

Prepared by:
UL LLC
12 Laboratory Dr.
Research Triangle Park, NC 27709 U.S.A.
Tel: (919) 549-1400



REPORT REVISION HISTORY

Rev.	Issue Date	Revisions	Revised By
v1	2021-02-09	Initial Issue	Niklas Haydon

TABLE OF CONTENTS

REPORT REVISION HISTORY	2
TABLE OF CONTENTS	3
1. DESCRIPTION OF TEST SETUP	4
2. SETUP PHOTOS.....	6

1. DESCRIPTION OF TEST SETUP

SUPPORT EQUIPMENT

Use	Product Type	Manufacturer	Model	Comments
EUT	Wall Box Dimmer	Leviton	BLE-B8224	None
SIM	Lightbulb	GE	100W	Used as load
AE	Terminal Block	AB	1492-EAJ35	None
Note: EUT - Equipment Under Test, AE - Auxiliary/Associated Equipment, or SIM - Simulator (Not Subjected to Test)				

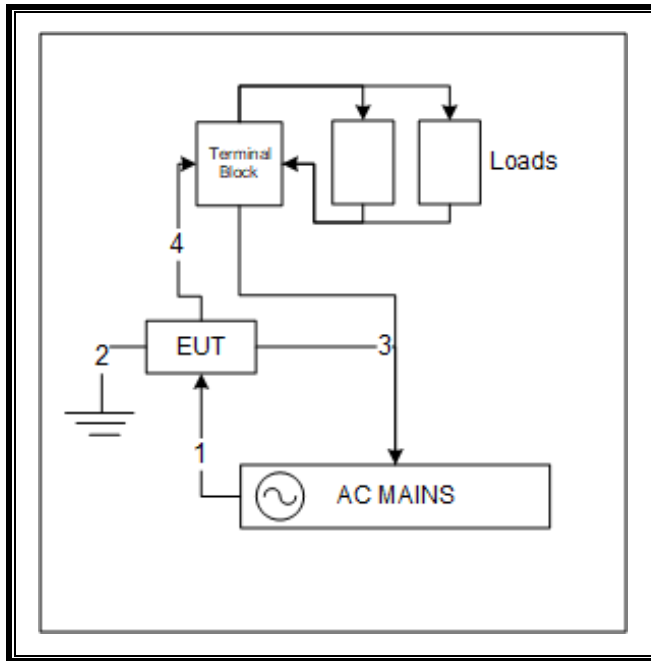
I/O CABLES

Port #	Name	Type*	Cable Max. >3m (Y/N)	Cable Shielded (Y/N)	Comments
0	Enclosure	N/E	—	—	None
1	Line	AC	N	N	None
2	Ground	AC	N	N	None
3	Neutral	AC	N	N	Connected to mains and loads
4	Load	AC	N	N	Connected to lightbulbs as loads
*Note: AC = AC Power Port DC = DC Power Port N/E = Non-Electrical I/O = Signal Input or Output Port (Not Involved in Process Control) TP = Telecommunication Ports					

TEST SETUP

The EUT is connected to a test laptop that contains software that exercises the radio card.

SETUP DIAGRAMS



2. SETUP PHOTOS

ANTENNA PORT CONDUCTED RF MEASUREMENT SETUP



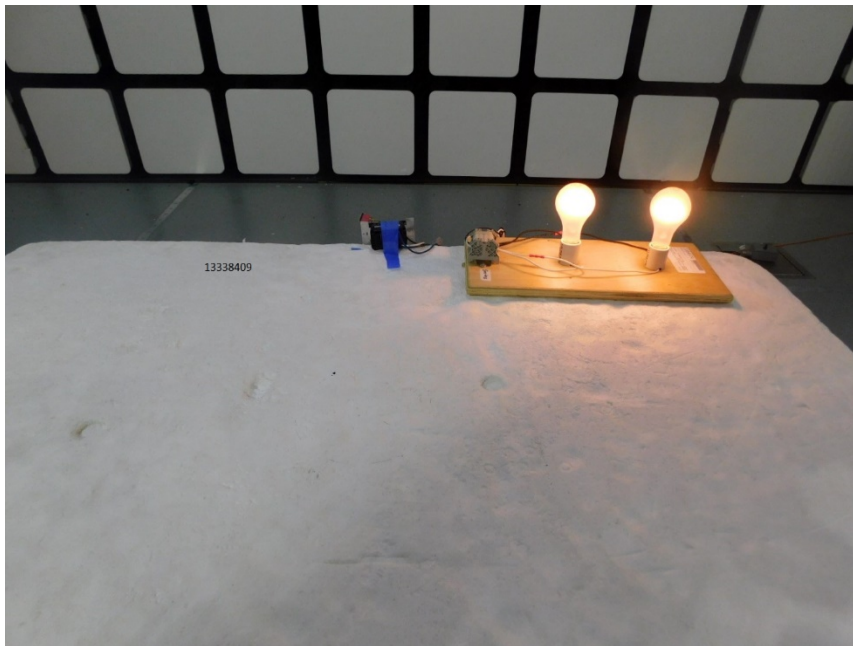
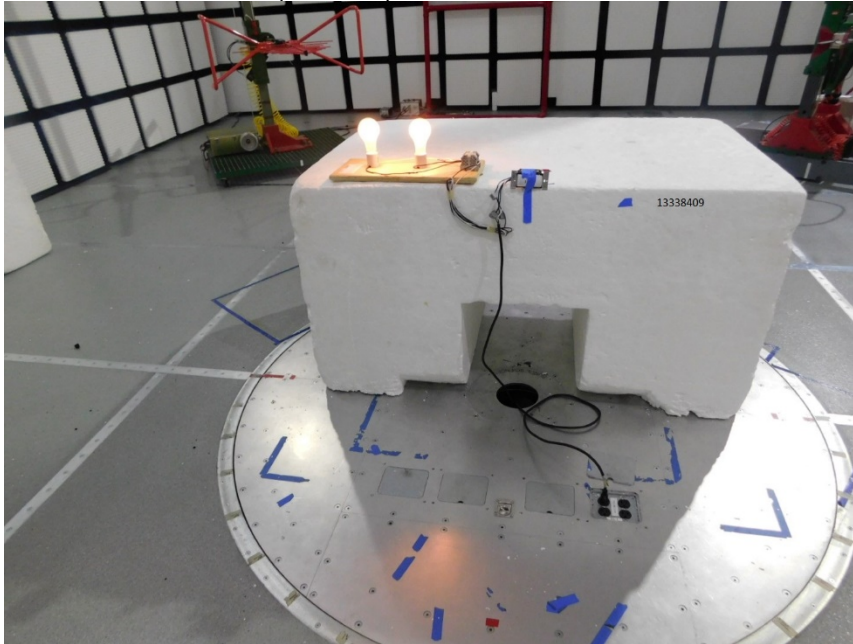
AC MAINS MEASUREMENT SETUP

AC MAINS

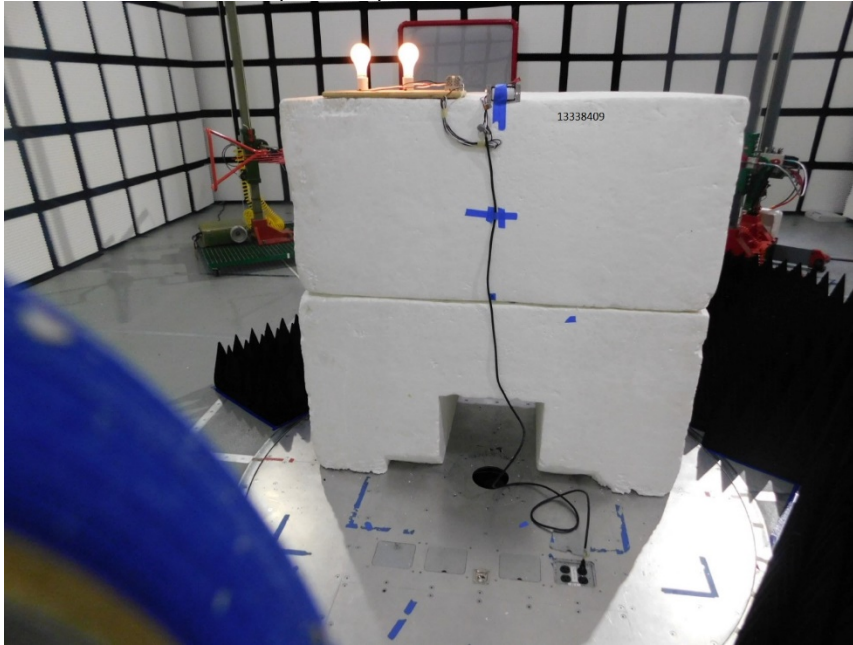


RADIATED RF MEASUREMENT SETUP

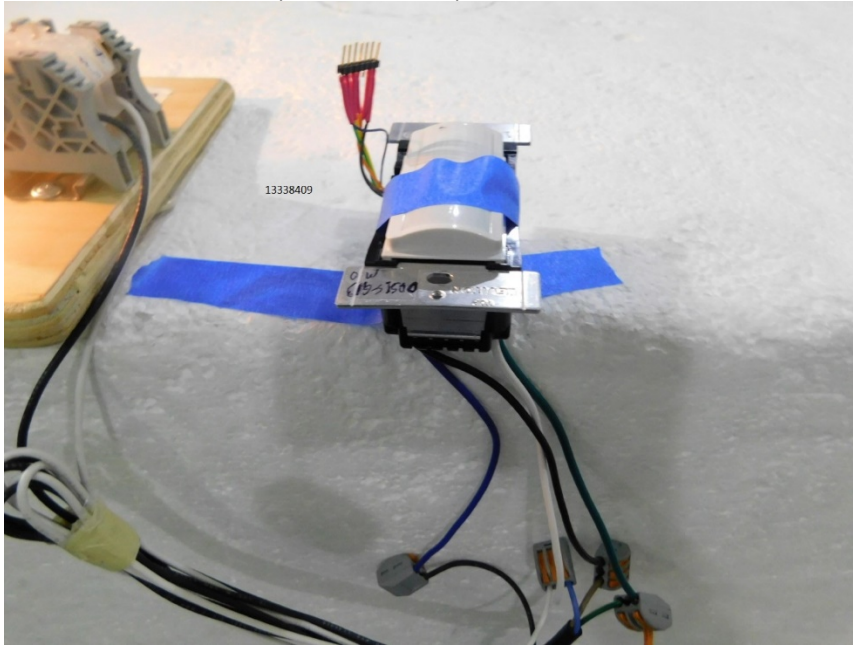
RADIATED PHOTO (< 1GHz)



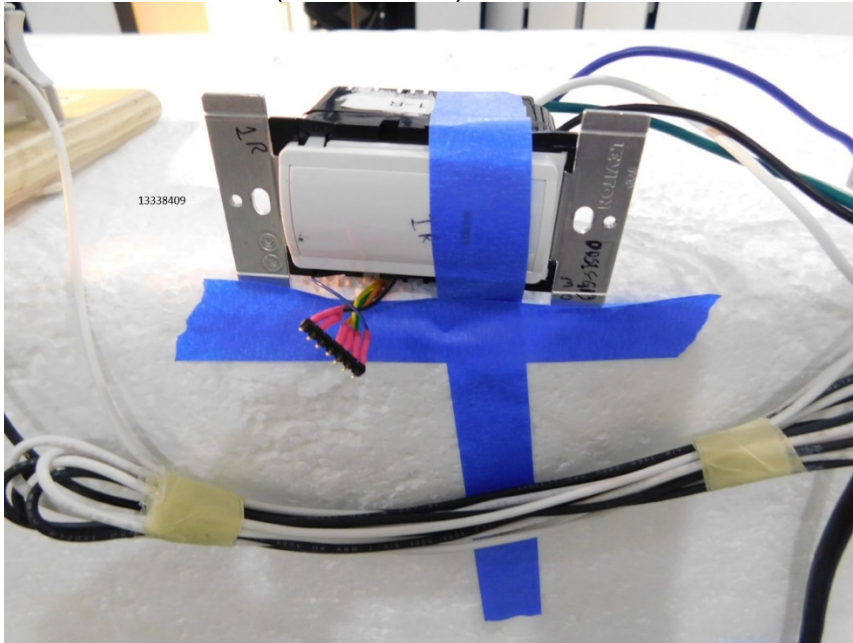
RADIATED PHOTO (>1GHz)

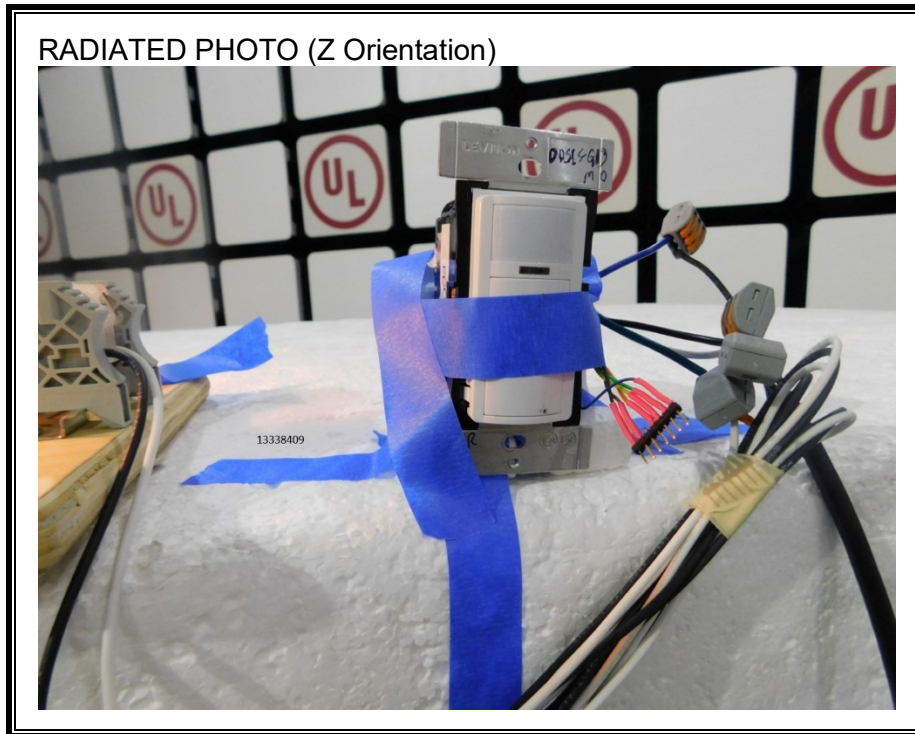


RADIATED PHOTO (X Orientation)



RADIATED PHOTO (Y Orientation)





END OF TEST REPORT