

STM32G  
031C8U6  
G0292159R  
CHN G0 934  
Z e3 Z

Model BLE-B8200  
FCC ID: 2A5LH-B820  
IC: 25037-IDZ01  
02/24/20

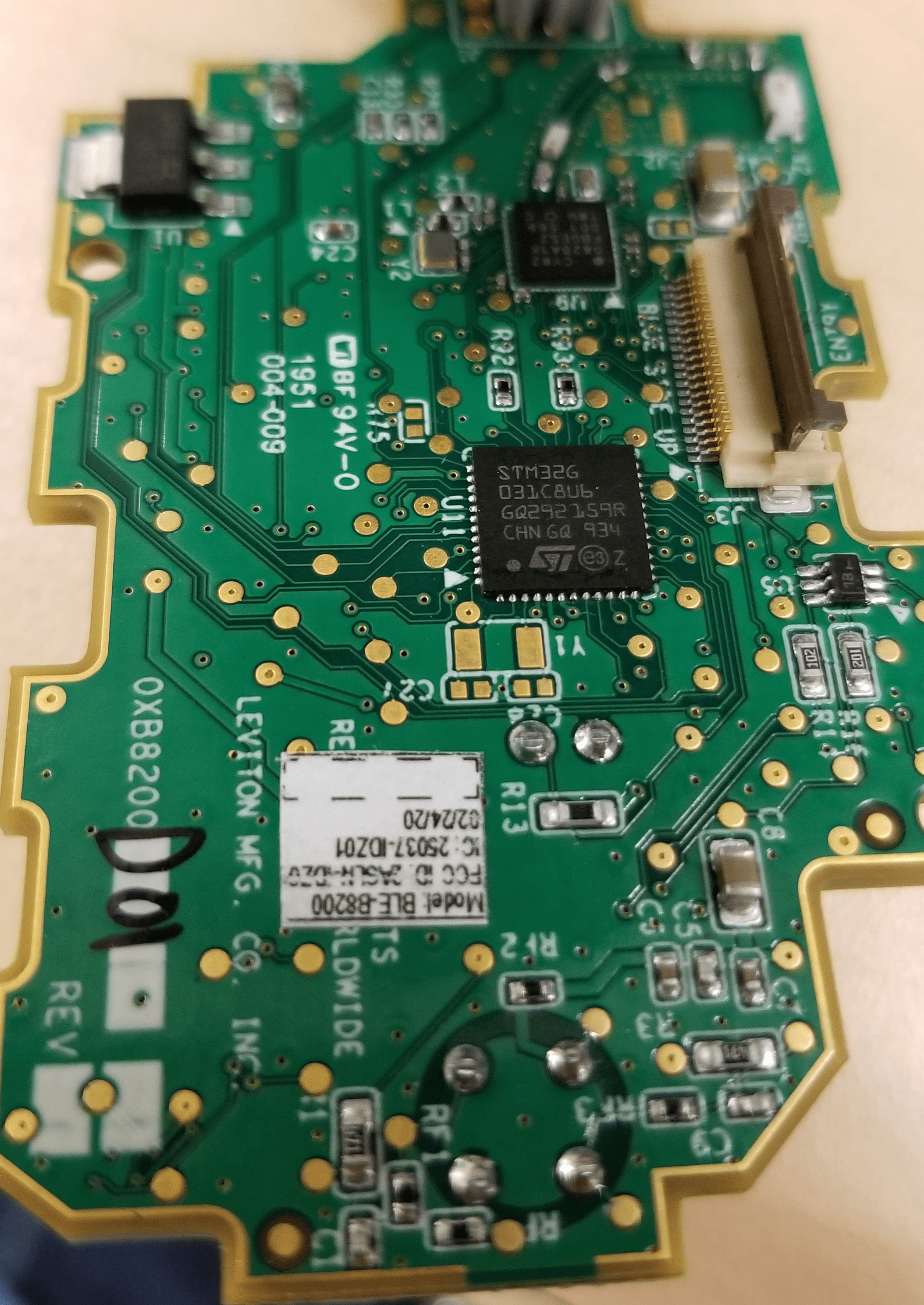
LEVITON MFG. CO. INC.

0XB8200

001

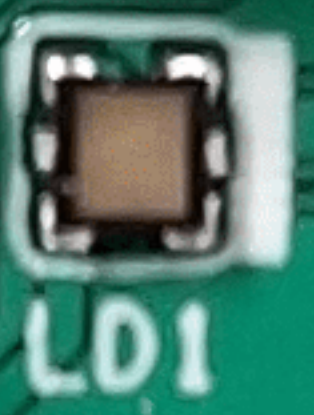
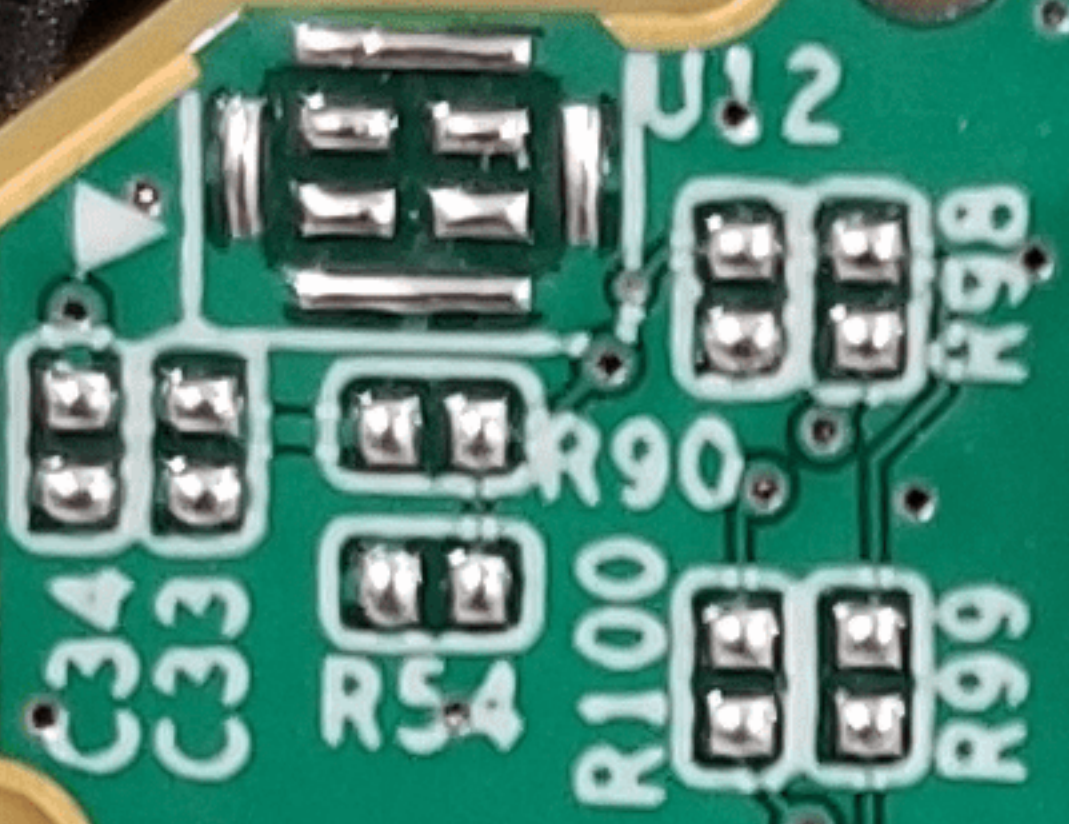
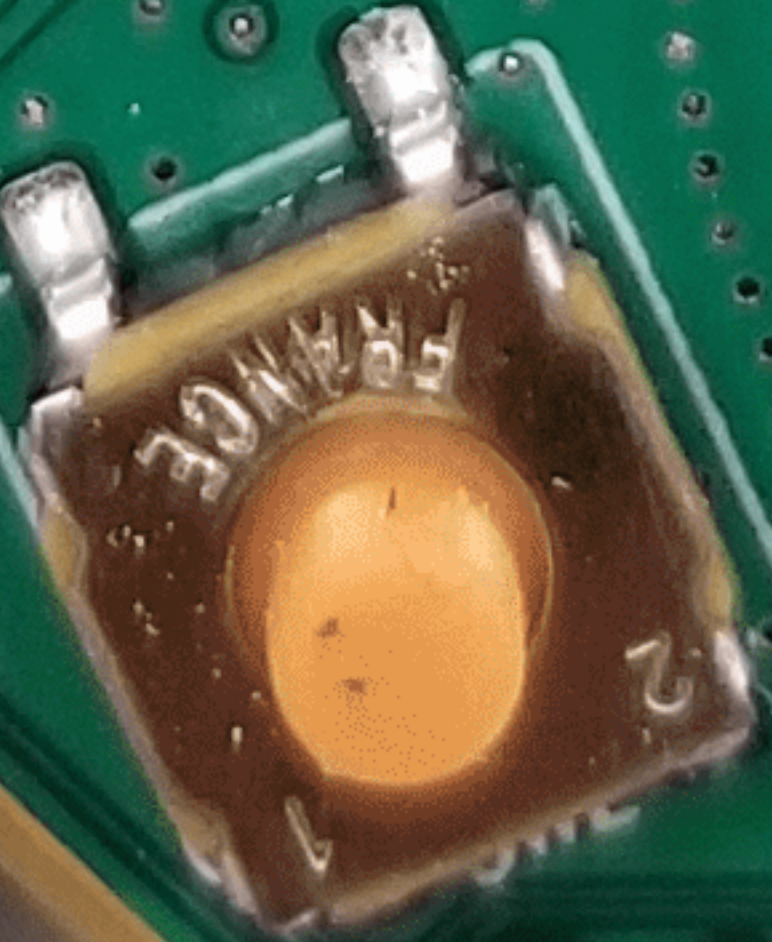
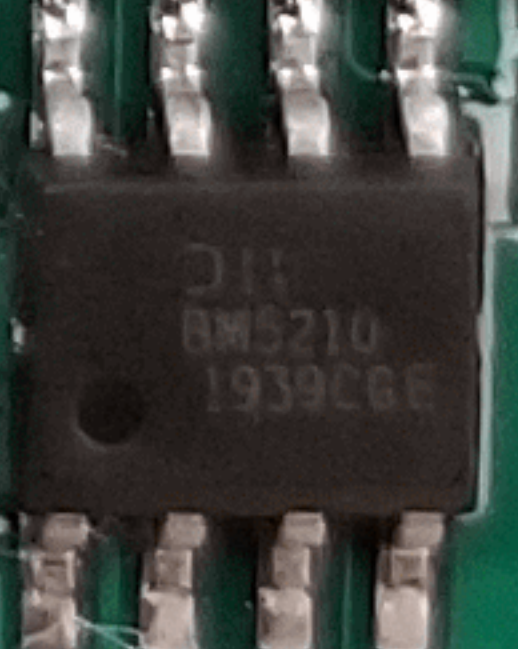
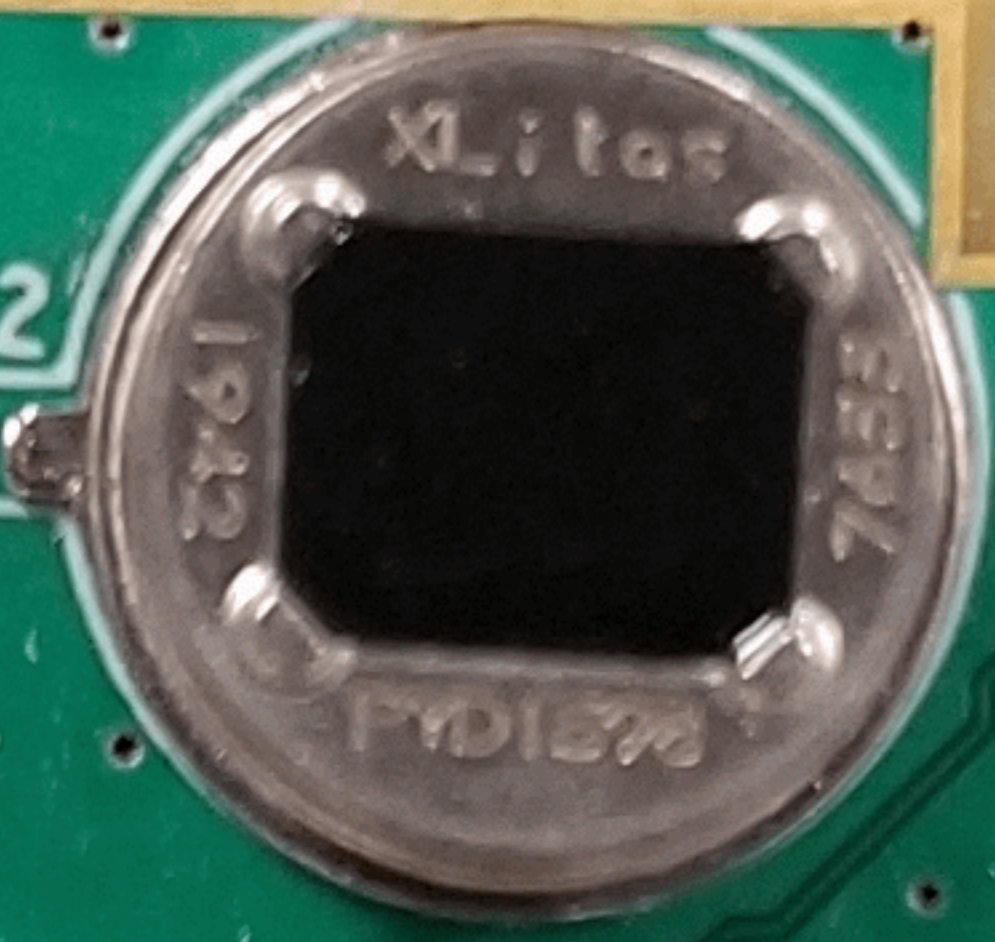
REV

08F94V-0  
1951  
004-009





0XB8200 REV. B  
LOGIC DP



C30

LD1

01

LD7

P25

R18

R72

R77

R76

R74

R26

C48

U20

R89

R77

R76

R17

R19

R15

LD6

C47

R22

ades101810

25SF041

R39

R37

C55

C18

U15

C60

LD2

C3

LD3

R20

R21

R22

3V3

.5V

GND

R4

R79

ED2

R40

R39

R37

R40

C55

C18

U15

C60

C69

C60

C60

C60

C60

C60

C60

C60

C60

C60

C60

C60

SW3

PS/2  
JET  
50K