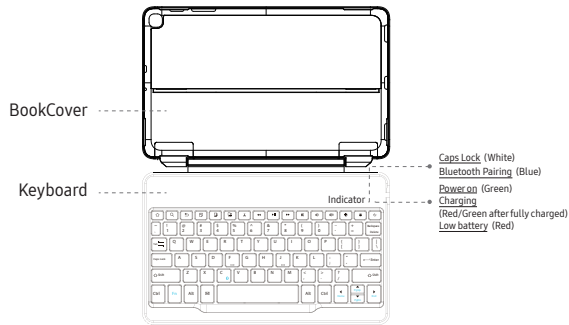




BLUETOOTH KEYBOARD BOOKCOVER Galaxy Tab A (2019,10.1")



Connecting steps

1. Press "Power" key for 1s, the power indicator turns on 3s, then turns off.
2. Press "Fn" and "C" keys at the same time, keyboard enters pairing mode, bluetooth pairing indicator flashes blue.
3. Turn on your tablet's bluetooth function, click the pairing name "ITFIT Bluetooth Keyboard" on your tablet screen.
4. Keyboard and tablet connect successfully, bluetooth pairing indicator turns off.

In Pairing Mode, if keyboard doesn't connect with device within 3 minutes, it stops pairing. You need to press "Fn" and "C" keys again to active Pairing Mode.

Low Battery Mode

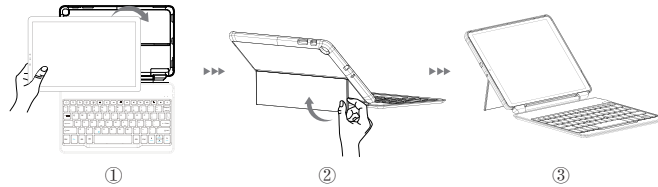
- The power indicator will flash once per 2s when low power occurs.

Energy-saving Mode

When there is not any operations in 30 minutes, keyboard will enter into energy-saving mode.

- Pressing any key and wait for 3s, keyboard will be back to work mode.

General usage steps



Other views to fold



Charging

1. Connect keyboard USB B port to keyboard charge port.
2. Connect USB A port to power adapter or PC USB port.
3. The power indicator will turn red while charging, it will turn to green after fully charged.

Accessories

1. A BLUETOOTH KEYBOARD BOOKCOVER
2. A User's manual
3. A USB cable

This device complies with part 15 of the FCC Rules. Operation is subject to the following two conditions:

- This device may not cause harmful interference.
- This device must accept any interference received, including interference that may cause undesired operation.

The device has been evaluated to meet general RF exposure requirement. The device can be used in portable condition without restriction.

Specification of Keyboard

Model No.	GP-JCT515SAABW
Bluetooth working distance	10 meters
Working voltage	3.0-3.7V
Working current	≤ 2.5mA
Charging current	≤ 200mA
Sleeping current	< 0.05mA
Re-connect time	3 seconds
Reworking time	2 seconds
Charging time	2 hours
Lithium battery capacity	250mAh
Working time	100 hours
Standby time	80 days
Working temperature	-10°C~+55°C

ⓘ Notice

This equipment has been tested and found to comply with the limits for a Class B digital device, pursuant to part 15 of the FCC Rules. These limits are designed to provide reasonable protection against harmful interference in a residential installation. This equipment generates, uses and can radiate radio frequency energy and, if not installed and used in accordance with the instructions, may cause harmful interference to radio communications. However, there is no guarantee that interference will not occur in a particular installation. If this equipment does cause harmful interference to radio or television reception, which can be determined by turning the equipment off and on, the user is encouraged to try to correct the interference by one or more of the following measures:

- Reorient or relocate the receiving antenna.
- Increase the separation between the equipment and receiver.
- Connect the equipment into an outlet on a circuit different from that to which the receiver is connected.
- Consult the dealer or an experienced radio/TV technician for help.

Any changes or modifications to this device not explicitly approved by manufacturer could void your authority to operate this equipment.

Made in China
 Manufacturer: HenSimLab Co., LTD
 ADD: No 2, RD HengKengZai, Xiangdong Village, Dalinshan Town, Dongguan China

FCC ID: 2ASLB-TYPE-A

RoHS

REACH
SVHC

CP65



Copyright © 2019 ITFIT All rights reserved