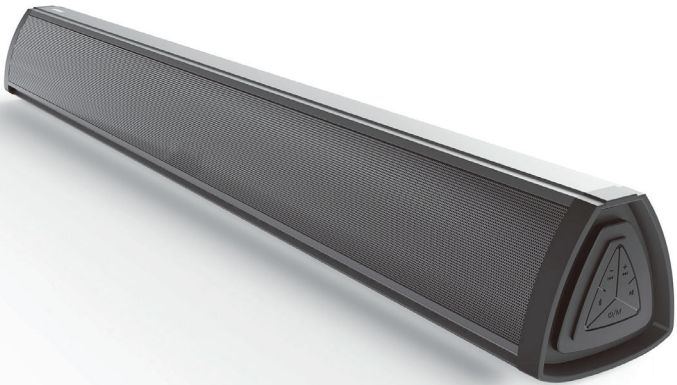


Game Sound bar

User Guide



MODEL NO.:HD-025MINI

Contents

Page Contents	Page	Page Contents	Page
Warnings	2	USB Media mode	5
Box contents	2	Equaliser settings	5
Introduction	3	Controlling the LED strip	5
Controls and connections	3	Troubleshooting	6
Operation	3	Specifications	6
Power On/Off	4		
AUX IN Mode	4		
Bluetooth mode	4		

Warnings and Advice

1. Do not place the soundbar close to naked flames, such as lighted candles.
2. Keep away from dripping or splashed fluids.
3. The unit should not be exposed to direct sunlight, very high or low temperatures, moisture, strong magnetic fields, high frequencies and dusty environments.
4. Do not use abrasives, benzene, thinner or other solvents to clean the surface of the unit. To clean, wipe with a clean soft cloth and a mild detergent solution.
5. Never attempt to insert wires, pins or other such objects into the vents or openings of the unit.
6. Do not disassemble or modify the soundbar, there are no user serviceable parts.
7. If the soundbar is damaged or malfunctions do not use. Consult a qualified service engineer.

Disposal of your old appliance:

All electrical and electronic products should be disposed of separately from household waste at an appropriate recycling point/centre.
For more detailed information about disposal of your old appliance, please contact your local authority.

Box Contents

- 1x Bluetooth Gaming Soundbar
- 1x Remote Control
- 1x AC/DC Power Adaptor
- 1x 3.5mm to 3.5mm AUX IN Cable
- 1x User Guide

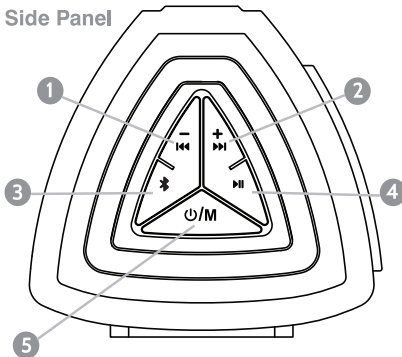
Introduction

Your HD-025MINI compact Bluetooth Gaming Soundbar combines a sleek design with an excellent audio response. The two built-in 10W drivers and air tube provide clarity across a broad frequency range, with crisp treble and deep bass. Input options include Bluetooth, AUX IN and MP3/WAV files on flash media via USB port. A cost-effective TV audio upgrade that doesn't compromise on performance.

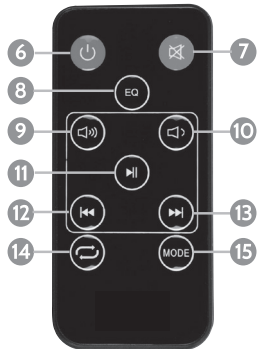
- Slender and stylish gloss black design
- Built-in 2.0 channel amplifier with 3 EQ presets
- Versatile input options to support a range of devices
- USB port for MP3 media playback
- Remote control and AUX IN cable included

Controls and connections

Side Panel



Remote Control



Back panel connections



- | | | |
|---|---|--|
| 1. - Long press Vol-, Short press previous track | 5. Long press on/off Short press change AUX/Bluetooth mode | 11. Short press Play/ Pause, Long press change RGB mode |
| 2. + Long press Vol+, Short press next track | 6. Power On/Off | 12. Previous track |
| 3. Short press Bluetooth disconnect, Long press RGB light strip On/Off | 7. Volume mute | 13. Next track |
| 4. Short press Play/ Pause, Long press change RGB mode | 8. EQ Equaliser modes 1/2/3, Long press RGB light strip On/Off | 14. USB Repeat mode |
| | 9. Volume + | 15. MODE: AUX/Bluetooth |
| | 10. Volume - | 16. USB Port |
| | | 17. AUX IN Port |
| | | 18. DC 19V Power socket |

Operation

Power on/off

1. Short press the Power \mathbb{O} (6) On/Off button on the remote control or long press \mathbb{O}/M (5) on the soundbar to turn the unit on/off.

LED Indicators

The LED indicator display area is behind the mesh in the centre front of your soundbar and indicates as follows:

- Red LED: Standby mode
- **bt**: Bluetooth mode
- **ALL**: USB repeat all tracks
- **AUX**: Auxiliary input mode
- **USB**: USB media mode
- **ONE**: USB repeat the same track

The LED display will also indicate track numbers and then current track time during USB drive playback.

LED light strip indications: **01**: Blue LED (default), **02**: Green LED, **03**: Red LED, **04**: White LED, **05**: RGB LED flashes randomly.

AUX IN Mode

1. Connect a compatible audio device using the 3.5mm - 3.5mm stereo jack cable supplied connected to the AUX IN port (17) on the back of the soundbar.
2. Press the **MODE** button on the remote control (15) or short press the \mathbb{O}/M (5) on the soundbar control panel repeatedly until **AUX** is displayed on the LED display and you will hear a spoken "AUX mode" message.
3. Ensure the connected device is producing an audio signal, then adjust the volume using the \mathbb{L} and \mathbb{R} buttons on the remote control (9 & 10) or + / - (2 & 1) on the soundbar control panel. Use the controls on the AUX IN device for all other functions.

Bluetooth Mode

1. Press the MODE button on the remote control (15) or soundbar control panel (5) repeatedly until **bt** is shown on the LED display. The LED display will flash to indicate that the soundbar is in Bluetooth pairing mode and you will hear a spoken "Bluetooth mode" message.
2. Enter your device's Bluetooth menu and select "HD-025MINI" in the device list. When your AF-20 and device are paired, the LED display on the soundbar will stop flashing and remain constant.
(The soundbar will now automatically reconnect with this device whenever it is within range and has Bluetooth turned on.) Once paired, the remote control or soundbar control panel can be used to play, pause (\mathbb{II}) and navigate between tracks ($\mathbb{II} \mathbb{L}$ / $\mathbb{R} \mathbb{II}$) on compatible iOS and Android devices.

USB Media Mode

The soundbar is compatible with USB flash drives up to 64GB in size (FAT32 format) and can playback MP3 and WAV audio files. Simply insert a compatible drive into the USB port on the back of the soundbar and the unit will automatically switch to USB mode and you will hear a spoken "Play by USB Drive" message) play the first compatible track. **USB** will also appear in the LED display area. The media controls on the remote control and on the soundbar control panel can be used to play, pause (▶||) and navigate between tracks on the flash drive (▶▶/◀◀), and the LED display will indicate track numbers and then current track time during playback.

USB repeat mode: This is accessed via the remote control button ↻ (14) press repeatedly to select single track repeat, LED displays **ONE** or all tracks repeat LED displays **ALL**.

The media player also has a memory function, when a previously played USB flash drive is reinserted it will recall and continue playing from the same point in the last played audio file. Ideal for interrupted podcasts or audiobooks.

Equalizer Settings

The soundbar has 3 equalizer presets, tailored to compliment different types of audio output styles of music. Press the **EQ** button on the remote to choose between: Music (EQ1), Movie/Gaming (EQ2), Voice (EQ3).

Controlling the RGB LED Light Strip

The default setting for the RGB LED light strip which runs along the bottom of the soundbar is a constant Blue, other options are available.

Long press the Play/Pause button on the main unit or remote control repeatedly to change the LED light strip's colour option. A corresponding number will appear in the indicator display area. **01**: Blue LED (default), **02**: Green LED, **03**: Red LED, **04**: White LED, **05**: LED flashes a random RGB colour every 1-2 seconds.

To turn the LED light strip Off/On long press the ✦ button (3) on the soundbar control panel or long press the **EQ** button (8) on the remote control.

Troubleshooting

If you are experiencing problems with your gaming soundbar there are some quick and easy checks that you can make to help you solve the problem.

Problem		Solutions	
There is no power or Red LED is showing	Check that the correct power adaptor is being used	Check that the power adaptor is properly connected	Check that the mains socket is switched on
There is no sound being emitted	Adjust the volume on your Bluetooth or AUX device as well as on the speaker for optimum volume and sound quality	Make sure that your Bluetooth device is in effective range	Ensure that the Bluetooth device is paired or AUX device is properly connected
Files on the USB drive won't play	The audio files are not compatible: must be MP3 or WAV format	The USB flash drive is not compatible, must be max 64GB, FAT32 format	

Specifications	
Power supply Ooutput	19V \approx 1.5A
Power adaptor input	100-240V \sim 50/60Hz, 1A Max
Audio output	20W RMS
Speaker drivers	2x 2"/10W driver units + air tube
Frequency	50Hz \sim 16kHz
SNR	$> = 80$ dB
Bluetooth version	5.0
Bluetooth range	\leq 10m
Connections	Bluetooth, USB 2.0, AUX (3.5mm)
Dimensions:	600 x 75 x 70mm (L x H x D)

FCC Warning:

This equipment has been tested and found to comply with the limits for a Class B digital device, pursuant to part 15 of the FCC Rules. These limits are designed to provide reasonable protection against harmful interference in a residential installation. This equipment generates, uses and can radiate radio frequency energy and, if not installed and used in accordance with the instructions, may cause harmful interference to radio communications. However, there is no guarantee that interference will not occur in a particular installation. If this equipment does cause harmful interference to radio or television reception, which can be determined by turning the equipment off and on, the user is encouraged to try to correct the interference by one or more of the following measures:

- Reorient or relocate the receiving antenna.
- Increase the separation between the equipment and receiver.
- Connect the equipment into an outlet on a circuit different from that to which the receiver is connected.
- Consult the dealer or an experienced radio/TV technician for help.

Caution: Any changes or modifications to this device not explicitly approved by manufacturer could void your authority to operate this equipment.

This device complies with part 15 of the FCC Rules. Operation is subject to the following two conditions: (1) This device may not cause harmful interference, and (2) this device must accept any interference received, including interference that may cause undesired operation.

The device has been evaluated to meet general RF exposure requirement. The device can be used in portable exposure condition without restriction.
