

FRONT

FOLD



Hi-Fi Bluetooth® Stereo with CD Player & FM Radio

Model: BWD19AAA07


PRODUCT GUIDE

Ver.00 01/24/19

Warnings and Precautions

- CAUTION:** TO PREVENT ELECTRIC SHOCK, MATCH WIDE BLADE OF PLUG TO WIDE SLOT, FULLY INSERT.
 - WARNING:** To reduce the risk of fire or electric shock, do not expose this apparatus to rain or moisture.
 - CAUTION:** Use of any controls or adjustments or performance of procedures other than those herein specified may result in hazardous radiation exposure.
 - WARNING:** Changes or modifications to this unit not expressly approved by the party responsible for compliance could void the users authority to operate the equipment.
 - WARNING:** Do not place the unit on top of any soft, porous, or sensitive surfaces to avoid damaging the surface. Use a protective barrier between the unit and surface to protect the surface.
 - WARNING:** Use of this unit near fluorescent lighting may cause interference regarding use of the remote. If the unit is displaying erratic behavior move away from any fluorescent lighting, as it may be the cause.
 - CAUTION:** Danger of explosion if battery is incorrectly replaced. Replace only with the same or equivalent type
 - WARNING:** The remote controls button cell battery contains mercury. Do not put in the trash, instead recycle or dispose of as hazardous waste.
 - WARNING:** Lithium batteries, like all rechargeable batteries are recyclable and should be recycled or disposed of in normal household waste. Contact your local government for disposal or recycling practices in your area. They should never be incinerated since they might explode.
 - WARNING:** Shock hazard - Do Not Open. Adapter is used as disconnect device and it should remain readily operable during intended use. In order to disconnect the apparatus from the mains completely, the adapter should be disconnected from the mains socket outlet completely.
- CAUTION** RISK OF ELECTRIC SHOCK DO NOT OPEN
- ATTENTION** RISK OF ELECTROSHOCK READ MANUAL
- WARNING:** TO REDUCE THE RISK OF ELECTRIC SHOCK, DO NOT REMOVE COVER (OR BACK). NO USER-SERVICEABLE PARTS INSIDE. REFER SERVICING TO QUALIFIED SERVICE PERSONNEL.
- The lightning flash with arrowhead symbol, within an equilateral triangle, is intended to alert the user to the presence of uninsulated "dangerous voltage" within the product's enclosure that may be of sufficient magnitude to constitute a risk of electric shock to persons.
- The exclamation point within an equilateral triangle is intended to alert the user to the presence of important operating and maintenance (servicing) instructions in the literature accompanying the appliance.
- This product utilizes a Class 1 laser to read Compact Discs. This Laser Compact Disc Player is equipped with safety switches to avoid exposure when the CD door is open and the safety interlocks are defeated. Invisible laser radiation is present when the CD Players lid is open and the systems interlock has failed or been defeated. It is very important that you avoid direct exposure to the laser beam at all times. Please do not attempt to defeat or bypass the safety switches.

Important Safety Instructions

- Read these Instructions.
- Keep these Instructions.
- Heed all Warnings.
- Follow all instructions.
- Do not use this apparatus near water.
- Clean only with a dry cloth.
- Do not block any ventilation openings. Install in accordance with the manufacturer's instructions.
- Do not install near any heat sources such as radiators, heat registers, stoves, or other apparatus (including amplifier).
- Do not defeat the safety purpose of the polarized or grounding-type plug. A polarized plug has two blades with one wider than the other. A grounding type plug has two blades and a third grounding prong. The wide blade or the third prong are provided for your safety. When the provided plug does not fit into your outlet, consult an electrician for replacement of the obsolete outlet.
- Protect the power cord from being walked on or pinched particularly at plugs, convenience receptacles, and the point where they exit from the apparatus.
- Only use attachments/accessories specified by the manufacturer.
-  Use only with a cart, stand, tripod, bracket, or table specified by the manufacturer, or sold with the apparatus. When a cart is used, use caution when moving the cart/apparatus combination to avoid injury from tip-over.
- Unplug this apparatus during lightning storms or when unused for long periods of time.
- Refer all servicing to qualified service personnel. Servicing is required when the apparatus has been damaged in any way, such as power-supply cord or plug is damaged, liquid has been spilled or objects have fallen into the apparatus, the apparatus has been exposed to rain or moisture, does not operate normally, or has been dropped.
- Power Sources - This product should be connected to a power supply only of the type described in these operating instructions, or as marked on the unit.
- Water and Moisture - This product should be kept away from direct contact with liquids. The apparatus shall not be exposed to dripping or splashing and that no objects filled with liquids, such as vases, shall be placed on the apparatus.
- CAUTION** - Danger of explosion if battery is incorrectly replaced. Replace only with the same or equivalent type. Batteries (a battery pack or an installed battery) shall not be exposed to excessive heat such as sunshine, fire, etc.
- Where the mains plug or an appliance coupler is used as the disconnect device, the disconnect device shall remain readily operable.
- Do not install this equipment in a confined or "boxed-in" space such as a bookcase or similar unit, and maintain good ventilation conditions. The ventilation should not be impeded by covering the ventilation openings with items such as newspaper, tablecloths, curtains, etc.
- This apparatus is for professional use only.
- When moving or not using the appliance, secure the power cord (e.g., wrap it with a cable tie). Be careful not to damage the power cord. Before using it again, make sure the power cord has not been damaged. If the power cord has been damaged at all, bring the unit and cord to a qualified service technician for repair or replacement as specified by the manufacturer.
- WARNING:** Please refer to any important information (e.g., electrical, safety, etc.) printed on the exterior bottom enclosure or rear panel before installing or operating the product.
- WARNING:** Do not ingest the battery, Chemical Burn Hazard (The remote control supplied with this product contains a coin/button cell battery. If the coin/button cell battery is swallowed, it can cause severe internal burns in just 2 hours and can lead to death. Keep new and used batteries away from children. If the battery compartment does not close securely, stop using the product and keep it away from children. If you think batteries might have been swallowed or placed inside any part of the body, seek immediate medical attention.

FCC Warnings

NOTE: This equipment has been tested and found to comply with the limits for a Class B digital device, pursuant to Part 15 of the FCC Rules. These limits are designed to provide reasonable protection against harmful interference in a residential installation. This equipment generates, uses, and can radiate radio frequency energy and, if not installed and used in accordance with the instructions, may cause harmful interference to radio communications. However, there is no guarantee that interference will not occur in a particular installation. If this equipment does cause harmful interference to radio or television reception, which can be determined by turning the equipment off and on, the user is encouraged to try to correct the interference by one or more of the following measures:

- Reorient or relocate the receiving antenna.
- Increase the separation between the equipment and receiver.
- Connect the equipment into an outlet on a circuit different from that to which the receiver is connected.
- Consult the dealer or an experienced radio/TV technician for help.

Additional Warnings

- Do not expose the apparatus to dripping or splashing. Do not place objects filled with liquids (e.g., vases) on top of the apparatus.
 - Plug is used as disconnect device and it should remain readily operable during intended use. In order to disconnect the apparatus from the mains completely, the adapter should be disconnected from the mains socket outlet completely.
 - Battery shall not be exposed to excessive heat such as sunshine, fire or the like.
 - Caution marking is located at the back of apparatus.
- FCC RF Radiation Exposure Statement
This equipment complies with FCC RF radiation exposure limits set forth for an uncontrolled environment. This equipment should be installed and operated with a minimum distance of 20 centimeters between the radiator and your body.

SYSTEM CONNECTIONS

SPEAKER CONNECTIONS

Connect the speakers to the R terminal and the L terminal.

NOTE: Connecting speakers other than the speakers supplied with the unit may damage the unit.

CAUTIONS:

- Ensure that the power supply in your house complies with that indicated on the identification sticker located on the back of your unit. (AC 120V ~ 60Hz).
- If you are not going to use the unit for a long time, disconnect the AC power plug from the wall outlet.
- This unit is designed for continuous use. Switching off the unit to standby mode does not disconnect it from the power supply. To completely isolate the equipment, remove the plug from the wall outlet as some components remain connected to the electrical supply.
- To prevent electrical shock, match wide blade of plug to wide slot of wall outlet, then fully insert.**

CHARGE YOUR SMARTPHONE/TABLET

You can charge your smartphone/tablet through the USB socket with a USB cable (not supplied). Connect a USB cable (not supplied) to the USB socket on the front of the unit and the dock connector on your smartphone/tablet.

LISTENING TO THE RADIO

Press the **SOURCE** button to switch to TUNER mode.

Searching for a Station Automatically

- Press and hold the **I◀◀** or **▶▶I** button until the tuner starts searching for a station, then release. After tuning in a station, the search stops.

Presetting Stations

- Tune in to a desired station. Press the **◂/PROG/MEM** button.
- The preset number will blink and the "MEM" indicator will be shown on the display.
- Press the **I◀◀** or **▶▶I** button to select the preset number.
- Press the **◂/PROG/MEM** button again to store it in memory.

Tuning in to a Preset Station

Press the **◂/MEM.UP** button to select a preset number.

Note: Fully unwind the wire antenna. Then extend the wire antenna and place it in the position that sounds best. When the reception is good, the **(R)** icon will appear on the display.

CLOCK SETTINGS

Setting the clock can only be done in STANDBY mode.

- If the unit is plugged in with the supplied AC adapter and the unit is in standby mode.
- Press and hold the **◂/PROG/MEM** button until the hour digits blink.
- Press the **I◀◀** or **▶▶I** button to adjust the desired hours and press the **◂/PROG/MEM** button once to confirm, then the minute digits blink.
- Press the **I◀◀** or **▶▶I** button to adjust the desired minutes and press the **◂/PROG/MEM** button once to start clock.

PLAYBACK VIA BLUETOOTH® ENABLED DEVICES

INITIAL DEVICE PAIRING AND CONNECTION

In order to pair and connect your Bluetooth® device for the first time:

- Press the **SOURCE** button to Bluetooth® mode and **(B)** icon is shown on the display. The **(B)** icon flashes which means the unit is in Bluetooth® mode and ready to pair.
- Turn on the Bluetooth® device you wish to pair and connect.
- Press and hold the **(B) PAIR** button on the remote control for 3 seconds. The **(B)** icon will start flashing rapidly which means it is pairing.
- On your Bluetooth® enabled device, search for the "Bluetooth" in the list of discovered devices and select it. It may take the unit and Bluetooth® enabled device a few seconds to pair.
- When the **(B)** icon lights up, the unit and the Bluetooth® enabled device are now paired and connected.
- You can now enjoy audio from the unit.

Notes: If your Bluetooth device (e.g. Smart phone etc.) needs the PIN code while pairing, please enter 4-digit number: 0000.
The unit can only be connected to one Bluetooth® device at a time.

RECONNECTING A BLUETOOTH® ENABLED DEVICE

Bluetooth® enabled devices must be reconnected when the device has been turned off or the unit has been turned off.

- Turn on the Bluetooth® device that has already been paired with the unit.
- Press the **SOURCE** button to Bluetooth® mode and **(B)** icon is shown on the display. The **(B)** icon flashes and starts flashing rapidly, and it auto searches for the last paired Bluetooth® device in memory.
- Depending on your Bluetooth® device, your device may automatically connect to the unit. If the device does not automatically connect to the unit, press and hold the **(B) PAIR** button on the remote control for 3 seconds until the **(B)** icon starts flashing rapidly, then search for the "Bluetooth" in its list of your Bluetooth® devices and select it.
- Once the **(B)** icon light up, the Bluetooth® enabled device is paired and connected.
- You can now enjoy audio from the unit.

PAIR AND CONNECT WITH ANOTHER NEW DEVICE

In order to pair the unit to a new device, you must first disconnect the currently paired and connected Bluetooth® device from the unit.

- On the currently paired and connected Bluetooth® device, select the "Bluetooth" from the list of currently paired and connected devices, and disconnect it. Please refer to your Bluetooth® enabled device User's Guide for direction on how to disconnect a device. Or turn off the Bluetooth® device.
- Follow the Initial device pairing and connection instructions above.

CD PLAYBACK

- Press the **▲ OPEN/CLOSE** button to open the CD door. Place a disc in the center with the label side up and then press the **▲ OPEN/CLOSE** button to close the CD door.
- Press the **SOURCE** button to CD mode. **(CD)** appears and **"-"** blinks on the display. Then the total track no. is shown on the display.
- Press the **▶ II PLAY/PAUSE** button to start playing.

FOLD

BACK

FOLD

REPEAT PLAYBACK

Repeat Current Track

Press the **CD/MEM.UP** button until "REPEAT" blinks on the display. The current track will be played repeatedly.

Repeat the Entire CD

Press the **CD/MEM.UP** button until "REPEAT" stops blinking and remains on. All tracks will be played repeatedly.

Cancel Playback Mode

Press the **CD/MEM.UP** button until "REPEAT" disappears.

PROGRAMMABLE CD PLAYBACK

A program of up to 20 tracks can be set to play in a preset order.

- In CD stop mode, press the **PROG/MEM** button and the "MEM" & "P Q I" will blink on the display.
- Press the **LEFT/RIGHT** button to select the desired track and press the **PROG/MEM** button to store the track in memory. To start playback, press the **PLAY/PAUSE** button.

PRESET EQ

This system has four different equalizer settings to adjust the levels of bass and treble.

During playback, press the **PRESET EQ** button to select a desired music mode. Each time the **PRESET EQ** button is pressed, the music mode will be changed to the next one as follows: **OFF** → **ROCK** → **CLASSIC**

TIMER SETTING

The timer function will turn the unit on at a preset time.

To Set Timer

- In standby mode, press and hold the **TIMER** button on the remote control until the display blinks.
- Press the **PROG/MEM** button until the hour digits blink.
- Tap the **LEFT/RIGHT** button to adjust the desired hours then tap the **PROG/MEM** button once to confirm. The minute digits will begin to blink.
- Tap the **LEFT/RIGHT** button to adjust the desired minutes then tap the **PROG/MEM** button once to confirm.
- Press the **SOURCE** button to select the timer mode (RADIO or CD), then tap the **PROG/MEM** button once to confirm. The "TUNER" or "CD" icon will be shown on the display.
 - For RADIO timer, tune in to a desired station.
 - For CD timer, insert a CD into the unit.
- Press the **VOL +/-** buttons to adjust the volume levels.
- Press the **PROG/MEM** button to confirm.
- The unit will wake up to "RADIO" or "CD" when the timer reaches the preset time.

To Cancel Timer

- Press and hold the **TIMER** button on the remote control until the "TUNER" or "CD" icon goes out.

SLEEP TIMER SETTING

The sleep timer automatically turns the unit off at a certain time.

- While the unit is on, press the **SLEEP** button on the remote control and "90" appears on the display.
- Press the **SLEEP** button repeatedly to select the desired sleep time as below:
 0FF → 90 → 80 → 70 → 60 → 50 → 40 → 30 → 20 → 10
- After setting a desired sleep time, the "SLEEP" appears on the display.
- The unit will automatically turn off once it reaches the sleep time.
 - To clear the preset sleep time press the **SLEEP** button on the remote control to select "0FF" and the "SLEEP" disappears on the display.

ILLUMINATED SPEAKERS

When the unit turns on, the speakers will light up with multi-color LEDs and interact with the music. Press and hold the **EQ** button on the unit or remote control repeatedly to select the desired mode as below:

L01 → L02 → L03 → L04 → OFF
 (Multi-color LEDs) (Red LED) (Green LED) (Blue LED)

LIMITED WARRANTY

VENTURER ELECTRONICS ("VENTURER") makes the following limited warranty. This limited warranty extend to the original consumer purchaser and is limited to non-commercial use of the product.

Ninety (90) Day Parts & Labor Warranty

Venturer products purchased in the United States are warranted to be free from defects in materials or workmanship for a period of ninety (90) days from the date of their original retail purchase. If the unit fails to conform to this warranty, we will service the product using new or refurbished parts and products, at VENTURER's sole discretion. During a period of ninety (90) days from the effective warranty date, VENTURER will provide, when needed, service labor to repair a manufacturing defect at its designated Service Center. To obtain warranty service in the United States, you must first contact our Customer Support Center at www.venturer.com. The determination of service will be made by VENTURER Customer Support. **PLEASE DO NOT RETURN YOUR UNIT TO VENTURER WITHOUT PRIOR AUTHORIZATION.** New or remanufactured replacements for defective parts or products will be used for repairs by VENTURER at its designated Service Center for ninety (90) days from the effective warranty date. Such replacement parts or products are warranted for an additional ninety (90) days from the date of repair or replacement. The Customer will be required to ship the unit to the Service Center indicated at the time Customer Support is contacted to make the necessary repairs. The customer is responsible for all transportation charges to the service facility.

Packaging and Shipping Instruction

When you send the product to the VENTURER service facility you must use the original carton box and packing material or an equivalent as designated by VENTURER.

Your Responsibility

- You must retain the original sale receipt to provide proof of purchase.
- These warranties are effective only if the product is purchased and operated in the U.S.A. or Canada.
- Warranties extend only to defects in material or workmanship, and do not extend to any product or parts which have been lost or discarded, or damage to product or parts caused by misuse, accident, improper operation or maintenance, or use in violation of instructions provided with the product, or to product which has been altered or modified without authorization of VENTURER, or to products or parts thereof which have had the serial number removed or changed.

Out of Warranty

In the event your product requires repair after the limited warranty period has expired, please contact our Customer Support Center at www.venturer.com
Important: You are responsible for any transportation, shipping or insurance relative to the return of product to our Product Returns Center.

All warranties implied by state law, including the implied warranties of merchantability and fitness for a particular purpose, are expressly limited to the duration of the limited warranties set forth above. With the exception of any warranties implied by state law as hereby limited, the foregoing warranty is exclusive and in lieu of all other warranties, guarantees, agreements and similar obligations of manufacturer or seller with respect to the repair or replacement of any parts. In no event shall VENTURER be liable for consequential or incidental damages.

No person, agent, distributor, dealer or company is authorized to change, modify or extend the terms of these warranties in any manner whatsoever. The time within action must be commenced to enforce any obligation of VENTURER arising under the warranty or under any statute, or law of the United States or any state thereof, is hereby limited to ninety (90) days from the date of purchase. This limitation does not apply to implied warranties arising under state law.

This warranty gives you specific legal rights and you may also have other rights, which may vary from state to state. Some states do not allow limitations on how long an implied warranty lasts, when an action may be brought, or the exclusion or limitation of incidental or consequential damages, so the above provisions may not apply to you.

For more information on other products and services, please visit our web site at: www.venturer.com

Important: Also keep your "Bill of Sale" as proof of purchase.

Model no Product name

Type of set Serial no

Invoice no Date purchased

Dealer name

FOR SERVICE AND REPAIR, PLEASE VISIT www.venturer.com



As concerns grow about the environmental impact of outdated electronic products, Venturer Electronics is committed to being a part of the solution. Free of charge, Venturer Electronics customers can return qualifying units to us for recycling. For more details, please visit our website at www.venturer.com/recycle.

USB DEVICE CHARGING

Your unit includes a USB charging port (DC 5V, 1A) for charging most devices, including iPhone, iPod, Android devices and other compatible USB devices.

LINE IN CONNECTION

You can connect audio devices such as your CD player or MP3 player to the unit via the LINE IN jack. To do this, connect an audio cable from the line out or headphone out jack of the other audio device to the LINE IN jack on the front of unit. Press the **SOURCE** button to switch to AUX mode.

Note: We recommend you unplug the device from the LINE IN jack when not in use.

TROUBLESHOOTING GUIDE

PROBLEMS

BLUETOOTH®

Bluetooth® devices doesn't pair with this unit.

SOLUTIONS

- Make sure your Bluetooth® device is working properly.
- Make sure the source is Bluetooth® mode.
- Check your device's manual for details on Bluetooth® pairing and linking.

CD

Disc in place but unit won't play

- Make sure the source is CD mode.
- Make sure **PLAY/PAUSE** button is pressed.
- Make sure disc label is facing up.
- Pause mode is activated.
- Disc may be damaged or dirty; check disc.

Disc skips

- Make sure the unit is on a secure spot. Vibration or jarring can cause the disc to skip.

RADIO

Poor FM reception

- Make sure FM antenna wire is fully extended.
- Electrical interference in your home can cause poor reception. Move the unit away from them (especially those with motors and transformers).
- Rotate the unit horizontally.

OTHERS

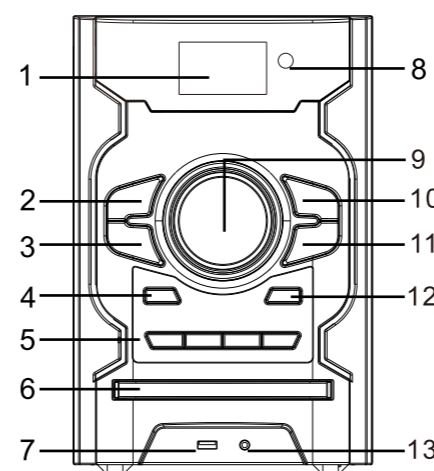
System doesn't turn on

- Make sure AC adapter is secure in the outlet, and outlet has power.

No sound

- Make sure the current mode is correct.
- Make sure you've turned on the connected device, and music are being played back.
- Check if volume is set to zero.

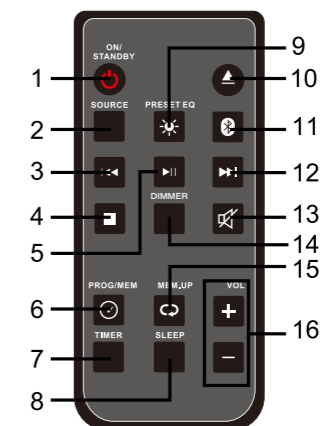
Specifications and external appearance are subject to change without notice.



- DISPLAY
- PLAY/PAIR button
- LEFT/TUNE - button
- STANDBY/ON button
- Pair/Clock button
- EQ button
- PRESET EQ button
- OPEN / CLOSE button
- CD Door
- USB port (for charging only)
- Remote sensor
- VOLUME control
- STOP button
- RIGHT/TUNE + button
- SOURCE button
- Line in / Aux jack

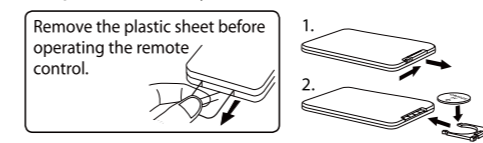
REMOTE CONTROL

- ON/STANDBY button
- SOURCE button
- LEFT/TUNE - button
- STOP button
- PLAY/PAUSE button
- PROG/MEM button
- TIMER button
- SLEEP button
- PRESET EQ button
- OPEN/CLOSE button
- PAIR button
- RIGHT/TUNE + button
- Mute button
- DIMMER
- MEM.UP button
- VOLUME +/- buttons



BATTERY REPLACEMENT

When the battery becomes weak, the operating distance of the remote control is greatly reduced and you will need to replace the battery.



Note: If the remote control is not going to be used for a long time, remove the battery to avoid damage caused by battery leakage corrosion.

Warning: Do not dispose of the battery in fire; battery may explode or leak. Batteries should not be exposed to excessive heat such as sunshine, fire or the like.

Caution: Danger of explosion if battery is incorrectly replaced. Replace only with the same or equivalent type.

WARNING

DO NOT INGEST BATTERY. CHEMICAL BURN HAZARD.
 The remote control supplied with this product contains a coin/button cell battery. If the coin/button cell battery is swallowed, it can cause severe internal burns in just 2 hours and can lead to death. Keep new and used batteries away from children. If the battery compartment does not close securely, stop using the product and keep it away from children. If you think batteries might have been swallowed or placed inside any part of the body, seek immediate medical attention.

FOLD

FOLD

FOLD

FOLD

FOLD