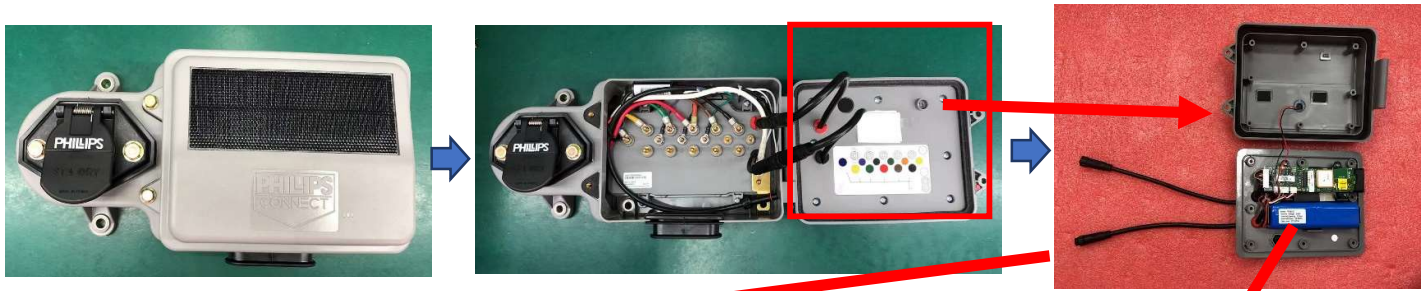


Model Difference Letter

We, Phillips Connect Technologies, LLC,
declare that the difference between 4 new models is as follows:

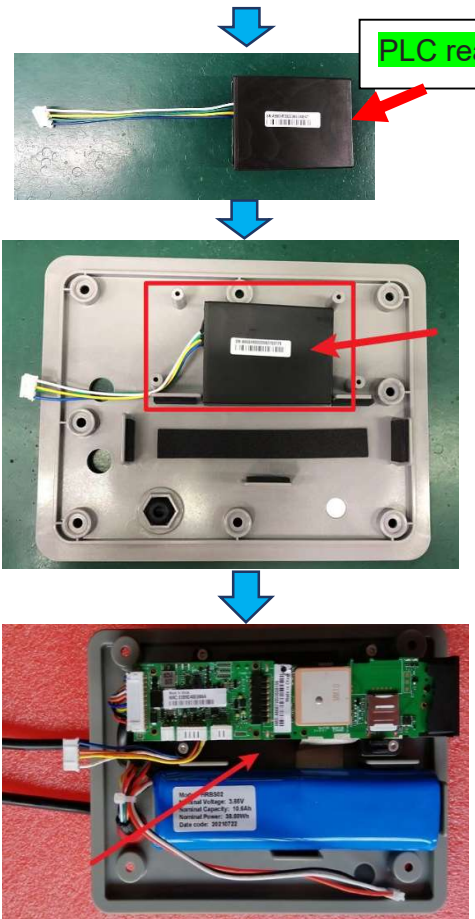
1. **77-6801-A A2SA is all the same with 77-6800 CAN except the model number.**
77-6800 CAN=77-6801-A A2SA
2. **77-6801-A A2NA has the same appearance with 77-6800 CAN, 77-6801-A A2NA just remove the PLC reader.**

The device photo:

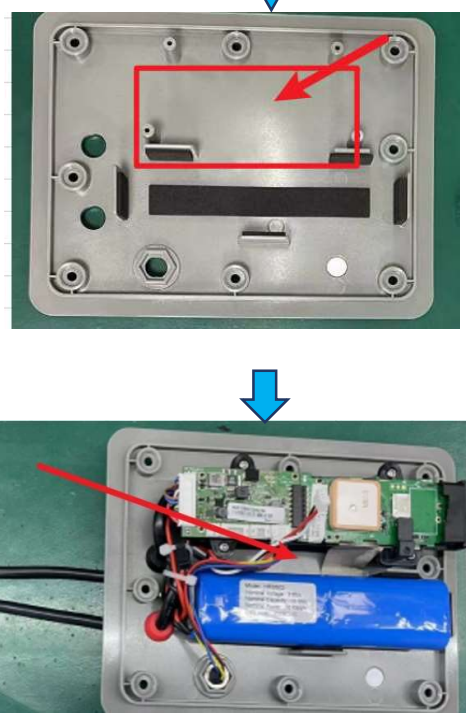


With PLC reader:77-6801-A A2SA

77-6801-A A2NA : without PLC reader:



PLC reader(ABS system monitoring)

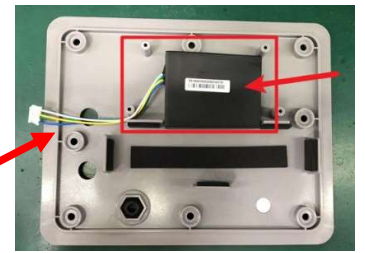


Model Difference Letter

3. **77-6811 CAN WP OHA** has no base compared with 77-6800 CAN, it only contains the above part and with PLC reader.



77-6800 CAN

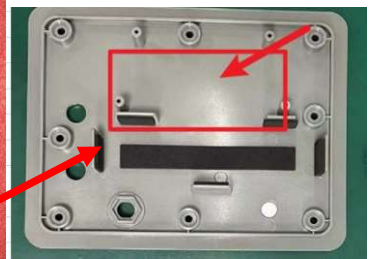


77-6811 CAN WP OHA

4. **77-6811 CAN NP OHA** has no base compared with 77-6800 CAN, it only contains the above part and without PLC reader.



77-6800 CAN

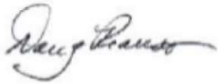


77-6811 CAN NP OHA

Model Difference Letter

Except above difference, the others are all the same between each other.

Sincerely,

Signature : 

Print name: Doug Reauso

Company: Phillips Connect Technologies, LLC