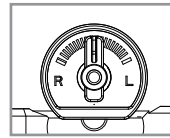


## STEERING WHEEL TRIM ADJUSTMENT



F

If the Truck can not go forward straightly you may need adjust the steering wheel trim on the bottom of the truck from time to time until the truck can go forward straight. (see diagram F)

### WARNING

**DO NOT USE TRUCK IN INCLIMATE WEATHER!**



## TROUBLESHOOTING

Before sending your truck in for repair, please check for a solution below.

Problem	Possible Cause(s)	Solution
Truck will not move.	Weak batteries; no batteries	Install new batteries in remote control and recharge the truck battery.
Truck does not respond properly to remote control.	Truck and remote not synced properly Another RC truck may be transmitting on the same radio frequency	Refer to sync section and re-sync your truck and remote. Move to a new location where no other RC trucks are present.
Truck loses connection to remote control.	Using truck in a small enclosed area Using truck indoors Low batteries in transmitter or vehicle	Move outdoors to a large open area. Install new batteries in remote control or recharge your truck.
Truck battery has fully charged, but slower than normal.	Driving truck for too long at high speeds, causing motor to overheat	Turn truck off for 10-15 minutes.

## BATTERY WARNING:

- Do not mix alkaline, standard (carbon-zinc) and rechargeable batteries (nickel-cadmium).
- Do not mix old and new batteries.
- Non-rechargeable batteries are not to be recharged.
- Rechargeable batteries are to be removed from the unit before being charged (if removable).
- Rechargeable batteries are only to be charged under adult supervision (if removable).
- Exhausted batteries are to be removed.
- The supply terminals are not to be short-circuited.
- Only batteries of the same or equivalent type as recommended are to be used.
- Batteries are to be inserted with the correct polarity.

### LITHIUM BATTERY STATEMENT:

- Battery may explode or leak chemicals if opened, exposed to fire or high temperature, installed backwards, or mixed with other battery types.

## Limited 90-Day Warranty

NORTH AMERICA

AMAX Group USA warrants to the original consumer that this product is free from any electrical or mechanical defects for a period of 90 DAYS from the date of purchase. If any such defect is discovered within the warranty period, AMAX Group USA will repair or replace the unit free of charge upon receipt of the unit, shipped postage prepaid and insured to our warranty center ALONG WITH THE ORIGINAL RECEIPT evidencing that the product was purchased from an approved AMAX retail partner and that the product is still within the 90 day warranty period. The warranty covers normal consumer use and does not cover damage that occurs in shipment or failure that results from alterations, accident, misuse, abuse, neglect, wear and tear, inadequate maintenance, commercial use or unreasonable use of the unit. Removal of any parts/components voids all warranties. This warranty does not cover cost of repairs made or attempted outside by third-party individuals or companies. Any applicable implied warranties, including warranties of merchantability and fitness, are hereby limited to 90 DAYS from the date of purchase. Consequential or incidental damages resulting from a breach of any applicable express or implied warranties are hereby excluded. Some states do not allow limitations on the duration of implied warranties and do not allow exclusion of incidental or consequential damages, so the above limitations and exclusions in these instances may not apply.

### REPAIR/REPLACE PRODUCT

If your product begins to malfunction or stop working, immediately contact our warranty center (contact details listed below). If it is determined that a return is necessary, our warranty department will issue you an RMA number/form and an address to the nearest return center for shipping the product to us. When honoring the warranty, AMAX reserves the right to either repair, replace or refund the product.

### IMPORTANT NOTICE:

We will reject and return to sender returns that are not accompanied by an AMAX issued RMA form and RMA number so make sure to contact our warranty center before attempting to return your product!

### PREPARATION FOR SHIPPING YOUR PRODUCT:

Please repack your product in a durable box, preferably in the original carton, and send it prepaid, and adequately insured. Include the RMA form that was issued by our warranty department along with your daytime telephone number and email address inside the shipping carton. If your warranty has expired and you still require service please contact our customer care team For further information please send all inquiries to: [customercare@amaxbrands.com](mailto:customercare@amaxbrands.com)

### IMPORTANT NOTICE!

**DO NOT ATTEMPT TO SHIP YOUR PRODUCT BACK WITHOUT FIRST CONTACTING OUR WARRANTY DEPARTMENT AT:**

[www.amaxbrands.com](http://www.amaxbrands.com)

Email: [customercare@amaxbrands.com](mailto:customercare@amaxbrands.com)

## SAFETY WARNINGS!

- Improper use of batteries may lead to overheating, breakage or leaking.
  - Do not mix old and new batteries.
  - Do not mix different battery brands.
  - Install batteries with correct polarity. The flat side (negative terminal) of the battery should rest against the spring.
  - Remove dead batteries immediately.
  - Avoid liquids, which can short circuit the batteries.
  - The truck or remote will become unresponsive when batteries are low, at which point you should replace all batteries with new ones.
  - Remove the batteries if you will not use the truck for a long time.
- Avoid using near furniture or glass to prevent damage to these objects.
- Do not play on roads.
- Do not play in crowded areas to avoid injury or damage. Choose a safe location away from traffic.
- Do not use truck during a storm or when lightning or thunder are present.
- Do not use in a wet, sandy or muddy environment as truck may become damaged.
- Do not modify or attempt to replace the built-in original antenna on the remote or truck. Doing so will damage the set and affect operation.
- Do not pull on any wires that are part of the truck. Such action may cause the wires to break and the truck to malfunction.
- Keep fingers, hair and clothes away from the truck's spinning tires. Failure to do so may result in physical injury.
- Never aim the truck at other people.
- Do not throw the truck or purposely hit it with any object.
- Store truck in a cool environment, away from high-temperature sources such as fires, stoves, radiators, etc.
- This truck has no user-serviceable parts. Do not attempt to modify components or circuit board.

## FCC Part 15 C Notice

**CAUTION:** Changes or modifications not expressly approved by the party responsible for compliance could void the user's authority to operate the equipment.

**NOTE:** This equipment has been tested and found to comply with the limits for a Class B digital device, pursuant to Part 15 of the FCC Rules. These limits are designed to provide reasonable protection against harmful interference in a residential installation. This equipment generates, uses and can radiate radio frequency energy and, if not installed and used in accordance with the instructions, may cause harmful interference to radio communications. However, there is no guarantee that interference will not occur in a particular installation. If this equipment does cause harmful interference to radio or television reception, which can be determined by turning the equipment off and on, the user is encouraged to try to correct the interference by one or more of the following measures:

- Reorient or relocate the receiving antenna.
  - Increase the separation between the equipment and receiver.
  - Connect the equipment into an outlet on a circuit different from that to which the receiver is connected.
  - Consult the dealer or experienced radio/TV technician for help.
- This device complies with Part 15 of the FCC Rules. Operation is subject to the following two conditions:
- (1) this device may not cause harmful interference, and
  - (2) this device must accept any interference received, including interference that may cause undesired operation.

Conforms to safety requirements of FCC, ASTM and CPSIA.

Rock Force™ is the registered trademark of Amax Group USA, LLC.  
AMAX Group USA Address: 12645 Memorial Dr Suite F1 #388 Houston, TX 77024  
© 2021 All Rights Reserved. visit us at [www.amaxbrands.com](http://www.amaxbrands.com)



Made in China  
C010-USA-V2.0

**ROCK FORCE**  
1:10 SCALE  
4WD OFF-ROAD VEHICLE



## INSTRUCTION MANUAL

Thank you for choosing ROCK FORCE™. With proper care, your new ROCK FORCE™ will provide you with many hours of enjoyment. Please read this instruction manual completely before using the product for the first time, and then keep this manual in a handy place for future reference.

FOR AGES  
**8+**

Colors and styles may slightly vary.

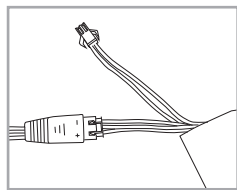
## PACKAGE CONTENTS

- ROCK FORCE™ Radio Controlled High Speed Vehicle
- Remote Control
- USB Charger
- 7.4V Li-poly Battery Pack

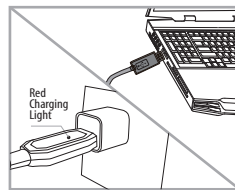
## CHARGING THE BATTERY

1. Insert the white, 3-wire battery charging plug into the USB charger's socket. The charging plug and the USB charger's socket fit only one way. Do not force them (see illustration A).
2. Connect the USB end of the cable to your computer's USB port or a USB wall charger (see diagram B). The Red CHARGE indicator light turns on to show that charging is in progress.
3. Average charging time is approximately 2.5 hours (via 5.0V 2A USB wall charger). The truck operates for approximately 40 minutes on full charge.
4. The red charging indicator turns off when the battery is fully charged.

Note: Periodically examine the charger for external damage. External damage to the charger may result in the risk of fire, electric shock, or injury to persons. Never use a damaged adapter.



A

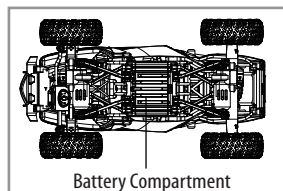


B

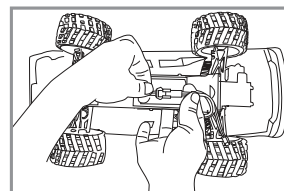
**IMPORTANT: ALWAYS DISCONNECT CHARGER CORD AFTER CHARGING. NEVER LEAVE CHARGER CONNECTED TO BATTERY OVERNIGHT OR FOR EXTENDED PERIODS OF TIME.**

## SET-UP

1. Install the included Li-poly battery into the truck.
  - a) Remove the battery compartment cover on the bottom side of the truck (see diagram C).
  - b) Connect the rechargeable Li-poly battery cord directly to the ROCK FORCE™'s power cord socket, make sure the connection is secure. The Li-poly battery connecting plug and the ROCK FORCE™'s socket fit in only one direction never force a connection (See diagram D).
  - c) Carefully replace the battery compartment.

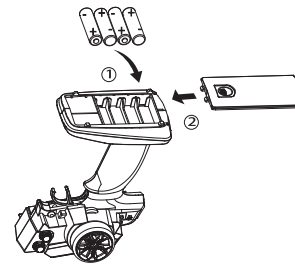


C



D

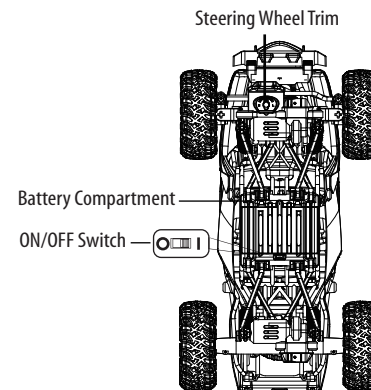
2. Install batteries into the remote control. Open the battery cover on the bottom of the remote control (see diagram E). Insert 4 AA batteries (not included) into the battery compartment, matching polarity (+ and -) marked inside. Replace the battery cover.



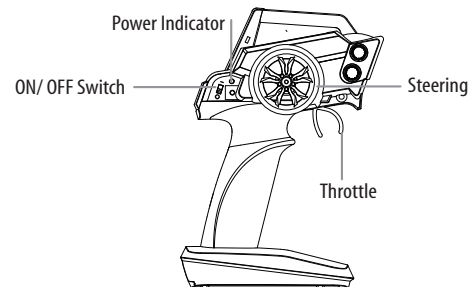
Batteries Not Included (4xAA)

E

## TRUCK DIAGRAM (Bottom View)



## REMOTE DIAGRAM



## SYNCING YOUR ROCK FORCE™

Your ROCK FORCE™ features an automatic 2.4G channel selection system that allows up to 8 people to race side by side in the same wireless range.

### For One Player:

1. Before starting, make sure that the power on both your remote control and truck are in the OFF position. Make sure that there are no other 2.4G devices in the area.
2. Turn ON the truck and set it down on a flat surface.
3. Turn ON the remote control. When the remote control's power indicator flashes, pull the throttle all the way down and the power indicator lights continuously. This indicates that your truck and remote control have successfully synced. If pairing fails, repeat steps 1-3.

### For Multiple Players:

1. Before starting, make sure that the power on all trucks and controllers are in the OFF position. Make sure that there are no other 2.4G devices in the area.
2. Each person will have to sync a truck individually at a different time to avoid interference. Follow steps 1 to 3 above, making sure to keep away from other people while also making sure that no one else is syncing at the same time.
3. After syncing, leave the truck ON until all players have synced their trucks.
4. If there is interference, all players must turn off their controllers and trucks and restart the syncing process.

## OPERATION

THIS IS A HIGH-SPEED OUTDOOR RC TRUCK. DO NOT PLAY INSIDE YOUR HOME OR OTHER SMALL ENCLOSED AREAS.

### 1. Turn your truck on:

- Pick up your truck and turn it over to make sure the battery is properly installed and the battery compartment door is properly closed and locked.
- Sync your truck and remote control and set the truck on the ground.

### 2. Driving your truck:

- Pull the throttle to drive forward.
- Push the throttle forward to make truck move in reverse.
- Turn the steering control to the counterclockwise to turn the truck left. Turn steering to the clockwise to turn the truck right.
- To break or quickly stop simply pull or push the throttle in the opposite direction and release the throttle.