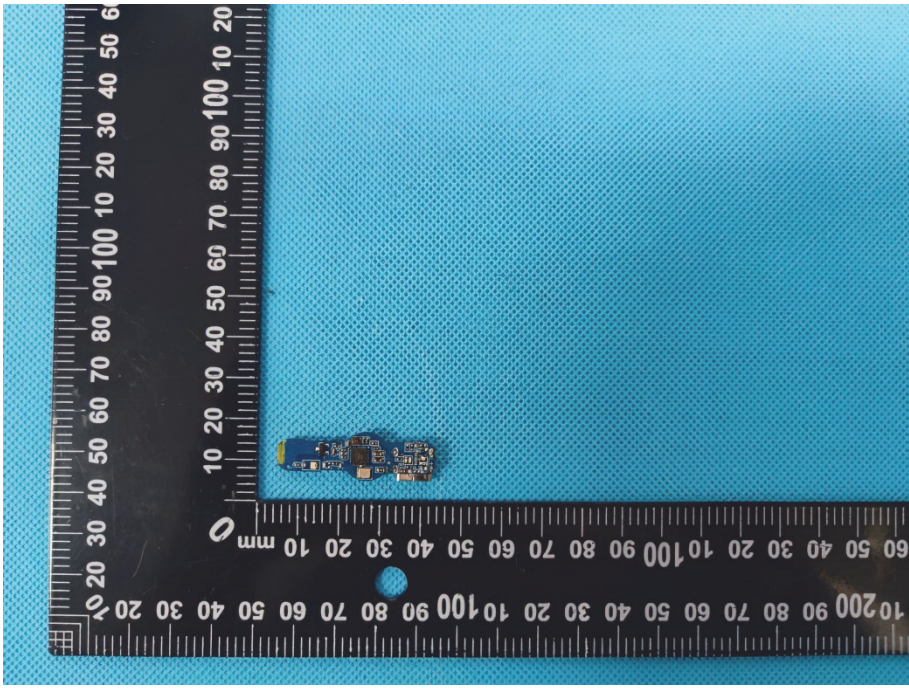
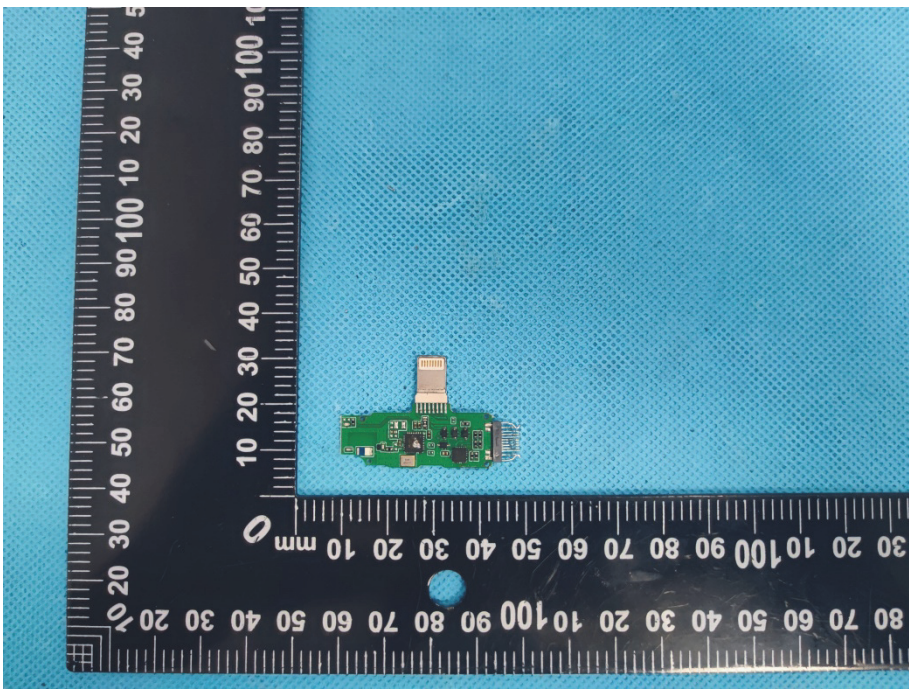
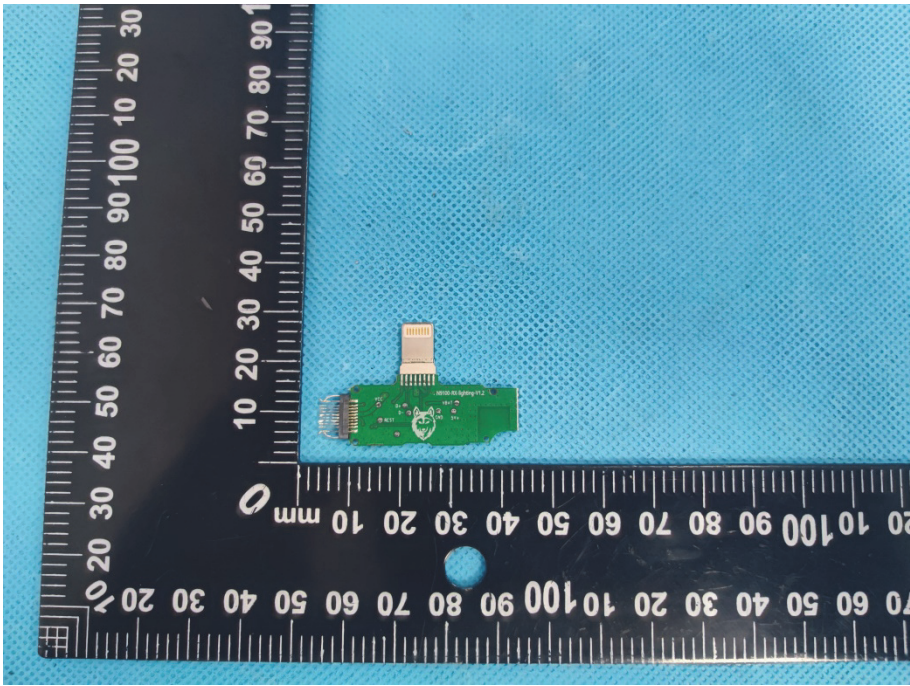
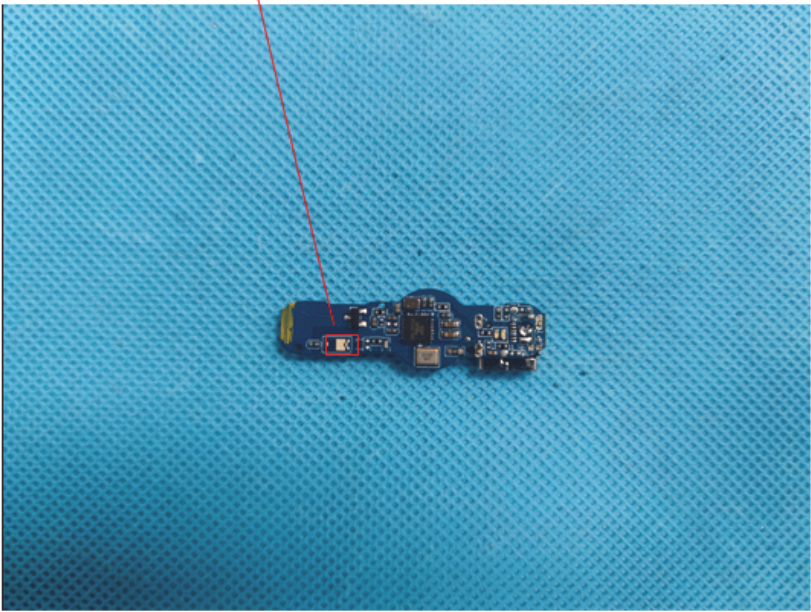
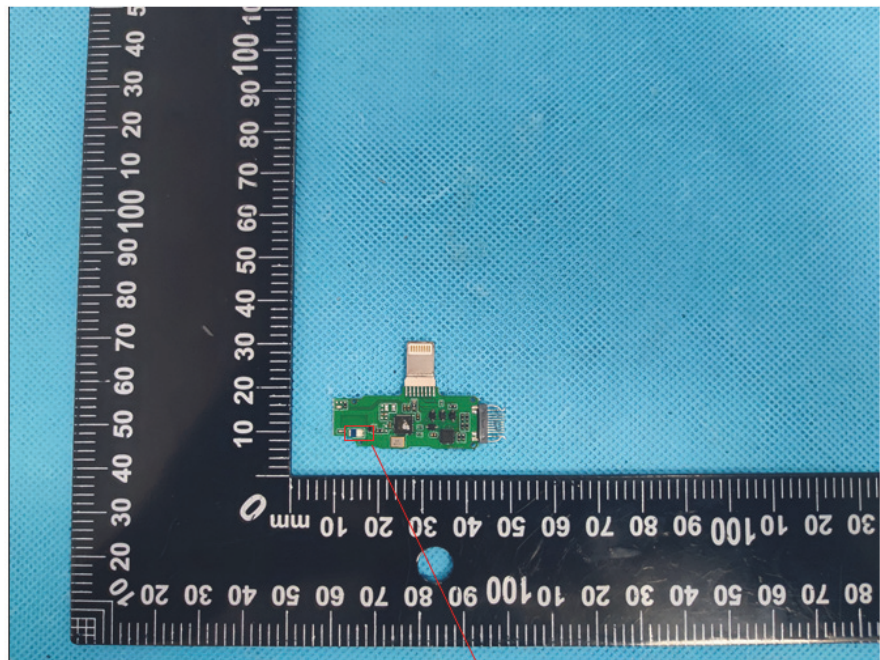


<p>Solder Board-Component View 4</p>	 A photograph showing a small, rectangular, blue solder board component. The component is positioned on a blue textured surface. A black ruler with white markings is placed to the left and bottom of the component for scale. The ruler shows millimeter and centimeter markings. The component appears to be a small PCB with various components and a connector.
<p>Solder Board-Component View 5</p>	 A photograph showing the same solder board component from a different perspective. The component is green and features a prominent gold-colored connector on one side. It is placed on a blue textured surface next to a black ruler for scale. The ruler shows millimeter and centimeter markings.

<p>Solder Board-Component View 6</p>	 <p>A photograph of a small green printed circuit board (PCB) component with a gold-plated connector. The component is placed on a blue textured surface next to a black ruler with white markings. The ruler shows measurements in millimeters, with the component positioned between the 10mm and 30mm marks.</p>
<p>Antenna View 1</p>	<p>2.4GHz TX Antenna</p>  <p>A photograph of a blue PCB component, identified as a 2.4GHz TX Antenna. A red rectangular callout box with the text "2.4GHz TX Antenna" is positioned above the component, with a red line pointing to a specific area on the board.</p>

Antenna View 2



2.4GHz RX Antenna