

## USAGE MANUAL

Gravity Wireless Rechargeable Phone Holder

please read this instructions completely and keep it properly

## ZLPX-B

### Gravity wireless charging -A



Material: aluminum +ABS

Size: 100 mm \* 98 mm

Input: 5V/2A or 9V/ 1.67a

Output: 5 W / 7.5 W / 10 W

Execution standard no. :

Q/CDF 002-2018

Wireless charging standard:

compatible with qi-bpp /SFC/iphone 7.5w

Input interface: Micro USB

Working frequency:110.1KHz~175KHz

Effective charging distance: 2-8mm

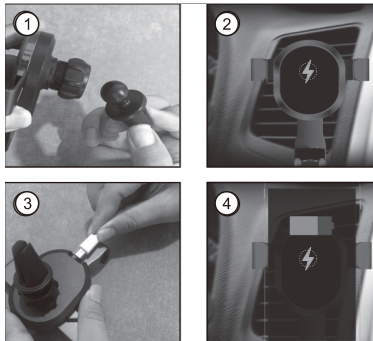
Working temperature: - 10 ~ + 50 °C

Storage temperature: - 20 ~ + 70 °C

### CAUTION

1. Use charger, accessories and supplies approved by the manufacturer.
  2. Do not operate or watch the charger while driving.
  3. Please use the product within the recommended temperature range, such as outside the recommended temperature range Can damage the product or shorten the service life.
  4. Do not slide the charger or device or cause collision.
  5. Prevent the charger from contacting conductive materials such as liquid, metal, metal powder, dust or pencil core. Do not let children or animals chew or swallow chargers.
  7. Do not remove, modify or repair the charger.
  8. Do not place the magnetic stripe card (including credit card, phone card, bank card, bankbook and registration card, etc.) near the charger.
- The wireless charging magnetic field may damage the magnetic stripe card.

### HOW TO USE



1. Rotate and fix the wireless charging part and the outlet clamp.
2. Press the outlet clamp switch to fix the wireless charge on the air outlet blade of the air conditioner.
3. Connect the power cord of car charging and plug micro-usb plug into the wireless charging source.
4. Place the phone on the wireless charging stand, then automatically clamp and start charging.

#### IMPORTANT NOTE:

1. When using wireless charging, please ensure that there is no metal object between wireless charging and mobile phone.
2. 10W quick charging requires adapters above QC
3. When the phone is fully charged, remove it from the wireless charger.

### FCC STATEMENT :

This device complies with Part 15 of the FCC Rules. Operation is subject to the following two conditions:

- (1) This device may not cause harmful interference, and
- (2) This device must accept any interference received, including interference that may cause undesired operation.

**Warning:** Changes or modifications not expressly approved by the party responsible for compliance could void the user's authority to operate the equipment.

**NOTE:** This equipment has been tested and found to comply with the limits for a Class B digital device, pursuant to Part 15 of the FCC Rules. These limits are designed to provide reasonable protection against harmful interference in a residential installation. This equipment generates uses and can radiate radio frequency energy and, if not installed and used in accordance with the instructions may cause harmful interference to radio communications. However, there is no guarantee that interference will not occur in a particular installation. If this equipment does cause harmful interference to radio or television reception, which can be determined by turning the equipment off and on, the user is encouraged to try to correct the interference by one or more of the following measures:

- Reorient or relocate the receiving antenna.
- Increase the separation between the equipment and receiver.
- Connect the equipment into an outlet on a circuit different from that to which the receiver is connected.
- Consult the dealer or an experienced radio/TV technician for help.

### FCC Radiation Exposure Statement:

This equipment complies with FCC radiation exposure limits set forth for an uncontrolled environment. This equipment should be installed and operated with minimum distance 20cm between the radiator & your body.