



深圳市金利源兴电子有限公司

Shen zhen Golden-Resource Electronic Co.,Ltd.

规格承认书

SPECIFICATION FOR APPROVAL

日期 Date	2024/04/08
编号 File No	24040801
版本 Revision	1.0

客户

CUSTOMER:

客户料号

CUSTOMER NO:

品名

PART NAME:

2.4G Antenna

供方料号

SUPPLIER NO:

YJW01.029.124.303A

送样日期Date:

送样数量Q “TY:

客户确认CUSTOMER APPROVED BY

APPROVAL	CHIEF	SUPERVISOR

供方确认 SUPPLIER SIGNATURE

APPROVAL	CHECK	DESIGN
ChenGuoqiang	XieLi	ChenXingcheng

YJ-RD-F04-A

add: 深圳市龙华新区梅龙路南贤商业广场B座17A-03A Tel:0755-83524561

add: 17A-03A, Block B, Nanxian Commercial Plaza, Meilong Road,

Longhua New District, Shenzhen Tel:0755-83524561



承认书项目表

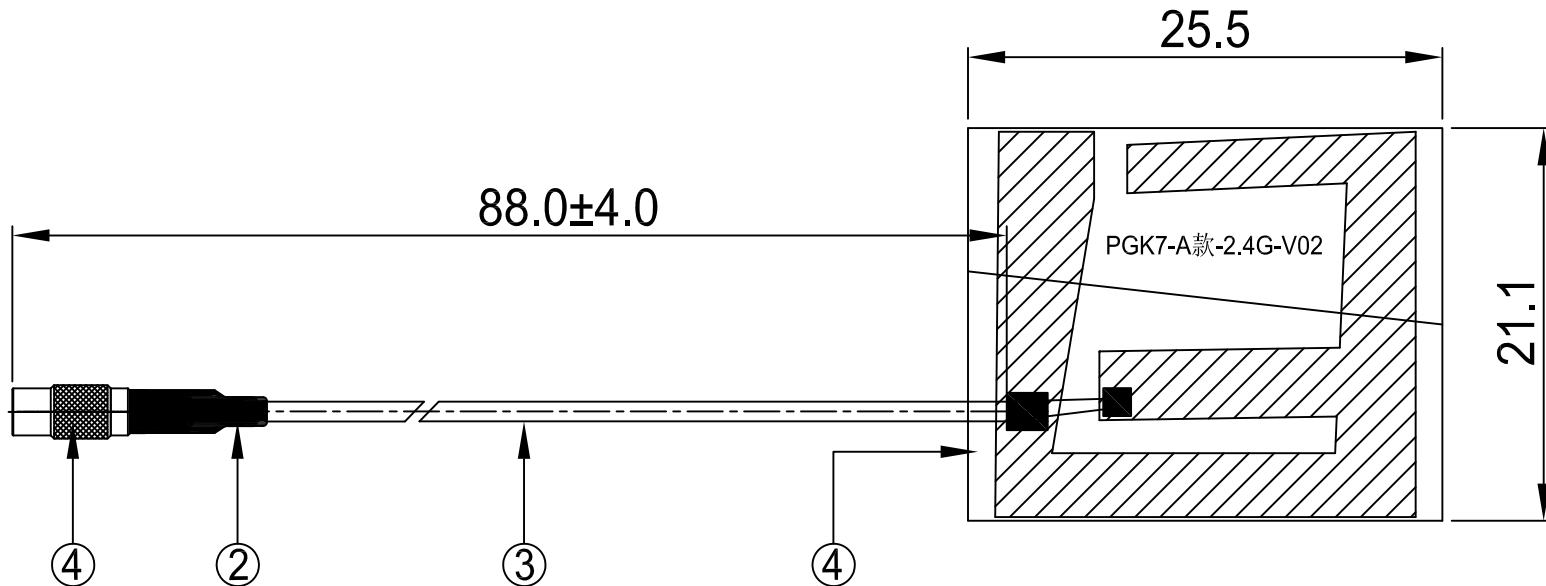
Spec Item List

NO	内容 (Contents)	页数 (Number of Page)	页码 (Page Code)
1	承认书封面 (Spec Cover)	1	1
2	承认书项目表 (Spec Item)	1	2
3	工程成品图 (Drawing)	1	3
4	天线规格 (Antenna Specification)	1	4
5	S参数测试 (S Parameter)	1	5
6	无源测试 (Passive Test)	2	6 ~ 7
7	方向图 (Radiation Pattern)	3	8 ~ 10
8	天线装配图 (Antenna Profile)	3	11 ~ 13
9	材质证明 (Material Certificate)	47	14 ~ 60
10	RoHS报告 (RoHS Test Report)	**	**
11	N/A	N/A	N/A
12	-	-	-
13	-	-	-

RoHS
Compatible

CUSTOMER	
PART NO	

REV.	DESCRIPTION	DATE
△	首次发行	2024-03-30
△		



深圳市金利源兴电子有限公司

4	FPCB	25.5*21.1MM	FPCB	FPC1271XA.P01	1
3	Coaxial Cable	O.D.1.37 Gray	O.D.1.37	COA10010A.P01	1
2	White Hot Shrink Tube	WhiteL15mm/Ø2.5mm	EVA	TUB1000XA.P01	1
1	MCX Female	Au Plated	Cu	CON10159A.P01	1
NO	PART NAME	DESCRIPTION	Material	Part Number	Q.TY

PART NAME: 2.4G Antenna			
PART NO.: YJW01.029.124.303A		DATE: 2024-03-30	
APPROVED BY	CHECKED BY	DESIGNED BY	 Tolerance X.X ±0.50 X.XX±0.15 X° ±3°
殷涛	唐国浩	陈兴易	
UNITS: mm SCALE: 1/1 REVISION: A			



天线规格

Antenna Specification

Electrical Properties

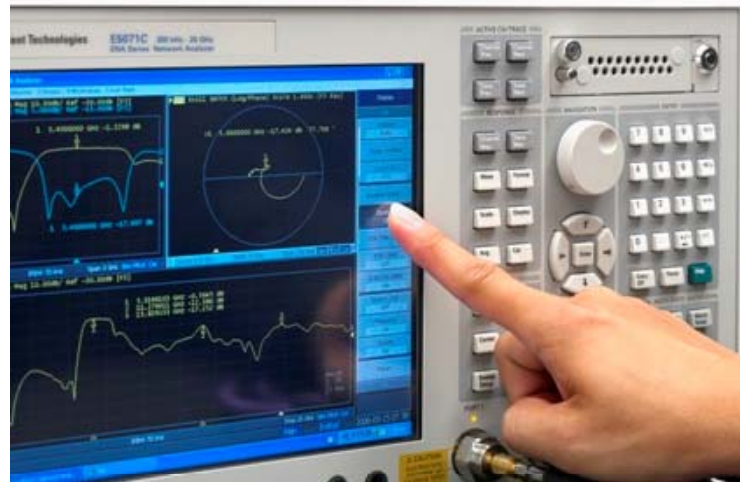
Frequency	2.4-2.5GHz
Impedance	50 Ohm Nominal
V.S.W.R	3.5 Max
Gain	1.0 dBi
Radiation	Omni-directional
Polarization	Linear

Physical Properties

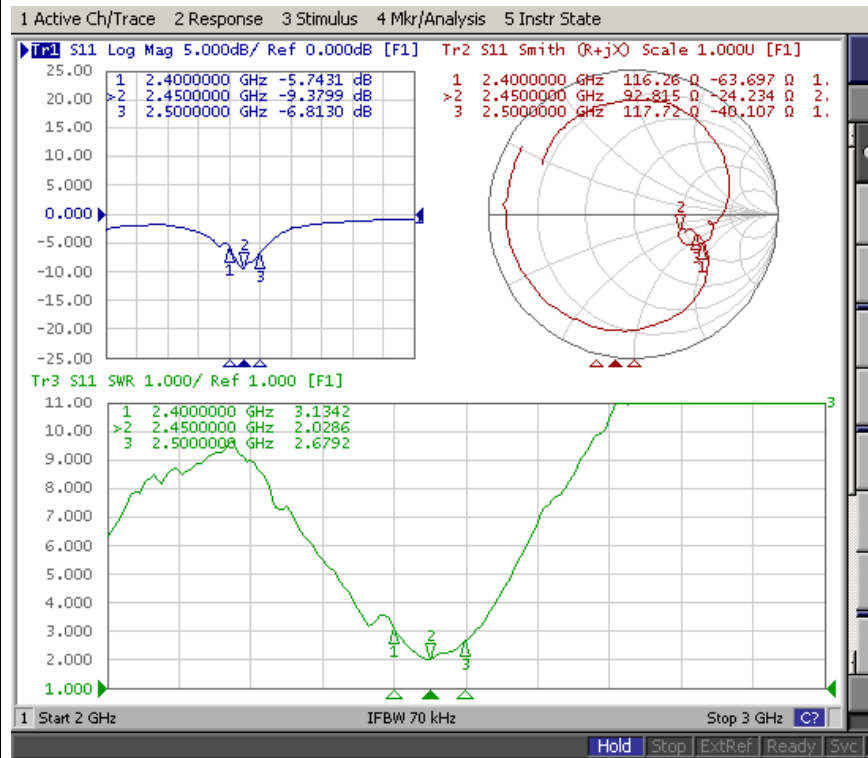
Connector	MCX Female
Cable Type	O.D.1.37mm
Cable Length	88mm
Cable Color	Gray
Operating Temp.	-40 ~ +85 °C
Storage Temp / Humidity	25±5°C / <70%



Agilent E5071B

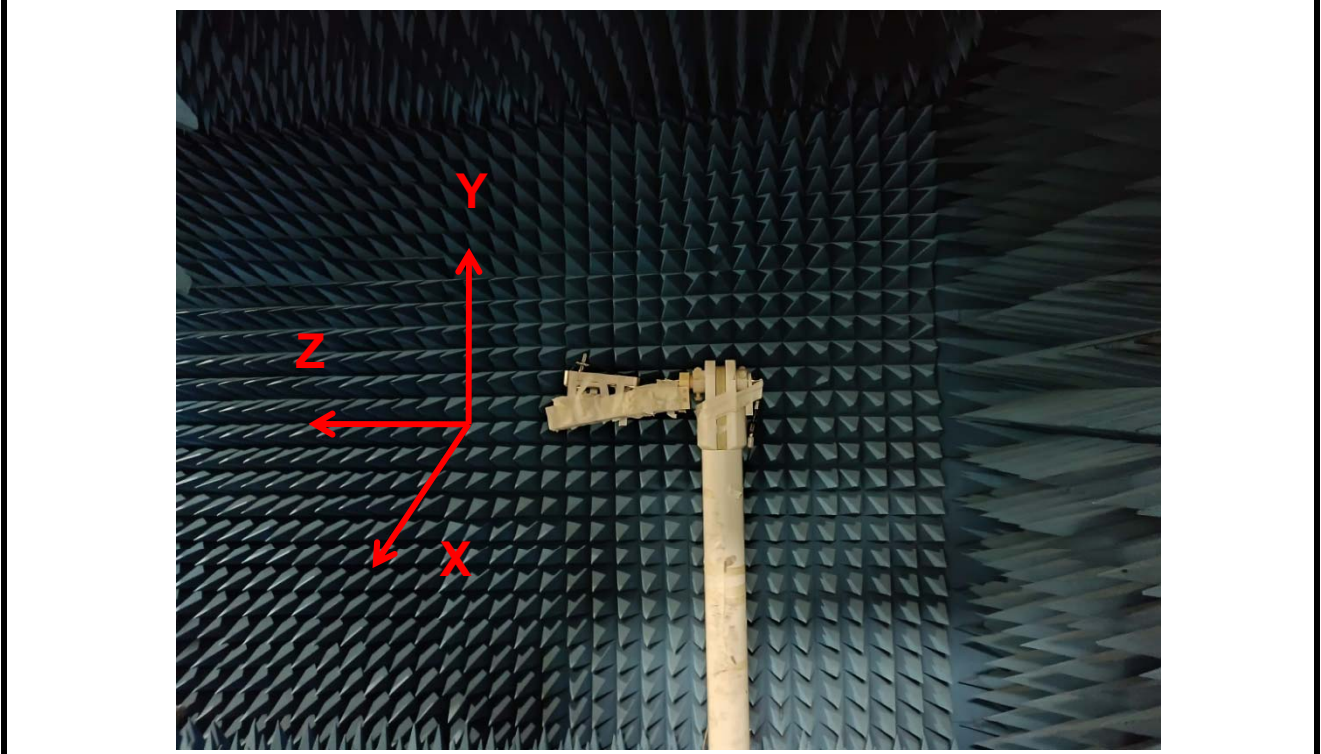
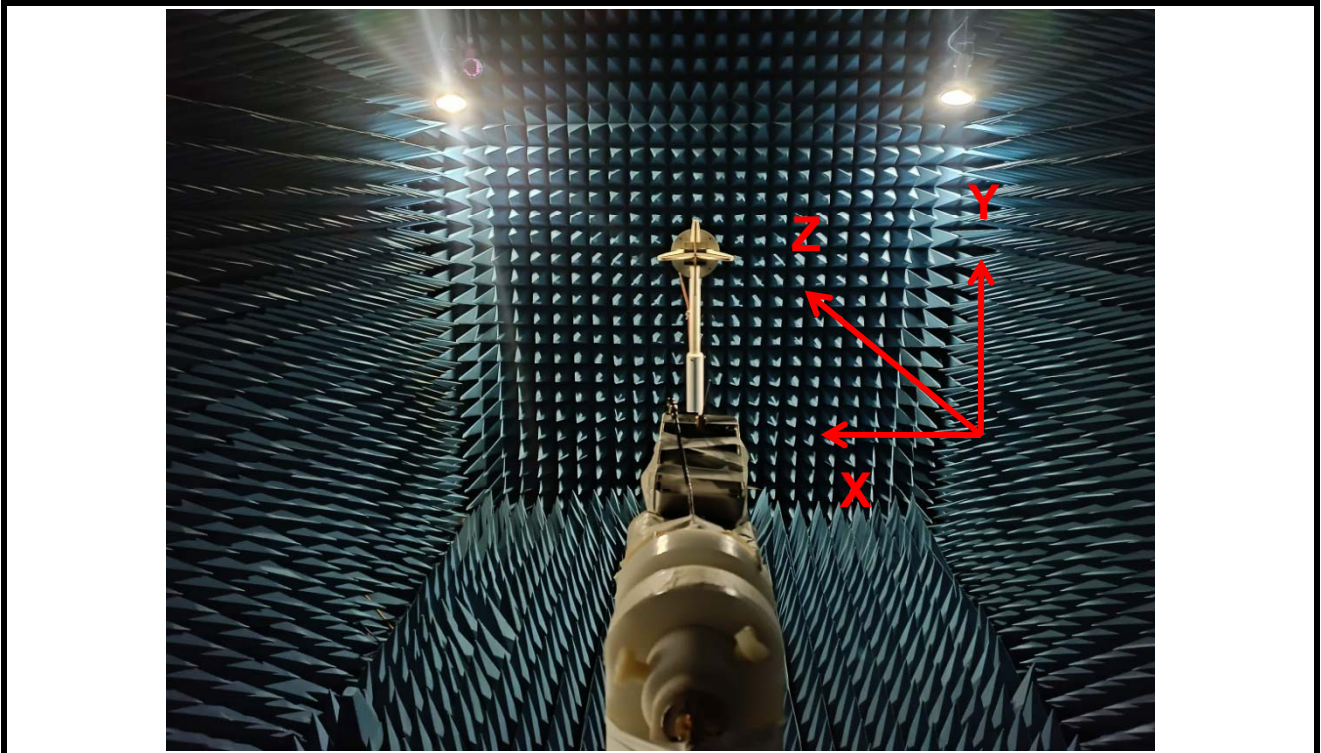


S Parameter Test // WiFi Antenna





Antenna Passive Test





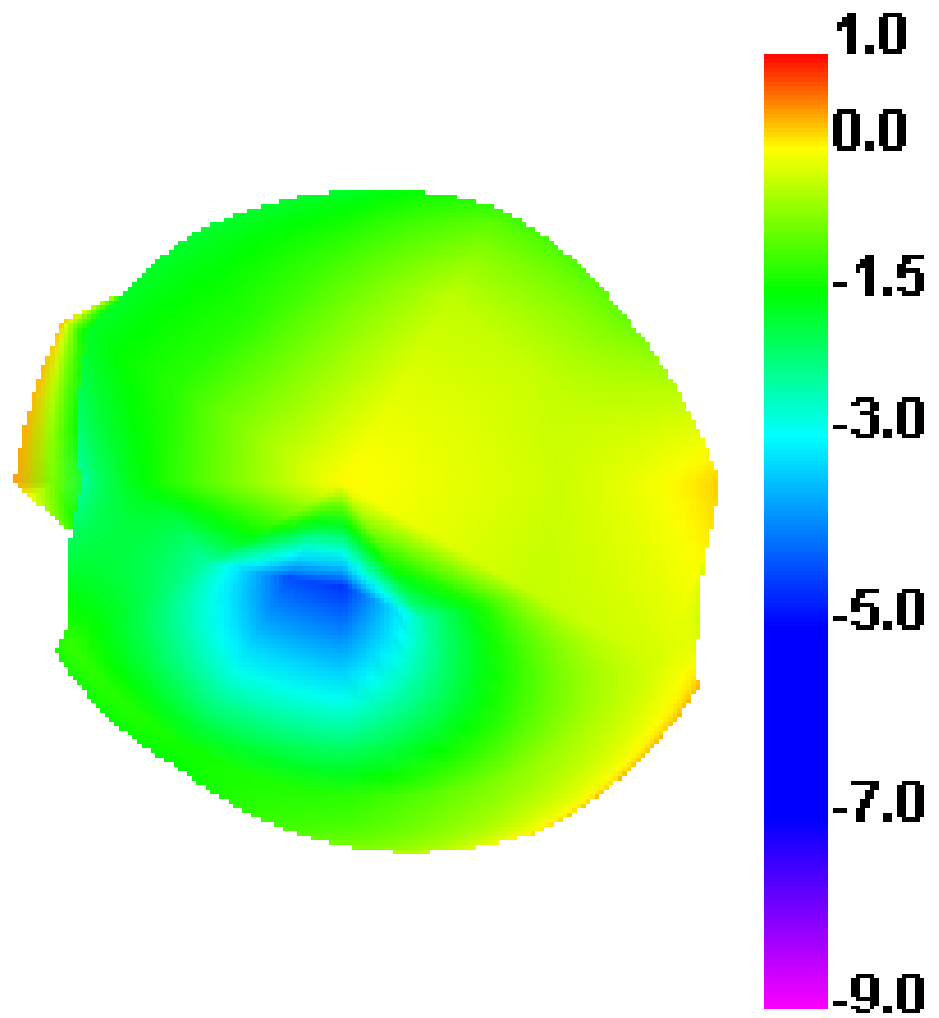
Passive Test For WiFi Antenna

Freq (MHz)	Effi (%)	Effi (dB)	Gain (dBi)
2400	40.4	-3.9	1.0
2410	42.2	-3.8	1.0
2420	41.7	-3.8	0.6
2430	40.0	-4.0	0.4
2440	37.6	-4.3	0.3
2450	35.8	-4.5	0.3
2460	32.0	-5.0	-0.2
2470	33.9	-4.7	0.0
2480	33.8	-4.7	0.2
2490	31.8	-5.0	-0.1
2500	28.8	-5.4	-0.8



Radiation Pattern For WiFi Antenna

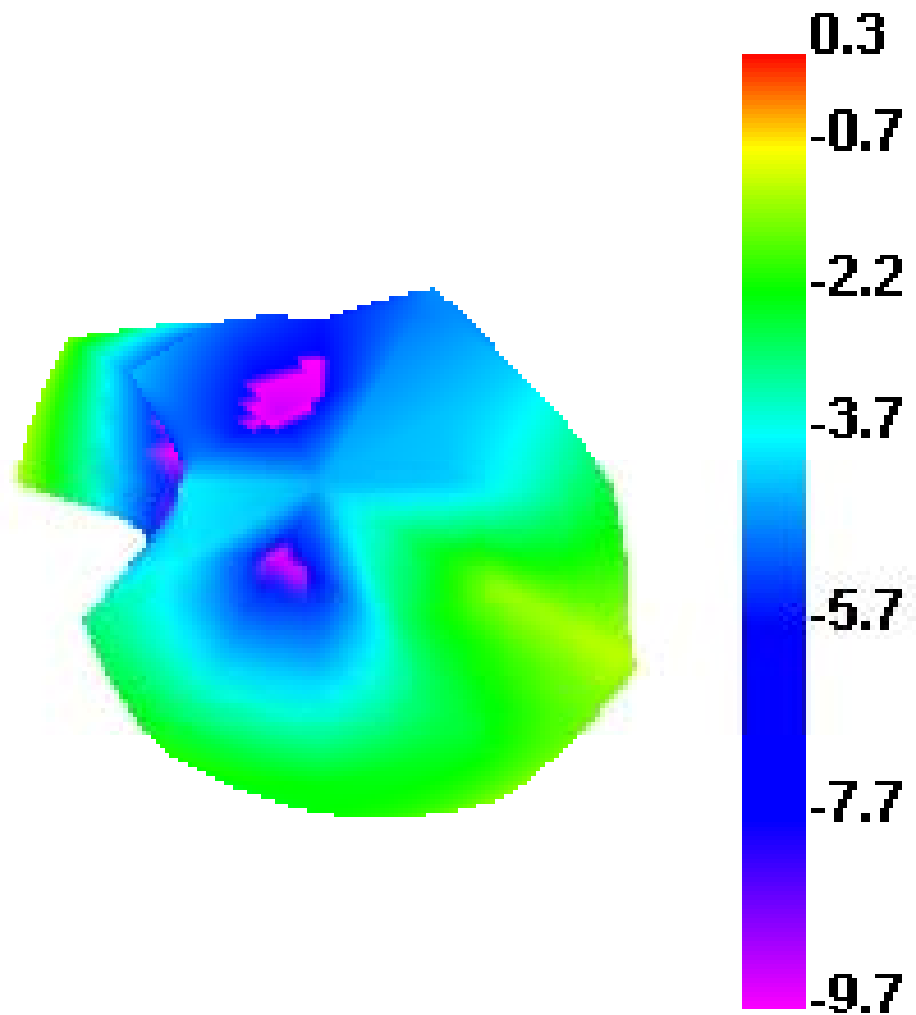
2400.000MHz





Radiation Pattern For WiFi Antenna

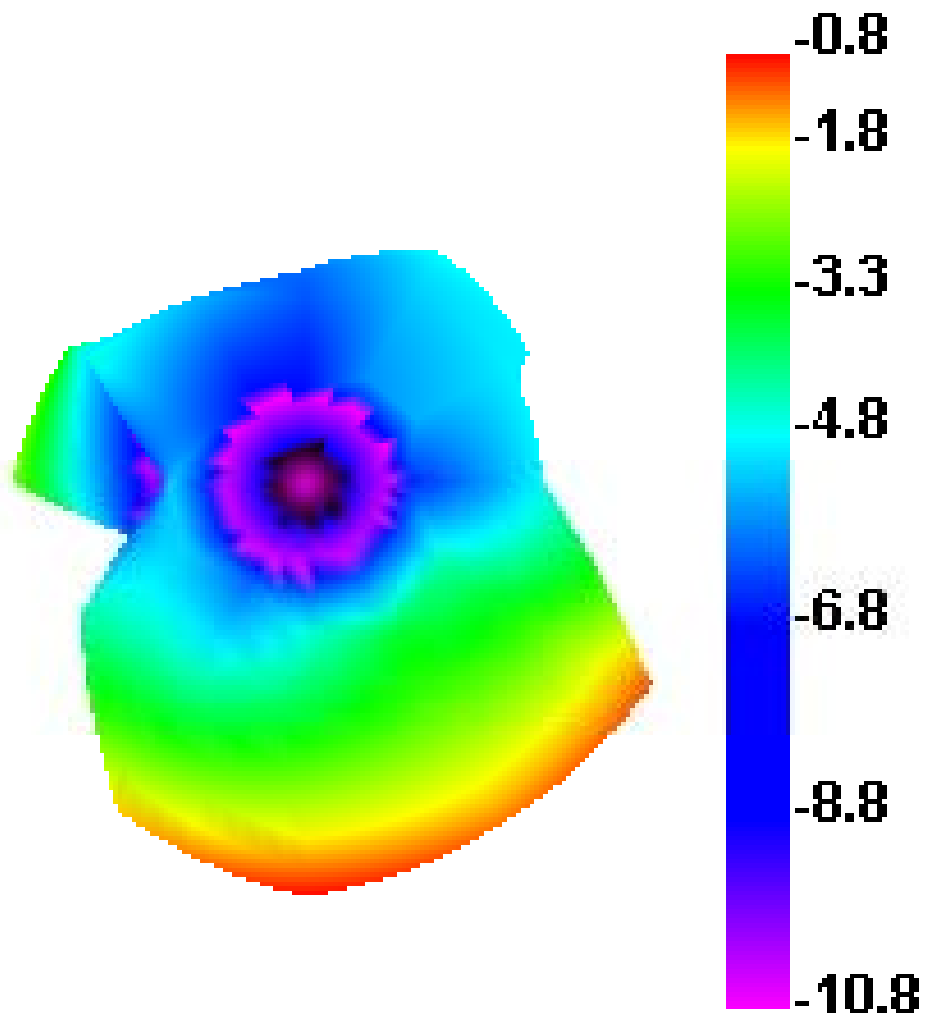
2450.000MHz





Radiation Pattern For WiFi Antenna

2500.000MHz





Device





*Antenna
WiFi*





WiFi Antenna