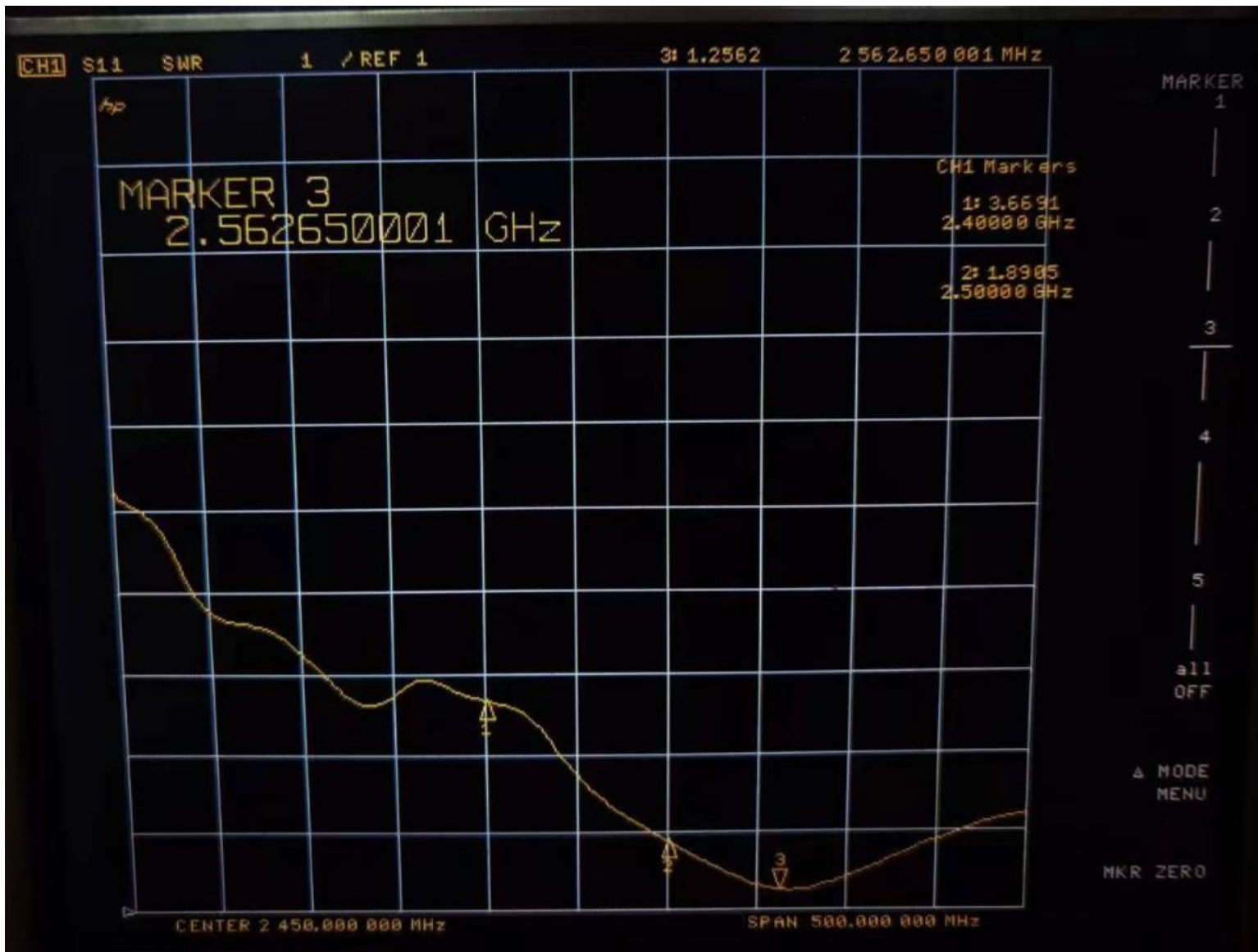




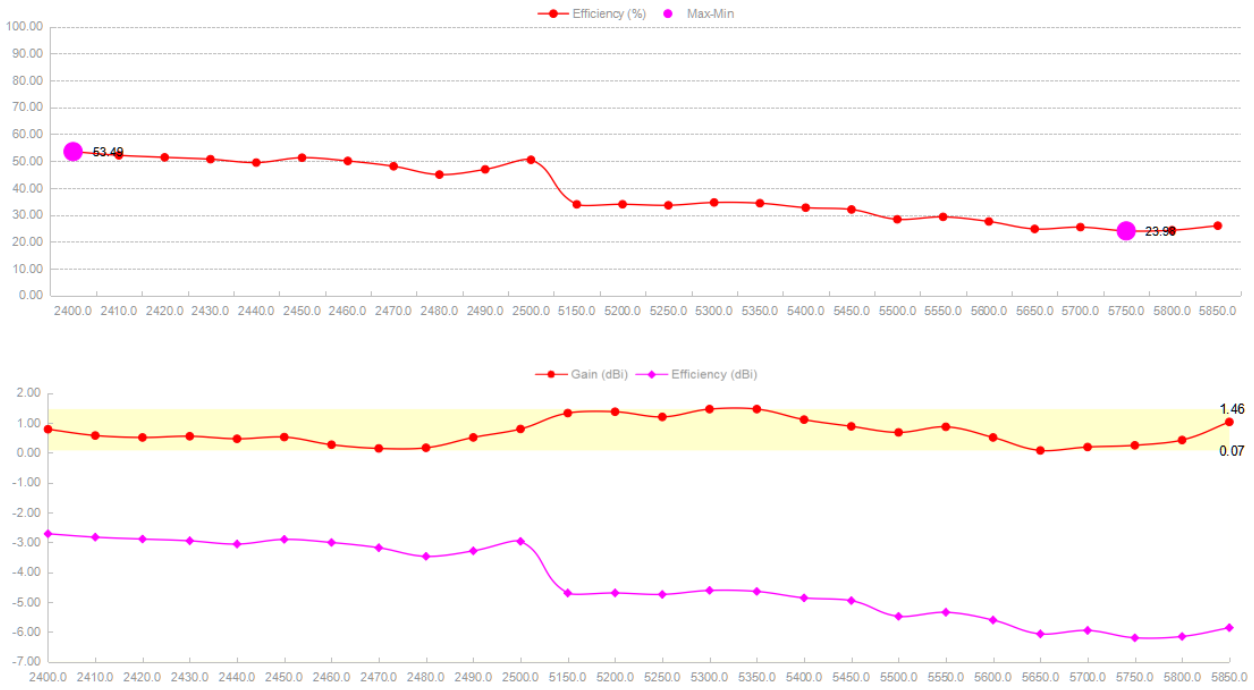
## 二. Antenna VSWR Diagram



### 三. Passive Test Data Gain Efficiency

Frequency ID	1	2	3	4	5	6	7	8	9	10	11
Frequency (MHz)	2400.0	2410.0	2420.0	2430.0	2440.0	2450.0	2460.0	2470.0	2480.0	2490.0	2500.0
Efficiency (dBi)	-2.72	-2.83	-2.89	-2.95	-3.06	-2.91	-3.01	-3.18	-3.47	-3.29	-2.97
Gain (dBi)	1.63	1.88	2.51	2.53	2.69	2.51	2.64	2.48	2.54	2.60	2.41
Efficiency (%)	67.34	68.26	69.19	70.76	71.26	70.95	72.24	72.06	72.04	71.33	73.39
Directivity (dB)	3.50	3.40	3.40	3.50	3.52	3.43	3.27	3.33	3.64	3.80	3.76
Peak Gain Position (Theta)	92.00	75.00	81.00	79.00	77.00	77.00	77.00	91.00	91.00	91.00	91.00
Peak Gain Position (Phi)	247.00	227.00	236.00	232.00	228.00	224.00	223.00	292.00	293.00	294.00	295.00
Efficiency ThetaPol (%)	51.75	50.36	49.52	48.81	47.53	49.30	48.24	46.24	43.16	45.07	48.59
Efficiency PhiPol (%)	1.74	1.74	1.83	1.85	1.87	1.92	1.77	1.79	1.77	1.80	1.83
Upper Hem. Efficiency (%)	27.91	27.45	27.44	27.34	26.75	27.60	26.56	25.25	23.65	24.98	27.52
Lower Hem. Efficiency (%)	25.59	24.65	23.91	23.32	22.65	23.62	23.45	22.78	21.29	21.89	22.90
T90(H)圆度	4.78	4.81	4.98	5.34	5.48	5.28	5.07	5.21	5.76	6.03	6.15
Gain 15deg (dBi)											
E1(XZ)波瓣宽度	69.00	71.00	71.00	71.00	70.00	73.00	75.00	76.00	76.00	76.00	76.00
E1(XZ)前后比	5.51	5.92	6.12	5.65	5.16	4.98	5.26	5.70	5.73	5.38	5.01
E2(YZ)波瓣宽度	66.00	66.00	67.00	68.00	68.00	68.00	66.00	65.00	64.00	62.00	61.00
E2(YZ)前后比	5.53	5.76	6.27	6.51	6.68	6.72	6.10	5.40	4.87	4.84	5.33
最大增益处轴比(P)	15.72	14.97	15.17	13.56	12.54	12.94	13.73	27.28	27.21	28.19	29.25
仰角10度最差(大)轴比(P)	64.23	58.47	60.21	57.12	56.58	59.00	69.98	80.38	63.08	68.34	57.59
Hc(XY)波瓣宽度	213.00	216.00	214.00	206.00	202.00	204.00	209.00	208.00	202.00	193.00	191.00
Hc(XY)前后比	0.00	0.00	0.00	0.00	0.00	0.00	0.06	0.00	0.00	0.00	0.00
左旋圆极化效率(%)	28.24	27.21	27.42	26.75	26.11	27.29	26.33	26.00	24.70	25.83	27.74
右旋圆极化效率(%)	25.25	24.89	23.94	23.91	23.29	23.93	23.68	22.03	20.24	21.04	22.69

## 四. Passive test data graph



## 五. Passive test data 3D diagram

