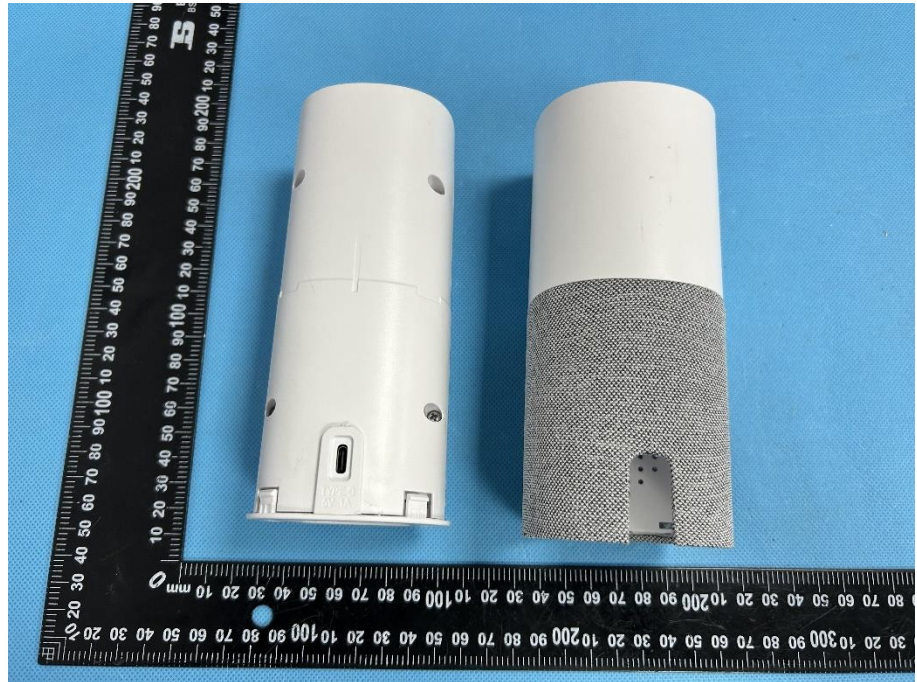
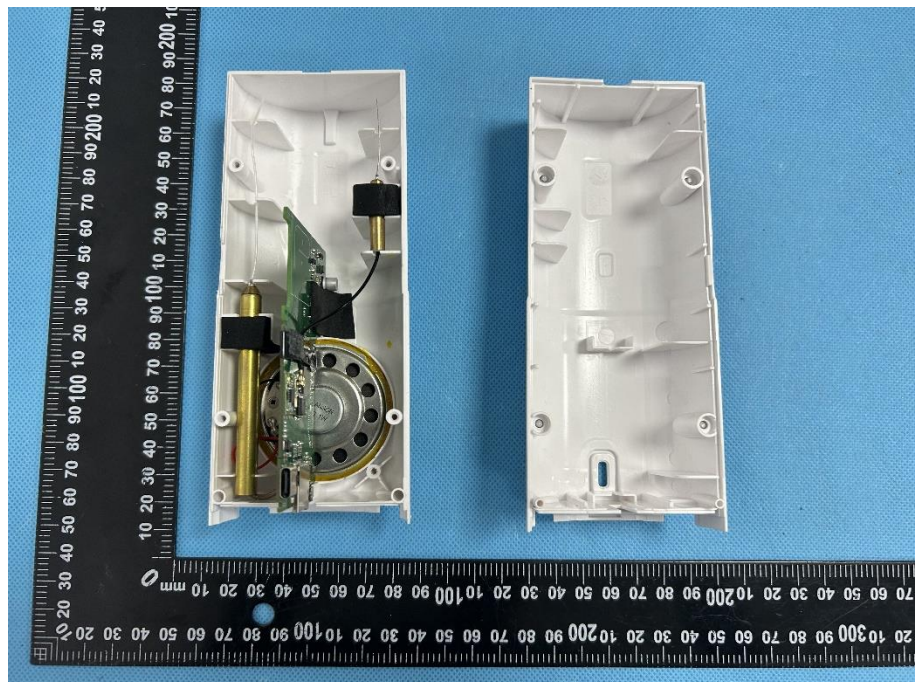


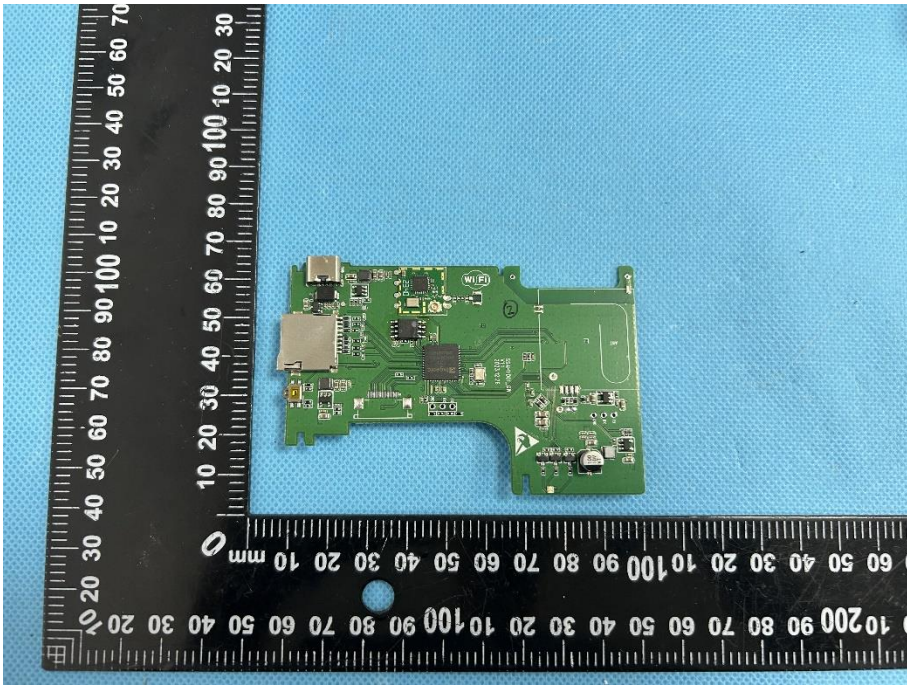
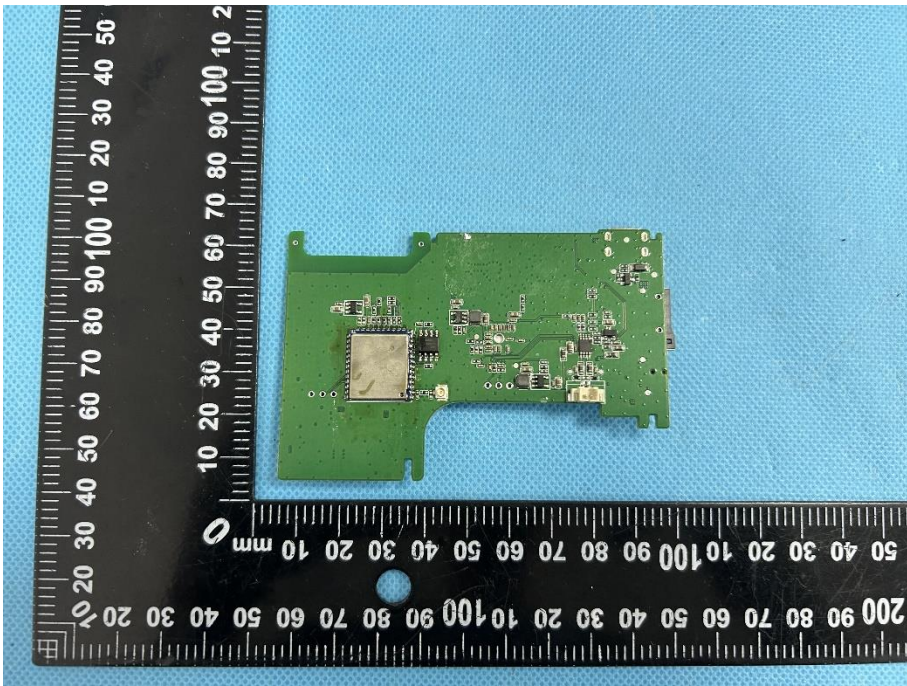
EXHIBIT 3 - EUT INTERNAL PHOTOGRAPHS

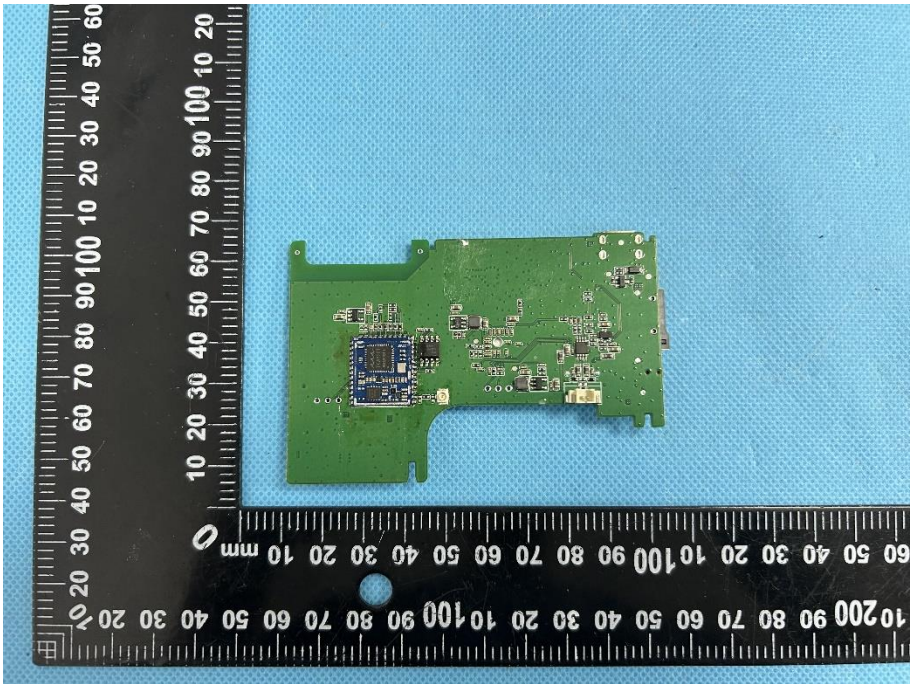
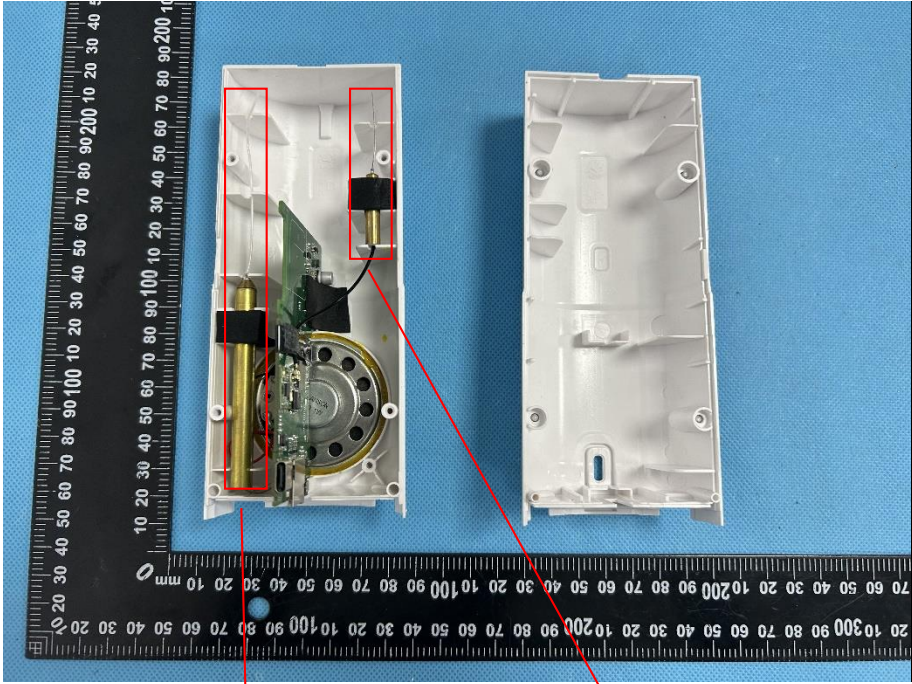
EUT Housing and Board View 1



EUT Housing and Board View 2



<p>Solder Board-Component View 1</p>	 A photograph of a green printed circuit board (PCB) component, likely a Wi-Fi module, placed on a blue textured surface. The component is irregularly shaped with a notch on the right side. It features various electronic components including a large square chip, several smaller chips, and a gold-plated connector on the left side. A black L-shaped ruler is positioned around the component for scale, with markings in millimeters. The ruler shows the component is approximately 100mm wide and 60mm high.
<p>Solder Board-Component View 2</p>	 A photograph of the same green PCB component from a different perspective, showing the reverse side. The component is placed on the same blue textured surface. The reverse side shows a large square chip, various smaller components, and a gold-plated connector on the right side. A black L-shaped ruler is positioned around the component for scale, with markings in millimeters. The ruler shows the component is approximately 100mm wide and 60mm high.

<p>Solder Board-Component View 3</p>	 <p>A photograph of a green printed circuit board (PCB) component, likely a solder board, placed on a blue textured surface. A black ruler with white markings is positioned vertically to the left of the board, showing measurements in millimeters. The board features various electronic components, including a prominent blue integrated circuit (IC) and several smaller components. The board has a complex shape with several cutouts and mounting points.</p>
<p>Antenna View</p>	 <p>A photograph showing the internal antenna components of a device. The device is shown in two parts: the left half is the internal assembly, and the right half is the white plastic housing. A black ruler with white markings is placed vertically to the left of the assembly. Two red boxes highlight specific components: one box is labeled "915MHz Antenna" and points to a cylindrical component on the left side of the PCB; the other box is labeled "WIFI Antenna" and points to a smaller component on the right side of the PCB. The PCB is mounted on a circular metal base.</p>