



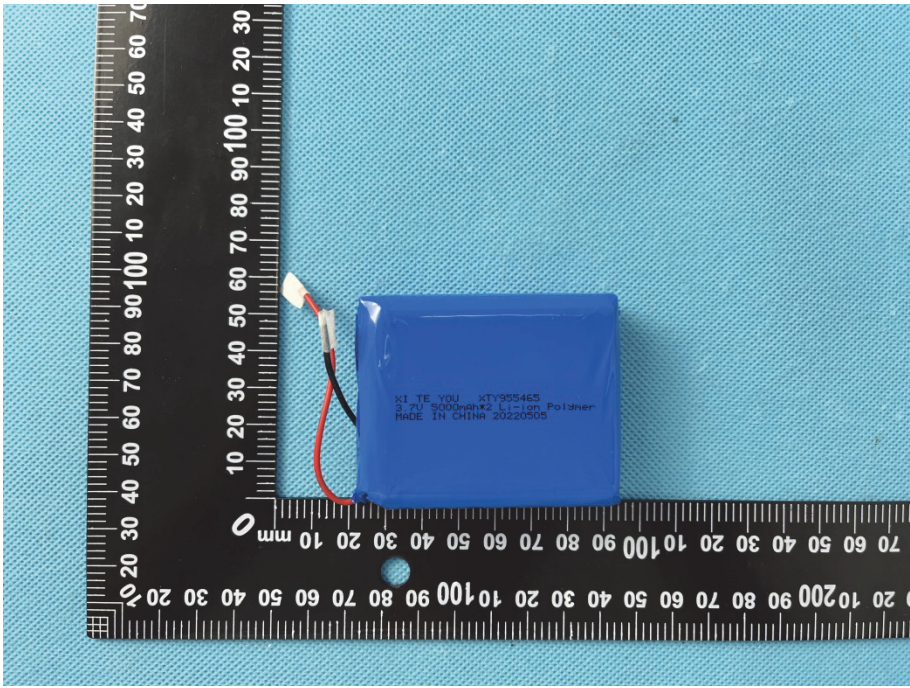
### EXHIBIT 3 - EUT INTERNAL PHOTOGRAPHS

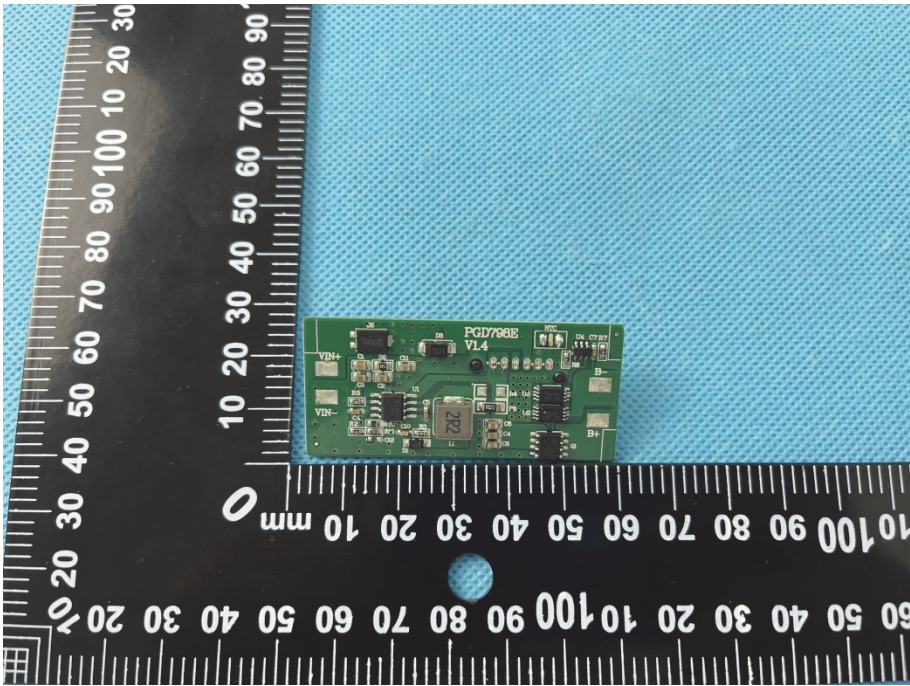
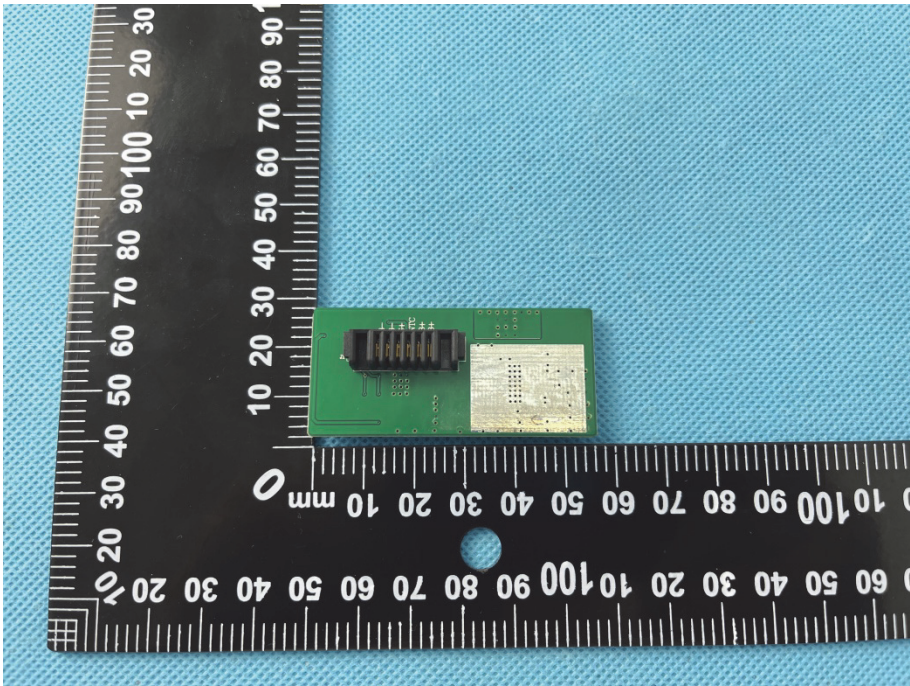
<p><b>EUT Housing and Board View 1</b></p>	
<p><b>EUT Housing and Board View 2</b></p>	

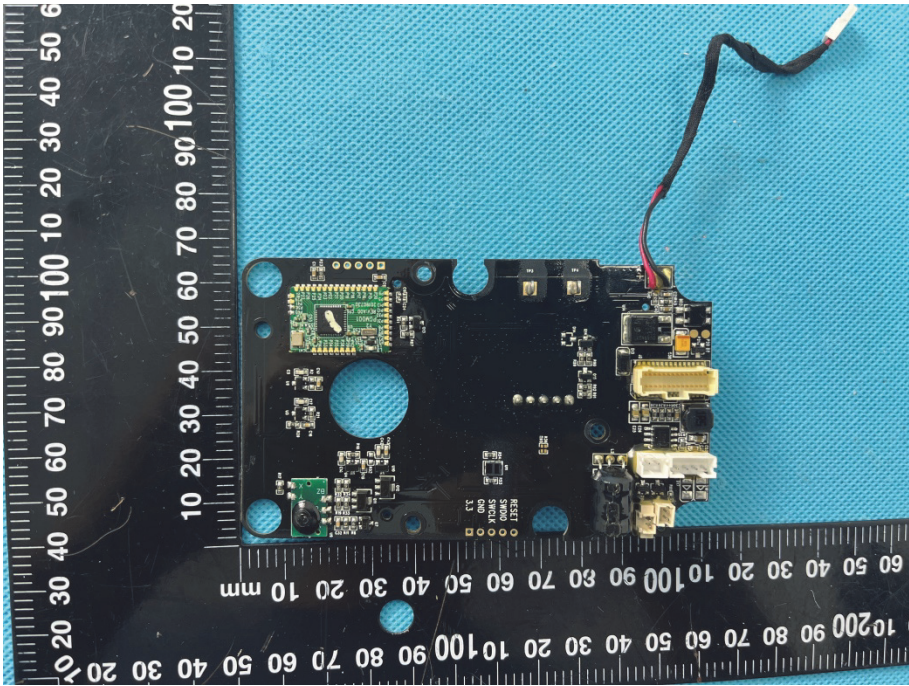
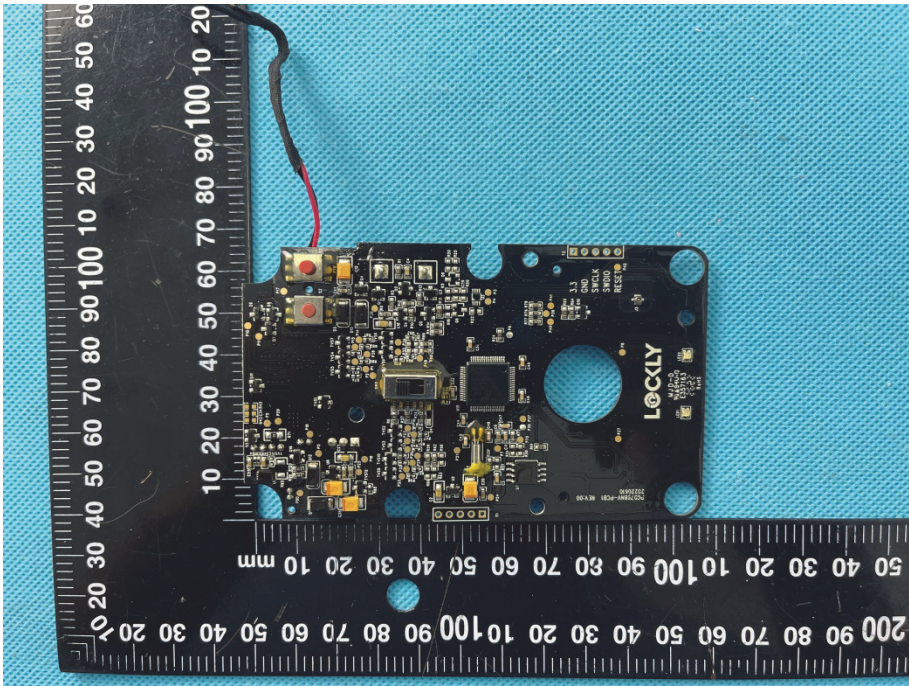
**EUT Housing and Board  
View 3**



**EUT Housing and Board  
View 4**



<p style="text-align: center;"><b>Solder Board-Component View 1</b></p>	 A photograph of a green printed circuit board (PCB) component, labeled 'PGD798B VL4', placed on a blue textured surface. The component is positioned next to a black ruler with white markings. The ruler shows measurements in millimeters, with the component's length being approximately 100 mm. The component features various electronic components, including a large integrated circuit (IC) and several smaller components. The text 'VIN+', 'VIN-', '222', 'PGD798B', 'VL4', 'U4', 'C7987', and 'B1' is visible on the board.
<p style="text-align: center;"><b>Solder Board-Component View 2</b></p>	 A photograph of the same green PCB component from a different perspective, showing the underside. The component is placed on the same blue textured surface next to the same black ruler. The ruler indicates the component's width is approximately 30 mm. The underside of the component shows a large black component, likely a connector or a heat sink, and a gold-colored area, possibly a solder mask or a specific component. The text 'VIN+', 'VIN-', '222', 'PGD798B', 'VL4', 'U4', 'C7987', and 'B1' is visible on the board.

<p style="text-align: center;"><b>Solder Board-Component View 3</b></p>	 A photograph of a black printed circuit board (PCB) with various electronic components. The board is placed on a blue textured surface next to a black ruler with white markings in millimeters. The ruler shows measurements from 0 to 100 mm. The board features a central microcontroller, several integrated circuits, and connectors. A small green component is visible on the left side. A black cable with red and white wires is connected to the board.
<p style="text-align: center;"><b>Solder Board-Component View 4</b></p>	 A photograph of the same black PCB from a different perspective. The board is placed on a blue textured surface next to a black ruler with white markings in millimeters. The ruler shows measurements from 0 to 100 mm. The board features a central microcontroller, several integrated circuits, and connectors. The brand name "LOCKLY" is visible on the board. A black cable with red and white wires is connected to the board.