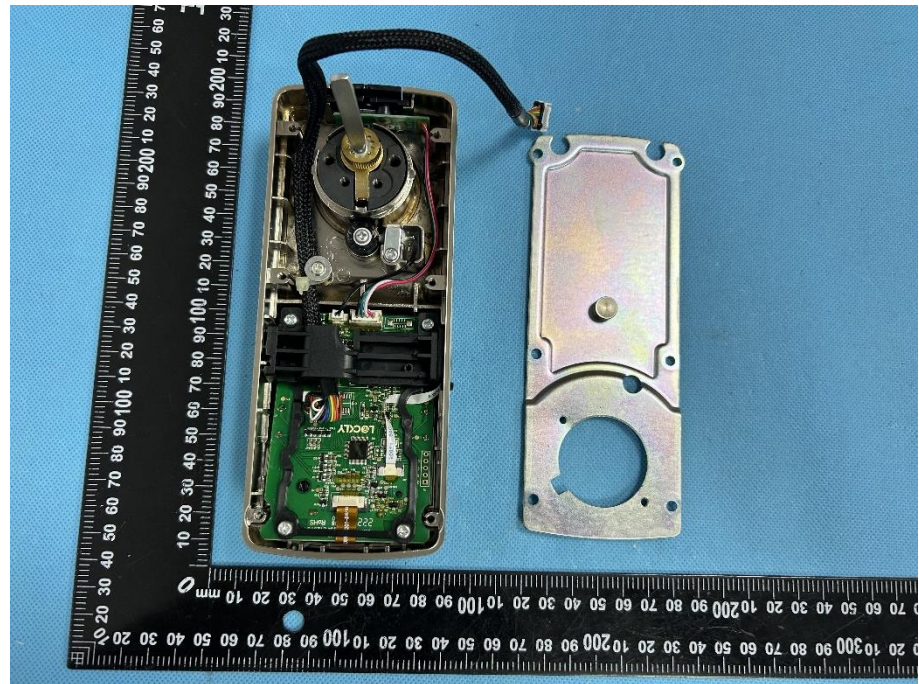


EXHIBIT 3 - EUT INTERNAL PHOTOGRAPHS

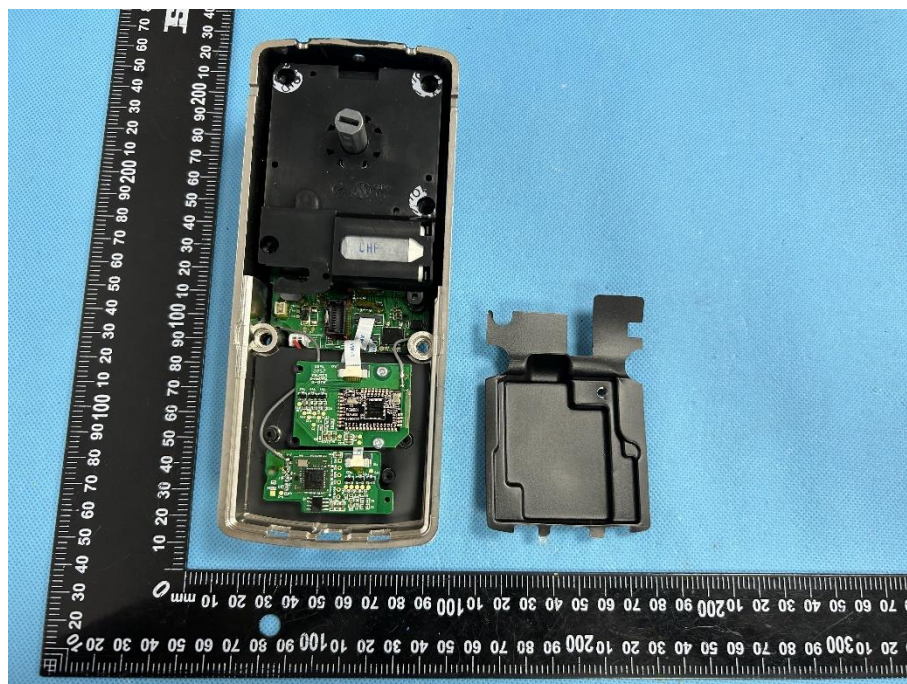
EUT Housing and Board View 1



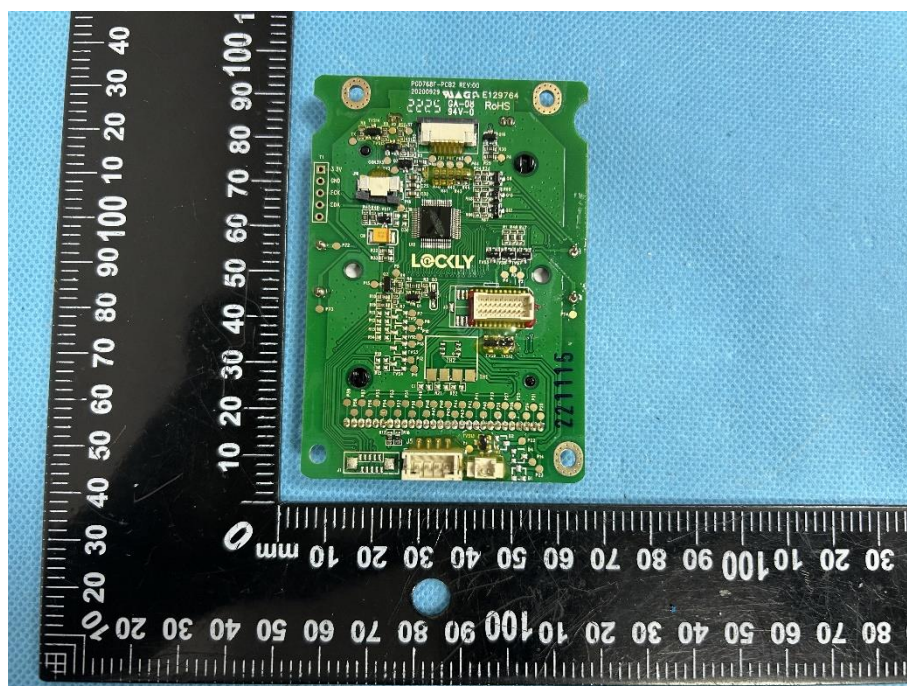
EUT Housing and Board View 2

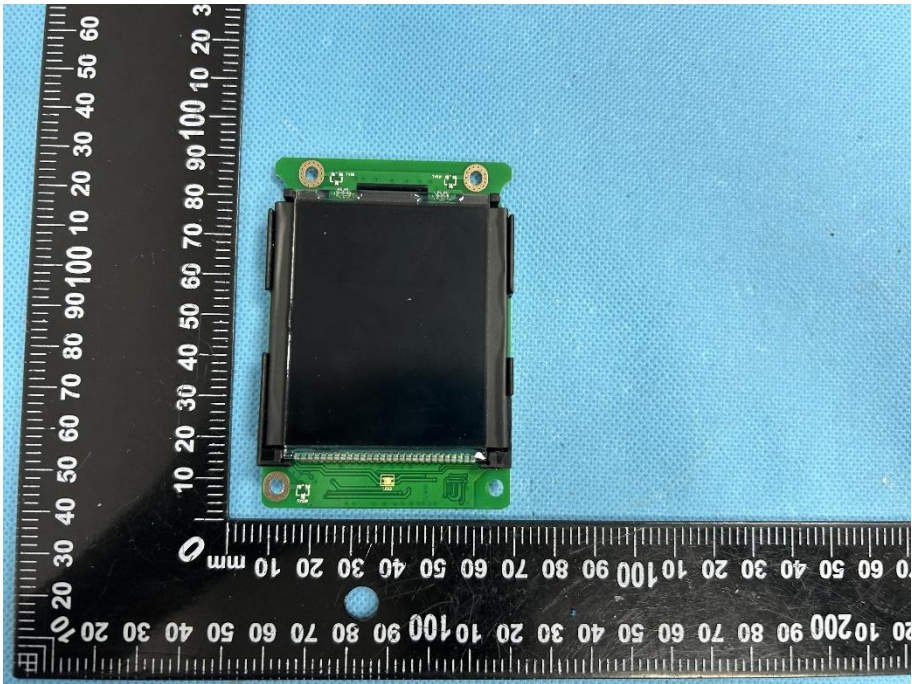
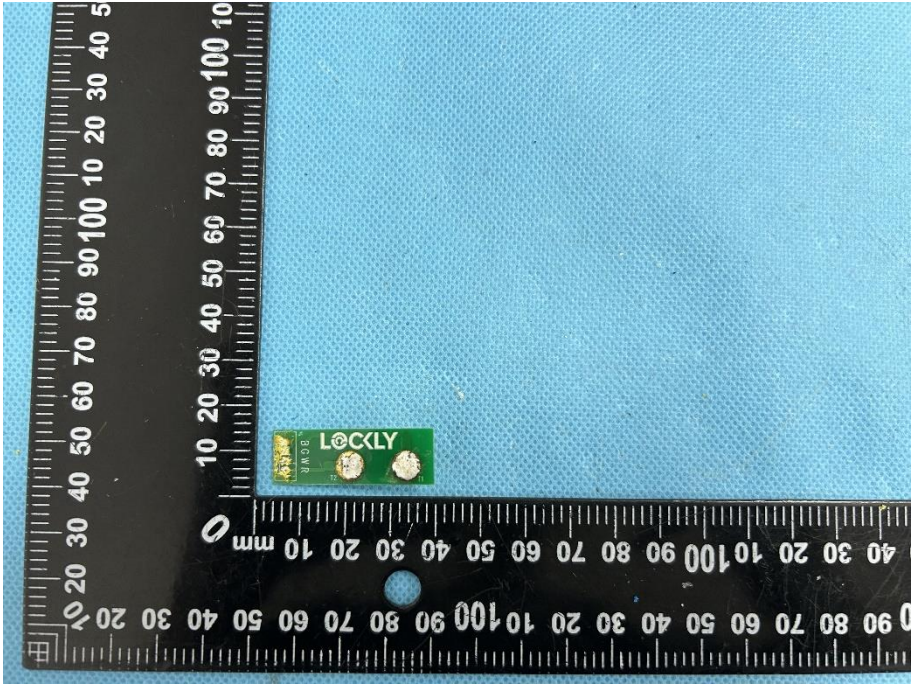


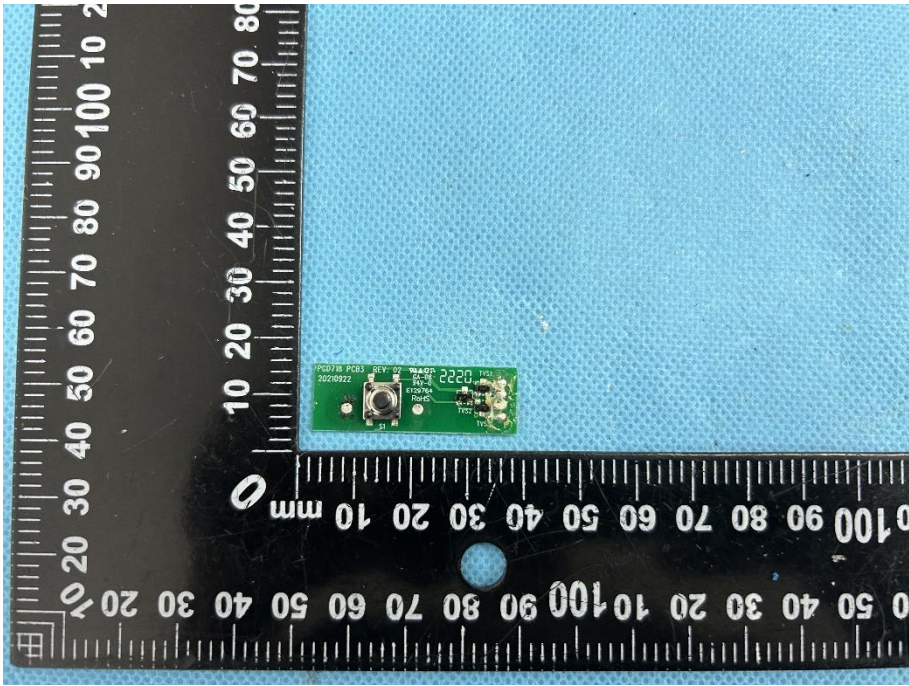

**EUT Housing and
Board View 3**

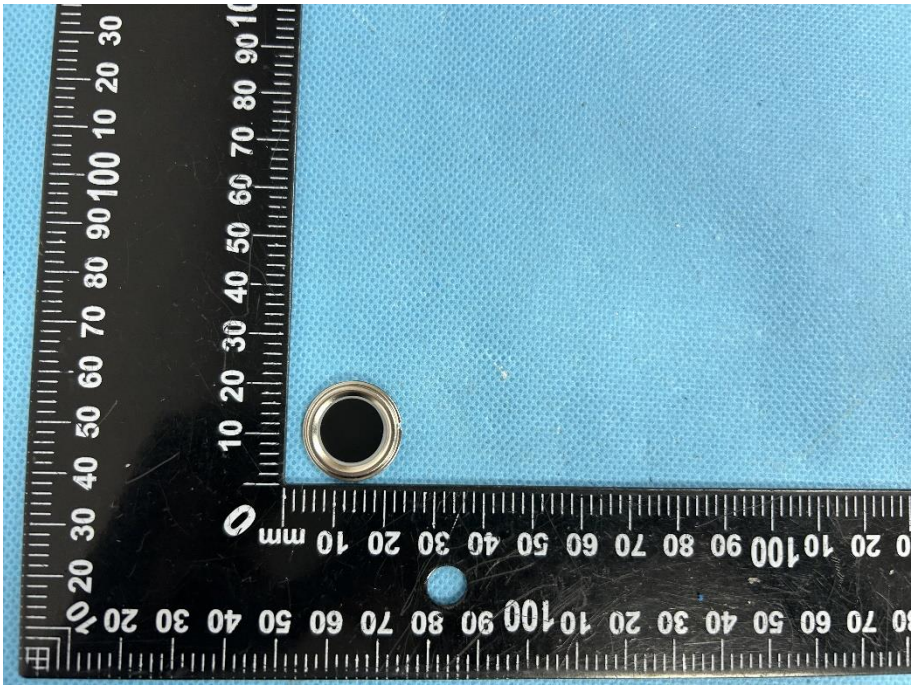
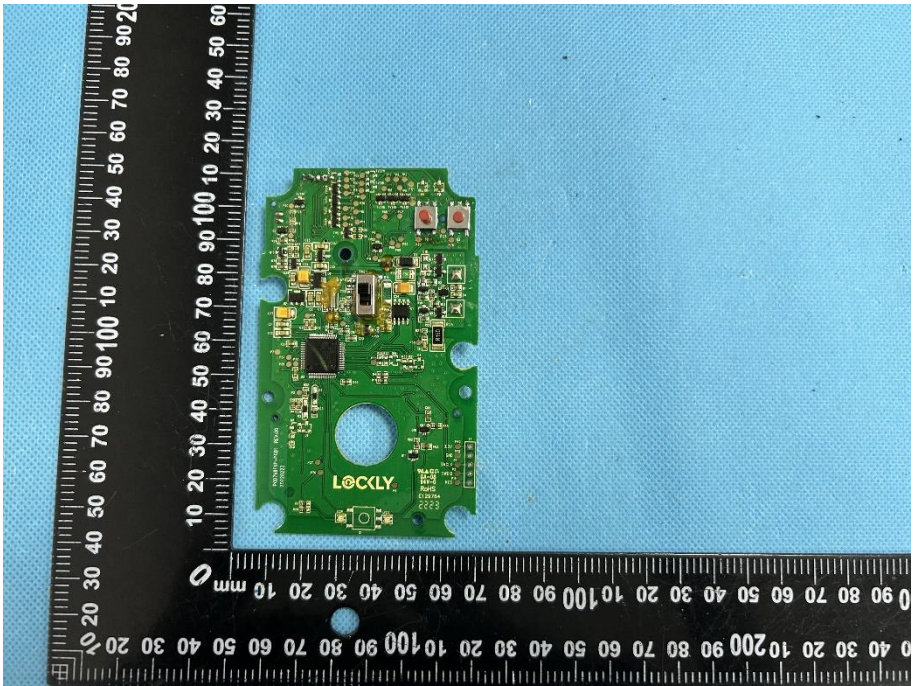


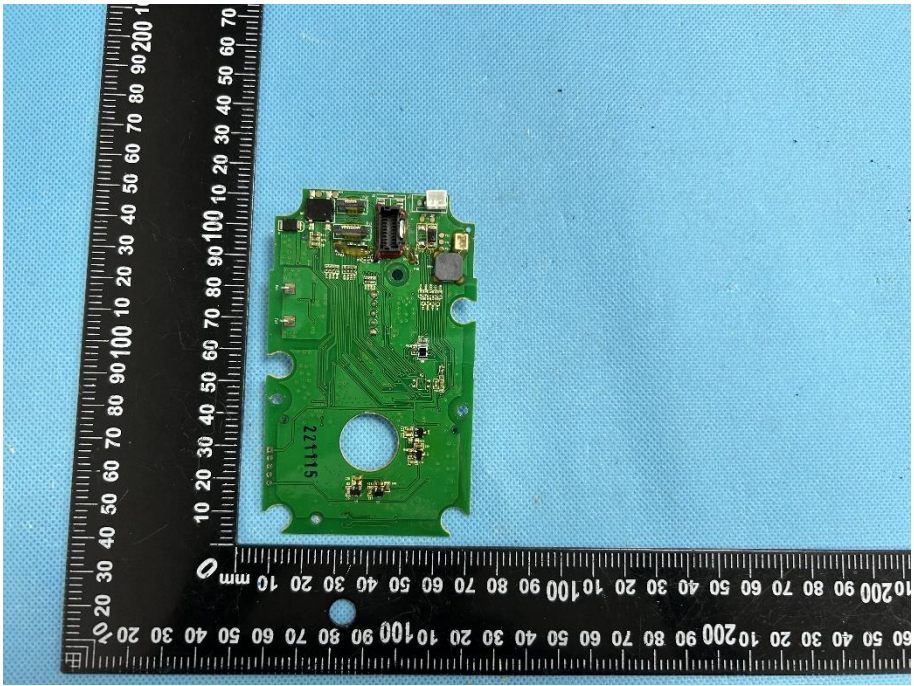
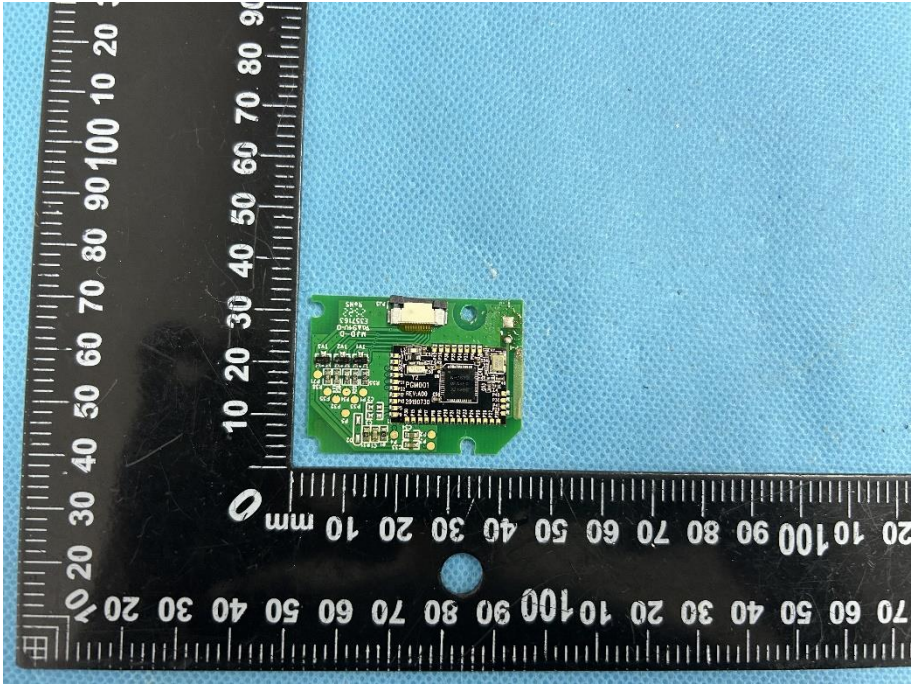
**Solder
Board-Component
View 1**

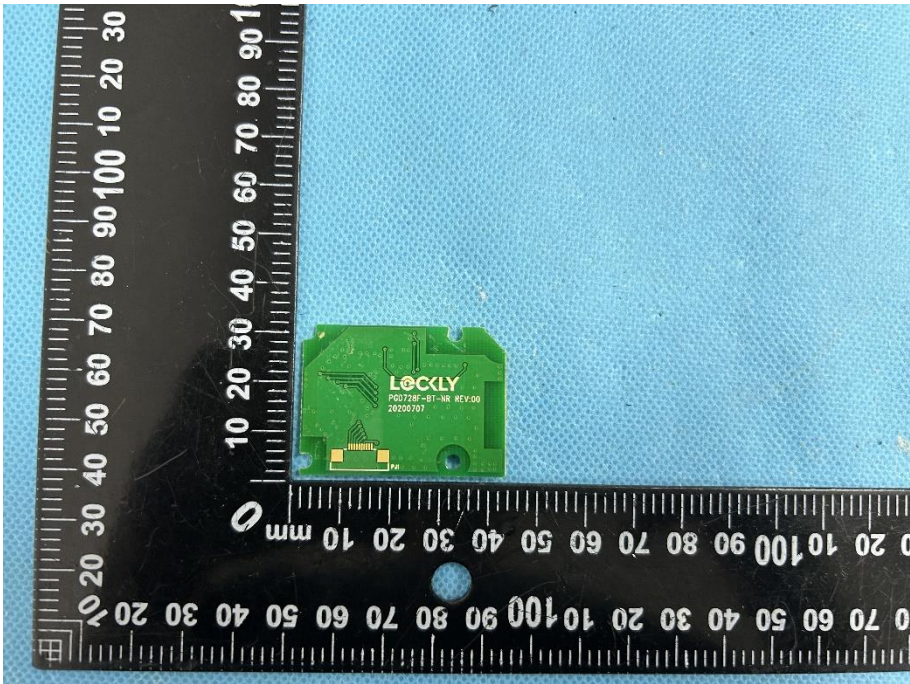
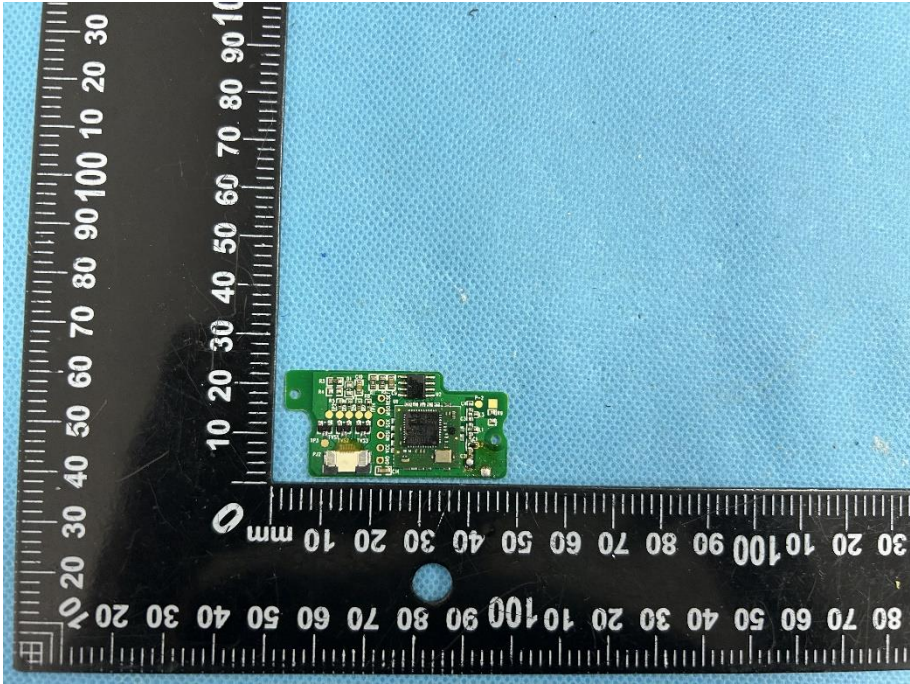


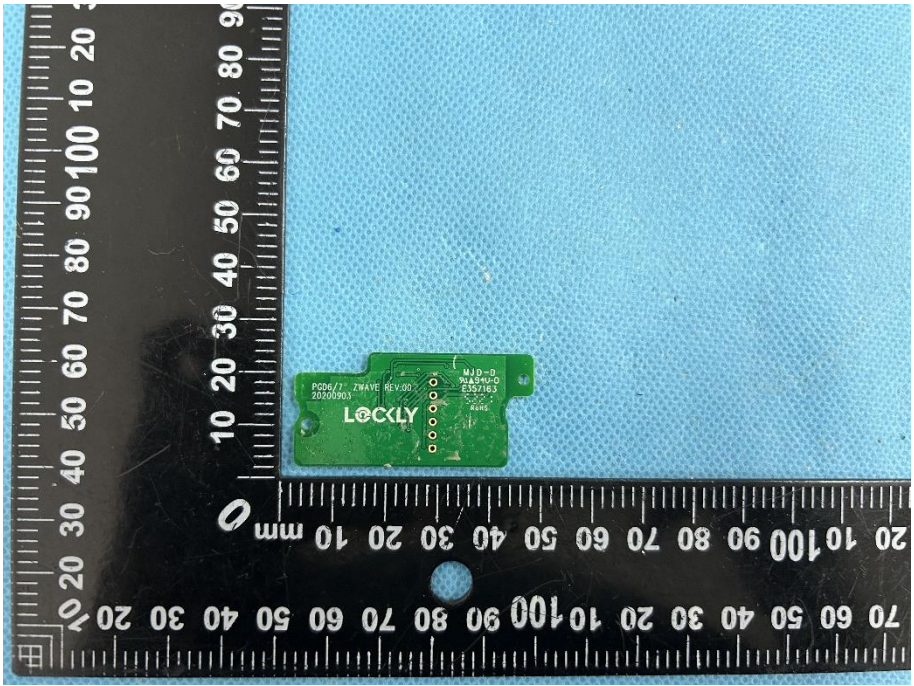

<p>Solder Board-Component View 2</p>	 A photograph showing a rectangular black component with a green PCB on top, mounted on a blue textured surface. The component is positioned next to a black L-shaped ruler with white markings in millimeters. The ruler indicates the component's dimensions are approximately 100mm by 60mm. The green PCB has several gold-colored circular pads and a small white label with the number '100'.
<p>Solder Board-Component View 3</p>	 A photograph showing a small green PCB component with two gold-colored circular pads, mounted on a blue textured surface. The component is positioned next to a black L-shaped ruler with white markings in millimeters. The ruler indicates the component's dimensions are approximately 20mm by 10mm. The green PCB has the word 'LOCKLY' printed on it.

<p>Solder Board-Component View 4</p>	 <p>A rectangular green PCB component is shown against a blue background. A black L-shaped ruler is placed next to it for scale. The ruler has markings in millimeters, with the horizontal scale from 0 to 100 mm and the vertical scale from 0 to 100 mm. The component is positioned near the 10 mm mark on both scales. The component has a central circular feature and several smaller components. Text on the component includes "P20718 PCB3 REV: 02 W4490", "20210922", "02220", "030304", "R0405", "T152", and "S1".</p>
<p>Solder Board-Component View 5</p>	 <p>A circular PCB component is shown against a blue background. A black L-shaped ruler is placed next to it for scale. The ruler has markings in millimeters, with the horizontal scale from 0 to 100 mm and the vertical scale from 0 to 100 mm. The component is positioned near the 10 mm mark on both scales. The component is circular and has a central square feature. Text on the component includes "046-11-01-2" and "10002".</p>

<p>Solder Board-Component View 6</p>	
<p>Solder Board-Component View 7</p>	

<p>Solder Board-Component View 8</p>	 <p>A photograph of a green printed circuit board (PCB) component, labeled '2211115', positioned on a blue textured surface. A black ruler with white markings is placed vertically to the left of the component for scale. The ruler shows measurements in millimeters, with markings every 10 units and sub-markings every 1 unit. The component is rectangular with rounded corners and features various electronic components, including a central chip and several smaller components. The PCB has a large circular cutout in the center.</p>
<p>Solder Board-Component View 9</p>	 <p>A photograph of the same green PCB component, labeled '2211115', from a different perspective. The component is positioned on a blue textured surface. A black ruler with white markings is placed vertically to the left of the component for scale. The ruler shows measurements in millimeters, with markings every 10 units and sub-markings every 1 unit. This view shows the top surface of the component, which is populated with various electronic components, including a large central chip and several smaller components. The PCB has a large circular cutout in the center.</p>

<p>Solder Board-Component View 10</p>	 <p>A photograph of a green printed circuit board (PCB) component, identified as a solder board component in View 10. The component is rectangular and features a central chip with the brand name "LOCKLY" and the model number "PD0728F-BT-NR REV.00" printed on it. The component is placed on a blue textured surface next to a black ruler with white markings. The ruler shows measurements in millimeters, with the component's length being approximately 30 mm and its width approximately 15 mm. The component has several gold-colored pads and a small circular hole on its surface.</p>
<p>Solder Board-Component View 11</p>	 <p>A photograph of the same green PCB component, identified as a solder board component in View 11. This view shows the reverse side of the component, revealing a dense array of components, including a large central chip, various smaller components, and numerous gold-colored pads. The component is placed on the same blue textured surface next to the same black ruler. The ruler shows measurements in millimeters, with the component's length being approximately 30 mm and its width approximately 15 mm.</p>

<p>Solder Board-Component View 12</p>	 <p>A photograph of a small green printed circuit board (PCB) component. The board is rectangular with several circular solder pads and a small integrated circuit. The text 'LOCKLY' is printed on the board. It is placed on a blue textured surface next to a black ruler with white markings in millimeters. The ruler shows measurements from 0 to 100 mm.</p>
<p>Antenna View 1</p>	<p>Zwave Antenna</p>  <p>A photograph of a silver electronic device, possibly a remote control, with its battery cover removed. The device is placed on a blue textured surface next to a black ruler with white markings in millimeters. A red box highlights a small component on the device's internal board, which is labeled 'Zwave Antenna' with a red arrow. The ruler shows measurements from 0 to 100 mm.</p>

Antenna View 2

