
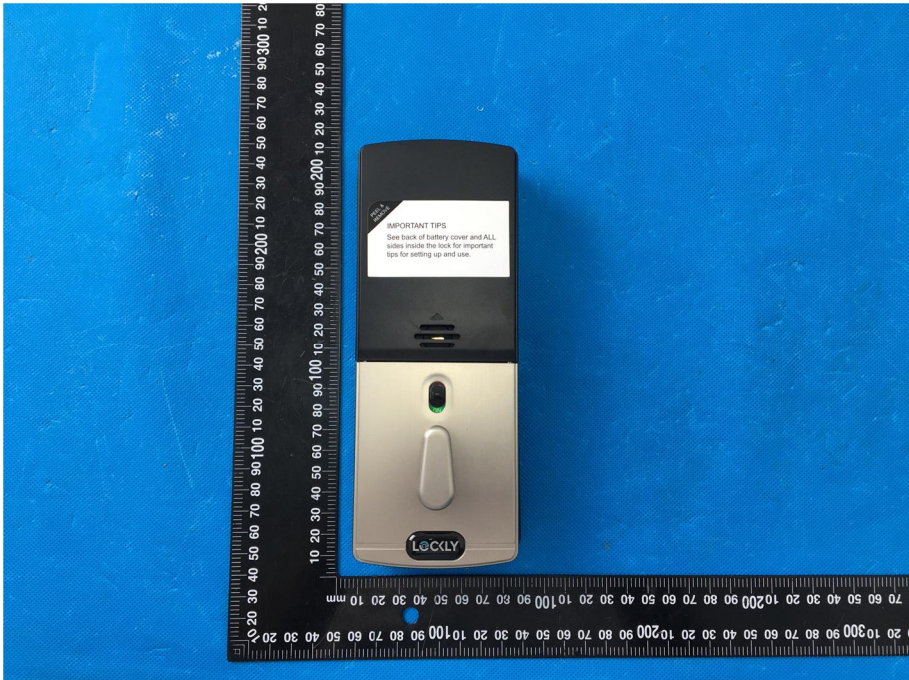


EXHIBIT 2 - EUT EXTERNAL PHOTOGRAPHS

<p>EUT View 1</p>	 <p>A photograph showing the external view of the EUT device and its keys. The device is silver and black, with a screen and a keypad. A ruler is placed vertically to the left of the device for scale. The keys are silver and black. A small white label on the device reads: "IMPORTANT TIPS: See back of battery cover and ALL sides inside the lock for important tips for setting up and use."</p>
<p>EUT View 2</p>	 <p>A close-up photograph of the EUT device. A ruler is placed vertically to the left of the device for scale. The device is silver and black, with a screen and a keypad. A small white label on the device reads: "IMPORTANT TIPS: See back of battery cover and ALL sides inside the lock for important tips for setting up and use."</p>

EUT View 3



EUT View 4



EUT View 5



EUT View 6




EUT View 7

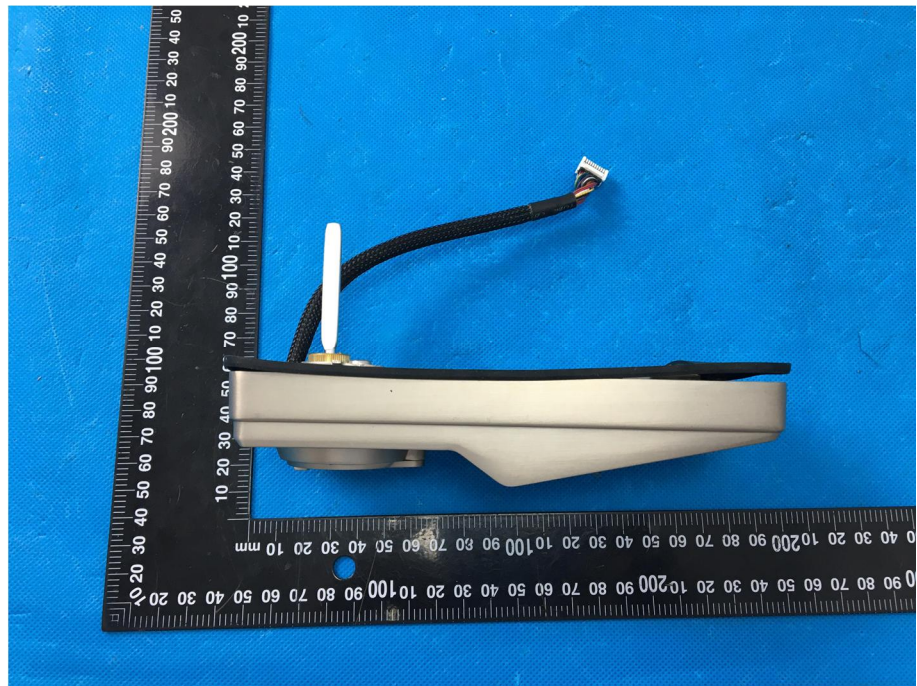


EUT View 8

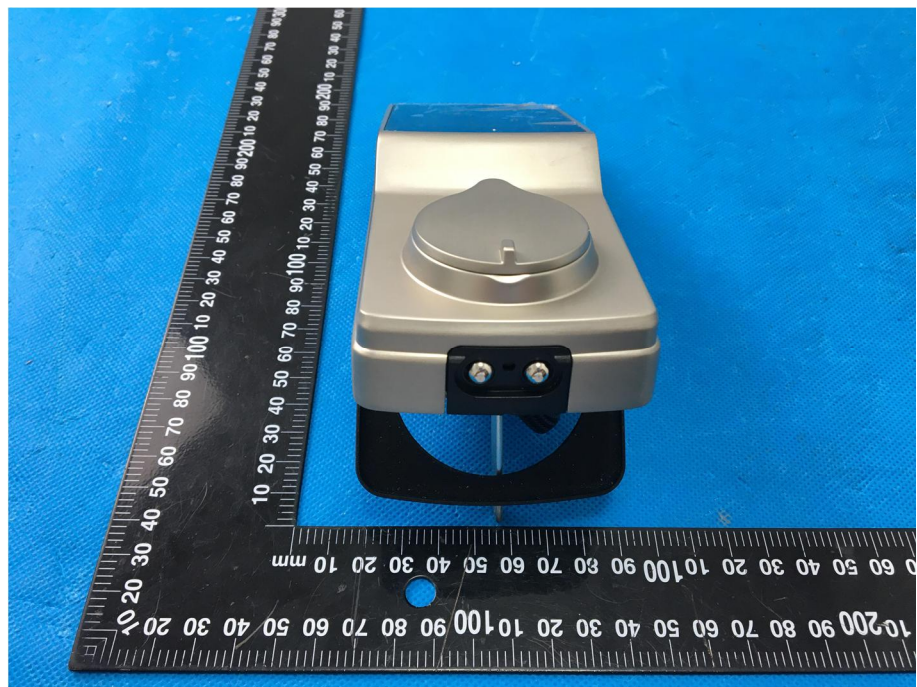


<p>EUT View 9</p>	 A photograph of a white electronic device component, likely a camera lens or sensor, positioned horizontally. The device has a circular lens in the center and a cable extending from the right side. It is placed on a blue background with a black ruler for scale. The ruler shows measurements in millimeters and centimeters.
<p>EUT View 10</p>	 A photograph of the back of the electronic device component, showing internal components and a cable. The device is black and has a circular opening on the right side. It is placed on a blue background with a black ruler for scale. The ruler shows measurements in millimeters and centimeters.

EUT View 11



EUT View 12



EUT View 13

