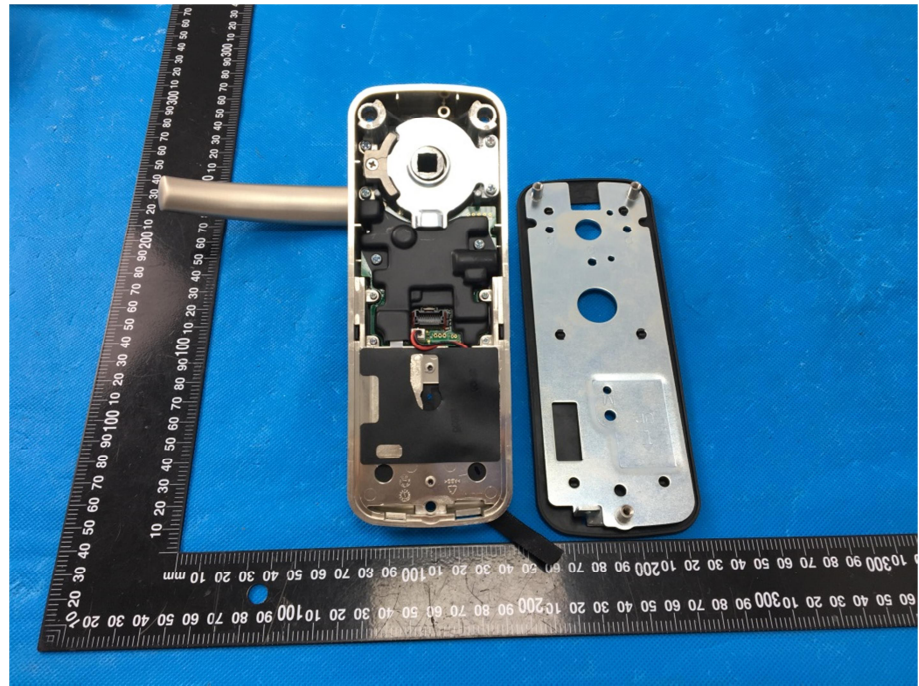


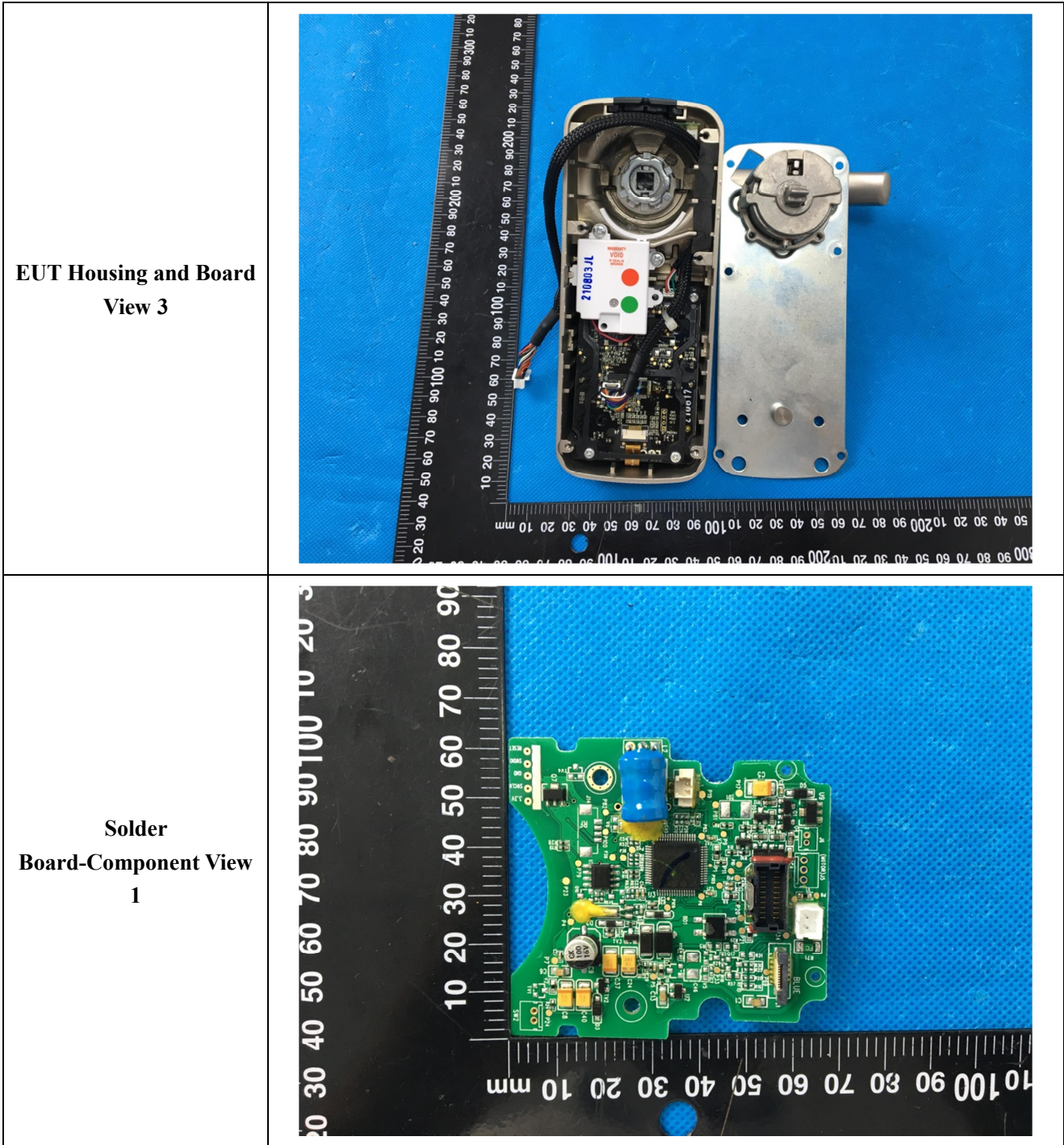
### EXHIBIT 3 - EUT INTERNAL PHOTOGRAPHS

**EUT Housing and Board  
View 1**

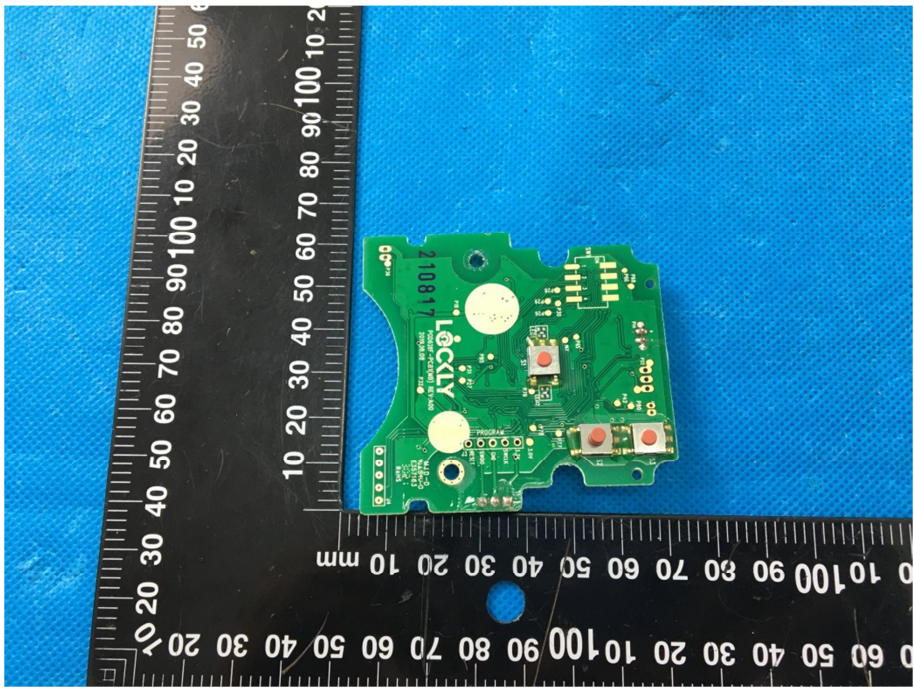



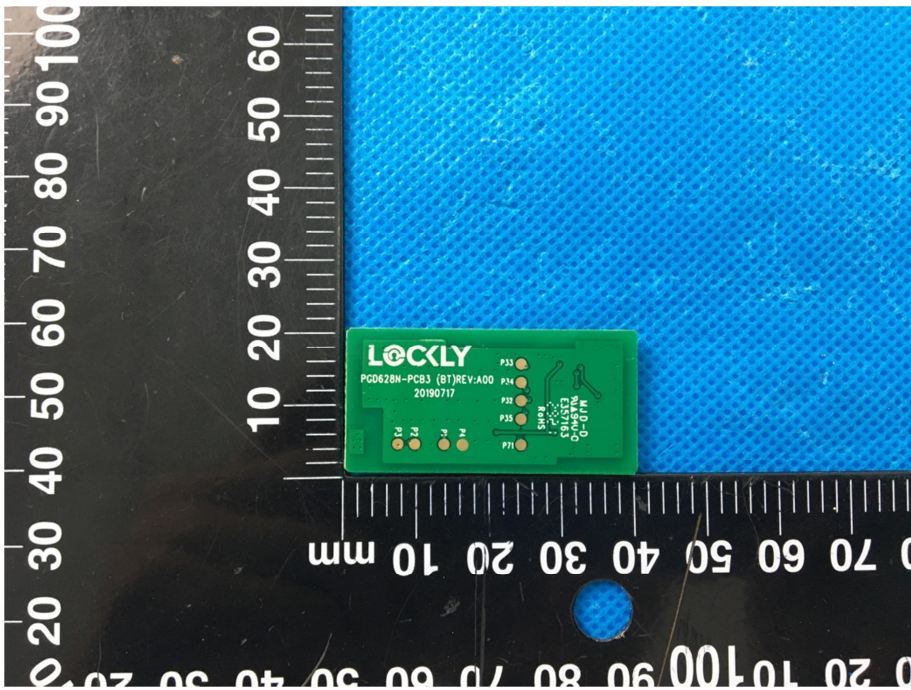
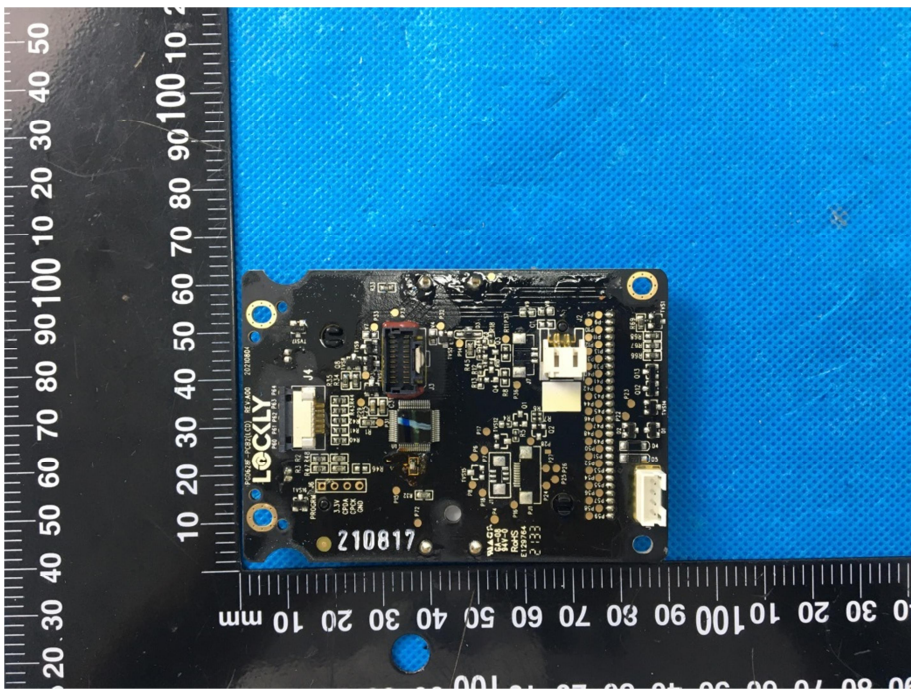
**EUT Housing and Board  
View 2**



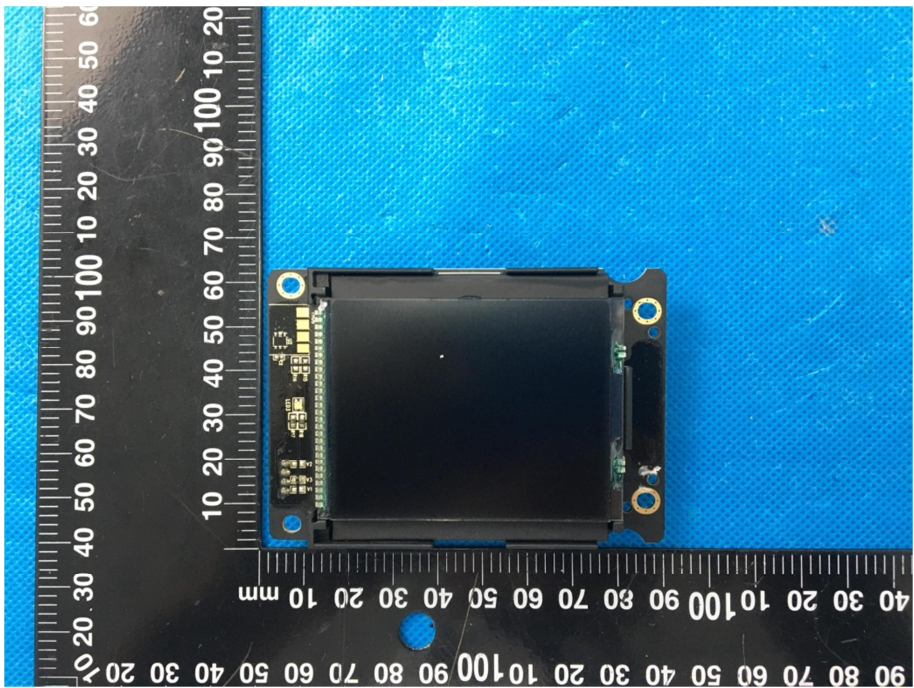
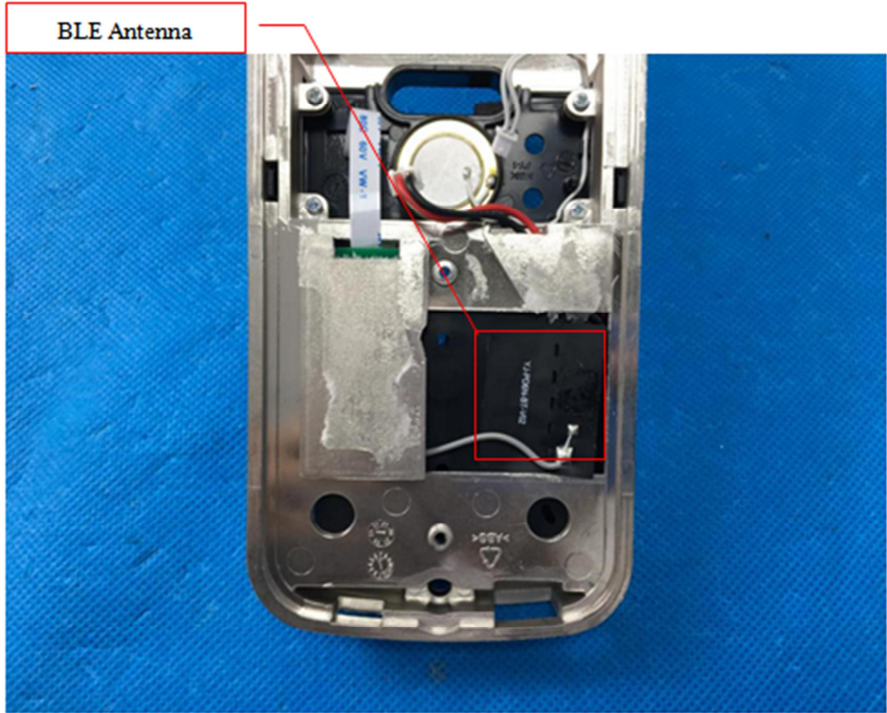




<p style="text-align: center;"><b>Solder Board-Component View 2</b></p>	 A photograph of a green printed circuit board (PCB) component, labeled '2108' and 'L6001', placed on a blue textured surface. A black ruler with white markings is positioned vertically to the left of the component, showing measurements in millimeters. The component features several surface-mounted components, including a large white circular component and several smaller components with red markings.
<p style="text-align: center;"><b>Solder Board-Component View 3</b></p>	 A photograph of a green printed circuit board (PCB) component, labeled '2108' and 'L6001', placed on a blue textured surface. A black ruler with white markings is positioned vertically to the left of the component, showing measurements in millimeters. The component features several surface-mounted components, including a large white circular component and several smaller components with red markings.

<p style="text-align: center;"><b>Solder Board-Component View</b> 4</p>	 <p>A photograph of a green solder board component. The board is rectangular and has several gold-colored pads labeled P71, P72, P73, P74, P75, P76, and P77. It also features a small diagram of a component and the text 'SHOW LOGIC 0-10V 0-0.1M'. The board is placed on a black surface with a white ruler showing millimeter markings. The ruler is oriented vertically on the left and horizontally at the bottom. The background is a blue textured surface.</p>
<p style="text-align: center;"><b>Solder Board-Component View</b> 5</p>	 <p>A photograph of a black PCB component. The board is rectangular and has various components, including a microcontroller, a USB port, and a connector. The board is labeled 'LOCKLY' and '210817'. It is placed on a black surface with a white ruler showing millimeter markings. The ruler is oriented vertically on the left and horizontally at the bottom. The background is a blue textured surface.</p>



<p style="text-align: center;"><b>Solder Board-Component View 6</b></p>	 A photograph of a black printed circuit board (PCB) component, likely a Bluetooth Low Energy (BLE) antenna, resting on a blue textured surface. The component is rectangular with a central black area and several gold-colored circular pads at the corners. A black ruler with white markings is placed vertically to the left and horizontally below the component for scale. The ruler shows measurements in millimeters, with the vertical scale ranging from 0 to 100 mm and the horizontal scale from 0 to 100 mm.
<p style="text-align: center;"><b>Antenna View</b></p>	 A photograph showing the internal components of a device, viewed from the back. The device's metal casing is open, revealing various internal parts including a battery, a camera lens, and a printed circuit board (PCB). A red box highlights a specific component on the PCB, which is identified as the BLE Antenna. A red line points from the text label "BLE Antenna" in the top left corner of the image to the highlighted component. The background is a blue textured surface.