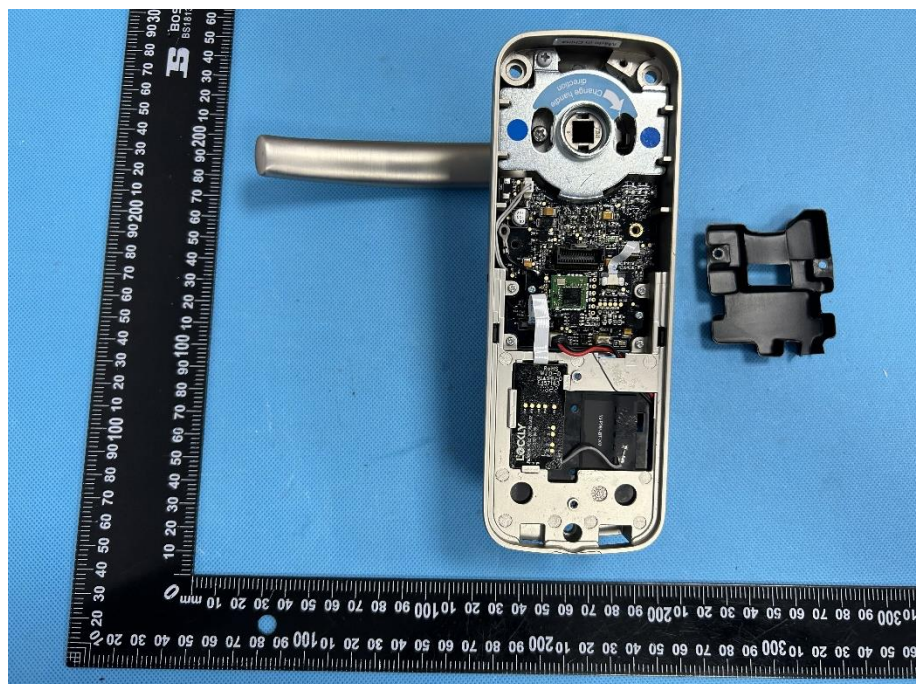


EXHIBIT 3 - EUT INTERNAL PHOTOGRAPHS

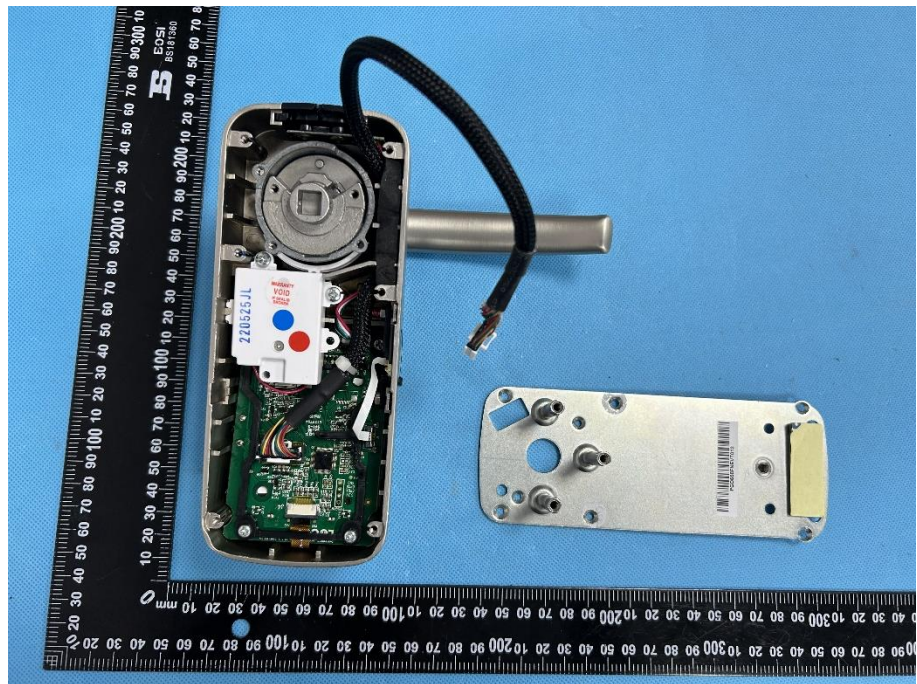
EUT Housing and Board View 1



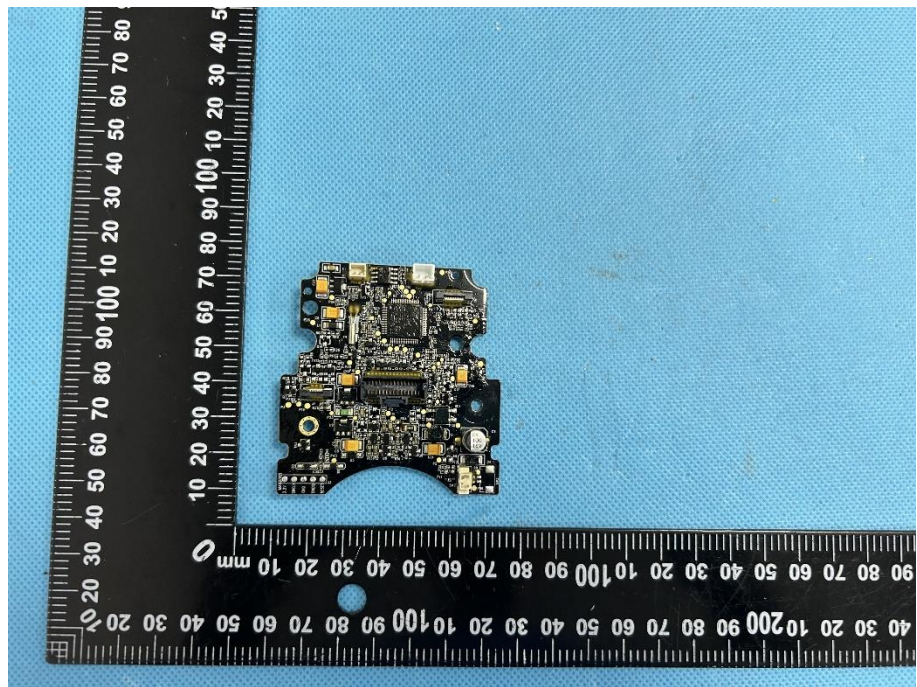
EUT Housing and Board View 2

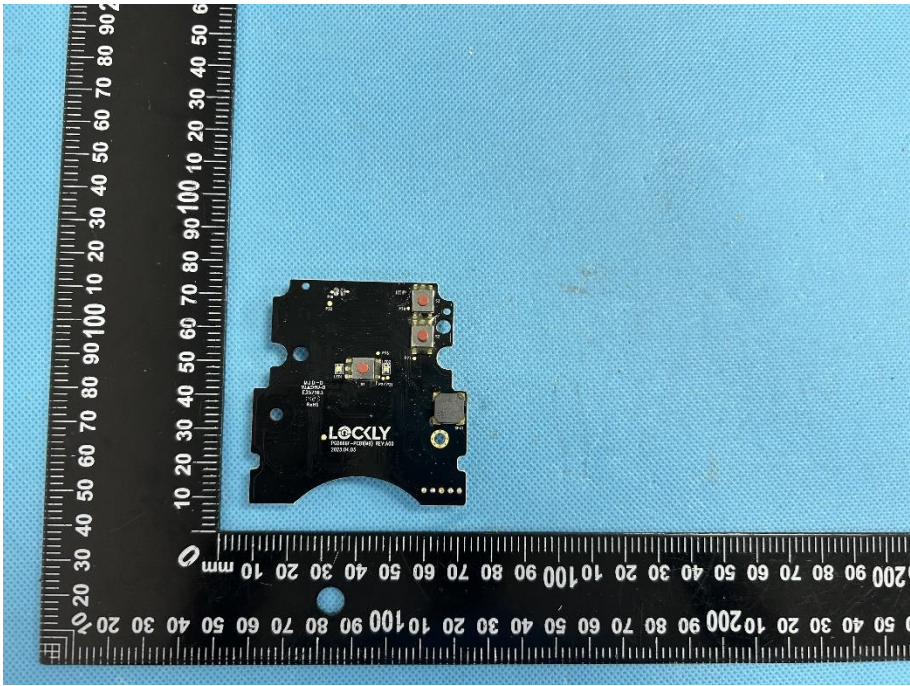
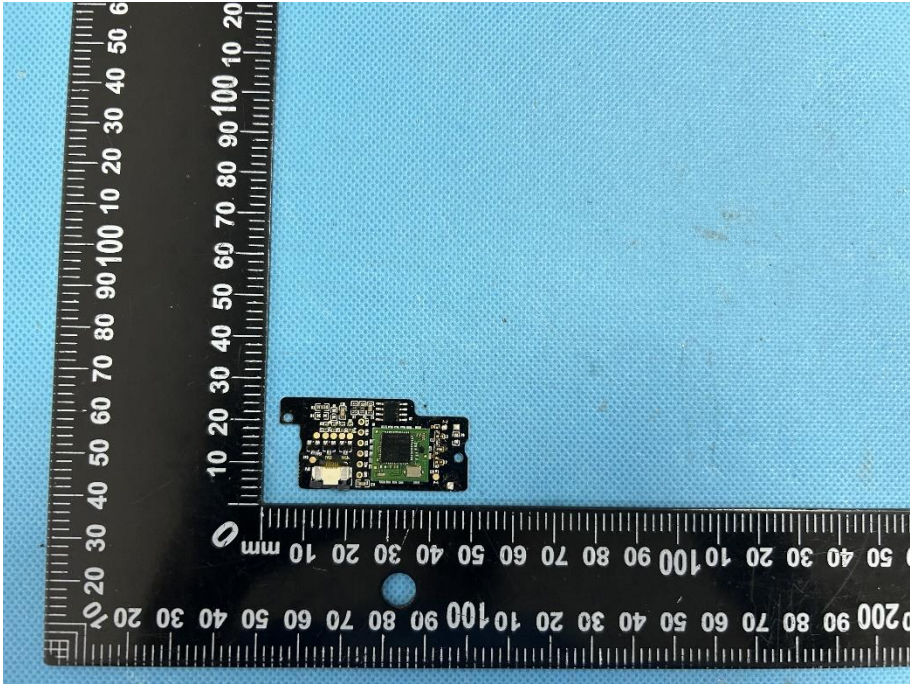


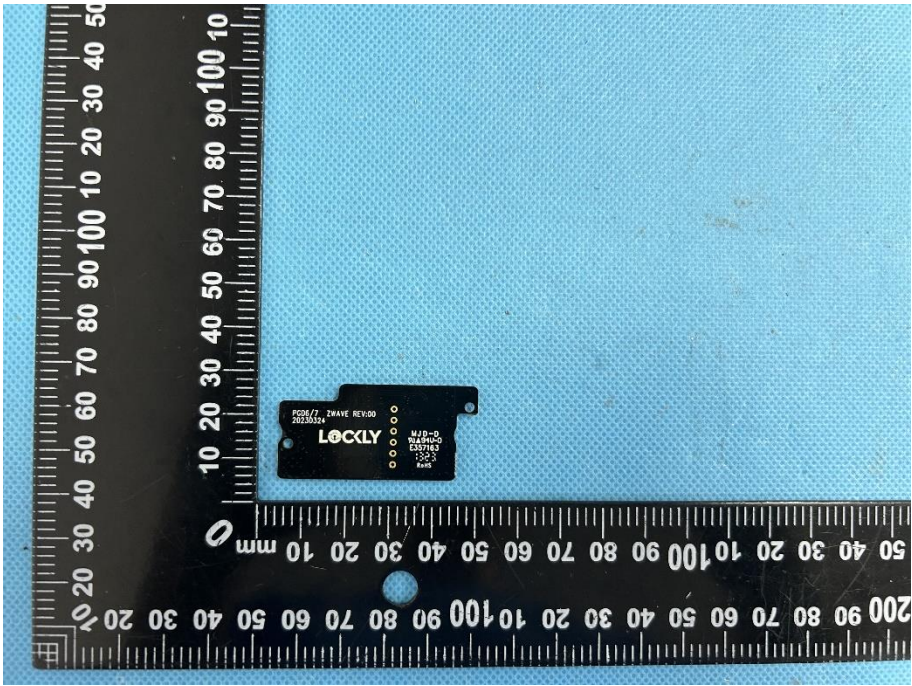
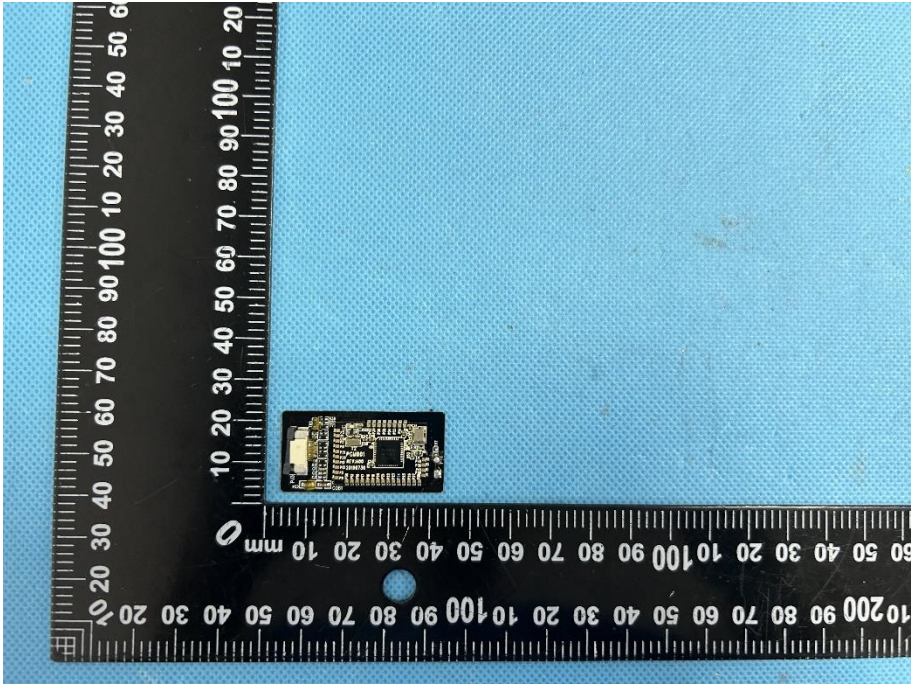
**EUT Housing and
Board View 3**

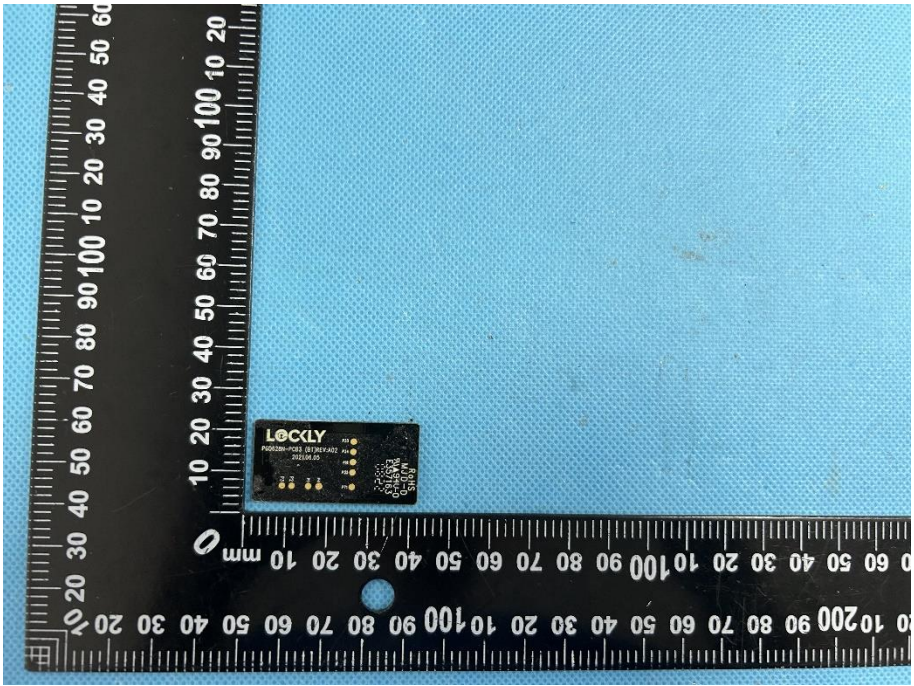
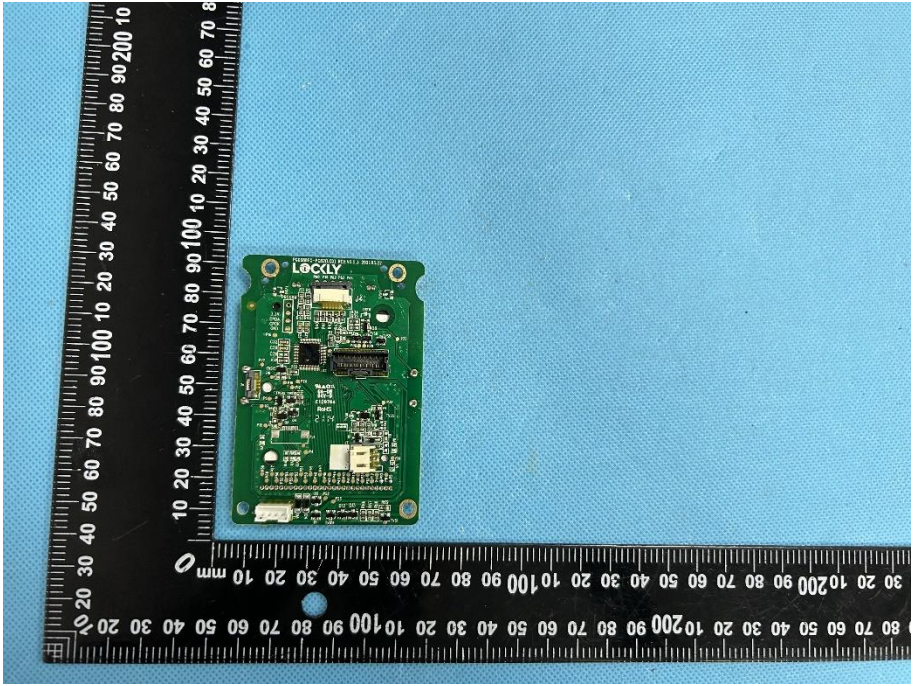


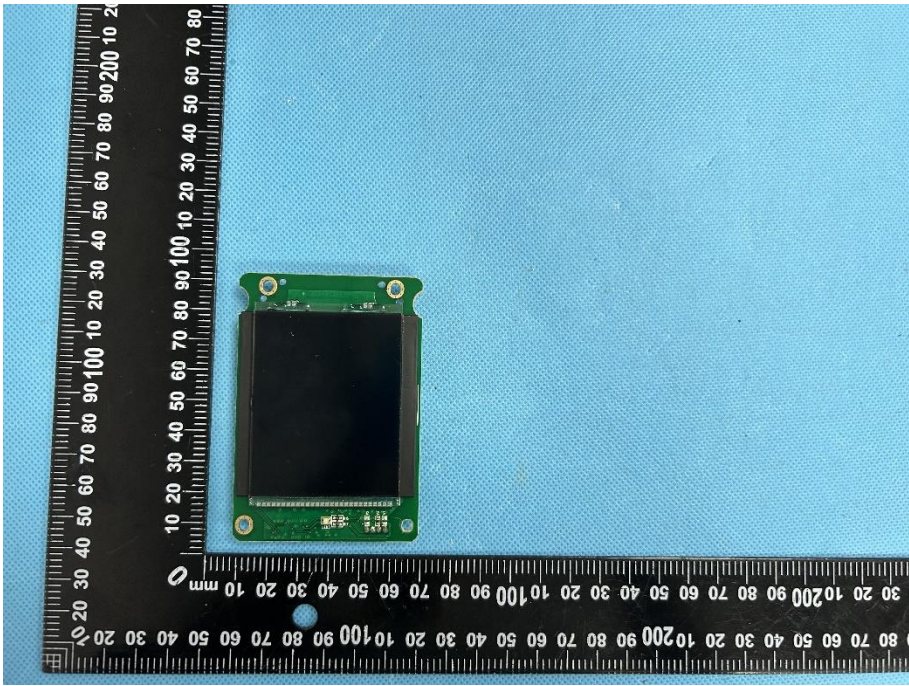
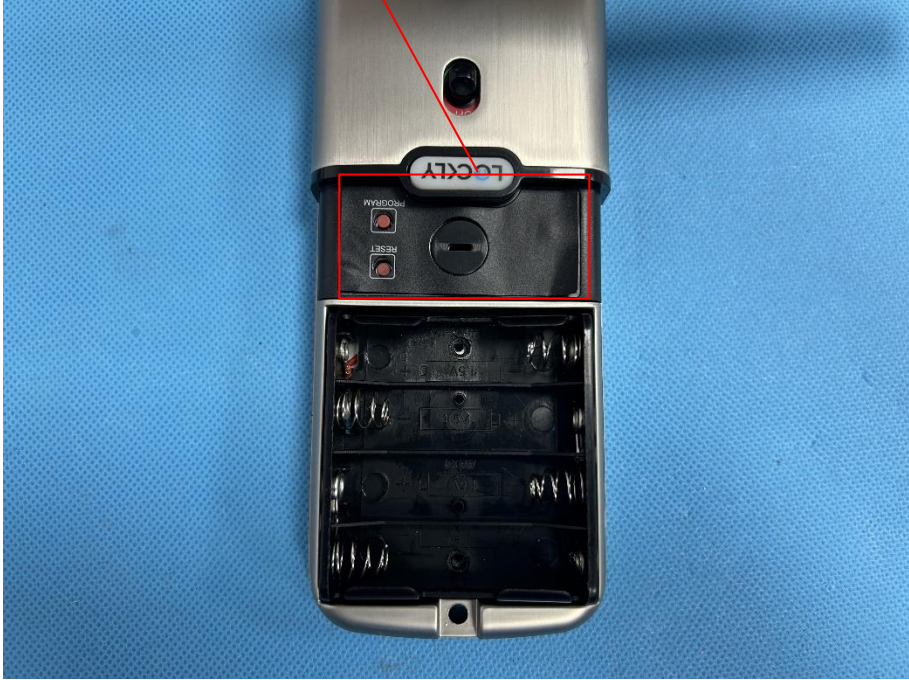
**Solder
Board-Component
View 1**



<p>Solder Board-Component View 2</p>	 <p>A photograph of a black solder board component, labeled 'LOCKLY', placed on a blue textured surface. A black L-shaped ruler is positioned to the left and bottom of the component for scale. The ruler shows measurements in millimeters, with the vertical scale on the left ranging from 0 to 90 mm and the horizontal scale at the bottom ranging from 0 to 200 mm. The component is a small, irregularly shaped board with various electronic components and a central chip.</p>
<p>Solder Board-Component View 3</p>	 <p>A photograph of the same solder board component from a different perspective, showing the underside or a different side. It is placed on the same blue textured surface with the same black L-shaped ruler for scale. The ruler's vertical scale on the left ranges from 0 to 50 mm, and the horizontal scale at the bottom ranges from 0 to 200 mm. This view shows the component's profile and the arrangement of components on its surface.</p>

<p>Solder Board-Component View 4</p>	 <p>A photograph of a small, black, rectangular solder board component. The component is positioned on a blue textured surface. A black L-shaped ruler is placed next to it for scale, with markings in millimeters. The component has several small circular solder points and a central area with some text. The text on the component includes "PCB# 7 ZHAYE REV:00", "LOCKLY", "M.F.B-D", "WALTEK", "S23715", "S23", and "MFB".</p>
<p>Solder Board-Component View 5</p>	 <p>A photograph of the same solder board component from a different perspective. The component is positioned on a blue textured surface. A black L-shaped ruler is placed next to it for scale, with markings in millimeters. The component shows a different side with various components and markings, including "PCB# 7 ZHAYE REV:00", "LOCKLY", "M.F.B-D", "WALTEK", "S23715", "S23", and "MFB".</p>

<p>Solder Board-Component View 6</p>	
<p>Solder Board-Component View 7</p>	

<p>Solder Board-Component View 8</p>	 <p>A photograph of a green printed circuit board (PCB) component, likely a solder board, placed on a blue textured surface. The component is rectangular with a black square in the center. It is positioned next to a black ruler with white markings in millimeters. The ruler is oriented vertically on the left and horizontally at the bottom. The component's width is approximately 20 mm and its height is approximately 40 mm.</p>
<p>Antenna View 1</p>	<p>Zwave Antenna</p>  <p>A photograph of a silver and black electronic device, possibly a remote control or a small handheld device, with its battery cover removed. The device is oriented vertically. A red box highlights a small, circular component on the top surface, which is labeled "Zwave Antenna". Below the antenna, there are two red buttons labeled "PROGRAM" and "RESET", and a circular slot. The battery compartment is visible at the bottom, showing several AA batteries.</p>

Antenna View 2

