



### EXHIBIT 3 - EUT INTERNAL PHOTOGRAPHS

The fingerprint scanner is on the handle

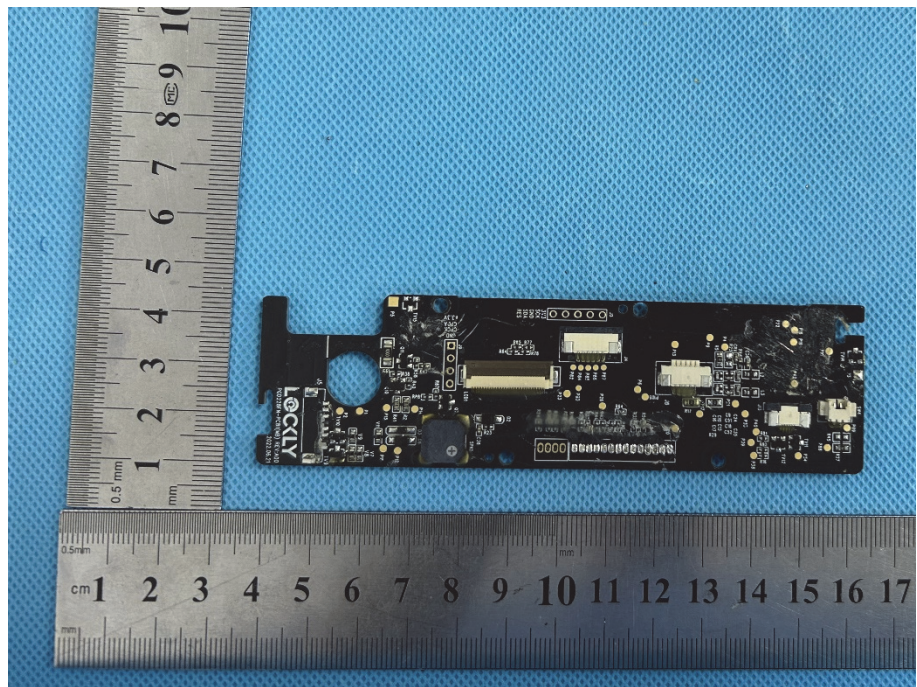
<p><b>EUT Housing and Board View 1</b></p>	 A photograph showing the internal components of the EUT housing. On the left is a black plastic housing with a fingerprint scanner lens and a battery. On the right is a metal printed circuit board (PCB) with various electronic components and a connector. A ruler is placed vertically on the left and horizontally at the bottom for scale.
<p><b>EUT Housing and Board View 2</b></p>	 A photograph showing the EUT housing and board from a different perspective. The black plastic housing is on the left, and a metal PCB is on the right. A ruler is placed vertically on the left and horizontally at the bottom for scale.



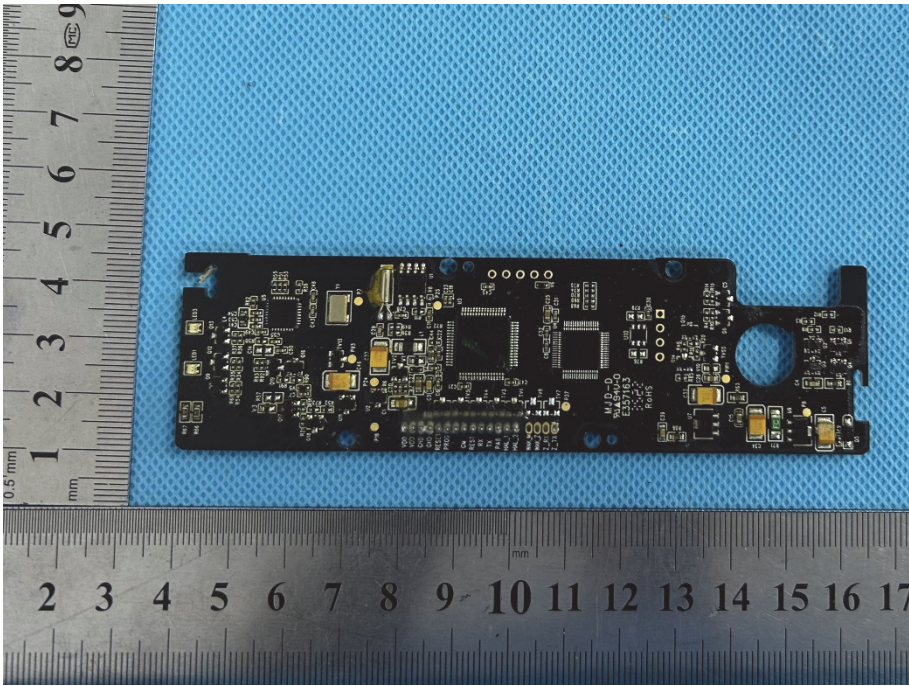
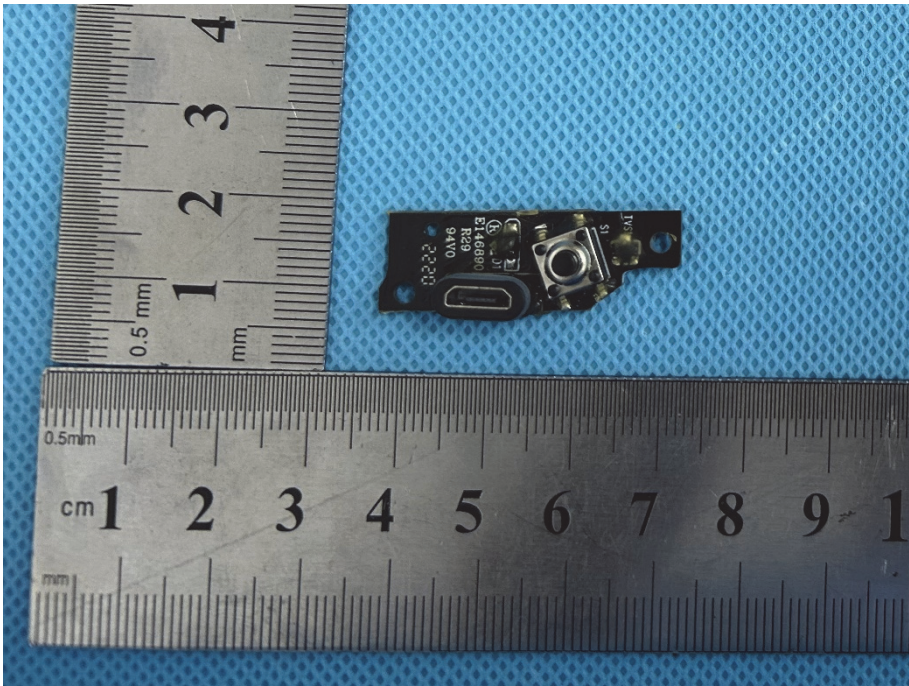
**EUT Housing and  
Board View 3**



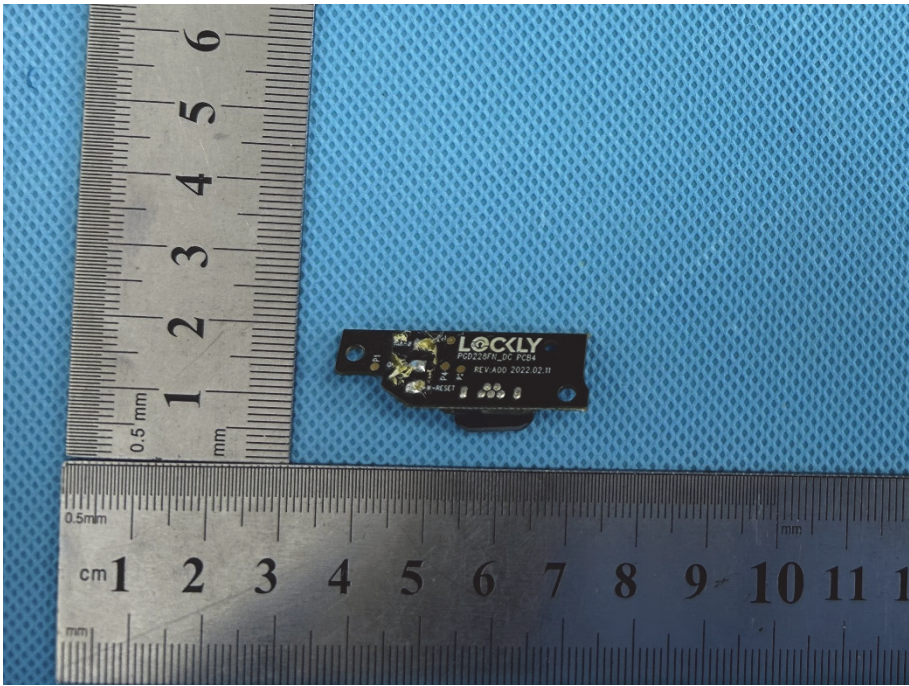
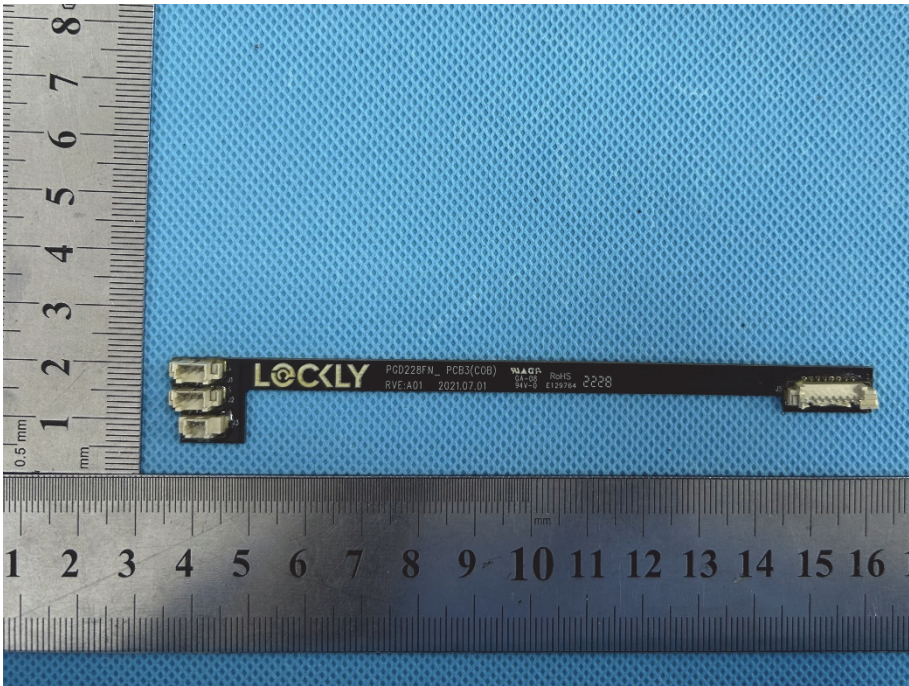
**Solder  
Board-Component  
View 1**





<p><b>Solder Board-Component View 2</b></p>	 <p>A photograph of a rectangular solder board component with a complex circuit layout. The board is dark green and populated with various electronic components including integrated circuits, resistors, and capacitors. A circular cutout is visible on the right side. The component is placed on a blue textured surface. A ruler is positioned vertically on the left and horizontally at the bottom for scale. The vertical ruler shows markings from 1 to 9 mm, and the horizontal ruler shows markings from 2 to 17 mm.</p>
<p><b>Solder Board-Component View 3</b></p>	 <p>A close-up photograph of a solder board component, likely a camera module, showing a lens and sensor area. The component is dark green with a circular lens and a sensor. It is placed on a blue textured surface. A ruler is positioned vertically on the left and horizontally at the bottom for scale. The vertical ruler shows markings from 1 to 4 mm, and the horizontal ruler shows markings from 1 to 10 cm.</p>



<p><b>Solder Board-Component View 4</b></p>	 <p>A photograph of a small, dark-colored solder board component. The component is rectangular with several small components and solder joints on its surface. It is placed on a blue textured background. A metal ruler is positioned vertically to the left of the component, showing markings from 1 to 6 mm. A horizontal ruler is placed below the component, showing markings from 1 to 11 cm. The component has the text "LOCKLY" and "REV.A00 2022.02.01" printed on it.</p>
<p><b>Solder Board-Component View 5</b></p>	 <p>A photograph of a long, thin solder board component. The component is dark-colored with a long, narrow shape. It has two connectors on the left side and a connector on the right side. It is placed on a blue textured background. A metal ruler is positioned vertically to the left of the component, showing markings from 1 to 8 mm. A horizontal ruler is placed below the component, showing markings from 1 to 16 cm. The component has the text "LOCKLY", "PCB3(C06)", "RVE.A01 2021.07.01", "WAGO", "GA-26", "Rev45", "41-9", "E129784", and "2020" printed on it.</p>