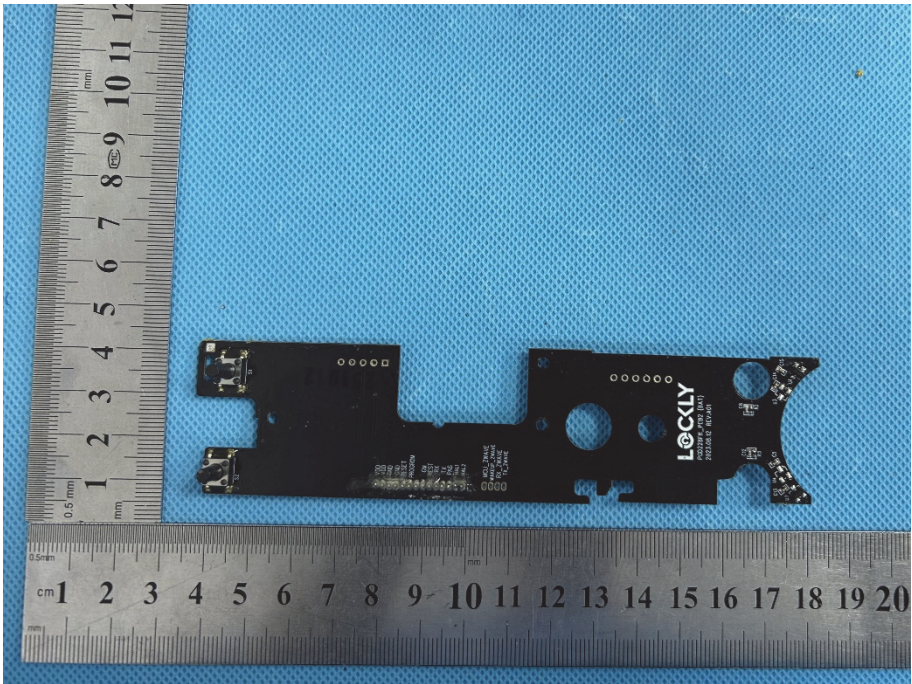
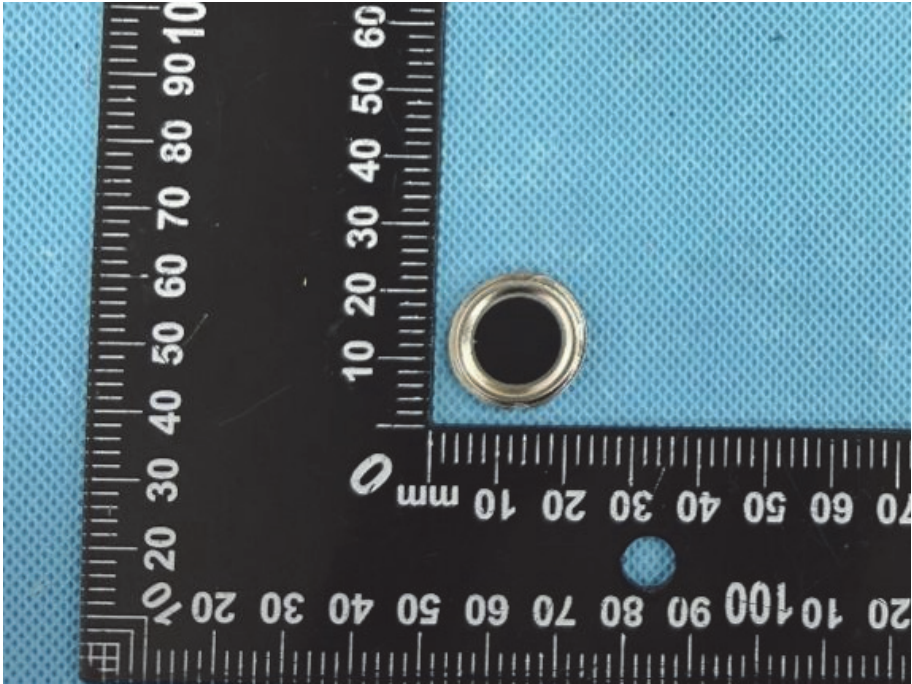
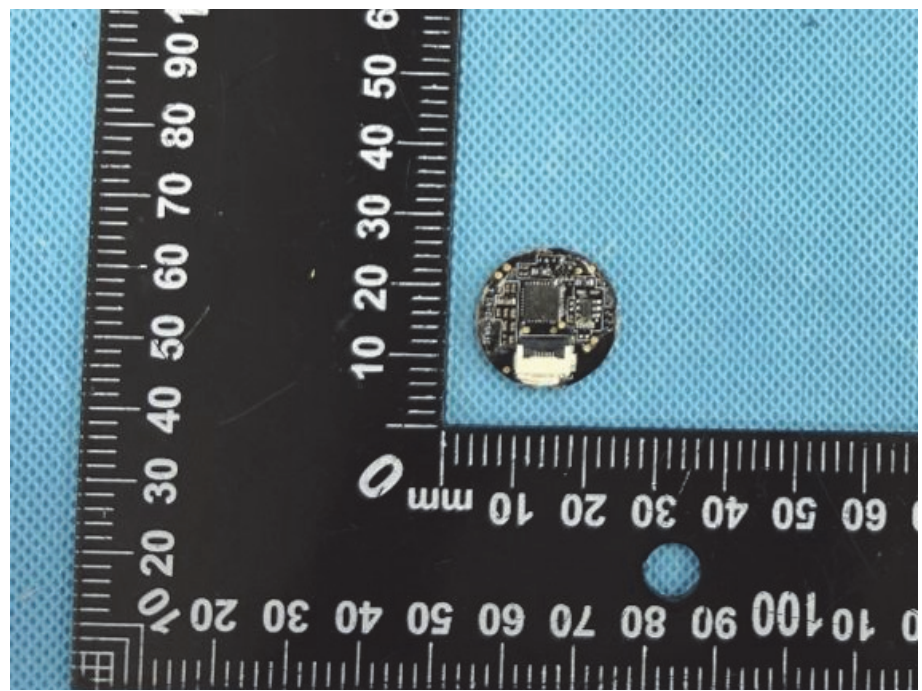


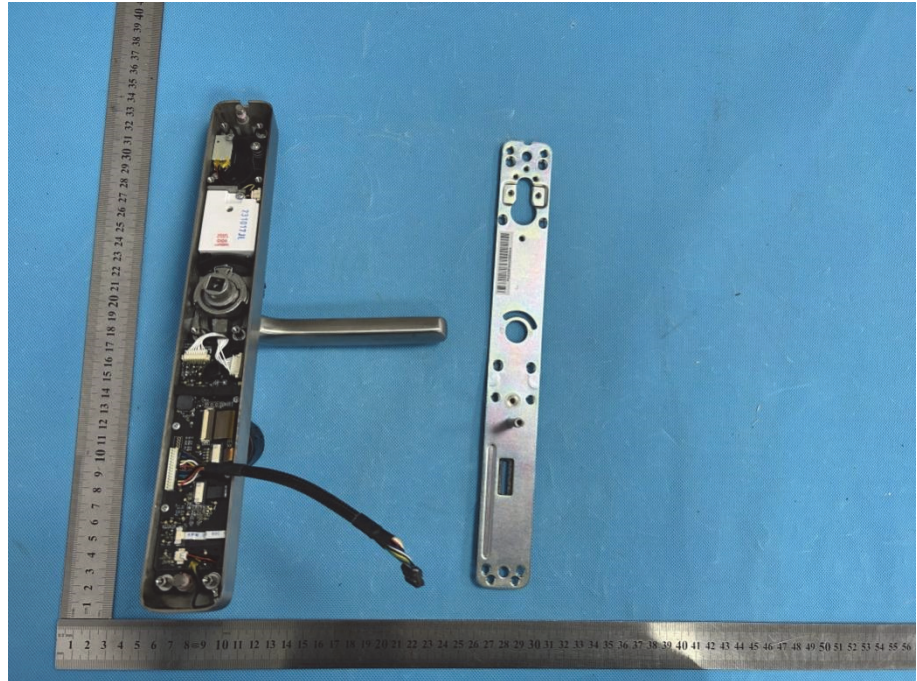
<p>Solder Board-Component View 8</p>	 <p>A photograph of a black solder board component with two connectors on the left and several circular holes on the right. The component is placed on a blue textured surface. Two rulers are used for scale: a vertical one on the left showing millimeter markings from 1 to 12, and a horizontal one at the bottom showing centimeter markings from 1 to 20. The component has the 'LOCKLY' logo and 'POSITIVE POLARITY' text printed on it.</p>
<p>Solder Board-Component View 9</p>	 <p>A close-up photograph of a circular hole in the solder board component. The hole is surrounded by a silver-colored ring. A black ruler with white markings is positioned around the hole for scale, showing millimeter markings from 0 to 100.</p>

**Solder
Board-Component
View 10**

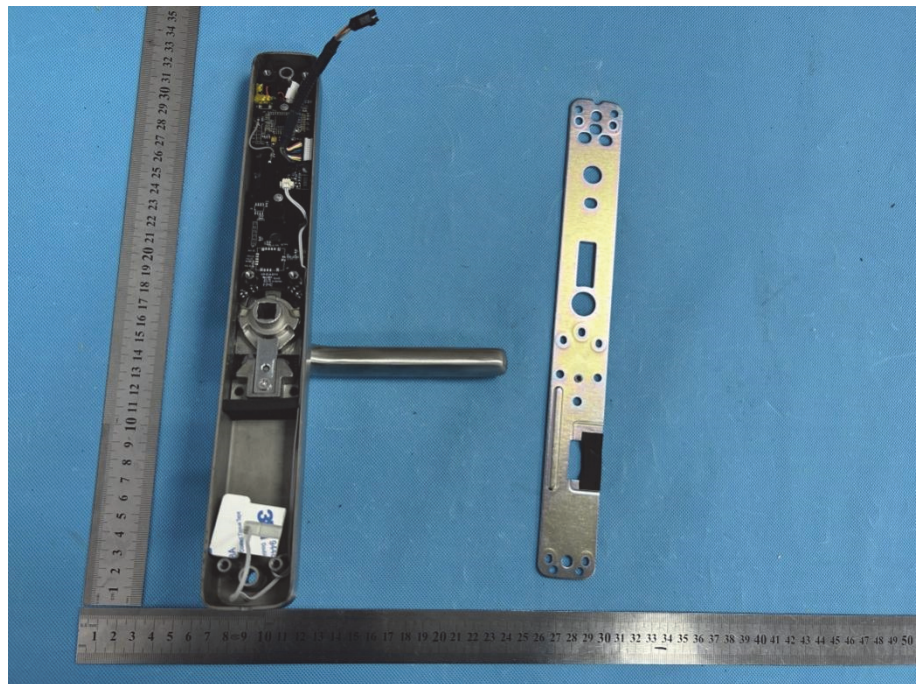


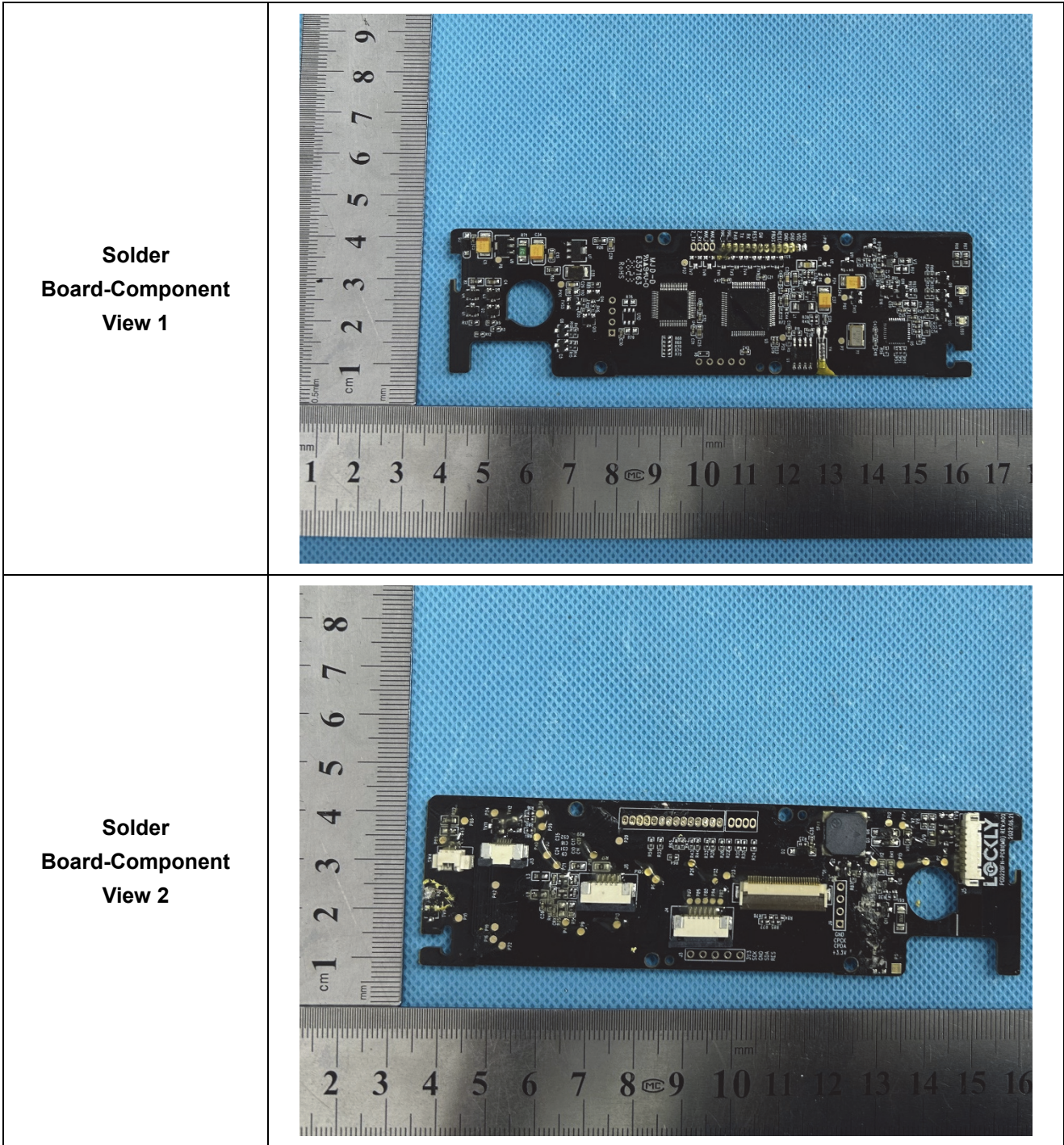
The fingerprint scanner is at the top of the screen

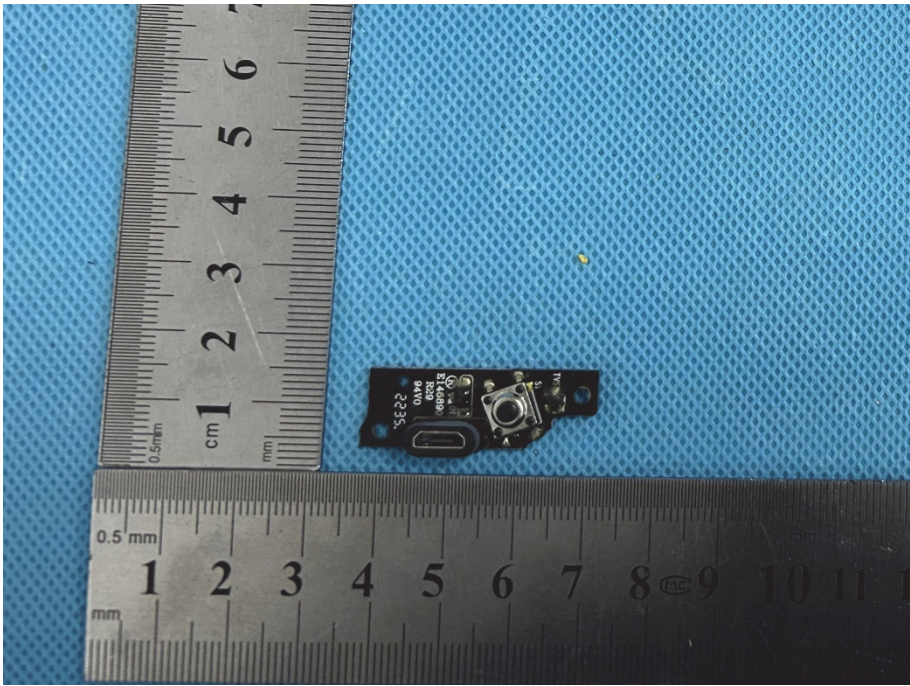
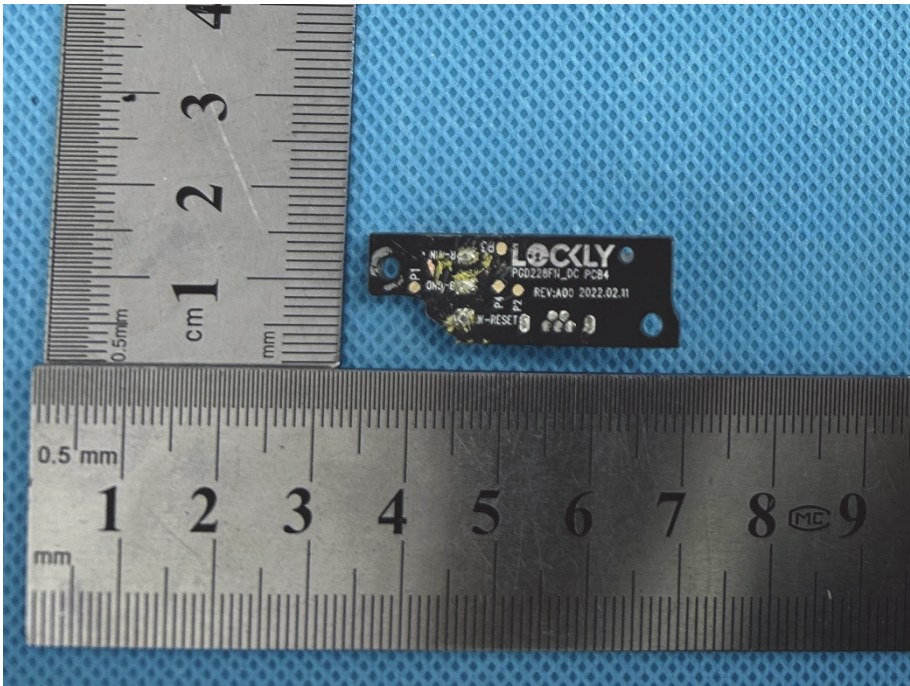
EUT Housing and Board View 1



EUT Housing and Board View 2





<p>Solder Board-Component View 3</p>	 A photograph showing a small, dark-colored PCB component with a circular feature. The component is placed on a blue textured surface next to a ruler for scale. The ruler shows centimeters and millimeters. The component has some markings, including 'SE22', '04W', '882', '0603 2R', and '1.1'. A small yellow dot is visible on the blue surface above the component.
<p>Solder Board-Component View 4</p>	 A photograph showing the same PCB component from a different angle. The component is placed on a blue textured surface next to a ruler for scale. The ruler shows centimeters and millimeters. The component has markings including 'LOCKLY', 'PG0226FN_DC PS04', 'REV:AD0 2022.02.11', and '-RESET'. There are also some smaller markings like 'P1', 'R1', 'R2', 'R3', 'R4', 'R5', 'R6', 'R7', 'R8', 'R9', 'R10', 'R11', 'R12', 'R13', 'R14', 'R15', 'R16', 'R17', 'R18', 'R19', 'R20', 'R21', 'R22', 'R23', 'R24', 'R25', 'R26', 'R27', 'R28', 'R29', 'R30', 'R31', 'R32', 'R33', 'R34', 'R35', 'R36', 'R37', 'R38', 'R39', 'R40', 'R41', 'R42', 'R43', 'R44', 'R45', 'R46', 'R47', 'R48', 'R49', 'R50', 'R51', 'R52', 'R53', 'R54', 'R55', 'R56', 'R57', 'R58', 'R59', 'R60', 'R61', 'R62', 'R63', 'R64', 'R65', 'R66', 'R67', 'R68', 'R69', 'R70', 'R71', 'R72', 'R73', 'R74', 'R75', 'R76', 'R77', 'R78', 'R79', 'R80', 'R81', 'R82', 'R83', 'R84', 'R85', 'R86', 'R87', 'R88', 'R89', 'R90', 'R91', 'R92', 'R93', 'R94', 'R95', 'R96', 'R97', 'R98', 'R99', 'R100'.