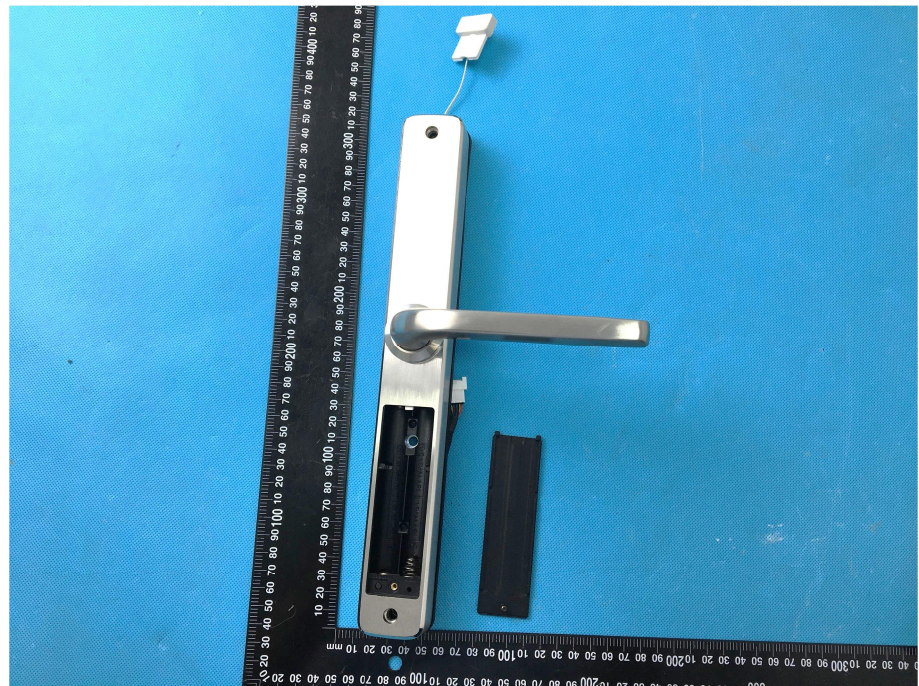
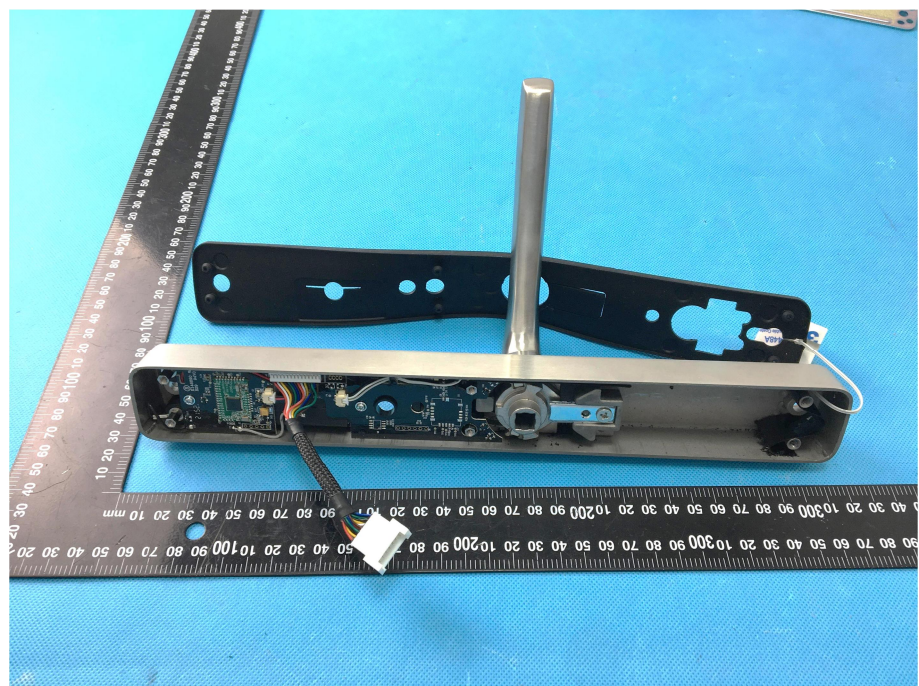


### EXHIBIT 3 - EUT INTERNAL PHOTOGRAPHS


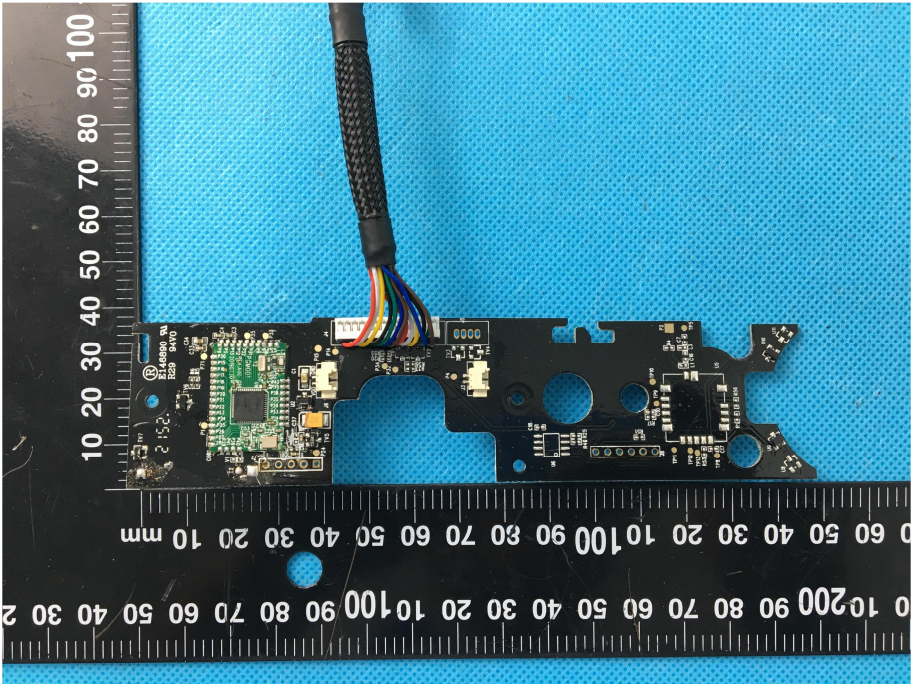
**EUT Housing and Board  
View 1**



**EUT Housing and Board  
View 2**





<p><b>EUT Housing and Board View 3</b></p>	 <p>A photograph showing the EUT housing and board assembly. The assembly is oriented vertically on a blue textured surface. A black ruler is placed horizontally to the left of the assembly, with the 0 mm mark at the top. The assembly consists of a metal housing with a central circular opening and a printed circuit board (PCB) mounted inside. Various electronic components, including a battery, capacitors, and connectors, are visible on the PCB. A black cable is connected to the assembly on the right side.</p>
<p><b>Solder Board-Component View 1</b></p>	 <p>A close-up photograph of the solder board component. The component is a black PCB with various electronic components, including a green microcontroller, resistors, and capacitors. A multi-colored cable is connected to the component. A black ruler is placed horizontally below the component, with the 0 mm mark on the left. The ruler shows measurements in millimeters and centimeters.</p>