
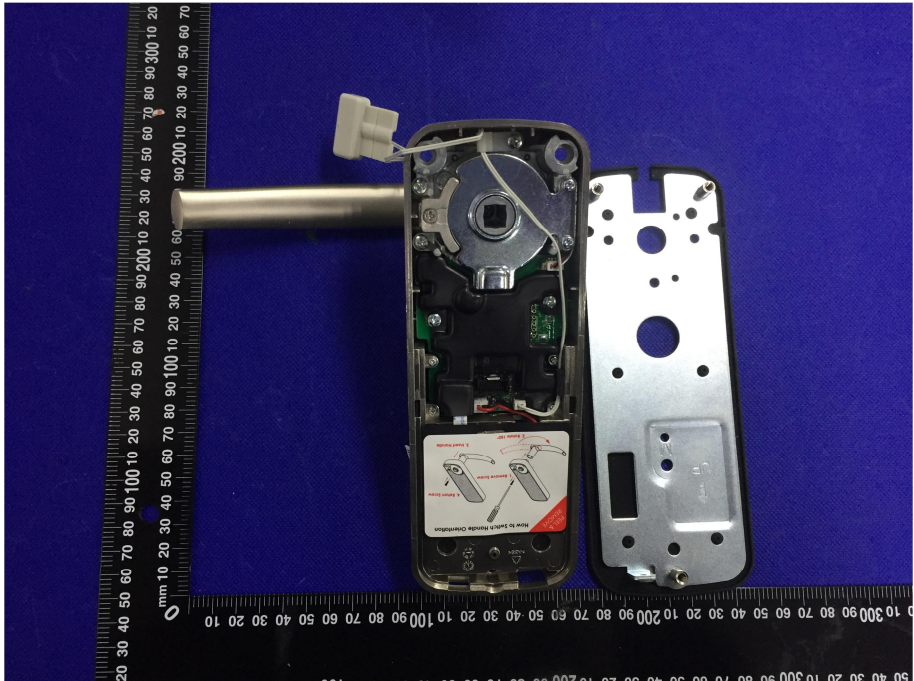


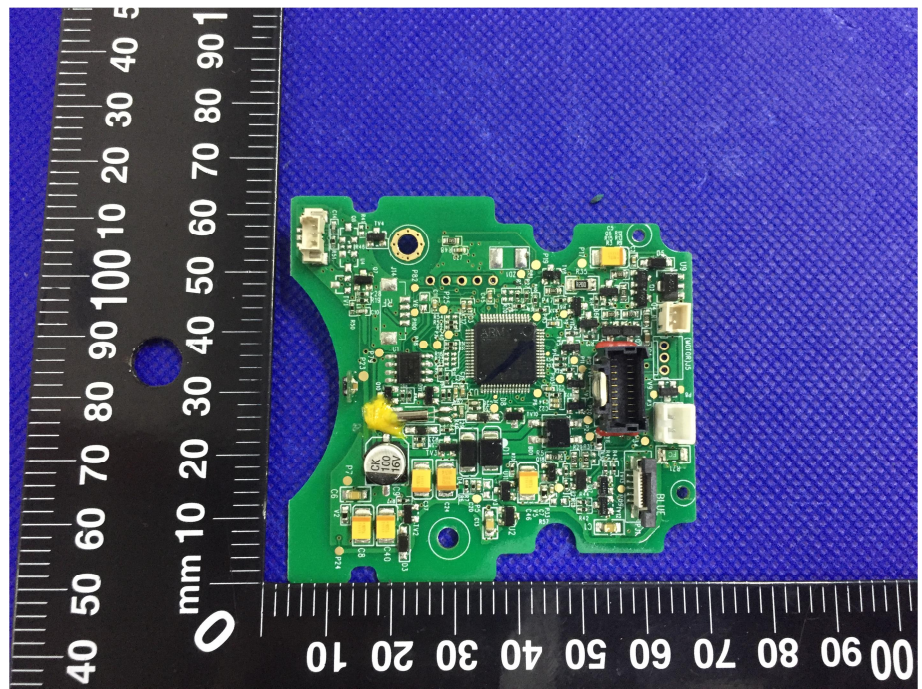
### EXHIBIT 3 - EUT INTERNAL PHOTOGRAPHS

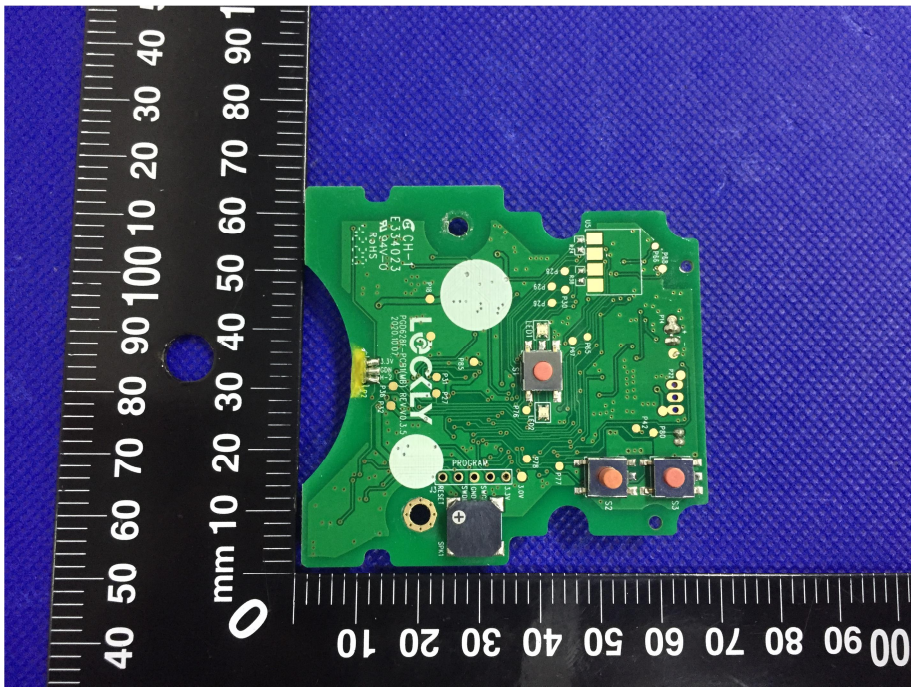
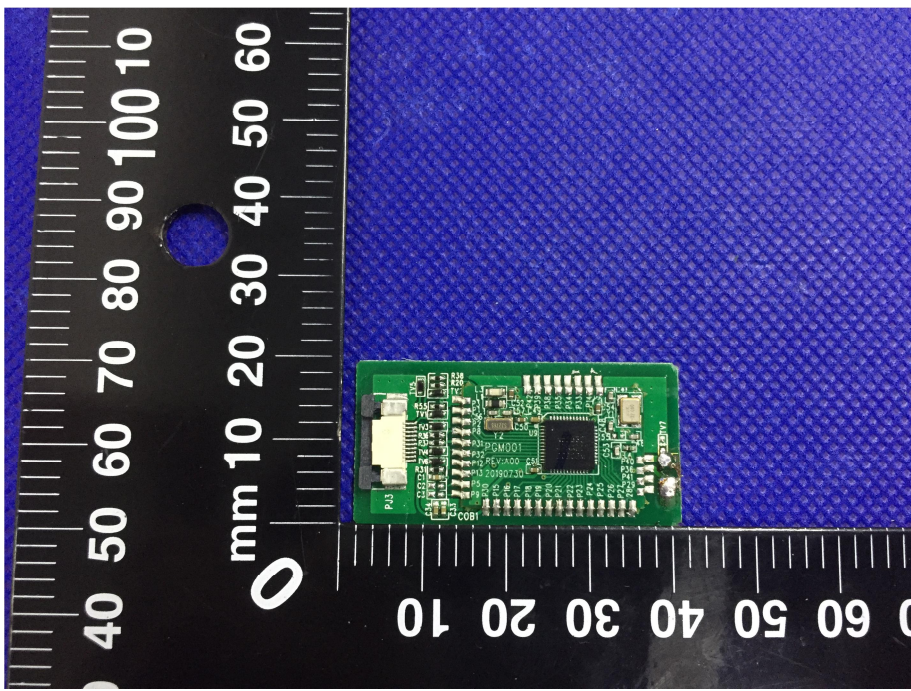
<p><b>EUT Housing and Board View 1</b></p>	
<p><b>EUT Housing and Board View 2</b></p>	

**EUT Housing and Board  
View 3**



**Solder  
Board-Component View  
1**



<p style="text-align: center;"><b>Solder Board-Component View 2</b></p>	 <p>A photograph of a green printed circuit board (PCB) component, labeled 'Solder Board-Component View 2'. The board is irregularly shaped and features various electronic components including a large white circular component, several smaller components, and a black integrated circuit. The board is placed on a blue textured surface next to a black ruler with white markings. The ruler shows measurements in millimeters, with the board's length being approximately 100 mm. The board has 'ATX21' printed on it.</p>
<p style="text-align: center;"><b>Solder Board-Component View 3</b></p>	 <p>A photograph of a green printed circuit board (PCB) component, labeled 'Solder Board-Component View 3'. The board is rectangular and features a large black integrated circuit, several smaller components, and a white connector. The board is placed on a blue textured surface next to a black ruler with white markings. The ruler shows measurements in millimeters, with the board's length being approximately 40 mm. The board has 'ATX21' printed on it.</p>