

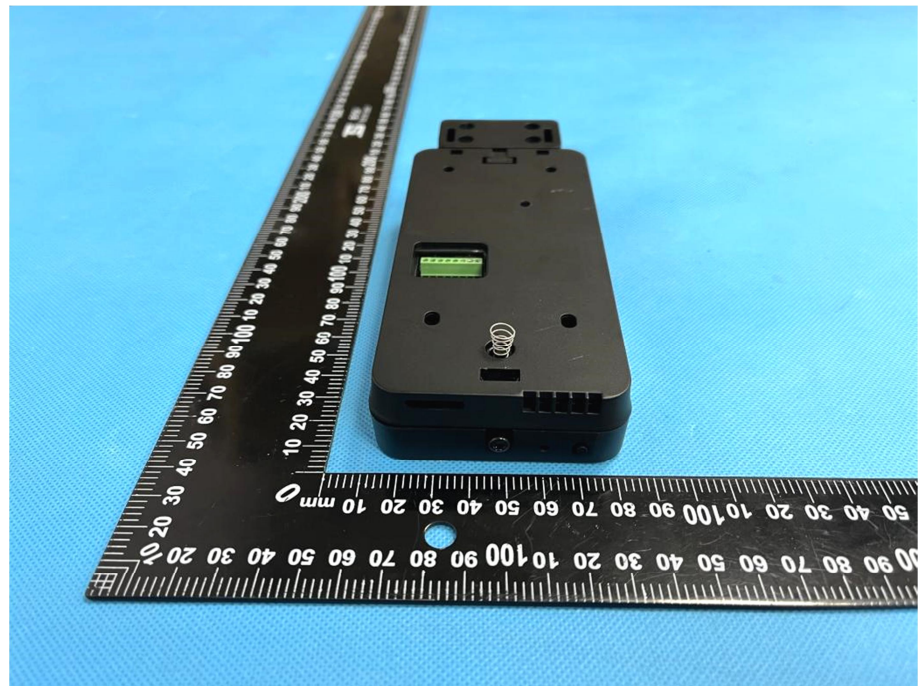


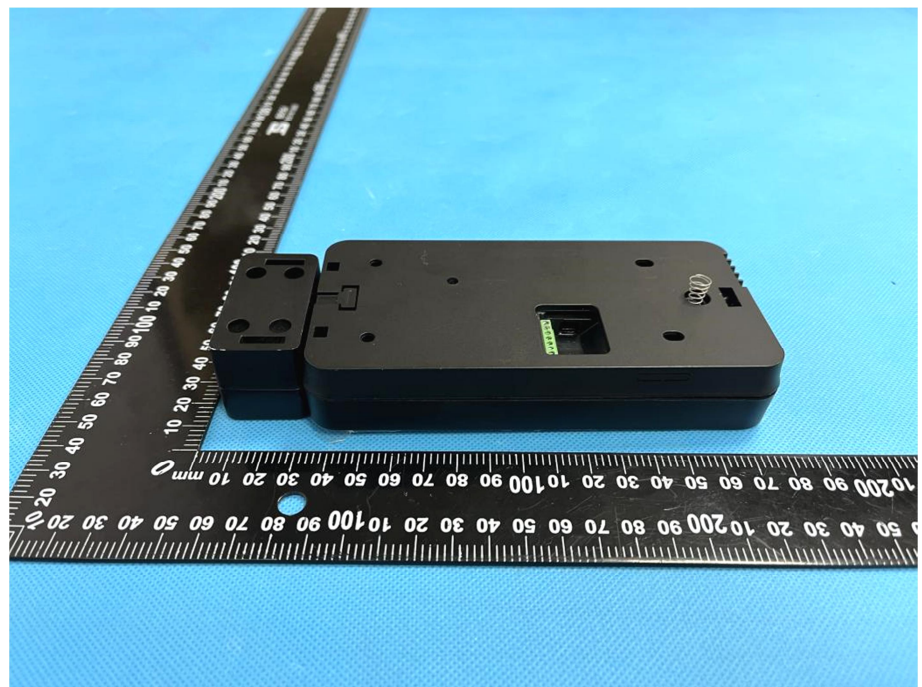
EXHIBIT 2 - EUT EXTERNAL PHOTOGRAPHS

<p>EUT View 1</p>	 A photograph showing the front view of a black mobile phone. The phone is positioned vertically next to a black ruler with white markings. The ruler is oriented vertically, with the 0 mark at the top and the 100 mm mark at the bottom. The phone's screen is dark and unlit. At the top of the phone, there is a camera lens. At the bottom, there is a circular sensor, likely a fingerprint scanner or a proximity sensor. The background is a light blue textured surface.
<p>EUT View 2</p>	 A photograph showing the back view of the same black mobile phone. The phone is positioned vertically next to a black ruler with white markings, similar to the one in View 1. The ruler is oriented vertically, with the 0 mark at the top and the 100 mm mark at the bottom. The back of the phone features a camera module at the top, a central sensor, and other smaller sensors. The background is a light blue textured surface.

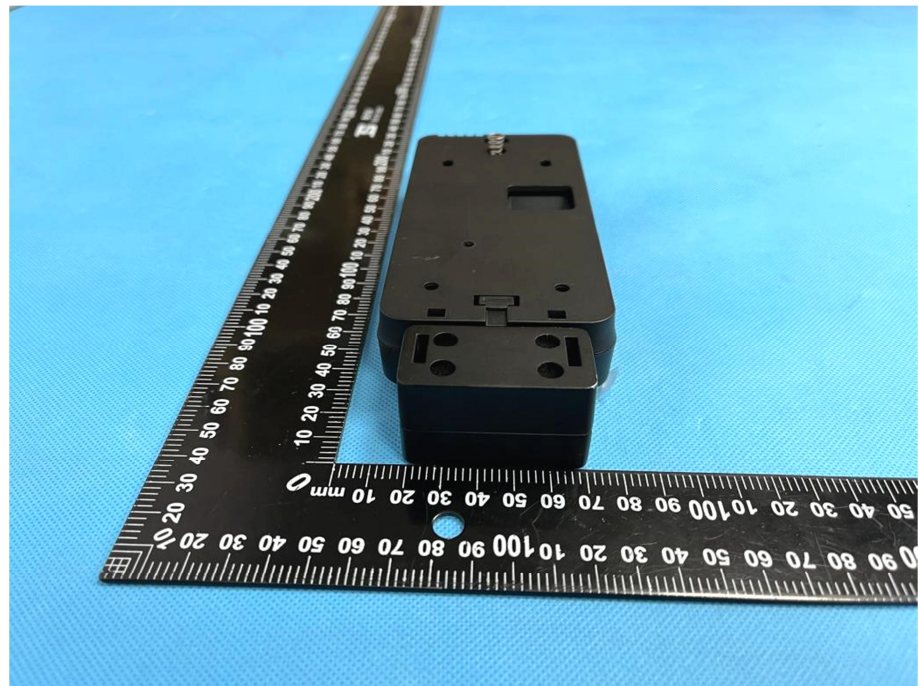
EUT View 3



EUT View 4



EUT View 5



EUT View 6

