

RF Exposure Lab

802 N. Twin Oaks Valley Road, Suite 105 • San Marcos, CA 92069 • U.S.A.

TEL (760) 471-2100 • FAX (760) 471-2121

<http://www.rfexposurelab.com>

CERTIFICATE OF COMPLIANCE SAR EVALUATION

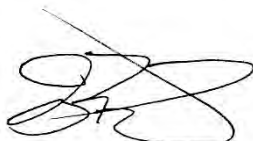
AVIWest, a Haivision Company	Dates of Test:	June 12 – 22, 2023
Parc Edonia, Bat X1, Rue de la Terre de Feu	Test Report Number:	SAR.20230608
35760 Saint-Gregoire		Revision A
France	Lab Designation Number:	US1195 (FCC); US0194 (ISED)

FCC ID:	2ASIK-EM91 & 2ASIK-CB178NF
IC Certificate:	21415-EM91 & 21415-CB178NF
HVIN/Model(s):	Pro360-5G
Contains Cellular Module:	Aviwest Model EM9191
Contains WiFi Module:	Aviwest Model AW-CB178NF
Test Sample:	Engineering Unit Same as Production
Serial Number:	AVWPRO31222008399
Equipment Type:	Wireless Video Transceiver
Classification:	Portable Transmitter Next to Body
TX Frequency Range:	663 – 698 MHz, 699 – 716 MHz, 824 – 849 MHz, 1710 – 1780 MHz, 1850 – 1915 MHz, 2500 – 2570 MHz, 2570 – 2620 MHz, 3550 – 3700 MHz, 3300 – 4200 MHz
Frequency Tolerance:	± 2.5 ppm
Maximum RF Output:	600 MHz (FR1) – 24.5 dBm, 750 MHz (FR1) – 24.5 dBm, 850 MHz (FR1) – 24.5 dBm, 1750 MHz (FR1) – 24.5 dBm, 1900 MHz (FR1) – 24.5 dBm, 2550 MHz (FR1) – 24.5 dBm, 3600 MHz (FR1) – 24.5 dBm, 3700 MHz (FR1) – 24.5 dBm Conducted
Signal Modulation:	DFT-s-OFDM/CP-OFDM, Pi2 BPSK
Antenna Type:	Internal
Application Type:	Certification
FCC Rule Parts:	Part 2, 22, 24, 27, 90
KDB Test Methodology:	KDB 447498 D01 v06, KDB 941225 D05 v02r05
Industry Canada:	RSS-102 Issue 6, Safety Code 6
Max. Stand Alone SAR Value:	1.30 W/kg Reported
Max. Simultaneous Value:	0.04 Separation Ratio
Separation Distance:	15 mm

This wireless mobile and/or portable device has been shown to be compliant for localized specific absorption rate (SAR) for uncontrolled environment/general exposure limits specified in ANSI/IEEE Std. C95.1-1992 and had been tested in accordance with the measurement procedures specified in IEEE 1528-2013 and IEC 62209-1528:2020 (See test report).

I attest to the accuracy of the data. All measurements were performed by myself or were made under my supervision and are correct to the best of my knowledge and belief. I assume full responsibility for the completeness of these measurements and vouch for the qualifications of all persons taking them.

RF Exposure Lab, LLC certifies that no party to this application is subject to a denial of Federal benefits that includes FCC benefits pursuant to Section 5301 of the Anti-Drug Abuse Act of 1988, 21 U.S.C. 853(a).



Jay M. Moulton
Vice President



Testing Cert. # 2387.01

Table of Contents

1. Introduction	4
SAR Definition [5]	6
2. SAR Measurement Setup	7
Robotic System	7
System Hardware	7
System Electronics	8
Probe Measurement System	8
3. Probe and Dipole Calibration	15
4. Phantom & Simulating Tissue Specifications	16
Head & Body Simulating Mixture Characterization	16
5. ANSI/IEEE C95.1 – 1992 RF Exposure Limits [2]	17
Uncontrolled Environment	17
Controlled Environment	17
6. Measurement Uncertainty	18
7. System Validation	19
Tissue Verification	19
Test System Verification	19
8. SAR Test Data Summary	20
Procedures Used To Establish Test Signal	20
Device Test Condition	20
9. SAR Test Results	44
10. Simultaneous Transmission Analysis	48
11. Test Equipment List	58
12. Conclusion	59
13. References	60
Appendix A – System Validation Plots and Data	61
Appendix B – SAR Test Data Plots	75
Appendix C – SAR Test Setup Photos	85
Appendix D – Probe Calibration Data Sheets	90
Appendix E – Dipole Calibration Data Sheets	113
Appendix F – DAE Calibration Data Sheets	174
Appendix G – Phantom Calibration Data Sheets	180
Appendix H – Validation Summary	182

Comment/Revision	Date
Original Release	July 6, 2023
Revision A – Replace Sierra Wireless & Azureware with Aviwest on page 1, evaluated report to RSS-102 Issue 6, add 'The 15 mm gap is the thickness of the backpack' on page 20, add exclusion of BT testing on page 20 and correct type of Extremity to Body on page 49	June 13, 2024

Note: The latest version supersedes all previous versions listed in the above table. The latest version shall be used.

1. Introduction

This measurement report shows compliance of the AVIWest, a Haivision Company Model Pro360-5G FCC ID: 2ASIK-EM91 & 2ASIK-CB178NF with FCC Part 2, 1093, ET Docket 93-62 Rules for mobile and portable devices and IC Certificate: 21415-EM91 & 21415-CB178NF with RSS102 Issue 6 & Safety Code 6. The FCC/ISED have adopted the guidelines for evaluating the environmental effects of radio frequency radiation to protect the public and workers from the potential hazards of RF emissions due to FCC/ISED regulated portable devices. [1], [6]

The test results recorded herein are based on a single type test of AVIWest, a Haivision Company Model Pro360-5G and therefore apply only to the tested sample.

The testing in this report was conducted on two transmit antennas. One in each plane of the device. The two remaining antennas on the same plane with the same distance were spot checked to verify the values were similar. Antenna M1 and M3 were chosen to do a full evaluation. Antennas M2, M4, M5 and M6 were spot checked. Both of the WiFi antennas had a full evaluation conducted on each antenna.

The test procedures and limits, as described in ANSI C95.1 – 1999 Standard for Safety Levels with Respect to Human Exposure to Radio Frequency Electromagnetic Fields, 3 kHz to 300 GHz [2], ANSI C95.3 – 2002 Recommended Practice for the Measurement of Potentially Hazardous Electromagnetic Fields [3], IEEE Std.1528 – 2013 Recommended Practice [4], and Industry Canada Safety Code 6 Limits of Human Exposure to Radiofrequency Electromagnetic Fields in the Frequency Range from 3kHz to 300 GHz were employed.

The following table indicates all the wireless technologies operating in the Pro360-5G Wireless Video Transceiver. The table also shows the tolerance for the power level for each mode.

Band	Technology	3GPP Nominal Power dBm	Calibrated Nominal Power dBm	Tolerance dBm	Lower Tolerance dBm	Upper Tolerance dBm
Band n2	FR1	23.7	23.7	+0.8/-2.2	21.5	24.5
Band n5	FR1	23.7	23.7	+0.8/-2.2	21.5	24.5
Band n7	FR1	23.0	23.0	+1.5/-1.5	21.5	24.5
Band n12	FR1	23.0	23.0	+1.5/-1.5	21.5	24.5
Band n25	FR1	23.0	23.0	+1.5/-1.5	21.5	24.5
Band n38	FR1	23.0	23.0	+1.5/-1.5	21.5	24.5
Band n48	FR1	23.7	23.7	+0.8/-2.2	21.5	24.5
Band n66	FR1	23.7	23.7	+0.8/-2.2	21.5	24.5
Band n71	FR1	23.0	23.0	+1.5/-1.5	21.5	24.5
Band n77	FR1	23.7	23.7	+0.8/-2.2	21.5	24.5
Band n78	FR1	23.0	23.0	+1.5/-1.5	21.5	24.5

LTE UL CA Combinations (Aggregate Power)

Band UL 2CA Combination	Technology	Class	Nominal dBm	Tolerance dBm	Lower Tolerance dBm	Upper Tolerance dBm
12A-4A	LTE	23.0	23.0	+1.0/-1.0	22.0	24.0
12A-2A	LTE	23.0	23.0	+1.0/-1.0	22.0	24.0
13A-2A	LTE	23.0	23.0	+1.0/-1.0	22.0	24.0
13A-4A	LTE	23.0	23.0	+1.0/-1.0	22.0	24.0
5A-2A	LTE	23.0	23.0	+1.0/-1.0	22.0	24.0
5A-4A	LTE	23.0	23.0	+1.0/-1.0	22.0	24.0
66A-2A	LTE	23.0	23.0	+1.0/-1.0	22.0	24.0
66A-5A	LTE	23.0	23.0	+1.0/-1.0	22.0	24.0
7A-5A	LTE	23.0	23.0	+1.0/-1.0	22.0	24.0

FR1 NSA UL ENDC Combinations (Aggregate Power)

Band UL ENDC Combination	Technology	Class	Nominal dBm	Tolerance dBm	Lower Tolerance dBm	Upper Tolerance dBm
12A-n66A	LTE+FR1	3	23.0	+1.5/-1.5	21.5	24.5
12A-n2A	LTE+FR1	3	23.0	+1.5/-1.5	21.5	24.5
13A-n66A	LTE+FR1	3	23.0	+1.5/-1.5	21.5	24.5
13A-n2A	LTE+FR1	3	23.0	+1.5/-1.5	21.5	24.5
2A-n5A	LTE+FR1	3	23.0	+1.5/-1.5	21.5	24.5
2A-n71A	LTE+FR1	3	23.0	+1.5/-1.5	21.5	24.5
41A-n77A	LTE+FR1	3	23.0	+1.5/-1.5	21.5	24.5
5A-n66A	LTE+FR1	3	23.0	+1.5/-1.5	21.5	24.5
5A-n2A	LTE+FR1	3	23.0	+1.5/-1.5	21.5	24.5
66A-n5A	LTE+FR1	3	23.0	+1.5/-1.5	21.5	24.5
66A-n71A	LTE+FR1	3	23.0	+1.5/-1.5	21.5	24.5
7A-n5A	LTE+FR1	3	23.0	+1.5/-1.5	21.5	24.5
7A-n71A	LTE+FR1	3	23.0	+1.5/-1.5	21.5	24.5

SAR Definition [5]

Specific Absorption Rate is defined as the time derivative (rate) of the incremental energy (dW) absorbed by (dissipated in) an incremental mass (dm) contained in a volume element (dV) of a given density (ρ).

$$SAR = \frac{d}{dt} \left(\frac{dW}{dm} \right) = \frac{d}{dt} \left(\frac{dW}{\rho dV} \right)$$

SAR is expressed in units of watts per kilogram (W/kg). SAR can be related to the electric field at a point by

$$SAR = \frac{\sigma |E|^2}{\rho}$$

where:

σ = conductivity of the tissue (S/m)

ρ = mass density of the tissue (kg/m³)

E = rms electric field strength (V/m)

2. SAR Measurement Setup

Robotic System

These measurements are performed using the DASY52 automated dosimetric assessment system. The DASY52 is made by Schmid & Partner Engineering AG (SPEAG) in Zurich, Switzerland and consists of high precision robotics system (Staubli), robot controller, Intel Core2 computer, near-field probe, probe alignment sensor, and the generic twin phantom containing the brain equivalent material. The robot is a six-axis industrial robot performing precise movements to position the probe to the location (points) of maximum electromagnetic field (EMF) (see Fig. 2.1).

System Hardware

A cell controller system contains the power supply, robot controller teach pendant (Joystick), and a remote control used to drive the robot motors. The PC consists of the HP Intel Core2 computer with Windows XP system and SAR Measurement Software DASY52, A/D interface card, monitor, mouse, and keyboard. The Staubli Robot is connected to the cell controller to allow software manipulation of the robot. A data acquisition electronic (DAE) circuit that performs the signal amplification, signal multiplexing, AD-conversion, offset measurements, mechanical surface detection, collision detection, etc. is connected to the Electro-optical coupler (EOC). The EOC performs the conversion from the optical into digital electric signal of the DAE and transfers data to the PC plug-in card.

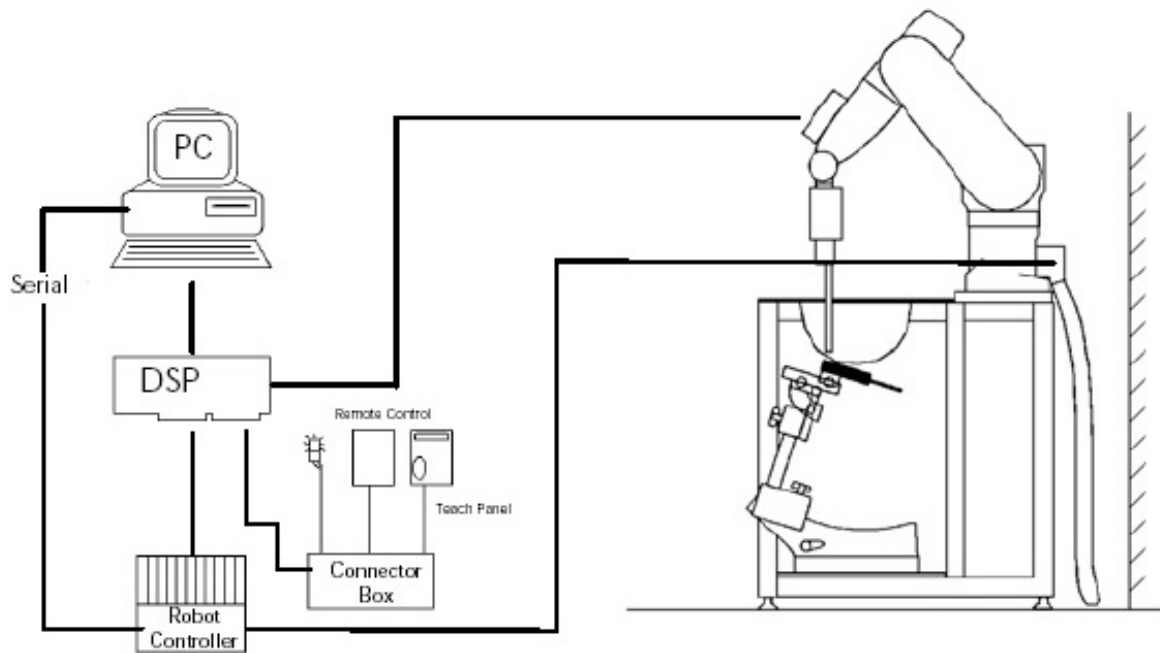


Figure 2.1 SAR Measurement System Setup

System Electronics

The DAE4 consists of a highly sensitive electrometer-grade preamplifier with auto-zeroing, a channel and gain-switching multiplexer, a fast 16 bit AD-converter and a command decoder and control logic unit. Transmission to the PC-card is accomplished through an optical downlink for data and status information and an optical uplink for commands and clock lines. The mechanical probe mounting device includes two different sensor systems for frontal and sidewise probe contacts. They are also used for mechanical surface detection and probe collision detection. The robot uses its own controller with a built in VME-bus computer. The system is described in detail in.

Probe Measurement System

The SAR measurements were conducted with the dosimetric probe EX3DV4, designed in the classical triangular configuration (see Fig. 2.2) and optimized for dosimetric evaluation. The probe is constructed using the thick film technique; with printed resistive lines on ceramic substrates. The probe is equipped with an optical multi fiber line ending at the front of the probe tip. (see Fig. 2.3) It is connected to the EOC box on the robot arm and provides an automatic detection of the phantom surface. Half of the fibers are connected to a pulsed infrared transmitter, the other half to a synchronized receiver. As the probe approaches the surface, the reflection from the surface produces a coupling from the transmitting to the receiving fibers. This reflection increases first during the approach, reaches maximum and then decreases. If the probe is flatly touching the surface, the coupling is zero. The distance of the coupling maximum to the surface is independent of the surface reflectivity and largely independent of the surface to probe angle. The DASY52 software reads the reflection during a software approach and looks for the maximum using a 2nd order fitting. The approach is stopped at reaching the maximum.



DAE System

Probe Specifications

Calibration: In air from 10 MHz to 6.0 GHz
In brain and muscle simulating tissue at Frequencies of 450 MHz, 835 MHz, 1750 MHz, 1900 MHz, 2450 MHz, 2600 MHz, 3500 MHz, 5200 MHz, 5300 MHz, 5600 MHz, 5800 MHz

Frequency: 10 MHz to 6 GHz

Linearity: ± 0.2 dB (30 MHz to 6 GHz)

Dynamic: 10 mW/kg to 100 W/kg

Range: Linearity: ± 0.2 dB

Dimensions: Overall length: 330 mm

Tip length: 20 mm

Body diameter: 12 mm

Tip diameter: 2.5 mm

Distance from probe tip to sensor center: 1 mm

Application: SAR Dosimetry Testing
Compliance tests of wireless device

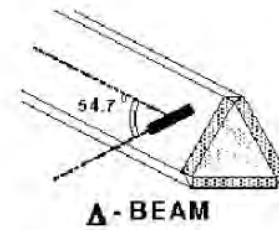


Figure 2.2 Triangular Probe Configurations



Figure 2.3 Probe Thick-Film Technique

Probe Calibration Process

Dosimetric Assessment Procedure

Each probe is calibrated according to a dosimetric assessment procedure described in with accuracy better than +/- 10%. The spherical isotropy was evaluated with the procedure described in and found to be better than +/-0.25dB. The sensitivity parameters (Norm X, Norm Y, Norm Z), the diode compression parameter (DCP) and the conversion factor (Conv F) of the probe is tested.

Free Space Assessment

The free space E-field from amplified probe outputs is determined in a test chamber. This is performed in a TEM cell for frequencies below 1 GHz, and in a waveguide above 1GHz for free space. For the free space calibration, the probe is placed in the volumetric center of the cavity at the proper orientation with the field. The probe is then rotated 360 degrees until the three channels show the maximum reading. The power density readings equates to 1 mW/cm².

Temperature Assessment *

E-field temperature correlation calibration is performed in a flat phantom filled with the appropriate simulated brain tissue. The measured free space E-field in the medium, correlates to temperature rise in a dielectric medium. For temperature correlation calibration a RF transparent thermistor based temperature probe is used in conjunction with the E-field probe

$$SAR = C \frac{\Delta T}{\Delta t}$$

$$SAR = \frac{|E|^2 \cdot \sigma}{\rho}$$

where:

where:

Δt = exposure time (30 seconds),

σ = simulated tissue conductivity,

C = heat capacity of tissue (brain or muscle),

ρ = Tissue density (1.25 g/cm³ for brain tissue)

ΔT = temperature increase due to RF exposure.

SAR is proportional to $\Delta T / \Delta t$, the initial rate of tissue heating, before thermal diffusion takes place.

Now it's possible to quantify the electric field in the simulated tissue by equating the thermally derived SAR to the E- field;

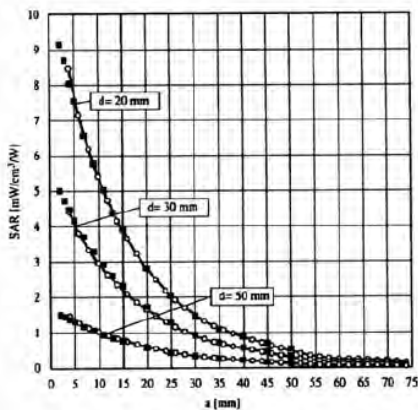


Figure 2.4 E-Field and Temperature Measurements at 900MHz

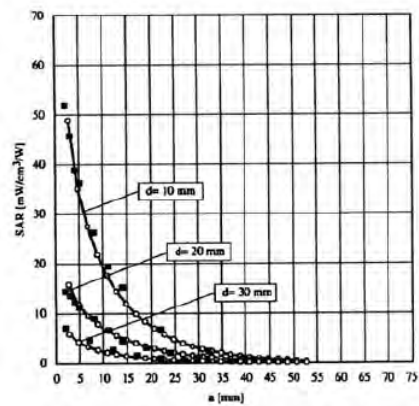


Figure 2.5 E-Field and Temperature Measurements at 1800MHz

Data Extrapolation

The DASY52 software automatically executes the following procedures to calculate the field units from the microvolt readings at the probe connector. The first step of the evaluation is a linearization of the filtered input signal to account for the compression characteristics of the detector diode. The compensation depends on the input signal, the diode type and the DC-transmission factor from the diode to the evaluation electronics. If the exciting field is pulsed, the crest factor of the signal must be known to correctly compensate for peak power. The formula for each channel can be given like below;

$$V_i = U_i + U_i^2 \cdot \frac{cf}{dcp_i}$$

with V_i = compensated signal of channel i (i=x,y,z)
 U_i = input signal of channel i (i=x,y,z)
 cf = crest factor of exciting field (DASY parameter)
 dcp_i = diode compression point (DASY parameter)

From the compensated input signals the primary field data for each channel can be evaluated:

E-field probes:

$$E_i = \sqrt{\frac{V_i}{Norm_i \cdot ConvF}}$$

with V_i = compensated signal of channel i (i = x,y,z)
 $Norm_i$ = sensor sensitivity of channel i (i = x,y,z)
 $\mu V/(V/m)^2$ for E-field probes
 $ConvF$ = sensitivity of enhancement in solution
 E_i = electric field strength of channel i in V/m

The RSS value of the field components gives the total field strength (Hermetian magnitude):

$$E_{tot} = \sqrt{E_x^2 + E_y^2 + E_z^2}$$

The primary field data are used to calculate the derived field units.

$$SAR = E_{tot}^2 \cdot \frac{\sigma}{\rho \cdot 1000}$$

with SAR = local specific absorption rate in W/g
 E_{tot} = total field strength in V/m
 σ = conductivity in [mho/m] or [Siemens/m]
 ρ = equivalent tissue density in g/cm³

The power flow density is calculated assuming the excitation field to be a free space field.

$$P_{free} = \frac{E_{tot}^2}{3770}$$

with P_{pwe} = equivalent power density of a plane wave in W/cm²
 E_{tot} = total electric field strength in V/m

Scanning procedure

- The DASYS installation includes predefined files with recommended procedures for measurements and system check. They are read-only document files and destined as fully defined but unmeasured masks. All test positions (head or body-worn) are tested with the same configuration of test steps differing only in the grid definition for the different test positions.
- The „reference“ and „drift“ measurements are located at the beginning and end of the batch process. They measure the field drift at one single point in the liquid over the complete procedure. The indicated drift is mainly the variation of the DUT’s output power and should vary max. +/- 5 %.
- The highest integrated SAR value is the main concern in compliance test applications. These values can mostly be found at the inner surface of the phantom and cannot be measured directly due to the sensor offset in the probe. To extrapolate the surface values, the measurement distances to the surface must be known accurately. A distance error of 0.5mm could produce SAR errors of 6% at 1800 MHz. Using predefined locations for measurements is not accurate enough. Any shift of the phantom (e.g., slight deformations after filling it with liquid) would produce high uncertainties. For an automatic and accurate detection of the phantom surface, the DASYS5 system uses the mechanical surface detection. The detection is always at touch, but the probe will move backward from the surface the indicated distance before starting the measurement.
- The „area scan“ measures the SAR above the DUT or verification dipole on a parallel plane to the surface. It is used to locate the approximate location of the peak SAR with 2D spline interpolation. The robot performs a stepped movement along one grid axis while the local electrical field strength is measured by the probe. The probe is touching the surface of the SAM during acquisition of measurement values. The scan uses different grid spacings for different frequency measurements. Standard grid spacing for head measurements in frequency ranges ≤ 2GHz is 15 mm in x - and y- dimension. For higher frequencies a finer resolution is needed, thus for the grid spacing is reduced according the following table:

Area scan grid spacing for different frequency ranges	
Frequency range	Grid spacing
≤ 2 GHz	≤ 15 mm
2 – 4 GHz	≤ 12 mm
4 – 6 GHz	≤ 10 mm

Grid spacing and orientation have no influence on the SAR result. For special applications where the standard scan method does not find the peak SAR within the grid, e.g. mobile phones with flip cover, the grid can be adapted in orientation. Results of this coarse scan are shown in annex B.

- A „zoom scan“ measures the field in a volume around the 2D peak SAR value acquired in the previous „coarse“ scan. It uses a fine meshed grid where the robot moves the probe in steps along all the 3 axis (x,y and z-axis) starting at the bottom of the Phantom. The grid spacing for the cube measurement is varied according to the measured frequency range, the dimensions are given in the following table:

Zoom scan grid spacing and volume for different frequency ranges			
Frequency range	Grid spacing for x, y axis	Grid spacing for z axis	Minimum zoom scan volume
≤ 2 GHz	≤ 8 mm	≤ 5 mm	≥ 30 mm
2 – 3 GHz	≤ 5 mm	≤ 5 mm	≥ 28 mm
3 – 4 GHz	≤ 5 mm	≤ 4 mm	≥ 28 mm
4 – 5 GHz	≤ 4 mm	≤ 3 mm	≥ 25 mm
5 – 6 GHz	≤ 4 mm	≤ 2 mm	≥ 22 mm

DASY is also able to perform repeated zoom scans if more than 1 peak is found during area scan. In this document, the evaluated peak 1g and 10g averaged SAR values are shown in the 2D-graphics in annex B. Test results relevant for the specified standard (see section 3) are shown in table form in section 7.

Spatial Peak SAR Evaluation

The spatial peak SAR - value for 1 and 10 g is evaluated after the Cube measurements have been done. The basis of the evaluation are the SAR values measured at the points of the fine cube grid consisting of all points in the three directions x, y and z. The algorithm that finds the maximal averaged volume is separated into three different stages.

- The data between the dipole center of the probe and the surface of the phantom are extrapolated. This data cannot be measured since the center of the dipole is 1 to 2.7 mm away from the tip of the probe and the distance between the surface and the lowest measuring point is about 1 mm (see probe calibration sheet). The extrapolated data from a cube measurement can be visualized by selecting 'Graph Evaluated'.
- The maximum interpolated value is searched with a straight-forward algorithm. Around this maximum the SAR - values averaged over the spatial volumes (1g or 10 g) are computed using the 3d-spline interpolation algorithm. If the volume cannot be evaluated (i.e., if a part of the grid was cut off by the boundary of the measurement area) the evaluation will be started on the corners of the bottom plane of the cube.
- All neighbouring volumes are evaluated until no neighbouring volume with a higher average value is found.

Extrapolation

The extrapolation is based on a least square algorithm [W. Gander, Computermathematik, p.168-180]. Through the points in the first 3 cm along the z-axis, polynomials of order four are calculated. These polynomials are then used to evaluate the points between the surface and the probe tip. The points, calculated from the surface, have a distance of 1 mm from each other.

Interpolation

The interpolation of the points is done with a 3d-Spline. The 3d-Spline is composed of three one-dimensional splines with the "Not a knot"-condition [W. Gander, Computermathematik, p.141-150] (x, y and z -direction) [Numerical Recipes in C, Second Edition, p.123ff].

Volume Averaging

At First the size of the cube is calculated. Then the volume is integrated with the trapezoidal algorithm. 8000 points (20x20x20) are interpolated to calculate the average.

Advanced Extrapolation

DASY uses the advanced extrapolation option which is able to compensate boundary effects on E-field probes.

SAM PHANTOM

The SAM Twin Phantom V4.0 is constructed of a fiberglass shell integrated in a wooden table. The shape of the shell is based on data from an anatomical study designed to determine the maximum exposure in at least 90% of all users. It enables the dosimetric evaluation of left and right hand phone usage as well as body mounted usage at the flat phantom region. A cover prevents the evaporation of the liquid. Reference markings on the Phantom allow the complete setup of all predefined phantom positions and measurement grids by manually teaching three points in the robot. (see Fig. 2.6)

Phantom Specification

Phantom: SAM Twin Phantom (V4.0)
Shell Material: Vivac Composite
Thickness: 2.0 ± 0.2 mm



Figure 2.6 SAM Twin Phantom

Device Holder for Transmitters

In combination with the SAM Twin Phantom V4.0 the Mounting Device (see Fig. 2.7), enables the rotation of the mounted transmitter in spherical coordinates whereby the rotation point is the ear opening. The devices can be easily, accurately, and repeat ably be positioned according to the FCC, CENELEC, IEC and IEEE specifications. The device holder can be locked at different phantom locations (left head, right head, flat phantom).



Figure 2.7 Mounting Device

Note: A simulating human hand is not used due to the complex anatomical and geometrical structure of the hand that may produce infinite number of configurations. To produce the worst-case condition (the hand absorbs antenna output power), the hand is omitted during the tests.

3. Probe and Dipole Calibration

See Appendix D and E.

4. Phantom & Simulating Tissue Specifications

Head & Body Simulating Mixture Characterization

The head mixture consist of the material based on the table listed below. The mixture is calibrated to obtain proper dielectric constant (permittivity) and conductivity of the desired tissue.

Table 4.1 Typical Composition of Ingredients for Tissue

Ingredients		Simulating Tissue				
		750 MHz Head	900 MHz Head	1750 MHz Head	1900 MHz Head	2300 MHz Head
Mixing Percentage						
Water		Proprietary Purchased From Speag				
Sugar						
Salt						
HEC						
Bactericide						
DGBE						
Dielectric Constant	Target	41.94	41.50	40.08	40.00	39.47
Conductivity (S/m)	Target	0.89	0.97	1.37	1.40	1.67

Ingredients		Simulating Tissue					
		2550 MHz Head	3300 MHz Head	3500 MHz Head	3700 MHz Head	3900 MHz Head	4200 MHz Head
Mixing Percentage							
Water		Proprietary Purchased From Speag					
Sugar							
Salt							
HEC							
Bactericide							
DGBE							
Dielectric Constant	Target	39.07	38.16	37.93	37.70	37.47	36.55
Conductivity (S/m)	Target	1.91	2.70	2.91	3.12	3.34	3.68

5. ANSI/IEEE C95.1 – 1992 RF Exposure Limits [2]

Uncontrolled Environment

Uncontrolled Environments are defined as locations where there is the exposure of individuals who have no knowledge or control of their exposure. The general population/uncontrolled exposure limits are applicable to situations in which the general public may be exposed or in which persons who are exposed as a consequence of their employment may not be made fully aware of the potential for exposure or cannot exercise control over their exposure. Members of the general public would come under this category when exposure is not employment-related; for example, in the case of a wireless transmitter that exposes persons in its vicinity.

Controlled Environment

Controlled Environments are defined as locations where there is exposure that may be incurred by persons who are aware of the potential for exposure, (i.e. as a result of employment or occupation). In general, occupational/controlled exposure limits are applicable to situations in which persons are exposed as a consequence of their employment, who have been made fully aware of the potential for exposure and can exercise control over their exposure. This exposure category is also applicable when the exposure is of a transient nature due to incidental passage through a location where the exposure levels may be higher than the general population/uncontrolled limits, but the exposed person is fully aware of the potential for exposure and can exercise control over his or her exposure by leaving the area or by some other appropriate means.

Table 5.1 Human Exposure Limits

	UNCONTROLLED ENVIRONMENT General Population (W/kg) or (mW/g)	CONTROLLED ENVIROMENT Professional Population (W/kg) or (mW/g)
SPATIAL PEAK SAR ¹ Head	1.60	8.00
SPATIAL AVERAGE SAR ² Whole Body	0.08	0.40
SPATIAL PEAK SAR ³ Hands, Feet, Ankles, Wrists	4.00	20.00

¹ The Spatial Peak value of the SAR averaged over any 1 gram of tissue (defined as a tissue volume in the shape of a cube) and over the appropriate averaging time.

² The Spatial Average value of the SAR averaged over the whole body.

³ The Spatial Peak value of the SAR averaged over any 10 grams of tissue (defined as a tissue volume in the shape of a cube) and over the appropriate averaging time.

6. Measurement Uncertainty

Measurement uncertainty table is not required per KDB 865664 D01 v01 section 2.8.2 page 12. SAR measurement uncertainty analysis is required in the SAR report only when the highest measured SAR in a frequency band is ≥ 1.5 W/kg for 1-g SAR. The equivalent ratio (1.5/1.6) should be applied to extremity and occupational exposure conditions. The highest reported value is less than 1.5 W/kg. Therefore, the measurement uncertainty table is not required.

7. System Validation

Tissue Verification

Table 7.1 Measured Tissue Parameters

		750 MHz Head		900 MHz Head		1750 MHz Head	
Date(s)		Jun. 12, 2023		Jun. 13, 2023		Jun. 15, 2023	
Liquid Temperature (°C)	20.0	Target	Measured	Target	Measured	Target	Measured
Dielectric Constant: ϵ		41.94	40.97	41.50	40.96	40.08	39.06
Conductivity: σ		0.89	0.93	0.97	1.01	1.37	1.39
		1900 MHz Head		2550 MHz Head		3300 MHz Head	
Date(s)		Jun. 16, 2023		Jun. 19, 2023		Jun. 20, 2023	
Liquid Temperature (°C)	20.0	Target	Measured	Target	Measured	Target	Measured
Dielectric Constant: ϵ		40.00	39.55	39.07	38.74	38.16	37.59
Conductivity: σ		1.40	1.42	1.91	1.92	2.70	2.73
		3500 MHz Head		3700 MHz Head		3900 MHz Head	
Date(s)		Jun. 20, 2023		Jun. 20, 2023		Jun. 20, 2023	
Liquid Temperature (°C)	20.0	Target	Measured	Target	Measured	Target	Measured
Dielectric Constant: ϵ		37.93	37.36	37.70	37.13	37.47	36.90
Conductivity: σ		2.91	2.94	3.12	3.15	3.34	3.37
		4200 MHz Head					
Date(s)		Jun. 20, 2023					
Liquid Temperature (°C)	20.0	Target	Measured				
Dielectric Constant: ϵ		37.12	36.55				
Conductivity: σ		3.65	3.68				

See Appendix A for data printout.

Test System Verification

Prior to assessment, the system is verified to the $\pm 10\%$ of the specifications at the test frequency by using the system kit. Power is normalized to 1 watt. (Graphic Plots Attached)

Table 7.2 System Dipole Validation Target & Measured

	Test Frequency	Targeted SAR _{1g} (W/kg)	Measure SAR _{1g} (W/kg)	Tissue Used for Verification	Deviation (%)	Plot Number
12-Jun-2023	750 MHz	8.57	8.66	Head	+ 1.05	1
13-Jun-2023	900 MHz	11.20	11.60	Head	+ 3.57	2
15-Jun-2023	1750 MHz	37.70	38.10	Head	+ 1.06	3
16-Jun-2023	1900 MHz	40.40	41.20	Head	+ 1.98	4
19-Jun-2023	2550 MHz	55.30	56.60	Head	+ 2.35	5
20-Jun-2023	3300 MHz	64.90	65.90	Head	+ 1.54	6
20-Jun-2023	3500 MHz	67.00	68.20	Head	+ 1.79	7
20-Jun-2023	3700 MHz	68.30	69.80	Head	+ 2.20	8
20-Jun-2023	3900 MHz	69.90	70.90	Head	+ 1.43	9
20-Jun-2023	4200 MHz	66.30	67.40	Head	+ 1.66	10

See Appendix A for data plots.

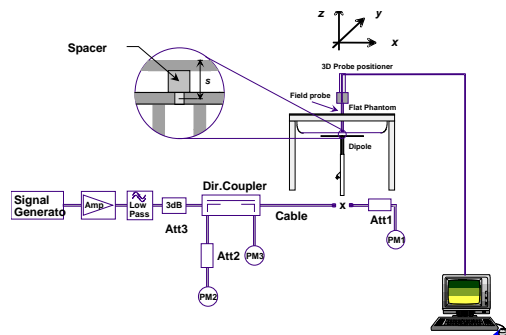


Figure 7.1 Dipole Validation Test Setup

8. SAR Test Data Summary

See Measurement Result Data Pages

See Appendix B for SAR Test Data Plots.
See Appendix C for SAR Test Setup Photos.

Procedures Used To Establish Test Signal

The device was either placed into simulated transmit mode using the manufacturer’s test codes or the actual transmission is activated through a base station simulator or similar equipment. See data pages for actual procedure used in measurement.

Device Test Condition

In order to verify that the device was tested at full power, conducted output power measurements were performed before and after each SAR measurement to confirm the output power unless otherwise noted. If a conducted power deviation of more than 5% occurred, the test was repeated. The power drift of each test is measured at the start of the test and again at the end of the test. The drift percentage is calculated by the formula $((\text{end}/\text{start})-1)*100$ and rounded to three decimal places. The drift percentage is calculated into the resultant SAR value on the data sheet for each test.

Required Test Positions						
Antenna	Top	Back	Front	Left	Right	Bottom
Ant M1	No	Yes	No	No	No	No
Ant M3	No	Yes	No	No	No	No
Ant M2	No	Yes	No	No	No	No
Ant M4	No	Yes	No	No	No	No
Ant M5	No	Yes	No	No	No	No
Ant M6	No	Yes	No	No	No	No
WiFi W1	No	Yes	No	No	No	No
WiFi W2	No	Yes	No	No	No	No

All testing was conducted with a 15 mm gap. The 15 mm gap was used to simulate the case the device is carried in when in use by the user. The 15 mm gap is the thickness of the backpack.

The Bluetooth testing was excluded from SAR testing due to the low power of the transmitter. The maximum power of the Bluetooth transmitter is 4 dBm (2.5 mW).

For the FCC, the exclusion was based on the calculation in KDB447498 v06 section 4.3.1 a). The following is the formula for the Bluetooth transmitter.

$$[(2.5 \text{ mW})/(5 \text{ mm})]^{\sqrt{2}} = 0.79 \text{ which is equal to or less than } 3.0$$

For ISED, the exclusion is based on RSS-102 Issue 6 section 6.3 table 11. Therefore, for a separation distance of 5 mm in the table, the exclusion limit is 3 mW. The Bluetooth transmitter have a maximum transmit power of 2.5 mW which is below the 3 mW threshold. Therefore, the Bluetooth transmitter is excluded from SAR testing.

FR1 Conducted Power

GENERAL NOTE:

1. NR implementation of n2, n5, n66, n71 and n77 is limited to EN-DC operations only (NSA), with LTE Bands 2/5/7/12/13/25/66/41 acting as anchor bands, SAR tests for NR Bands and LTE Anchors Bands were performed separately due to limitations in SAR probe calibration factors. the detail EN-DC combination are included.
2. 5G NR support SCS 15KHz / 30KHz, DFT-s/CP-OFDM, Pi/2 BPSK/QPSK/16QAM/64QAM/256QAM and supported Bandwidths
3. For 5G NR test procedure was following step similar FCC KDB 941225 D05:
 - a. For DFT-s-OFDM and CP-OFDM output power measurement reduction, according to 38.101 maximum power reduction for power class 2 and 3, the CP-OFDM mode will not higher than DFT-s-OFDM mode, therefore, similar FCC KDB 941225 D05 procedure for other modulation output power for each RB allocation configuration is > not ½ dB higher than the same configuration in DFT-s-Pi/2 BPSK and the reported SAR for the DFT-s-Pi/2 BPSK configuration is ≤ 1.45 W/kg; CP-OFDM measurement is unnecessary.
 - b. For DFT-s-OFDM output power measurement reduction, according to 38.101 maximum power reduction for power class 3, full measurement on Pi/2 BPSK/QPSK/16QAM/64QMA/256QAM with larger bandwidth, for smaller bandwidth output power also spot check 1RB 1offset configuration at Pi/2 BPSK to ensure output power will not ½ dB higher than largest supported bandwidth.
 - c. SAR testing start with the largest channel bandwidth and measure SAR for Pi/2 BPSK with 1 RB allocation, using the RB offset and required test channel combination with the highest maximum output power for RB offsets at the upper edge, middle and lower edge of each required test channel.
 - d. 50% RB allocation for Pi/2 BPSK SAR testing follows 1RB Pi/2 BPSK allocation procedure
 - e. Pi/2 BPSK with 100% RB allocation, SAR is not required when the highest maximum output power for 100 % RB allocation is less than the highest maximum output power in 50% and 1 RB allocations and the highest reported SAR for 1 RB and 50% RB allocation are ≤ 0.8 W/kg. Otherwise, SAR is measured for the highest output power channel; and if the reported SAR is > 1.45 W/kg, the remaining required test channels must also be tested.
 - f. QPSK/16QAM/64QAM/256QAM output powers are not ½ dB higher than the same configuration in Pi/2 BPSK, also reported SAR for the Pi/2 BPSK configuration is less than 1.45 W/kg, QPSK/16QAM/64QAM/256QAM SAR testing are not required.
 - g. Smaller bandwidth output power for each RB allocation configuration for this device will not ½ dB higher than the same configuration in the largest supported bandwidth, and the reported SAR for the largest supported bandwidth is ≤ 1.45 W/kg, smaller bandwidth SAR testing is not required for this device.
4. FR1 band 2/38/78 SAR test was covered by Band 25/77; according to April 2015 TCB workshop, SAR test for overlapping FR1 bands can be reduced if
 - a. the maximum output power, including tolerance, for the smaller band is ≤ the larger band to qualify for the SAR test exclusion
 - b. the channel bandwidth and other operating parameters for the smaller band are fully supported by the larger band
5. Due to test setup limitations, SAR testing for NR was performed using Factory Test Mode software to establish the connection and perform SAR with 100% duty cycle. The Qualcomm QRCT program was used to establish the connection.
6. All conducted measurements were conducted on antenna M1 and M3. For antennas M2, M4, M5 and M6, only the channel and configuration tested had the conduct power measured. See the data sheets below.

3GPP 38.101 MPR FOR EN-DC

Table 6.2.2-1 Maximum power reduction (MPR) for power class 3

Modulation		MPR (dB)		
		Edge RB allocations	Outer RB allocations	Inner RB allocations
DFT-s-OFDM	Pi/2 BPSK	≤ 3.5 ¹	≤ 1.2 ¹	≤ 0.2 ²
		≤ 0.5 ²	≤ 0.5 ²	0 ²
	QPSK	≤ 1		0
	16 QAM	≤ 2		≤ 1
	64 QAM		≤ 2.5	
CP-OFDM	256 QAM		≤ 4.5	
	QPSK	≤ 3		≤ 1.5
	16 QAM	≤ 3		≤ 2
	64 QAM		≤ 3.5	
	256 QAM		≤ 6.5	
NOTE 1: Applicable for UE operating in TDD mode with Pi/2 BPSK modulation and UE indicates support for UE capability <i>powerBoosting-pi2BPSK</i> and if the IE <i>powerBoostPi2BPSK</i> is set to 1 and 40 % or less slots in radio frame are used for UL transmission for bands n40, n41, n77, n78 and n79. The reference power of 0 dB MPR is 26 dBm.				
NOTE 2: Applicable for UE operating in FDD mode, or in TDD mode in bands other than n40, n41, n77, n78 and n79 with Pi/2 BPSK modulation and if the IE <i>powerBoostPi2BPSK</i> is set to 0 and if more than 40 % of slots in radio frame are used for UL transmission for bands n40, n41, n77, n78 and n79.				

Table 6.2.2-2 Maximum power reduction (MPR) for power class 2

Modulation		MPR (dB)		
		Edge RB allocations	Outer RB allocations	Inner RB allocations
DFT-s-OFDM	Pi/2 BPSK	≤ 3.5	≤ 0.5	0
	QPSK	≤ 3.5	≤ 1	0
	16 QAM	≤ 3.5	≤ 2	≤ 1
	64 QAM	≤ 3.5		≤ 2.5
	256 QAM		≤ 4.5	
CP-OFDM	QPSK	≤ 3.5	≤ 3	≤ 1.5
	16 QAM	≤ 3.5	≤ 3	≤ 2
	64 QAM		≤ 3.5	
	256 QAM		≤ 6.5	

Table 9.1 FR1 Full Power Measurements

<n2 Ant M1>

BW [MHz]	Modulation	RB Size	RB Offset	Power Low	Power Middle	Power High	Tune-up limit	MPR
				Ch. / Freq.	Ch. / Freq.	Ch. / Freq.	(dBm)	(dB)
				372000	376000	380000	Tune-up limit	MPR
Channel Frequency (MHz)				1860	1880	1900	(dBm)	(dB)
20	PI/2 BPSK	1	1	24.29	24.46	24.43	24.5	0.0
20	PI/2 BPSK	1	53	24.03	24.41	24.04		
20	PI/2 BPSK	1	104	24.42	24.15	24.32		
20	PI/2 BPSK	50	0	23.38	23.40	23.35	23.5	1.0
20	PI/2 BPSK	50	28	23.24	23.27	23.07		
20	PI/2 BPSK	50	56	23.05	23.21	23.11		
20	PI/2 BPSK	100	0	23.18	23.06	23.19	23.5	1.0
20	QPSK	1	1	24.45	24.07	24.32	24.5	0.0
20	QPSK	1	53	24.03	24.00	24.25		
20	QPSK	1	104	24.43	24.39	24.20		
20	QPSK	50	0	23.44	23.28	23.19	23.5	1.0
20	QPSK	50	28	23.20	23.30	23.41		
20	QPSK	50	56	23.39	23.38	23.26		
20	QPSK	100	0	23.26	23.27	23.14	23.5	1.0
20	16QAM	1	1	24.45	24.34	24.17	24.5	0.0
20	16QAM	1	53	24.35	24.46	24.21		
20	16QAM	1	104	24.35	24.15	24.48		
20	16QAM	50	0	23.44	23.19	23.12	23.5	1.0
20	16QAM	50	28	23.41	23.02	23.33		
20	16QAM	50	56	23.19	23.43	23.36		
20	16QAM	100	0	23.10	23.39	23.22	23.5	1.0
20	64QAM	1	1	24.27	24.20	24.30	24.5	0.0
20	64QAM	1	53	24.03	24.00	24.32		
20	64QAM	1	104	24.00	24.06	24.37		
20	64QAM	50	0	23.47	23.37	23.09	23.5	1.0
20	64QAM	50	28	23.11	23.50	23.43		
20	64QAM	50	56	23.11	23.09	23.13		
20	64QAM	100	0	23.39	23.23	23.06	23.5	1.0
20	256QAM	1	1	24.31	24.12	24.19	24.5	0.0
20	256QAM	1	53	24.20	24.49	24.46		
20	256QAM	1	104	24.15	24.08	24.10		
20	256QAM	50	0	23.33	23.43	23.19	23.5	1.0
20	256QAM	50	28	23.29	23.03	23.15		
20	256QAM	50	56	23.05	23.46	23.33		
20	256QAM	100	0	23.42	23.15	23.22	23.5	1.0
Channel Frequency (MHz)				371500	376000	380500	Tune-up limit	MPR
Channel Frequency (MHz)				1857.5	1880	1902.5	(dBm)	(dB)
15	PI/2 BPSK	1	1	24.46	24.25	24.38	24.5	0.0
Channel Frequency (MHz)				371000	376000	381000	Tune-up limit	MPR
Channel Frequency (MHz)				1855	1880	1905	(dBm)	(dB)
10	PI/2 BPSK	1	1	24.49	24.14	24.08	24.5	0.0
Channel Frequency (MHz)				370500	376000	381500	Tune-up limit	MPR
Channel Frequency (MHz)				1852.5	1880	1907.5	(dBm)	(dB)
5	PI/2 BPSK	1	1	24.18	24.09	24.06	24.5	0.0

<n2 Ant M3>

BW [MHz]	Modulation	RB Size	RB Offset	Power Low	Power Middle	Power High	Tune-up limit	MPR
				Ch. / Freq.	Ch. / Freq.	Ch. / Freq.	(dBm)	(dB)
Channel				372000	376000	380000	Tune-up limit	MPR
Frequency (MHz)				1860	1880	1900	(dBm)	(dB)
20	PI/2 BPSK	1	1	24.31	24.28	24.42	24.5	0.0
20	PI/2 BPSK	1	53	24.43	24.46	24.47		
20	PI/2 BPSK	1	104	24.40	24.01	24.42		
20	PI/2 BPSK	50	0	23.10	23.21	23.33	23.5	1.0
20	PI/2 BPSK	50	28	23.18	23.36	23.20		
20	PI/2 BPSK	50	56	23.14	23.22	23.04		
20	PI/2 BPSK	100	0	23.03	23.31	23.15	23.5	1.0
20	QPSK	1	1	24.08	24.14	24.11	24.5	0.0
20	QPSK	1	53	24.01	24.28	24.45		
20	QPSK	1	104	24.00	24.06	24.30		
20	QPSK	50	0	23.39	23.12	23.25	23.5	1.0
20	QPSK	50	28	23.05	23.09	23.06		
20	QPSK	50	56	23.08	23.28	23.10		
20	QPSK	100	0	23.22	23.29	23.08	23.5	1.0
20	16QAM	1	1	24.04	24.07	24.02	24.5	0.0
20	16QAM	1	53	24.23	24.40	24.49		
20	16QAM	1	104	24.42	24.41	24.07		
20	16QAM	50	0	23.12	23.37	23.48	23.5	1.0
20	16QAM	50	28	23.14	23.11	23.36		
20	16QAM	50	56	23.46	23.26	23.05		
20	16QAM	100	0	23.23	23.06	23.03	23.5	1.0
20	64QAM	1	1	24.35	24.14	24.00	24.5	0.0
20	64QAM	1	53	24.46	24.23	24.34		
20	64QAM	1	104	24.24	24.19	24.13		
20	64QAM	50	0	23.17	23.03	23.02	23.5	1.0
20	64QAM	50	28	23.33	23.17	23.18		
20	64QAM	50	56	23.43	23.09	23.26		
20	64QAM	100	0	23.02	23.06	23.22	23.5	1.0
20	256QAM	1	1	24.02	24.45	24.24	24.5	0.0
20	256QAM	1	53	24.04	24.44	24.34		
20	256QAM	1	104	24.43	24.33	24.23		
20	256QAM	50	0	23.02	23.17	23.06	23.5	1.0
20	256QAM	50	28	23.20	23.10	23.19		
20	256QAM	50	56	23.15	23.04	23.48		
20	256QAM	100	0	23.47	23.19	23.48	23.5	1.0
Channel				371500	376000	380500	Tune-up limit	MPR
Frequency (MHz)				1857.5	1880	1902.5	(dBm)	(dB)
15	PI/2 BPSK	1	1	24.44	24.02	24.17	24.5	0.0
Channel				371000	376000	381000	Tune-up limit	MPR
Frequency (MHz)				1855	1880	1905	(dBm)	(dB)
10	PI/2 BPSK	1	1	24.38	24.24	24.44	24.5	0.0
Channel				370500	376000	381500	Tune-up limit	MPR
Frequency (MHz)				1852.5	1880	1907.5	(dBm)	(dB)
5	PI/2 BPSK	1	1	24.31	24.00	24.45	24.5	0.0

<n5 Ant M1>

BW [MHz]	Modulation	RB Size	RB Offset	Power Low	Power Middle	Power High	Tune-up limit	MPR
				Ch. / Freq.	Ch. / Freq.	Ch. / Freq.	(dBm)	(dB)
Channel				166800	167300	167300	Tune-up limit	MPR
Frequency (MHz)				834	836.5	839	(dBm)	(dB)
20	PI/2 BPSK	1	1	24.41	24.37	24.04	24.5	0.0
20	PI/2 BPSK	1	53	24.50	24.26	24.07		
20	PI/2 BPSK	1	104	24.17	24.09	24.04		
20	PI/2 BPSK	50	0	23.13	23.02	23.10	23.5	1.0
20	PI/2 BPSK	50	28	23.18	23.05	23.35		
20	PI/2 BPSK	50	56	23.03	23.48	23.38		
20	PI/2 BPSK	100	0	23.03	23.30	23.48	23.5	1.0
20	QPSK	1	1	24.03	24.45	24.32	24.5	0.0
20	QPSK	1	53	24.37	24.13	24.11		
20	QPSK	1	104	24.28	24.43	24.39		
20	QPSK	50	0	23.32	23.41	23.34	23.5	1.0
20	QPSK	50	28	23.32	23.19	23.25		
20	QPSK	50	56	23.00	23.04	23.07		
20	QPSK	100	0	23.09	23.22	23.17	23.5	1.0
20	16QAM	1	1	24.06	24.19	24.07	24.5	0.0
20	16QAM	1	53	24.17	24.30	24.12		
20	16QAM	1	104	24.15	24.06	24.36		
20	16QAM	50	0	23.31	23.46	23.05	23.5	1.0
20	16QAM	50	28	23.04	23.03	23.45		
20	16QAM	50	56	23.31	23.04	23.38		
20	16QAM	100	0	23.35	23.45	23.43	23.5	1.0
20	64QAM	1	1	24.02	24.19	24.37	24.5	0.0
20	64QAM	1	53	24.00	24.46	24.18		
20	64QAM	1	104	24.07	24.46	24.06		
20	64QAM	50	0	23.26	23.09	23.38	23.5	1.0
20	64QAM	50	28	23.11	23.09	23.05		
20	64QAM	50	56	23.13	23.49	23.15		
20	64QAM	100	0	23.36	23.48	23.47	23.5	1.0
20	256QAM	1	1	24.32	24.02	24.04	24.5	0.0
20	256QAM	1	53	24.17	24.30	24.14		
20	256QAM	1	104	24.31	24.32	24.42		
20	256QAM	50	0	23.40	23.20	23.15	23.5	1.0
20	256QAM	50	28	23.04	23.29	23.07		
20	256QAM	50	56	23.07	23.27	23.31		
20	256QAM	100	0	23.17	23.21	23.11	23.5	1.0
Channel				166300	167300	167800	Tune-up limit	MPR
Frequency (MHz)				831.5	836.5	841.5	(dBm)	(dB)
15	PI/2 BPSK	1	1	24.39	24.19	24.03	24.5	0.0
Channel				165800	167300	168200	Tune-up limit	MPR
Frequency (MHz)				829	836.5	844	(dBm)	(dB)
10	PI/2 BPSK	1	1	24.16	24.42	24.14	24.5	0.0
Channel				165300	167300	168700	Tune-up limit	MPR
Frequency (MHz)				826.5	836.5	846.5	(dBm)	(dB)
5	PI/2 BPSK	1	1	24.33	24.15	24.40	24.5	0.0

<n5 Ant M3>

BW [MHz]	Modulation	RB Size	RB Offset	Power Low	Power Middle	Power High	Tune-up limit	MPR
				Ch. / Freq.	Ch. / Freq.	Ch. / Freq.	(dBm)	(dB)
Channel				166800	167300	167300	Tune-up limit	MPR
Frequency (MHz)				834	836.5	839	(dBm)	(dB)
20	PI/2 BPSK	1	1	24.41	24.13	24.04	24.5	0.0
20	PI/2 BPSK	1	53	24.06	24.42	24.19		
20	PI/2 BPSK	1	104	24.17	24.39	24.18		
20	PI/2 BPSK	50	0	23.05	23.36	23.35	23.5	1.0
20	PI/2 BPSK	50	28	23.10	23.42	23.24		
20	PI/2 BPSK	50	56	23.22	23.12	23.25		
20	PI/2 BPSK	100	0	23.30	23.01	23.28	23.5	1.0
20	QPSK	1	1	24.16	24.24	24.42	24.5	0.0
20	QPSK	1	53	24.07	24.43	24.47		
20	QPSK	1	104	24.40	24.21	24.06		
20	QPSK	50	0	23.36	23.07	23.01	23.5	1.0
20	QPSK	50	28	23.42	23.05	23.19		
20	QPSK	50	56	23.47	23.08	23.02		
20	QPSK	100	0	23.00	23.08	23.48	23.5	1.0
20	16QAM	1	1	24.50	24.46	24.02	24.5	0.0
20	16QAM	1	53	24.15	24.38	24.48		
20	16QAM	1	104	24.36	24.30	24.30		
20	16QAM	50	0	23.07	23.05	23.10	23.5	1.0
20	16QAM	50	28	23.26	23.11	23.45		
20	16QAM	50	56	23.11	23.38	23.28		
20	16QAM	100	0	23.35	23.47	23.02	23.5	1.0
20	64QAM	1	1	24.32	24.40	24.43	24.5	0.0
20	64QAM	1	53	24.31	24.19	24.30		
20	64QAM	1	104	24.03	24.03	24.25		
20	64QAM	50	0	23.32	23.25	23.26	23.5	1.0
20	64QAM	50	28	23.34	23.25	23.11		
20	64QAM	50	56	23.32	23.32	23.27		
20	64QAM	100	0	23.48	23.13	23.44	23.5	1.0
20	256QAM	1	1	24.28	24.20	24.32	24.5	0.0
20	256QAM	1	53	24.07	24.49	24.31		
20	256QAM	1	104	24.49	24.27	24.24		
20	256QAM	50	0	23.22	23.26	23.08	23.5	1.0
20	256QAM	50	28	23.24	23.35	23.19		
20	256QAM	50	56	23.02	23.45	23.11		
20	256QAM	100	0	23.07	23.02	23.19	23.5	1.0
Channel				166300	167300	167800	Tune-up limit	MPR
Frequency (MHz)				831.5	836.5	841.5	(dBm)	(dB)
15	PI/2 BPSK	1	1	24.05	24.34	24.27	24.5	0.0
Channel				165800	167300	168200	Tune-up limit	MPR
Frequency (MHz)				829	836.5	844	(dBm)	(dB)
10	PI/2 BPSK	1	1	24.15	24.11	24.12	24.5	0.0
Channel				165300	167300	168700	Tune-up limit	MPR
Frequency (MHz)				826.5	836.5	846.5	(dBm)	(dB)
5	PI/2 BPSK	1	1	24.12	24.35	24.23	24.5	0.0

<n7 Ant M1>

BW [MHz]	Modulation	RB Size	RB Offset	Power Low	Power Middle	Power High	Tune-up limit	MPR
				Ch. / Freq.	Ch. / Freq.	Ch. / Freq.	(dBm)	(dB)
Channel				502000	507000	512000	Tune-up limit	MPR
Frequency (MHz)				2510	2535	2560	(dBm)	(dB)
20	PI/2 BPSK	1	1	24.19	24.35	24.40	24.5	0.0
20	PI/2 BPSK	1	53	24.28	24.07	24.26		
20	PI/2 BPSK	1	104	24.45	24.24	24.24		
20	PI/2 BPSK	50	0	23.26	23.27	23.19	23.5	1.0
20	PI/2 BPSK	50	28	23.45	23.12	23.01		
20	PI/2 BPSK	50	56	23.12	23.12	23.13		
20	PI/2 BPSK	100	0	23.16	23.31	23.43	23.5	1.0
20	QPSK	1	1	24.24	24.15	24.47	24.5	0.0
20	QPSK	1	53	24.11	24.01	24.39		
20	QPSK	1	104	24.29	24.16	24.36		
20	QPSK	50	0	23.02	23.35	23.33	23.5	1.0
20	QPSK	50	28	23.37	23.08	23.24		
20	QPSK	50	56	23.48	23.08	23.26		
20	QPSK	100	0	23.29	23.43	23.17	23.5	1.0
20	16QAM	1	1	24.06	24.16	24.36	24.5	0.0
20	16QAM	1	53	24.04	24.24	24.07		
20	16QAM	1	104	24.05	24.03	24.26		
20	16QAM	50	0	23.06	23.06	23.43	23.5	1.0
20	16QAM	50	28	23.48	23.40	23.47		
20	16QAM	50	56	23.10	23.40	23.35		
20	16QAM	100	0	23.24	23.34	23.10	23.5	1.0
20	64QAM	1	1	24.26	24.23	24.40	24.5	0.0
20	64QAM	1	53	24.31	24.15	24.21		
20	64QAM	1	104	24.26	24.14	24.05		
20	64QAM	50	0	23.43	23.13	23.07	23.5	1.0
20	64QAM	50	28	23.45	23.12	23.19		
20	64QAM	50	56	23.23	23.33	23.10		
20	64QAM	100	0	23.46	23.23	23.23	23.5	1.0
20	256QAM	1	1	24.29	24.18	24.17	24.5	0.0
20	256QAM	1	53	24.32	24.37	24.37		
20	256QAM	1	104	24.02	24.06	24.21		
20	256QAM	50	0	23.19	23.38	23.12	23.5	1.0
20	256QAM	50	28	23.18	23.32	23.34		
20	256QAM	50	56	23.32	23.45	23.23		
20	256QAM	100	0	23.33	23.34	23.38	23.5	1.0
Channel				501500	507000	511500	Tune-up limit	MPR
Frequency (MHz)				2507.5	2535	2562.5	(dBm)	(dB)
15	PI/2 BPSK	1	1	24.26	24.37	24.09	24.5	0.0
Channel				501000	507000	511000	Tune-up limit	MPR
Frequency (MHz)				2505	2535	2565	(dBm)	(dB)
10	PI/2 BPSK	1	1	24.07	24.10	24.37	24.5	0.0
Channel				500500	507000	510500	Tune-up limit	MPR
Frequency (MHz)				2502.5	2535	2567.5	(dBm)	(dB)
5	PI/2 BPSK	1	1	24.47	24.07	24.05	24.5	0.0

<n7 Ant M3>

BW [MHz]	Modulation	RB Size	RB Offset	Power Low	Power Middle	Power High	Tune-up limit	MPR
				Ch. / Freq.	Ch. / Freq.	Ch. / Freq.	(dBm)	(dB)
Channel				502000	507000	512000	Tune-up limit	MPR
Frequency (MHz)				2510	2535	2560	(dBm)	(dB)
20	PI/2 BPSK	1	1	24.07	24.07	24.21	24.5	0.0
20	PI/2 BPSK	1	53	24.20	24.38	24.01		
20	PI/2 BPSK	1	104	24.43	24.17	24.23		
20	PI/2 BPSK	50	0	23.15	23.15	23.21	23.5	1.0
20	PI/2 BPSK	50	28	23.40	23.38	23.01		
20	PI/2 BPSK	50	56	23.07	23.13	23.11		
20	PI/2 BPSK	100	0	23.35	23.09	23.26	23.5	1.0
20	QPSK	1	1	24.48	24.08	24.27	24.5	0.0
20	QPSK	1	53	24.13	24.06	24.20		
20	QPSK	1	104	24.06	24.26	24.21		
20	QPSK	50	0	23.44	23.20	23.39	23.5	1.0
20	QPSK	50	28	23.42	23.31	23.22		
20	QPSK	50	56	23.15	23.28	23.23		
20	QPSK	100	0	23.15	23.26	23.33	23.5	1.0
20	16QAM	1	1	24.20	24.29	24.06	24.5	0.0
20	16QAM	1	53	24.33	24.49	24.07		
20	16QAM	1	104	24.41	24.38	24.21		
20	16QAM	50	0	23.03	23.04	23.29	23.5	1.0
20	16QAM	50	28	23.04	23.14	23.23		
20	16QAM	50	56	23.11	23.09	23.11		
20	16QAM	100	0	23.11	23.39	23.20	23.5	1.0
20	64QAM	1	1	24.10	24.30	24.28	24.5	0.0
20	64QAM	1	53	24.10	24.17	24.28		
20	64QAM	1	104	24.07	24.12	24.00		
20	64QAM	50	0	23.06	23.35	23.41	23.5	1.0
20	64QAM	50	28	23.29	23.24	23.34		
20	64QAM	50	56	23.47	23.47	23.13		
20	64QAM	100	0	23.31	23.33	23.47	23.5	1.0
20	256QAM	1	1	24.22	24.37	24.03	24.5	0.0
20	256QAM	1	53	24.10	24.47	24.43		
20	256QAM	1	104	24.32	24.48	24.13		
20	256QAM	50	0	23.30	23.39	23.20	23.5	1.0
20	256QAM	50	28	23.05	23.07	23.49		
20	256QAM	50	56	23.27	23.37	23.50		
20	256QAM	100	0	23.43	23.13	23.10	23.5	1.0
Channel				501500	507000	511500	Tune-up limit	MPR
Frequency (MHz)				2507.5	2535	2562.5	(dBm)	(dB)
15	PI/2 BPSK	1	1	24.11	24.13	24.17	24.5	0.0
Channel				501000	507000	511000	Tune-up limit	MPR
Frequency (MHz)				2505	2535	2565	(dBm)	(dB)
10	PI/2 BPSK	1	1	24.31	24.09	24.40	24.5	0.0
Channel				500500	507000	510500	Tune-up limit	MPR
Frequency (MHz)				2502.5	2535	2567.5	(dBm)	(dB)
5	PI/2 BPSK	1	1	24.22	24.31	24.13	24.5	0.0

<n12 Ant M1>

BW [MHz]	Modulation	RB Size	RB Offset	Power Low	Power Middle	Power High	Tune-up limit	MPR
				Ch. / Freq.	Ch. / Freq.	Ch. / Freq.	(dBm)	(dB)
				141300	141500	141700	Tune-up limit	MPR
				706.5	707.5	708.5	(dBm)	(dB)
15	PI/2 BPSK	1	1	24.08	24.30	24.29	24.5	0.0
15	PI/2 BPSK	1	40	24.20	24.23	24.27		
15	PI/2 BPSK	1	78	24.45	24.03	24.48		
15	PI/2 BPSK	37	0	23.16	23.48	23.40	23.5	1.0
15	PI/2 BPSK	37	21	23.23	23.15	23.03		
15	PI/2 BPSK	37	42	23.02	23.03	23.22		
15	PI/2 BPSK	75	0	23.45	23.13	23.42	23.5	1.0
15	QPSK	1	1	24.42	24.46	24.12	24.5	0.0
15	QPSK	1	40	24.12	24.36	24.33		
15	QPSK	1	78	24.05	24.06	24.01		
15	QPSK	37	0	23.41	23.27	23.45	23.5	1.0
15	QPSK	37	21	23.37	23.16	23.06		
15	QPSK	37	42	23.14	23.27	23.31		
15	QPSK	75	0	23.32	23.14	23.33	23.5	1.0
15	16QAM	1	1	24.05	24.12	24.06	24.5	0.0
15	16QAM	1	40	24.43	24.16	24.38		
15	16QAM	1	78	24.47	24.22	24.44		
15	16QAM	37	0	23.05	23.42	23.44	23.5	1.0
15	16QAM	37	21	23.11	23.21	23.06		
15	16QAM	37	42	23.09	23.06	23.42		
15	16QAM	75	0	23.10	23.43	23.28	23.5	1.0
15	64QAM	1	1	24.29	24.08	24.12	24.5	0.0
15	64QAM	1	40	24.30	24.43	24.03		
15	64QAM	1	78	24.01	24.24	24.00		
15	64QAM	37	0	23.01	23.45	23.13	23.5	1.0
15	64QAM	37	21	23.36	23.02	23.12		
15	64QAM	37	42	23.17	23.09	23.16		
15	64QAM	75	0	23.28	23.44	23.28	23.5	1.0
15	256QAM	1	1	24.47	24.13	24.29	24.5	0.0
15	256QAM	1	40	24.18	24.27	24.36		
15	256QAM	1	78	24.27	24.33	24.26		
15	256QAM	37	0	23.10	23.46	23.37	23.5	1.0
15	256QAM	37	21	23.22	23.43	23.45		
15	256QAM	37	42	23.01	23.42	23.40		
15	256QAM	75	0	23.06	23.44	23.02	23.5	1.0
				140920	141500	142080	Tune-up limit	MPR
				704.6	707.5	710.4	(dBm)	(dB)
10	PI/2 BPSK	1	1	24.35	24.05	24.33	24.5	0.0
				140560	141500	142440	Tune-up limit	MPR
				702.8	707.5	712.2	(dBm)	(dB)
5	PI/2 BPSK	1	1	24.03	24.35	24.43	24.5	0.0

<n12 Ant M3>

BW [MHz]	Modulation	RB Size	RB Offset	Power Low	Power Middle	Power High	Tune-up limit	MPR
				Ch. / Freq.	Ch. / Freq.	Ch. / Freq.	(dBm)	(dB)
				141300	141500	141700	Tune-up limit	MPR
				706.5	707.5	708.5	(dBm)	(dB)
15	PI/2 BPSK	1	1	24.47	24.16	24.37	24.5	0.0
15	PI/2 BPSK	1	40	24.28	24.22	24.40		
15	PI/2 BPSK	1	78	24.06	24.04	24.34		
15	PI/2 BPSK	37	0	23.13	23.49	23.24	23.5	1.0
15	PI/2 BPSK	37	21	23.04	23.36	23.03		
15	PI/2 BPSK	37	42	23.20	23.08	23.10		
15	PI/2 BPSK	75	0	23.46	23.15	23.30	23.5	1.0
15	QPSK	1	1	24.24	24.40	24.27	24.5	0.0
15	QPSK	1	40	24.07	24.22	24.19		
15	QPSK	1	78	24.26	24.22	24.18		
15	QPSK	37	0	23.44	23.07	23.41	23.5	1.0
15	QPSK	37	21	23.33	23.37	23.06		
15	QPSK	37	42	23.15	23.16	23.48		
15	QPSK	75	0	23.11	23.03	23.24	23.5	1.0
15	16QAM	1	1	24.43	24.24	24.22	24.5	0.0
15	16QAM	1	40	24.08	24.27	24.46		
15	16QAM	1	78	24.23	24.09	24.50		
15	16QAM	37	0	23.41	23.40	23.40	23.5	1.0
15	16QAM	37	21	23.40	23.35	23.16		
15	16QAM	37	42	23.19	23.22	23.44		
15	16QAM	75	0	23.36	23.09	23.07	23.5	1.0
15	64QAM	1	1	24.03	24.38	24.11	24.5	0.0
15	64QAM	1	40	24.23	24.11	24.14		
15	64QAM	1	78	24.15	24.12	24.32		
15	64QAM	37	0	23.01	23.01	23.33	23.5	1.0
15	64QAM	37	21	23.35	23.46	23.16		
15	64QAM	37	42	23.36	23.04	23.32		
15	64QAM	75	0	23.48	23.41	23.40	23.5	1.0
15	256QAM	1	1	24.08	24.37	24.26	24.5	0.0
15	256QAM	1	40	24.48	24.18	24.11		
15	256QAM	1	78	24.45	24.41	24.22		
15	256QAM	37	0	23.08	23.08	23.42	23.5	1.0
15	256QAM	37	21	23.27	23.20	23.43		
15	256QAM	37	42	23.18	23.45	23.43		
15	256QAM	75	0	23.07	23.10	23.30	23.5	1.0
				140920	141500	142080	Tune-up limit	MPR
				704.6	707.5	710.4	(dBm)	(dB)
10	PI/2 BPSK	1	1	24.40	24.35	24.26	24.5	0.0
				140560	141500	142440	Tune-up limit	MPR
				702.8	707.5	712.2	(dBm)	(dB)
5	PI/2 BPSK	1	1	24.46	24.31	24.47	24.5	0.0

<n25 Ant M1>

BW [MHz]	Modulation	RB Size	RB Offset	Power Low	Power Middle	Power High	Tune-up limit	MPR
				Ch. / Freq.	Ch. / Freq.	Ch. / Freq.	(dBm)	(dB)
Channel				372000	376500	381000	Tune-up limit	MPR
Frequency (MHz)				1860	1882.5	1905	(dBm)	(dB)
20	PI/2 BPSK	1	1	24.16	24.35	24.46	24.5	0.0
20	PI/2 BPSK	1	53	24.44	24.46	24.10		
20	PI/2 BPSK	1	104	24.12	24.40	24.09		
20	PI/2 BPSK	50	0	23.42	23.23	23.17	23.5	1.0
20	PI/2 BPSK	50	28	23.23	23.17	23.34		
20	PI/2 BPSK	50	56	23.28	23.10	23.05		
20	PI/2 BPSK	100	0	23.20	23.10	23.50	23.5	1.0
20	QPSK	1	1	24.17	24.16	24.21	24.5	0.0
20	QPSK	1	53	24.34	24.28	24.24		
20	QPSK	1	104	24.05	24.44	24.04		
20	QPSK	50	0	23.37	23.13	23.26	23.5	1.0
20	QPSK	50	28	23.38	23.42	23.43		
20	QPSK	50	56	23.42	23.33	23.24		
20	QPSK	100	0	23.39	23.44	23.21	23.5	1.0
20	16QAM	1	1	24.01	24.44	24.30	24.5	0.0
20	16QAM	1	53	24.24	24.30	24.43		
20	16QAM	1	104	24.10	24.32	24.45		
20	16QAM	50	0	23.05	23.15	23.22	23.5	1.0
20	16QAM	50	28	23.20	23.36	23.37		
20	16QAM	50	56	23.29	23.47	23.08		
20	16QAM	100	0	23.05	23.45	23.23	23.5	1.0
20	64QAM	1	1	24.33	24.17	24.17	24.5	0.0
20	64QAM	1	53	24.23	24.18	24.16		
20	64QAM	1	104	24.34	24.16	24.03		
20	64QAM	50	0	23.24	23.19	23.15	23.5	1.0
20	64QAM	50	28	23.02	23.09	23.41		
20	64QAM	50	56	23.06	23.48	23.00		
20	64QAM	100	0	23.28	23.20	23.49	23.5	1.0
20	256QAM	1	1	24.10	24.29	24.01	24.5	0.0
20	256QAM	1	53	24.24	24.04	24.24		
20	256QAM	1	104	24.07	24.39	24.03		
20	256QAM	50	0	23.26	23.47	23.05	23.5	1.0
20	256QAM	50	28	23.31	23.28	23.00		
20	256QAM	50	56	23.34	23.05	23.45		
20	256QAM	100	0	23.04	23.30	23.04	23.5	1.0
Channel				371500	376500	381500	Tune-up limit	MPR
Frequency (MHz)				1857.5	1882.5	1907.5	(dBm)	(dB)
15	PI/2 BPSK	1	1	24.48	24.17	24.36	24.5	0.0
Channel				371000	376500	382000	Tune-up limit	MPR
Frequency (MHz)				1855	1882.5	1910	(dBm)	(dB)
10	PI/2 BPSK	1	1	24.29	24.13	24.17	24.5	0.0
Channel				370500	376500	382500	Tune-up limit	MPR
Frequency (MHz)				1852.5	1882.5	1912.5	(dBm)	(dB)
5	PI/2 BPSK	1	1	24.18	24.08	24.46	24.5	0.0

<n25 Ant M3>

BW [MHz]	Modulation	RB Size	RB Offset	Power Low	Power Middle	Power High	Tune-up limit	MPR
				Ch. / Freq.	Ch. / Freq.	Ch. / Freq.	(dBm)	(dB)
Channel				372000	376500	381000	Tune-up limit	MPR
Frequency (MHz)				1860	1882.5	1905	(dBm)	(dB)
20	PI/2 BPSK	1	1	24.39	24.46	24.28	24.5	0.0
20	PI/2 BPSK	1	53	24.30	24.41	24.01		
20	PI/2 BPSK	1	104	24.20	24.03	24.24		
20	PI/2 BPSK	50	0	23.36	23.07	23.02	23.5	1.0
20	PI/2 BPSK	50	28	23.20	23.02	23.14		
20	PI/2 BPSK	50	56	23.09	23.37	23.06		
20	PI/2 BPSK	100	0	23.50	23.35	23.04	23.5	1.0
20	QPSK	1	1	24.27	24.46	24.30	24.5	0.0
20	QPSK	1	53	24.31	24.14	24.42		
20	QPSK	1	104	24.01	24.05	24.48		
20	QPSK	50	0	23.03	23.19	23.25	23.5	1.0
20	QPSK	50	28	23.44	23.40	23.50		
20	QPSK	50	56	23.41	23.45	23.37		
20	QPSK	100	0	23.44	23.36	23.26	23.5	1.0
20	16QAM	1	1	24.02	24.45	24.10	24.5	0.0
20	16QAM	1	53	24.46	24.06	24.39		
20	16QAM	1	104	24.41	24.31	24.03		
20	16QAM	50	0	23.48	23.03	23.39	23.5	1.0
20	16QAM	50	28	23.38	23.19	23.11		
20	16QAM	50	56	23.26	23.27	23.46		
20	16QAM	100	0	23.10	23.17	23.38	23.5	1.0
20	64QAM	1	1	24.19	24.37	24.22	24.5	0.0
20	64QAM	1	53	24.39	24.21	24.26		
20	64QAM	1	104	24.42	24.32	24.38		
20	64QAM	50	0	23.49	23.23	23.48	23.5	1.0
20	64QAM	50	28	23.41	23.39	23.28		
20	64QAM	50	56	23.38	23.31	23.42		
20	64QAM	100	0	23.17	23.38	23.06	23.5	1.0
20	256QAM	1	1	24.45	24.32	24.41	24.5	0.0
20	256QAM	1	53	24.19	24.24	24.39		
20	256QAM	1	104	24.14	24.38	24.40		
20	256QAM	50	0	23.22	23.22	23.44	23.5	1.0
20	256QAM	50	28	23.30	23.42	23.33		
20	256QAM	50	56	23.04	23.27	23.38		
20	256QAM	100	0	23.21	23.47	23.07	23.5	1.0
Channel				371500	376500	381500	Tune-up limit	MPR
Frequency (MHz)				1857.5	1882.5	1907.5	(dBm)	(dB)
15	PI/2 BPSK	1	1	24.06	24.15	24.04	24.5	0.0
Channel				371000	376500	382000	Tune-up limit	MPR
Frequency (MHz)				1855	1882.5	1910	(dBm)	(dB)
10	PI/2 BPSK	1	1	24.27	24.00	24.01	24.5	0.0
Channel				370500	376500	382500	Tune-up limit	MPR
Frequency (MHz)				1852.5	1882.5	1912.5	(dBm)	(dB)
5	PI/2 BPSK	1	1	24.35	24.42	24.33	24.5	0.0

<n38 Ant M1>

BW [MHz]	Modulation	RB Size	RB Offset	Power Low	Power Middle	Power High	Tune-up limit	MPR
				Ch. / Freq.	Ch. / Freq.	Ch. / Freq.	(dBm)	(dB)
Channel				516000	519000	522000	Tune-up limit	MPR
Frequency (MHz)				2580	2595	2610	(dBm)	(dB)
20	PI/2 BPSK	1	1	24.01	24.09	24.24	24.5	0.0
20	PI/2 BPSK	1	53	24.33	24.40	24.38		
20	PI/2 BPSK	1	104	24.34	24.01	24.37		
20	PI/2 BPSK	50	0	23.23	23.25	23.28	23.5	1.0
20	PI/2 BPSK	50	28	23.20	23.18	23.18		
20	PI/2 BPSK	50	56	23.08	23.07	23.37		
20	PI/2 BPSK	100	0	23.16	23.36	23.43	23.5	1.0
20	QPSK	1	1	24.21	24.45	24.49	24.5	0.0
20	QPSK	1	53	24.18	24.09	24.17		
20	QPSK	1	104	24.04	24.05	24.29		
20	QPSK	50	0	23.19	23.05	23.25	23.5	1.0
20	QPSK	50	28	23.24	23.45	23.09		
20	QPSK	50	56	23.38	23.12	23.25		
20	QPSK	100	0	23.01	23.16	23.06	23.5	1.0
20	16QAM	1	1	24.13	24.19	24.15	24.5	0.0
20	16QAM	1	53	24.14	24.09	24.32		
20	16QAM	1	104	24.05	24.01	24.46		
20	16QAM	50	0	23.43	23.35	23.33	23.5	1.0
20	16QAM	50	28	23.25	23.27	23.48		
20	16QAM	50	56	23.12	23.35	23.31		
20	16QAM	100	0	23.34	23.35	23.34	23.5	1.0
20	64QAM	1	1	24.07	24.23	24.21	24.5	0.0
20	64QAM	1	53	24.01	24.07	24.13		
20	64QAM	1	104	24.49	24.27	24.10		
20	64QAM	50	0	23.44	23.18	23.49	23.5	1.0
20	64QAM	50	28	23.22	23.18	23.28		
20	64QAM	50	56	23.48	23.08	23.43		
20	64QAM	100	0	23.26	23.24	23.18	23.5	1.0
20	256QAM	1	1	24.26	24.07	24.48	24.5	0.0
20	256QAM	1	53	24.27	24.08	24.10		
20	256QAM	1	104	24.19	24.18	24.25		
20	256QAM	50	0	23.49	23.50	23.22	23.5	1.0
20	256QAM	50	28	23.29	23.49	23.49		
20	256QAM	50	56	23.27	23.10	23.01		
20	256QAM	100	0	23.18	23.04	23.29	23.5	1.0
Channel				515500	519000	522500	Tune-up limit	MPR
Frequency (MHz)				2577.5	2595	2612.5	(dBm)	(dB)
15	PI/2 BPSK	1	1	24.20	24.13	24.44	24.5	0.0
Channel				515000	519000	523000	Tune-up limit	MPR
Frequency (MHz)				2575	2595	2615	(dBm)	(dB)
10	PI/2 BPSK	1	1	24.01	24.34	24.17	24.5	0.0
Channel				514500	519000	523500	Tune-up limit	MPR
Frequency (MHz)				2572.5	2595	2617.5	(dBm)	(dB)
5	PI/2 BPSK	1	1	24.38	24.10	24.49	24.5	0.0

<n38 Ant M3>

BW [MHz]	Modulation	RB Size	RB Offset	Power Low	Power Middle	Power High	Tune-up limit	MPR
				Ch. / Freq.	Ch. / Freq.	Ch. / Freq.	(dBm)	(dB)
Channel				516000	519000	522000	Tune-up limit	MPR
Frequency (MHz)				2580	2595	2610	(dBm)	(dB)
20	PI/2 BPSK	1	1	24.19	24.48	24.26	24.5	0.0
20	PI/2 BPSK	1	53	24.27	24.48	24.49		
20	PI/2 BPSK	1	104	24.33	24.22	24.13		
20	PI/2 BPSK	50	0	23.26	23.42	23.49	23.5	1.0
20	PI/2 BPSK	50	28	23.08	23.24	23.49		
20	PI/2 BPSK	50	56	23.01	23.42	23.42		
20	PI/2 BPSK	100	0	23.27	23.39	23.09	23.5	1.0
20	QPSK	1	1	24.23	24.09	24.30	24.5	0.0
20	QPSK	1	53	24.31	24.10	24.01		
20	QPSK	1	104	24.49	24.29	24.46		
20	QPSK	50	0	23.43	23.43	23.17	23.5	1.0
20	QPSK	50	28	23.32	23.43	23.31		
20	QPSK	50	56	23.33	23.06	23.10		
20	QPSK	100	0	23.10	23.43	23.32	23.5	1.0
20	16QAM	1	1	24.31	24.22	24.20	24.5	0.0
20	16QAM	1	53	24.44	24.13	24.44		
20	16QAM	1	104	24.23	24.37	24.07		
20	16QAM	50	0	23.31	23.38	23.34	23.5	1.0
20	16QAM	50	28	23.08	23.30	23.09		
20	16QAM	50	56	23.11	23.48	23.38		
20	16QAM	100	0	23.12	23.42	23.44	23.5	1.0
20	64QAM	1	1	24.35	24.32	24.02	24.5	0.0
20	64QAM	1	53	24.02	24.24	24.50		
20	64QAM	1	104	24.06	24.38	24.20		
20	64QAM	50	0	23.00	23.01	23.41	23.5	1.0
20	64QAM	50	28	23.41	23.14	23.25		
20	64QAM	50	56	23.04	23.32	23.13		
20	64QAM	100	0	23.34	23.49	23.15	23.5	1.0
20	256QAM	1	1	24.25	24.06	24.36	24.5	0.0
20	256QAM	1	53	24.05	24.39	24.36		
20	256QAM	1	104	24.15	24.40	24.36		
20	256QAM	50	0	23.46	23.13	23.38	23.5	1.0
20	256QAM	50	28	23.36	23.29	23.31		
20	256QAM	50	56	23.41	23.21	23.40		
20	256QAM	100	0	23.41	23.15	23.43	23.5	1.0
Channel				515500	519000	522500	Tune-up limit	MPR
Frequency (MHz)				2577.5	2595	2612.5	(dBm)	(dB)
15	PI/2 BPSK	1	1	24.49	24.23	24.24	24.5	0.0
Channel				515000	519000	523000	Tune-up limit	MPR
Frequency (MHz)				2575	2595	2615	(dBm)	(dB)
10	PI/2 BPSK	1	1	24.23	24.30	24.06	24.5	0.0
Channel				514500	519000	523500	Tune-up limit	MPR
Frequency (MHz)				2572.5	2595	2617.5	(dBm)	(dB)
5	PI/2 BPSK	1	1	24.43	24.31	24.25	24.5	0.0

<n48 Ant M1>

BW [MHz]	Modulation	RB Size	RB Offset	Power Low	Power Middle	Power High	Tune-up limit	MPR
				Ch. / Freq.	Ch. / Freq.	Ch. / Freq.	(dBm)	(dB)
Channel				637333	641666	646000	Tune-up limit	MPR
Frequency (MHz)				3560	3625	3690	(dBm)	(dB)
20	PI/2 BPSK	1	1	24.39	24.46	24.28	24.5	0.0
20	PI/2 BPSK	1	53	24.30	24.41	24.01		
20	PI/2 BPSK	1	104	24.20	24.03	24.24		
20	PI/2 BPSK	50	0	23.36	23.07	23.02	23.5	1.0
20	PI/2 BPSK	50	28	23.20	23.02	23.14		
20	PI/2 BPSK	50	56	23.09	23.37	23.06		
20	PI/2 BPSK	100	0	23.50	23.35	23.04	23.5	1.0
20	QPSK	1	1	24.27	24.46	24.30	24.5	0.0
20	QPSK	1	53	24.31	24.14	24.42		
20	QPSK	1	104	24.01	24.05	24.48		
20	QPSK	50	0	23.03	23.19	23.25	23.5	1.0
20	QPSK	50	28	23.44	23.40	23.50		
20	QPSK	50	56	23.41	23.45	23.37		
20	QPSK	100	0	23.44	23.36	23.26	23.5	1.0
20	16QAM	1	1	24.02	24.45	24.10	24.5	0.0
20	16QAM	1	53	24.46	24.06	24.39		
20	16QAM	1	104	24.41	24.31	24.03		
20	16QAM	50	0	23.48	23.03	23.39	23.5	1.0
20	16QAM	50	28	23.38	23.19	23.11		
20	16QAM	50	56	23.26	23.27	23.46		
20	16QAM	100	0	23.10	23.17	23.38	23.5	1.0
20	64QAM	1	1	24.19	24.37	24.22	24.5	0.0
20	64QAM	1	53	24.39	24.21	24.26		
20	64QAM	1	104	24.42	24.32	24.38		
20	64QAM	50	0	23.49	23.23	23.48	23.5	1.0
20	64QAM	50	28	23.41	23.39	23.28		
20	64QAM	50	56	23.38	23.31	23.42		
20	64QAM	100	0	23.17	23.38	23.06	23.5	1.0
20	256QAM	1	1	24.45	24.32	24.41	24.5	0.0
20	256QAM	1	53	24.19	24.24	24.39		
20	256QAM	1	104	24.14	24.38	24.40		
20	256QAM	50	0	23.22	23.22	23.44	23.5	1.0
20	256QAM	50	28	23.30	23.42	23.33		
20	256QAM	50	56	23.04	23.27	23.38		
20	256QAM	100	0	23.21	23.47	23.07	23.5	1.0
Channel				371500	376500	381500	Tune-up limit	MPR
Frequency (MHz)				1857.5	1882.5	1907.5	(dBm)	(dB)
15	PI/2 BPSK	1	1	24.06	24.15	24.04	24.5	0.0
Channel				371000	376500	382000	Tune-up limit	MPR
Frequency (MHz)				1855	1882.5	1910	(dBm)	(dB)
10	PI/2 BPSK	1	1	24.27	24.00	24.01	24.5	0.0
Channel				370500	376500	382500	Tune-up limit	MPR
Frequency (MHz)				1852.5	1882.5	1912.5	(dBm)	(dB)
5	PI/2 BPSK	1	1	24.35	24.42	24.33	24.5	0.0

<n48 Ant M3>

BW [MHz]	Modulation	RB Size	RB Offset	Power Low	Power Middle	Power High	Tune-up limit	MPR
				Ch. / Freq.	Ch. / Freq.	Ch. / Freq.	(dBm)	(dB)
Channel				637333	641666	646000	Tune-up limit	MPR
Frequency (MHz)				3560	3625	3690	(dBm)	(dB)
20	PI/2 BPSK	1	1	24.40	24.09	24.34	24.5	0.0
20	PI/2 BPSK	1	53	24.23	24.07	24.05		
20	PI/2 BPSK	1	104	24.33	24.22	24.38		
20	PI/2 BPSK	50	0	23.01	23.12	23.08	23.5	1.0
20	PI/2 BPSK	50	28	23.46	23.17	23.02		
20	PI/2 BPSK	50	56	23.23	23.26	23.40		
20	PI/2 BPSK	100	0	23.10	23.35	23.45	23.5	1.0
20	QPSK	1	1	24.08	24.19	24.35	24.5	0.0
20	QPSK	1	53	24.18	24.28	24.23		
20	QPSK	1	104	24.46	24.50	24.14		
20	QPSK	50	0	23.42	23.04	23.01	23.5	1.0
20	QPSK	50	28	23.27	23.00	23.15		
20	QPSK	50	56	23.33	23.04	23.41		
20	QPSK	100	0	23.50	23.41	23.35	23.5	1.0
20	16QAM	1	1	24.37	24.01	24.12	24.5	0.0
20	16QAM	1	53	24.08	24.39	24.37		
20	16QAM	1	104	24.12	24.25	24.16		
20	16QAM	50	0	23.23	23.06	23.16	23.5	1.0
20	16QAM	50	28	23.22	23.00	23.26		
20	16QAM	50	56	23.32	23.49	23.27		
20	16QAM	100	0	23.44	23.36	23.16	23.5	1.0
20	64QAM	1	1	24.23	24.09	24.24	24.5	0.0
20	64QAM	1	53	24.26	24.39	24.38		
20	64QAM	1	104	24.17	24.41	24.33		
20	64QAM	50	0	23.42	23.37	23.42	23.5	1.0
20	64QAM	50	28	23.30	23.29	23.49		
20	64QAM	50	56	23.33	23.44	23.33		
20	64QAM	100	0	23.50	23.26	23.31	23.5	1.0
20	256QAM	1	1	24.01	24.35	24.43	24.5	0.0
20	256QAM	1	53	24.19	24.36	24.21		
20	256QAM	1	104	24.20	24.37	24.30		
20	256QAM	50	0	23.27	23.21	23.10	23.5	1.0
20	256QAM	50	28	23.06	23.01	23.21		
20	256QAM	50	56	23.39	23.40	23.25		
20	256QAM	100	0	23.08	23.42	23.08	23.5	1.0
Channel				371500	376500	381500	Tune-up limit	MPR
Frequency (MHz)				1857.5	1882.5	1907.5	(dBm)	(dB)
15	PI/2 BPSK	1	1	24.32	24.45	24.10	24.5	0.0
Channel				371000	376500	382000	Tune-up limit	MPR
Frequency (MHz)				1855	1882.5	1910	(dBm)	(dB)
10	PI/2 BPSK	1	1	24.13	24.30	24.24	24.5	0.0
Channel				370500	376500	382500	Tune-up limit	MPR
Frequency (MHz)				1852.5	1882.5	1912.5	(dBm)	(dB)
5	PI/2 BPSK	1	1	24.23	24.45	24.06	24.5	0.0

<n66 Ant M1>

BW [MHz]	Modulation	RB Size	RB Offset	Power Low	Power Middle	Power High	Tune-up limit	MPR
				Ch. / Freq.	Ch. / Freq.	Ch. / Freq.	(dBm)	(dB)
Channel				344000	349000	354000	Tune-up limit	MPR
Frequency (MHz)				1720	1745	1770	(dBm)	(dB)
20	PI/2 BPSK	1	1	24.42	24.49	24.32	24.5	0.0
20	PI/2 BPSK	1	53	24.13	24.37	24.33		
20	PI/2 BPSK	1	104	24.22	24.34	24.34		
20	PI/2 BPSK	50	0	23.14	23.14	23.42	23.5	1.0
20	PI/2 BPSK	50	28	23.25	23.05	23.40		
20	PI/2 BPSK	50	56	23.28	23.01	23.26		
20	PI/2 BPSK	100	0	23.34	23.49	23.32	23.5	1.0
20	QPSK	1	1	24.16	24.29	24.05	24.5	0.0
20	QPSK	1	53	24.27	24.46	24.08		
20	QPSK	1	104	24.04	24.26	24.17		
20	QPSK	50	0	23.47	23.13	23.14	23.5	1.0
20	QPSK	50	28	23.21	23.13	23.42		
20	QPSK	50	56	23.32	23.23	23.34		
20	QPSK	100	0	23.22	23.24	23.32	23.5	1.0
20	16QAM	1	1	24.45	24.31	24.04	24.5	0.0
20	16QAM	1	53	24.14	24.11	24.24		
20	16QAM	1	104	24.30	24.50	24.35		
20	16QAM	50	0	23.29	23.41	23.23	23.5	1.0
20	16QAM	50	28	23.01	23.08	23.46		
20	16QAM	50	56	23.21	23.30	23.02		
20	16QAM	100	0	23.37	23.47	23.12	23.5	1.0
20	64QAM	1	1	24.04	24.05	24.05	24.5	0.0
20	64QAM	1	53	24.41	24.44	24.48		
20	64QAM	1	104	24.01	24.39	24.46		
20	64QAM	50	0	23.13	23.34	23.14	23.5	1.0
20	64QAM	50	28	23.50	23.43	23.20		
20	64QAM	50	56	23.18	23.27	23.42		
20	64QAM	100	0	23.10	23.11	23.48	23.5	1.0
20	256QAM	1	1	24.26	24.01	24.18	24.5	0.0
20	256QAM	1	53	24.34	24.30	24.41		
20	256QAM	1	104	24.40	24.03	24.44		
20	256QAM	50	0	23.15	23.21	23.40	23.5	1.0
20	256QAM	50	28	23.29	23.08	23.05		
20	256QAM	50	56	23.32	23.01	23.28		
20	256QAM	100	0	23.25	23.47	23.00	23.5	1.0
Channel				343500	349000	354500	Tune-up limit	MPR
Frequency (MHz)				1717.5	1745	1772.5	(dBm)	(dB)
15	PI/2 BPSK	1	1	24.14	24.14	24.36	24.5	0.0
Channel				343000	349000	355000	Tune-up limit	MPR
Frequency (MHz)				1715	1745	1775	(dBm)	(dB)
10	PI/2 BPSK	1	1	24.19	24.38	24.27	24.5	0.0
Channel				342500	349000	355500	Tune-up limit	MPR
Frequency (MHz)				1712.5	1745	1777.5	(dBm)	(dB)
5	PI/2 BPSK	1	1	24.44	24.40	24.02	24.5	0.0

<n66 Ant M3>

BW [MHz]	Modulation	RB Size	RB Offset	Power Low	Power Middle	Power High	Tune-up limit	MPR
				Ch. / Freq.	Ch. / Freq.	Ch. / Freq.	(dBm)	(dB)
Channel				344000	349000	354000	Tune-up limit	MPR
Frequency (MHz)				1720	1745	1770	(dBm)	(dB)
20	PI/2 BPSK	1	1	24.19	24.16	24.11	24.5	0.0
20	PI/2 BPSK	1	53	24.06	24.06	24.22		
20	PI/2 BPSK	1	104	24.15	24.22	24.26		
20	PI/2 BPSK	50	0	23.01	23.15	23.10	23.5	1.0
20	PI/2 BPSK	50	28	23.05	23.15	23.11		
20	PI/2 BPSK	50	56	23.15	23.27	23.24		
20	PI/2 BPSK	100	0	23.14	23.35	23.27	23.5	1.0
20	QPSK	1	1	24.34	24.45	24.21	24.5	0.0
20	QPSK	1	53	24.22	24.18	24.22		
20	QPSK	1	104	24.42	24.12	24.19		
20	QPSK	50	0	23.40	23.30	23.30	23.5	1.0
20	QPSK	50	28	23.18	23.45	23.05		
20	QPSK	50	56	23.46	23.24	23.24		
20	QPSK	100	0	23.16	23.49	23.25	23.5	1.0
20	16QAM	1	1	24.23	24.21	24.26	24.5	0.0
20	16QAM	1	53	24.17	24.47	24.33		
20	16QAM	1	104	24.24	24.31	24.43		
20	16QAM	50	0	23.49	23.19	23.46	23.5	1.0
20	16QAM	50	28	23.05	23.32	23.47		
20	16QAM	50	56	23.14	23.39	23.31		
20	16QAM	100	0	23.48	23.08	23.47	23.5	1.0
20	64QAM	1	1	24.11	24.45	24.16	24.5	0.0
20	64QAM	1	53	24.24	24.11	24.14		
20	64QAM	1	104	24.25	24.19	24.03		
20	64QAM	50	0	23.31	23.22	23.48	23.5	1.0
20	64QAM	50	28	23.40	23.34	23.45		
20	64QAM	50	56	23.08	23.15	23.32		
20	64QAM	100	0	23.47	23.36	23.26	23.5	1.0
20	256QAM	1	1	24.21	24.06	24.02	24.5	0.0
20	256QAM	1	53	24.50	24.04	24.43		
20	256QAM	1	104	24.07	24.33	24.40		
20	256QAM	50	0	23.19	23.09	23.20	23.5	1.0
20	256QAM	50	28	23.29	23.46	23.45		
20	256QAM	50	56	23.02	23.10	23.34		
20	256QAM	100	0	23.36	23.28	23.18	23.5	1.0
Channel				343500	349000	354500	Tune-up limit	MPR
Frequency (MHz)				1717.5	1745	1772.5	(dBm)	(dB)
15	PI/2 BPSK	1	1	24.20	24.29	24.49	24.5	0.0
Channel				343000	349000	355000	Tune-up limit	MPR
Frequency (MHz)				1715	1745	1775	(dBm)	(dB)
10	PI/2 BPSK	1	1	24.19	24.08	24.44	24.5	0.0
Channel				342500	349000	355500	Tune-up limit	MPR
Frequency (MHz)				1712.5	1745	1777.5	(dBm)	(dB)
5	PI/2 BPSK	1	1	24.14	24.35	24.48	24.5	0.0

<n71 Ant M1>

BW [MHz]	Modulation	RB Size	RB Offset	Power Low	Power Middle	Power High	Tune-up limit	MPR
				Ch. / Freq.	Ch. / Freq.	Ch. / Freq.	(dBm)	(dB)
Channel				134600	136100	137600	Tune-up limit	MPR
Frequency (MHz)				673	680.5	688	(dBm)	(dB)
20	PI/2 BPSK	1	1	24.39	24.24	24.50	24.5	0.0
20	PI/2 BPSK	1	53	24.31	24.10	24.37		
20	PI/2 BPSK	1	104	24.05	24.01	24.41		
20	PI/2 BPSK	50	0	23.32	23.43	23.09	23.5	1.0
20	PI/2 BPSK	50	28	23.38	23.06	23.23		
20	PI/2 BPSK	50	56	23.38	23.35	23.44		
20	PI/2 BPSK	100	0	23.28	23.19	23.12	23.5	1.0
20	QPSK	1	1	24.02	24.20	24.41	24.5	0.0
20	QPSK	1	53	24.07	24.47	24.23		
20	QPSK	1	104	24.35	24.40	24.12		
20	QPSK	50	0	23.43	23.28	23.49	23.5	1.0
20	QPSK	50	28	23.02	23.21	23.50		
20	QPSK	50	56	23.14	23.22	23.38		
20	QPSK	100	0	23.06	23.20	23.05	23.5	1.0
20	16QAM	1	1	24.30	24.02	24.40	24.5	0.0
20	16QAM	1	53	24.15	24.23	24.41		
20	16QAM	1	104	24.05	24.24	24.31		
20	16QAM	50	0	23.09	23.28	23.01	23.5	1.0
20	16QAM	50	28	23.11	23.50	23.44		
20	16QAM	50	56	23.01	23.28	23.49		
20	16QAM	100	0	23.39	23.36	23.03	23.5	1.0
20	64QAM	1	1	24.08	24.05	24.13	24.5	0.0
20	64QAM	1	53	24.44	24.30	24.37		
20	64QAM	1	104	24.22	24.04	24.20		
20	64QAM	50	0	23.07	23.30	23.07	23.5	1.0
20	64QAM	50	28	23.08	23.25	23.28		
20	64QAM	50	56	23.26	23.39	23.45		
20	64QAM	100	0	23.21	23.07	23.45	23.5	1.0
20	256QAM	1	1	24.37	24.04	24.05	24.5	0.0
20	256QAM	1	53	24.45	24.32	24.08		
20	256QAM	1	104	24.34	24.38	24.48		
20	256QAM	50	0	23.03	23.24	23.14	23.5	1.0
20	256QAM	50	28	23.18	23.12	23.10		
20	256QAM	50	56	23.39	23.21	23.06		
20	256QAM	100	0	23.03	23.23	23.44	23.5	1.0
Channel				134100	136100	138100	Tune-up limit	MPR
Frequency (MHz)				670.5	680.5	690.5	(dBm)	(dB)
15	PI/2 BPSK	1	1	24.16	24.08	24.49	24.5	0.0
Channel				133600	136100	138600	Tune-up limit	MPR
Frequency (MHz)				668	680.5	693	(dBm)	(dB)
10	PI/2 BPSK	1	1	24.20	24.06	24.49	24.5	0.0
Channel				133100	136100	139100	Tune-up limit	MPR
Frequency (MHz)				665.5	680.5	685.5	(dBm)	(dB)
5	PI/2 BPSK	1	1	24.33	24.37	24.45	24.5	0.0

<n71 Ant M3>

BW [MHz]	Modulation	RB Size	RB Offset	Power Low	Power Middle	Power High	Tune-up limit	MPR
				Ch. / Freq.	Ch. / Freq.	Ch. / Freq.	(dBm)	(dB)
Channel				134600	136100	137600	Tune-up limit	MPR
Frequency (MHz)				673	680.5	688	(dBm)	(dB)
20	PI/2 BPSK	1	1	24.10	24.39	24.11	24.5	0.0
20	PI/2 BPSK	1	53	24.08	24.17	24.30		
20	PI/2 BPSK	1	104	24.03	24.39	24.30		
20	PI/2 BPSK	50	0	23.02	23.25	23.20	23.5	1.0
20	PI/2 BPSK	50	28	23.33	23.39	23.23		
20	PI/2 BPSK	50	56	23.11	23.34	23.05		
20	PI/2 BPSK	100	0	23.10	23.21	23.07	23.5	1.0
20	QPSK	1	1	24.32	24.30	24.49	24.5	0.0
20	QPSK	1	53	24.45	24.21	24.38		
20	QPSK	1	104	24.01	24.17	24.18		
20	QPSK	50	0	23.14	23.24	23.07	23.5	1.0
20	QPSK	50	28	23.35	23.37	23.40		
20	QPSK	50	56	23.22	23.39	23.07		
20	QPSK	100	0	23.17	23.00	23.48	23.5	1.0
20	16QAM	1	1	24.32	24.21	24.27	24.5	0.0
20	16QAM	1	53	24.02	24.37	24.11		
20	16QAM	1	104	24.36	24.46	24.48		
20	16QAM	50	0	23.27	23.17	23.23	23.5	1.0
20	16QAM	50	28	23.20	23.42	23.46		
20	16QAM	50	56	23.20	23.13	23.37		
20	16QAM	100	0	23.28	23.29	23.20	23.5	1.0
20	64QAM	1	1	24.46	24.04	24.48	24.5	0.0
20	64QAM	1	53	24.30	24.35	24.44		
20	64QAM	1	104	24.22	24.00	24.41		
20	64QAM	50	0	23.31	23.19	23.26	23.5	1.0
20	64QAM	50	28	23.44	23.36	23.16		
20	64QAM	50	56	23.35	23.50	23.35		
20	64QAM	100	0	23.02	23.16	23.16	23.5	1.0
20	256QAM	1	1	24.41	24.06	24.34	24.5	0.0
20	256QAM	1	53	24.44	24.46	24.49		
20	256QAM	1	104	24.44	24.20	24.46		
20	256QAM	50	0	23.13	23.39	23.31	23.5	1.0
20	256QAM	50	28	23.08	23.31	23.42		
20	256QAM	50	56	23.02	23.03	23.49		
20	256QAM	100	0	23.26	23.20	23.20	23.5	1.0
Channel				134100	136100	138100	Tune-up limit	MPR
Frequency (MHz)				670.5	680.5	690.5	(dBm)	(dB)
15	PI/2 BPSK	1	1	24.14	24.10	24.29	24.5	0.0
Channel				133600	136100	138600	Tune-up limit	MPR
Frequency (MHz)				668	680.5	693	(dBm)	(dB)
10	PI/2 BPSK	1	1	24.10	24.16	24.41	24.5	0.0
Channel				133100	136100	139100	Tune-up limit	MPR
Frequency (MHz)				665.5	680.5	685.5	(dBm)	(dB)
5	PI/2 BPSK	1	1	24.29	24.22	24.23	24.5	0.0

<n77 Ant M1>

BW [MHz]	Modulation	RB Size	RB Offset	Power Low	Power Middle	Power High	Tune-up limit	MPR
				Ch. / Freq.	Ch. / Freq.	Ch. / Freq.	(dBm)	(dB)
Channel				620666	646720	679333	Tune-up limit	MPR
Frequency (MHz)				3310	3750	4190	(dBm)	(dB)
20	PI/2 BPSK	1	1	24.17	24.47	24.47	24.5	0.0
20	PI/2 BPSK	1	53	24.14	24.40	24.14		
20	PI/2 BPSK	1	104	24.27	24.14	24.44		
20	PI/2 BPSK	50	0	23.00	23.39	23.31	23.5	1.0
20	PI/2 BPSK	50	28	23.49	23.27	23.01		
20	PI/2 BPSK	50	56	23.12	23.04	23.34		
20	PI/2 BPSK	100	0	23.46	23.36	23.13	23.5	1.0
20	QPSK	1	1	24.21	24.37	24.30	24.5	0.0
20	QPSK	1	53	24.37	24.41	24.10		
20	QPSK	1	104	24.40	24.48	24.38		
20	QPSK	50	0	23.39	23.21	23.31	23.5	1.0
20	QPSK	50	28	23.14	23.13	23.18		
20	QPSK	50	56	23.17	23.27	23.45		
20	QPSK	100	0	23.19	23.49	23.36	23.5	1.0
20	16QAM	1	1	24.42	24.11	24.34	24.5	0.0
20	16QAM	1	53	24.28	24.18	24.15		
20	16QAM	1	104	24.09	24.09	24.33		
20	16QAM	50	0	23.33	23.09	23.14	23.5	1.0
20	16QAM	50	28	23.36	23.23	23.20		
20	16QAM	50	56	23.07	23.47	23.17		
20	16QAM	100	0	23.07	23.36	23.14	23.5	1.0
20	64QAM	1	1	24.04	24.26	24.39	24.5	0.0
20	64QAM	1	53	24.41	24.48	24.45		
20	64QAM	1	104	24.36	24.07	24.37		
20	64QAM	50	0	23.12	23.05	23.22	23.5	1.0
20	64QAM	50	28	23.14	23.16	23.49		
20	64QAM	50	56	23.20	23.50	23.48		
20	64QAM	100	0	23.20	23.23	23.36	23.5	1.0
20	256QAM	1	1	24.00	24.17	24.31	24.5	0.0
20	256QAM	1	53	24.40	24.03	24.08		
20	256QAM	1	104	24.30	24.05	24.16		
20	256QAM	50	0	23.40	23.47	23.34	23.5	1.0
20	256QAM	50	28	23.04	23.19	23.42		
20	256QAM	50	56	23.03	23.01	23.20		
20	256QAM	100	0	23.15	23.41	23.03	23.5	1.0
Channel				620166	646720	679833	Tune-up limit	MPR
Frequency (MHz)				3307.5	3750	4192.5	(dBm)	(dB)
15	PI/2 BPSK	1	1	24.21	24.10	24.42	24.5	0.0
Channel				619666	646720	680333	Tune-up limit	MPR
Frequency (MHz)				3305	3750	4195	(dBm)	(dB)
10	PI/2 BPSK	1	1	24.21	24.40	24.11	24.5	0.0
Channel				619166	646720	680833	Tune-up limit	MPR
Frequency (MHz)				3302.5	3750	4197.5	(dBm)	(dB)
5	PI/2 BPSK	1	1	24.44	24.09	24.34	24.5	0.0

<n77 Ant M3>

BW [MHz]	Modulation	RB Size	RB Offset	Power Low	Power Middle	Power High	Tune-up limit	MPR
				Ch. / Freq.	Ch. / Freq.	Ch. / Freq.	(dBm)	(dB)
Channel				620666	646720	679333	Tune-up limit	MPR
Frequency (MHz)				3310	3750	4190	(dBm)	(dB)
20	PI/2 BPSK	1	1	24.08	24.33	24.40	24.5	0.0
20	PI/2 BPSK	1	53	24.43	24.39	24.15		
20	PI/2 BPSK	1	104	24.32	24.16	24.13		
20	PI/2 BPSK	50	0	23.06	23.39	23.39	23.5	1.0
20	PI/2 BPSK	50	28	23.06	23.12	23.36		
20	PI/2 BPSK	50	56	23.45	23.22	23.22		
20	PI/2 BPSK	100	0	23.27	23.15	23.12	23.5	1.0
20	QPSK	1	1	24.16	24.42	24.08	24.5	0.0
20	QPSK	1	53	24.19	24.45	24.43		
20	QPSK	1	104	24.27	24.11	24.11		
20	QPSK	50	0	23.14	23.01	23.23	23.5	1.0
20	QPSK	50	28	23.20	23.10	23.19		
20	QPSK	50	56	23.01	23.49	23.20		
20	QPSK	100	0	23.00	23.37	23.37	23.5	1.0
20	16QAM	1	1	24.41	24.28	24.46	24.5	0.0
20	16QAM	1	53	24.20	24.03	24.27		
20	16QAM	1	104	24.43	24.22	24.46		
20	16QAM	50	0	23.25	23.27	23.18	23.5	1.0
20	16QAM	50	28	23.30	23.31	23.03		
20	16QAM	50	56	23.20	23.20	23.29		
20	16QAM	100	0	23.14	23.22	23.47	23.5	1.0
20	64QAM	1	1	24.01	24.29	24.34	24.5	0.0
20	64QAM	1	53	24.32	24.27	24.10		
20	64QAM	1	104	24.47	24.01	24.04		
20	64QAM	50	0	23.10	23.41	23.41	23.5	1.0
20	64QAM	50	28	23.23	23.27	23.37		
20	64QAM	50	56	23.05	23.37	23.05		
20	64QAM	100	0	23.27	23.28	23.27	23.5	1.0
20	256QAM	1	1	24.32	24.48	24.22	24.5	0.0
20	256QAM	1	53	24.47	24.05	24.01		
20	256QAM	1	104	24.45	24.46	24.46		
20	256QAM	50	0	23.49	23.16	23.11	23.5	1.0
20	256QAM	50	28	23.00	23.05	23.25		
20	256QAM	50	56	23.13	23.38	23.02		
20	256QAM	100	0	23.38	23.00	23.20	23.5	1.0
Channel				620166	646720	679833	Tune-up limit	MPR
Frequency (MHz)				3307.5	3750	4192.5	(dBm)	(dB)
15	PI/2 BPSK	1	1	24.50	24.40	24.25	24.5	0.0
Channel				619666	646720	680333	Tune-up limit	MPR
Frequency (MHz)				3305	3750	4195	(dBm)	(dB)
10	PI/2 BPSK	1	1	24.07	24.27	24.01	24.5	0.0
Channel				619166	646720	680833	Tune-up limit	MPR
Frequency (MHz)				3302.5	3750	4197.5	(dBm)	(dB)
5	PI/2 BPSK	1	1	24.12	24.48	24.22	24.5	0.0

<n78 Ant M1>

BW [MHz]	Modulation	RB Size	RB Offset	Power Low	Power Middle	Power High	Tune-up limit	MPR
				Ch. / Freq.	Ch. / Freq.	Ch. / Freq.	(dBm)	(dB)
				620666	636667	652666	Tune-up limit	MPR
				3310	3550	3790	(dBm)	(dB)
20	PI/2 BPSK	1	1	24.34	24.48	24.37	24.5	0.0
20	PI/2 BPSK	1	53	24.38	24.28	24.49		
20	PI/2 BPSK	1	104	24.32	24.21	24.21		
20	PI/2 BPSK	50	0	23.46	23.22	23.00	23.5	1.0
20	PI/2 BPSK	50	28	23.42	23.19	23.40		
20	PI/2 BPSK	50	56	23.28	23.46	23.01		
20	PI/2 BPSK	100	0	23.06	23.32	23.48	23.5	1.0
20	QPSK	1	1	24.04	24.03	24.05	24.5	0.0
20	QPSK	1	53	24.27	24.13	24.37		
20	QPSK	1	104	24.38	24.08	24.14		
20	QPSK	50	0	23.35	23.32	23.18	23.5	1.0
20	QPSK	50	28	23.15	23.16	23.01		
20	QPSK	50	56	23.40	23.23	23.44		
20	QPSK	100	0	23.36	23.38	23.15	23.5	1.0
20	16QAM	1	1	24.48	24.36	24.47	24.5	0.0
20	16QAM	1	53	24.12	24.33	24.29		
20	16QAM	1	104	24.22	24.39	24.24		
20	16QAM	50	0	23.25	23.33	23.28	23.5	1.0
20	16QAM	50	28	23.05	23.44	23.29		
20	16QAM	50	56	23.03	23.06	23.15		
20	16QAM	100	0	23.44	23.35	23.36	23.5	1.0
20	64QAM	1	1	24.43	24.23	24.43	24.5	0.0
20	64QAM	1	53	24.39	24.24	24.13		
20	64QAM	1	104	24.40	24.45	24.28		
20	64QAM	50	0	23.36	23.16	23.16	23.5	1.0
20	64QAM	50	28	23.25	23.45	23.33		
20	64QAM	50	56	23.09	23.24	23.13		
20	64QAM	100	0	23.21	23.19	23.43	23.5	1.0
20	256QAM	1	1	24.43	24.43	24.19	24.5	0.0
20	256QAM	1	53	24.08	24.29	24.42		
20	256QAM	1	104	24.45	24.23	24.30		
20	256QAM	50	0	23.39	23.01	23.47	23.5	1.0
20	256QAM	50	28	23.35	23.49	23.46		
20	256QAM	50	56	23.48	23.34	23.36		
20	256QAM	100	0	23.12	23.20	23.15	23.5	1.0
				620166	646720	679833	Tune-up limit	MPR
				3307.5	3750	4192.5	(dBm)	(dB)
15	PI/2 BPSK	1	1	24.24	24.20	24.26	24.5	0.0
				619666	646720	680333	Tune-up limit	MPR
				3305	3750	4195	(dBm)	(dB)
10	PI/2 BPSK	1	1	24.06	24.03	24.15	24.5	0.0
				619166	646720	680833	Tune-up limit	MPR
				3302.5	3750	4197.5	(dBm)	(dB)
5	PI/2 BPSK	1	1	24.40	24.25	24.19	24.5	0.0

<n78 Ant M3>

BW [MHz]	Modulation	RB Size	RB Offset	Power Low	Power Middle	Power High	Tune-up limit	MPR
				Ch. / Freq.	Ch. / Freq.	Ch. / Freq.	(dBm)	(dB)
Channel				620666	636667	652666	Tune-up limit	MPR
Frequency (MHz)				3310	3550	3790	(dBm)	(dB)
20	PI/2 BPSK	1	1	24.10	24.49	24.19	24.5	0.0
20	PI/2 BPSK	1	53	24.48	24.41	24.40		
20	PI/2 BPSK	1	104	24.11	24.24	24.25		
20	PI/2 BPSK	50	0	23.23	23.02	23.13	23.5	1.0
20	PI/2 BPSK	50	28	23.22	23.11	23.24		
20	PI/2 BPSK	50	56	23.15	23.43	23.48		
20	PI/2 BPSK	100	0	23.24	23.00	23.31	23.5	1.0
20	QPSK	1	1	24.07	24.14	24.37	24.5	0.0
20	QPSK	1	53	24.41	24.05	24.23		
20	QPSK	1	104	24.05	24.26	24.17		
20	QPSK	50	0	23.50	23.05	23.20	23.5	1.0
20	QPSK	50	28	23.47	23.18	23.33		
20	QPSK	50	56	23.34	23.05	23.20		
20	QPSK	100	0	23.45	23.05	23.18	23.5	1.0
20	16QAM	1	1	24.49	24.22	24.47	24.5	0.0
20	16QAM	1	53	24.44	24.46	24.47		
20	16QAM	1	104	24.42	24.18	24.29		
20	16QAM	50	0	23.23	23.26	23.24	23.5	1.0
20	16QAM	50	28	23.05	23.06	23.16		
20	16QAM	50	56	23.15	23.29	23.03		
20	16QAM	100	0	23.40	23.11	23.39	23.5	1.0
20	64QAM	1	1	24.32	24.35	24.40	24.5	0.0
20	64QAM	1	53	24.20	24.21	24.15		
20	64QAM	1	104	24.15	24.10	24.11		
20	64QAM	50	0	23.38	23.39	23.35	23.5	1.0
20	64QAM	50	28	23.48	23.43	23.26		
20	64QAM	50	56	23.14	23.28	23.10		
20	64QAM	100	0	23.18	23.35	23.22	23.5	1.0
20	256QAM	1	1	24.32	24.23	24.31	24.5	0.0
20	256QAM	1	53	24.21	24.47	24.19		
20	256QAM	1	104	24.16	24.41	24.23		
20	256QAM	50	0	23.11	23.05	23.42	23.5	1.0
20	256QAM	50	28	23.41	23.11	23.49		
20	256QAM	50	56	23.27	23.29	23.47		
20	256QAM	100	0	23.36	23.21	23.38	23.5	1.0
Channel				620166	646720	679833	Tune-up limit	MPR
Frequency (MHz)				3307.5	3750	4192.5	(dBm)	(dB)
15	PI/2 BPSK	1	1	24.10	24.10	24.49	24.5	0.0
Channel				619666	646720	680333	Tune-up limit	MPR
Frequency (MHz)				3305	3750	4195	(dBm)	(dB)
10	PI/2 BPSK	1	1	24.39	24.12	24.12	24.5	0.0
Channel				619166	646720	680833	Tune-up limit	MPR
Frequency (MHz)				3302.5	3750	4197.5	(dBm)	(dB)
5	PI/2 BPSK	1	1	24.31	24.45	24.10	24.5	0.0

9. SAR Test Results

General Note:

1. Per KDB 447498 D01v06, the reported SAR is the measured SAR value adjusted for maximum tune-up tolerance.
 - a. Tune-up scaling Factor = tune-up limit power (mW) / EUT RF power (mW), where tune-up limit is the maximum rated power among all production units.
 - b. For SAR testing of WLAN signal with non-100% duty cycle, the measured SAR is scaled-up by the duty cycle scaling factor which is equal to "1/(duty cycle)"
 - c. For WWAN: Reported SAR(W/kg)= Measured SAR(W/kg)*Tune-up Scaling Factor
2. Per KDB 447498 D01v06, for each exposure position, testing of other required channels within the operating mode of a frequency band is not required when the *reported* 1-g or 10-g SAR for the mid-band or highest output power channel is:
 - ≤ 0.8 W/kg or 2.0 W/kg, for 1-g or 10-g respectively, when the transmission band is ≤ 100 MHz
 - ≤ 0.6 W/kg or 1.5 W/kg, for 1-g or 10-g respectively, when the transmission band is between 100 MHz and 200 MHz
 - ≤ 0.4 W/kg or 1.0 W/kg, for 1-g or 10-g respectively, when the transmission band is ≥ 200 MHz
3. Per KDB 865664 D01v01r04, for each frequency band, repeated SAR measurement is required only when the measured SAR is ≥ 0.8 W/kg.

FR1 Note:

1. For 5G NR test procedure was following step similar FCC KDB 941225 D05:
 - a. SAR testing start with the largest channel bandwidth and measure SAR for PI/2 BPSK with 1 RB allocation, using the RB offset and required test channel combination with the highest maximum output power for RB offsets at the upper edge, middle and lower edge of each required test channel.
 - b. 50% RB allocation for PI/2 BPSK SAR testing follows 1RB PI/2 BPSK allocation procedure
 - c. PI/2 BPSK with 100% RB allocation, SAR is not required when the highest maximum output power for 100 % RB allocation is less than the highest maximum output power in 50% and 1 RB allocations and the highest reported SAR for 1 RB and 50% RB allocation are ≤ 0.8 W/kg. Otherwise, SAR is measured for the highest output power channel; and if the reported SAR is > 1.45 W/kg, the remaining required test channels must also be tested.
 - d. QPSK/16QAM/64QAM/256QAM output powers are not $\frac{1}{2}$ dB higher than the same configuration in PI/2 BPSK, also reported SAR for the PI/2 BPSK configuration is less than 1.45 W/kg, QPSK/16QAM/64QAM/256QAM SAR testing are not required.
 - e. Smaller bandwidth output power for each RB allocation configuration for this device will not $\frac{1}{2}$ dB higher than the same configuration in the largest supported bandwidth, and the reported SAR for the largest supported bandwidth is ≤ 1.45 W/kg, smaller bandwidth SAR testing is not required for this device
 - f. For 5G FR1 n5/n12/n41/n71 the maximum bandwidth does not support three non-overlapping channels, when a device supports overlapping channel assignment in a channel bandwidth configuration, the middle channel of the group of overlapping channels should be selected for testing.
2. Due to test setup limitations, SAR testing for NR was performed using Factory Test Mode software to establish the connection and perform SAR with 100% duty cycle. AT Commands were used to establish the connection.

Plot No.	Band	BW (MHz)	Modulation	RB Size	RB offset	Test Position	Gap (mm)	Ch.	Freq. (MHz)	Average Power (dBm)	Tune-Up Limit (dBm)	Measured 1g SAR (W/kg)	Reported 1g SAR (W/kg)
	FR1 Band 2_Ant M1	20M	BPSK	1	53	Back	15mm	376000	1880	21.29	21.50	0.205	0.22
	FR1 Band 2_Ant M1	20M	BPSK	50	28		15mm	376000	1880	20.36	20.50	0.136	0.14
	FR1 Band 2_Ant M2	20M	BPSK	1	53	Back	15mm	376000	1880	21.29	21.50	0.198	0.21
	FR1 Band 2_Ant M2	20M	BPSK	50	28		15mm	376000	1880	20.36	20.50	0.122	0.13
	FR1 Band 2_Ant M3	20M	BPSK	1	53	Back	15mm	376000	1880	21.29	21.50	0.00813	0.01
	FR1 Band 2_Ant M3	20M	BPSK	50	28		15mm	376000	1880	20.36	20.50	0.00769	0.01
	FR1 Band 2_Ant M4	20M	BPSK	1	53	Back	15mm	376000	1880	21.11	21.50	0.201	0.22
	FR1 Band 2_Ant M4	20M	BPSK	50	28		15mm	376000	1880	20.06	20.50	0.132	0.15
	FR1 Band 2_Ant M5	20M	BPSK	1	53	Back	15mm	376000	1880	21.11	21.50	0.00752	0.01
	FR1 Band 2_Ant M5	20M	BPSK	50	28		15mm	376000	1880	20.06	20.50	0.00687	0.01
	FR1 Band 2_Ant M6	20M	BPSK	1	53	Back	15mm	376000	1880	21.11	21.50	0.00791	0.01
	FR1 Band 2_Ant M6	20M	BPSK	50	28		15mm	376000	1880	20.06	20.50	0.00726	0.01
1	FR1 Band 5_Ant M1	20M	BPSK	1	53	Back	15mm	167300	836.5	24.26	24.50	0.247	0.26
	FR1 Band 5_Ant M1	20M	BPSK	50	28		15mm	167300	836.5	23.05	23.50	0.201	0.22
	FR1 Band 5_Ant M2	20M	BPSK	1	53	Back	15mm	167300	836.5	24.26	24.50	0.238	0.25
	FR1 Band 5_Ant M2	20M	BPSK	50	28		15mm	167300	836.5	23.05	23.50	0.196	0.22
	FR1 Band 5_Ant M3	20M	BPSK	1	53	Back	15mm	167300	836.5	24.26	24.50	0.0450	0.05
	FR1 Band 5_Ant M3	20M	BPSK	50	28		15mm	167300	836.5	23.05	23.50	0.0411	0.05
	FR1 Band 5_Ant M4	20M	BPSK	1	53	Back	15mm	167300	836.5	24.42	24.50	0.229	0.23
	FR1 Band 5_Ant M4	20M	BPSK	50	28		15mm	167300	836.5	23.42	23.50	0.185	0.19
	FR1 Band 5_Ant M5	20M	BPSK	1	53	Back	15mm	167300	836.5	24.42	24.50	0.0421	0.04
	FR1 Band 5_Ant M5	20M	BPSK	50	28		15mm	167300	836.5	23.42	23.50	0.0396	0.04
	FR1 Band 5_Ant M6	20M	BPSK	1	53	Back	15mm	167300	836.5	24.42	24.50	0.0436	0.04
	FR1 Band 5_Ant M6	20M	BPSK	50	28		15mm	167300	836.5	23.42	23.50	0.0402	0.04
2	FR1 Band 7_Ant M1	20M	BPSK	1	53	Back	15mm	507000	2535	24.38	24.50	0.441	0.45
	FR1 Band 7_Ant M1	20M	BPSK	50	28		15mm	507000	2535	23.38	23.50	0.358	0.37
	FR1 Band 7_Ant M2	20M	BPSK	1	53	Back	15mm	507000	2535	24.38	24.50	0.396	0.41
	FR1 Band 7_Ant M2	20M	BPSK	50	28		15mm	507000	2535	23.38	23.50	0.326	0.34
	FR1 Band 7_Ant M3	20M	BPSK	1	53	Back	15mm	507000	2535	24.38	24.50	0.140	0.14
	FR1 Band 7_Ant M3	20M	BPSK	50	28		15mm	507000	2535	23.38	23.50	0.118	0.12
	FR1 Band 7_Ant M4	20M	BPSK	1	53	Back	15mm	507000	2535	24.38	24.50	0.421	0.43
	FR1 Band 7_Ant M4	20M	BPSK	50	28		15mm	507000	2535	23.38	23.50	0.337	0.35
	FR1 Band 7_Ant M5	20M	BPSK	1	53	Back	15mm	507000	2535	24.38	24.50	0.134	0.14
	FR1 Band 7_Ant M5	20M	BPSK	50	28		15mm	507000	2535	23.38	23.50	0.105	0.11
	FR1 Band 7_Ant M6	20M	BPSK	1	53	Back	15mm	507000	2535	24.38	24.50	0.128	0.13
	FR1 Band 7_Ant M6	20M	BPSK	50	28		15mm	507000	2535	23.38	23.50	0.0987	0.10
3	FR1 Band 12_Ant M1	15M	BPSK	1	40	Back	15mm	141500	707.5	24.23	24.50	0.310	0.33
	FR1 Band 12_Ant M1	15M	BPSK	37	21		15mm	141500	707.5	23.15	23.50	0.268	0.29
	FR1 Band 12_Ant M2	15M	BPSK	1	40	Back	15mm	141500	707.5	24.23	24.50	0.287	0.31
	FR1 Band 12_Ant M2	15M	BPSK	37	21		15mm	141500	707.5	23.15	23.50	0.241	0.26
	FR1 Band 12_Ant M3	15M	BPSK	1	40	Back	15mm	141500	707.5	24.23	24.50	0.0723	0.08
	FR1 Band 12_Ant M3	15M	BPSK	37	21		15mm	141500	707.5	23.15	23.50	0.0621	0.07
	FR1 Band 12_Ant M4	15M	BPSK	1	40	Back	15mm	141500	707.5	24.23	24.50	0.292	0.31
	FR1 Band 12_Ant M4	15M	BPSK	37	21		15mm	141500	707.5	23.15	23.50	0.253	0.27
	FR1 Band 12_Ant M5	15M	BPSK	1	40	Back	15mm	141500	707.5	24.23	24.50	0.0657	0.07
	FR1 Band 12_Ant M5	15M	BPSK	37	21		15mm	141500	707.5	23.15	23.50	0.0597	0.06
	FR1 Band 12_Ant M6	15M	BPSK	1	40	Back	15mm	141500	707.5	24.23	24.50	0.0689	0.07
	FR1 Band 12_Ant M6	15M	BPSK	37	21		15mm	141500	707.5	23.15	23.50	0.0603	0.07

Plot No.	Band	BW (MHz)	Modulation	RB Size	RB offset	Test Position	Gap (mm)	Ch.	Freq. (MHz)	Average Power (dBm)	Tune-Up Limit (dBm)	Measured 1g SAR (W/kg)	Reported 1g SAR (W/kg)
4	FR1 Band 25_Ant M1	20M	QPSK	1	53	Back	15mm	376500	1882.5	24.46	24.50	0.429	0.43
	FR1 Band 25_Ant M1	20M	QPSK	50	28		15mm	376500	1882.5	23.17	23.50	0.328	0.35
	FR1 Band 25_Ant M2	20M	QPSK	1	53	Back	15mm	376500	1882.5	24.46	24.50	0.388	0.39
	FR1 Band 25_Ant M2	20M	QPSK	50	28		15mm	376500	1882.5	23.17	23.50	0.302	0.33
	FR1 Band 25_Ant M3	20M	QPSK	1	53	Back	15mm	376500	1882.5	24.46	24.50	0.0424	0.04
	FR1 Band 25_Ant M3	20M	QPSK	50	28		15mm	376500	1882.5	23.17	23.50	0.0357	0.04
	FR1 Band 25_Ant M4	20M	QPSK	1	53	Back	15mm	376500	1882.5	24.46	24.50	0.419	0.42
	FR1 Band 25_Ant M4	20M	QPSK	50	28		15mm	376500	1882.5	23.17	23.50	0.314	0.34
	FR1 Band 25_Ant M5	20M	QPSK	1	53	Back	15mm	376500	1882.5	24.46	24.50	0.0388	0.04
	FR1 Band 25_Ant M5	20M	QPSK	50	28		15mm	376500	1882.5	23.17	23.50	0.0326	0.04
	FR1 Band 25_Ant M6	20M	QPSK	1	53	Back	15mm	376500	1882.5	24.46	24.50	0.0397	0.04
	FR1 Band 25_Ant M6	20M	QPSK	50	28		15mm	376500	1882.5	23.17	23.50	0.0339	0.04
5	FR1 Band 38_Ant M1	20M	QPSK	1	53	Back	15mm	520000	2595	24.09	24.50	0.440	0.48
	FR1 Band 38_Ant M1	20M	QPSK	50	28		15mm	520000	2595	23.18	23.50	0.325	0.35
	FR1 Band 38_Ant M2	20M	QPSK	1	53	Back	15mm	520000	2595	24.09	24.50	0.411	0.45
	FR1 Band 38_Ant M2	20M	QPSK	50	28		15mm	520000	2595	23.18	23.50	0.302	0.33
	FR1 Band 38_Ant M3	20M	QPSK	1	53	Back	15mm	520000	2595	24.09	24.50	0.0819	0.09
	FR1 Band 38_Ant M3	20M	QPSK	50	28		15mm	520000	2595	23.18	23.50	0.0742	0.08
	FR1 Band 38_Ant M4	20M	QPSK	1	53	Back	15mm	520000	2595	24.09	24.50	0.402	0.44
	FR1 Band 38_Ant M4	20M	QPSK	50	28		15mm	520000	2595	23.18	23.50	0.297	0.32
	FR1 Band 38_Ant M5	20M	QPSK	1	53	Back	15mm	520000	2595	24.09	24.50	0.0801	0.09
	FR1 Band 38_Ant M5	20M	QPSK	50	28		15mm	520000	2595	23.18	23.50	0.0721	0.08
	FR1 Band 38_Ant M6	20M	QPSK	1	53	Back	15mm	520000	2595	24.09	24.50	0.0786	0.09
	FR1 Band 38_Ant M6	20M	QPSK	50	28		15mm	520000	2595	23.18	23.50	0.0706	0.08
6	FR1 Band 48_Ant M1	20M	QPSK	1	53	Back	15mm	641666	3625	24.46	24.50	0.113	0.11
	FR1 Band 48_Ant M1	20M	QPSK	50	28		15mm	641666	3625	23.02	23.50	0.0987	0.11
	FR1 Band 48_Ant M2	20M	QPSK	1	53	Back	15mm	641666	3625	24.46	24.50	0.102	0.10
	FR1 Band 48_Ant M2	20M	QPSK	50	28		15mm	641666	3625	23.02	23.50	0.0924	0.10
	FR1 Band 48_Ant M3	20M	QPSK	1	53	Back	15mm	641666	3625	24.46	24.50	0.0154	0.02
	FR1 Band 48_Ant M3	20M	QPSK	50	28		15mm	641666	3625	23.02	23.50	0.0102	0.01
	FR1 Band 48_Ant M4	20M	QPSK	1	53	Back	15mm	641666	3625	24.46	24.50	0.105	0.11
	FR1 Band 48_Ant M4	20M	QPSK	50	28		15mm	641666	3625	23.02	23.50	0.0938	0.11
	FR1 Band 48_Ant M5	20M	QPSK	1	53	Back	15mm	641666	3625	24.46	24.50	0.0123	0.01
	FR1 Band 48_Ant M5	20M	QPSK	50	28		15mm	641666	3625	23.02	23.50	0.00887	0.01
	FR1 Band 48_Ant M6	20M	QPSK	1	53	Back	15mm	641666	3625	24.46	24.50	0.0141	0.01
	FR1 Band 48_Ant M6	20M	QPSK	50	28		15mm	641666	3625	23.02	23.50	0.0906	0.10
7	FR1 Band 66_Ant M1	20M	BPSK	1	53	Back	15mm	349000	1745	24.37	24.50	0.337	0.35
	FR1 Band 66_Ant M1	20M	BPSK	50	28		15mm	349000	1745	23.05	23.50	0.259	0.29
	FR1 Band 66_Ant M2	20M	BPSK	1	53	Back	15mm	349000	1745	24.37	24.50	0.301	0.31
	FR1 Band 66_Ant M2	20M	BPSK	50	28		15mm	349000	1745	23.05	23.50	0.237	0.26
	FR1 Band 66_Ant M3	20M	BPSK	1	53	Back	15mm	349000	1745	24.37	24.50	0.0191	0.02
	FR1 Band 66_Ant M3	20M	BPSK	50	28		15mm	349000	1745	23.05	23.50	0.0124	0.01
	FR1 Band 66_Ant M4	20M	BPSK	1	53	Back	15mm	349000	1745	24.37	24.50	0.321	0.33
	FR1 Band 66_Ant M4	20M	BPSK	50	28		15mm	349000	1745	23.05	23.50	0.246	0.27
	FR1 Band 66_Ant M5	20M	BPSK	1	53	Back	15mm	349000	1745	24.37	24.50	0.0184	0.02
	FR1 Band 66_Ant M5	20M	BPSK	50	28		15mm	349000	1745	23.05	23.50	0.0103	0.01
	FR1 Band 66_Ant M6	20M	BPSK	1	53	Back	15mm	349000	1745	24.37	24.50	0.0187	0.02
	FR1 Band 66_Ant M6	20M	BPSK	50	28		15mm	349000	1745	23.05	23.50	0.0112	0.01

Plot No.	Band	BW (MHz)	Modulation	RB Size	RB offset	Test Position	Gap (mm)	Ch.	Freq. (MHz)	Average Power (dBm)	Tune-Up Limit (dBm)	Measured 1g SAR (W/kg)	Reported 1g SAR (W/kg)	
8	FR1 Band 71_Ant M1	20M	BPSK	1	53	Back	15mm	136100	680.5	24.10	24.50	0.260	0.29	
	FR1 Band 71_Ant M1	20M	BPSK	50	28		15mm	136100	680.5	23.06	23.50	0.185	0.21	
	FR1 Band 71_Ant M2	20M	BPSK	1	53	Back	15mm	136100	680.5	24.10	24.50	0.214	0.24	
	FR1 Band 71_Ant M2	20M	BPSK	50	28		15mm	136100	680.5	23.06	23.50	0.172	0.19	
	FR1 Band 71_Ant M3	20M	BPSK	1	53	Back	15mm	136100	680.5	24.10	24.50	0.0415	0.05	
	FR1 Band 71_Ant M3	20M	BPSK	50	28		15mm	136100	680.5	23.06	23.50	0.0361	0.04	
	FR1 Band 71_Ant M4	20M	BPSK	1	53	Back	15mm	136100	680.5	24.10	24.50	0.234	0.26	
	FR1 Band 71_Ant M4	20M	BPSK	50	28		15mm	136100	680.5	23.06	23.50	0.177	0.20	
	FR1 Band 71_Ant M5	20M	BPSK	1	53	Back	15mm	136100	680.5	24.10	24.50	0.0358	0.04	
	FR1 Band 71_Ant M5	20M	BPSK	50	28		15mm	136100	680.5	23.06	23.50	0.0311	0.03	
	FR1 Band 71_Ant M6	20M	BPSK	1	53	Back	15mm	136100	680.5	24.10	24.50	0.0395	0.04	
	FR1 Band 71_Ant M6	20M	BPSK	50	28		15mm	136100	680.5	23.06	23.50	0.0336	0.04	
	9	FR1 Band 77_Ant M1	20M	BPSK	1	53	Back	15mm	518601	2593	24.34	24.50	0.146	0.15
		FR1 Band 77_Ant M1	20M	BPSK	50	28		15mm	518601	2593	23.08	23.50	0.101	0.11
FR1 Band 77_Ant M2		20M	BPSK	1	53	Back	15mm	518601	2593	24.34	24.50	0.125	0.13	
FR1 Band 77_Ant M2		20M	BPSK	50	28		15mm	518601	2593	23.08	23.50	0.0853	0.09	
FR1 Band 77_Ant M3		20M	BPSK	1	53	Back	15mm	501200	2506	24.12	24.50	0.0256	0.03	
FR1 Band 77_Ant M3		20M	BPSK	50	28		15mm	518601	2593	24.34	24.50	0.0186	0.02	
FR1 Band 77_Ant M4		20M	BPSK	1	53	Back	15mm	536000	2680	24.30	24.50	0.138	0.14	
FR1 Band 77_Ant M4		20M	BPSK	50	28		15mm	518601	2593	23.08	23.50	0.0902	0.10	
FR1 Band 77_Ant M5		20M	BPSK	1	53	Back	15mm	518601	2593	21.35	21.50	0.0234	0.05	
FR1 Band 77_Ant M5		20M	BPSK	50	28		15mm	518601	2593	21.35	21.50	0.0172	0.03	
FR1 Band 77_Ant M6		20M	BPSK	1	53	Back	15mm	518601	2593	21.35	21.50	0.0249	0.05	
FR1 Band 77_Ant M6		20M	BPSK	50	28		15mm	518601	2593	21.35	21.50	0.0176	0.03	

10. Simultaneous Transmission Analysis

The 3G/4G/WiFi data is located in report number SAR.20230610. The data listed in the tables below was extracted from the report filed with this report.

Sim-Tx configuration

No.	Simultaneous Transmission Configuration	Exposure Positions
		Body
1	UMTS + 2.4 GHz Wifi W1 + 2.4 GHz WiFi W2	Yes
2	UMTS + 5 GHz Wifi W1 + 5 GHz WiFi W2	Yes
3	LTE + 2.4 GHz Wifi W1 + 2.4 GHz WiFi W2	Yes
4	LTE + 5 GHz Wifi W1 + 5 GHz WiFi W2	Yes
5	FR1 + 2.4 GHz Wifi W1 + 2.4 GHz WiFi W2	Yes
6	FR1 + 5 GHz Wifi W1 + 5 GHz WiFi W2	Yes

General Note:

1. The following summations represent the absolute worst cases for simultaneous transmission with WWAN and WLAN.
2. The Scaled SAR summation is calculated based on the same configuration and test position.

Body Exposure Conditions

WWAN Band	Antenna	Exposure Position	1	2	3	4	5	1+2+3 Summed 1g SAR (W/kg)	1+4+5 Summed 1g SAR (W/kg)
			WWAN	2.4GHz Wi-Fi W1	2.4GHz Wi-Fi W2	5GHz Wi-Fi W1	5GHz Wi-Fi W2		
			1g SAR (W/kg)	1g SAR (W/kg)	1g SAR (W/kg)	1g SAR (W/kg)	1g SAR (W/kg)		
WCDMA Band 2	M1	Back	1.00	0.01	0.05	0.01	0.37	1.06	1.38
	M2		0.99	0.01	0.05	0.01	0.37	1.05	1.37
	M3		0.10	0.01	0.05	0.01	0.37	0.16	0.48
	M4		1.00	0.01	0.05	0.01	0.37	1.06	1.38
	M5		0.10	0.01	0.05	0.01	0.37	0.16	0.48
	M6		0.10	0.01	0.05	0.01	0.37	0.16	0.48
WCDMA Band 4	M1		1.30	0.01	0.05	0.01	0.37	1.36	1.68
	M2		1.24	0.01	0.05	0.01	0.37	1.30	1.62
	M3		0.07	0.01	0.05	0.01	0.37	0.13	0.45
	M4		1.28	0.01	0.05	0.01	0.37	1.34	1.66
	M5		0.06	0.01	0.05	0.01	0.37	0.12	0.44
	M6		0.07	0.01	0.05	0.01	0.37	0.13	0.45
WCDMA Band 5	M1		0.85	0.01	0.05	0.01	0.37	0.91	1.23
	M2		0.84	0.01	0.05	0.01	0.37	0.90	1.22
	M3		0.08	0.01	0.05	0.01	0.37	0.14	0.46
	M4		0.84	0.01	0.05	0.01	0.37	0.90	1.22
	M5		0.08	0.01	0.05	0.01	0.37	0.14	0.46
	M6		0.08	0.01	0.05	0.01	0.37	0.14	0.46
LTE Band 2	M1		0.51	0.01	0.05	0.01	0.37	0.57	0.89
	M2		0.51	0.01	0.05	0.01	0.37	0.57	0.89
	M3		0.09	0.01	0.05	0.01	0.37	0.15	0.47
	M4		0.51	0.01	0.05	0.01	0.37	0.57	0.89
	M5		0.09	0.01	0.05	0.01	0.37	0.15	0.47
	M6		0.09	0.01	0.05	0.01	0.37	0.15	0.47
LTE Band 4	M1		0.84	0.01	0.05	0.01	0.37	0.90	1.22
	M2		0.83	0.01	0.05	0.01	0.37	0.89	1.21
	M3		0.05	0.01	0.05	0.01	0.37	0.11	0.43
	M4		0.83	0.01	0.05	0.01	0.37	0.89	1.21
	M5		0.04	0.01	0.05	0.01	0.37	0.10	0.42
	M6		0.04	0.01	0.05	0.01	0.37	0.10	0.42
LTE Band 5	M1	0.42	0.01	0.05	0.01	0.37	0.48	0.80	
	M2	0.42	0.01	0.05	0.01	0.37	0.48	0.80	
	M3	0.07	0.01	0.05	0.01	0.37	0.13	0.45	
	M4	0.41	0.01	0.05	0.01	0.37	0.47	0.79	
	M5	0.07	0.01	0.05	0.01	0.37	0.13	0.45	
	M6	0.07	0.01	0.05	0.01	0.37	0.13	0.45	
LTE Band 7	M1	0.76	0.01	0.05	0.01	0.37	0.82	1.14	
	M2	0.74	0.01	0.05	0.01	0.37	0.80	1.12	
	M3	0.29	0.01	0.05	0.01	0.37	0.35	0.67	
	M4	0.75	0.01	0.05	0.01	0.37	0.81	1.13	
	M5	0.27	0.01	0.05	0.01	0.37	0.33	0.65	
	M6	0.28	0.01	0.05	0.01	0.37	0.34	0.66	
LTE Band 12	M1	0.51	0.01	0.05	0.01	0.37	0.57	0.89	
	M2	0.50	0.01	0.05	0.01	0.37	0.56	0.88	
	M3	0.03	0.01	0.05	0.01	0.37	0.09	0.41	
	M4	0.51	0.01	0.05	0.01	0.37	0.57	0.89	
	M5	0.03	0.01	0.05	0.01	0.37	0.09	0.41	
	M6	0.03	0.01	0.05	0.01	0.37	0.09	0.41	

WWAN Band	Antenna	Exposure Position	1	2	3	4	5	1+2+3 Summed 1g SAR (W/kg)	1+4+5 Summed 1g SAR (W/kg)
			WWAN	2.4GHz Wi-Fi W1	2.4GHz Wi-Fi W2	5GHz Wi-Fi W1	5GHz Wi-Fi W2		
			1g SAR (W/kg)	1g SAR (W/kg)	1g SAR (W/kg)	1g SAR (W/kg)	1g SAR (W/kg)		
LTE Band 13	M1	Back	0.12	0.01	0.05	0.01	0.37	0.18	0.50
	M2		0.11	0.01	0.05	0.01	0.37	0.17	0.49
	M3		0.05	0.01	0.05	0.01	0.37	0.11	0.43
	M4		0.11	0.01	0.05	0.01	0.37	0.17	0.49
	M5		0.05	0.01	0.05	0.01	0.37	0.11	0.43
	M6		0.05	0.01	0.05	0.01	0.37	0.11	0.43
LTE Band 14	M1		0.19	0.01	0.05	0.01	0.37	0.25	0.57
	M2		0.19	0.01	0.05	0.01	0.37	0.25	0.57
	M3		0.07	0.01	0.05	0.01	0.37	0.13	0.45
	M4		0.18	0.01	0.05	0.01	0.37	0.24	0.56
	M5		0.07	0.01	0.05	0.01	0.37	0.13	0.45
	M6		0.06	0.01	0.05	0.01	0.37	0.12	0.44
LTE Band 25	M1		0.62	0.01	0.05	0.01	0.37	0.68	1.00
	M2		0.59	0.01	0.05	0.01	0.37	0.65	0.97
	M3		0.10	0.01	0.05	0.01	0.37	0.16	0.48
	M4		0.58	0.01	0.05	0.01	0.37	0.64	0.96
	M5		0.10	0.01	0.05	0.01	0.37	0.16	0.48
	M6		0.10	0.01	0.05	0.01	0.37	0.16	0.48
LTE Band 26	M1		0.44	0.01	0.05	0.01	0.37	0.50	0.82
	M2		0.43	0.01	0.05	0.01	0.37	0.49	0.81
	M3		0.08	0.01	0.05	0.01	0.37	0.14	0.46
	M4		0.42	0.01	0.05	0.01	0.37	0.48	0.80
	M5		0.07	0.01	0.05	0.01	0.37	0.13	0.45
	M6		0.07	0.01	0.05	0.01	0.37	0.13	0.45
LTE Band 38	M1		0.23	0.01	0.05	0.01	0.37	0.29	0.61
	M2		0.22	0.01	0.05	0.01	0.37	0.28	0.60
	M3		0.12	0.01	0.05	0.01	0.37	0.18	0.50
	M4		0.22	0.01	0.05	0.01	0.37	0.28	0.60
	M5		0.11	0.01	0.05	0.01	0.37	0.17	0.49
	M6		0.11	0.01	0.05	0.01	0.37	0.17	0.49
LTE Band 41	M1		0.25	0.01	0.05	0.01	0.37	0.31	0.63
	M2		0.25	0.01	0.05	0.01	0.37	0.31	0.63
	M3		0.13	0.01	0.05	0.01	0.37	0.19	0.51
	M4		0.24	0.01	0.05	0.01	0.37	0.30	0.62
	M5		0.12	0.01	0.05	0.01	0.37	0.18	0.50
	M6		0.12	0.01	0.05	0.01	0.37	0.18	0.50
LTE Band 48	M1		0.20	0.01	0.05	0.01	0.37	0.26	0.58
	M2		0.19	0.01	0.05	0.01	0.37	0.25	0.57
	M3		0.04	0.01	0.05	0.01	0.37	0.10	0.42
	M4		0.19	0.01	0.05	0.01	0.37	0.25	0.57
	M5		0.04	0.01	0.05	0.01	0.37	0.10	0.42
	M6		0.04	0.01	0.05	0.01	0.37	0.10	0.42
LTE Band 66	M1		0.81	0.01	0.05	0.01	0.37	0.87	1.19
	M2		0.80	0.01	0.05	0.01	0.37	0.86	1.18
	M3		0.05	0.01	0.05	0.01	0.37	0.11	0.43
	M4		0.79	0.01	0.05	0.01	0.37	0.85	1.17
	M5		0.05	0.01	0.05	0.01	0.37	0.11	0.43
	M6		0.05	0.01	0.05	0.01	0.37	0.11	0.43

WWAN Band	Antenna	Exposure Position	1	2	3	4	5	1+2+3 Summed 1g SAR (W/kg)	1+4+5 Summed 1g SAR (W/kg)
			WWAN	2.4GHz Wi-Fi W1	2.4GHz Wi-Fi W2	5GHz Wi-Fi W1	5GHz Wi-Fi W2		
			1g SAR (W/kg)	1g SAR (W/kg)	1g SAR (W/kg)	1g SAR (W/kg)	1g SAR (W/kg)		
LTE Band 71	M1	Back	0.45	0.01	0.05	0.01	0.37	0.51	0.83
	M2		0.44	0.01	0.05	0.01	0.37	0.50	0.82
	M3		0.10	0.01	0.05	0.01	0.37	0.16	0.48
	M4		0.44	0.01	0.05	0.01	0.37	0.50	0.82
	M5		0.10	0.01	0.05	0.01	0.37	0.16	0.48
	M6		0.10	0.01	0.05	0.01	0.37	0.16	0.48
FR1 Band n2	M1		0.22	0.01	0.05	0.01	0.37	0.28	0.60
	M2		0.21	0.01	0.05	0.01	0.37	0.27	0.59
	M3		0.01	0.01	0.05	0.01	0.37	0.07	0.39
	M4		0.22	0.01	0.05	0.01	0.37	0.28	0.60
	M5		0.01	0.01	0.05	0.01	0.37	0.07	0.39
	M6		0.01	0.01	0.05	0.01	0.37	0.07	0.39
FR1 Band n5	M1		0.26	0.01	0.05	0.01	0.37	0.32	0.64
	M2		0.25	0.01	0.05	0.01	0.37	0.31	0.63
	M3		0.05	0.01	0.05	0.01	0.37	0.11	0.43
	M4		0.23	0.01	0.05	0.01	0.37	0.29	0.61
	M5		0.04	0.01	0.05	0.01	0.37	0.10	0.42
	M6		0.04	0.01	0.05	0.01	0.37	0.10	0.42
FR1 Band n7	M1		0.45	0.01	0.05	0.01	0.37	0.51	0.83
	M2		0.41	0.01	0.05	0.01	0.37	0.47	0.79
	M3		0.14	0.01	0.05	0.01	0.37	0.20	0.52
	M4		0.43	0.01	0.05	0.01	0.37	0.49	0.81
	M5		0.14	0.01	0.05	0.01	0.37	0.20	0.52
	M6		0.13	0.01	0.05	0.01	0.37	0.19	0.51
FR1 Band n12	M1		0.33	0.01	0.05	0.01	0.37	0.39	0.71
	M2		0.31	0.01	0.05	0.01	0.37	0.37	0.69
	M3		0.08	0.01	0.05	0.01	0.37	0.14	0.46
	M4		0.31	0.01	0.05	0.01	0.37	0.37	0.69
	M5		0.07	0.01	0.05	0.01	0.37	0.13	0.45
	M6		0.07	0.01	0.05	0.01	0.37	0.13	0.45
FR1 Band n25	M1		0.43	0.01	0.05	0.01	0.37	0.49	0.81
	M2		0.39	0.01	0.05	0.01	0.37	0.45	0.77
	M3		0.04	0.01	0.05	0.01	0.37	0.10	0.42
	M4		0.42	0.01	0.05	0.01	0.37	0.48	0.80
	M5		0.04	0.01	0.05	0.01	0.37	0.10	0.42
	M6		0.04	0.01	0.05	0.01	0.37	0.10	0.42
FR1 Band n38	M1		0.48	0.01	0.05	0.01	0.37	0.54	0.86
	M2		0.45	0.01	0.05	0.01	0.37	0.51	0.83
	M3		0.09	0.01	0.05	0.01	0.37	0.15	0.47
	M4		0.44	0.01	0.05	0.01	0.37	0.50	0.82
	M5		0.09	0.01	0.05	0.01	0.37	0.15	0.47
	M6		0.09	0.01	0.05	0.01	0.37	0.15	0.47
FR1 Band n48	M1		0.11	0.01	0.05	0.01	0.37	0.17	0.49
	M2		0.10	0.01	0.05	0.01	0.37	0.16	0.48
	M3		0.02	0.01	0.05	0.01	0.37	0.08	0.40
	M4		0.11	0.01	0.05	0.01	0.37	0.17	0.49
	M5		0.01	0.01	0.05	0.01	0.37	0.07	0.39
	M6		0.01	0.01	0.05	0.01	0.37	0.07	0.39

WWAN Band	Antenna	Exposure Position	1	2	3	4	5	1+2+3 Summed 1g SAR (W/kg)	1+4+5 Summed 1g SAR (W/kg)
			WWAN	2.4GHz Wi-Fi W1	2.4GHz Wi-Fi W2	5GHz Wi-Fi W1	5GHz Wi-Fi W2		
			1g SAR (W/kg)	1g SAR (W/kg)	1g SAR (W/kg)	1g SAR (W/kg)	1g SAR (W/kg)		
FR1 Band n66	M1	Back	0.35	0.01	0.05	0.01	0.37	0.41	0.73
	M2		0.31	0.01	0.05	0.01	0.37	0.37	0.69
	M3		0.02	0.01	0.05	0.01	0.37	0.08	0.40
	M4		0.33	0.01	0.05	0.01	0.37	0.39	0.71
	M5		0.02	0.01	0.05	0.01	0.37	0.08	0.40
	M6		0.02	0.01	0.05	0.01	0.37	0.08	0.40
FR1 Band n71	M1		0.29	0.01	0.05	0.01	0.37	0.35	0.67
	M2		0.24	0.01	0.05	0.01	0.37	0.30	0.62
	M3		0.05	0.01	0.05	0.01	0.37	0.11	0.43
	M4		0.26	0.01	0.05	0.01	0.37	0.32	0.64
	M5		0.04	0.01	0.05	0.01	0.37	0.10	0.42
	M6		0.04	0.01	0.05	0.01	0.37	0.10	0.42
FR1 Band n77	M1		0.15	0.01	0.05	0.01	0.37	0.21	0.53
	M2		0.13	0.01	0.05	0.01	0.37	0.19	0.51
	M3		0.03	0.01	0.05	0.01	0.37	0.09	0.41
	M4		0.14	0.01	0.05	0.01	0.37	0.20	0.52
	M5		0.05	0.01	0.05	0.01	0.37	0.11	0.43
	M6		0.05	0.01	0.05	0.01	0.37	0.11	0.43

The worst case summation is WCDMA Band 4 with 5 GHz WiFi (MIMO). The value is 1.68 W/kg which is above the limit. Therefore, the separation ratio must be performed.

The separation ratio is calculated below.

Distance between M1-W1 185 mm
Distance between M1-W2 52 mm

Simultaneous Separation Ratio Calculation is based on each antenna pair. The formula is listed below.

$(SAR_1 + SAR_2)^{1.5}/R_i \leq 0.04$ rounded to two digits

M1 Maximum power is 1.30 W/kg

W1 Maximum power for WiFi is 0.01 W/kg

W2 Maximum power for WiFi is 0.37 W/kg

$M1-W1(1.30+0.01)^{1.5}/185 = 0.01$

$M1-W2(1.30+0.37)^{1.5}/52 = 0.04$

LTE UL CA	Antenna	Exposure Position	1	2	3	4	5	6	1+2+3+4 Summed 1g SAR (W/kg)	1+2+5+6 Summed 1g SAR (W/kg)
			1 st UL	2 nd UL	2.4GHz Wi-Fi W1	2.4GHz Wi-Fi W2	5GHz Wi-Fi W1	5GHz Wi-Fi W2		
			1g SAR (W/kg)	1g SAR (W/kg)	1g SAR (W/kg)	1g SAR (W/kg)	1g SAR (W/kg)	1g SAR (W/kg)		
12A-4A	M1	Back	0.51	0.84	0.01	0.05	0.01	0.37	1.41	1.73
	M2		0.50	0.83	0.01	0.05	0.01	0.37	1.39	1.71
	M3		0.03	0.05	0.01	0.05	0.01	0.37	0.14	0.46
	M4		0.51	0.83	0.01	0.05	0.01	0.37	1.40	1.72
	M5		0.03	0.04	0.01	0.05	0.01	0.37	0.13	0.45
	M6		0.03	0.07	0.01	0.05	0.01	0.37	0.16	0.48
12A-2A	M1		0.51	0.51	0.01	0.05	0.01	0.37	1.08	1.40
	M2		0.50	0.51	0.01	0.05	0.01	0.37	1.07	1.39
	M3		0.03	0.09	0.01	0.05	0.01	0.37	0.18	0.50
	M4		0.51	0.51	0.01	0.05	0.01	0.37	1.08	1.40
	M5		0.03	0.09	0.01	0.05	0.01	0.37	0.18	0.50
	M6		0.03	0.09	0.01	0.05	0.01	0.37	0.18	0.50
13A-2A	M1		0.12	0.51	0.01	0.05	0.01	0.37	0.69	1.01
	M2		0.11	0.51	0.01	0.05	0.01	0.37	0.68	1.00
	M3		0.05	0.09	0.01	0.05	0.01	0.37	0.20	0.52
	M4		0.11	0.51	0.01	0.05	0.01	0.37	0.68	1.00
	M5		0.05	0.09	0.01	0.05	0.01	0.37	0.20	0.52
	M6		0.05	0.09	0.01	0.05	0.01	0.37	0.20	0.52
13A-4A	M1		0.12	0.84	0.01	0.05	0.01	0.37	1.02	1.34
	M2		0.11	0.83	0.01	0.05	0.01	0.37	1.00	1.32
	M3		0.05	0.05	0.01	0.05	0.01	0.37	0.16	0.48
	M4		0.11	0.83	0.01	0.05	0.01	0.37	1.00	1.32
	M5		0.05	0.04	0.01	0.05	0.01	0.37	0.15	0.47
	M6		0.05	0.07	0.01	0.05	0.01	0.37	0.18	0.50
5A-2A	M1		0.42	0.51	0.01	0.05	0.01	0.37	0.99	1.31
	M2		0.42	0.51	0.01	0.05	0.01	0.37	0.99	1.31
	M3		0.07	0.09	0.01	0.05	0.01	0.37	0.22	0.54
	M4		0.41	0.51	0.01	0.05	0.01	0.37	0.98	1.30
	M5	0.07	0.09	0.01	0.05	0.01	0.37	0.22	0.54	
	M6	0.07	0.09	0.01	0.05	0.01	0.37	0.22	0.54	
5A-4A	M1	0.42	0.84	0.01	0.05	0.01	0.37	1.32	1.64	
	M2	0.42	0.83	0.01	0.05	0.01	0.37	1.31	1.63	
	M3	0.07	0.05	0.01	0.05	0.01	0.37	0.18	0.50	
	M4	0.41	0.83	0.01	0.05	0.01	0.37	1.30	1.62	
	M5	0.07	0.04	0.01	0.05	0.01	0.37	0.17	0.49	
	M6	0.07	0.07	0.01	0.05	0.01	0.37	0.20	0.52	
66A-2A	M1	0.81	0.51	0.01	0.05	0.01	0.37	1.38	1.70	
	M2	0.80	0.51	0.01	0.05	0.01	0.37	1.37	1.69	
	M3	0.05	0.09	0.01	0.05	0.01	0.37	0.20	0.52	
	M4	0.79	0.51	0.01	0.05	0.01	0.37	1.36	1.68	
	M5	0.05	0.09	0.01	0.05	0.01	0.37	0.20	0.52	
	M6	0.05	0.09	0.01	0.05	0.01	0.37	0.20	0.52	
66A-5A	M1	0.81	0.42	0.01	0.05	0.01	0.37	1.29	1.61	
	M2	0.80	0.42	0.01	0.05	0.01	0.37	1.28	1.60	
	M3	0.05	0.07	0.01	0.05	0.01	0.37	0.18	0.50	
	M4	0.79	0.41	0.01	0.05	0.01	0.37	1.26	1.58	
	M5	0.05	0.07	0.01	0.05	0.01	0.37	0.18	0.50	
	M6	0.05	0.07	0.01	0.05	0.01	0.37	0.18	0.50	
7A-5A	M1	0.76	0.42	0.01	0.05	0.01	0.37	1.24	1.56	
	M2	0.74	0.42	0.01	0.05	0.01	0.37	1.22	1.54	
	M3	0.29	0.07	0.01	0.05	0.01	0.37	0.42	0.74	
	M4	0.75	0.41	0.01	0.05	0.01	0.37	1.22	1.54	
	M5	0.27	0.07	0.01	0.05	0.01	0.37	0.40	0.72	
	M6	0.28	0.07	0.01	0.05	0.01	0.37	0.41	0.73	

LTE UL CA	Antenna	Exposure Position	1	2	3	4	5	6	1+2+3+4 Summed 1g SAR (W/kg)	1+2+5+6 Summed 1g SAR (W/kg)				
			1 ST UL	2 nd UL	2.4GHz Wi-Fi W1	2.4GHz Wi-Fi W2	5GHz Wi-Fi W1	5GHz Wi-Fi W2						
			1g SAR (W/kg)	1g SAR (W/kg)	1g SAR (W/kg)	1g SAR (W/kg)	1g SAR (W/kg)	1g SAR (W/kg)						
12A-n66A	M1	Back	0.51	0.35	0.01	0.05	0.01	0.37	0.92	1.24				
	M2		0.50	0.31	0.01	0.05	0.01	0.37	0.87	1.19				
	M3		0.03	0.02	0.01	0.05	0.01	0.37	0.11	0.43				
	M4		0.51	0.33	0.01	0.05	0.01	0.37	0.90	1.22				
	M5		0.03	0.02	0.01	0.05	0.01	0.37	0.11	0.43				
	M6		0.03	0.02	0.01	0.05	0.01	0.37	0.11	0.43				
12A-n2A	M1		Back	0.51	0.22	0.01	0.05	0.01	0.37	0.79	1.11			
	M2			0.50	0.21	0.01	0.05	0.01	0.37	0.77	1.09			
	M3			0.03	0.01	0.01	0.05	0.01	0.37	0.10	0.42			
	M4			0.51	0.22	0.01	0.05	0.01	0.37	0.79	1.11			
	M5			0.03	0.01	0.01	0.05	0.01	0.37	0.10	0.42			
	M6			0.03	0.01	0.01	0.05	0.01	0.37	0.10	0.42			
13A-n66A	M1			Back	0.12	0.35	0.01	0.05	0.01	0.37	0.53	0.85		
	M2				0.11	0.31	0.01	0.05	0.01	0.37	0.48	0.80		
	M3				0.05	0.02	0.01	0.05	0.01	0.37	0.13	0.45		
	M4				0.11	0.33	0.01	0.05	0.01	0.37	0.50	0.82		
	M5				0.05	0.02	0.01	0.05	0.01	0.37	0.13	0.45		
	M6				0.05	0.02	0.01	0.05	0.01	0.37	0.13	0.45		
13A-n2A	M1				Back	0.12	0.22	0.01	0.05	0.01	0.37	0.40	0.72	
	M2					0.11	0.21	0.01	0.05	0.01	0.37	0.38	0.70	
	M3					0.05	0.01	0.01	0.05	0.01	0.37	0.12	0.44	
	M4					0.11	0.22	0.01	0.05	0.01	0.37	0.39	0.71	
	M5					0.05	0.01	0.01	0.05	0.01	0.37	0.12	0.44	
	M6					0.05	0.01	0.01	0.05	0.01	0.37	0.12	0.44	
2A-n5A	M1					Back	0.51	0.26	0.01	0.05	0.01	0.37	0.83	1.15
	M2						0.51	0.25	0.01	0.05	0.01	0.37	0.82	1.14
	M3						0.09	0.05	0.01	0.05	0.01	0.37	0.20	0.52
	M4						0.51	0.23	0.01	0.05	0.01	0.37	0.80	1.12
	M5	0.09					0.04	0.01	0.05	0.01	0.37	0.19	0.51	
	M6	0.09					0.04	0.01	0.05	0.01	0.37	0.19	0.51	
2A-n71A	M1	Back					0.51	0.29	0.01	0.05	0.01	0.37	0.86	1.18
	M2						0.51	0.24	0.01	0.05	0.01	0.37	0.81	1.13
	M3						0.09	0.05	0.01	0.05	0.01	0.37	0.20	0.52
	M4						0.51	0.26	0.01	0.05	0.01	0.37	0.83	1.15
	M5		0.09				0.04	0.01	0.05	0.01	0.37	0.19	0.51	
	M6		0.09				0.04	0.01	0.05	0.01	0.37	0.19	0.51	
5A-n66A	M1		Back				0.42	0.35	0.01	0.05	0.01	0.37	0.83	1.15
	M2						0.42	0.31	0.01	0.05	0.01	0.37	0.79	1.11
	M3						0.07	0.02	0.01	0.05	0.01	0.37	0.15	0.47
	M4						0.41	0.33	0.01	0.05	0.01	0.37	0.80	1.12
	M5			0.07			0.02	0.01	0.05	0.01	0.37	0.15	0.47	
	M6			0.07			0.02	0.01	0.05	0.01	0.37	0.15	0.47	
5A-n2A	M1			Back			0.42	0.22	0.01	0.05	0.01	0.37	0.70	1.02
	M2						0.42	0.21	0.01	0.05	0.01	0.37	0.69	1.01
	M3						0.07	0.01	0.01	0.05	0.01	0.37	0.14	0.46
	M4						0.41	0.22	0.01	0.05	0.01	0.37	0.69	1.01
	M5				0.07		0.01	0.01	0.05	0.01	0.37	0.14	0.46	
	M6				0.07		0.01	0.01	0.05	0.01	0.37	0.14	0.46	
66A-n5A	M1				Back		0.81	0.26	0.01	0.05	0.01	0.37	1.13	1.45
	M2						0.80	0.25	0.01	0.05	0.01	0.37	1.11	1.43
	M3						0.05	0.05	0.01	0.05	0.01	0.37	0.16	0.48
	M4						0.79	0.23	0.01	0.05	0.01	0.37	1.08	1.40
	M5					0.05	0.04	0.01	0.05	0.01	0.37	0.15	0.47	
	M6					0.05	0.04	0.01	0.05	0.01	0.37	0.15	0.47	

LTE UL CA	Antenna	Exposure Position	1	2	3	4	5	6	1+2+3+4 Summed 1g SAR (W/kg)	1+2+5+6 Summed 1g SAR (W/kg)
			1 st UL	2 nd UL	2.4GHz Wi-Fi W1	2.4GHz Wi-Fi W2	5GHz Wi-Fi W1	5GHz Wi-Fi W2		
			1g SAR (W/kg)	1g SAR (W/kg)	1g SAR (W/kg)	1g SAR (W/kg)	1g SAR (W/kg)	1g SAR (W/kg)		
66A-n71A	M1	Back	0.81	0.29	0.01	0.05	0.01	0.37	1.16	1.48
	M2		0.80	0.24	0.01	0.05	0.01	0.37	1.10	1.42
	M3		0.05	0.05	0.01	0.05	0.01	0.37	0.16	0.48
	M4		0.79	0.26	0.01	0.05	0.01	0.37	1.11	1.43
	M5		0.05	0.04	0.01	0.05	0.01	0.37	0.15	0.47
	M6		0.05	0.04	0.01	0.05	0.01	0.37	0.15	0.47
7A-n5A	M1		0.76	0.26	0.01	0.05	0.01	0.37	1.08	1.40
	M2		0.74	0.25	0.01	0.05	0.01	0.37	1.05	1.37
	M3		0.29	0.05	0.01	0.05	0.01	0.37	0.40	0.72
	M4		0.75	0.23	0.01	0.05	0.01	0.37	1.04	1.36
	M5		0.27	0.04	0.01	0.05	0.01	0.37	0.37	0.69
	M6		0.28	0.04	0.01	0.05	0.01	0.37	0.38	0.70
7A-n71A	M1		0.76	0.29	0.01	0.05	0.01	0.37	1.11	1.43
	M2		0.74	0.24	0.01	0.05	0.01	0.37	1.04	1.36
	M3		0.29	0.05	0.01	0.05	0.01	0.37	0.40	0.72
	M4		0.75	0.26	0.01	0.05	0.01	0.37	1.07	1.39
	M5		0.27	0.04	0.01	0.05	0.01	0.37	0.37	0.69
	M6		0.28	0.04	0.01	0.05	0.01	0.37	0.38	0.70

The worst case value above the limit for each of the antennas M1, M2, M3 and M4 are 1.73 W/kg, 1.63 W/kg, 1.72 W/kg & 1.68 W/kg, respectively. Therefore the separation ratio is performed below.

The separation ratio is calculated below.

Distance between M1-W1	185 mm
Distance between M1-W2	52 mm
Distance between M2-W1	40 mm
Distance between M2-W2	180 mm
Distance between M4-W1	69 mm
Distance between M4-W2	173 mm

Simultaneous Separation Ratio Calculation is based on each antenna pair. The formula is listed below.

$$(SAR_1 + SAR_2)^{1.5}/R_i \leq 0.04 \text{ rounded to two digits}$$

M1 Maximum power is 1.35 W/kg

M2 Maximum power is 1.31 W/kg

M4 Maximum power is 1.34 W/kg

W1 Maximum power for WiFi is 0.01 W/kg

W2 Maximum power for WiFi is 0.37 W/kg

$$M1-W1(1.35+0.01)^{1.5}/185 = 0.01$$

$$M1-W2(1.35+0.37)^{1.5}/52 = 0.04$$

$$M2-W1(1.31+0.01)^{1.5}/40 = 0.04$$

$$M2-W2(1.31+0.37)^{1.5}/180 = 0.01$$

$$M4-W1(1.34+0.01)^{1.5}/69 = 0.02$$

$$M4-W2(1.34+0.37)^{1.5}/173 = 0.01$$

11. Test Equipment List

Table 11.1 Equipment Specifications

Type	Calibration Due Date	Calibration Done Date	Serial Number
Staubli Robot TX60L	N/A	N/A	F07/55M6A1/A/01
Measurement Controller CS8c	N/A	N/A	1012
ELI5 Flat Phantom	N/A	N/A	1251
Device Holder	N/A	N/A	N/A
Data Acquisition Electronics 4	08/16/2023	08/16/2022	759
SPEAG E-Field Probe EX3DV4	08/28/2023	08/28/2022	3693
Speag Validation Dipole D750V2	06/04/2024	06/04/2021	1053
Speag Validation Dipole D900V2	06/04/2024	06/04/2021	1d128
Speag Validation Dipole D1750V2	06/03/2024	06/03/2021	1061
Speag Validation Dipole D1900V2	06/04/2024	06/04/2021	5d147
Speag Validation Dipole D2550V2	06/03/2024	06/03/2021	1003
Speag Validation Dipole D3300V2	01/17/2024	01/17/2022	1032
Speag Validation Dipole D3500V2	04/13/2024	04/13/2021	1061
Speag Validation Dipole D3700V2	04/13/2024	04/13/2021	1024
Speag Validation Dipole D3900V2	01/13/2024	01/13/2022	1082
Speag Validation Dipole D4200V2	01/13/2024	01/13/2022	1025
Agilent N1911A Power Meter	03/14/2024	03/14/2023	GB45100254
Agilent N1922A Power Sensor	03/13/2024	03/13/2023	MY45240464
Agilent (HP) 8596E Spectrum Analyzer	03/13/2024	03/13/2023	3826A01468
Agilent (HP) 83752A Synthesized Sweeper	03/14/2024	03/14/2023	3610A01048
Agilent (HP) 8753C Vector Network Analyzer	03/14/2024	03/14/2023	3135A01724
Agilent (HP) 85047A S-Parameter Test Set	03/14/2024	03/14/2023	2904A00595
Copper Mountain R140 Vector Reflectometer	03/13/2024	03/13/2023	21390004
Anritsu MT8000A	N/A	N/A	6262186412
Aprel Dielectric Probe Assembly	N/A	N/A	0011
Head Equivalent Matter (750 MHz)	N/A	N/A	N/A
Head Equivalent Matter (900 MHz)	N/A	N/A	N/A
Head Equivalent Matter (1750 MHz)	N/A	N/A	N/A
Head Equivalent Matter (1900 MHz)	N/A	N/A	N/A
Head Equivalent Matter (2450 MHz)	N/A	N/A	N/A
Head Equivalent Matter (2550 MHz)	N/A	N/A	N/A
Head Equivalent Matter (3-6 GHz)	N/A	N/A	N/A

12. Conclusion

The SAR measurement indicates that the EUT complies with the RF radiation exposure limits of the FCC/IC. These measurements are taken to simulate the RF effects exposure under worst-case conditions. Precise laboratory measures were taken to assure repeatability of the tests. The tested device complies with the requirements in respect to all parameters subject to the test. The test results and statements relate only to the item(s) tested.

Please note that the absorption and distribution of electromagnetic energy in the body is a very complex phenomena that depends on the mass, shape, and size of the body; the orientation of the body with respect to the field vectors; and, the electrical properties of both the body and the environment. Other variables that may play a substantial role in possible biological effects are those that characterize the environment (e.g. ambient temperature, air velocity, relative humidity, and body insulation) and those that characterize the individual (e.g. age, gender, activity level, debilitation, or disease). Because innumerable factors may interact to determine the specific biological outcome of an exposure to electromagnetic fields, any protection guide shall consider maximal amplification of biological effects as a result of field-body interactions, environmental conditions, and physiological variables.

13. References

- [1] Federal Communications Commission, ET Docket 93-62, Guidelines for Evaluating the Environmental Effects of Radio Frequency Radiation, August 1996
- [2] ANSI/IEEE C95.1 – 1992, American National Standard Safety Levels with respect to Human Exposure to Radio Frequency Electromagnetic Fields, 300kHz to 100GHz, New York: IEEE, 1992.
- [3] ANSI/IEEE C95.3 – 1992, IEEE Recommended Practice for the Measurement of Potentially Hazardous Electromagnetic Fields – RF and Microwave, New York: IEEE, 1992.
- [4] International Electrotechnical Commission, IEC 62209-2 (Edition 1.0), Human Exposure to radio frequency fields from hand-held and body mounted wireless communication devices – Human models, instrumentation, and procedures – Part 2: Procedure to determine the specific absorption rate (SAR) for wireless communication devices used in close proximity to the human body (frequency range of 30 MHz to 6 GHz), March 2010.
- [5] IEEE Standard 1528 – 2013, IEEE Recommended Practice for Determining the Peak-Spatial Average Specific Absorption Rate (SAR) in the Human Head from Wireless Communication Devices: Measurement Techniques, June 2013.
- [6] Industry Canada, RSS – 102 Issue 5, Radio Frequency Exposure Compliance of Radiocommunication Apparatus (All Frequency Bands), March 2015.
- [7] Health Canada, Safety Code 6, Limits of Human Exposure to Radiofrequency Electromagnetic Fields in the Frequency Range from 3kHz to 300 GHz, 2009.

Appendix A – System Validation Plots and Data

 Test Result for UIM Dielectric Parameter
 Mon 12/Jun/2023
 Freq Frequency(GHz)
 FCC_eH Limits for Head Epsilon
 FCC_sH Limits for Head Sigma
 Test_e Epsilon of UIM
 Test_s Sigma of UIM

Freq	FCC_eH	FCC_sH	Test_e	Test_s
0.6600	42.41	0.88	41.46	0.88
0.6700	42.36	0.89	41.41	0.88
0.6730	42.345	0.89	41.401	0.88*
0.6800	42.31	0.89	41.38	0.88
0.6805	42.307	0.89	41.377	0.881*
0.6880	42.262	0.89	41.332	0.888*
0.6900	42.25	0.89	41.32	0.89
0.7000	42.20	0.89	41.27	0.89
0.7065	42.168	0.89	41.225	0.897*
0.7075	42.163	0.89	41.218	0.898*
0.7085	42.158	0.89	41.211	0.899*
0.7100	42.15	0.89	41.20	0.90
0.7200	42.10	0.89	41.15	0.91
0.7300	42.05	0.89	41.08	0.92
0.7400	41.99	0.89	41.02	0.92
0.7500	41.94	0.89	40.97	0.93
0.7600	41.89	0.89	40.91	0.94
0.7700	41.84	0.89	40.85	0.95
0.7800	41.79	0.90	40.79	0.95
0.7900	41.73	0.90	40.73	0.96
0.8000	41.68	0.90	40.69	0.96

* value interpolated

 Test Result for UIM Dielectric Parameter
 Tue 13/Jun/2023
 Freq Frequency(GHz)
 eH Limits for Head Epsilon
 sH Limits for Head Sigma
 Test_e Epsilon of UIM
 Test_s Sigma of UIM

Freq	eH	sH	Test_e	Test_s
0.8000	41.68	0.90	41.14	0.92
0.8100	41.63	0.90	41.09	0.93
0.8200	41.58	0.90	41.03	0.94
0.8300	41.53	0.90	41.08	0.94
0.8340	41.518	0.904	41.068	0.944*
0.8365	41.511	0.907	41.061	0.947*
0.8390	41.503	0.909	41.053	0.949*
0.8400	41.50	0.91	41.05	0.95
0.8440	41.50	0.914	41.042	0.954*
0.8500	41.50	0.92	41.03	0.96
0.8600	41.50	0.93	41.01	0.97
0.8700	41.50	0.94	40.99	0.98
0.8800	41.50	0.95	40.98	0.99
0.8900	41.50	0.96	40.97	1.00
0.8975	41.50	0.968	40.963	1.008*
0.9000	41.50	0.97	40.96	1.01
0.9050	41.50	0.975	40.955	1.015*
0.9100	41.50	0.98	40.95	1.02
0.9200	41.49	0.98	40.94	1.02

* value interpolated

Test Result for UIM Dielectric Parameter

Thu 15/Jun/2023

Freq Frequency(GHz)

eH Limits for Head Epsilon

sH Limits for Head Sigma

Test_e Epsilon of UIM

Test_s Sigma of UIM

Freq	eH	sH	Test_e	Test_s
1.7000	40.16	1.34	39.16	1.35
1.7100	40.14	1.35	39.14	1.36
1.7200	40.13	1.35	39.12	1.37
1.7300	40.11	1.36	39.10	1.37
1.7400	40.09	1.37	39.08	1.38
1.7450	40.085	1.37	39.07	1.385*
1.7475	40.083	1.37	39.065	1.388*
1.7500	40.08	1.37	39.06	1.39
1.7600	40.06	1.38	39.04	1.40
1.7700	40.05	1.38	39.02	1.41
1.7750	40.04	1.385	39.01	1.41*
1.7800	40.03	1.39	39.00	1.41
1.7900	40.02	1.39	38.98	1.42

* value interpolated

Test Result for UIM Dielectric Parameter

Fri 16/Jun/2023

Freq Frequency(GHz)

eH Limits for Head Epsilon

sH Limits for Head Sigma

Test_e Epsilon of UIM

Test_s Sigma of UIM

Freq	eH	sH	Test_e	Test_s
1.8500	40.00	1.40	39.65	1.40
1.8600	40.00	1.40	39.63	1.41
1.8700	40.00	1.40	39.61	1.41
1.8800	40.00	1.40	39.59	1.42
1.8825	40.00	1.40	39.585	1.42*
1.8900	40.00	1.40	39.57	1.42
1.9000	40.00	1.40	39.55	1.42
1.9050	40.00	1.40	39.54	1.425*
1.9100	40.00	1.40	39.53	1.43
1.9200	40.00	1.40	39.52	1.44
1.9300	40.00	1.40	39.51	1.44
1.9400	40.00	1.40	39.49	1.44
1.9500	40.00	1.40	39.48	1.45
1.9600	40.00	1.40	39.46	1.45
1.9700	40.00	1.40	39.45	1.46
1.9800	40.00	1.40	39.44	1.46
1.9900	40.00	1.40	39.42	1.47

* value interpolated

Test Result for UIM Dielectric Parameter

Mon 19/Jun/2023

Freq Frequency(GHz)

FCC_eH Limits for Head Epsilon

FCC_sH Limits for Head Sigma

Test_e Epsilon of UIM

Test_s Sigma of UIM

Freq	FCC_eH	FCC_sH	Test_e	Test_s
2.4900	39.15	1.84	38.88	1.84
2.5000	39.14	1.85	38.86	1.85
2.5100	39.12	1.87	38.83	1.86
2.5200	39.11	1.88	38.81	1.88
2.5300	39.10	1.89	38.79	1.89
2.5350	39.095	1.895	38.775	1.895*
2.5400	39.09	1.90	38.76	1.90
2.5500	39.07	1.91	38.74	1.92
2.5600	39.06	1.92	38.72	1.93
2.5700	39.05	1.93	38.69	1.94
2.5800	39.03	1.94	38.67	1.96
2.5900	39.02	1.95	38.64	1.97
2.5950	39.015	1.955	38.645	1.97*
2.6000	39.01	1.96	38.65	1.97
2.6100	39.00	1.97	38.63	1.98
2.6200	38.98	1.99	38.62	1.99
2.6300	38.97	2.00	38.60	2.00

* value interpolated

Test Result for UIM Dielectric Parameter

Tue 20/Jun/2023

Freq Frequency(GHz)

FCC_eH Limits for Head Epsilon

FCC_sH Limits for Head Sigma

Test_e Epsilon of UIM

Test_s Sigma of UIM

Freq	FCC_eH	FCC_sH	Test_e	Test_s
3.3000	38.16	2.70	37.59	2.73
3.3100	38.15	2.71	37.58	2.74*
3.3200	38.14	2.72	37.57	2.75
3.3400	38.12	2.74	37.55	2.77
3.3600	38.09	2.76	37.52	2.79
3.3800	38.07	2.78	37.50	2.81
3.3980	38.052	2.798	37.482	2.828*
3.4000	38.05	2.80	37.48	2.83
3.4200	38.02	2.82	37.45	2.85
3.4400	38.00	2.85	37.43	2.88
3.4600	37.98	2.87	37.41	2.90
3.4800	37.95	2.89	37.38	2.92
3.4860	37.944	2.896	37.374	2.926*
3.5000	37.93	2.91	37.36	2.94
3.5200	37.91	2.93	37.34	2.96
3.5400	37.88	2.95	37.31	2.98
3.5600	37.86	2.97	37.29	3.00
3.5740	37.846	2.984	37.276	3.014*
3.5800	37.84	2.99	37.27	3.02
3.6000	37.81	3.02	37.24	3.05
3.6033	37.807	3.023	37.237	3.053*
3.6200	37.79	3.04	37.22	3.07
3.6250	37.785	3.045	37.215	3.075*
3.6400	37.77	3.06	37.20	3.09
3.6467	37.763	3.067	37.193	3.097*
3.6600	37.75	3.08	37.18	3.11
3.6620	37.747	3.082	37.177	3.112*
3.6800	37.72	3.10	37.15	3.13
3.6900	37.71	3.11	37.14	3.14*
3.7000	37.70	3.12	37.13	3.15
3.7200	37.68	3.14	37.11	3.17
3.7400	37.65	3.17	37.08	3.20
3.7500	37.64	3.18	37.07	3.21*
3.7600	37.63	3.19	37.06	3.22
3.7800	37.61	3.21	37.04	3.24
3.8000	37.58	3.23	37.01	3.26
3.8200	37.56	3.25	36.99	3.28
3.8380	37.542	3.268	36.972	3.298*
3.8400	37.54	3.27	36.97	3.30
3.8600	37.51	3.29	36.94	3.32
3.8800	37.49	3.31	36.92	3.34
3.9000	37.47	3.34	36.90	3.37
3.9200	37.44	3.36	36.87	3.39
3.9260	37.434	3.366	36.864	3.396*
3.9400	37.42	3.38	36.85	3.41
3.9600	37.40	3.40	36.83	3.43
3.9800	37.37	3.42	36.80	3.45
4.0000	37.35	3.44	36.78	3.47
4.0140	37.336	3.454	36.766	3.484*
4.0200	37.33	3.46	36.76	3.49
4.0400	37.30	3.48	36.73	3.51
4.0600	37.28	3.51	36.71	3.54
4.0800	37.26	3.53	36.69	3.56
4.1000	37.23	3.55	36.66	3.58
4.1020	37.228	3.552	36.658	3.582*
4.1200	37.21	3.57	36.64	3.60
4.1400	37.19	3.59	36.62	3.62
4.1600	37.16	3.61	36.59	3.64
4.1800	37.14	3.63	36.57	3.66
4.1900	37.13	3.64	36.56	3.67*
4.2000	37.12	3.65	36.55	3.68
4.2200	37.09	3.68	36.52	3.71
4.2400	37.07	3.70	36.50	3.73

* value interpolated

RF Exposure Lab

Plot 1

DUT: Dipole 750 MHz D750V3; Type: D750V3; Serial: D750V3 - SN 1053

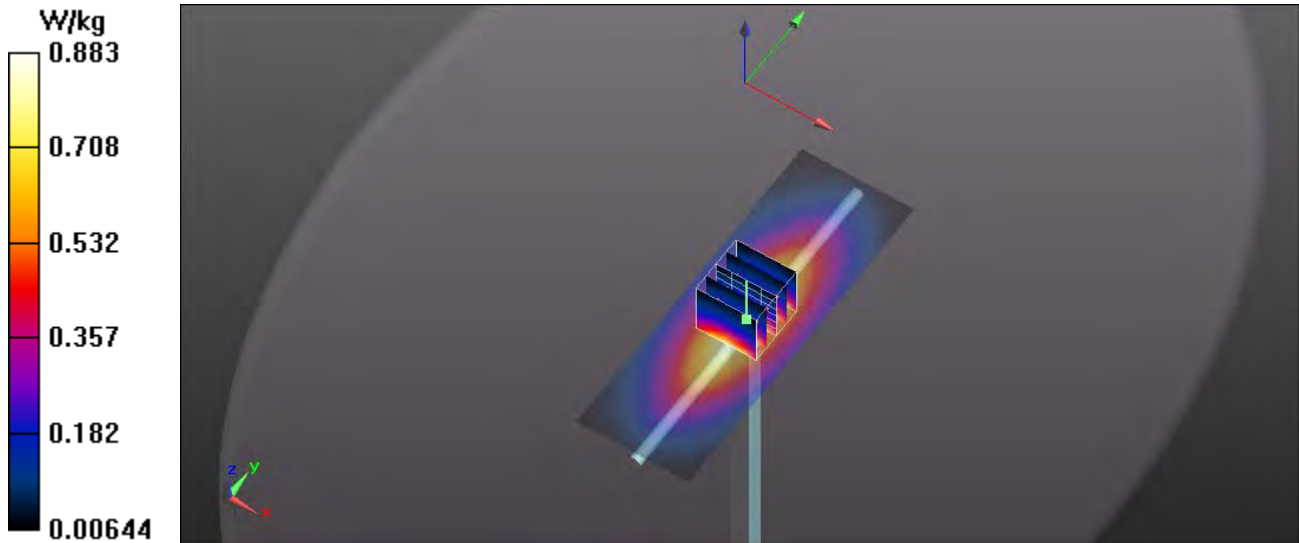
Communication System: CW; Frequency: 750 MHz; Duty Cycle: 1:1
Medium: HSL750; Medium parameters used (interpolated): $f = 750 \text{ MHz}$; $\sigma = 0.93 \text{ S/m}$; $\epsilon_r = 40.97$; $\rho = 1000 \text{ kg/m}^3$
Phantom section: Flat Section

Test Date: Date: 6/12/2023; Ambient Temp: 23 °C; Tissue Temp: 21 °C
Probe: EX3DV4 – SN3693; ConvF(10.46, 10.46, 10.46); Calibrated: 8/28/2022;
Sensor-Surface: 2mm (Mechanical Surface Detection)
Electronics: DAE4 Sn759; Calibrated: 8/16/2023
Phantom: ELI v5.0; Type: QDOVA002AA; Serial: 1251
Measurement SW: DASY52, Version 52.10 (0); SEMCAD X Version 14.6.10 (7417)

Procedure Notes:

750 MHz Head/Verification/Area Scan (41x121x1): Interpolated grid: $dx=1.500 \text{ mm}$, $dy=1.500 \text{ mm}$
Maximum value of SAR (interpolated) = 0.871 W/kg

750 MHz Head/Verification /Zoom Scan (5x5x7)/Cube 0: Measurement grid: $dx=8\text{mm}$, $dy=8\text{mm}$, $dz=5\text{mm}$
Reference Value = 33.452 V/m; Power Drift = -0.01 dB
Peak SAR (extrapolated) = 1.76 mW/g
 $P_{in} = 100 \text{ mW}$
SAR(1 g) = 0.866 mW/g; SAR(10 g) = 0.559 mW/g
Maximum value of SAR (measured) = 0.883 W/kg



RF Exposure Lab

Plot 2

DUT: Dipole 900 MHz D900V2; Type: D900V2; Serial: D900V2 - SN:1d128

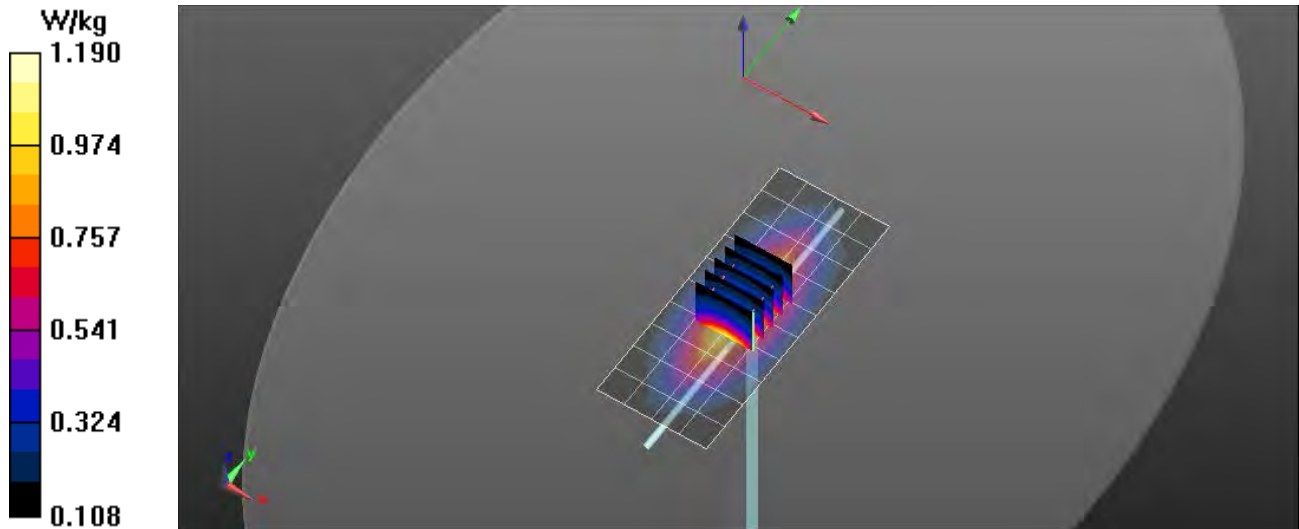
Communication System: CW; Frequency: 900 MHz; Duty Cycle: 1:1
Medium: HSL900; Medium parameters used: $f = 900$ MHz; $\sigma = 1.01$ S/m; $\epsilon_r = 40.96$; $\rho = 1000$ kg/m³
Phantom section: Flat Section

Test Date: Date: 6/13/2023; Ambient Temp: 23 °C; Tissue Temp: 21 °C
Probe: EX3DV4 – SN3693; ConvF(9.99, 9.99, 9.99); Calibrated: 8/28/2022;
Sensor-Surface: 2mm (Mechanical Surface Detection)
Electronics: DAE4 Sn759; Calibrated: 8/16/2023
Phantom: ELI v5.0; Type: QDOVA002AA; Serial: 1251
Measurement SW: DASY52, Version 52.10 (0); SEMCAD X Version 14.6.10 (7417)

Procedure Notes:

900 MHz Head/Verification/Area Scan (5x11x1): Measurement grid: dx=15mm, dy=15mm
Maximum value of SAR (measured) = 1.22 W/kg

900 MHz Head/Verification/Zoom Scan (5x5x7)/Cube 0: Measurement grid: dx=8mm, dy=8mm, dz=5mm
Reference Value = 30.119 V/m; Power Drift = -0.03 dB
Peak SAR (extrapolated) = 1.49 W/kg
 $P_{in} = 100$ mW
SAR(1 g) = 1.16 W/kg; SAR(10 g) = 0.716 W/kg
Maximum value of SAR (measured) = 1.19 W/kg



RF Exposure Lab

Plot 3

DUT: Dipole 1750 MHz D1750V2; Type: D1750V2; Serial: D1750V2 - SN:1061

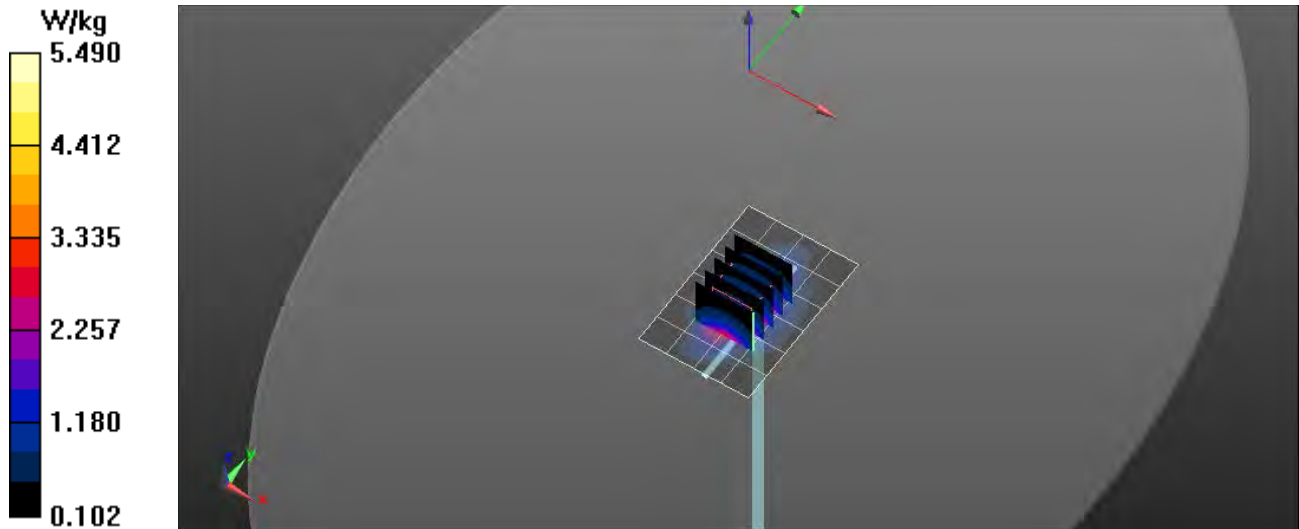
Communication System: CW; Frequency: 1750 MHz; Duty Cycle: 1:1
Medium: HSL1750; Medium parameters used: $f = 1750$ MHz; $\sigma = 1.39$ S/m; $\epsilon_r = 39.06$; $\rho = 1000$ kg/m³
Phantom section: Flat Section

Test Date: Date: 6/15/2023; Ambient Temp: 23 °C; Tissue Temp: 21 °C
Probe: EX3DV4 – SN3693; ConvF(8.83, 8.83, 8.83); Calibrated: 8/28/2022;
Sensor-Surface: 2mm (Mechanical Surface Detection)
Electronics: DAE4 Sn759; Calibrated: 8/16/2023
Phantom: ELI v5.0; Type: QDOVA002AA; Serial: 1251
Measurement SW: DASY52, Version 52.10 (0); SEMCAD X Version 14.6.10 (7417)

Procedure Notes:

1750 MHz Head/Verification/Area Scan (5x7x1): Measurement grid: dx=15mm, dy=15mm
Maximum value of SAR (measured) = 5.46 W/kg

1750 MHz Head/Verification/Zoom Scan (5x5x7)/Cube 0: Measurement grid: dx=8mm, dy=8mm, dz=5mm
Reference Value = 34.885 V/m; Power Drift = -0.01 dB
Peak SAR (extrapolated) = 6.97 W/kg
 $P_{in} = 100$ mW
SAR(1 g) = 3.81 W/kg; SAR(10 g) = 1.99 W/kg
Maximum value of SAR (measured) = 5.47 W/kg



RF Exposure Lab

Plot 4

DUT: Dipole 1900 MHz D1900V2; Type: D1900V2; Serial: D1900V2 - SN: 5d147

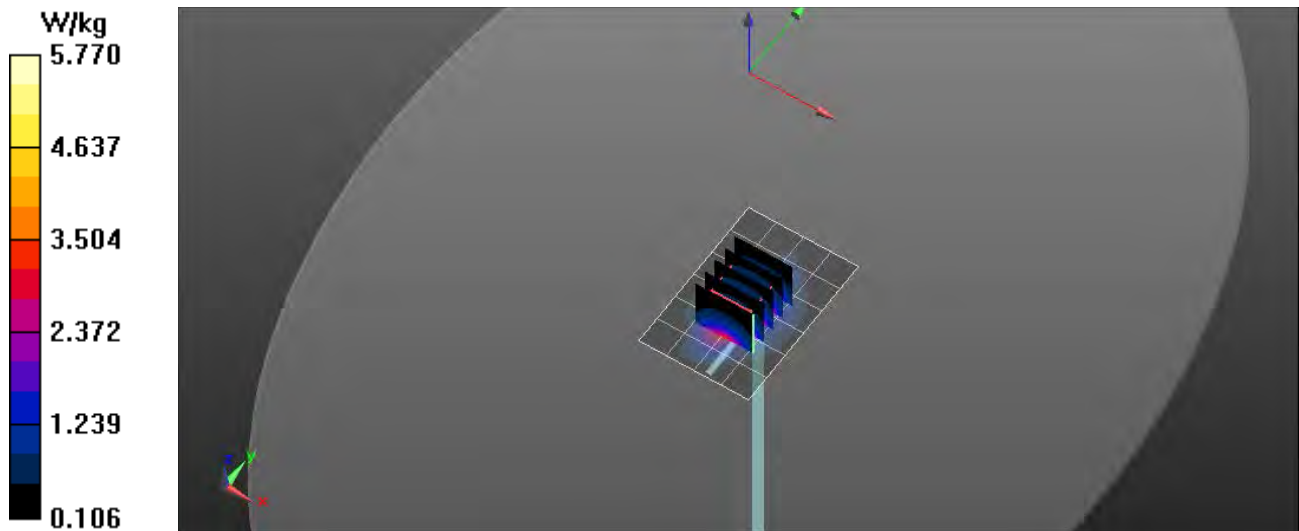
Communication System: CW; Frequency: 1900 MHz; Duty Cycle: 1:1
Medium: HSL1900; Medium parameters used: $f = 1900$ MHz; $\sigma = 1.42$ S/m; $\epsilon_r = 39.55$; $\rho = 1000$ kg/m³
Phantom section: Flat Section

Test Date: Date: 6/16/2023; Ambient Temp: 23 °C; Tissue Temp: 21 °C
Probe: EX3DV4 – SN3693; ConvF(8.43, 8.43, 8.43); Calibrated: 8/28/2022;
Sensor-Surface: 2mm (Mechanical Surface Detection)
Electronics: DAE4 Sn759; Calibrated: 8/16/2023
Phantom: ELI v5.0; Type: QDOVA002AA; Serial: 1251
Measurement SW: DASY52, Version 52.10 (0); SEMCAD X Version 14.6.10 (7417)

Procedure Notes:

1900 MHz Head/Verification/Area Scan (5x7x1): Measurement grid: dx=15mm, dy=15mm
Maximum value of SAR (measured) = 5.68 W/kg

1900 MHz Head/Verification/Zoom Scan (5x5x7)/Cube 0: Measurement grid: dx=8mm, dy=8mm, dz=5mm
Reference Value = 34.662 V/m; Power Drift = -0.02 dB
Peak SAR (extrapolated) = 7.18 W/kg
 $P_{in} = 100$ mW
SAR(1 g) = 4.12 W/kg; SAR(10 g) = 2.14 W/kg
Maximum value of SAR (measured) = 5.77 W/kg



RF Exposure Lab

Plot 5

DUT: Dipole 2550 MHz D2550V2; Type: D2550V2; Serial: D2550V2 - SN:1003

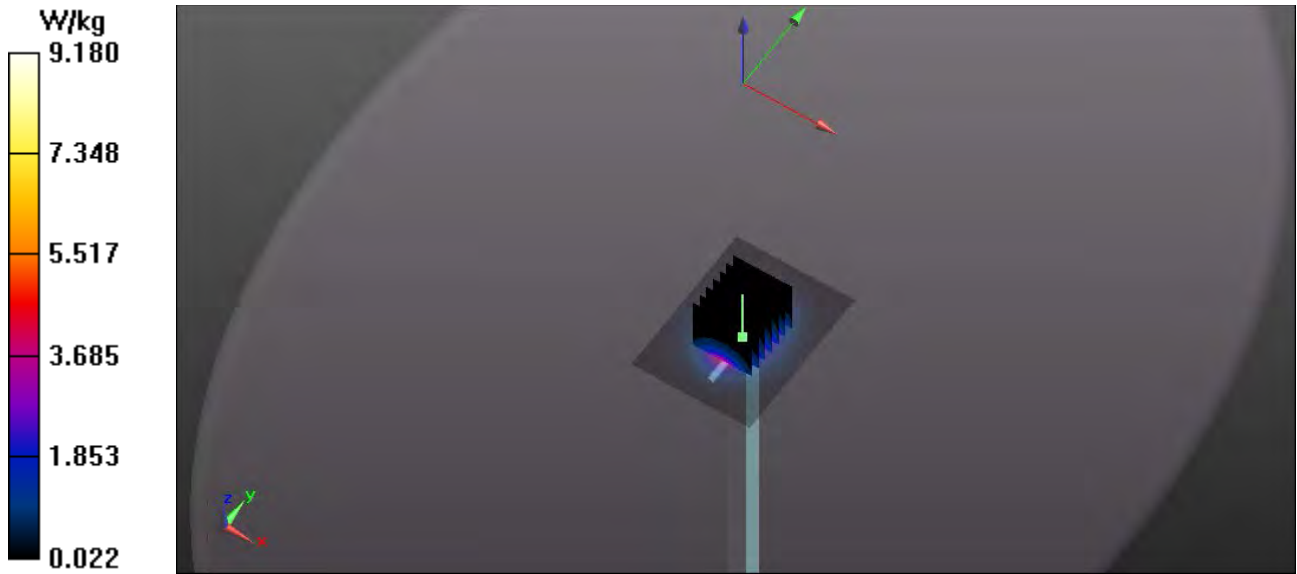
Communication System: CW; Frequency: 2550 MHz; Duty Cycle: 1:1
Medium: HSL2550; Medium parameters used: $f = 2550$ MHz; $\sigma = 1.92$ S/m; $\epsilon_r = 38.74$; $\rho = 1000$ kg/m³
Phantom section: Flat Section

Test Date: Date: 6/19/2023; Ambient Temp: 23 °C; Tissue Temp: 21 °C
Probe: EX3DV4 – SN3693; ConvF(7.71, 7.71, 7.71); Calibrated: 8/28/2022;
Sensor-Surface: 2mm (Mechanical Surface Detection)
Electronics: DAE4 Sn759; Calibrated: 8/16/2023
Phantom: ELI v5.0; Type: QDOVA002AA; Serial: 1251
Measurement SW: DASY52, Version 52.10 (0); SEMCAD X Version 14.6.10 (7417)

Procedure Notes:

2550 MHz Head/Verification/Area Scan (61x81x1): Interpolated grid: dx=1.000 mm, dy=1.000 mm
Maximum value of SAR (interpolated) = 9.05 W/kg

2550 MHz Head/Verification/Zoom Scan (7x7x7)/Cube 0: Measurement grid: dx=5mm, dy=5mm, dz=5mm
Reference Value = 55.923 V/m; Power Drift = -0.03 dB
Peak SAR (extrapolated) = 11.8 W/kg
 $P_{in} = 100$ mW
SAR(1 g) = 5.66 W/kg; SAR(10 g) = 2.49 W/kg
Maximum value of SAR (measured) = 9.18 W/kg



RF Exposure Lab

Plot 6

DUT: Dipole D3300V2; Type: D3300V2; Serial: D3300V2 - SN: 1032

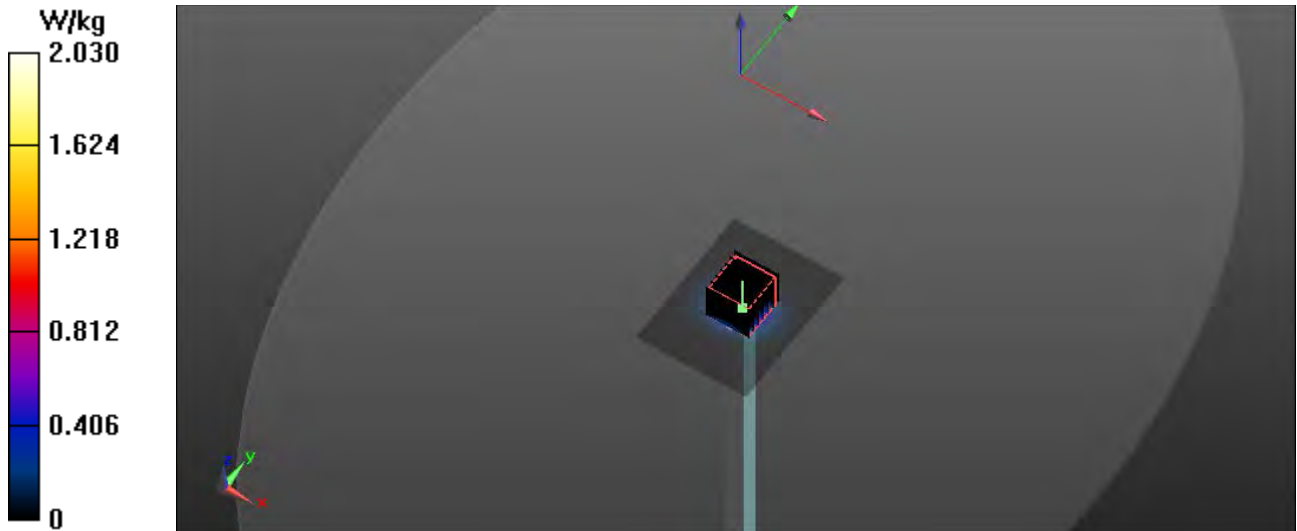
Communication System: CW; Frequency: 3300 MHz; Duty Cycle: 1:1
Medium: HSL 3-6 GHz; Medium parameters used: $f = 3300$ MHz; $\sigma = 2.73$ S/m; $\epsilon_r = 37.59$; $\rho = 1000$ kg/m³
Phantom section: Flat Section

Test Date: Date: 6/20/2023; Ambient Temp: 23 °C; Tissue Temp: 21 °C
Probe: EX3DV4 – SN3693; ConvF(7.02, 7.02, 7.02); Calibrated: 8/28/2022;
Sensor-Surface: 2mm (Mechanical Surface Detection)
Electronics: DAE4 Sn759; Calibrated: 8/16/2023
Phantom: ELI v5.0; Type: QDOVA002AA; Serial: 1251
Measurement SW: DASY52, Version 52.10 (0); SEMCAD X Version 14.6.10 (7417)

Procedure Notes:

3300 MHz Head/Verification/Area Scan (61x81x1): Interpolated grid: dx=1.000 mm, dy=1.000 mm
Maximum value of SAR (interpolated) = 1.81 W/kg

3300 MHz Head/Verification/Zoom Scan (7x7x12)/Cube 0: Measurement grid: dx=4mm, dy=4mm, dz=2mm
Reference Value = 14.856 V/m; Power Drift = -0.01 dB
Peak SAR (extrapolated) = 3.68 W/kg
Pin=10 mW
SAR(1 g) = 0.659 W/kg; SAR(10 g) = 0.253 W/kg
Maximum value of SAR (measured) = 2.03 W/kg



RF Exposure Lab

Plot 7

DUT: Dipole D3500V2; Type: D3500V2; Serial: D3500V2 - SN: 1061

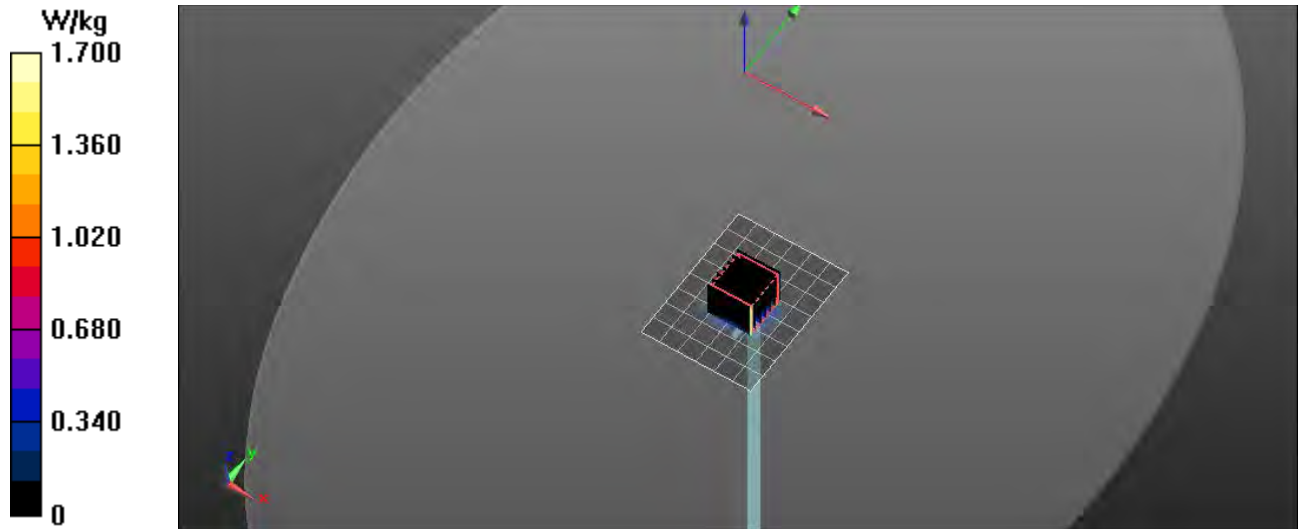
Communication System: CW; Frequency: 3500 MHz; Duty Cycle: 1:1
Medium: HSL 3-6 GHz; Medium parameters used: $f = 3500$ MHz; $\sigma = 2.94$ S/m; $\epsilon_r = 37.36$; $\rho = 1000$ kg/m³
Phantom section: Flat Section

Test Date: Date: 6/20/2023; Ambient Temp: 23 °C; Tissue Temp: 21 °C
Probe: EX3DV4 – SN3693; ConvF(6.98, 6.98, 6.98); Calibrated: 8/28/2022;
Sensor-Surface: 2mm (Mechanical Surface Detection)
Electronics: DAE4 Sn759; Calibrated: 8/16/2023
Phantom: ELI v5.0; Type: QDOVA002AA; Serial: 1251
Measurement SW: DASY52, Version 52.10 (0); SEMCAD X Version 14.6.10 (7417)

Procedure Notes:

3500 MHz Head/Verification/Area Scan (7x9x1): Measurement grid: dx=10mm, dy=10mm
Maximum value of SAR (measured) = 1.65 W/kg

3500 MHz Head/Verification/Zoom Scan (7x7x7)/Cube 0: Measurement grid: dx=4mm, dy=4mm, dz=4mm
Reference Value = 21.367 V/m; Power Drift = -0.02 dB
Peak SAR (extrapolated) = 3.71 W/kg
 $P_{in} = 10$ mW
SAR(1 g) = 0.682 W/kg; SAR(10 g) = 0.254 W/kg
Maximum value of SAR (measured) = 1.7 W/kg



RF Exposure Lab

Plot 8

DUT: Dipole D3700V2; Type: D3700V2; Serial: D3700V2 - SN:1024

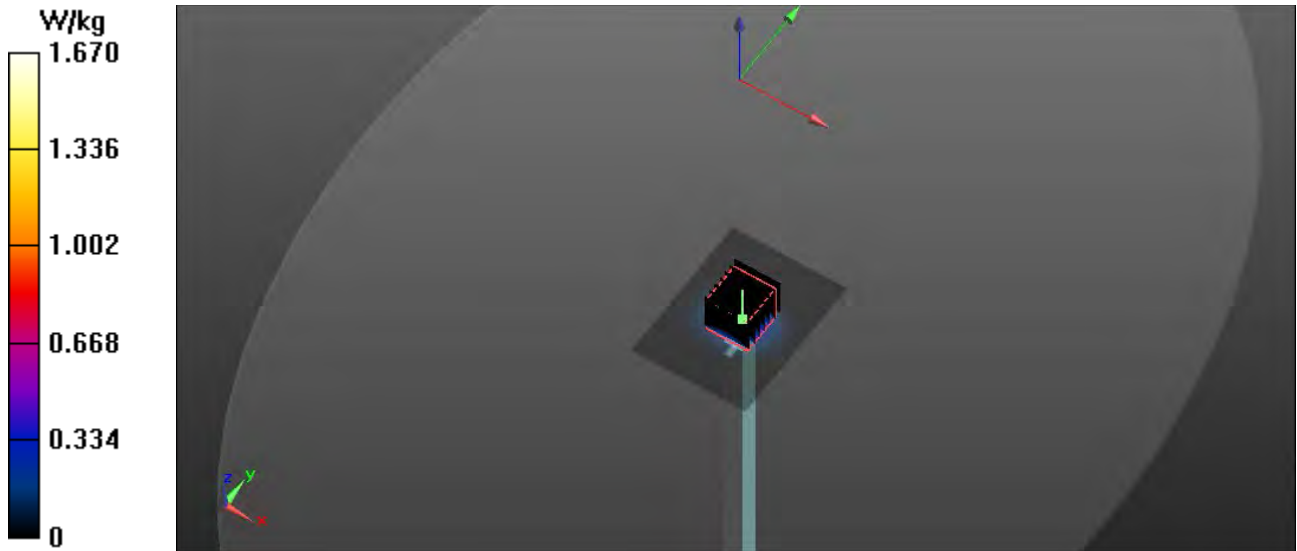
Communication System: CW; Frequency: 3700 MHz; Duty Cycle: 1:1
Medium: HSL 3-6 GHz; Medium parameters used: $f = 3700$ MHz; $\sigma = 3.15$ S/m; $\epsilon_r = 37.13$; $\rho = 1000$ kg/m³
Phantom section: Flat Section

Test Date: Date: 6/20/2023; Ambient Temp: 23 °C; Tissue Temp: 21 °C
Probe: EX3DV4 – SN3693; ConvF(6.95, 6.95, 6.95); Calibrated: 8/28/2022;
Sensor-Surface: 2mm (Mechanical Surface Detection)
Electronics: DAE4 Sn759; Calibrated: 8/16/2023
Phantom: ELI v5.0; Type: QDOVA002AA; Serial: 1251
Measurement SW: DASY52, Version 52.10 (0); SEMCAD X Version 14.6.10 (7417)

Procedure Notes:

3700 MHz Head/Verification/Area Scan (61x81x1): Interpolated grid: dx=1.000 mm, dy=1.000 mm
Maximum value of SAR (interpolated) = 1.65 W/kg

3700 MHz Head/Verification/Zoom Scan (7x7x12)/Cube 0: Measurement grid: dx=4mm, dy=4mm, dz=2mm
Reference Value = 21.467 V/m; Power Drift = -0.01 dB
Peak SAR (extrapolated) = 3.47 W/kg
 $P_{in} = 10$ mW
SAR(1 g) = 0.698 W/kg; SAR(10 g) = 0.251 W/kg
Maximum value of SAR (measured) = 1.67 W/kg



RF Exposure Lab

Plot 9

DUT: Dipole D3900V2; Type: D3900V2; Serial: D3900V2 - SN:1082

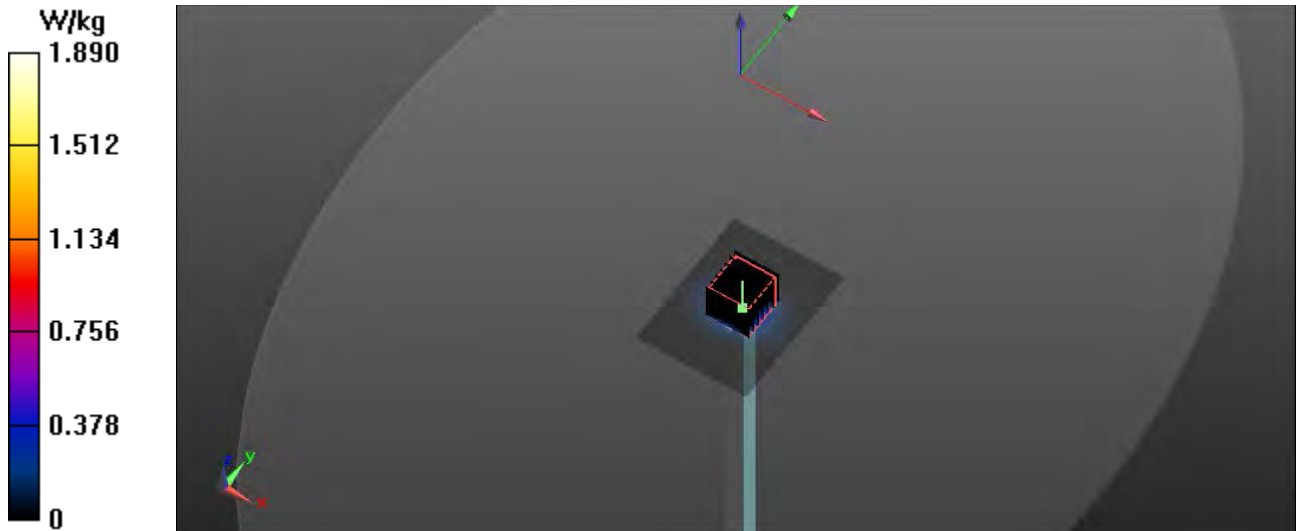
Communication System: CW; Frequency: 3900 MHz; Duty Cycle: 1:1
Medium: HSL 3-6 GHz; Medium parameters used: $f = 3900$ MHz; $\sigma = 3.37$ S/m; $\epsilon_r = 36.9$; $\rho = 1000$ kg/m³
Phantom section: Flat Section

Test Date: Date: 6/21/2023; Ambient Temp: 23 °C; Tissue Temp: 21 °C
Probe: EX3DV4 – SN3693; ConvF(6.4, 6.4, 6.4); Calibrated: 8/28/2022;
Sensor-Surface: 2mm (Mechanical Surface Detection)
Electronics: DAE4 Sn759; Calibrated: 8/16/2023
Phantom: ELI v5.0; Type: QDOVA002AA; Serial: 1251
Measurement SW: DASY52, Version 52.10 (0); SEMCAD X Version 14.6.10 (7417)

Procedure Notes:

3900 MHz Head/Verification/Area Scan (61x81x1): Interpolated grid: dx=1.000 mm, dy=1.000 mm
Maximum value of SAR (interpolated) = 1.47 W/kg

3900 MHz Head/Verification/Zoom Scan (7x7x12)/Cube 0: Measurement grid: dx=4mm, dy=4mm, dz=2mm
Reference Value = 15.385 V/m; Power Drift = -0.04 dB
Peak SAR (extrapolated) = 3.34 W/kg
Pin=10 mW
SAR(1 g) = 0.709 W/kg; SAR(10 g) = 0.248 W/kg
Maximum value of SAR (measured) = 1.89 W/kg



RF Exposure Lab

Plot 10

DUT: Dipole D4200V2; Type: D4200V2; Serial: D4200V2 - SN:1025

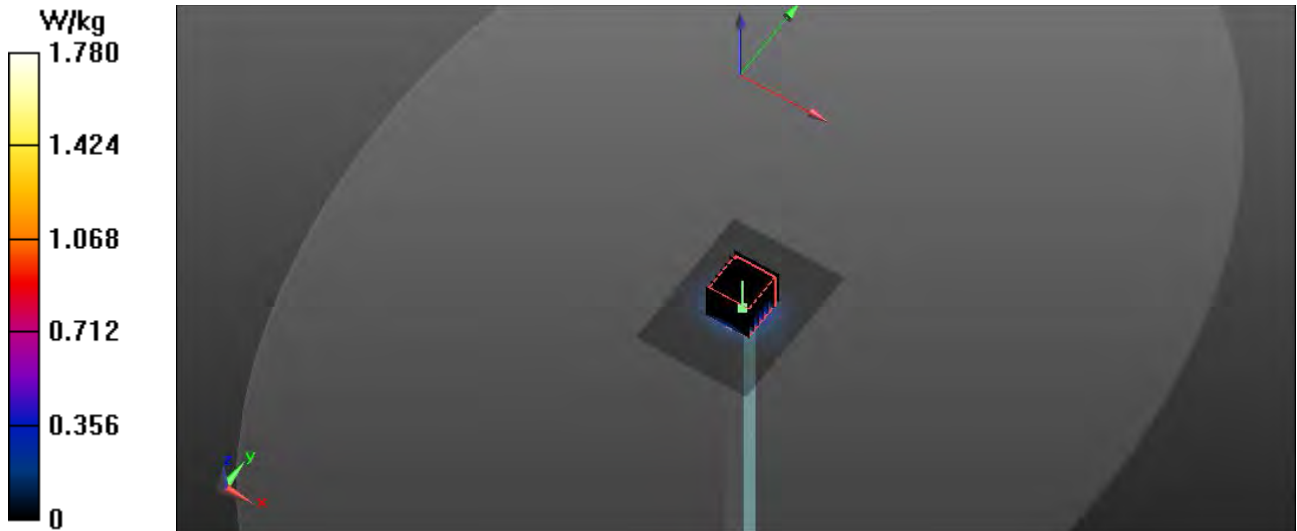
Communication System: CW; Frequency: 4200 MHz; Duty Cycle: 1:1
Medium: HSL 3-6 GHz; Medium parameters used: $f = 4200$ MHz; $\sigma = 3.68$ S/m; $\epsilon_r = 36.55$; $\rho = 1000$ kg/m³
Phantom section: Flat Section

Test Date: Date: 6/21/2023; Ambient Temp: 23 °C; Tissue Temp: 21 °C
Probe: EX3DV4 – SN3693; ConvF(6.18, 6.18, 6.18); Calibrated: 8/28/2022;
Sensor-Surface: 2mm (Mechanical Surface Detection)
Electronics: DAE4 Sn759; Calibrated: 8/16/2023
Phantom: ELI v5.0; Type: QDOVA002AA; Serial: 1251
Measurement SW: DASY52, Version 52.10 (0); SEMCAD X Version 14.6.10 (7417)

Procedure Notes:

4200 MHz Head/Verification/Area Scan (61x81x1): Interpolated grid: dx=1.000 mm, dy=1.000 mm
Maximum value of SAR (interpolated) = 1.72 W/kg

4200 MHz Head/Verification/Zoom Scan (7x7x12)/Cube 0: Measurement grid: dx=4mm, dy=4mm, dz=2mm
Reference Value = 17.167 V/m; Power Drift = -0.01 dB
Peak SAR (extrapolated) = 2.46 W/kg
Pin=10 mW
SAR(1 g) = 0.674 W/kg; SAR(10 g) = 0.228 W/kg
Maximum value of SAR (measured) = 1.77 W/kg



Appendix B – SAR Test Data Plots

RF Exposure Lab

Plot 1

DUT: PRO360-5G; Type: Wireless TV Video Case; Serial: AVWPRO31222008399

Communication System: LTE (SC-FDMA, 1 RB, 20 MHz, QPSK); Frequency: 836.5 MHz; Duty Cycle: 1:1
Medium: HSL835; Medium parameters used (interpolated): $f = 836.5$ MHz; $\sigma = 0.947$ S/m; $\epsilon_r = 41.061$; $\rho = 1000$ kg/m³
Phantom section: Flat Section

Test Date: Date: 6/13/2023; Ambient Temp: 23 °C; Tissue Temp: 21 °C

Probe: EX3DV4 - SN3693; ConvF(9.99, 9.99, 9.99); Calibrated: 8/28/2022
Sensor-Surface: 2mm (Mechanical Surface Detection)
Electronics: DAE4 Sn759; Calibrated: 8/16/2022
Phantom: ELI v5.0; Type: QDOVA002AA; Serial: 1251
Measurement SW: DASY52, Version 52.10 (0); SEMCAD X Version 14.6.10 (7417)

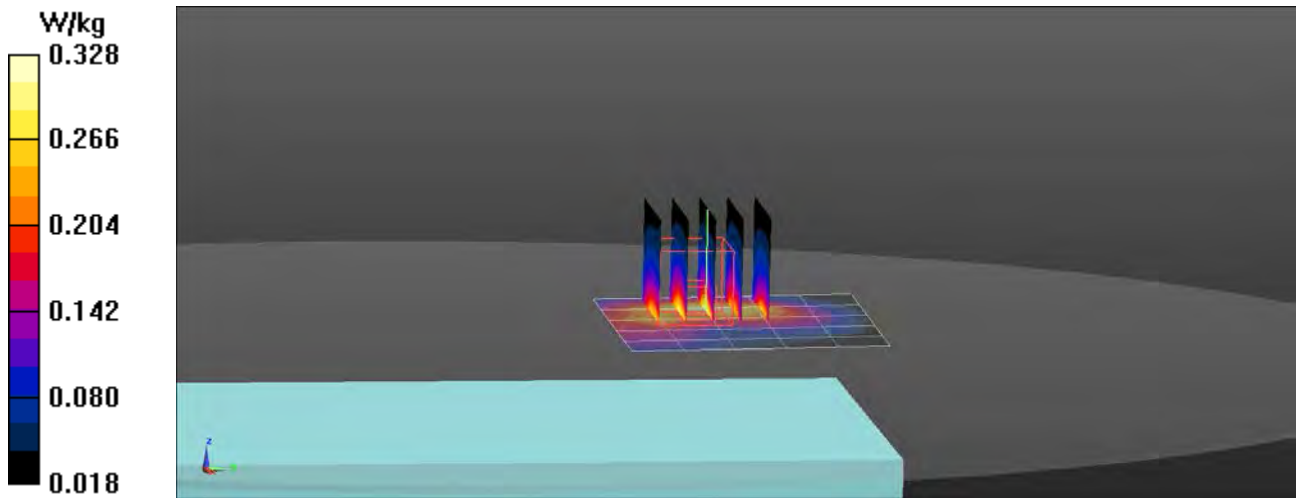
Procedure Notes:

n5 LTE/Ant M1 Mid 1 RB 49 Offset/Area Scan (6x6x1): Measurement grid: dx=15mm, dy=15mm

[Info: Interpolated medium parameters used for SAR evaluation.](#)
Maximum value of SAR (measured) = 0.335 W/kg

n5 LTE/Ant M1 Mid 1 RB 49 Offset/Zoom Scan (5x5x7)/Cube 0: Measurement grid: dx=8mm, dy=8mm, dz=5mm
Reference Value = 4.829 V/m; Power Drift = 0.03 dB
Peak SAR (extrapolated) = 0.397 W/kg
SAR(1 g) = 0.247 W/kg; SAR(10 g) = 0.152 W/kg

[Info: Interpolated medium parameters used for SAR evaluation.](#)
Maximum value of SAR (measured) = 0.328 W/kg



RF Exposure Lab

Plot 2

DUT: PRO360-5G; Type: Wireless TV Video Case; Serial: AVWPRO31222008399

Communication System: LTE (SC-FDMA, 1 RB, 20 MHz, QPSK); Frequency: 2535 MHz; Duty Cycle: 1:1
Medium: HSL2550; Medium parameters used (interpolated): $f = 2535$ MHz; $\sigma = 1.895$ S/m; $\epsilon_r = 38.775$; $\rho = 1000$ kg/m³
Phantom section: Flat Section

Test Date: Date: 6/19/2023; Ambient Temp: 23 °C; Tissue Temp: 21 °C

Probe: EX3DV4 - SN3693; ConvF(7.71, 7.71, 7.71); Calibrated: 8/28/2022
Sensor-Surface: 2mm (Mechanical Surface Detection)
Electronics: DAE4 Sn759; Calibrated: 8/16/2022
Phantom: ELI v5.0; Type: QDOVA002AA; Serial: 1251
Measurement SW: DASY52, Version 52.10 (0); SEMCAD X Version 14.6.10 (7417)

Procedure Notes:

n7 LTE/Ant M1 Mid 1 RB 49 Offset/Area Scan (7x7x1): Measurement grid: dx=10mm, dy=10mm

[Info: Interpolated medium parameters used for SAR evaluation.](#)

Maximum value of SAR (measured) = 0.598 W/kg

n7 LTE/Ant M1 Mid 1 RB 49 Offset/Zoom Scan (7x7x7)/Cube 0: Measurement grid: dx=5mm, dy=5mm, dz=5mm

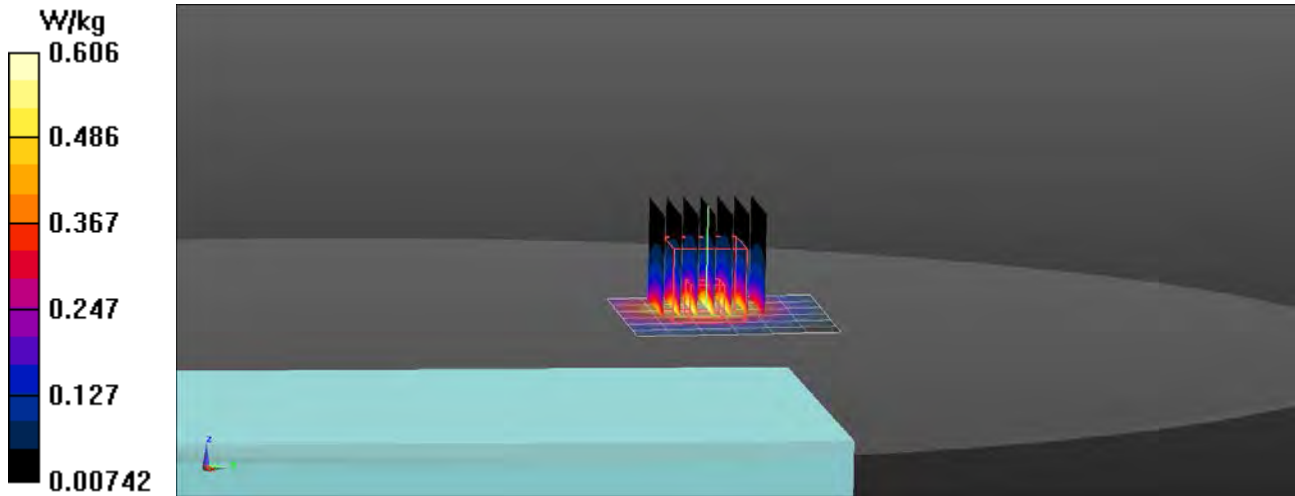
Reference Value = 3.187 V/m; Power Drift = 0.05 dB

Peak SAR (extrapolated) = 0.776 W/kg

SAR(1 g) = 0.441 W/kg; SAR(10 g) = 0.251 W/kg

[Info: Interpolated medium parameters used for SAR evaluation.](#)

Maximum value of SAR (measured) = 0.606 W/kg



RF Exposure Lab

Plot 3

DUT: PRO360-5G; Type: Wireless TV Video Case; Serial: AVWPRO31222008399

Communication System: LTE (SC-FDMA, 1 RB, 15 MHz, QPSK); Frequency: 707.5 MHz; Duty Cycle: 1:1
Medium: HSL750; Medium parameters used (interpolated): $f = 707.5$ MHz; $\sigma = 0.898$ S/m; $\epsilon_r = 41.218$; $\rho = 1000$ kg/m³
Phantom section: Flat Section

Test Date: Date: 6/12/2023; Ambient Temp: 23 °C; Tissue Temp: 21 °C

Probe: EX3DV4 - SN3693; ConvF(10.46, 10.46, 10.46); Calibrated: 8/28/2022
Sensor-Surface: 2mm (Mechanical Surface Detection)
Electronics: DAE4 Sn759; Calibrated: 8/16/2022
Phantom: ELI v5.0; Type: QDOVA002AA; Serial: 1251
Measurement SW: DASY52, Version 52.10 (0); SEMCAD X Version 14.6.10 (7417)

Procedure Notes:

n12 LTE/Ant M1 Mid 1 RB 37 Offset/Area Scan (6x6x1): Measurement grid: dx=15mm, dy=15mm

[Info: Interpolated medium parameters used for SAR evaluation.](#)
Maximum value of SAR (measured) = 0.357 W/kg

n12 LTE/Ant M1 Mid 1 RB 37 Offset/Zoom Scan (7x7x7)/Cube 0: Measurement grid: dx=8mm, dy=8mm, dz=5mm
Reference Value = 8.118 V/m; Power Drift = 0.05 dB
Peak SAR (extrapolated) = 0.467 W/kg
SAR(1 g) = 0.310 W/kg; SAR(10 g) = 0.209 W/kg

[Info: Interpolated medium parameters used for SAR evaluation.](#)
Maximum value of SAR (measured) = 0.387 W/kg

