

BT PTT
 BLE IN-GLOVE PTT / WIRELESS POC PTT

AVAILABLE IN 2 CONFIGURATIONS: BUTTON+FINGER PTT AND BUTTON PTT
 MODEL NUMBER: IAIG-PTT / IABTB-PTT

Congratulations on purchasing the IASUS Concepts Bluetooth PTT!

This wireless Bluetooth Low Energy PTT gives you the convenience and flexibility to initiate audio transmissions in ESChat and Zello on iPhone and Android operating systems without having to reach for your headset or smartphone.

You must register your product to be eligible for warranty service.* To register online, please visit the IASUS Concepts website at:

*To receive warranty service, you will need to provide a copy of your dated sales receipt to confirm warranty status. Please retain the original copy for your records.

ABOUT THE IASUS WIRELESS PTT

The BLE In-Glove PTT and Wireless POC PTT only work in ESChat and Zello for initiating audio transmissions and will not work for any other functions (ie. Music playback, answer/end calls, etc). They will keep working as long as an active ESChat or Zello chat session is running in your smartphone's background.



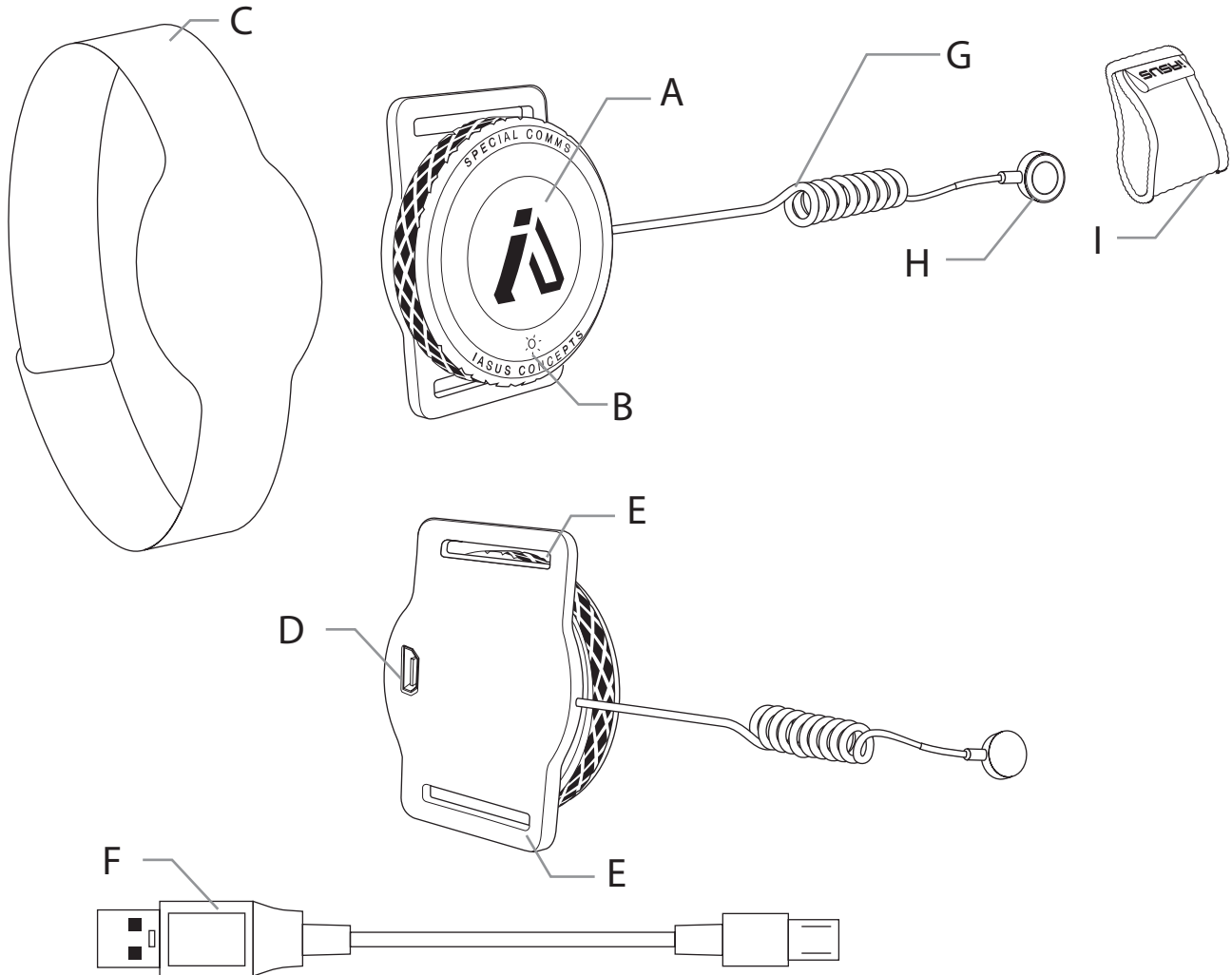
WARNINGS

Any changes or modifications to this product not expressly approved by IASUS Concepts Ltd. could void the 1-year limited warranty. Should there be any questions or concerns about modifications, please contact IASUS.

TABLE OF CONTENTS

| | |
|---|----|
| PARTS & CONTROLS REFERENCE..... | 4 |
| CHARGING | 5 |
| LED INDICATOR | 5 |
| USING THE PTT BUTTON..... | 6 |
| USING THE FINGER PTT | 7 |
| CONNECTING THE PTT TO YOUR SMARTPHONE | 8 |
| USING THE PTT WITH ONE APP ONLY | 9 |
| USING THE PTT WITH BOTH APPS..... | 9 |
| FAQ | 10 |
| FCC COMPLIANCE STATEMENT | 11 |
| 1-YEAR LIMITED WARRANTY | 12 |

PARTS & CONTROLS REFERENCE



A..... PTT Button

B..... LED indicator

C..... Velcro Strap

D..... Micro USB Charging Port

E..... Strap Loops

F..... Charging Cable

.....
Only available for BLE In-Glove PTT:

G..... Coiled Cable

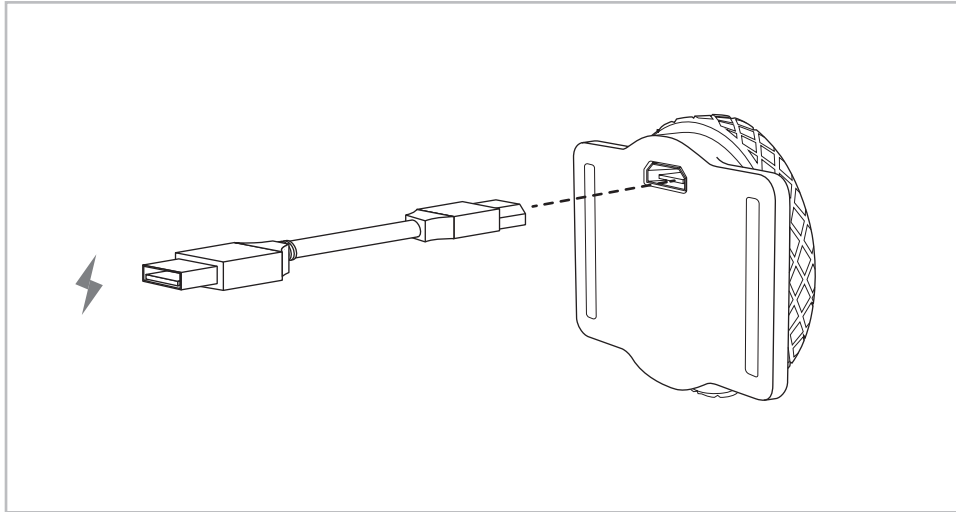
H..... Finger PTT

I..... Finger Sleeve

CHARGING

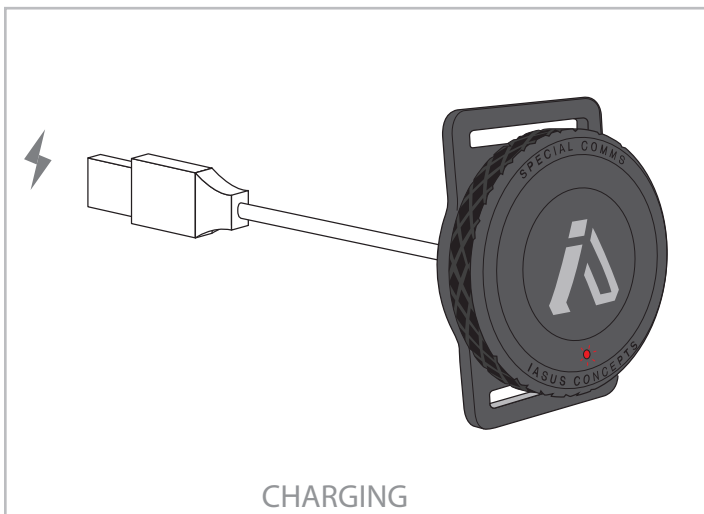
The PTT component has a built-in non-removable lithium-ion battery. It can be charged using the micro-USB port on the backside by connecting the included charging cable to a computer's USB port or a phone's USB power source.* The PTT can be fully charged in 70 minutes. As the module uses very little power, a single charge enables long term use before charging is needed.

**To prevent damage and shortening the life of the battery, we recommend a USB power source that does not exceed 1.0A.*

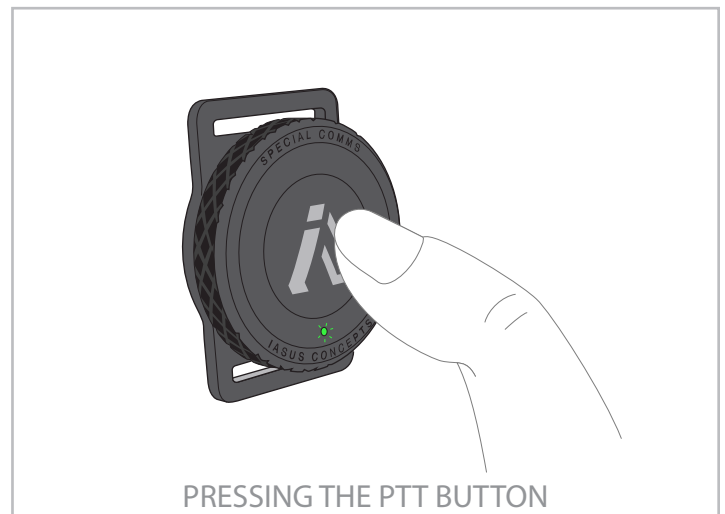


LED INDICATOR

The PTT Button (A) has a LED indicator (B) embedded inside which lights up for indicating the following:



Red LED = Charging

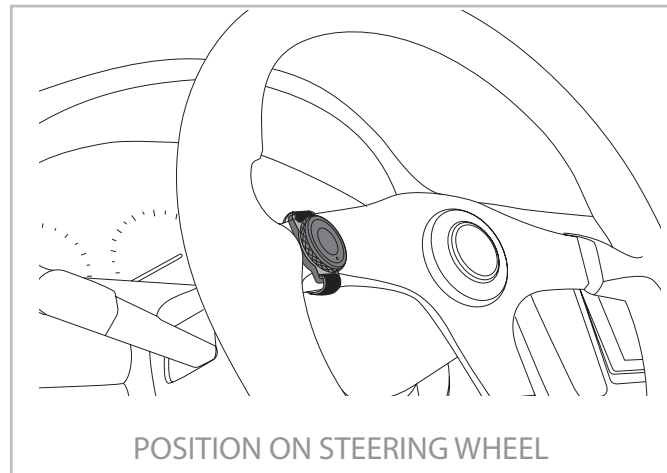


Green LED = Confirm PTT Button Press

USING THE PTT BUTTON



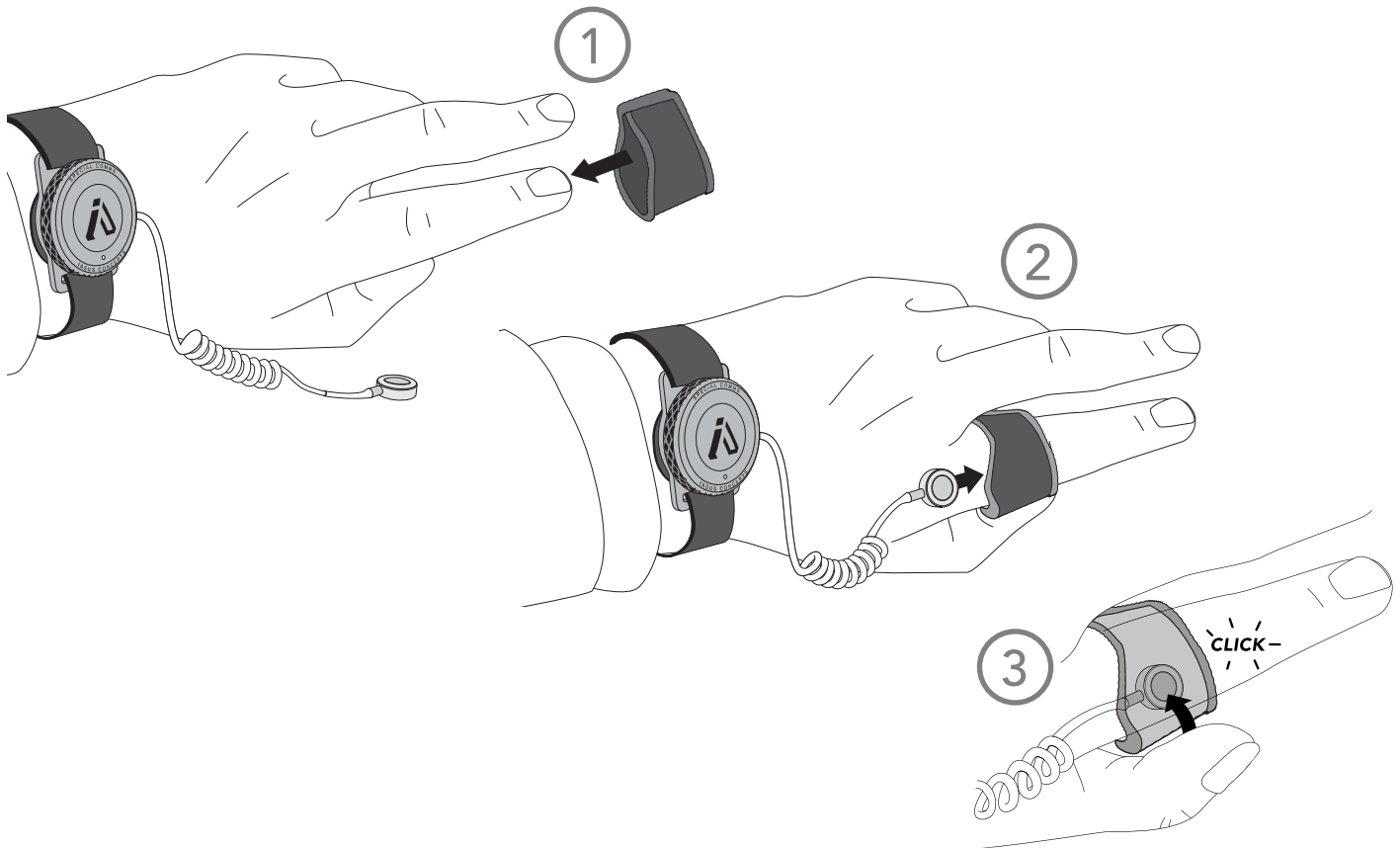
The BLE In-Glove PTT/Bluetooth POC PTT comes with a velcro strap for wrapping around your wrist.



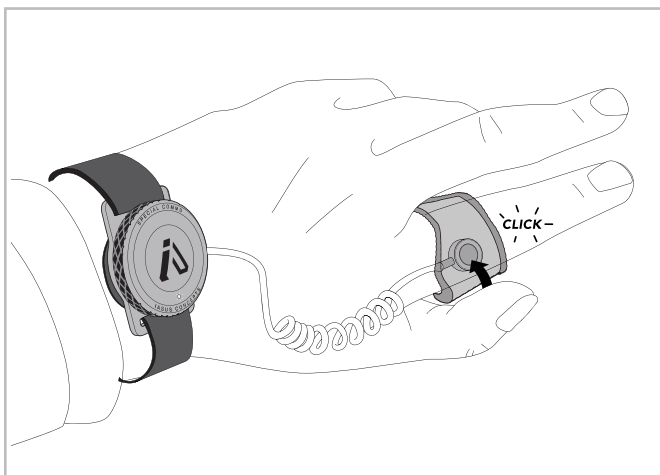
It can also be used to wrap around an object such as a motorcycle handlebar or steering wheel. The strap ends can be cut for a custom fit to the selected mounting location.

USING THE FINGER PTT AVAILABLE ONLY WITH BLE IN-GLOVE PTT

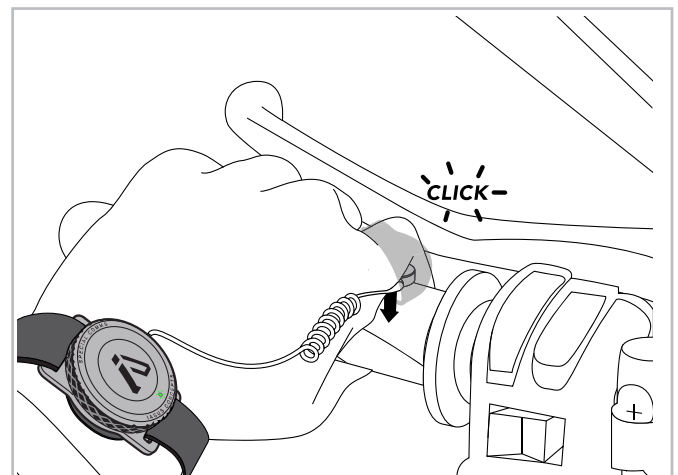
The wired Finger PTT Button allows for a small button to be placed and activated by your finger tips, making it ideal for applications requiring the use of both hands or when a glove is used. To wear the Finger PTT Button, slip the included Neoprene sleeve onto your finger and slide the Finger PTT in between to be held in place.



These are a couple of examples of ways to wear and activate the Finger PTT:



1. On the side of your index finger, activated by your thumb.




2. On the underside of a finger, activated by pressing it against a surface such as the grip of a motorcycle handlebar.

CONNECTING THE PTT TO YOUR SMARTPHONE

The IASUS Bluetooth PTT accessories are designed specifically for use with ESChat and Zello apps.





To connect the Bluetooth PTT to each app, perform the following:

CONNECT WITH ESChat[®] Enterprise Secure Chat

1. Ensure Bluetooth is turned on in your phone settings 
2. In ESChat, click on **••• MORE**
3. Select **Settings**
4. Select **PTT Button**
5. Under **CONNECTION TYPE**, select **Bluetooth LE**
6. Under **BLUETOOTH DEVICES**, select **IASUS IG-PTT**
7. The BT PTT setup is complete and ready to be used in ESChat

NOTE: For more information on using the IASUS Bluetooth PTT with ESChat, please refer to the ESChat documentation.

CONNECT WITH Zello

1. Ensure Bluetooth is turned on in your phone settings 
2. In Zello, select  to bring up menu
3. Select  Options
4. Select  Push-to-talk buttons
5. Select **Add New Device**
6. When instructed, press the IASUS PTT button once
 - > IASUS IG-PTT will appear under **OTHER BUTTONS**
7. Select **IASUS IG-PTT**
 - > The device will be added under **MY BUTTONS**
8. The BT PTT setup is complete and ready to be used in Zello

NOTE: The IASUS Bluetooth PTT can be customized for PTT Activation Method (Hold to Talk or Toggle), and Button Mapping (map to a Contact or Channel). For more information on using the IASUS Bluetooth PTT with Zello, please refer to the Zello documentation.

USING THE PTT WITH ONE APP ONLY *ESCHAT OR ZELLO*

After connecting the PTT to either ESChat or Zello, pressing the PTT Button (A) or Finger PTT (H) will transmit in the last chat opened in the app. When the app being used is running in the background, the IASUS Bluetooth PTT will still activate the last chat opened, or a button mapping to a contact or a channel if one was set.

USING THE PTT WITH BOTH APPS *ESCHAT AND ZELLO*

When using a IASUS Bluetooth PTT with both ESChat and Zello opened at the same time (i.e running in the background), the app that was last used will take priority when the PTT button (A) or Finger PTT (H) is pressed.

Example:

ESChat is running in the background while Zello is being used in the foreground.

Once the phone is back on the home screen without closing Zello, pressing the IASUS BT PTT will activate the last opened chat in Zello.

Once ESChat is brought back to the foreground and a Push-To-Talk has been initiated using the screen, the IASUS Bluetooth PTT will now activate ESChat, even when it is running in the background. Without initiating a Push-To-Talk with the screen, pressing the IASUS Bluetooth PTT will still transmit by default in Zello.

To switch back to Zello, bring Zello into the foreground and activate the IASUS Bluetooth PTT.

FAQ

| PROBLEM | SOLUTIONS |
|--|--|
| PTT Button doesn't light up green | <ul style="list-style-type: none">• Make sure that the Bluetooth PTT is fully charged. Try charging the BT PTT using a computer USB port or a phone's USB power source that does not exceed 1.0A. |
| Cannot pair to app | <ul style="list-style-type: none">• Make sure that the Bluetooth PTT is not still paired to the app on another phone. The PTT can only be paired to one device at a time. Disconnect the BT PTT from the phone it was previously paired to through the Zello or ESChat pairing menu. (Refer to Pairing Instructions on page 8) |

If a problem persists, please contact IASUS Concepts at info@iasus-concepts.com

FCC COMPLIANCE STATEMENT

This device complies with part 15 of the FCC Rules.

Operation is subject to the following two conditions:

- (1) This device may not cause harmful interference, and
- (2) this device must accept any interference received, including interference that may cause undesired operation.

Note: This equipment has been tested and found to comply with the limits for a Class B digital device, pursuant to Part 15 of the FCC Rules. These limits are designed to provide reasonable protection against harmful interference in a residential installation. This equipment generates, uses and can radiate radio frequency energy and, if not installed and used in accordance with the instructions, may cause harmful interference to radio communications.

However, there is no guarantee that interference will not occur in a particular installation. If this equipment does cause harmful interference to radio or television reception, which can be determined by turning the equipment off and on, the user is encouraged to try to correct the interference by one or more of the following measures:

- Reorient or relocate the receiving antenna.
- Increase the separation between the equipment and receiver.
- Connect the equipment into an outlet on a circuit different from that to which the receiver is connected.
- Consult the dealer or an experienced radio/TV technician for help.

Warning: Changes or modifications to this unit not expressly approved by the part responsible for compliance could void the user's authority to operate the equipment.

FCC Radiation Exposure Statement

The device has been evaluated to meet general RF exposure requirement.
The device can be used in portable exposure condition without restriction.

1-YEAR LIMITED WARRANTY

IASUS Concepts Limited warrants that the IASUS BLE IN-GLOVE PTT and IASUS WIRELESS POC PTT sold by IASUS Concepts or its authorized agents is free from defects in materials and workmanship under normal use for one year. This warranty is only applicable to the original purchaser in possession of a dated sales document receipt that includes the name and the company from which it was purchased. This warranty is in lieu of and excludes all other warranties, expressed or implied, including any implied warranty of merchantability or fitness, and of any other obligation on the part of IASUS Concepts Limited.

WHAT THIS WARRANTY DOES NOT COVER

- Damage from improper operation, misuse, neglect such as dropping the product onto hard surfaces, contact with extreme humidity or heat, or acts of nature (lightning, floods, power surges, etc.).
- Products that may have been tested, adjusted, installed, maintained, repaired or altered in any way by persons not expressly approved by IASUS Concepts Limited.
- Cords that are stretched, burnt, torn or cut.
- Products purchased more than 12 months previous to the current date.
- Products that are not accompanied by a valid proof of purchase.

TO REGISTER FOR YOUR WARRANTY

You must register your product to receive warranty service. To do so and to view detailed information about our warranty service, please visit :

<https://iasus-concepts.com/warranty/>

TO GET WARRANTY SERVICE FROM IASUS CONCEPTS

Please contact our customer service department via our website. Once you have done so, you will receive instructions on how to ship the products to IASUS Concepts or to one of our designated service centers. If instructed to ship the product, you must ship it with freight, duties and insurance prepaid. Regardless of where you are instructed to ship your product, you must include:

- A copy of your dated sales document receipt
- A fully completed Return Materials Authorization (RMA) form.
- Payment for any services or repairs not covered by the warranty. This will have been predetermined with your customer service representative.

LEGAL INFORMATION

There is no informal dispute settlement mechanism available. This warranty gives you specific legal rights, and you may also have other rights, which vary geographically. Some areas do not allow limitations on how long an implied warranty last and/or do not allow the exclusions or limitations or consequential damages. IF this is true for your area, the above limitations or exclusions may not apply to you. IASUS Concepts shall not be liable for any special or consequential damages or for loss or expense directly or indirectly arising from use of the product, inability to use the product in combination with other equipment, or from any other cause. IASUS Concepts reserves the right to make changes in the design of the product and to make additions or improvements to it without incurring any obligation to modify any products previously sold.

FOR LATEST NEWS AND PRODUCTS,
FOLLOW US ON SOCIAL MEDIA

 /iasus.concepts

 /zerobackgroundnoise