



EXPLORE SMART COLLAR



QUICK START GUIDE

# SET IT UP AND LET THEM GO.

## 1. POWER UP AND CONNECT THE COLLAR

Make sure your phone's bluetooth is on and that the collar has been charged. Turn your Wagz Explore Smart Collar on by holding down the power button for 5 seconds. The lights will begin flashing blue when it is ready to pair to your phone.

## 2. DOWNLOAD THE WAGZ™ APP

Search for the Wagz™ app in the App Store (iOS users) or Google Play (Android Users). You will be prompted to download the free app.



## 3. SIGN IN AND REGISTER YOUR DEVICE

New to the Wagz™ family of connected products? Select "Create New Account" or sign in with your favorite social site. Follow the in-app instructions to register your Wagz™ Explore Smart Collar. Once connected, your Wagz Explore Smart Collar will receive any updates to enhance your connected lifestyle. This update can take up to 10 minutes and your collar will flash green while updating.

## 4. ATTACH YOUR EXPLORE SMART COLLAR TO YOUR DOG'S COLLAR

Your Explore Smart Collar is designed to fit any 1" wide dog collar. The quick release clips make it easy to remove your Explore Smart Collar to charge in between uses, while keeping the clips safely attached to your dog's collar.

While your Explore Smart Collar is charging, you can attach the two clips to your dog's collar. Once your Explore Smart Collar is done charging, you will be able to slide the collar into the tracks on the clips until you hear a "click" which indicates that your collar is secure. You are now ready to start using your Explore Smart Collar.

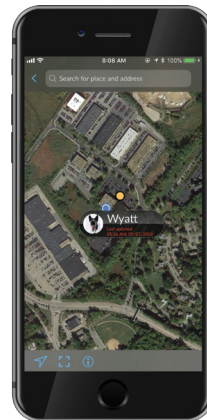
## 5. USING THE EXPLORE SMART COLLAR

Follow the in-app instructions to calibrate the invisible leash, set up virtual fences and to start using all the features of your Explore Smart Collar.

Please note that some of the features including invisible leash and virtual fences will require training. Your dogs' learning style will depend on their individual personality. Make sure to use positive reinforcement and find the reward that motivates them.

If you would like some tips on how to train your pup with our Explore Smart Collar, please visit [support.wagz.com](http://support.wagz.com).

## THE WAGZ APP SERVES AS YOUR DASHBOARD FOR ALL WAGZ PRODUCTS AND ALLOWS YOU TO MANAGE ONE OR MULTIPLE DOGS.



### CREATE VIRTUAL FENCES ON YOUR PHONE

Trace precise boundaries from anywhere on your phone to help keep them contained, and get alerts if they leave a designated safe zone.

### GIVE YOUR PUP A CALL

Check in anytime. With two-way audio, you can stay connected from anywhere and comfort them with your voice.

### NEVER LOSE YOUR PUP

Always know where your pup is located and get alerts if they leave a designated area.

HAVE QUESTIONS? Complete instructions available in the Wagz™ app. Visit [support.wagz.com](http://support.wagz.com) if you encounter problems.

# UNLEASH A COMPLETELY CONNECTED PET LIFESTYLE.

MORE THAN SMART TRACKING. HELP YOUR PUP STAY SAFELY CONTAINED, HAPPY, AND HEALTHY.



## VIRTUAL FENCE

Trace precise boundaries from your phone to help keep them within your set safe zones.



## GPS LOCATION

Always know where your pup is located and get alerts if they leave a designated area.



## ACTIVITY TRACKING

Track your adventures and monitor your pup's daily activity levels.



## INVISIBLE LEASH

Ditch the leash and create a movable fence that signals your dog to stay close.



## LED LIGHTS

Light the way with built-in app-controlled LED lights.



## HUMANE CORRECTION

Keep them in safe zones with gentle ultrasonic and vibration corrections.



## TEMPERATURE ALERTS

Keep them safe with sensors that alert you when conditions are too hot or cold.



## INVISIBLE GATES

Pair with Roam Smart Shields to create customizable zones indoors around the area you want to protect.

(Wagz Roam Smart Shields sold separately)

# WAGZ™ SUBSCRIPTION PLAN

MORE PEACE OF MIND. PLAN ON IT.

Wagz products use data to deliver you the information that keeps your pet healthy and safe. The Explore Smart Collar requires a monthly Wagz Pro Plan because it acts as a smartphone for your dog and uses cellular data to locate and track your pup, talk to your pup, and so much more!

Check out all the benefits of the Wagz Pro Plan.

---

HD Video and Bark Alerts (coming soon)

---

Video Storage and WiFi Streaming

---

Virtual Fence and Alerts

---

GPS Location

---

Activity Tracking

---

Two-Way Audio

---

Extended Warranty (3 Years)

---

Lost Pet Assistance (Shelter Notifications)

---

Live Chat with the Dog Nerds

---

Exclusive Wagz Discounts

---

Visit [wagz.com](http://wagz.com) for more information and to see how to save with multiple payment options to choose from. Once you choose the option best for you, sign up through the Wagz app and start enjoying all the benefits of the Wagz Pro Plan.

# BUILD A CONNECTED PET HOME.

MANY SOLUTIONS. ONE SIMPLE APP.



NUTRITION  
SERVE  
SMART FEEDER



LOCATION & ACTIVITY  
EXPLORE  
SMART COLLAR



HOME ACCESS  
GO  
SMART DOOR



SO MUCH MORE  
CONNECTED  
PET TECH

BUILD YOUR CONNECTED PET LIFESTYLE  
AT [WAGZ.COM](http://WAGZ.COM).

**REGULATORY STATEMENT:**

This equipment has been tested and found to comply with the limits for a Class B digital device, pursuant to Part 15 of the FCC Rules. These limits are designed to provide reasonable protection against harmful interference in a residential installation. This equipment generates, uses and can radiate radio frequency energy and, if not installed and used in accordance with the instructions, may cause harmful interference to radio communications. However, there is no guarantee that interference will not occur in a particular installation. If this equipment does cause harmful interference to radio or television reception, which can be determined by turning the equipment off and on, the user is encouraged to try to correct the interference by one or more of the following measures:

- Reorient or relocate the receiving antenna
- Increase the separation between the equipment and receiver
- Consult the dealer or an experienced radio/TV technician for help

This device complies with Part 15 of the FCC Rules. Operation is subject to the following two conditions: (1) This device may not cause interference, and (2) this device must accept any interference received, including interference that may cause undesired operation of the device.

WAGZ, Inc. is not responsible for any changes or modifications not expressly approved by WAGZ, Inc. Such modifications could void the user's authority to operate the equipment.

This device contains FCC ID: 2AAGMUS130Q

This device complies with FCC radio frequency radiation exposure rules and limits set forth for an uncontrolled environment, when installed and operated with a minimum distance of 20 cm between the antenna and the body of nearby persons and when not simultaneously used with other nearby radio-transmitters.



WANNA CONNECT?  
BARK ATCHA.



[facebook.com/wagzinc](https://facebook.com/wagzinc)



[@wagzinc](https://www.instagram.com/wagzinc)



[@getwagz](https://twitter.com/getwagz)

QUESTIONS OR COMMENTS?  
ASK THE DOG NERDS.

**Phone:** 1-833-GET-WAGZ

**Email:** [support@wagz.com](mailto:support@wagz.com)