

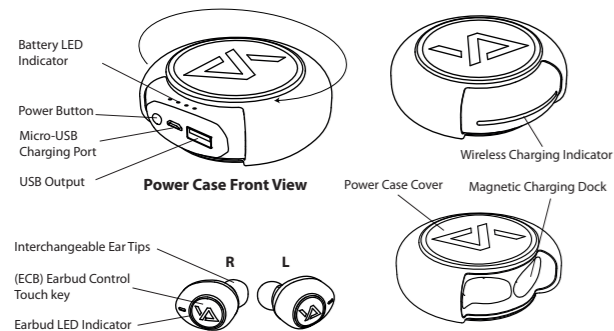


True Wireless Stereo Earbuds with 1,500mAh Power Case

Included In this package

- Interchangeable Ear Tips
- Micro-USB Charging Cable
- User Manual

Overview



Air Twins indication table

1. Wireless Stereo Operation

Step	Status	Control	LED Indication	Voice notification
1-1	Turn on & Start pairing (Auto)	Take out the earbuds from the charging case	The Left earbud will flash in blue/Red fastly, and the right earbud will flash in blue slowly	Connected, left channel, right channel and pairing
	Turn on & Start pairing (Manual)	Long touch the ECB for 4-5 seconds		
1-2	After connected with bluetooth device	--	Flash in blue every 5 seconds	--
	Turn Off (Auto)	Put back the earbuds to the charging case	Both earbuds will be in RED light during charging	--
1-3	Turn Off (Manual)	Long touch the ECB for 5-6 seconds		

1. Mono Earbud Pairing

Step	Status	Control	LED Indication	Voice notification
2-1	Select either right or left earbud	Long touch the ECB for 5 seconds to turn ON manually	- earbud will flash in blue/Red	pairing
		--	Flash in blue every 5 seconds	Connected
2-2	After connected with bluetooth device	--		

1. General Operation

Step	Status	Control	LED Indication	Voice notification
3-1	Accept phone call	Single touch ECB button	Blue light is flashing	Ringtone
3-2	End phone call (during phone call)	Double touch ECB button	--	--
3-3	Reject incoming call	Long touch ECB button	--	--
3-4	Apple Siri, Google	Long touch ECB for 2 seconds	--	Beep sound notification
3-5	Low battery	--	Red in flash	Low battery every 30 sec.
3-6	Charging	--	Red light On(Earbuds)	--
			Blue light Flash (Charging Case)	--
3-7	Fully charged	--	Red Light Off (Earbuds) Blue light Always On (Charging Case)	--
3-8	Ambient Mode ON	Double touch Right ECB	--	- Beep sound notification
3-9	Ambient Mode OFF	Double touch Right ECB	--	- Beep sound notification

Personalize your fit

Air Twins² comes with three different sizes of interchangeable ear tips. A pair of ear tips is pre-mounted to the earphones. Make sure the caps seal your ear completely which leads to a proper sound quality. We recommend to try all caps and select the most secure one.

Inserting the Earphones



The fit of earphones can greatly affect sound quality, make sure you pick the correct tips and install on the earbuds correctly and follow the step below:

1. Tilt the earbuds slightly forward and insert the ear tip into your ear
2. Adjust the fit by rotating Air Twins² backwards until you feel comfortable and secure fit

Activate and Charge

Before you can get started using Air Twins², it needs to be activated.

1. Connect the Power Case to a computer or a power source via Micro-USB cable or **simply place it on any wireless charging pad** (not included).
2. The LED indicator on the power case will started flashing and Air Twins² will start charging at the other end. We recommend you fully charge the Air Twins² power case before your first use.
3. The battery is fully charged by
Micro-USB cable - the LED indicator on the power case turns to level 4
Wireless charging pad - the BLUE LED indicator will be ON for 1 minutes and then turn Off.

Turn On Air Twins² and Setup Inter-earbuds connection

***The "L" & "R" Air Twins² earbuds were paired with each other by default, user can simply take out both earbuds from the case and it will trigger the inter-earbuds connection automatically.

Remarks: Air Twins² takes 3 seconds to turn on/off from the case, if it fails to trigger the auto-pairing function, you may turn on the earbuds by touching the ECB for 5 seconds.

Once turn on Air Twins², the LED on "L" earbud will flash in Red/Blue while the LED on "R" earbud will flash in Blue, user can put on both earbuds and a voice notification "Connected" will be provided from "L" earbud, afterwards you can pair Air Twins² with your digital device.

If user took out both earbuds but failed to trigger the inter-earbuds connection, take a look of the LED indicator, if both are flashing in red and blue, it means that you are required to reset the inter-earbuds connections. In this case, simply reset your inter-earbuds connection.

Reset the inter-earbuds connection

1. Make sure both earbuds are power off
2. Press and hold both

ECB for 8 seconds and it will flash in red and blue quickly

3. After few second, the earbuds will establish the connection with each other. The master (Left) earbud will flash in red and blue (pending for Bluetooth pairing) and the slave (Right) earbud will flash in blue every 5 seconds. A voice notification "Left channel" & "Right channel" will be triggered on-ear and you can pair Air Twins² with your digital devices after the inter-earbuds connection stage

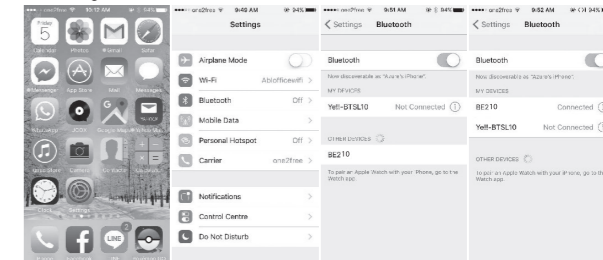
Connect Air Twins² with your digital devices

Air Twins² uses Bluetooth to connect with your digital devices. After turn on both earbuds:

1. Select "BE210" and connect via Bluetooth on your digital device
2. The Earbuds will notify you a message of "Connected"
3. Air Twins² is now ready to use

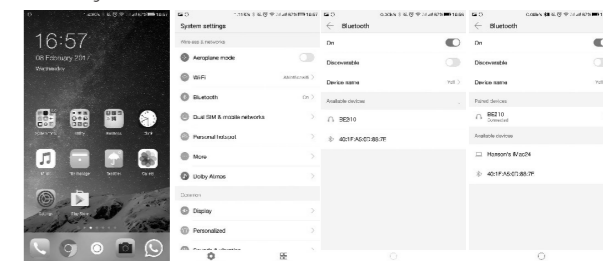
Example: iPad / iPhone

Press Settings > General > Bluetooth ON > BE210 > Pair



Example: Android 6.0 Smartphone

Press Settings > Bluetooth ON > Scan > BE210 > Pair



Ambient Mode On/Off

Ambient sound mode lets you hear your surroundings while you are listening to music outdoors. Simply short touch twice on the right ECB to turn On/Off Ambient mode function.

Playing Music

Once you are connected via Bluetooth, simply select the music on your device and Air twins² will play instantly, the following chart indicate how to remote control your music player:

Function	Action
Play/Pause a track	1 short touch on Right ECB
Next Track	1 short touch on Left ECB
Previous Track	2 short touch on Left ECB

Making or receiving calls:

Air twins² support hand-free call function for mobile devices. While using your mobile, you will have the option of using your Air twin² as the Stereo headset, please make sure it is selected within your mobile settings.

Function	Action
Accept phone call	Single touch ECB
End phone call (during phone call)	Double touch ECB
Reject a call	Long touch ECB
Apple Siri, Google	Long touch ECB for 2 seconds

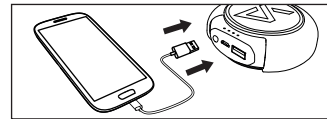
How to Charge your Earbuds

Put your earbuds back to the magnetic holder, the earbuds LED will turn to red and indicate that it is charging.

How to Charge a Mobile Device

USB output for emergency use to charge up your device when it's low battery level.

1. Connect your device to the USB output port on the Power Case with the Micro USB cable provided or use the original cable come with your device.
2. Press the Power Button on the Power Case
3. When your device is fully charged or you want to stop, disconnect the cable.



Note: The maximum total output current of this battery is 1A. Power cannot be discharged to the mobile device requiring amperage of more than 1A.

Note: Different mobile device manufacturers have different requirement for the cable which are used for charging of mobile device. Different mobile devices have different charging verification modes and new product appear from time to time. Accordingly, we do not guarantee that our product can charge all devices. Some devices require special charging cables or connectors, or we can charge these products only by using our cables or connectors. For Apple device user, please use your own original cable for charging your device.

Interpretation of the Power Case Status Indicator

Charging

- The 4 LEDs will light up and flashing one by one when the Power Case is being charged.
- When all 4 LEDs have been light up and no flashing, the Power Case battery is fully charged

Discharging

- The 4 LEDs will be off one by one when it is discharging to other device.
- When all 4 LEDs have been off, the Power Case battery is empty.

Note: It is normal for the Air Twins and device to get warm during charging and discharging, and they may get even warmer if you use your device to, for example, play video or game while charging.

Specifications

Bluetooth version: Bluetooth 5.0
Operating distance: up to 33 feet (10 metres)
Impedance: 16Ω
Earphone Sensitivity: 94 dB/mW
Frequency: 20Hz – 20KHz
Playtime: Up to 2-3 hours
Talk time: Up to 3.5 hours
Maximum playtime with power case: Additional 30 hours music/talk time
Input Voltage: 5V/1A
Output Voltage: 5V/1A
Battery Capacity: 1,500mAh
Charging time: For earphone - 1.5 hour
For Power case – 2 hours via USB cable or 3 hours via Wireless charger
Dimension: 23.5 x 8 x 16.5 mm(for earphone), Dia.84 x 30mm (for Power case)
Weight: 10 grams for pair of earbuds, 105 grams for Power case

www.yellacoustic.com
Designed by Yell! in Hong Kong
Made in China

Troubleshooting

Not turning on after take out the earbuds from the case

- Make sure the Air Twins² is fully charged
- Make sure the Air Twins² is switched on.
- Place the earbuds back to the case again and take it out again after 3 seconds

No connection between Air Twins² and your Bluetooth device.

- Make sure the Air Twins² is fully charged
- Make sure the Air Twins² is switched on.
- Make sure your Bluetooth device is available and supports Bluetooth Advance Audio Distribution profile.
- Make sure the Air Twins² is within range of your Bluetooth device.

Audio is not coming out from the Bluetooth Earbuds after Bluetooth device successfully paired.

- Make sure the Bluetooth device volume is set to a comfortable listening level.
- Try to reconnect your device with Air Twins²

Safety information

Read all information and warnings before using Air Twins². Improper use of this product may lead to the product being damaged and you (the buyer, not the dealer) will be held responsible for damages such as overheating, the release of toxic fumes, fire or explosion.

- Do not attempt to charge Air Twins² by using any other method other than a USB charger, power bank or computer
- Do not modify or disassemble the battery
- Do not dismantle or modify Air Twins² in any way
- Do not use the battery in bathrooms etc. Do not expose Air Twins² to moisture or immerse it in liquid.
- Keep Air Twins² dry at any time.
- Do not keep Air Twins² in an environment that has excessively high temperatures, including intense sunshine
- Do not throw this product into a fire or leave in a hot environment. Avoid dropping or any other impact or friction to this product
- Do not place Air Twins² on flammable materials, such as bedding or carpets during charging
- Do not touch Air Twins with wet hands
- Disconnect the USB connector from Air Twins²'s Power Case once fully charged
- Only use this product within the following temperatures: 0° - 40°



- Do not connect input and output in reverse
- Do not charge Air Twins² in excess of the rating suggested
- If any issue arises when using Air Twins², disconnect the USB connector from the computer port and contact your dealer
- In the unlikely event that any liquid from the inside of this product gets into your eyes, do not rub your eyes. Wash your eyes immediately with clean water and consult a physician
- All Yell! Acoustic's products have been tested comprehensively to ensure quality. If you encounter any unusual heat, discoloration or product distortion during charging or storage, please stop using it immediately and contact the dealer. These issues may cause leakage, heat, smoke or ignition of Air Twins
- Air Twins² is not intended for use by persons (including children) with reduced physical, sensory or mental capabilities (or lack of experience and knowledge) unless they have been given supervision or instructions concerning the use of Air Twins² by a person responsible for their safety. Children should be supervised to ensure that they do not play with Air Twins², this is not a toy.

Legal Liability

Air Twins² can only be used with compatible products and the Power Case can be used only with matching electronic equipment. Please read your equipment compatibility instructions to determine whether Air Twins² matches your equipment requirements. The manufacturer will not be liable for any damage to your electronic equipment during the use of this product. Yell! Acoustic will not held responsible for any equipment or accessories not suitable for use with Air Twins². The manufacturer will not be held liable for damage caused by misuse or damage incurred by the buyer or the third party rising from any intentional or unintentional use of Air Twins². As mentioned above, the manufacturers shall not be held liable for damage caused by misuse of the Air Twins².

FCC Statement

This device complies with Part 15 of the FCC rules. Operation is subject to the following two conditions: (1) this device may not cause harmful interference, and (2) this device must accept any interference received, including interference that may cause undesired operation.

The manufacturer is not responsible for any radio or TV interference caused by unauthorized modifications or change to this equipment. Such modifications or change could void the user's authority to operate the equipment.

This radio transmitter (identify the device by certification number or model number if Category II) has been approved by Industry Canada to operate with the antenna types listed below with the maximum permissible gain indicated. Antenna types not included in this list, having a gain greater than the maximum gain indicated for that type, are strictly prohibited for use with this device.

This equipment has been tested and found to comply with the limits for a Class B digital device, pursuant to part 15 of the FCC Rules. These limits are designed to provide reasonable protection against harmful interference in a residential installation. This equipment generates, uses and can radiate radio frequency energy and, if not installed and used in accordance with the instructions, may cause harmful interference to radio communications. However, there is no guarantee that interference will not occur in a particular

installation. If this equipment does cause harmful interference to radio or television reception, which can be determined by turning the equipment off and on, the user is encouraged to try to correct the interference by one or more of the following measures:

- Reorient or relocate the receiving antenna.
- Increase the separation between the equipment and receiver.
- Connect the equipment into an outlet on a circuit different from that to which the receiver is connected.
- Consult the dealer or an experienced radio/TV technician for help.

The device has been evaluated to meet general RF exposure requirement

Caution:

Any changes or modifications to this device not explicitly approved by manufacturer could void your authority to operate this equipment.