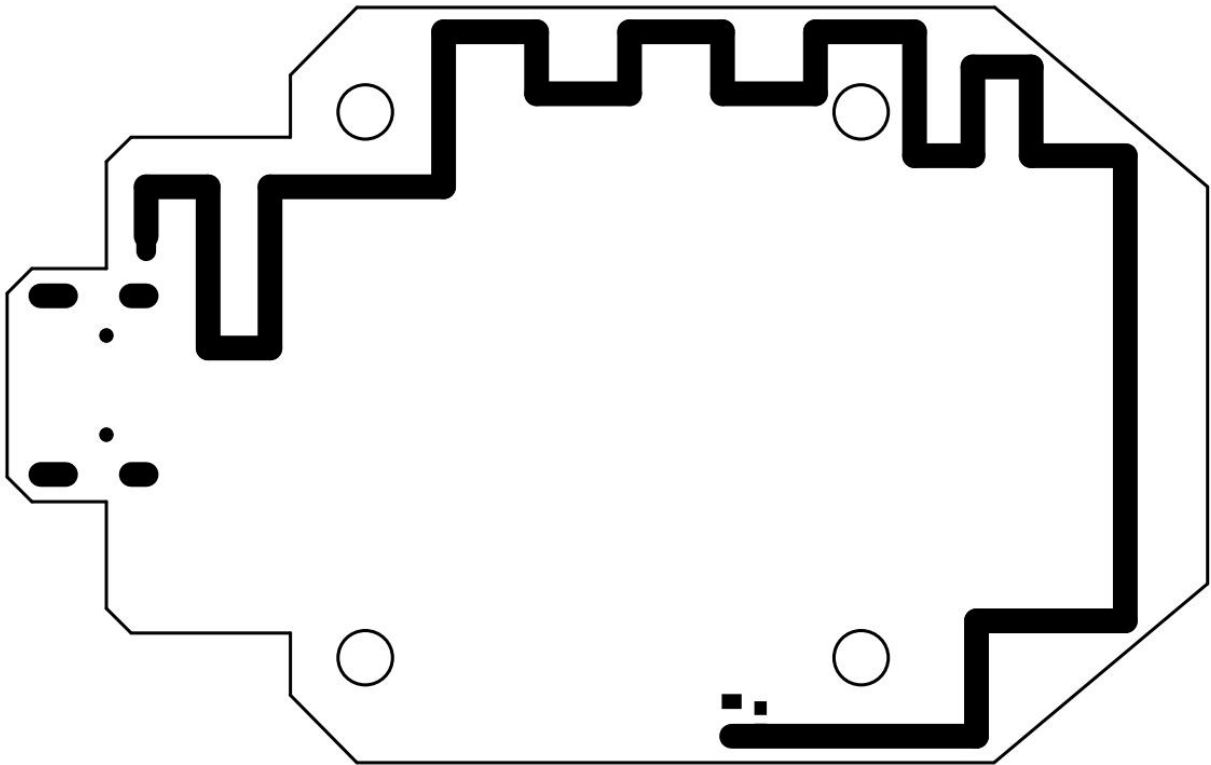


2045 Onboard antenna parameters			
Frequency Range	433MHZ	Polarization	
Impedance	50 Ω	Radiation direction	omnidirectional
VSWR	≤ 2.0	Power	/
Gain	-3dBi	Bandwidth	/
size	120mm*1mm*10z		
materia	Copper foil (covered with green oil)		

size: 120mm*1mm*10Z



S11 (VSWR , Return loss , Smith)

