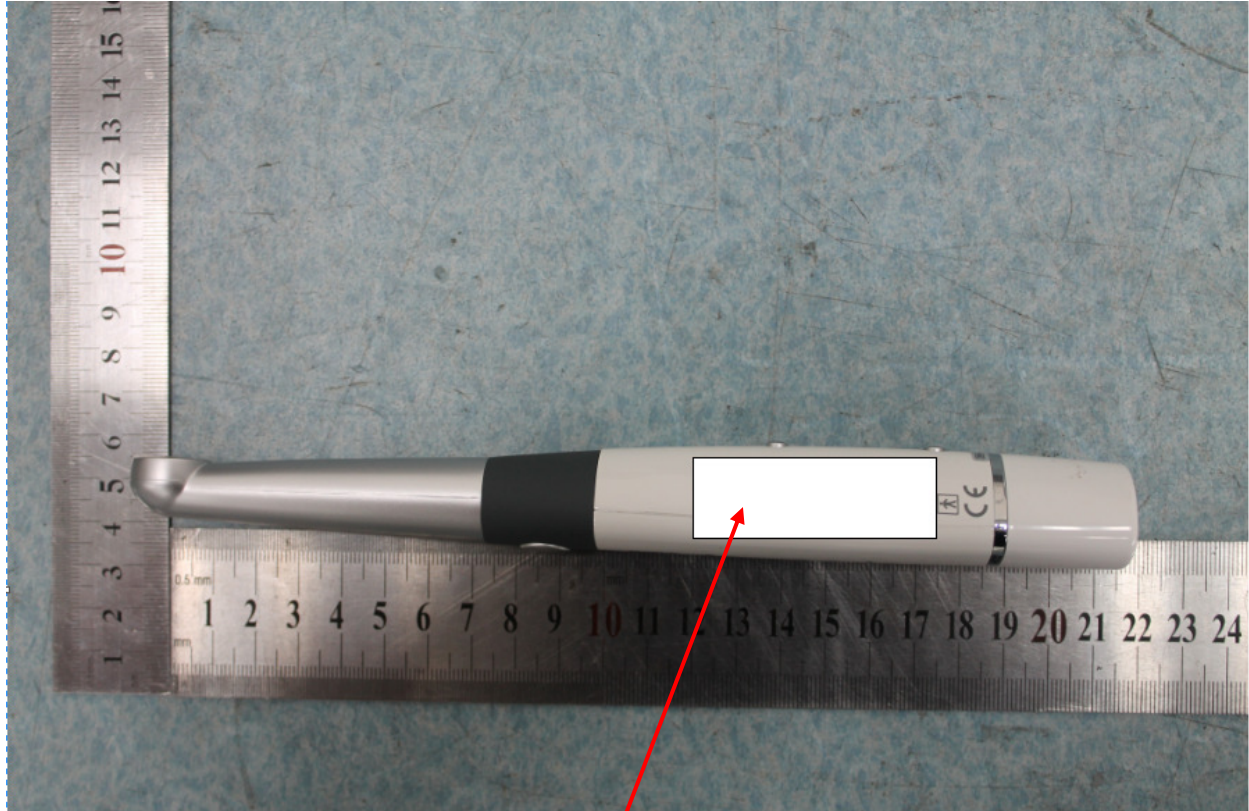




Carestream Dental LLC
3625 Cumberland Boulevard, Suite 700
Atlanta, GA USA 30339

FCC ID: 2ASFG-CS1500H
IC: 24914-CS1500H



Product label with FCC ID: 2ASFG-CS1500H and IC: 24914-CS1500H will be laser printed at this place. The statement according to FCC part 15 §15.19(a)(3) has been added in CS 1500 Safety & Regulatory Guide, page 22.



Carestream Dental LLC
3625 Cumberland Boulevard, Suite 700
Atlanta, GA USA 30339

FCC ID: 2ASFG-CS1500H
IC: 24914-CS1500H

Product label with FCC ID and IC ID:

