

 Keychron

Q6 Max Wireless Mechanical Keyboard

Knob
Version

Fully Assembled Version

Keyboard

1x Fully Assembled Keyboard

Including

1x Aluminum Case

1x PCB

1x PC Plate

1x Sound Absorbing Foam

1x IXPE Foam

1x PET Foam

1x Latex Bottom Pad

1x Bottom Case Acoustic Foam

1x Bottom Case PET Foam

16x Gaskets (12 Installed and 4 in the Box)

8 sets x Stabilizers

1 set x Keycaps (PBT Double-shot)

1 set x Switches



Cable

1x Type-C to Type-C Cable

1x Type-A to Type-C Adapter

1x Extension Adapter for Receiver

Receiver

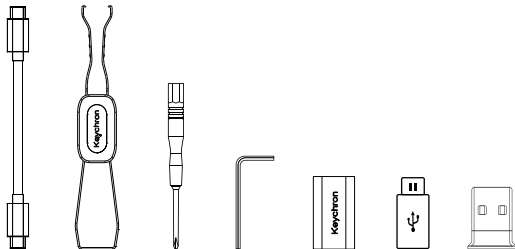
1x Type-A 2.4 GHz Receiver

Tools

1x Keycap & Switch Puller

1x Screwdriver

1x Hex Key



Barebone Version

Keyboard Kit

1x Keyboard Kit (Without Keycaps & Switches)

Including

1x Aluminum Case

1x PCB

1x PC Plate

1x Sound Absorbing Foam

1x IXPE Foam

1x PET Foam

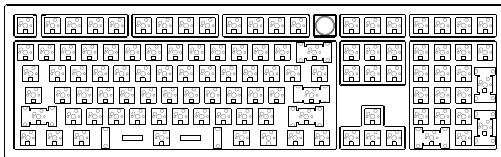
1x Latex Bottom Pad

1x Bottom Case Acoustic Foam

1x Bottom Case PET Foam

16x Gaskets (12 Installed and 4 in the Box)

8 sets x Stabilizers



Cable

1x Type-C to Type-C Cable

1x Type-A to Type-C Adapter

1x Extension Adapter for Receiver

Receiver

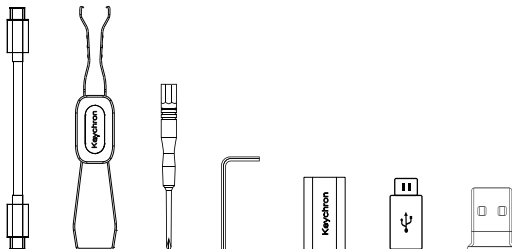
1x Type-A 2.4 GHz Receiver

Tools

1x Keycap & Switch Puller

1x Screwdriver

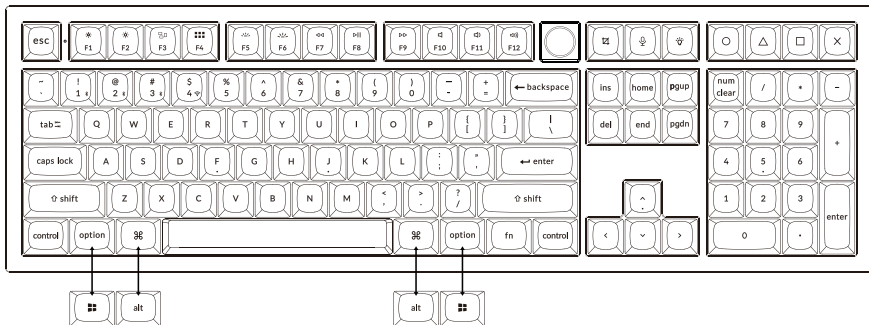
1x Hex Key



Quick Start Guide

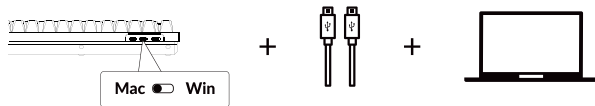
If you are a Windows user, please find the appropriate keycaps in the box, then follow the instructions below to find and replace the following keycaps.

Mac / Windows



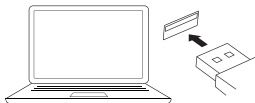
1 Switch To The Right System

Please make sure the system toggle on the top left corner has been switched to the same system as your computer's operating system.

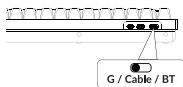


2 Connect 2.4 GHz Receiver

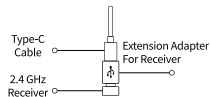
Connect the 2.4 GHz receiver to the device USB port.



Switch toggle to 2.4 GHz mode



G = 2.4 GHz

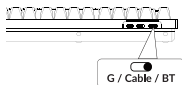


Note: For the best wireless experience, we recommend using the extension adapter for receiver and putting the 2.4 GHz receiver somewhere on your desk close to your keyboard for a low rate of latency and fewer signal interferences.

3 Connect Bluetooth



Switch toggle to Bluetooth

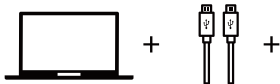


Press fn + 1 (for 4 seconds) and pair with device named Keychron Q6 Max

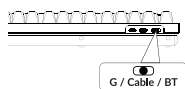


fn + 1

4 Connect Cable



Switch toggle to Cable



5 The VIA Key Remapping Software

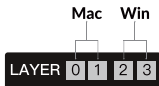
Please visit usevia.app to use the online VIA software to remap the keys.
If the VIA cannot recognize your keyboard, please reach our support to get the instruction.



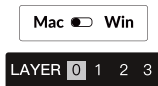
- *The online VIA software can only run on the latest version of Chrome, Edge, and Opera browsers yet.
- *VIA only works when the keyboard is connected by wire to the computer.

6 The Layers

There are four layers of key settings on the keyboard. The layer 0 and layer 1 are for the Mac system. The layer 2 and layer 3 are for the Windows system.



If your system toggle is switched to Mac, then the layer 0 will be activated.

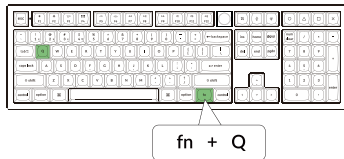


If your system toggle is switched to Windows, then the layer 2 will be activated. Remember that if you are using it in Windows mode, please make changes to the layer 2 instead of the top layer (the layer 0). This is a common mistake people are making.

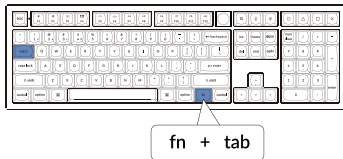


7 The Backlight

Press **fn + Q** to change the lighting effect

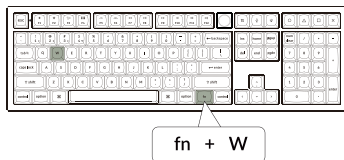


Press **fn + tab** to turn the backlight on/off

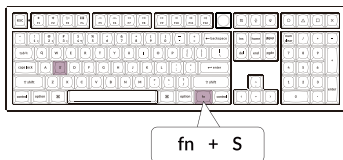


8 Adjust The Backlight Brightness

Press **fn + W** to increase the backlight brightness

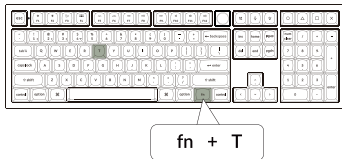


Press **fn + S** to decrease the backlight brightness

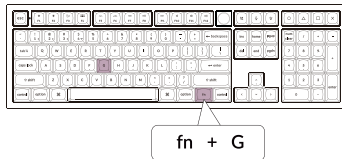


9 Adjust The Backlight Speed

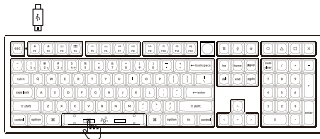
Press fn + T to increase the light effect speed



Press fn + G to decrease the light effect speed



10 Factory Reset



Troubleshooting? Don't know what's going on with the keyboard?

1. Download the right firmware and QMK Toolbox from our website.
2. Unplug the power cable and switch the keyboard to Cable mode.
3. Remove the space bar keycap to find the reset button on the PCB.
4. Hold the reset key first, then plug the power cable into the keyboard.
Release the reset key after 2 seconds, and the keyboard will now enter DFU mode.
5. Flash the firmware with the QMK Toolbox.
6. Factory reset the keyboard by pressing fn + J + Z (for 4 seconds).

*Step by step guide can be found on our website.

11 Warranty

The keyboard is highly customizable and easy to be rebuilt. If anything goes wrong with any of the keyboard components of keyboard during the warranty period, we will only replace the defective parts of the keyboard, not the whole keyboard.



Q6 MAX WIRELESS MECHANICAL KEYBOARD SPECIFICATIONS

Number of keys: 108

Switch type: Mechanical

Battery: 4000mAh

Wireless working time (RGB): Up to 100 hours (Lowest brightness)

Charging time: Around 5 hours

Charging port: USB Type-C

Mode: 2.4 GHz/ Cable / Bluetooth

Wireless operating distance: Within 10 meters (open space)

Name of Bluetooth device: Keychron Q6 Max

Operating environment: -10 to 50°C

Technical specifications can be subjected to change without notice, we apologize for any inconvenience caused.