



BladeMaster PRO 87K

USER GUIDE



Drevo Inc.

www.drevo.net

Made in China

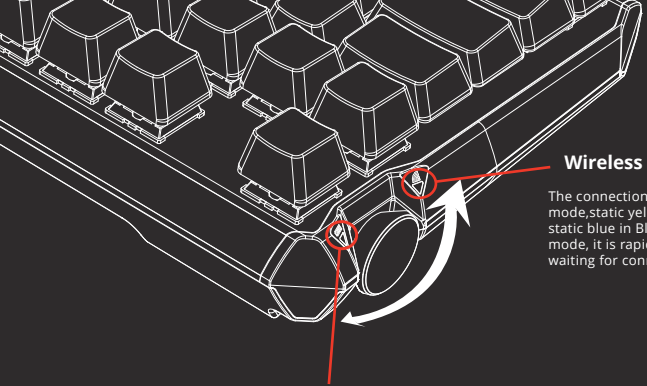


@DREVO_US



ARMYOURDESK.com @drevo.net

2-2-1509, No. 10 Wangjing Street, Beijing, China

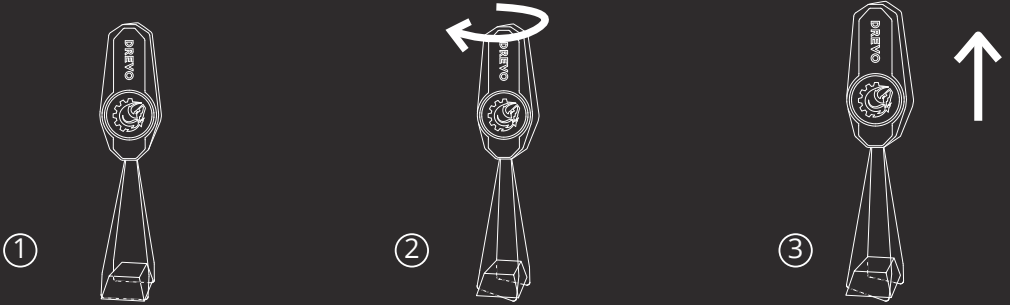


Wireless Connection Indicator

The connection indicator is static white in wired mode, static yellow in 2.4GHz wireless mode, and static blue in Bluetooth mode. And in Bluetooth mode, it is rapidly blinking when the keyboard is waiting for connecting.

Power Indicator

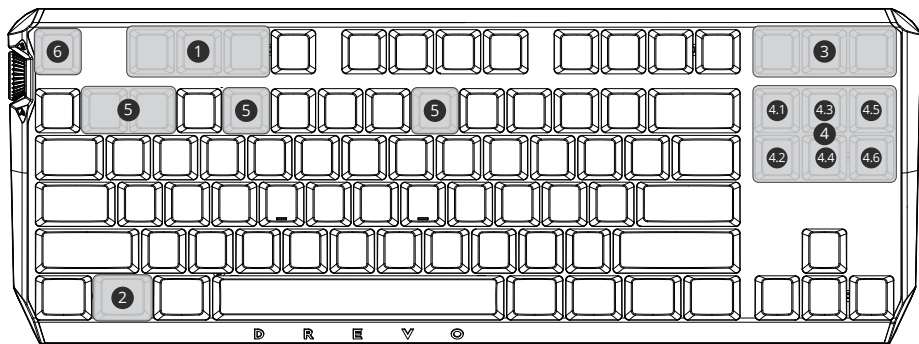
Power indicator will become green breathing when charging, no light when charging is finished, and red breathing when power is under 20%.



Contents

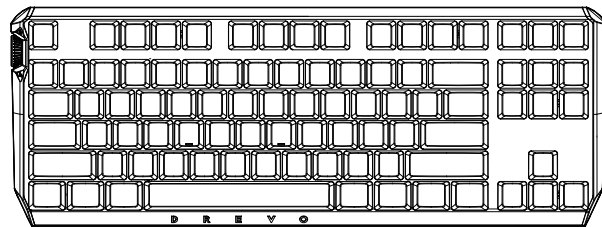
- Introduction 1
- English 5
- 简体 6
- Deutsch 7
- español 8
- Italiano 9
- français 10
- 한국어 11
- 日本語 12

Introduction

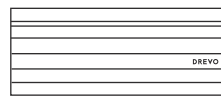


- FN+**
- ① On-board memory setting
 - ② Windows Lock
 - ③ Switch among three devices
 - ④ Genius-Knob Functions
 - ⑤ Report Rate Adjustment
(1000Hz/1ms, 500Hz/2ms, 250Hz/4ms, 125Hz/8ms)
 - ⑥ Factory Reset

- FN+**
- ④.1 Lighting Modes Switching
(Static, Spectrum, Rainbow, Power Gauge, Breathing, Twinkling Stars, Reactive, Marquee, Aurora, Icey Fire)
 - ④.2 Brightness Adjustment
 - ④.3 Backlit Rate Adjustment
 - ④.4 Backlit Color Switching
 - ④.5 Music controller
 - ④.6 Customization
(Default setting is page up/page down/Home/End)



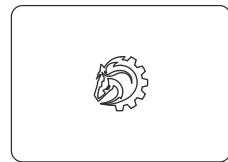
①



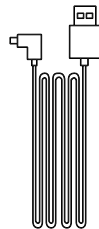
④



⑤



⑥



②



⑦



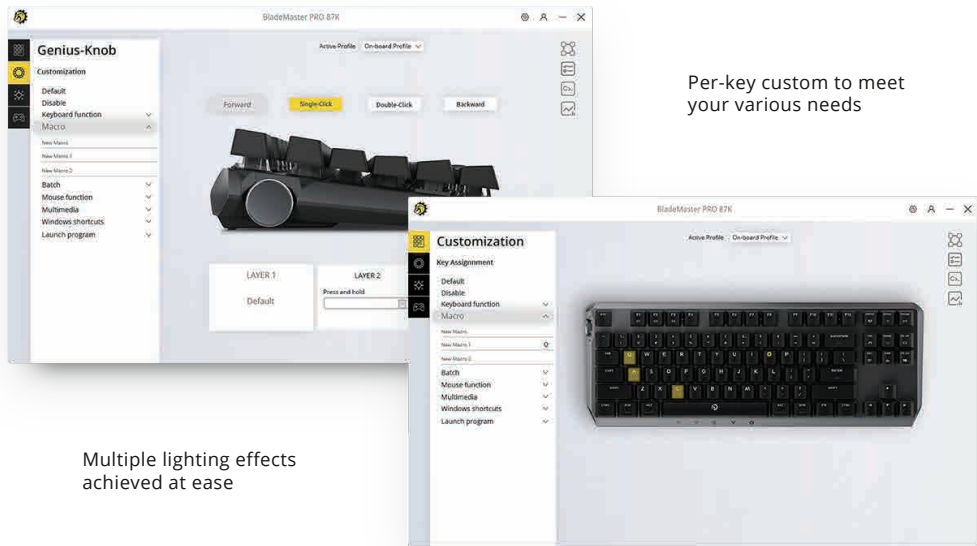
③



⑧


- ① Keyboard
- ② USB Type-C to USB 2.0 cable
- ③ Keycap puller
- ④ Dust sheet
- ⑤ Small brusher
- ⑥ Operating manual/After-sale service card
- ⑦ 2.4GHz USB Receiver
- ⑧ Sticker

DREVO POWER CONSOLE Full-featured Cloud Software



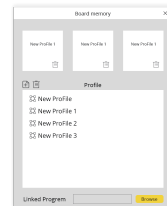
Per-key custom to meet your various needs

Multiple lighting effects achieved at ease

 <p>Macro One keystroke for all you want</p>	 <p>Custom Profile Save your personal settings</p>	 <p>Cloud Sync Your cloud assistant goes with you anywhere</p>	 <p>Batch Script You can write a batch file and bind it to any key</p>	 <p>Custom game settings Your favourite game settings can be auto configured for ease of use</p>
--	--	--	--	--

Updating your setting profile into on-board memory of keyboard

1. Open profile management;
2. Drag the profile you chose to zones of on-board memory (three zones in total);
3. Press FN+CTRL+F1/F2/F3 to activate setting profiles (G1/G2/G3)



System Requirements

- wired connection: Windows xp and above, mac OS
- Bluetooth connection: Windows 8.1 and above, Mac OS 10.10 and above, Android 4.4 and above, IOS 7.0 and above
- 2.4GHz wireless connection: Windows, Mac OS

Attention:

1. Please make sure that your device supports Bluetooth 4.0 BLE well before connecting by Bluetooth 4.0 BLE.
2. Please plug the FlashLink 2.4GHz wireless receiver in USB port which is as close as possible to your keyboard.
3. If you are using a desktop computer, please plug the Bluetooth dongle into the USB port on the motherboard, and move the other wireless receivers or dongles which work in 2.4GHz frequency away from it.

Technical Support

- 1 year limited keyboard manufacturer's warranty
- Free online technical support (support@drevo.net)

I. Connecting the keyboard

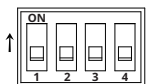
- Connect the keyboard to USB port in PC/laptop via USB Type C cable.
- Long press FN+scroll lock to enter pairing mode of Bluetooth(when wireless indicator flash rapidly with bluelight), that means yourkeyboard is ready to connect device.
- Plug the wireless USB receiver into USB port of pc/laptop (Highly recommended).

II. Knob Controlling

Combo keys	Clockwise Anticlockwise	Single click	Double click
	Switch different backlit modes	Turn on/off the main backlit	Turn on/off the side backlit
	Adjust backlit brightness	Turn on/off the main backlit	Turn on/off the side backlit
	Accelerate/decelerate backlit	Turn on/off the main backlit	Turn on/off the side backlit
	Switch different pre-set backlit colors	Turn on/off the main backlit	Turn on/off the side backlit
	Adjust the volume	Pause/Play	The next
	Page Up/Page Down	Home	End

*The FN + Page Down default setting is PageUp,PageDown,Home and End, you can program it with DPC.

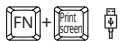
III. Using DIP switch



- Exchange capslock and left ctrl
 - Mac mode
 - Dvorak layout
 - Power On/Off Switch
- DIP 1 is on
DIP 2 is on
DIP 3 is on
DIP 4

The default setting is OFF, when operating the DIP switch, please use a stick.

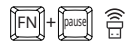
IV. Changing the connection of keyboard



Wired mode



Bluetooth mode



2.4GHz wireless mode

V. DPC(DREVO POWER CONSOLE software) User Guide

- Download the software on DREVO official website www.drevo.net/page/software
- Connect the keyboard to PC via USB-to-TypeC cable
- Install DPC
- Follow the instructions to customize the keyboard (Click "?" for detailed instructions)

VI. TroubleShooting

- Please find another PC/Laptop to verify if possible.
- Please plug the keyboard into another USB port of PC/Laptop.
- Upgrade the firmware to the latest version.
- Confirm the setting like " USB Keyboard Support" or " USB Legacy Mode " is ENABLED in your BIOS.
- Regarding the Bluetooth connection problem, please verify on mobile phone or laptop whether the same problem occurs.
- For 2.4GHz wireless connection problem, please replug the receiver and long press FN+Pause to pair again.

VII.Key Combinations

- FN+1=1ms/1000Hz
- FN+2=2ms/500Hz
- FN+4=4ms/250Hz
- FN+8=8ms/125Hz
- FN+Left Win key=Lock windows
- FN+ESC(Long press for 5 seconds)=Factory reset

VIII. Contact

Before contacting with our tech support, please prepare the following information on hand:

- Item and SN number
- Operating system info

Official website : www.drevo.net

Facebook : @drevo.net

Twitter: @DREVO_US

E-mail: support@drevo.net

IX. General user information

We reserve the right to make technical modifications which serve the development of our products. Please benoted that improper use andstorage can lead to faults and damage to the products. These instructions are only valid for the supplied product.

X. Warranty

Unauthorized modifications or repairs done to the product will void the warranty. For more information about the warranty please check: www.drevo.net/page/warranty.

This device complies with part 15 of the FCC Rules. Operation is subject to the following two conditions: (1) this device may not cause harmful interference, and (2) this device must accept any interference received, including interference that may cause undesired operation.

Any changes or modifications not expressly approved by the party responsible for compliance could void the user's authority to operate the equipment.

NOTE: This equipment has been tested and found to comply with the limits for a Class B digital device, pursuant to Part 15 of the FCC Rules. These limits are designed to provide reasonable protection against harmful interference in a residential installation. This equipment generates, uses and can radiate radio frequency energy and, if not installed and used in accordance with the instructions, may cause harmful interference to radio communications.

However, there is no guarantee that interference will not occur in a particular installation.

If this equipment does cause harmful interference to radio or television reception, which can be determined by turning the equipment off and on, the user is encouraged to try to correct the interference by one or more of the following measures:

- Reorient or relocate the receiving antenna.
- Increase the separation between the equipment and receiver.
- Connect the equipment into an outlet on a circuit different from that to which the receiver is connected.
- Consult the dealer or an experienced radio/TV technician for help.

The device has been evaluated to meet general RF exposure requirement. The device can be used in portable exposure condition without restriction