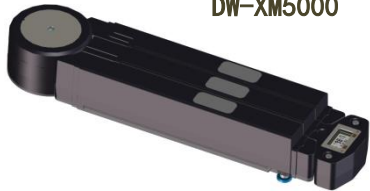


Use Manual

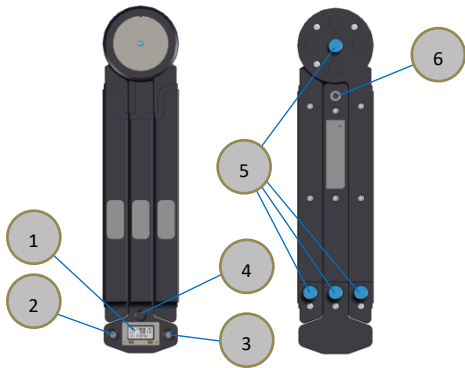
Tri-scale smart bluetooth scale

DW-XM5000



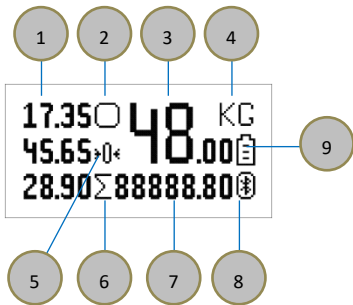
- * Do not disassemble the electronic scale by yourself. Please read this manual carefully before use.
- * Please do not use the electronic scale in high temperature and humid places.
- * Contains a lithium battery. Please do not dispose of used electronic scales .
- * Do not hit the impact and press the electronic scale.
- * Do not disassemble the electronic scale and place it in water or fire.
- * Please place the scale on a stable flat table or floor. Do not place it on a table with unstable vibration.
- * When not using the scale for a long time, please charge it at the right time to extend the battery life.

Product spec



- ① Display(OLED white display , 128x64)
- ② Power button(click-on , press-off)
- ③ Zero button(click→zero,double click→Clear accumulation)
- ④ Speaker
- ⑤ Adjustment buttonx4
- ⑥ charging interface

Display Instruction



① Three recent weight information displays

② Weight stability indicator display

③ Current weight information display

④ Weight units show kilograms kg

⑤ Zero point symbol display

⑥ Cumulative symbol display

⑦ Cumulative weight display

⑧ Bluetooth connection display symbol (press<zero>3 seconds later show Bluetooth address)

⑨ Battery power symbol display

Operation Instruction



- 1、 Open the scale like pic shows,put it on the stable table
- 2、 click<power>button to turn on, and start weighing after the weight is zero.
- 3、 After the weight is stable, the voice broadcasts will speak current weight information
 - In the weighing mode, if the electronic scale is not weighted within 10 minutes, it will automatically shut down.
 - In the weighing mode, if the electronic scale is not weighted within 3 minutes, it will enter the sleep mode.
 - In sleep mode, No display no Bluetooth signal, no voice broadcast.
 - In sleep mode, you can wake up by tapping the zero button.

Specification

Model	DM-XM5000		Open size	Length 540mm , height 50mm
Max	50kg/100kg		Close size	L*W*H303mm*66mm*50mm
Verification scale value	0.1kg		Battery	Li 3.7V 2000/4000mAh
Actual scale value	0.05kg		Communication method	Bluetooth 5.0, transmission distance 8 meters
Relative working humidity	≤85%RH		Display	OLEDwhite
Button style	Press		Working temperature	-10°C~40°C
Color	Black		speaker	Support weighting information voice

FCC STATEMENT :

This device complies with Part 15 of the FCC Rules. Operation is subject to the following two conditions:

- (1) This device may not cause harmful interference, and
- (2) This device must accept any interference received, including interference that may cause undesired operation.

Warning: Changes or modifications not expressly approved by the party responsible for compliance could void the user's authority to operate the equipment.

NOTE: This equipment has been tested and found to comply with the limits for a Class B digital device, pursuant to Part 15 of the FCC Rules. These limits are designed to provide reasonable protection against harmful interference in a residential installation. This

equipment generates uses and can radiate radio frequency energy and, if not installed and used in accordance with the instructions, may cause harmful interference to radio communications. However, there is no guarantee that interference will not occur in a particular installation. If this equipment does cause harmful interference to radio or television reception, which can be determined by turning the equipment off and on, the user is encouraged to try to correct the interference by one or more of the following measures:

- Reorient or relocate the receiving antenna.

- Increase the separation between the equipment and receiver.

- Connect the equipment into an outlet on a circuit different from that to which the receiver is connected.

Consult the dealer or an experienced radio/TV technician for help.

FCC Radiation Exposure Statement:

The device has been evaluated to meet general RF exposure requirement. The device can be used in portable exposure condition without restriction.