

Welcome to Waggit®!

1

On behalf of the entire Waggit team, welcome to "the pack" and thank you in advance for helping keep our fur babies happy, healthy and safe. Just like you, we're dog lovers through and through, who believe life truly is better because of dogs. Because of this (and as a thank you to those who have brightened our lives and helped us through our ups and downs), our mission at Waggit is to strengthen bonds and prolong the lives of those who bring so much joy to our lives every day.

We hope you and your fur baby come to love Waggit as much as we do, and can't wait to see pictures and hear your Waggit stories along the way.

Thank you again for your support and wag on!

Susan Sierota Carrie Dolan

Susan & Carrie



Susan Sierota
Founder/CEO

Dylan



Carrie Dolan
Co-Founder/CMO

Moose & Teddy

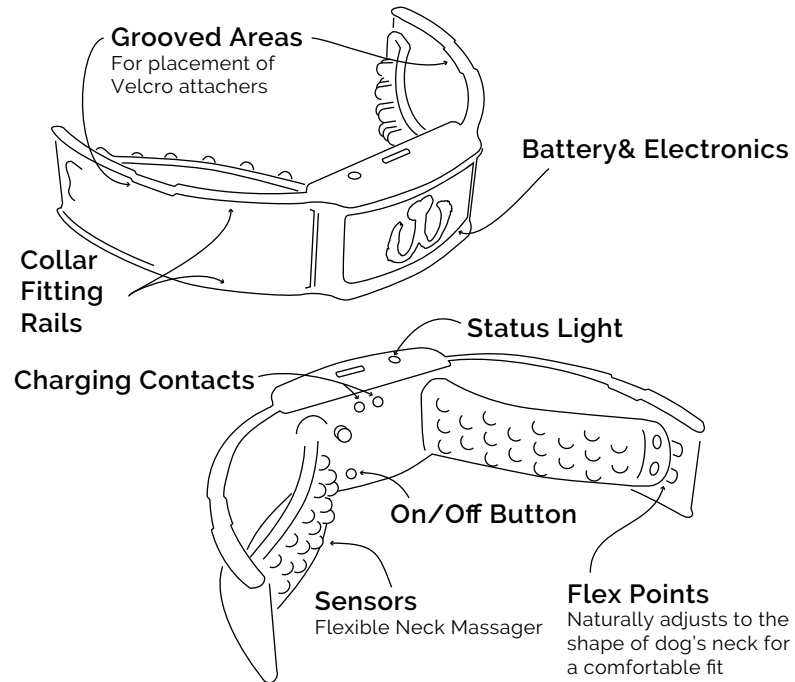
What's in the box?

2

- (1) Waggit® health and well-being monitor
 - (1) Waggit® charging dock
 - (1) Charging cable
 - (2) Waggit® collar attachment straps
 - (1) Quick Start Guide - what you're reading now
- Please Note - Waggit fits any standard 1" collar.

Meet your Waggit® Monitor

No sniffing required!

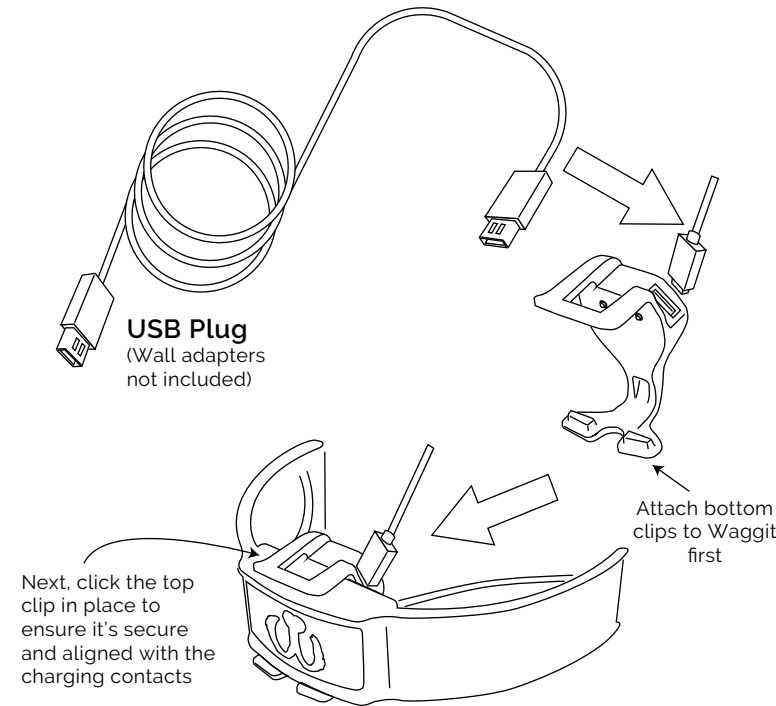


Charge It!

3

Fully Charge your Waggit before assembling or using. Attach the Waggit charger to your Waggit as shown below ensuring contacts are aligned. Plug the cable into the Waggit charger, then plug the cable into any USB compatible port. A solid "yellow" indicator light will come on when charging, and a solid "green" light will show when it is fully charged.

Waggit will take up to two hours to fully charge, and can be charged with or without collar attached.



Downloading and Setting Up the App*

4

While your Waggit device is charging, set up the app on your smartphone.

Download:



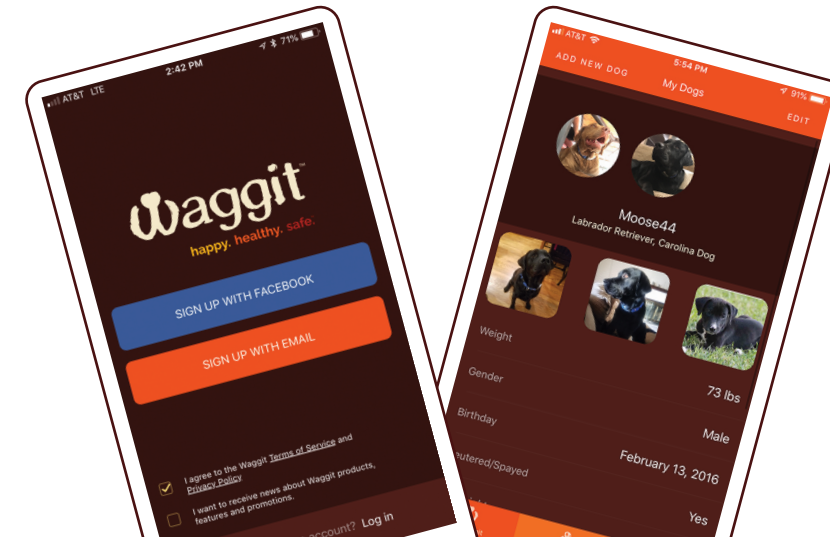
From Either:



*Please note, Waggit requires Android 5.0 or higher and iPhone 6 or newer.

Create Account

Once the Waggit app is installed, sign up with either email or Facebook and follow the prompts to create your account and set up your dog's profile.



happy. healthy. safe.®

Join our Digital Pack
waggit.dog



@waggit_dog



@waggit_dog



waggitdog

Pairing Your Waggit® Collar

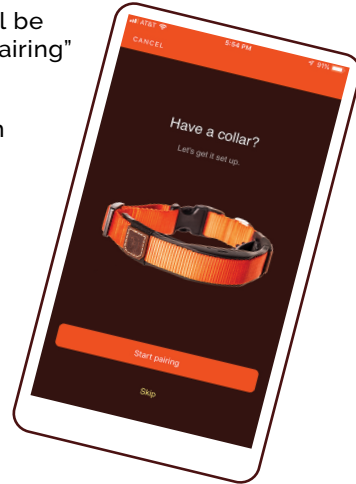
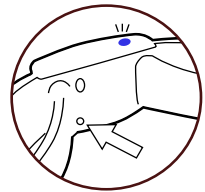
5

Once you've charged the collar, pair the Waggit with your phone by doing the following:

(1) Ensure your phone's Bluetooth is on, and that the collar is next to you. (Android users may also need to enable location services in Settings, to activate Bluetooth.)

(2) Open the Waggit app, and you'll be prompted with a screen to "Start Pairing"

(3) Quickly press the on/off button on your Waggit. Once you see a solid blue indicator light, tap "Start Pairing" on the app.



(4) Once paired, the app will indicate your device has paired successfully.

Feeling unsure? Watch a video tutorial at waggit.dog/connect

Please note, the Waggit device and app should be paired before putting the collar on your dog.

Assemble Your New Collar & Get Wagging!

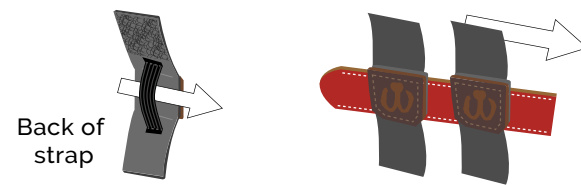
6

A proper fit is important to ensure optimal performance of the collar, and a comfortable fit for your fur baby.

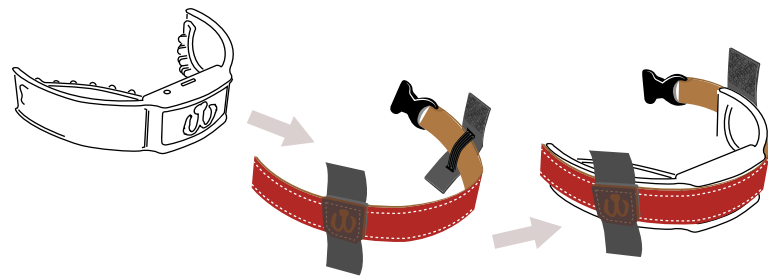
(1) Ensure Waggit device is fully charged, paired with the app, and turned on.

(2) Ensure your dog's 1" collar is adjusted for the right "current" fit, plus an additional 1 to 1.5 inches to comfortably accommodate the Waggit.

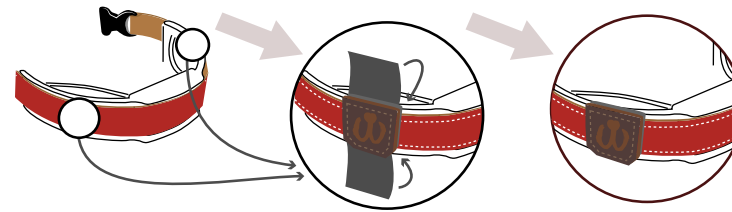
(3) Slide collar through the loops of the Waggit Velcro straps.



(4) Position the Waggit with "W" facing up and place 1" collar around device, so collar is sitting flush inside rails and collar clip is at back of neck.



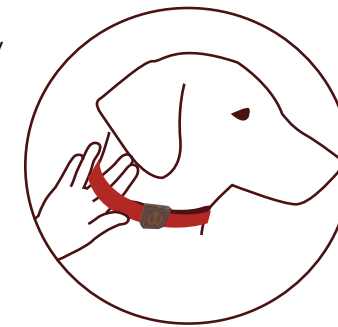
(5) Adjust Velcro straps to align in grooved section on each side of device with "W" logo facing up, and attach Velcro on inside of device.



(6) Put the collar on your dog with the Waggit centered under the neck, allowing 2-3 fingers between collar and neck (under your dog's ear). The 2-3 finger fit test should not be done under the massage fingers, as they're meant to shape your dog's neck. The Waggit should be worn in a normal position...not too loose nor too tight, and adjusted accordingly during the first day of wearing it.



Maggie models her Waggit



You're all set!

Questions about the app can be found in the "FAQs" section under the "More" screen.

Now go play!

Waggit® Support

8

We're here to help!

Should you have any questions you can contact support in the app via "More > Pack Support" or go to <https://waggit.dog/pages/faqs>

Other Important Information

•The Waggit monitor is not a medical device. Any health-related concerns should be directed to your pet's veterinarian. See additional information at www.waggit.dog.

•While the Waggit device is waterproof, it is not recommended to submerge under water. To clean, simply wipe down with a damp cloth.

•The Waggit device contains a lithium polymer battery, so please recycle or dispose of properly.

•Waggit reserves the right to provide updates, enhancements, features and software changes.

•Waggit, the Waggit logo and the Waggit health and well-being monitor are trademarks of Vibrissa Inc., and are registered in the U.S. Patents pending.

•Modifications made to the Waggit could void the user's authority to operate the equipment.

•Waggit cellular subscription required.

This device complies with Part 15 of the FCC Rules. Operation is subject to the following two conditions: (1) This device may not cause harmful interference, and (2) this device must accept any interference received, including interference that may cause undesired operation.



Waggit®

Quick Start Guide