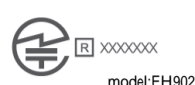
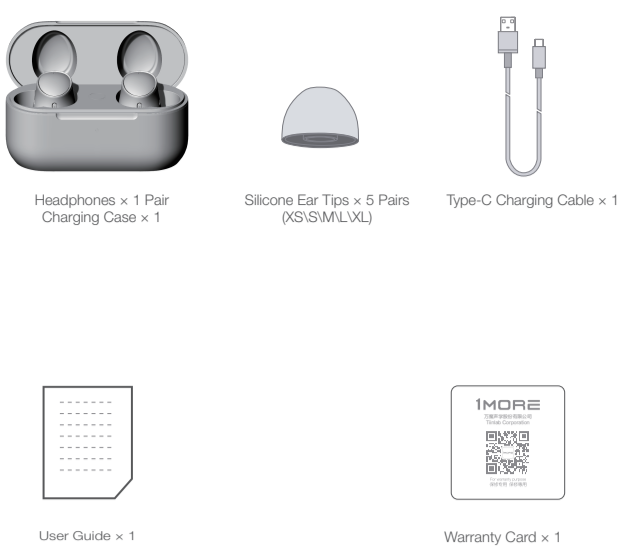


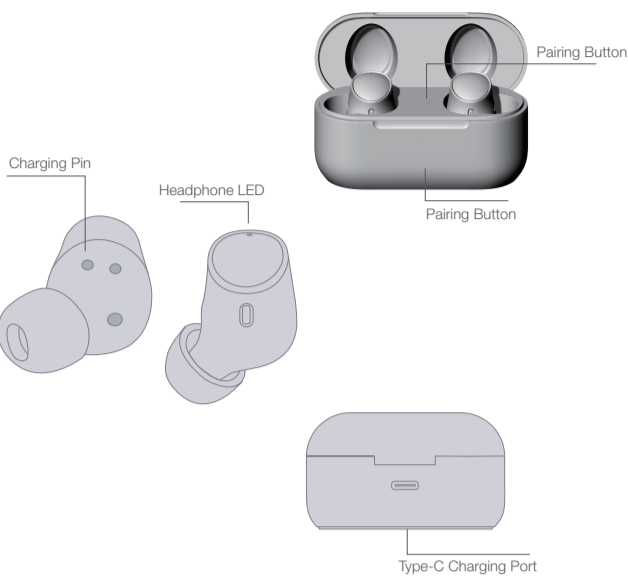
IC : 24662-EH02R
IC : 24662-EH02L
HVIN : EH02R
HVIN : EH02L
FCC ID : 2ASDIEH02R
FCC ID : 2ASDIEH02L



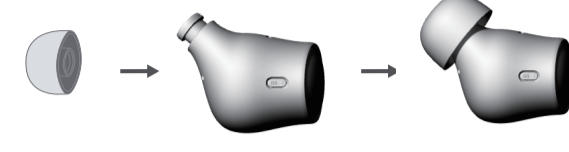
Inside The Box



Product Overview



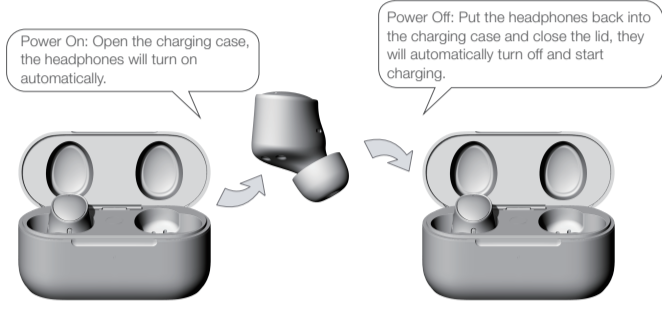
Replace



Placement



Power

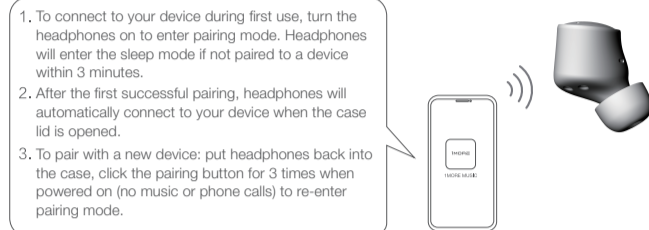


* Above functions are available for either earbud in individual or Stereo mode.

Headphones Pairing

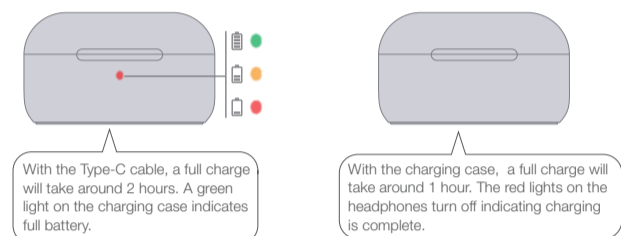


Bluetooth Pairing To The Device



* Above functions are available for either earbud in individual or Stereo mode.

Charging Methods

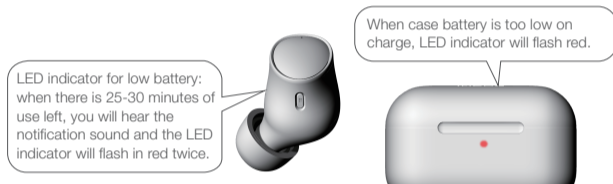


Battery Status Display in 1MORE MUSIC APP

Battery status of headphones and charging case will be displayed in 1MORE MUSIC APP.



Battery Notification



Touch Controls

Phone calls and music can be controlled by tapping on the Touch Control area of the headphone.



* To decline a call, please operate on paired mobile phone.
* To change a song or control volume, please set up on 1MORE MUSIC APP or operate on paired mobile phone or device.

Table with touch control gestures: Double tap (Phone Call, Playback), Single tap (Answer/End call, Play/Pause), Triple tap (Voice Assistant, Voice Assistant)

* Above functions are available for either headphone in individual or Stereo mode.
* Above functions may vary with different devices.

Auto Pause/Play:

Playback will auto pause when it detects the earbuds are removed from the ears, it will auto play when it detects they are on again



ANC-Strong, ANC-Mild, WNR and Pass-through Modes

- 1) ANC-Strong: suitable for aviation, highspeed train, metro etc.
2) ANC-Mild: suitable for noisy daily circumstances, such as malls, cafes, streets etc.
3) WNR Mode (Wind Noise Resistance): Helps attenuate audible wind noise while listening.
4) Pass-through Mode: Lets in environmental sounds so you don't need to take out the earbuds to hear what is going on around you.

The default setting of the headphones is: ANC-Strong/Pass-through (Touch and hold the Touch Control to switch on Left/Right headphone)



Set up personal listening mode in 1MORE MUSIC APP.



ANC-Mild and WNR are included in 1MORE MUSIC APP, with ANC-Strong together for personal setup.

Table showing ANC and WNR settings for Left and Right earbuds

Extra Functions

- 1. If headphones cannot pair normally when they power on. Open the case, and quickly click the pairing button in the case for 3 times to initiate searching for Left & Right pairing modes.
2. To update the callphone: Put both L & R into the case, and then press and hold the pairing button in the case for 8 seconds.
3. OTA Firmware Update: can be done synchronously with 1MORE Assistant APP when Left and Right headphones Bluetooth paired to each other.
4. Functions of 1MORE MUSIC APP may vary with different callphones or operating systems. For more details, please contact our customer service.

1MORE (1) Year Limited Warranty

1MORE warrants to the original retail purchaser of a period of one year from the date of purchase, if it is properly used and maintained. If this product proves defective in either material or workmanship, 1MORE, at its option, will (a) repair the product, or (b) replace the product, at no charge for parts or labor.

- Limitations:
- This limited warranty does not cover failure of the product resulting from improper installation, misuse, abuse, accident, neglect, mishandling, or wear from ordinary use or environmental deterioration.
- This limited warranty does not cover cosmetic damage, including paint damage, or consequential damage to other components or premises which may result for any reason from the failure of the product.
- This limited warranty is null and void for products not used in accordance with 1MORE's instructions.
- This limited warranty is null and void for products with altered or missing serial numbers and for products not purchased from an authorized dealer.
- This limited warranty terminates if you sell or otherwise transfer this product to another party.

We Appreciate Your Business

We know you will enjoy new 1MORE headphones as much as we do. At 1MORE, we value your satisfaction. If you would like more details on this product or any of our other products, please visit us online by scanning the QR code. Go to www.1more.com and sign up for VIP, and 1MORE will treat you like one.

Tips

- 1. Please read this instruction manual carefully and retain for future reference.
2. Please fully charge the battery before first use.
3. If the headphones have been unused for more than 3 months, we recommend that you charge them. This will improve battery capacity.
4. Only use charging cables and adapters that are FCC (Federal Communications Commission) approved.
5. In dry environments, static electricity may numb your ear. This is not related to the quality of the product.

Safety Information

- 1. Never disassemble the headphones. There are no user-serviceable parts inside.
2. Do not expose the headphones to temperatures below 32°F (0°C) or to temperatures above 113°F (45°C).
3. Do not use the headphones in a thunderstorm storm. This could prevent the headphones from working properly, and also increase your chance of being electrically shocked.
4. Do not use oil or any volatile liquid to clean this product.
5. Do not listen at high volumes for extended periods of time.
6. Do not use the headphones in traffic. Do not use the headphones any time it would be dangerous to be unaware of noises around you.
7. Adult supervision is required for children of age 6 and under.
8. If you don't feel comfortable after wearing the headphones, please refer to an aurist for advice on whether in-ear headphones are suitable for you.

FAQ

- 1. Why the headphones cannot be turned on?
2. Why the headphones cannot connect to my cellphone, or take a long time to connect?
3. Why the headphones cannot play music after successfully connecting to my Android device?
4. Why there is no sound from the headphones while making phone calls after successfully connecting to my Android device?
5. Why the Bluetooth connection is not stable and causes some interruptions?
6. Why some control functions do not match those in the manual while using third party music/video player Apps?
7. I turned the headphones up to the maximum volume, but why the actual volume still sounds low?

* For more detailed product FAQs, please visit the product support section under www.1more.com

WEEE

Electrical and electronic equipment, parts and batteries coming with this symbol must not be disposed of with normal household waste. It must be collected and disposed of separately to protect the environment.

Safety Caution

Do not expose batteries or battery packs to excessive heat such as sunshine, fire or the like.

CE

Declaration of Conformity: Hensley, Tianlab Acoustic Technology Limited declares that the radio equipment type 1MORE ComfoBuds Pro True Wireless In-Ear Headphones of EH902 is in compliance with Directive 2014/53/EU. The full text of the EU declaration of conformity is available at the following internet address: www.1more.com

RF exposure information: The device has been evaluated to meet general RF exposure requirement. The device can be used in portable exposure condition without restriction. Radiation Exposure Statement Power is so low that no RF exposure calculation is needed.

Declaration for EU Compliance
Operation Frequency/Max. EIRP: 2400-2483.5MHz, 9dBm.

Warning

Replacement of a battery with an incorrect type that can defeat a safeguard (such as catching fire, explosion, leakage of corrosive electrolyte etc).

Disposal of a battery into fire or a hot oven, or mechanically crushing or cutting of a battery, that can result in an explosion.

Leaving a battery in an extremely high temperature surrounding environment that can result in an explosion or the leakage of flammable liquid or gas, and a battery subjected to extremely low air pressure that may result in an explosion or the leakage of flammable liquid or gas.

== The symbol indicates DC voltage.



This product bears the selective sorting symbol for Waste electrical and electronic equipment (WEEE). This means that this product may not cause interference, and (2) this device must accept any interference, including interference that may cause undesired operation of the device.

CE: Cet appareil est conforme avec Industrie Canada RSS exemptes de licence (standards). Son fonctionnement est soumis aux deux conditions suivantes: (1) cet appareil ne peut pas provoquer d'interférences, et (2) cet appareil doit accepter toute interférence, y compris celles pouvant causer un mauvais fonctionnement de l'appareil.

To prevent possible hearing damage, do not listen at high volume levels for long periods.

FCC

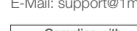
The SAR limit of USA (FCC) is 1.6 W/kg averaged over one gram of tissue. Device has also been tested against this SAR limit. This device was tested for typical body-worn operators with the back of the handset kept 0mm from the body. To maintain compliance with FCC RF exposure requirements, use accessories that maintain a 0mm separation distance between the user's body and the back of the handset.

This device complies with part 15 of the FCC rules. Operation is subject to the following two conditions: (1) this device may not cause harmful interference, and (2) this device must accept any interference received, including interference that may cause undesired operation.

NOTE: The manufacturer is not responsible for any radio or TV interference caused by unauthorized modifications or changes to this equipment. Such modifications or changes could void the user's authority to operate the equipment.

NOTE: This equipment has been tested and found to comply with the limits for a Class B digital device, pursuant to part 15 of the FCC Rules. These limits are designed to provide reasonable protection against harmful interference in a residential installation. This equipment generates uses and can radiate radio frequency energy and, if not installed and used in accordance with the instructions, may cause harmful interference to radio communications. However, there is no guarantee that interference will not occur in a particular installation. If this equipment does cause harmful interference to radio or television reception, which can be determined by turning the equipment off and on, the user is encouraged to try to correct the interference by one or more of the following measures: -Reorient or relocate the receiving antenna. -Increase the separation between the equipment and receiver. -Connect the equipment into an outlet on a circuit different from that to which the receiver is connected. -Consult the dealer or an experienced radio/TV technician for help.

Supplier's Declaration of Conformity
47 CFR § 2.1077 Compliance Information
Unique Identifier:
Trade Name: 1MORE
Model No.: EH902
Responsible Party - U.S. Contact Information
1MORE USA, Inc.
Address: 10225 Barnes Canyon Road, Suite A202, San Diego, California, 92121
Tel: 1-855-551-6673
E-Mail: support@1moreusa.com



IC Statement
This device complies with Industry Canada license-exempt RSS standards.

This device has been tested for compliance with IC SAR values at a typical operating near the body. To ensure that RF exposure levels below the levels tested, use accessories with the equipment to maintain a minimum separation distance of 0 cm between the body of the user and the device.

Name: Wireless Earphones
Model: EH902
Headphone Weight: 5.7 g
Case Weight: 45.2 g
Product Weight: 56.9 g
Headphone Size: 22.03 x 20.69 x 25.11 mm
Case Size: 66.60 x 28.61 x 38.65 mm
Headphone Battery Capacity: 48 mAh
Case Battery Capacity: 450 mAh
Headphone Charging Time: 1h
Case Charging Time: 2h
Playtime* (ANC Off):
Headphone Fully Charged: 8h
Headphones & Case Fully Charged: 28h
Input: 5V=1A
Working Temperature: 0°C - 45°C
Frequency Band: 2.400 GHz - 2.4835 GHz

* The playback time, tested under the laboratory condition of AAC format and 50% volume, may vary with different device setting, environments, usage and other factors.

Manufacturer: Tianlab Acoustic Technology Limited
Address: Tianlab Building 1403, Zone A Tianlab Industrial Park, Taoyuan Str., Nanshan Dist., Shenzhen, P.R. China

Made in China